



Mid-air engine

Start Stop

# ERE95 Hybrid | DESERT LOCOMOTIVE

## All Purpose Long Range Advanced Drones

Industrial Applications, Surveillance, Professional Aerial Photography

**30% PLUS** MORE  
& TIME, RANGE & PAYLOAD

**5 kg**



ERE 95 Hybrid PRO



Max takeoff  
**22 KG**



Max payload  
**5 KG**



Up to  
**5.5 Hours**

**8 kg**



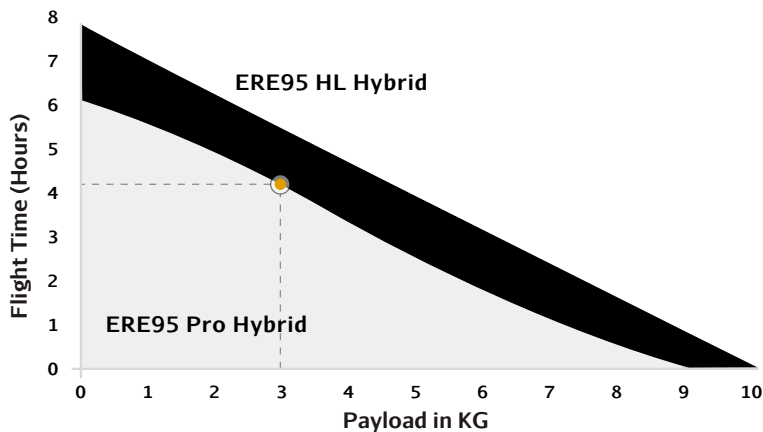
ERE 95 Hybrid TS

Max takeoff  
**25 KG**

Max payload  
**8 KG**

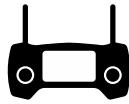
Up to  
**7.5 Hours**

Hybrid kit quick deployment



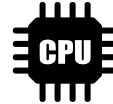
# Peripherals CPX SDK for easy 3<sup>rd</sup> party integration

- Navigation with no GPS
- Anti-GPS jamming
- Dead Reckoning (DR) - Return home with no GPS
- RTK GPS
- Precise landing
- Ultrasonic landing sensors
- Advanced AI capabilities
- Obstacle Avoidance
- Lidar flow control
- Ultrasonic sensors
- Image processing



## Ground Control Unit

- Unified control system
- Control, Video, Data
- Ardupilot, PX4



## Air Unit (Linux)

- Precision Landing
- Image Processing - AI
- Object detection & tracking
- Data Encryption (AES 256)
- ROS & SLAM



## Communication & Datalink

- SDR / P2P 2.4GHz / P2P 5.8 GHz
- 5KM-10KM - 25KM-50KM Video
- Up to 50KM Control & Telemetry
- Optional LTE



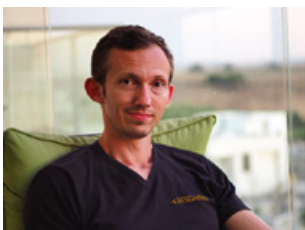
AIRCRAFT	ERE 95 PRO Hybrid	ERE 95 HL Hybrid
Dimensions	1690 mm Folded 580 mm x 800 mm x 790 mm	1690 mm Folded 580 mm x 800 mm x 790 mm
Case Dimensions	700 mm x 900 mm x 900 mm	700 mm x 900 mm x 900 mm
Flight Battery Quantity	2 Backup Battery	2 Backup Battery
Weight (Standard)	13.2 kg	15.2 kg

PERFORMANCE	ERE 95 PRO Hybrid	ERE 95 HL Hybrid
Max Takeoff Weight	22 kg	25 kg
Max Payload Weight	5 kg	8 kg
Max Speed of Ascent	2.5 m/s	2.5 m/s
Max Speed of Descent	2 m/s	2 m/s
Max Wind Resistance	10 m/s	9 m/s
Max Flight Altitude above Sea Level	1500 m	1500 m
Max Speed	16 m/s (no wind)	15 m/s (no wind)
Operating Temperature	14° to 104° F (-10° to 40° C)	14° to 104° F (-10° to 40° C)

GENERATOR- ERE 95 PRO Hybrid	GENERATOR- ERE 95 HL Hybrid
Nova 2400 Watt Backup Battery 2X6s1p5amp	CPX 3200 Watt Backup Battery 2X6s1p5amp

PAYLOAD, MISCELLANEOUS	
Retractable Landing Gear	Standard
Flight Control System	Pixhawk cube
CPX-Air Unit	Yes

POWER SYSTEM FULL REDUNDANCY HEXA TYPE (6 ROTORS)		
PRO	28"	30"



## TS Hybrid

Taras Shapirko

We named our hybrid drone after our most talented and promising robotics engineer who died in an unfortunate accident at the young age of 29. We cherish his huge contribution and will miss him as both a friend and a professional.

Powered by CopterPIX's **CPX open framework** (hardware and software)

