

TM



Since 1962

**MIFRAM  
SECURITY**

BUILT TO PROTECT



# WHY MIFRAM SECURITY

**The world's  
most effective  
vehicle barriers**

# MVB-3X



**International Deployment - Since 2002 | All Terrain**



**Deployed By One individual | Fast Deployment**



**RAMMING VEHICLES  
WE STOP THEM ALL!**

# STOPS UP TO 7.5 TON @30 mph



**All Weather | Excellence Engineering & Material | Robust Design**



**Easy Mobilization | Versatile | Light & Compact**



## TESTED & CERTIFIED:



# MOBILE BARRIERS COLLECTION

## MVB 3X Modular Vehicle Barrier



**TESTED & CERTIFIED**     L. ~118 cm ~3.87 ft.  
W. ~53 cm ~1.74 ft.  
H. ~82 cm ~2.7 ft.  
W. ~24 kg ~52.9 lbs.

**CAN STOP**    

## SAMSON



**TESTED & CERTIFIED**     L. ~150 cm ~4.92 ft.  
W. ~85 cm ~2.13 ft.  
H. ~108 cm ~3.54 ft.  
W. ~55 kg ~121.3 lbs.

**CAN STOP**    

## HERCULES



**TESTED & CERTIFIED**    L. ~180 cm ~5.9 ft.  
W. ~110 cm ~3.61 ft.  
H. ~125 cm ~4.1 ft.  
W. ~175 kg ~385.88 lbs.

**CAN STOP**     

## MVB-II Modular Vehicle Barrier




**TESTED & CERTIFIED**    L. ~110 cm ~3.61 ft.  
W. ~84 cm ~2.1 ft.  
H. ~88.5 cm ~2.94 ft.  
W. ~27 kg ~59.5 lbs.

**CAN STOP**   

# The world's most effective vehicle barriers

## PYRAMID



DESIGNATED SAFETY ACT


**STOPS UP TO 6.8 TON**

TESTED & CERTIFIED

ASTM INTERNATIONAL 9001:2015

L. ~255 cm ~8.4 ft.  
 W. ~100 cm ~3.3 ft.  
 H. ~100 cm ~3.3 ft.  
 W. ~350 kg ~771.8 lbs.

CAN STOP



At slow speed

## RMB Robust Mobile Barrier



**STOPS UP TO 40 TON**

TESTED & CERTIFIED



ISO 9001:2015

L. ~300 cm ~9.85 ft.  
 W. ~100 cm ~3.3 ft.  
 H. ~200 cm ~6.6 ft.  
 W. ~1000 kg ~2205 lbs.

CAN STOP



## MVB Modular Vehicle Barrier

**STOPS UP TO 2.5 TON**

TESTED & CERTIFIED


COMBAT PROVEN SINCE 2002

ISO 9001:2015


**THE ORIGINAL MVB Since 2002**

L. ~100 cm ~3.3 ft.  
 W. ~60 cm ~1.97 ft.  
 H. ~70 cm ~2.3 ft.  
 W. ~21 kg ~46 lbs.

CAN STOP



## ARChie Surface Mounted Vehicle Barrier

**STOPS UP TO 7.5 TON @80 km/hr [50 Mph]**

TESTED & CERTIFIED

IWA 14


PAS 68 2017

ASTM INTERNATIONAL

MSO CERTIFIED

L. ~221 cm ~7.2 ft.  
 W. ~290 cm ~9.5 ft.  
 H. ~260 cm ~8.5 ft.  
 W. ~2900 kg ~6400 lbs.

CAN STOP





US ARMY IN WAR ZONE

## About MIFRAM

Mifram is a multidisciplinary company.

Since its founding in 1962, Mifram is working effectively with many governments and international companies.

These include the U.S. State Department, U.S. Army, Navy, Air Force, and Marines, FBI, KBR, Elbit Systems, RTA, UN, Japanese Army, French Customs and Blinds, I.D.F. and many national security agencies.

The company has gained vast experience of 50 years as part of international production and maintenance.

The company staff consists of professional engineers and skilled craftsmen, crane fleet, forklift lifts, trucks and inventory of all the equipment needed to overcome any challenge and complete any type of project.

## About the barrier division

Mifram's Barrier Manufacturing Division produces and provides a variety of ramming vehicle barriers that are lightweight, easy to deploy, portable, and doesn't need any maintenance.

These barriers designed using the Jiu-Jitsu approach where the momentum of ramming vehicles used against them and transferred to the ground.

All of the barriers developed and manufactured using patent-pending technology.

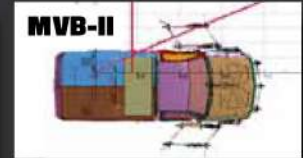
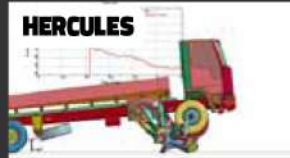
You can quickly join individual smaller units of the barrier to form a required sized barrier, and it is available for varying vehicle and road sizes.

## Experience

Established in 1962, Mifram Security is the world's leading provider in the design, manufacture, and installation of physical perimeter security solutions. Mifram offers an accumulated wealth of experience in its decades of dedicated service to its clients.

Mifram is a pioneering company, developing modular vehicle barrier systems since 2002. Over the last two decades, tens of thousands of barriers were provided to customers all around the world.

Among our respected, satisfied customers are the U.S. Armed Forces, Japanese Army, various police and special forces, port authorities, private security firms, stadiums, resorts, power plants, municipalities, road construction companies and more.



## R&D Team

Perfect recipe: The right ingredients that make a great product Concept definition by a team of experts. Mifram R&D team has many years of experience in the development of anti ramming barriers systems. The same team developed the first Mobile vehicle barrier in the world in 2002.

## Testing and certifications

During the final stage, we test the barriers at a recognized Barriers Certification Testing facility. Our barriers certified by all the international standards:



## Simulations

All our barriers get simulated at advanced Research laboratories with Senior Researchers using High-end computers.

The computer simulations allow to our R&D team to find the best formula for a perfect product and providing to the client maximum protection needed with minimum estimations and assumptions.

Due to our continuous R&D simulations, Mifram Security can also show our customers premade simulations to help determine if they require a custom solution or can use one of the existing models.

These simulations reflect a considerable amount of experience and knowledge.

## ENDORSED BY



US ARMY



FBI



USMC



UN



US NAVY



POLICE FORCES



US AIR FORCE



IDF & More...

- Critical Infrastructure
- Ports & Airports
- First Responders
- Sports Events
- Construction Works
- Crowd & Vehicle Control



Deployed by one worker

## Comfortable deployment

Typically, deployments are not known for being comfortable and fun. However, with Mifram barriers you can make the deployment quicker and easier by using our advanced barrier solutions:

The lightweight barriers deployment benefits are:

- Assembly by one person
- Disassembly by one person at the end of the job
- Quick installation takes only a few minutes
- No required tools
- Easy transportation
- Easy to store
- Modular system - Systems can be as short or as long as required
- Miframs lightweight barriers save time, labor and logistics costs and make the workers happier.

**Mifram's semi-permanent vehicle barriers save time, labor, and infrastructure costs and make the workers happier**

**Watch how easy the deployment.**



## The semi-permanent vehicle barriers benefits

- Does not require any special infrastructure
- Manual or Secure RF remote control operated
- Quick and easy to assemble by forklift and crane truck







## Work smarter not harder

Jersey barriers and concrete blocks required complex logistics and can not stop anything larger than a small car. Using SUVs for blocking the road is not a good solution either because SUVs can not stop a truck. None of the above works.

What about Bollards? Bollards are the common solution, even though bollards are expensive, complicated to assemble, require infrastructure coordination and civil works maintenance and infrastructures.

For those reasons, we developed the MVB barriers; the MVB barriers are portable, lightweight, easy to deploy and save lives.





## Peace of mind

In today's world of growing terror threats, protecting the streets and assets has never been more challenging. It's always better to be prepared than surprised.

Be sure that you made the perfect choice for protecting your neighborhood, community, and assets with the world's most effective vehicle barriers.



## Benefits

- Deployed By One individual
- All Terrain
- All Weather
- Excellence Engineering & Material
- Robust Design
- Fast Deployment
- Easy Mobilization
- Versatile
- Light & Compact
- International Deployment Since 2002





30 holes storage box



Transportation & deployment in a towed trailer

## Dedicated storage solutions

These storage products are available in different sizes, adapted for easy loading and unloading from and into common service and security vehicles for fast transportation and efficient deployment using a fork lift or a small group of technicians.

- 12 slots storage box
- 16 slots storage box
- 30 slots storage box
- Easily transportable
- Forklift loading & unloading
- Designed and created specifically for our barriers.



12 holes storage box



loading the storage box onto a pickup truck



16 holes storage box on a pickup truck



Since 1962

**MIFRAM  
SECURITY**

BUILT TO PROTECT  
**Our Solutions  
Your Peace of Mind**

**+972-72-3340719**  
**sales@mifram.com**  
**www.MiframSecurity.com**  
**WATCH US ON You **

PATENT PENDING All rights reserved to MIFRAM Ltd. 2022 ©