



Digital Intelligence Solutions Catalog

Equip your Agency for the Age
of Digital Investigations

CONTENTS

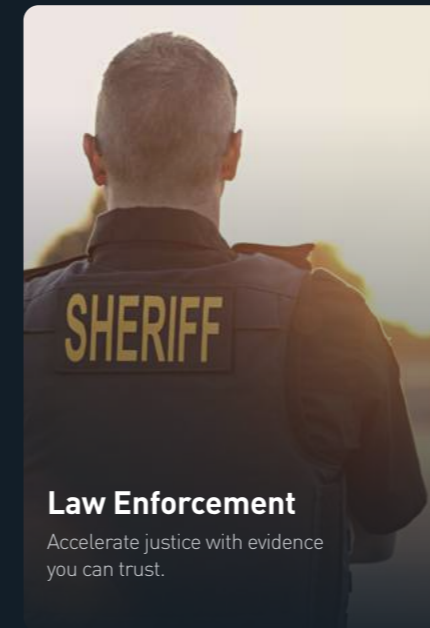
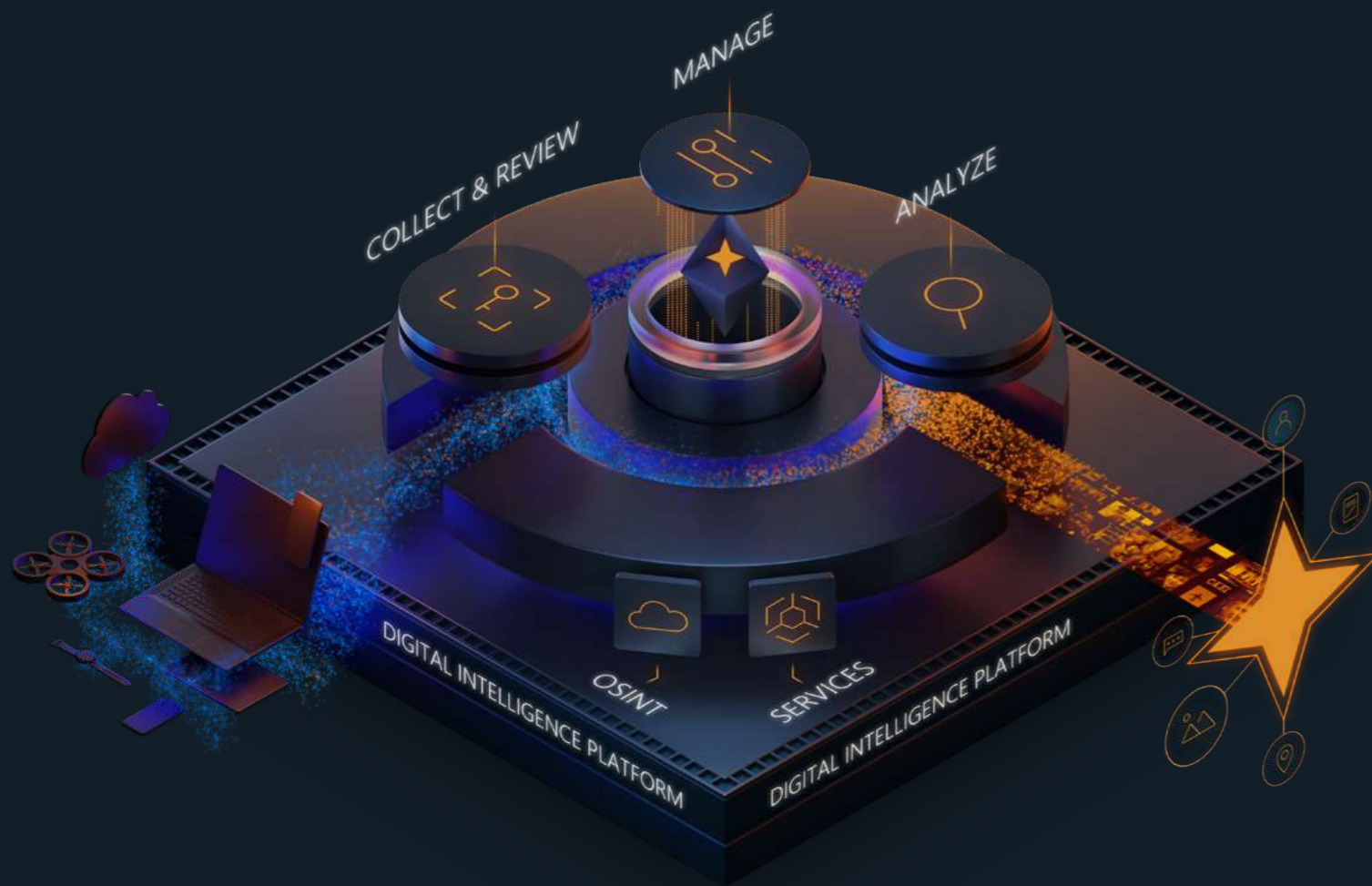
The Digital Intelligence Platform	4	Investigative Management	20
Cellebrite & Chainalysis Partnership	6	Cellebrite Guardian	20
Collect & Review	7	Cellebrite Commander	21
Cellebrite OSINT Solutions	7	Investigative Analytics	22
Cellebrite UFED	8	Cellebrite Pathfinder	22
Cellebrite Physical Analyzer	9	Cellebrite Inspector	23
Cellebrite Physical Analyzer Ultra Series	10	Cellebrite powered by CipherTrace	24
Cellebrite Premium as a Service	11	Cellebrite Endpoint Inspector	25
Cellebrite Premium	12	Cellebrite Services	26
Cellebrite Premium ES	13	Cellebrite Training & Advisory	28
Cellebrite Responder	14	Cellebrite Advanced Services (CAS)	29
Cellebrite Frontliner	15	Cellebrite Value Realization Services	30
Cellebrite UFED Cloud	16	Cellebrite Technical Customer Support	31
Cellebrite Digital Collector	17	Add-ons & Accessories	32
Cellebrite Seeker	18		
Cellebrite Reader	19		

THE DIGITAL INTELLIGENCE PLATFORM

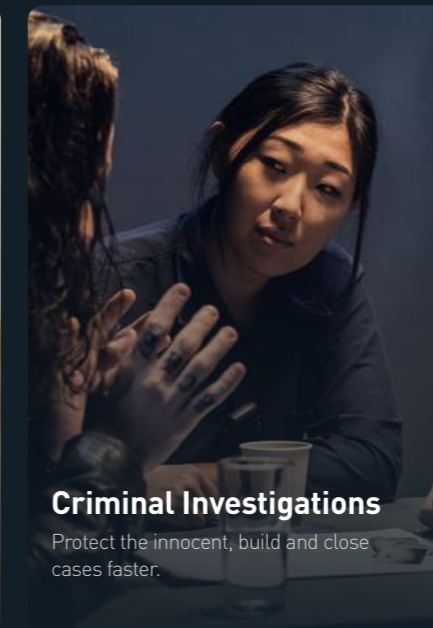
Equip your Agency for the Age of Digital Investigations

Today, investigators must do the impossible. Each new case brings overwhelming amounts of data, scattered across multiple devices and sources which can take months to review one by one. And with no way for teams to seamlessly share evidence and collaborate, dots go unconnected, and crimes go unsolved, keeping criminals at large, and your community at risk. To protect a world gone digital, it's time for agencies to digitally transform.

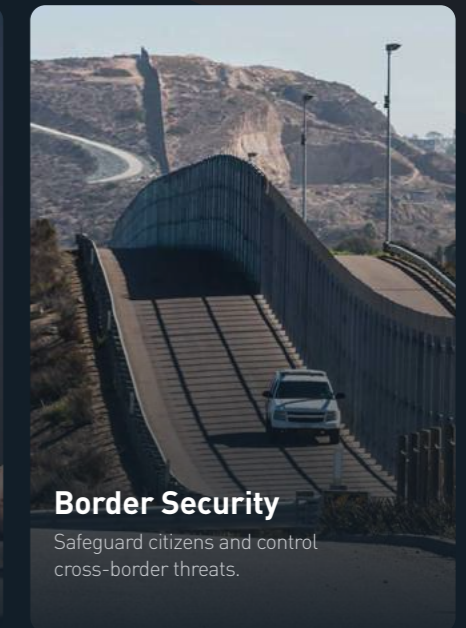
Cellebrite, the leader in Investigative Digital Intelligence, helps agencies step boldly into the age of digital investigations, equipping them with everything they need to gather intelligence, tackle investigations, and resolve cases faster and more efficiently than ever before.



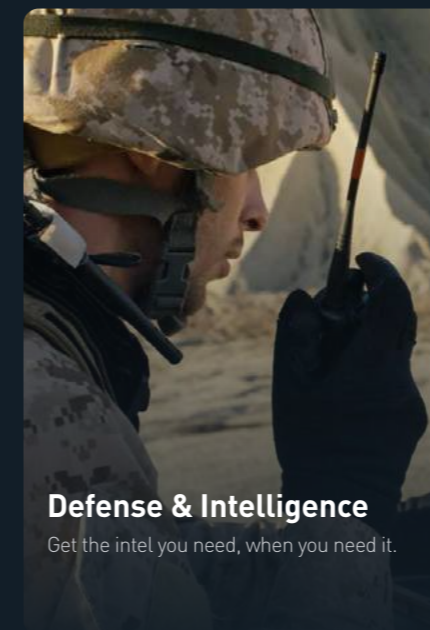
Law Enforcement
Accelerate justice with evidence you can trust.



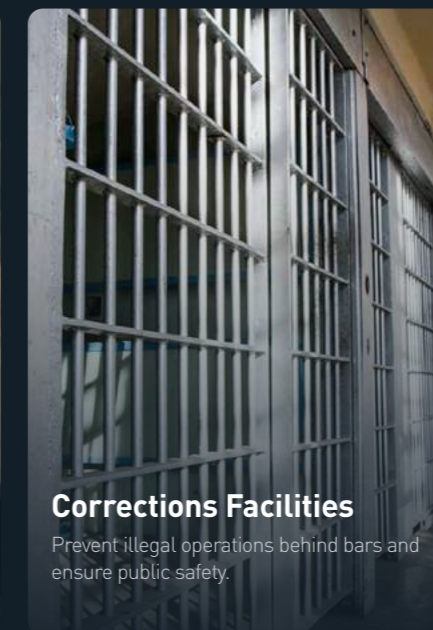
Criminal Investigations
Protect the innocent, build and close cases faster.



Border Security
Safeguard citizens and control cross-border threats.



Defense & Intelligence
Get the intel you need, when you need it.



Corrections Facilities
Prevent illegal operations behind bars and ensure public safety.



Environmental Crimes
Protect our world from illicit and inhumane crimes.



Cellebrite & Chainalysis Partnership

Modernizing Digital Investigations with Cryptocurrency Insights and Capabilities.

Advanced investigation solutions powered by market leaders in Digital Intelligence and Blockchain Analysis.

Cellebrite has partnered with Chainalysis, the blockchain data platform, to enhance and enrich our digital investigation suite of solutions with cryptocurrency knowledge and solutions. This collaboration enables automated, real-time cryptocurrency artifacts' analysis within your familiar digital investigations workflows to solve more cases faster.

The collaborative offerings:

- **Integrated Solution:** Cellebrite's Digital Intelligence suite of solutions is enriched with key Chainalysis blockchain data, including Asset Type, Risk Score, and Threat Category, to help customers identify, assess and accelerate investigations involving cryptocurrencies.
- **Chainalysis Reactor:** For customers requiring more in-depth investigations, Cellebrite will offer the Reactor, the investigation software that connects cryptocurrency transactions to real-world entities, examines criminal activity, and allows for the separation of illicit activity from legitimate user cases, like loans and NFT transfers.
- **Training & Certifications:** Cellebrite's holistic crypto offering includes training of Chainalysis Cryptocurrency Fundamentals and Reactor essentials courses and certifications, which have equipped thousands of investigators worldwide to become experts in crypto forensics.
- **Advanced cryptocurrency investigation services:** Cellebrite's expert forensic investigation team will expand its services to support customers with investigations that involve cryptocurrencies by using Chainalysis solutions.



Modernize your investigations and stay one step ahead with Cellebrite OSINT solutions

Crime today is becoming more sophisticated as criminals leverage advanced technologies and online solutions for illicit activities. As a result, investigations are becoming much more challenging to solve than ever.

Cellebrite's OSINT solutions help investigations stay one step ahead with capabilities to collect and analyze publicly available information.

Key Benefits:

- Automated, fast and dynamic collection of online data
- Draw insights from multiple sources simultaneously
- Up-to-date information in one clear view
- Simple navigation with an intuitive workflow
- Fits seamlessly into any investigative process
- Part of Cellebrite's end-to-end suite of solutions



Empowers investigators to perform an automated and quick open-source search on a desired identifier. Based on a single identifier, publicly available data is automatically collected, generating a detailed view that includes information from all layers of the web: dark, deep and the surface web.



Enables flexible, comprehensive, and effective OSINT collection and analysis to enhance digital investigations. OSINT for Analysts collects huge amounts of unstructured data from all layers of the web, and leverages AI and analytics to generate meaningful insights.





The Industry Standard for Lawfully Accessing and Collecting Digital Evidence

Whether in the field or in the lab, Cellebrite UFED is the industry-leading solution for accessing and collecting critical digital evidence from the broadest range of digital devices.

Key Benefits:

- **Broadest Range of Digital Devices:** Lawfully access and collect critical digital evidence from mobile phones, drones, SIM cards, SD cards, GPS devices, and more.
- **Forensically Sound Collection :** Lawfully collect digital evidence while maintaining the integrity of the data.
- **Comprehensive Collection Methods:** Get the most data out of the digital devices with multiple data collection methods, including full file system (FFS).

Available Platforms :

UFED 4PC
This cost-effective, flexible, and convenient software format is for any user requiring access and collection capabilities on their existing PC or laptop.

UFED Touch2
This solution enables comprehensive data collection capabilities anywhere, whether you're in the lab, at a remote location, or in the field.

UFED Ruggedized Laptop
This laptop is loaded with UFED software and comes in a purpose-built ruggedized case that can withstand drops, shocks, and extreme temperatures to ensure a seamless workflow wherever the investigation takes you.



The Industry Standard for Digital Data Examination

Cellebrite Physical Analyzer is the market-leading solution for ingesting, decoding, and reviewing digital evidence from the broadest range of devices, applications, warrant returns, and the Cloud. Cellebrite Physical Analyzer is the go-to solution for examiners, enabling them to surface critical digital evidence efficiently and effectively for each unique case.

Key Benefits:

- Access the widest range of applications, devices and file formats.
- **Uncover Actionable Intelligence:** Highlight key insights to make quick and insightful decisions on where to focus examinations using application insights and customizable dashboard widgets.
- **Visual Events Timeline:** Build a storyline of events and zoom-in on a timeframe of interest with this advanced graphical timeline.
- **Advanced Decoding:** Reassemble device and application data into readable formats with SQLite Wizard, Python scripting, App Genie and Hex highlighting.
- **Ingest Multiple Formats:** Ingest data extractions from Cellebrite UFED, Cellebrite Premium, Cloud warrant returns and other extraction tools.
- **Customized Reports:** Tag key findings and generate easy-to-read reports to share with stakeholders.



Today's Technology For Solving Tomorrow's Crimes



Cellebrite's Physical Analyzer Ultra provides a more advanced software infrastructure for a leading digital intelligence collection and review solution. Investigative teams will experience more resilient, efficient, and practical investigations directly from the solution they already know.

Cellebrite's PA Ultra is a supercharged version of the Physical Analyzer solution. This digital data examination solution provides even more value in uncovering evidence and examining digital data. Productivity and time-to-evidence is improved with enhanced capabilities to efficiently process critical digital evidence during investigations.

Key Benefits:

- **Increased Scale:** More evidence means better outcomes. Ingest, decode and surface much larger volumes of data from multiple sources.
- **Powerful Database:** Never lose data from previous sessions again. The new database structure provides quick access to all your case work data right where you left off.
- **New Dashboard:** Automatically highlights key insights with the power to drill down into data sets for quick examinations.
- **Enriches Cryptocurrency Artifacts:** Attributes such as currency type, risk severity and threat category, enable examiners to easily identify and assess criminal activity that is leveraging cryptocurrency.
- **Decodes both computer and mobile data:** Allowing lab technicians to leverage a single technology solution for multisource examinations.



Access More Evidence and Expedite Time to Justice with Premium as a Service



Cellebrite's new Premium as a Service gives lab technicians and examiners the advantages of a cloud-based service with more ways to deploy, greater accessibility and a bigger return on investment.

Examinations that demand advanced mobile device access can now enjoy Cellebrite's Premium as a Service available in a number of pricing models and configurations and adaptable to a range of agency use cases and needs.

Key Benefits:

- Access to the widest range of iOS and Android devices with the benefit of the Supersonic unlock speeds that increase your agency's efficiency and time to justice.
- Full file system extractions, and access to highly protected areas, deleted data and application artifacts.
- Cloud architecture that saves agency personnel time-consuming hardware maintenance, security management and software updates.
- Seamless connection and management of installed UFEDs and addition of new endpoints to create a force multiplier network effect.
- Flexible pricing from a range of packages to best suit agency budgets.



Unprecedented Lawful Access to iOS and Android Devices

Cellebrite Premium expands lawful device access and data collection to a wide range of advanced iOS and Android devices, increasing the capacity of the lab to assist investigations with more digital intelligence.

Key Benefits:

- **Advanced Technology:** Overcome locked and encrypted Android and iOS devices using various lawful methods such as passcode brute-force, After-First-Unlock (AFU), and passcode bypass.
- **High-End Mobile Device Support:** Supports the widest range of Android devices including all leading vendors such as Samsung, LG, Motorola, Google, Huawei, Xiaomi, Alcatel, Sony, and more.
- **Widest Data Collection:** Benefit from the best collection in iOS and Android devices that provide data from third-party encrypted applications such as WhatsApp, Facebook, and others. Additionally, Cellebrite Premium retrieves chat conversations, deleted content, emails, and other information that is not available in logic-based methods.
- **Additional Lawful Collection Capabilities:** The only tool that provides extraction of Android-secured containers such as Samsung Secure, Huawei PrivateSpace, and Xiaomi Second Space.

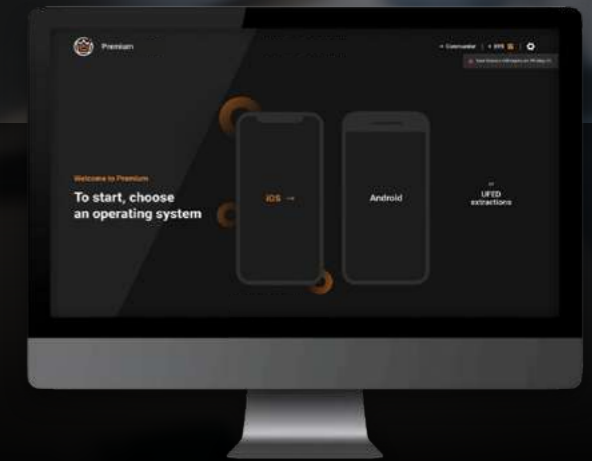


The Power of Advanced Device Access at Scale

Cellebrite Premium ES is an industry-leading, server-based solution that increases the capacity of agency labs to lawfully access a wide range of iOS and Android mobile devices from multiple Cellebrite UFED end points. With Premium ES, agencies can increase the efficiency and effectiveness of digital investigations by equipping Cellebrite UFED users with advanced access capabilities.

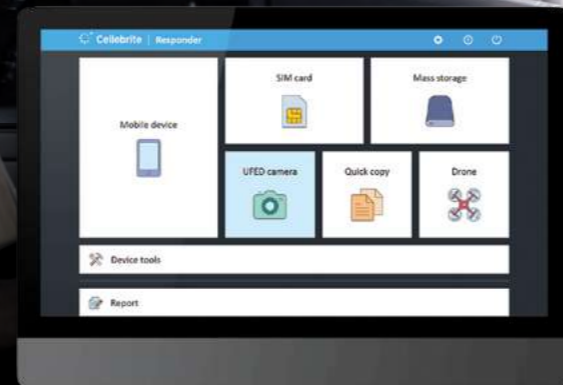
Key Benefits:

- **Scale-Up Advanced Access with an Agency-Wide, Enterprise-Grade Solution:** Flexible packages to meet various agency needs.
- **Accelerate Time-To-Evidence, Boosting Your Productivity:** Tackle lab backlog by empowering every Cellebrite UFED endpoint with Cellebrite Premium capabilities, whenever and wherever needed.
- **Improve Operational Efficiency, Maintaining Chain of Custody:** Eliminate the need to transfer locked or encrypted devices to a central lab, by securely connecting to a central Cellebrite Premium unit.
- **Get Closer to Digital Policing with Centralized User and Fleet Management:** Combined with Cellebrite Commander, you can better manage your Cellebrite UFED fleet and gain transparency in one simple dashboard.





Get Real-Time Data for Faster Response in the Field



Cellebrite Responder empowers investigative teams to securely extract data from the widest range of devices at specific locations or on the go.

Whether deployed in-car on a ruggedized device, in a police station, at a border control checkpoint, or inside a correction facility via a Kiosk, this intuitive solution requires minimal training and captures only the most relevant information while maintaining data integrity.

Cellebrite Responder is a key component in Cellebrite's range of Field Solutions that empowers users to perform from selective to full physical data extraction when minutes matter.

Key Benefits:

- Generate leads and uncover actionable insights in real-time.
- Select and extract only the relevant data needed based on time range or information on a specific subject (person, email, phone).
- Only copy specific evidence from witnesses' and/or victims' phones.
- Easily generate reports and share findings.

Cellebrite Responder is available on a Kiosk platform, laptop, or as a software-only solution to be installed on a hardware of your choice.



Collecting with Confidence on the Frontline



Cellebrite Frontliner provides field officers with a consent-based data collection solution that is simple to use and maintains data integrity.

In a simple-to-operate mobile application format, Cellebrite Frontliner empowers field officers to capture digital data and begin the reporting process while at the scene.

As part of Cellebrite's Field solutions, Cellebrite Frontliner enables users to quickly collect and review digital evidence in a forensically sound manner to accelerate the flow of information to the investigative team.

Key Benefits:

- Witnesses and victims can share key evidence from their devices using a wireless, non-intrusive format.
- Record audio of witness testimony, take pictures or videos, and automatically tag them with metadata that includes location details, timestamps and hash values – all admissible in court.
- Gather all information into a single case.
- Password protect captured data.
- Share HTML or UFDR forensic reports with the wider team in real-time from the scene.



Lawfully Access Cloud-Based Evidence to Accelerate Investigations

Cellebrite UFED Cloud provides a forensically-sound, automated process to access the cloud-based details you need to discover relevant evidence and find new investigative paths within pre-approved legal boundaries. This solution allows you to extract, preserve, and analyze public domain and private social media data, instant messaging, file storage, web pages, and other cloud-based content. Easily search, filter, and sort data to quickly identify suspects, victims, locations, and more.

Key Benefits:

- **40+ Cloud Data Sources:** Gather legally pre-approved private user data from the most popular social media and cloud-based sources.
- **Capture and Review Public Domain Data:** Capture forensically sound data using a quick and automated process.
- **Get More Data with the Web-Crawler:** Collect and hash digital evidence from HTML-based web pages in minutes using the web-crawler feature.
- **Track Online Behavior:** Review a suspect's search history, gather geo-location data, Google activities, digital profiles, and more.
- **Consolidate Multiple File Formats:** Normalize and sort data from a variety of sources and formats for easier review within the timeline.
- **Generate Reports:** Generate easy-to-read PDFs for entire data sets or filtered information.

Cellebrite UFED Cloud is available as a software-only, or as an add-on license to Cellebrite Physical Analyzer.



Access Computer Data to Accelerate Investigations

Cellebrite Digital Collector is the first and only solution with a single SSD that can create physical and logical collections from both Mac and Windows 10 computers. With Digital Collector, examiners are empowered to triage live or booted computers by browsing and searching, filtering for file metadata and keywords, and previewing file contents before collecting data or creating an image. Examiners can also collect complete forensic images of computers, including deleted and unallocated areas of drives, saved into industry-standard formats.

Key Benefits:

- Forensically boot Intel Mac computers from 2020 and earlier.
- Collect data from live Mac computers running macOS Big Sur 11 and earlier, as well as systems with the T2 chip and M1 systems.
- Digital Collector will run on live Windows computers with 64-bit hardware running Windows 10, version 1909 and newer.
- Forensically boot Windows computers running Windows 10 and possibly older Windows operating systems.



Capture, Analyze, and Report on All Video Evidence



Evidence gleaned from videos is now being used to help solve 80% of crimes being investigated.

Keeping up with the thousands of DVR systems and reviewing evidence from DVR proprietary formats can be a time-consuming and often frustrating challenge for investigators.

Cellebrite has teamed with a market-leading partner, INPUT_ACE, to help you effectively manage your video evidence needs.

Cellebrite Seeker is a secure and integrated solution that assists investigators looking to analyze video footage and overlay videos with mobile device data. Users can capture, analyze, and report all video evidence while incorporating the findings into a case timeline that can be easily viewed and digested.

Video Access

- Bypass DVR passwords and locked systems
- Recover stored and deleted video files
- Access video from non-working DVRs
- Eliminate the need for proprietary, unnamed video players

Video Analysis

- Correlate images from different angles and video reconstructed scenes
- Review and annotate footage sections
- Enhance and tag video images
- Overlay with case data set
- Determine incident timeline



Amplify Findings and Share Information Across Departments

Cellebrite Reader is a free, executable application, which allows examiners or investigators to easily create and share dynamic reports. It provides a simple, intuitive way to collaborate with teams outside of the lab that may not have access to Cellebrite's solutions.

Cellebrite Reader enables users to easily filter and sort data quickly to identify suspects, victims, locations, and more.

Key Benefits:

- Conduct a basic analysis of the report's results without purchasing additional software.
- Dig deep into the data using advanced analysis functionalities, such as advanced search, filtering, timeline, and tags.
- Customize and generate reports in multiple formats.



Simplify Your Investigation & Evidence Management



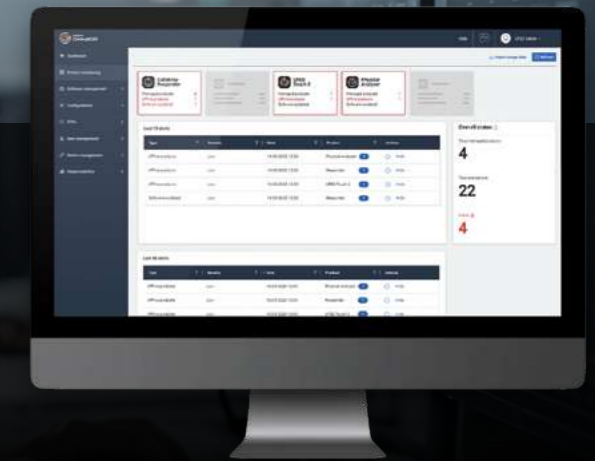
Cellebrite Guardian is a secure, and scalable cloud-based solution for evidence management, sharing and review that simplifies and streamlines your investigations – wherever you are.

Designed by and for our users, Cellebrite Guardian offers a highly secure and compliant solution to help manage, store, share and review evidence, from intake to review and final report:

- **Manage:** All-encompassing customizable evidence management—both physical and digital—in one holistic solution.
- **Store:** Highly secure, centralized data and procedure management, enabling you to replace the silos in your investigative processes with a solution scaled to fit your agency’s needs.
- **Share:** Advanced roles and permissions management for all stakeholders, giving you the ability to share evidence instantly while maintaining full auditing and monitoring for chain of custody.
- **Review:** Immediate and unmatched review of UFDR reports directly in your browser, providing you with expedited time-to-evidence and enhanced collaboration while ensuring you get to key insights sooner.



Commanding the Authority of Tools and Processes



Cellebrite Commander enables you to centrally manage and maintain your agency’s digital intelligence solutions - all from one command center.

Key Benefits:

- **Manage Your Fleet Centrally:** Simplify device and system management and reduce administration costs by remotely distributing and installing software updates and configuration modifications.
- **Keep Current with Policies and Permissions:** Centrally manage system usage, both at the user and device level, to ensure that agency policies and user permissions are in sync, enforced and up to date.
- **Optimize Device Usage:** Easily gather important utilization insights with robust auditing and reporting capabilities to identify operational efficiencies and improve usage of your devices and systems – whether in the lab or deployed remotely in the field.
- **Ensure Evidentiary Integrity:** Automatically back up the metadata of every extraction and have a transparent, auditable, and defensible chain of custody. Maintain the latest versions and configurations to ensure forensic integrity of the data collected.
- **Create End-To-End Visibility:** Generate dashboards and statistical crime type reports to share with your team and agency management to optimize the value of your digital technology investments.



Find the Path to Insight Through the Mountains of Data

Cellebrite Pathfinder is the industry-leading solution for helping law enforcement expedite investigations. Cellebrite Pathfinder uses AI to swiftly sift through all types of digital data and automatically surface critical evidence and actionable insights from digital devices so that your team can focus on solving the case.

Simplify:

- Organize complex data to give an intuitive overview across texts, images, emails, videos, documents and apps.
- Unify digital fingerprints to identify persons of interest by correlating identifiers across apps and data sources.
- Enrich technical information into digestible insights, including from browsers, apps, cell towers and wifi hotspots.
- Better understand conversations prior to and during the event with a holistic overview of communication across all apps.

Analyze:

- Easily review relevant data with automatic grouping of media into built-in and tailorable categories.
- Reveal important insights automatically surfaced from text analysis including names, places, websites, currencies and languages.
- Uncover patterns in location data through maps of visited places, shared intersections and irregular points of interest.

Collaborate:

- Streamline processes to allow smoother collaboration with internal teams and external stakeholders.
- Create comprehensive reports to present to teams, chain of command and partner agencies.



The Premier Computer Data Analysis Solution for Windows and Mac

Cellebrite Inspector has all the functionality you need to conduct in-depth analysis and generate customized reports to reveal the truth. With advanced searching and filtering capabilities and built-in AI media categorization, investigators easily find Internet History, Downloads, Locations, Recent Searches and more.

Key Benefits:

- **Built-In Windows Support:** Obtain user activity from Windows memory and get registry artifacts including jump list, Windows 10 timeline activity, shellbags, SRUM, and more. Review device history from Windows Volume Shadow Copies (EXCLUSIVE TO CELLEBRITE).
- **Built-In Mac Support:** Full support for the latest drives, file systems, and encryption including M1 systems, the T2 chip, FileVault 2, and Fusion Drives. Review history in APFS Snapshots and Time Machine backups, display and search Spotlight metadata and KnowledgeC data, review network connections, recent documents, user activity, and more.
- **Portable Case Review:** Share your case findings with other stakeholders using customized reporting capabilities.



Follow the Digital Money Trail

Every modern investigation must be armed with the latest tools and techniques for comprehensive cryptocurrency investigations. Cellebrite powered by CipherTrace empowers teams to reveal solid evidence on individuals who use Bitcoin and other cryptocurrencies for money laundering, terrorism, drug and human trafficking, weapon sales, and other crimes.

Fight Crimes That Use Bitcoin & Cryptocurrencies:

- **Risk Scoring:** Profile hundreds of global exchanges, ATMs, mixers, money laundering systems, gambling services, and known criminal addresses and assign risk levels to transactions.
- **Blockchain Search Engine:** Simply enter a cryptocurrency address or transaction ID into an intuitive search bar that will auto-complete long addresses.
- **Deep Analysis on Potential Risks:** Non-technical users can visualize transaction flows to follow virtual money trails without becoming a cryptocurrency or blockchain expert.
- **High-Quality Advanced Attribution:** Advanced analytics can be applied to cluster data points with an expansive attribution repository for a high-resolution view of the cryptocurrency transaction landscape.
- **Massive Transaction Database:** Allows users to understand interactions with a powerful graph that traces the flow of funds over time and through the blockchain ecosystem.
- **Integrated Case Management:** Gives investigators a convenient way to save research, replay searches, export investigation reports, and collaborate with others involved in the investigation.



Analyze Computer Data to Accelerate Investigations

This market-leading solution for the quick and comprehensive analysis of computer extractions, helps forensics examiners and analysts shed light and gain insights from a user's activity. Easily search, filter, and sift through large computer data sets including internet history, downloads, recent searches top sites, locations, media, messages, and more.

Preview, Collect, Analyze:

Secure remote collection and analysis of iOS, Mac, and Windows endpoint data over an organization's network to give you the insights you need.

- Authenticate users and requests securely
- Review files live on the remote computer or mobile device
- Seamlessly collect logical files of interest
- Conduct full analysis of collected files

Key Capabilities:

- Collect and analyze files from iOS, Mac, and Windows remotely
- Conduct independent investigations at once
- Simultaneously connect and collect from multiple machines
- Preview and triage files across the network
- Collect application logs and logs (e.g., what was installed and when it was accessed)
- Provide user management and permissions, and perform audits via an online server



Cellebrite
SERVICES

Comprehensive Digital Intelligence Services Designed to Meet Your Needs

Cellebrite Services provide innovative professional services to ensure customer success at every stage of the digital transformation journey – from inception, through implementation, and ongoing optimization.

Our customer-centric services approach gives law enforcement agencies and enterprises access to a global team of professional domain experts providing the knowledge, technical solutions, expertise, and bespoke solutions needed to accomplish their mission.

Cellebrite Services offers four premier service offerings:





Empower Your Most Valuable Assets—Your People

Cellebrite has the largest and most experienced forensic instructor team with +140 active examiners and investigators from the public and private sectors, leveraging years of experience to assess operational needs and develop customized and tailored training plans and materials. We employ unique and varied learning experiences, designed to enhance the absorption and retention of your skills and knowledge. Our goal is to advise on leading DI practices for law enforcement agencies and enterprises to achieve their mission.

Extensive Training & Certification Catalogue:

- Mobile forensics certification track
- Computer forensics certification track
- Investigative analytics certification track
- Enterprise solutions certification track

All versatile delivery formats to support customer needs: Instructor Led Classroom, Virtual Live-Online and Online On-Demand.

Customized Training Solutions:

- Content development expanding to DI domain
- Qualification track per role
- Unique training aids
- Bite-sized learning tailored to customer needs and ecosystem
- Professional services
- Unique third-party partnerships

Advisory Services - Turning Insights into Actions:

- Strategic planning and consulting
- Mentoring and evaluation



Solve Your Most Demanding Digital Intelligence Challenges

Cellebrite Advanced Services has 10 secured labs located across the globe. Our team of leading industry experts from the public and private sector can also be deployed on-site at an organization to become an extension of your investigative team by providing advanced lawful digital data access and collection services.

Main Offering:



Industry-leading on-site or remote Digital Intelligence lab services



On-site deployment services for Cellebrite solutions



Technical workshops on advanced data collection and usage



Advanced cryptocurrency investigation techniques





Architect Solutions That Will Create a Lasting Impact

Cellebrite Value Realization Services implement ad-hoc solutions to achieve maximum impact of your Cellebrite solutions. The team develops unique customizations, integrating your Cellebrite solutions with peripheral systems, improving productivity, and accelerating data analysis in your investigation process. Cellebrite Value Realization Services can optimize your investigative processes and information sharing.

Solution Integration & Automation:

- Integration with ecosystem
- Process automation
- Bespoke services, e.g. file transfer service, media reduction service
- API implementation workshop

Investigation Accelerators:

- Apps decoding
- Customized media "library"
- CDR reformatting

Cellebrite Product Add-Ons:

- Designated reports
- Map services integration



We're Here to Support You

Global Support Teams, located across eight regional hubs, are available to rapidly diagnose any technical problems that you encounter.

This team of 40+ experienced forensic practitioners from the public and private sector provides support in 14 Languages across four communication channels: dedicated customer Portal (My Cellebrite), Mail, Live chat, and phone call.

Enhanced Support:

- Expedite severe cases
- Dedicated support engineers
- Customized webinars
- On-site health checks

Remote Global Support - Standard:

- Remote global service agreements
- Forums – community presence
- Professional webinars



ADD-ONS & ACCESSORIES

Complete Your Digital Forensic Toolbox.
Be Ready for Anything.

Our add-ons and accessories are designed to work seamlessly with Cellebrite UFED products, giving you reliable access to the Digital Intelligence that can advance the case and protect our communities.



TIPS AND CABLES SET WITH ORGANIZER

Extract and charge using the UFED cable set and compact tip connectors with master cables.



UFED MEMORY CARD READER WITH WRITE BLOCK

Access read-only or read-write formatting with this multi-format card reader.



UFED CAMERA

This evidence collection add-on captures images of the data, device, or screenshots from the device, even when data can't be extracted.



CASES

Protect your UFED device, supporting peripherals and accessories with ruggedized and standard cases.



MULTI SIM ADAPTER

Clone and extract using this universal adapter for NanoSIM, MicroSIM, and SIM cards.



UFED DEVICE ADAPTER

Extract data from source devices including SIM card, USB, and RJ45 using your PC's USB port.



FARADAY BAG

Isolate the mobile device from any external network signals.



CAR POWER ADAPTER WITH PHONE POWER-UP CABLE

Charge your UFED device in a vehicle.



PHONE POWER-UP CABLE

Recharge a mobile device via UFED during long extractions or when extracting from devices with a drained battery, no battery, or no charger.



UFED CHINEX

This field-ready add-on for the UFED Ultimate license, provides an end-to-end solution for extracting data and user locks from phones with Chinese chipsets.



ABOUT CELLEBRITE

Cellebrite's mission is to enable its customers to protect and save lives, accelerate justice, and preserve privacy in communities around the world. Cellebrite is the global leader in Digital Intelligence solutions for the public and private sectors, empowering organizations to master the complexities of legally sanctioned digital investigations by streamlining intelligence processes. Trusted by thousands of leading agencies and companies in more than 140 countries, Cellebrite's Digital Intelligence platform and solutions transform how customers collect, review, analyze and manage data in legally sanctioned investigations.

NORTH AMERICA

8045 Leesburg Pike
Suite 220
Vienna, VA 22182, USA
Tel. +1 703 828-7854
Fax. +1 201 848 9982

ISRAEL

94 Derech Shlomo Schmeltzer St
Kiryat Aryeh, Petah Tikva
PO Box 3925, Israel
Tel: +972 3 394 8000
Fax: +972 3 924 7104

UK

First Central 200
2 Lakeside Drive
Park Royal
London NW10 7FQ,
United Kingdom
Tel: +44 20 3949 9521

GERMANY

Herzog-Heinrich-Strasse 20
80336 München, Germany
Tel: +49 (0) 89 2 15 45 37 18
Fax: +49 (0) 89 2 15 45 37 99

LATAM

Av. Engenheiro Luiz
Carlos Berrini, 550-12º
Andar Brooklin
04571-000 São Paulo, Brazil
Tel: +55 11 3216 3800

APAC

150 Beach Road
#08-05/08 Gateway West
Singapore 189720
Tel: +65 6438 6240
Fax: +65 6438 6280

AUSTRALIA

Level 9, 2 Phillip Law Street
Canberra ACT 2601
Australia
Tel: +61 2 6243 4841

INDIA

Room No. 516, 5th Floor
Tower C Green Boulevard
B-Block Sector 62 Noida 201309
India
Tel: +91 9990155482

JAPAN

100-0005東京都千代田区丸の内3-2-2
丸の内二重橋ビル 2F
Level 2, Marunouchi Nijyubashi
Building, 3-2-2
Marunouchi, Chiyoda-ku,
Tokyo 100-0005 JAPAN
Tel: +81-3-6837-5461



To learn more visit us at www.cellebrite.com

Contact Cellebrite globally at www.cellebrite.com/contact



© 2021 CELLEBRITE. ALL RIGHTS RESERVED