

You can afford the Best

RealiteQ™ *New generation of remote control, SCADA & Telemetry solutions*

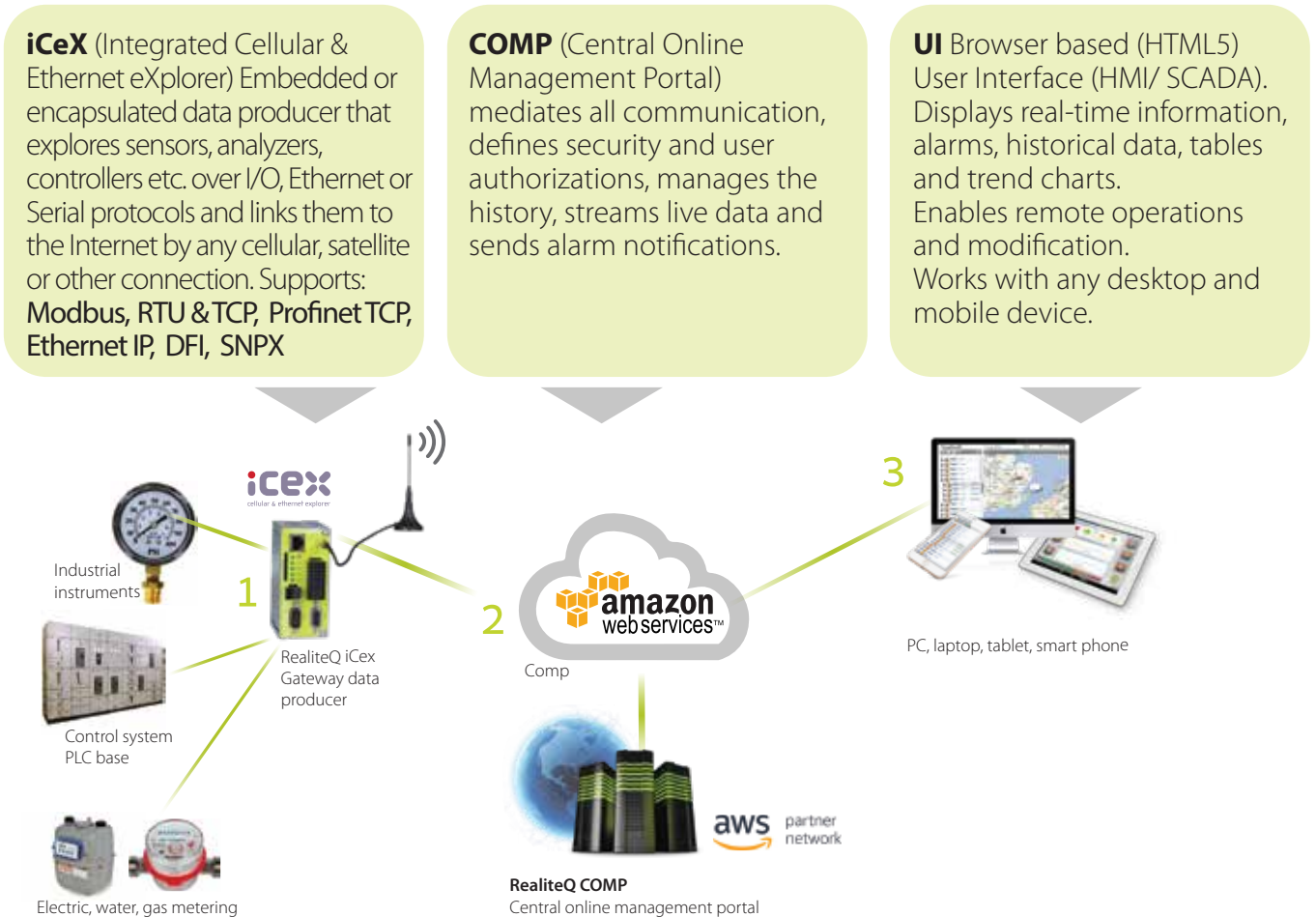
RealiteQ is the new (4th) generation of SCADA systems - Cloud-based, real-time remote control, telemetry & SCADA solution, developed by Reali Technologies Ltd. RealiteQ was developed as an IIoT "all in one" (Hardware, Software & User Interface) agnostic remote control management & operational platform.

IT/OT convergence - RealiteQ integrates information technology (IT) with operational technology (OT) used to monitor events, processes and devices, makes adjustments in networks sites, machines, enterprise and industrial operations and offers significant benefits in cost, quality, speed and reliability.

Data management - RealiteQ is much more than just a remote control system, it is a real-time end-to-end data management system, from the data acquisition to big data analytics. By using RealiteQ you are not only operating and controlling the system in real-time, you also can use the data to increase the efficiency.

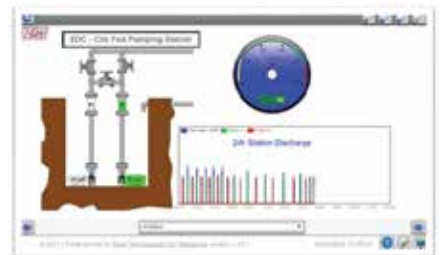
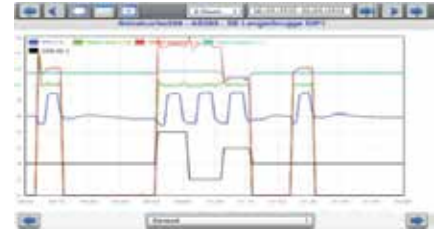
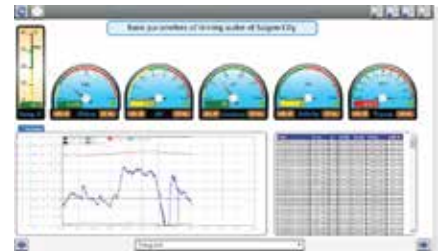
Proven technology - Today, RealiteQ is an advanced proven technology for a wide range of applications, such as water, wastewater, oil & gas, BMS, agriculture, energy, renewable energy and energy efficiency, as well as for industrial applications (including OEM), with installations in 40 countries on 5 continents. Among RealiteQ users are leading global enterprises: Johnson Control, Schneider Electric, Tesla, Volkswagen, L'Oréal, Solenis (Chemicals), ICL, Fluence, Unilever, Coca Cola, Citibank and others.

RealiteQ "All in One" SCADA system components - Hardware, Telemetry, Software & User interface browser:



RealiteQ system main features

- **Most advanced IIoT** (Industrial Internet of Things) **technology**
- **'ALL IN ONE' system** - Hardware, software and user interface browser
- **Affordable** - Affordable and available to any company and utility of any size and budget, thanks to the very low investment and low operating cost
- **Modular** - From a single unit to hundreds and even thousands of units per single project
- **No installation & maintenance headache** - Simple, fast and non-destructive installation. Seamless interfacing with existing hardware (sensors, analyzers, PLC etc.) and software
- **Geo map and Assets Health** - Real-time also present status (Assets Health) at a glance on a map (can also present actual values)
- **Hybrid System** - Can be upgraded, expanded and integrated with an existing SCADA
- **Built-in BI & statistical capabilities** - BI functions that use aggregated data and present the calculated results in real time to be used in dashboards and all parts of the system.
- **Two in One** - Support for both real time data and data logger on the same platform
- **Real-time bidirectional and multi-directional communication** (monitoring & control)
- **Unlimited number of users and data** at no extra cost
- **Customized screens, dashboards and reports** - Personalization of screens using built-in UI editor tool
- **Alarm handling:**
 - Flexible definition of escalation mode (unlimited escalation steps)
 - Flexible configuration of "Nagging" for alarms (may also combine nagging and escalation)
- Ability to monitor status and duration of alarms as part of the BI
- **Reports and Trends:**
 - Highly flexible user-definable
- **Smart dashboards** - Display several trends and tables within a single graphic screen
- **Timeframe** - In graphic screens, it is possible to configure a dedicated timeframe for each one of the trends/tables presented
- **AWS Partner Network (APN)** - RealiteQ is a member of the Amazon Partner Network
- **Optional** - enterprise server: Reali can provide an enterprise server
- **Cyber security** Reali Technologies has invested and continues to invest a lot in securing our system. RealiteQ uses the highly-secured Amazon server, with additional proprietary security means above it Including (optional) Two Factor Authentication (2FA).



RealiteQTM

realinfo@RealiteQ.com

www.RealiteQ.com

Tel: +972-9-749-4000

Local distributor contact details