

Climate & Water Crises

By 2030 we must cut our
Greenhouse Gas emissions by **half**

Or

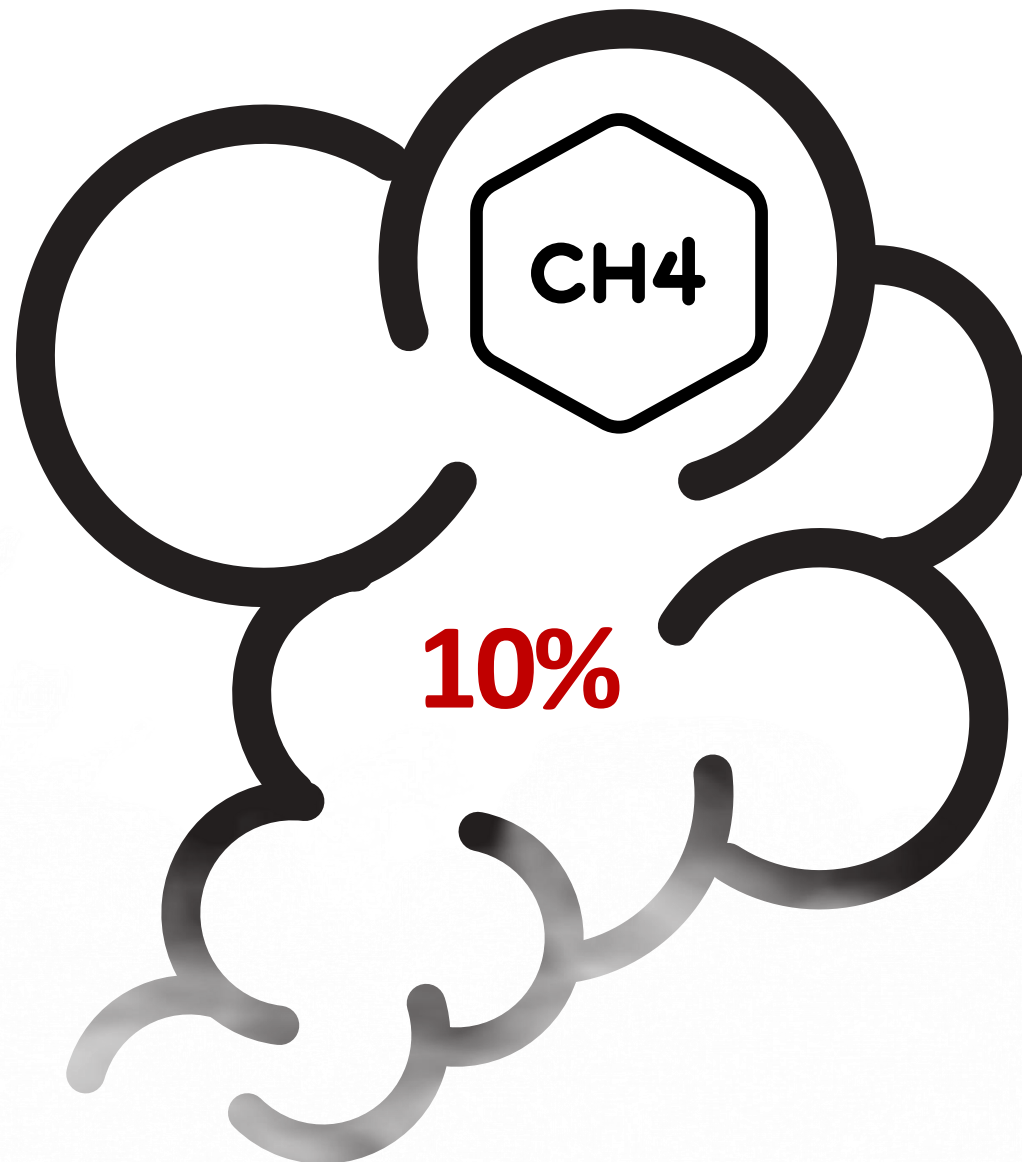
World temperatures will continue
to rise in **1.5°** causing sever water
shortage



10% of Methane emissions comes from conventional wastewater utilities



Sources: Mekorot, Shafdan Wastewater Treatment Plant; Global Methane Initiative

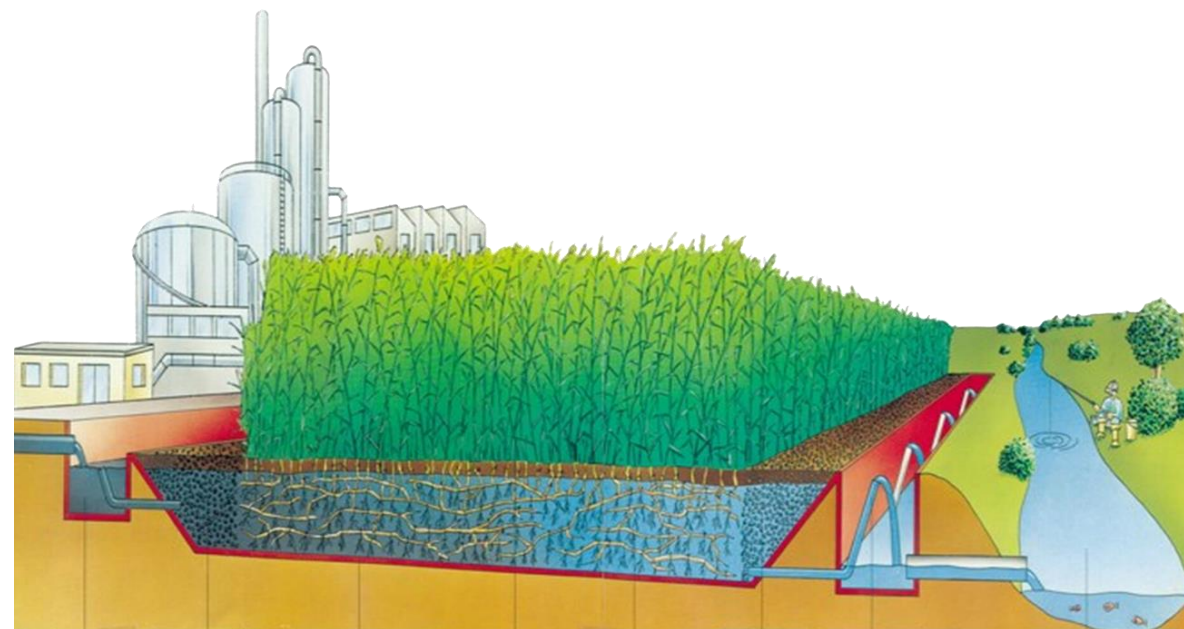


20% of global GHG emissions is Methane

Climate friendly, nature-based
solution for wastewater treatment:

Constructed wetlands

- ✓ Prevent Methane & reduce GHG emissions
- ✓ Low energy & maintenance
- ✓ High potential for water reuse & circular economy
- ✓ Fast implementation





Team



Michal Wimmer Luria
Co-Founder & CEO



Hadas Ganot Dotan
Co-Founder & COO



Yaki Timor
CTO

Design Partners



Carbon credit, impact & performance **MRV** platform

Making **revenues** for constructed wetlands by Rplace



Measure

Remote & automated data collection by sensors

Report

Data analysis and AI reports for certification and regulation

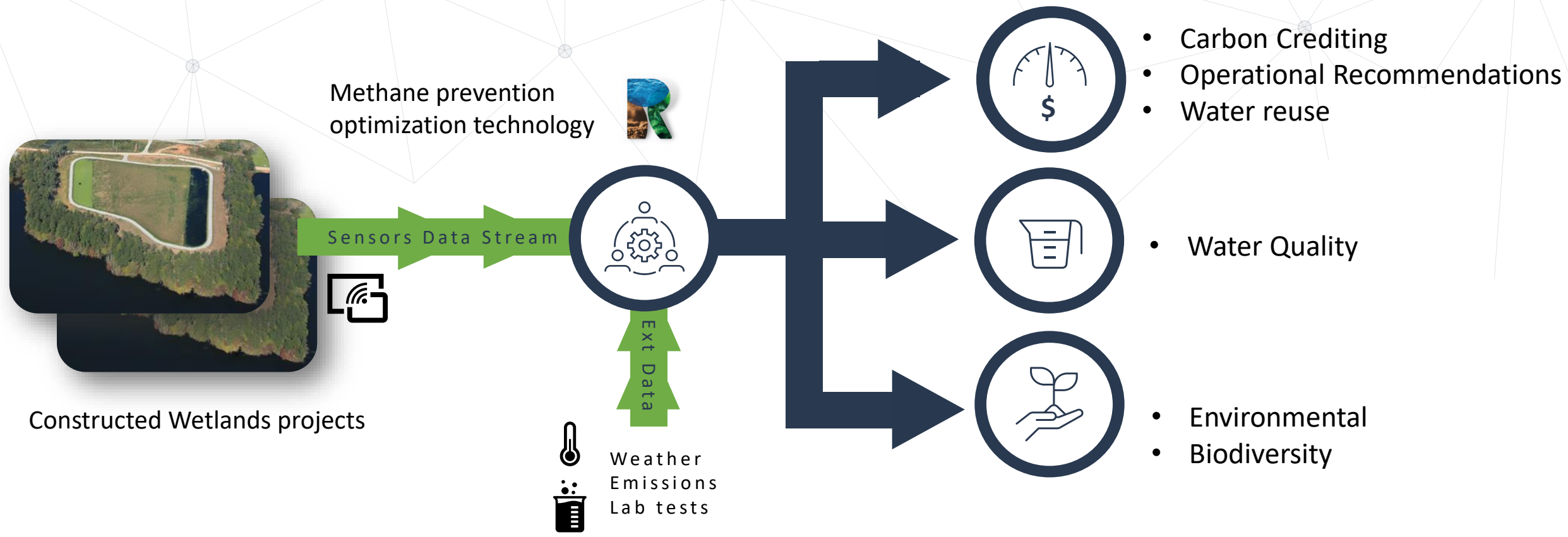
Verify

Full access and control for verification and validation



Constructed wetland data is translated to:

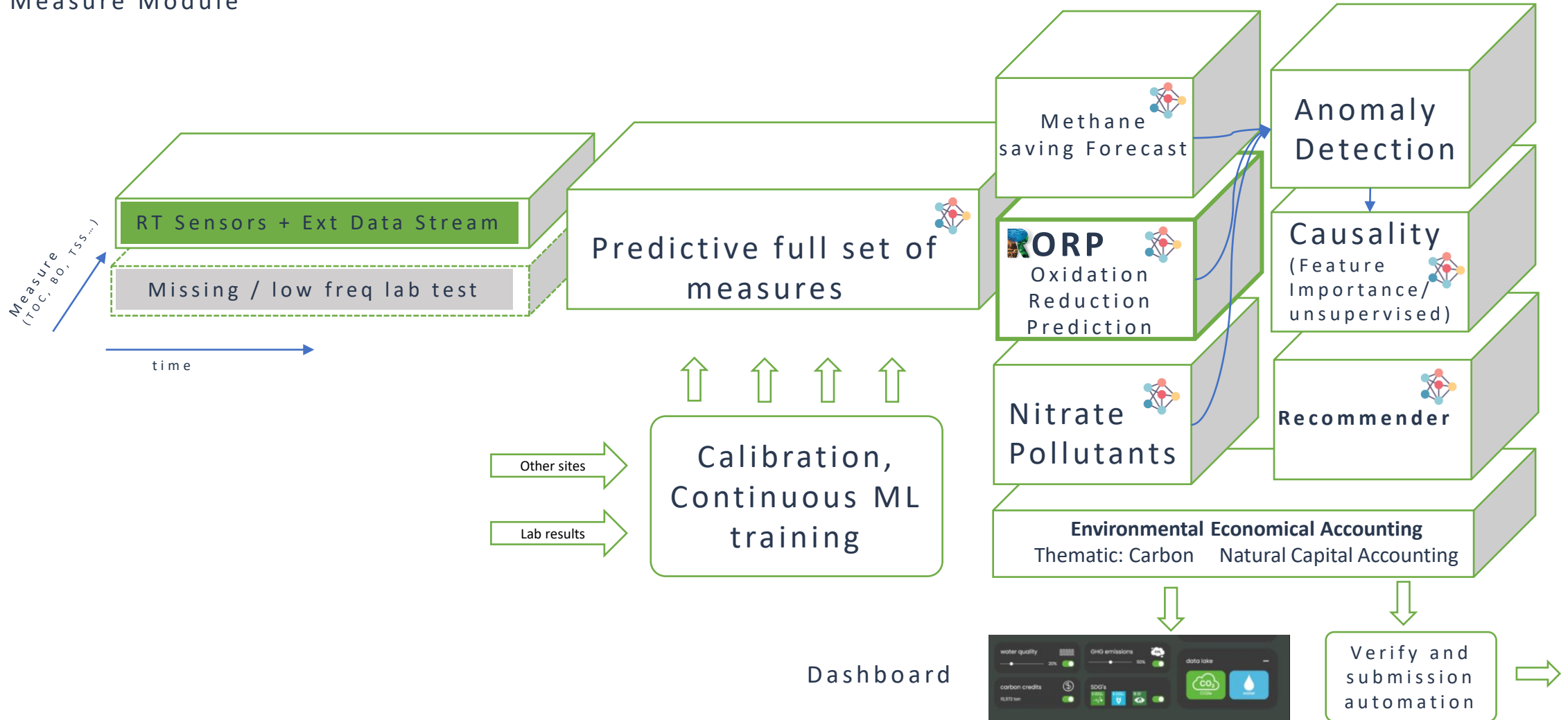
- Revenues
- Climate Mitigation & Adaptation
- Sustainability & Impact



TECHNOLOGY - ARCHITECTURE



Measure Module



PILOT

Rplace in Action: Gan Yoshiya Constructed Wetland project

PROJECT FACTS & FIGURES:

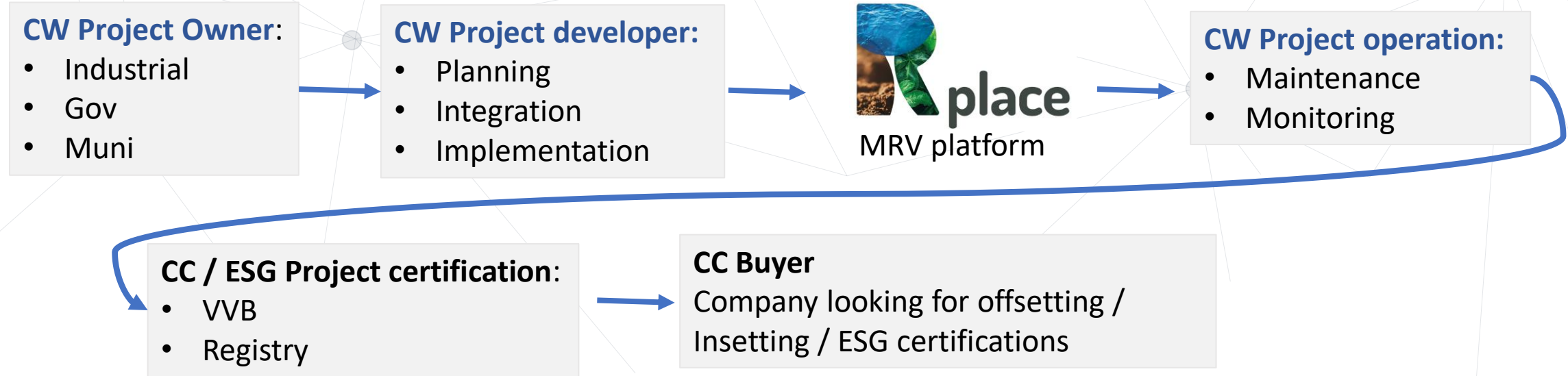
- 3 hectares
- 7000 metric tons CO₂e emissions avoided per year (estimated)
- **200,000\$** in carbon credits per year (estimated)
- Project life cycle 10 years with potential addition of 5 years



Milestones & Value Chain



* Constructed wetlands (CW) Carbon Credits (CC)



MRV platform users:

- CW project owner, developer, operation bodies
- CC certification bodies & buyer
- Regulation (Gov/Muni) bodies
- Academy, research, schools
- Communities, Visitors, NGOs

Revenues:

- SAAS (Management Platform)
- Carbon Credits / ESG

Markets Size until 2030

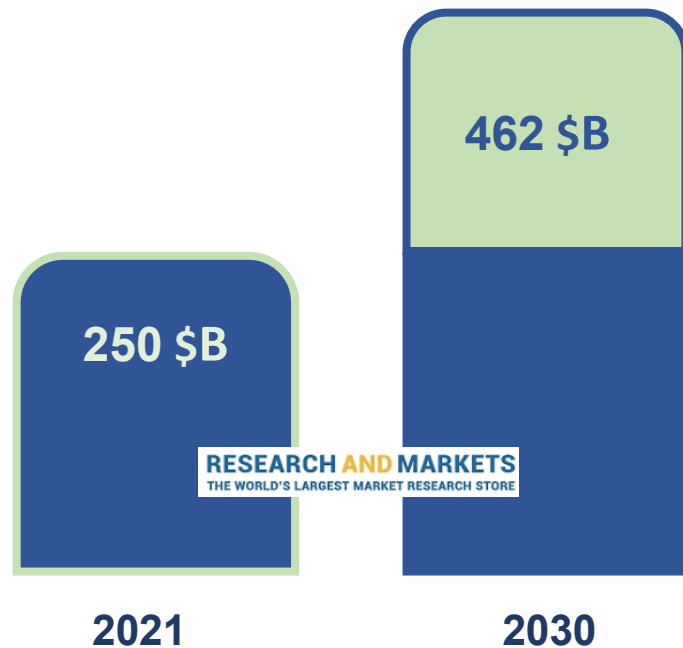
- Wastewater treatment - 460\$ BN
- Voluntary Carbon – 25\$ BN

Global Trends

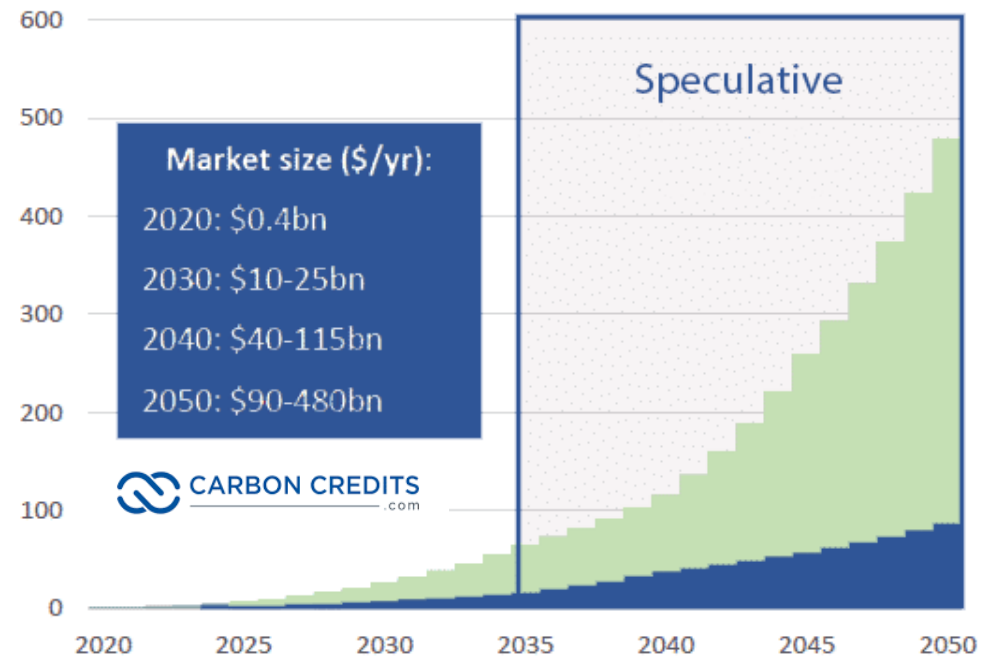
1. Sustainability
2. Digitalization
3. Decentralization



WWT market forecast to grow at a CAGR of 7.1%



Voluntary Carbon Market Value (\$bn/yr, 2000 prices)



2022

- Initial market validation: 3 Pilots, 1 signed LOI
- Study of the processes & challenges for generating revenues from carbon credit

2023

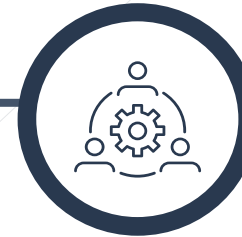
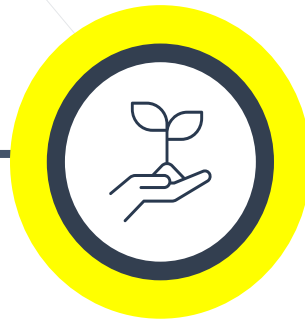
- Developing dashboard & remote monitoring capabilities
- Completing carbon credit certification process
- **Initial Fund 1.5M\$**

2024

- Maximizing technology
- Multi client platform
- Accelerate scaling

Long Term

Aquatic nature-based solutions for all wastewater types



Join us in accelerating constructed wetlands worldwide!

www.rplace.world