



52574

- ES SIERRA NEUMÁTICA**
- EN PNEUMATIC SAW**
- FR SCIE PNEUMATIQUE**
- DE DRUCKLUFTSÄGE**
- IT SEGA PNEUMATICA**
- PT SERRA PNEUMÁTICA**
- RO FERĂSTRĂU PNEUMATIC**
- NL PNEUMATISCHE ZAAG**
- HU PNEUMATIKUS FŰRÉSZ / MARKOLAT**
- RU ПНЕВМАТИЧЕСКАЯ ПИЛА**
- PL NÓŻ PNEUMATYCZNY DO BLACHY**

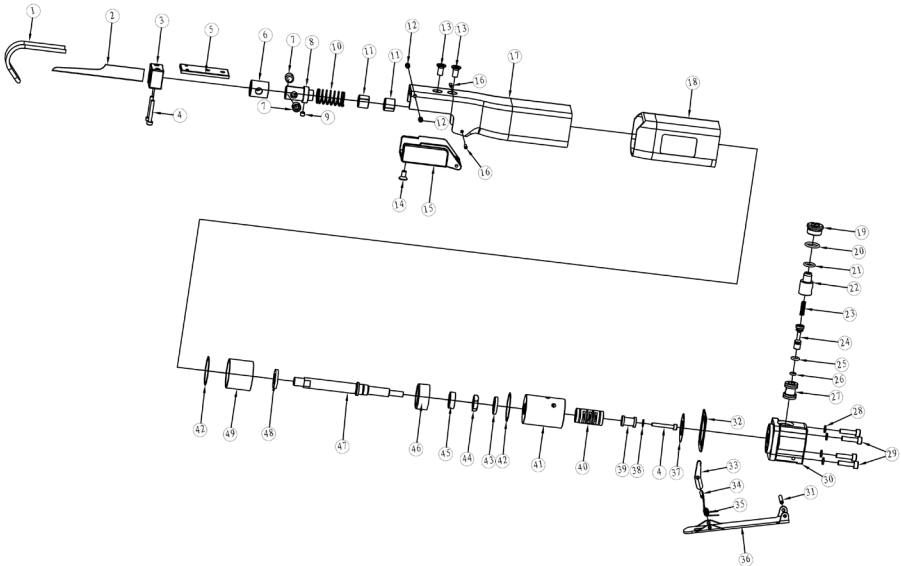


SPECIFICATIONS (EN)

- Free Speed 9,000BPM
- Air Consumption 6CFM@90PSI
- Air Outlet Front Exhaust
- Air Inlet 1/4"
- Net Weight 0.54kg

ESPECIFICACIONES (ES)

- Velocidad libre 9,000BPM
- Consumo de aire 6CFM@90PSI
- Salida de aire Salida delantera
- Entrada de aire 1/4"
- Peso neto 0.54kg



Part No.	Description	Q'ty
1	bracket	1
2	saw blade	1
3	guide block	1
4	hex. screw	3
5	guide block seat	1
6	collet housing	1
7	screw	2
8	saw blade collet	1
9	hex. screw	1
10	spring	1
11	bushing	2
12	hex. screw	2
13	cross screw	2
14	cross screw	1
15	exhaust cover	1
16	pin	2
17	housing	1
18	sleeve	1
19	nut	1
20	O-ring	1
21	O-ring	1
22	fluid adjustor	1
23	sping	1
24	latchrelease pin	1
25	O-ring	1

Part No.	Description	Q'ty
26	O-ring	1
27	valve bushing	1
28	spring gasket	4
29	hex. screw	4
30	air valve	1
31	pin	1
32	sealing gasket	1
33	trigger block	1
34	pin	1
35	spring	1
36	tigger	1
37	paper gasket	1
38	gasket	1
39	conversion valve	1
40	conversion valve bushing	1
41	conversion valve sleeve	1
42	sealing gasket	2
43	rear buffer	1
44	nut	1
45	piston flange	1
46	piston	1
47	piston rod	1
48	front buffer	1
49	cylinder	1

52574



www.jbmcamp.com

CIM La Selva - Ctra. de l'Aeroport Km. 1,6 Nave 2.2
17185 Vilobí d'Onyar (Girona)
jbm@jbmcamp.com
Tel. +34 972 405 721
Fax. +34 972 245 437