

**SERIE594****MODULAR FURNITURE SET (11PCS) - EXTENSION WITH CORNER CABINET (REF.16492)****ACERO  
STEEL****INOX  
SS****113,80Kg****IT CONTAINS**

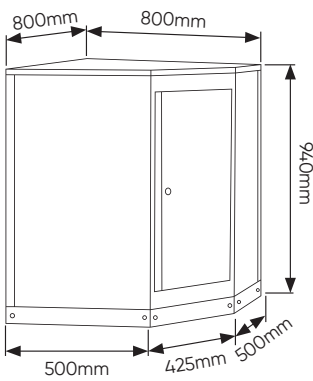
x1	16491	CORNER WALL CABINET
x1	16492	CORNER CABINET WITH MDF BOARD
x1	16516	SET OF 4 PEG BOARDS FOR CORNER CABINET (REF. 16492)
x1	16836	STAINLESS STEEL CORNER BOARD (REF.54327)
x4	16561	SUPPORT BAR (REF.54327)

The module includes front and side curbs

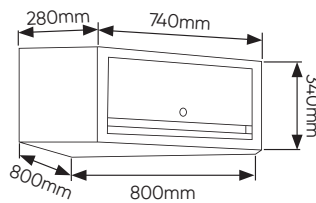
**JBM CAMPLLONG S.L.**CIM La Selva - Ctra. Aeropuerto, Km 1,6 Nave 2.2 CP 17185  
Vilobí d'Onyar - GIRONA - ESB17419292 - SPAIN**www.jbmcamp.com**  
**jbm@jbmcamp.com**  
**+34 972 24 55 53**

COMPONENTS

16491

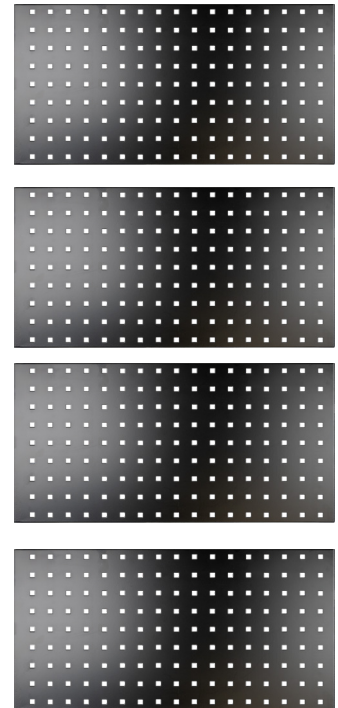


16492



16516

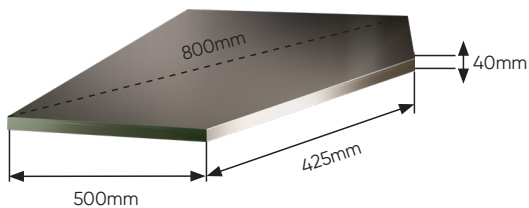
225x38x775mm



16561

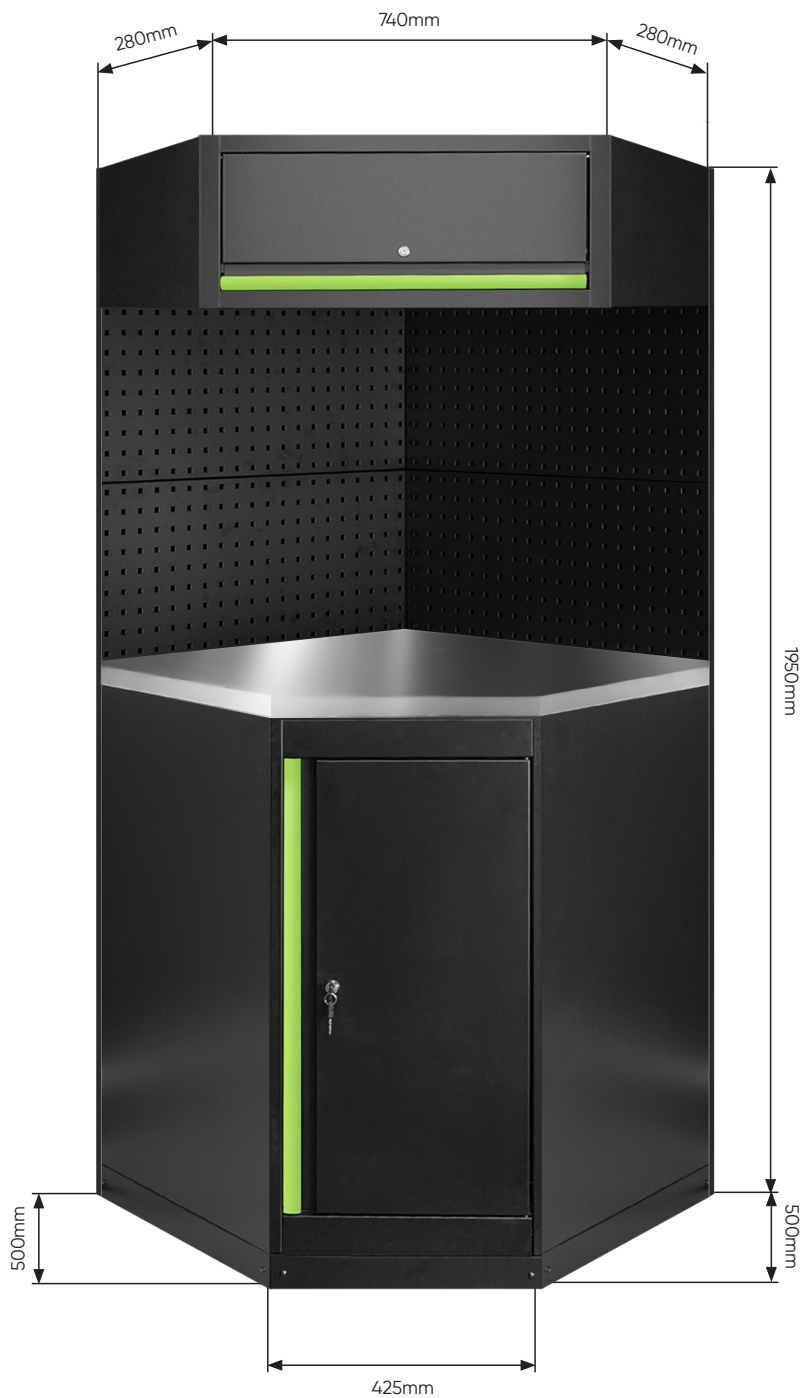


16836



COMPONENTS

SERIE594



AVAILABLE COLORS

SERIE594R



17862

CABINET PULL HANDLE SET

17861

SERIE594B



17862

CABINET PULL HANDLE SET

SERIE594Y



17863

CABINET PULL HANDLE SET

SERIE594O



17864

CABINET PULL HANDLE SET

SERIE594G



17865

CABINET PULL HANDLE SET

SERIE594P



17866

CABINET PULL HANDLE SET

SERIE594K



17960

CABINET PULL HANDLE SET

SERIE594S



17961

CABINET PULL HANDLE SET



Our modular furniture sets are delivered with standard green handles, but you also receive handles in the color of your choice from our palette. This way, you can easily and quickly customize your set to match your workshop's corporate colors. A practical personalization method that helps you maintain a professional and consistent image in your workspace.