



GROUND POWER CONNECTIVITY SYSTEM

In partnership with Beam Connectivity, we can provide an advanced end-to-end connectivity solution, which revolutionises seamless real-time monitoring and instant alerts for your Ground Power Units.

Key features

- Minimise stand downtime
- Cut costs on unnecessary call-outs
- Monitor aircraft power usage effectively
- Reduce stand delays due to reset issues
- Gain real-time monitoring capabilities across all your GPUs
- Improved stand turnarounds
- Pre-emptive maintenance
- 12 months warranty

By pairing the GPU with a state-of-the-art connectivity controller, critical performance and diagnostic data are collected via Modbus TCP or RTU. These data are then decoded, filtered, and securely transmitted in near-real-time to the cloud via 4G, with 2G / 3G also used as a fallback. The connectivity controller also stores data locally, to prevent data from being lost in the event of a drop in cellular connection.

Get live Ground Power Status straight to your laptop

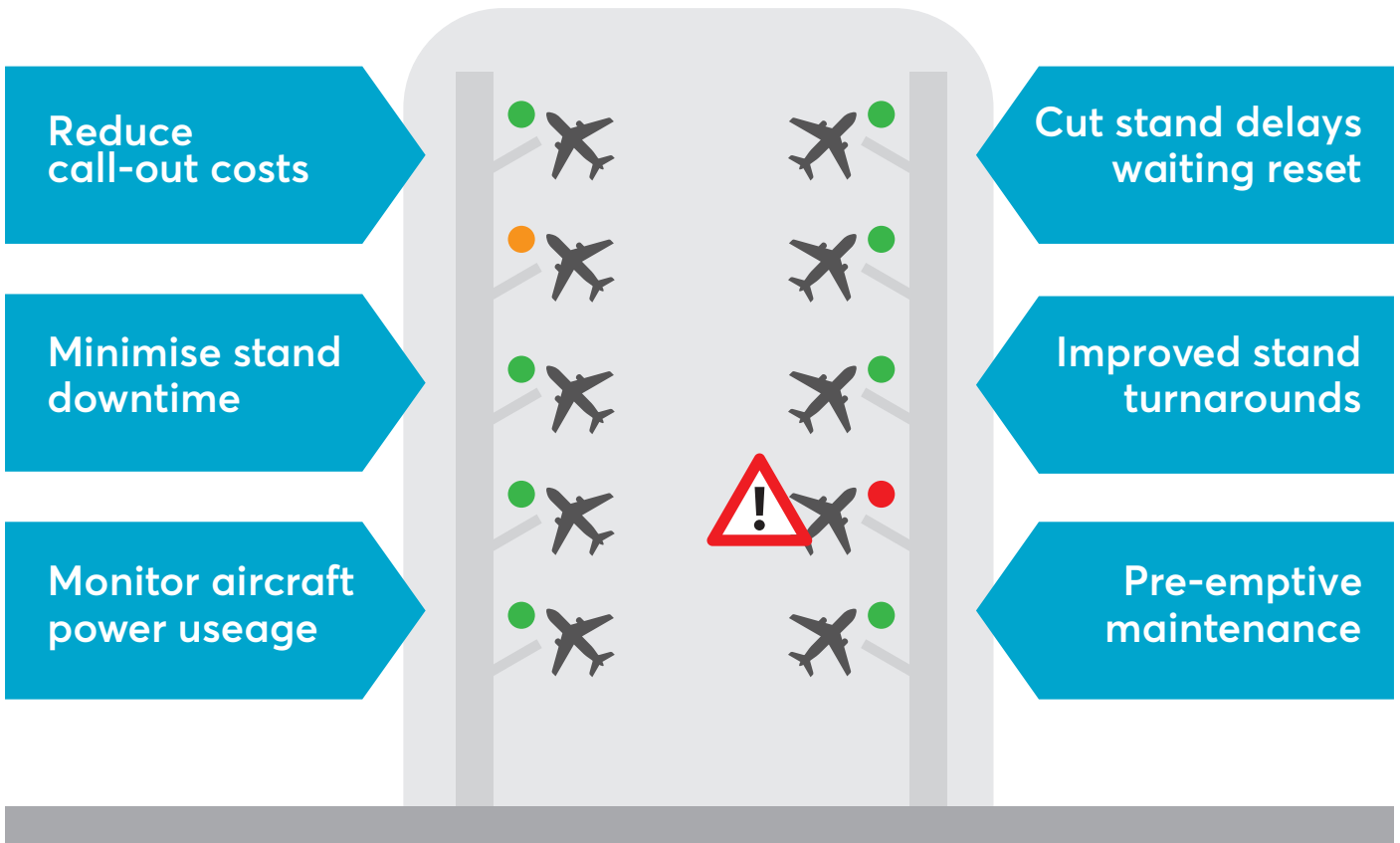


Call or email us at **0800 170 1515 / sales@jlc-group.co.uk**

www.jlc-group.co.uk



Revolutionise the way you manage ground power at your airport

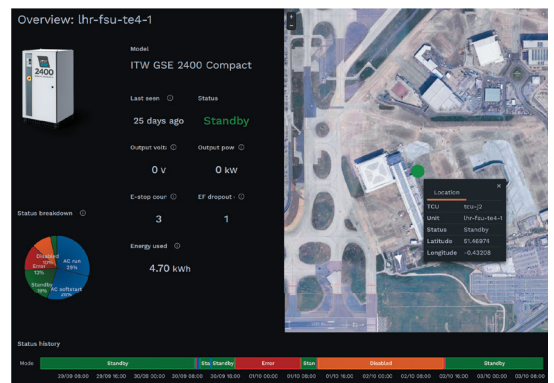


Created in partnership with



The telemetry data collected not only feeds into Beam's powerful cloud platform but is also meticulously analysed and stored for future reference. Duty engineers can effortlessly access this information through an intuitive management portal and mobile app, providing them with the tools necessary for proactive system oversight.

Moreover, the solution enables engineers and key stakeholders to configure proactive alarms, ensuring they receive immediate notifications the moment an event or anomaly arises. This realtime alerting system allows for swift responses, preventing potential issues from escalating and disrupting the customer experience.



Call or email us at 0800 170 1515 / sales@jlc-group.co.uk