

Image Quiz

Citation: Bandara JMRP¹, Udupihille JJKH², Rosairo S², 2024. Lady With Painful Double Vision. Sri Lanka Journal of Medicine, pp 84-86. DOI: <https://doi.org/10.4038/sljm.v33i1.500>

Lady With Painful Double Vision

JMRP Bandara¹, JJKH Udupihille², S Rosairo²

¹Department of Medicine, Faculty of Medicine, University of Peradeniya, Sri Lanka.

²Department of Radiology, Faculty of Medicine, University of Peradeniya, Sri Lanka

Correspondence:

JMRP Bandara

E-mail: ruwanthibandara@yahoo.com

 <https://orcid.org/0000-0003-0971-3050>

A 63-year-old female with hypertension, presented with headache, drooping of the right eyelid and worsening double vision over few hours duration. A non-contrast CT of the brain was performed followed by an MRI brain.

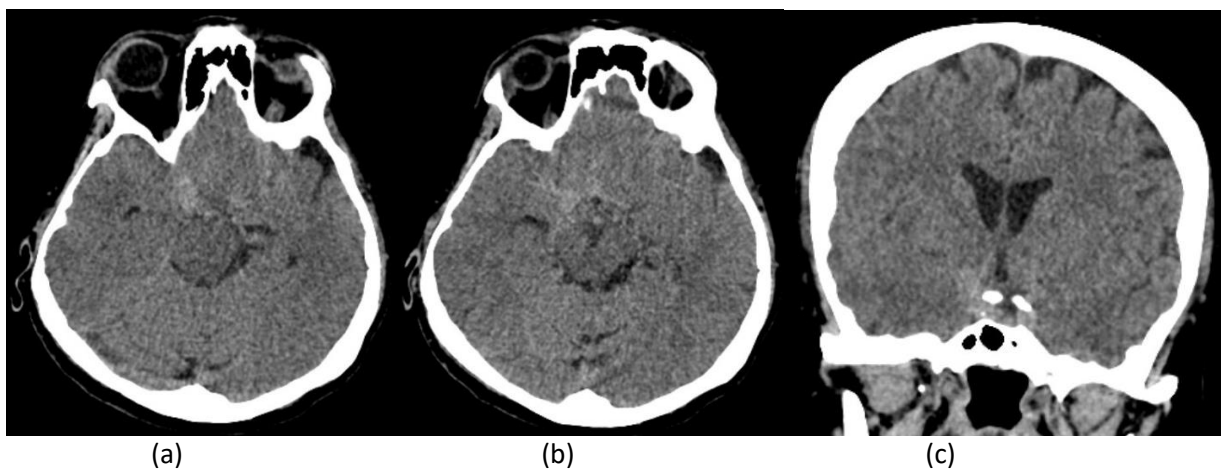


Figure 1: Axial (a, b) and coronal (c) images of non-contrast CT brain

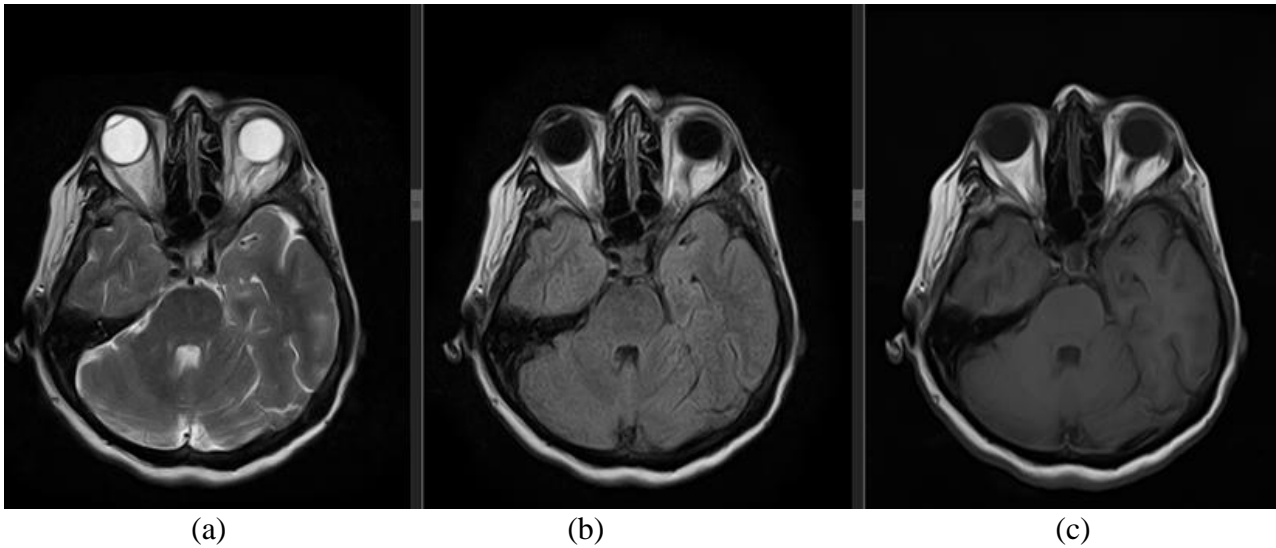


Figure 2: MRI brain axial images (a) T2W (b) FLAIR (c) T1W

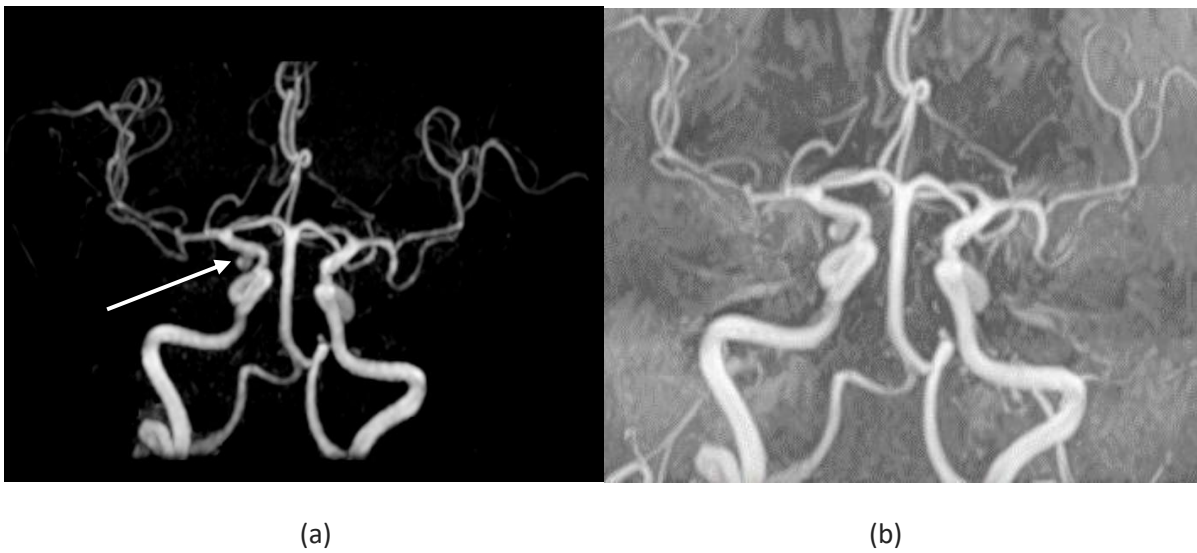


Figure 03: 3D cerebral MRA

1. Describe the radiological findings.
2. What is the complete diagnosis?

ANSWER

Findings

Non contrast CT - High density material noted in the right sylvian fissure and suprasellar cistern consistent with subarachnoid haemorrhage.

MRI/ MRA - An out pouching noted in the inferior aspect of right supraclinoid internal carotid artery, directing inferiorly and posteriorly towards right cavernous sinus. No evidence of thrombosis.

Complete diagnosis - Supraclinoid internal carotid artery aneurysm rupture with a subarachnoid haemorrhage.

DISCUSSION

Supraclinoid internal carotid artery (ICA) aneurysms usually arise at the origin of the

- posterior communicating artery or
- anterior choroidal artery (1).

They usually present with headache, progressive visual loss and ophthalmoplegia.

TREATMENT

Treatment options include;

- surgery
- coil embolization.
- deconstructive parent vessel occlusion
- endoluminal vessel reconstruction by flow diverters (2).

REFERENCES

1. Hendricks, Benjamin K MD; Spetzler, Robert F MD. Supraclinoid Internal Carotid Artery Aneurysm Clipping Complicated by Aneurysm Dome Origin of the Anterior Choroidal Artery: 2-Dimensional Operative Video. *Operative Neurosurgery* 19(1): p E41, July 2020. | DOI: 10.1093/ons/opaa040
2. Kemmling, A., Eckey, T., Schramm, P. (2018). Supraclinoid Internal Carotid Artery Aneurysm: Incidental Aneurysm, Flow Diverter Deployment Practicing in a 1:1 3D-printed Aneurysm Model, Complete Occlusion by Coil-Assisted p64 Flow Diversion. In: Henkes, H., Lylyk, P., Ganslandt, O. (eds) *The Aneurysm Casebook*. Springer, Cham. https://doi.org/10.1007/978-3-319-70267-4_41-1