

CORONAVIRUSES DISEASE -A PANDEMIC DISASTER: A REVIEW

Navneet Kumar Verma*, Asheesh Kumar Singh, Prem Chand Mall, Vikas Yadav and Rupali Jaiswal

Faculty of Pharmacy, Buddha Institute of Pharmacy, GIDA, Gorakhpur, UP, India-273209.

***Corresponding Author: Dr. Navneet Kumar Verma**

Faculty of Pharmacy, Buddha Institute of Pharmacy, GIDA, Gorakhpur, UP, India-273209.

Article Received on 09/03/2020

Article Revised on 29/03/2020

Article Accepted on 18/04/2020

ABSTRACT

Coronaviruses is a group of highly diverse single stranded RNA virus. Corona included fever fatigue cough cold. Coronaviruses (CoV) are immeasurable family of viruses that cause sickness ranging from the common cold to more severe viruses such as Middle East Respiratory Syndrome (MERS-CoV) and Severe Acute Respiratory Syndrome (SARS-CoV). 2-14 days represents the current official estimated range for the novel coronavirus COVID-19. Coronaviruses are a group of enveloped viruses with nonsegmented, single-stranded, and positive-sense RNA genomes. Apart from infecting a variety of economically important vertebrates (such as pigs and chickens), six coronaviruses have been known to infect human hosts and cause respiratory diseases. At this times, several life-threatening viruses have emerged and coronavirus are one of these. Coronaviruses are characterized by crown-like spike that project from their surface, an unusually large RNA genome, replication strategy.

KEYWORDS: Corona, SERS-CoV, MERS-CoV, Virion, respiratory, viruses, Hcov, host, RNA.**INTRODUCTION**

Coronavirus (COVID 19) family of viruses noted for holding stains that doubtless deadly diseases in mammals and birds. Coronavirus disease (COVID-19) is a new strain that was discovered in 2019 and has not been formerly acknowledged in humans. The S protein envelope spike is important for corona virus. The S protein mediates the Receptor Protein and Membrane Fusion crucial for determining host capacity and transmission. This S-Protein is functionally divided into two domains S1 and S2.S1 domain is responsible for receptor binding and S2 domain is responsible for Cell membrane fusion. Thorough investigations found that SARSCoV was transmitted from civet cats to humans and MERS-CoV from dromedary camels to Human beings. Several known coronaviruses are socializing in animals that have not yet infected humans. Common signs of contamination include Corona viruses are species in the genera of virus belonging to one of two subfamilies Coronavirinae. Corona viruses can cause multiple system infections in various animals and mainly respiratory tract, gastrointestinal, central nervous system infections in humans, M livestock, avian, bat, mouse and many other wild animals such as Severe Acute respiratory syndrome (SARS) and Middle East respiratory syndrome (MERS).^[1-3] Since 2002 outbreaks of the Severe acute respiratory syndrome (SARS) and in 2012 Middle East respiratory syndrome (MERS), the possibility of corona virus transmission from animals to human has been proved.^[4,5] There are six known HCoV's have been identified, namely HCoV- 229E, HCoV-NL63 (α -coronavirus), HCoV-OC43, HCoV-HKU1(β -

coronavirus), severe acute respiratory syndrome coronavirus (SARS-CoV) and Middle East respiratory syndrome coronavirus (MERS-CoV) are globally circulated in the human population.^[6] In severe cases, especially in elderly, children and immunocompromised patients these four HCoV's can cause life-threatening pneumonia and bronchiolitis.^[7,8] Coronaviruses make up a large family of viruses that can infect birds and mammals, including humans, according to world health organisation (WHO). These viruses have been responsible for several outbreaks around the world, including the severe acute respiratory syndrome (SARS) pandemic of 2002-2003 and the Middle East respiratory syndrome (MERS) outbreak in South Korea in 2015. Most recently, a novel coronavirus (SARS-CoV-2, also known as COVID-19) triggered an outbreak in China in December 2019, sparking international concern. While some coronaviruses have caused devastating epidemics, others cause mild to moderate respiratory infections, like the common cold.

HISTORY OF CORONAVIRUS

In 1960, Corona virus was first identified as a cause of the common cold. In Canada one study carried out in 2001, more than 500 patients presented with flu-like symptoms. Virological analyses showed that 3.6% of these cases were positive for the HCoV-NL63 strain by polymerase chain reaction (PCR). Corona virus was considered a relatively simple, nonfatal virus upto 2002. However in 2002-2003 in Guangdong province in China, which resulted in spread to many other countries, including Vietnam, Hong Kong Singapore, Thailand,

Taiwan and the United States of America, caused severe acute respiratory syndrome (SARS) and high mortality rates in 1000 patients. After this outbreak, microbiologists and infectious disease experts focused on the understanding the pathogenesis of the disease and discovered that this infection was caused by a new form of corona virus. A total of 8096 individuals were infected with corona virus, resulting in 774 deaths, thus in 2004, the Centers for Disease Control and Prevention (CDC) and World Health Organization (WHO) declared a state of emergency. Coronavirus is not a stable virus demonstrated by the evolution of this virus and can adapt to become more virulent, even lethal to human. In 2012 in Saudi Arabia resulted in many deaths and spread first to other countries in the Middle East and then worldwide.^[9]

THE STRUCTURE OF VIRION

Coronavirus virions are round and sometimes pleiomorphic virions of approximately 80 to 120 nm in diameter. The club-shape spike projections emanating from the surface of the virion is the most prominent features of coronaviruses. Nucleocapsid is in the envelope of the virion. It contain positive-strand RNA, with largest RNA genome approximately 30 kb.^[10] There are four main structural proteins in coronavirus particles. These are the spike (S), membrane (M), envelope (E), and nucleocapsid (N) proteins, all of which are encoded within the 3' end of the viral genome.

S Glycoproteins

Spike (S), in the electron microscope, the type I glycoprotein that forms the peplomers on the virion surface, giving the virus its corona- or crown-like morphology. These are located outside the virion and give the typical shape to the virion. S proteins bind to the virion membrane via the C-terminal transmembrane regions and they interact with M proteins.

M Glycoproteins

The most abundant structural protein in the virion is the membrane (M) protein. It is a small (□25-30 kDa) protein with 3 transmembrane domains and thought to give the virion its shape. It has a small Nterminal glycosylated ectodomain and a much larger Cterminal endodomain that extends 6-8 nm into the viral particle.^[11,12] Despite being co-translationally inserted in the ER membrane. The M protein plays a key role in regenerating virions in the cell. N protein forms a complex by binding to genomic RNA and M protein triggers the formation of interacting virions in this endoplasmic reticulum-Golgi apparatus intermediate compartment (ERGIC) with this complex.

E Glycoproteins

The E protein (□8-12 kDa) is found in small quantities within the virion. E protein from coronaviruses have common architecture and are highly divergent. These are small proteins composed of approximately 76 to 109 amino acids. Coronavirus E proteins play a critical role

in the assembly and morphogenesis of virions within the cell. The membrane topology of E protein is not completely resolved but most data suggest that it is a transmembrane protein. The E protein has a N-terminal ectodomain and a C-terminal endodomain and has ion channel activity. The E protein has other functions but also facilitates assembly and release of the virus. The ion channel activity in SARS CoV E protein is not required for viral replication but is required for pathogenesis.^[13,14]

N Glycoproteins

The N protein constitutes the only protein present in the nucleocapsid. It is composed of two separate domains, an N-terminal domain (NTD) and a C-terminal domain (CTD), both capable of binding RNA in vitro, but each domain uses different mechanism to bind RNA. It has been suggested that optimal RNA binding requires contributions from both domains.^[15,16] N protein is also heavily phosphorylated and phosphorylation has been suggested to trigger a structural change enhancing the affinity for viral versus non-viral RNA. N protein binds the viral genome in a beads-on-a-string type conformation. The TRSs and genomic packaging signal; two specific RNA substrates have been identified for N protein. The genomic packaging signal has been found to bind specifically to the second, or C-terminal RNA binding domain.^[17,18] A 5th structural protein, the hemagglutinin-esterase (HE), is present in a subset of β-coronaviruses. The protein acts as a hemagglutinin, contains acetyl-esterase activity and binds sialic acids on surface glycoproteins. These activities are thought to enhance S protein-mediated cell entry and virus spread through the mucosa. HE enhances murine hepatitis virus (MHV) neurovirulence.^[19]

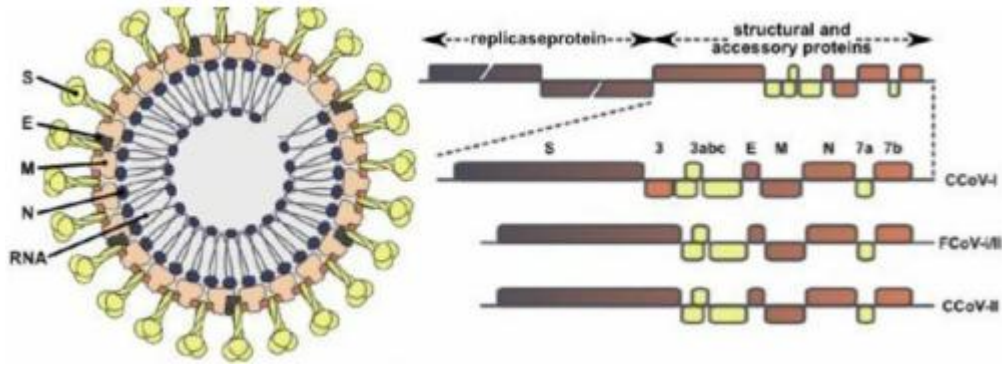


Fig. 1: Structure of Coronavirus.

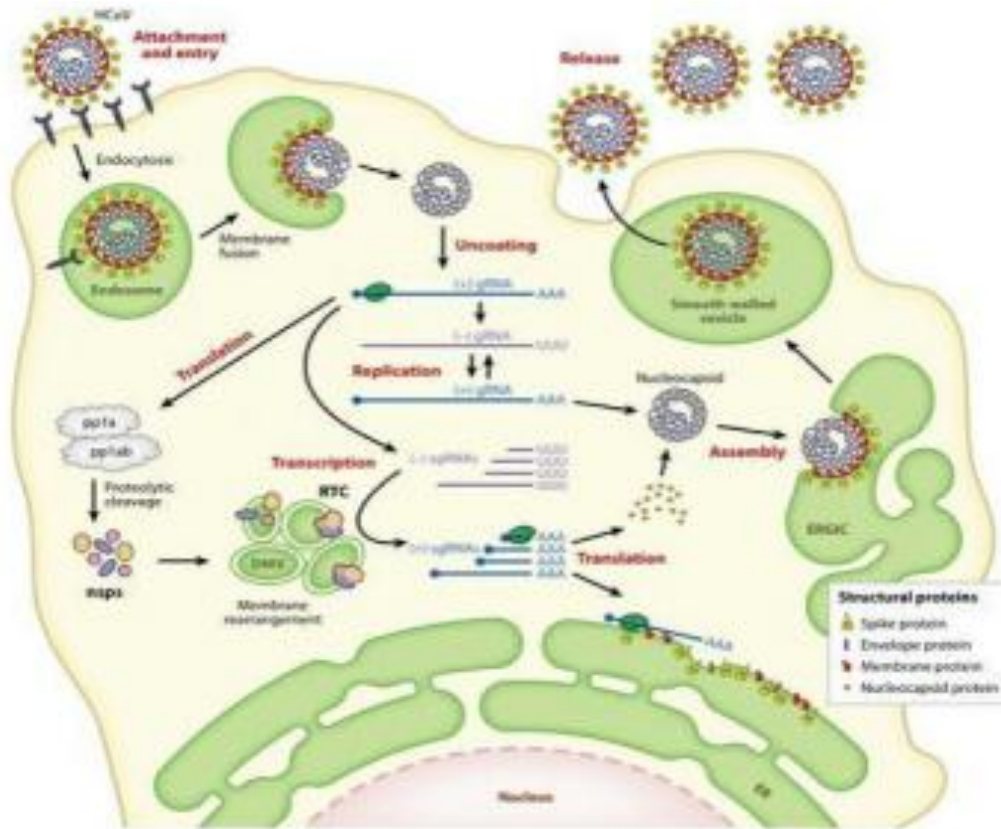


Fig. 2: Life Cycle of Coronavirus.

SYMPTOMS OF CORONAVIRUS

The infection causes fever just as respiratory manifestations: dry hack, trouble relaxing. It can also cause diarrhoea and body aches. Symptoms in severe cases include pneumonia, kidney failure and even death, according to the World Health Organization. The symptoms of this infection might appear the same as those for a cold or flu, but at this time the Centre for Disease Control and Prevention's suggest screening only people who have recently travelled to Wuhan or who have had close prolonged contact with a 2019-n Coronavirus -infected person. The CDC can affirm the infection with an indicative test that it created dependent on the hereditary succession of the infection that Chinese wellbeing authorities acquired and made openly available on Jan. 12. The World Health Organization's Emergency Committee on the coronavirus said in a Jan.

22 news meeting that almost seventy five percent of cases have been in individuals over age 40 and that "cases who passed on - many had huge hidden conditions" like cardiovascular malady and diabetes. In any case, there are affirmed cases in any case sound, youthful people.

Symptoms include

1. Sneezing
2. Runny nose
3. Cough
4. Watery diarrhea
5. Fever in rare cases
6. Sore Throat
7. Exacerbated asthma

Types

The human corona viruses are currently six recognized types that can infect humans. They are;

1. 229E (alpha corona virus)
2. NL63 (alpha corona virus)
3. OC43 (beta corona virus)
4. HKU1 (beta corona virus)
5. MERS-Coronavirus (Middle East Respiratory Syndrome-Corona virus)
6. SARS-Coronavirus (Severe Acute Respiratory Syndrome-Corona virus)

MERS and SARS this two are more dangerous types

MERS
MERS-Coronavirus, which causes Middle East Respiratory Syndrome (MERS), was first recognized in 2012. This serious respiratory disease previously surfaced in Saudi Arabia and, from that point forward, has spread to different nations. Side effects incorporate fever, windedness, and hacking. The ailment spreads through close contact with individuals who have just been tainted. Be that as it may, all instances of MERS are connected to people who have as of late came back from movement to the Arabian Peninsula. MERS is lethal in 30 to 40percent of individuals who contract it.

SARS

SARS-Coronavirus which causes Severe Acute Respiratory Syndrome (SARS), It normally prompted a dangerous type of pneumonia. SARSCoronavirus is one of a kind. It can taint both the upper and lower respiratory tract and can likewise cause gastroenteritis. The side effects of SARS create through the span of a week and start with a fever. At an early stage in the condition, individuals create influenza like manifestations, for example,

- Dry coughing
- Chills
- Diarrhoea
- Breathlessness
- Aches

Pneumonia, a serious lung contamination, may grow a short time later. At its most progressive stage, SARS causes disappointment of the lungs, heart, or liver. During the pandemic, there were 8,098 affirmed instances of SARS with 774 fatalities. This is equivalent to a death pace of 9.6 percent.

HUMAN CORONAVIRUSES

There are seven known strains of human crown infections;

1. Human corona virus OC43 (HCoV-OC43)
2. Human corona virus 229E (HCoV-229E)
3. Human corona virus HKU1
4. SARS-COV
5. Human corona virus NL63 (HCoV-NL63, New Haven corona virus)
6. Centre as respiratory disorder corona virus (MERS-COV), recently known as novel corona virus 2012 and

HCoV-EMC.

7. Novel corona virus (2019-nCoV), otherwise called Wuhan pneumonia or Wuhan corona virus, (Novel right now newfound, or recently started, and is a placeholder name).

Transmission

Crown infections are zootoxic, which implies they are transmitted among animals and people. They are circling in creatures and a portion of these corona viruses have the ability of transmitting among creatures and people. It is no doubt transmitted through hacking and sniffing, just like the case with flu and other respiratory infections, Corona viruses can spread in the accompanying manners: Coughing and sniffing Crown diseases are zootoxic, which infers they are transmitted among creatures and individuals. Contacting or warmly greeting an individual that has the infection can pass the infection starting with one individual then onto the next. Reaching a surface or item that has the infection and afterward contacting your nose, eyes or mouth. Analysts found that 22 percent had direct introduction to the meat showcase, and 32 percent had contact with individuals who had a fever or respiratory illness.

Diagnosis

Medicinal services supplier may arrange research centre tests on respiratory examples and serum (some portion of your blood) to recognize human crown infections. Research facility testing is bound to be utilized on the off chance that you have serious sickness or are associated with having MERS. In the event that you are encountering indications, you should educate your medicinal services supplier concerning any ongoing travel or contact with creatures. Most MERS-Coronavirus contaminations have been accounted for from nations in the Arabian Peninsula. In this way, revealing a movement history or contact with camels or camel items is significant when attempting to analyze MERS.

Prevention

For the crown infection to forestall covering mouth and nose when hacking and wheezing, disease spread incorporates standard hand washing and furthermore manifestations of respiratory ailment. The World Health Organization has exhorted individuals to keep away from "unprotected" contact with live creatures, altogether cook meat and eggs, and evade close contact with anybody with cold or influenza like side effects. Standard prescribe a fundamental hand cleanliness, for example, washing your hands with cleanser and water and respiratory cleanliness, for example, when you wheeze, sniffing into your elbow. Approaches to secure yourself against a potential creature source is stay away from superfluous unprotected contact with live creatures and to ensure that you wash your hands altogether in the wake of associating with animal.

Treatment

There are no antibodies or antiviral medications that are affirmed for avoidance or treatment and no particular medicines for crown infections, yet indications can be dealt with. The principle treatment is strong consideration, including ensuring the patient is getting enough oxygen, and utilizing a ventilator to drive air into the lungs if essential, Patients should rest and drink a lot of liquids "while the safe framework carries out its responsibilities and recuperates itself," she said. No medications have been affirmed for any crown infection sicknesses; however an antiviral medicine called remdesivir gives off an impression of being compelling in animals.

Novel Coronavirus (2019-Ncov)

On 31 December 2019, WHO was educated regarding a group of instances of pneumonia of obscure reason identified in Wuhan City, Hubei Province of China? Notwithstanding giving consideration to patients and separating new cases as they are distinguished, Chinese general wellbeing authorities have detailed that they stay concentrated on proceeded with contact following, directing ecological appraisals at the discount market, and examinations to recognize the pathogen causing the flare-up. WHO is intently observing this occasion and is in dynamic correspondence with partners in China. In accordance with standard conventions for any general wellbeing occasion, an occurrence the board framework has been enacted over the three degrees of WHO (nation office, provincial office and base camp) and the Organization is set up to mount a more extensive reaction, if necessary.

How to avoid corona virus

There is no vaccine for corona virus. To help prior steamy shower can also help ease a sore and scratchy throat. Even when a corona virus causes MERS or SARS in other countries, the kind of corona virus infection common in the U.S. is certifiably not a genuine risk for an in any case sound grown-up. On the off chance that you become ill, treat your manifestations and contact a specialist on the off chance that they deteriorate or don't leave.

Where did the infection originate from?

Since the infection previously sprung up in Wuhan in individuals who had visited nearby fish and creature showcase, authorities could just say it likely bounced from a creature to people. In another investigation, in any case, specialists sequenced the qualities of 2019-n Coronavirus (as the infection is presently called), and afterward they contrasted it and the hereditary groupings of in excess of 200 crown infections that contaminate different creatures around the globe. Their outcomes, point by point in the Journal of Medical Virology, recommended that 2019-n Coronavirus likely began in snakes.

How far has the virus spread?

The primary instances of the pneumonia-like infection were accounted for in Wuhan, China on Dec. 31, 2019. Washington State was affirmed to have the infection in the wake of coming back to the U.S. from Wuhan on Jan. 15, turning into the primary case in the U.S., authorities reported on Jan. 21).

Prevention

If travelling to Wuhan, you should avoid contact with sick people; avoid dead or alive animals, animal markets or products that come from animals such as uncooked meat, according to the CDC. You should often wash hands with soap and water for at least 20 seconds, they wrote. If you are infected by the virus you can take steps to help avoid transmitting it to others such as isolating yourself at home, separating yourself from other people in the house, wearing a face veil, covering your hacks and sniffles and washing your hands, as per the CDC.^[20-38]

CONCLUSION

Coronaviruses (CoVs) are a diverse family of viruses. Millions of people are at severe risk of acquiring several evolving viral infections through several factors. These viruses infect a variety of human and animal host cells and carry out their infection and replication. This article include sign, symptoms, diagnosis of respiratory syndrome and treatment. SARS-CoV and MERS-CoV can be transmitted directly to humans from dromedary camels needs further investigation. The challenge now is to incorporate advance techniques in the investigative efforts done to understand further the biology of Corona virus. Due to work and difficulty are developed vaccines that naturally cover yet have no effective medication that has resulted. There is no specific vaccine or treatment recommended for COVID19 infection. For severe cases treatment includes ribavirin, interferon alfa and lopinavir/ritonavir are given in combination. But, this is controlled by good personal hygiene, avoid contact with wild animals. Focus on the impact on global stock market. Global stock markets have fallen sharply as investors continue to worry about the broader economic effects of the coronavirus.

REFERENCES

1. Wang LF, Shi Z, Zhang S, Field H, Daszak P, Eaton BT. Review of bats and SARS. *Emerging infectious diseases*, Dec, 2006; 12(12): 1834.
2. Ge XY, Li JL, Yang XL, Chmura AA, Zhu G, Epstein JH, Mazet JK, Hu B, Zhang W, Peng C, Zhang YJ. Isolation and characterization of a bat SARS-like coronavirus that uses the ACE2 receptor. *Nature*, Nov, 2013; 503(7477): 535-8.
3. Chen Y, Guo D. Molecular mechanisms of coronavirus RNA capping and methylation. *Virologica Sinica*, Feb 1, 2016; 31(1): 3-11.
4. Cui J, Li F, Shi ZL. Origin and evolution of pathogenic coronaviruses. *Nature reviews Microbiology*, Mar, 2019; 17(3): 181 -92.

5. Cauchemez S, Van Kerkhove MD, Riley S, Donnelly CA, Fraser C, Ferguson NM. Transmission scenarios for Middle East Respiratory Syndrome Coronavirus (MERS-CoV) and how to tell them apart. *Euro surveillance: bulletin European sur les maladies transmissibles= European communicable disease bulletin*, 2013; 18(24).
6. Vander Hoek L. Human coronaviruses: what do they cause?. *Antiviral therapy*, 2007; 12(4 Pt B): 651.
7. Pene F, Merlat A, Vabret A, Rozenberg F, Buzyn A, Dreyfus F, Cariou A, Freymuth F, Lebon P. Coronavirus 229 E-related pneumonia in immunocompromised patients. *Clinical infectious diseases*, Oct 1, 2003; 37(7): 929-32.
8. Walsh EE, Shin JH, Falsey AR. Clinical impact of human coronaviruses 229E and OC43 infection in diverse adult populations. *The Journal of infectious diseases*, Nov 15, 2013; 208(10): 1634-42.
9. Al-Osail AM, Al-Wazzah MJ. The history and epidemiology of Middle East respiratory Syndrome corona virus. *ultidisciplinary respiratory medicine*, 2017 Dec 1; 12(1): 20.
10. Law PT, Wong CH, Au TC, Chuck CP, Kong SK, Chan PK, To KF, Lo AW, Chan JY, Suen YK, Chan HE. The 3a protein of severe acute respiratory syndrome-associated coronavirus induces apoptosis in Vero E6 cells. *Journal of general virology*, 2005, Jul 1; 86(7): 1921 -30.
11. Armstrong J, Niemann H, Smeekens S, Rottier P, Warren G. Sequence and topology of a model intracellular membrane protein, E1 glycoprotein, from a coronavirus. *Nature*, 1984 Apr 19; 308(5961): 751 -2.
12. Nal B, Chan C, Kien F, Siu L, Tse J, Chu K, Kam J, Staropoli I, Crescenzo-Chaigne B, Escriou N, vander Werf S. Differential maturation and subcellular localization of severe acute respiratory syndrome coronavirus surface proteins S, M and E. *Journal of general virology*, 2005 May 1; 86(5): 1423-34.
13. Godet M, L'Haridon R, Vautherot JF, Laude H. TGEV corona virus ORF4 encodes a membrane protein that is incorporated into virions. *Virology*, 1992 Jun 1; 188(2): 666-75.
14. Nieto-Torres JL, DeDiego ML, Verdia-Baguena C, Jimenez-Guardeno JM, Regla-Nava JA, Fernandez Delgado R, Castano-Rodriguez C, Alcaraz A, Torres J, Aguilella VM, Enjuanes L. Severe acute respiratory syndrome coronavirus envelope protein ion channel activity promotes virus fitness and pathogenesis. *PLoS pathogens*, 2014 May; 10(5).
15. Chang CK, Sue SC, Yu TH, Hsieh CM, Tsai CK, Chiang YC, Lee SJ, Hsiao HH, Wu WJ, Chang WL, Lin CH. Modular organization of SARS coronavirus nucleocapsid protein. *Journal of biomedical science*, 2006 Jan 1; 13(1): 59-72.
16. Hurst KR, Koetzner CA, Masters PS. Identification of in vivo-interacting domains of the murine coronavirus nucleocapsid protein. *Journal of virology*, 2009 Jul 15; 83(14): 7221 -34.
17. Molenkamp R, Spaan WJ. Identification of a specific interaction between the coronavirus mouse hepatitis virus A59 nucleocapsid protein and packaging signal. *Virology*, 1997 Dec 8; 239(1): 78-86.
18. Kuo L, Masters PS. Functional analysis of the murine coronavirus genomic RNA packaging signal. *Journal of virology*, 2013 May 1; 87(9): 5182-92.
19. Klausegger A, Strobl B, Regl G, Kaser A, Luytjes W, Vlasak R. Identification of a coronavirus hemagglutinin-esterase with a substrate specificity different from those of influenza C virus and bovine coronavirus. *Journal of virology*, 1999 May 1; 73(5): 3737-43.
20. Fehr AR, Perlman S. Coronaviruses: an overview of their replication and pathogenesis, *Methods in Molecular Biology*, 2015; 1282: 1-23. Doi:10.1007/978-1-4939-2438-7_1. ISBN 978-1-4939-2437-0. PMC 4369385. PMID 25720466.
21. 2019 Novel Coronavirus infection (Wuhan, China): Outbreak update, Canada.ca.
22. <https://edition.cnn.com/2020/01/22/asia/china-wuhan-coronavirus-deadly-intlhnk/index.html>
23. Laboratory testing of human suspected cases of novel coronavirus (nCoV) infection, *Interim guidance, World Health Organization*, 2020.
24. Novel Coronavirus (nCoV-2019), *Wuhan, China*, 2019.
25. Pneumonia of unknown cause - China, *World Health Organization*, Retrieved 2020.
26. https://www.cdc.gov/coronavirus/2019ncov/index.html?CDC_AA_refVal=https%3A%2F%2Fwww.cdc.gov%2Fcoronavirus%2Fnovel-coronavirus-2019.html
27. Van Der Hoek L, Pyrc K, Jebbink M F, Vermeulen-Oost W, Berkhout R J, Wolthers K C, Wertheim-Van Dillen P M, Kaandorp J, Spaargaren J, Berkhout B. Identification of a new human coronavirus, *Nature Medicine*, 2004; 10(4): 368-373.
28. WHO Statement Regarding Cluster of Pneumonia Cases in Wuhan, China, www.who.int. Retrieved, 2020.
29. Doucleef M. Scientists Go Deep On Genes of SARS-Like Virus, *Associated Press*, Retrieved, 2012.
30. Falco M. New SARS-like virus poses medical mystery, *CNN Health*, Retrieved, 2013.
31. New SARS-like virus found in Middle East, *Al-Jazeera*, Retrieved, 2013.
32. <https://www.medicalnewstoday.com/articles/256521.php#sars>
33. <https://en.wikipedia.org/wiki/Coronavirus>
34. <https://www.healthline.com/healthnews/what-to-know-about-the-mysterious-coronavirus-detected-in-china>.
35. Coronavirus disease (COVID-19) outbreak, *World Health Organization*, 2019. <https://www.who.int/westernpacific/emergencies/novel-coronavirus>

36. <https://www.webmd.com/lung/coronavirus#1>
37. Yvonne Xinyi Lim, Yan Ling Ng, James P.Tam, and Ding Xiang Liu. Human Coronaviruses: A Review of Virus–Host Interactions, *Diseases*, 2016; 4(3): 26. <https://www.ncbi.nlm.nih.gov/pmc/articles/PMC5456285/>
38. <https://www.cdc.gov/coronavirus/2019-ncov/about/index.html>