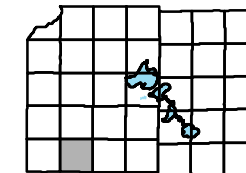
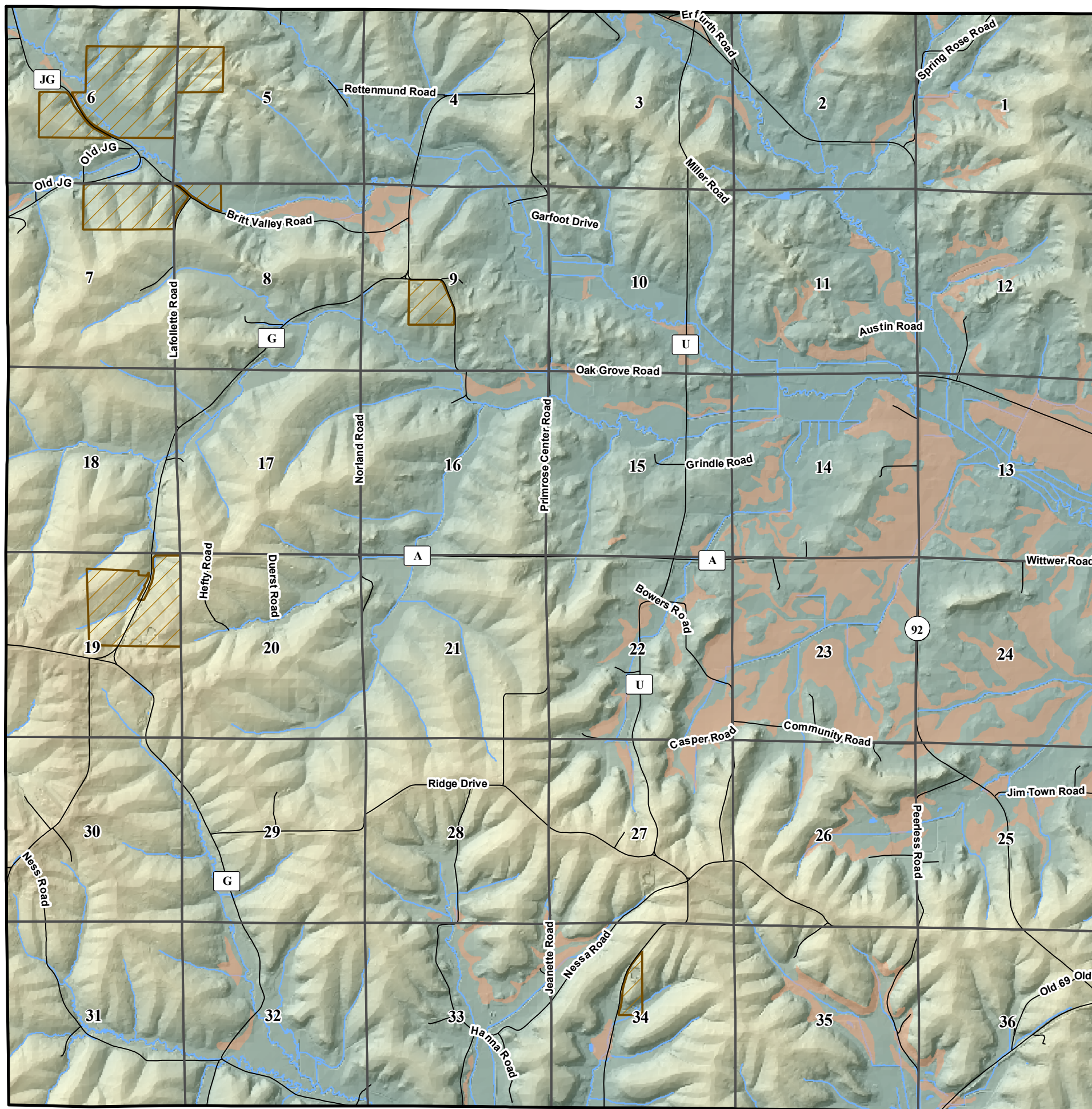


# Town of Primrose








MAP 5-4

## Mineral Extraction



### Mineral Extraction Sites (2004)

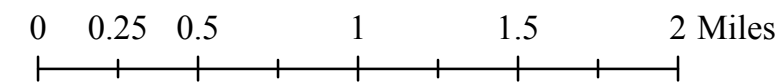
-  Non-Conforming Site
-  Active, Permitted Site (CUP)
-  High Potential
-  Low Potential
-  Soils Likely to Have High Sand or Gravel Content

**DRAFT**

Non-Conforming - Mineral extraction operations which existed prior to 1969 and were registered with and approved by the Dane County Zoning Administrator shall be considered non-conforming uses.

For information on mineral extraction sites contact the Dane County Zoning Department at 608.266.4266, 608.266.9083 or zoning inspector Dan Everson at 608.267.1541.

Nov., 2008



Source Info:  
 Mineral Extraction Sites: 2005, (DC Zoning)  
 Soils: 2005, (NRCS)  
 Quality Sand & Gravel: UW-Geology & Payne and Dolan

This map was prepared through the Dane County Department of Planning and Development in conjunction with the Dane County Land & Water Resources Department, Dane County Land Information Office and the Dane County Community Analysis & Planning Division.