

HOLDINGFORD, MN

# SAFE ROUTES to SCHOOL

*A plan to make walking  
and biking to school a  
safe, fun activity*



The built environment plays an important role in the way people experience and navigate their communities. Sidewalks, crosswalks, bike parking, and more can all help create a safe and inviting environment for students and families to walk, bike, and roll to school and other destinations in the City of Holdingford.

## EXISTING INFRASTRUCTURE



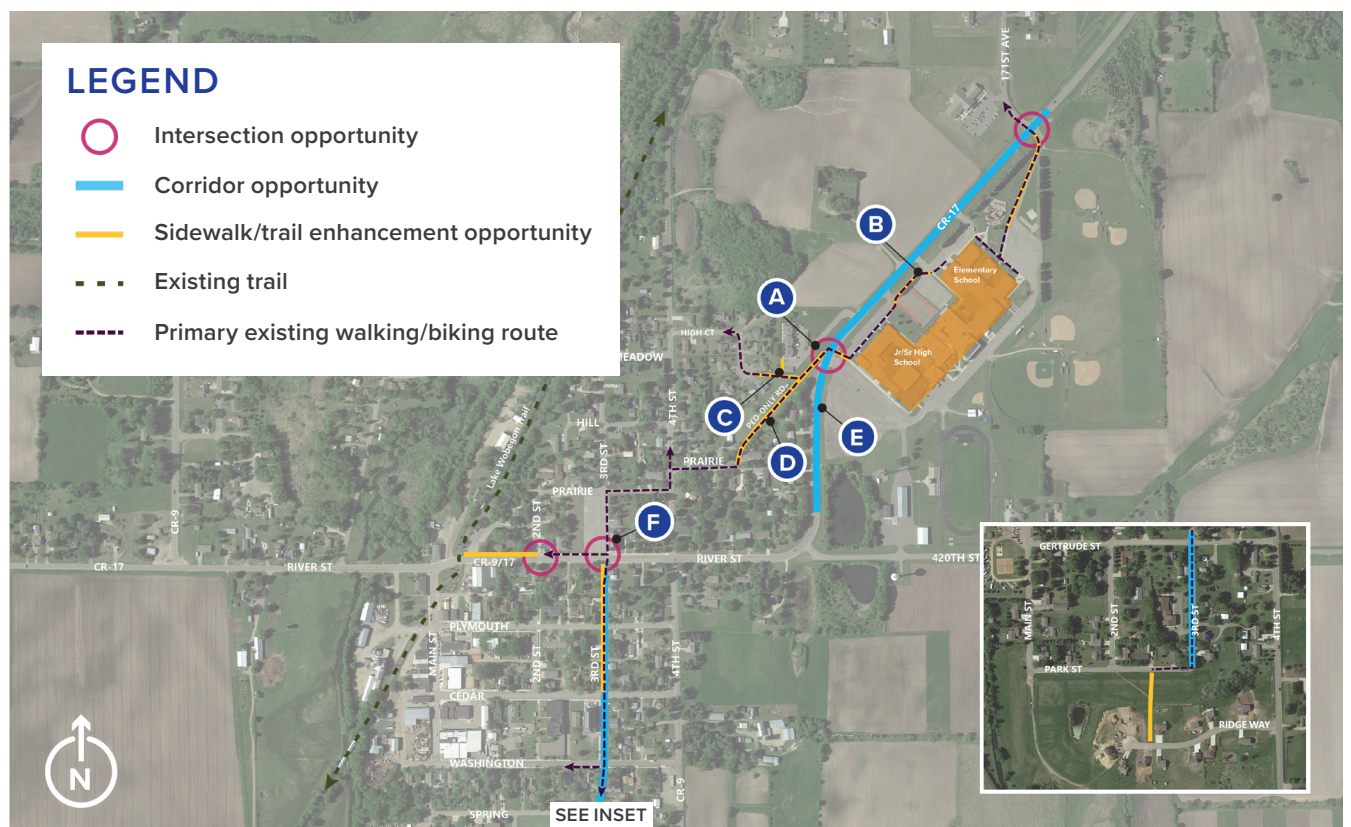
Left to right, from top left: students crossing County Road 17 during dismissal; southeast landing at the crossing of County Road 9/River Street at 3rd Street; portion of Lake Wobegon Trail just south of County Road 9 in downtown Holdingford; the informal connection between the Elementary and Junior/Senior High Schools, in the grass along the tennis courts; segment of the pedestrian-only street that connects to County Road 17 and provides access to students walking.

## INFRASTRUCTURE RECOMMENDATIONS

### HIGH PRIORITY RECOMMENDATIONS

These locations are identified as high priorities for infrastructure improvement:

- A** Long crossing, high vehicle speeds and volumes. Install crossing improvements, shift parking.
- B** No formal or direct connection between schools. Install sidewalk or path connection as shown.
- C** No formal connection to nearby residences. Formalize existing route.
- D** Poor pavement quality, no school signage. Re-surface and formalize pedestrian-only road.
- E** Existing design encourages speeding. Install traffic calming and school crossing and speed signs.
- F** Uncomfortable crossing for people walking and biking. Install curb extensions, flashing beacon.



### GET INVOLVED

Plan your walking or biking route with your family and friends, watch for students and respect speed limits when driving near schools, and show your support by volunteering! Contact your school principal to see the full plan and learn how to get involved.

Learn more about Safe Routes to School in Minnesota at: [mnsaferoutestoschool.org](http://mnsaferoutestoschool.org)

### CONTACT

**Chris Swenson, Superintendent**  
Holdingford Public Schools  
[chris.swenson@isd738.org](mailto:chris.swenson@isd738.org)  
320.746.4308

