

# OAK GROVE PARK

## ZONING REGULATIONS & DESIGN STANDARDS

Town of Medway, MA

COMMUNITY FORUM

Oak Grove Zoning Task Force

June 10, 2019

### Consulting Team:

- Brovitz Community Planning & Design
- Dodson & Flinker



### Oak Grove Zoning Community Forum

Monday, June 10, 2019 @ 7 PM  
(Refreshments & socializing at 6:30 pm)

Thayer Homestead  
2B Oak Street – Medway  
Please, no parking on Oak Street.

- Presentation by Ted Brovitz, the Town's Oak Grove zoning consultant about proposed zoning for the redevelopment of the Oak Grove Urban Renewal area (Bottle Cap Lots)
- Questions & Answers

The draft Oak Grove Zoning Bylaw is available for review at  
<https://www.townofmedway.org/oak-grove-zoning-task-force-ogztf>

If you are not able to attend the Forum but have questions about the project or the draft zoning, please contact the Medway Community and Economic Development office at 508-321-4915.

The Oak Grove Zoning Community Forum is sponsored by:  
Oak Grove Zoning Task Force  
Medway Redevelopment Authority

# PROJECT SCOPE AND SCHEDULE

## Phase 1: Project Area Evaluation

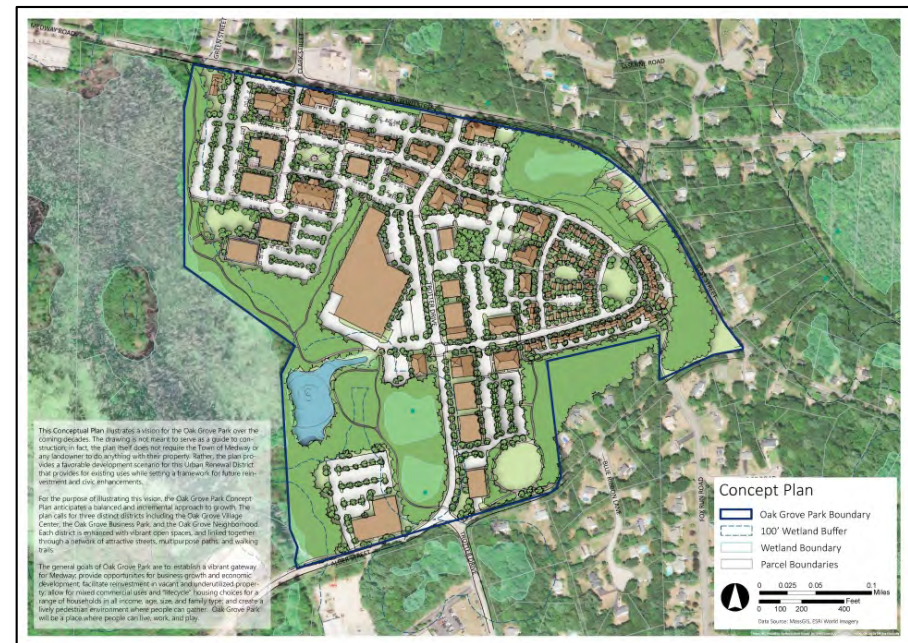
- Completed in June 2018

## Phase 2: Visioning

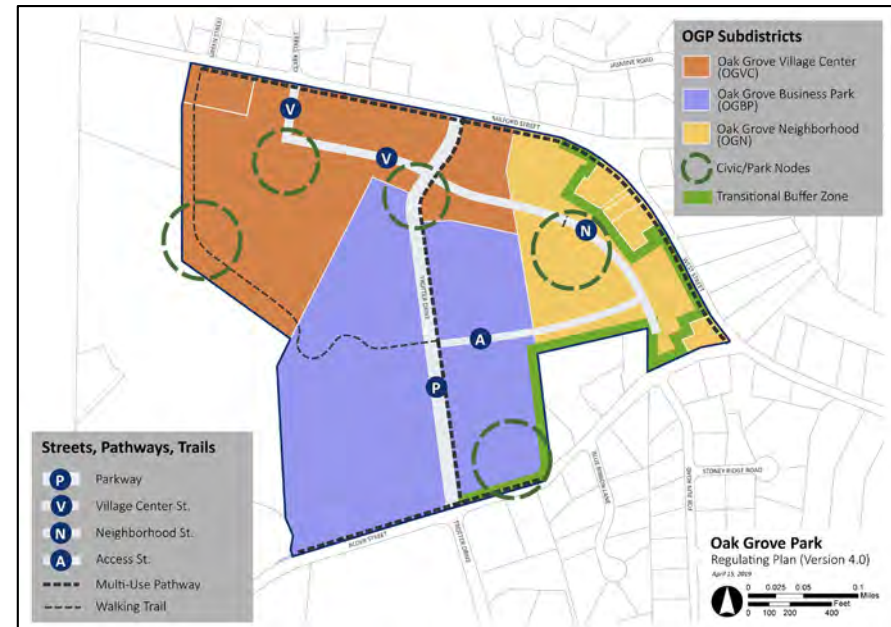
- Completed in August 2018

## Phase 3: Prepare Zoning and Design Standards

- Drafted in Fall 2018 – Spring 2019



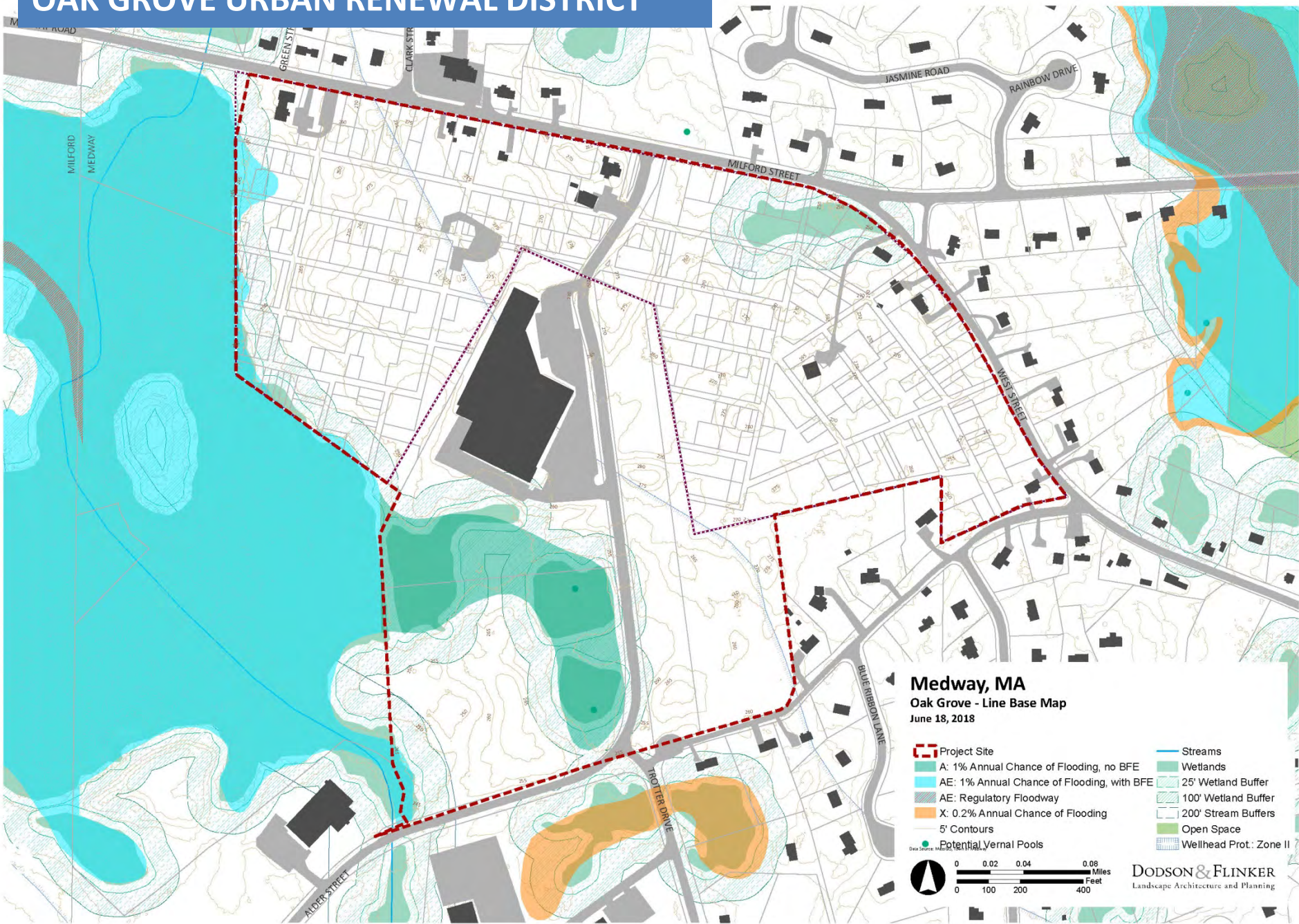
Concept Plan



Zoning Plan

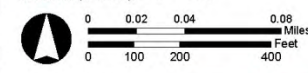


# OAK GROVE URBAN RENEWAL DISTRICT



**Medway, MA**  
**Oak Grove - Line Base Map**  
 June 18, 2018

- Project Site
- A: 1% Annual Chance of Flooding, no BFE
- AE: 1% Annual Chance of Flooding, with BFE
- AE: Regulatory Floodway
- X: 0.2% Annual Chance of Flooding
- 5' Contours
- Potential Vernal Pools
- Wetlands
- 25' Wetland Buffer
- 100' Wetland Buffer
- 200' Stream Buffers
- Open Space
- Wellhead Prot: Zone II
- Streams



**DODSON & FLINKER**  
 Landscape Architecture and Planning



# OAK GROVE URBAN RENEWAL CONCEPTUAL DEVELOPMENT PLAN



## OAK GROVE URBAN RENEWAL PLAN (URP) PROJECTED DEVELOPMENT

### Total Development By Type

Proposed Use	Square Footage	# of Parking Spaces	Lot Size (Acres)
Commercial/Restaurant	12,000	40	2.04
Commercial/Hotel	60,000	250	3.24
Commercial Office and/or Retail	207,000	647	6.41
Commercial/Day Care	20,000	66	2.31
Flex Space/Office/Retail	97,000	370	8.3
Research and Development	36,000	135	3.55
Industrial	35,000	120	11.7
Multi-family Residential <sup>1</sup>	110 DU	240	9.63
<b>Total</b>	<b>467,000</b>	<b>1,868</b>	<b>47.18</b>

1. Multi-family Residential is expressed in terms of Dwelling Units (DU) rather than square footage.

# OAK GROVE PARK PLAN

## Phase 2: Visioning Process

- **Stakeholder Meetings & Public Workshop**
- **Task Force Workshop**
- **Concept Master Plan**
- **Zoning Outline**
- **Community Forum**

## Advantages/Objectives of Visioning

- **Building Consensus on New Zoning Plan**
- **Marketing to Potential Investors**
- **Seeking Grants & Other Funding Resources**

## Vision for the Oak Grove Area from the URP

- **Implement the Vision** for Redevelopment in the OGA URP
- Create a **strong gateway** for Medway with a positive identity and image.
- Sustain Medway's high **quality of life**.
- Facilitate a **broad mix of uses**: Housing; Business; Industry; and Open Space.
- Provide quality **employment opportunities**.
- Provide sustainable **business development opportunities**.
- Facilitate **entrepreneurship**.
- Increase in Medway's **tax base**.
- **Leverage area attributes** such as access to I-495 and regional highway network, MBTA commuter rail, local and regional workforce.
- **Minimize impacts** (environmental and social).
- **Expand housing choice** and opportunity for local residents





## TASK FORCE VISIONING & SCENARIO BUILDING EXERCISES

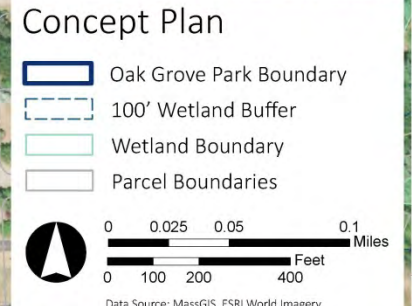


# OAK GROVE OVERALL CONCEPTUAL DEVELOPMENT PLAN

This Conceptual Plan illustrates a vision for the Oak Grove Park over the coming decades. The drawing is not meant to serve as a guide to construction; in fact, the plan itself does not require the Town of Medway or any landowner to do anything with their property. Rather, the plan provides a favorable development scenario for this Urban Renewal District that provides for existing uses while setting a framework for future reinvestment and civic enhancements.

For the purpose of illustrating this vision, the Oak Grove Park Concept Plan anticipates a balanced and incremental approach to growth. The plan calls for three distinct districts including the Oak Grove Village Center, the Oak Grove Business Park, and the Oak Grove Neighborhood. Each district is enhanced with vibrant open spaces, and linked together through a network of attractive streets, multipurpose paths, and walking trails.

The general goals of Oak Grove Park are to: establish a vibrant gateway for Medway; provide opportunities for business growth and economic development; facilitate reinvestment in vacant and underutilized property; allow for mixed commercial uses and "lifecycle" housing choices for a range of households in all income, age, size, and family type; and create a lively pedestrian environment where people can gather. Oak Grove Park will be a place where people can live, work, and play.





# OAK GROVE OVERALL CONCEPTUAL PLAN DEVELOPMENT PLAN

## OGP Subdistricts

- Oak Grove Village Center (OGVC)
- Oak Grove Business Park (OGBP)
- Oak Grove Neighborhood (OGN)
- Civic/Park Nodes
- Transitional Buffer Zone

This Conceptual Plan illustrates a vision for the Oak Grove Park over the coming decades. The drawing is not meant to serve as a guide to construction; in fact, the plan itself does not require the Town of Medway or any landowner to do anything with their property. Rather, the plan provides a favorable development scenario for this Urban Renewal District that provides for existing uses while setting a framework for future reinvestment and civic enhancements.

For the purpose of illustrating this vision, the Oak Grove Park Concept Plan anticipates a balanced and incremental approach to growth. The plan calls for three distinct districts including the Oak Grove Village Center, the Oak Grove Business Park, and the Oak Grove Neighborhood. Each district is enhanced with vibrant open spaces, and linked together through a network of attractive streets, multipurpose paths, and walking trails.

The general goals of Oak Grove Park are to: establish a vibrant gateway for Medway; provide opportunities for business growth and economic development; facilitate reinvestment in vacant and underutilized property; allow for mixed commercial uses and "lifecycle" housing choices for a range of households in all income, age, size, and family type; and create a lively pedestrian environment where people can gather. Oak Grove Park will be a place where people can live, work, and play.

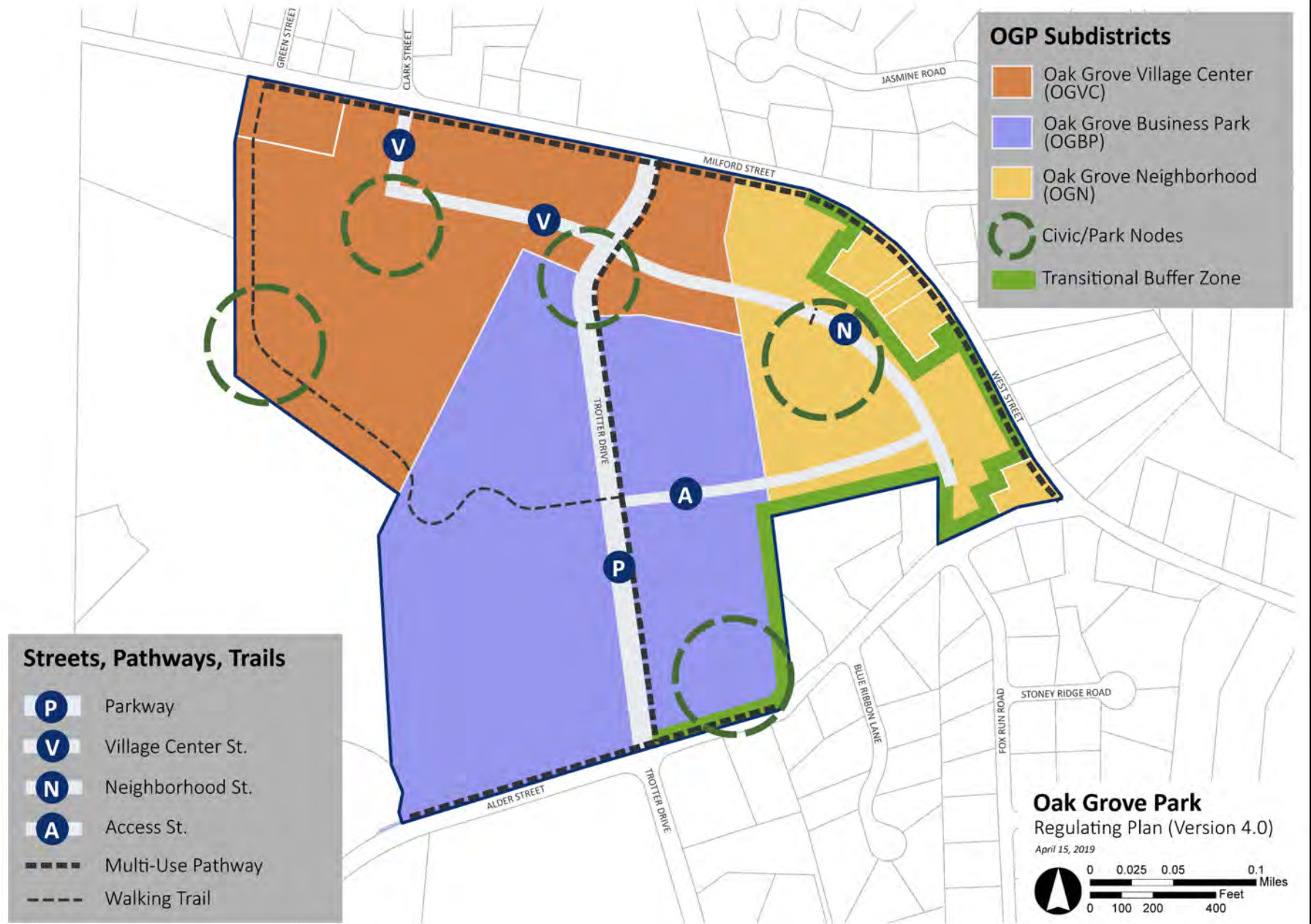
## Concept Plan

- Oak Grove Park Boundary
- 100' Wetland Buffer
- Wetland Boundary
- Parcel Boundaries





# ZONING MAP & REGULATING PLAN





# OAK GROVE CONCEPT PLAN AND ZONING MAP

## Oak Grove Village Center (OGVC)





## EXAMPLE VILLAGE CENTER DEVELOPMENT



**SOUTH COUNTY COMMONS (SOUTH KINGSTOWN, RI)**



## EXAMPLE VILLAGE CENTER DEVELOPMENT

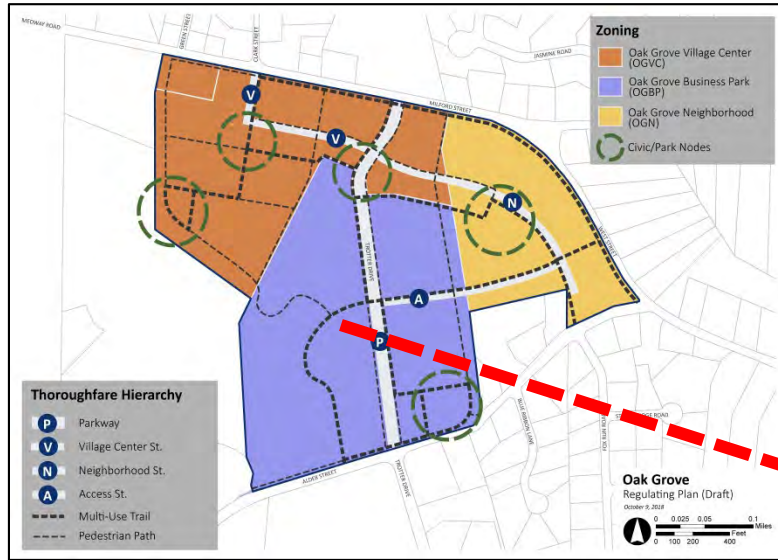


**WAYLAND TOWN CENTER**



# OAK GROVE CONCEPT PLAN AND ZONING MAP

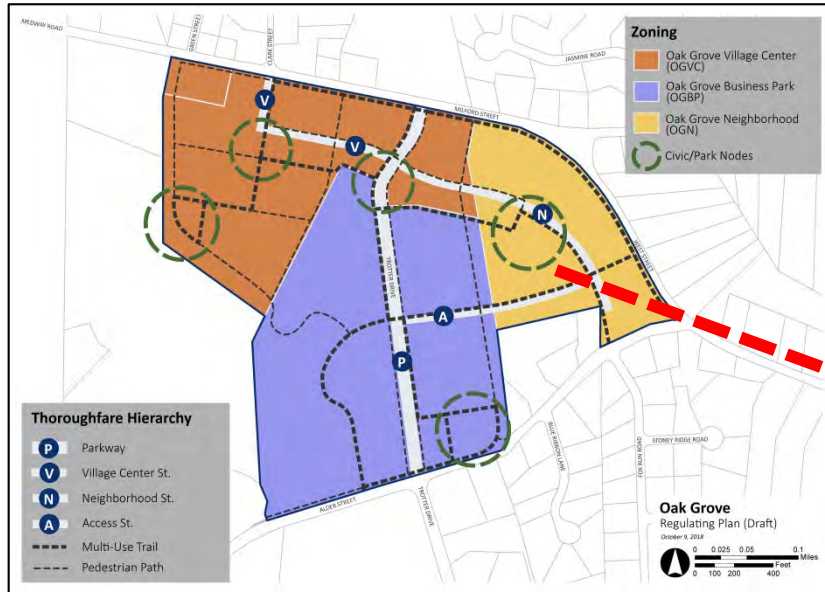
## Oak Grove Business Park (OGBP)





# OAK GROVE OVERALL CONCEPTUAL PLAN DEVELOPMENT PLAN

## Oak Grove Neighborhood (OGN)





## EXAMPLE NEIGHBORHOOD DEVELOPMENT



**RED MILL VILLAGE, NORTON, MA**



# EXAMPLE NEIGHBORHOOD DEVELOPMENT



**VILLAGE HILL, NORTHAMPTON MA**



## EXAMPLE NEIGHBORHOOD DEVELOPMENT



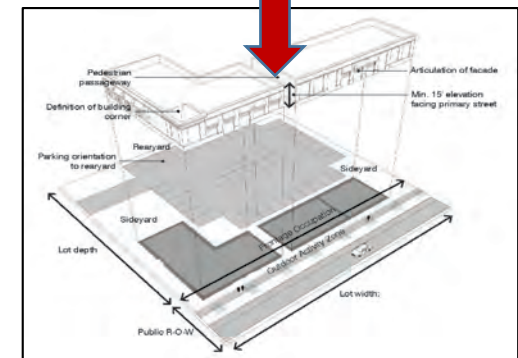
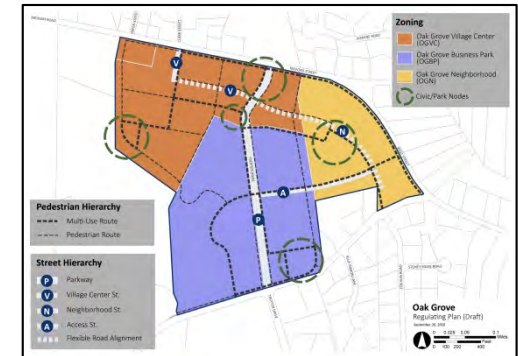
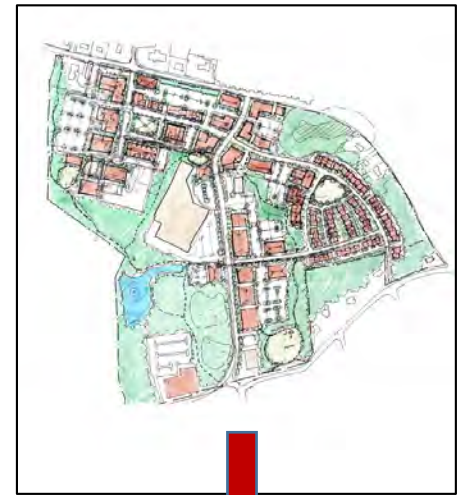
**RIVERWALK COTTAGE COURT, W. CONCORD, MA**



# OAK GROVE PARK REZONING PROCESS

## From Vision to Form-Based Zoning

- General Provisions: Definitions and Goals
- Zoning Map/Reg. Plan: Streets, Lots, Open Spaces, Frontage Zones, and Buffers.
- Uses: Residential, Commercial, Industrial, Mixed Use, and Civic.
- Building Forms: Types, Placement, Design.
- Public Realm: Complete Streets, Attractive Streetscapes, and Active Open Spaces
- Site Planning: Parking, Landscaping, Stormwater Design and Development Standards
- Integration: Clear and User- Friendly





# OAK GROVE PARK ZONING OUTLINE

## Form-Based Zoning



### Site Standards

- Parking Placement
- Ped/Veh. Access
- Landscaping
- Lighting/Screening
- Utilities
- Signage
- LID/Sustainability Stds



### Building Standards

- Bldg. Placement
- Building Types
- Building Uses
- Bldg. Frontage Types
- Building Components
- Bldg. Height/Stepbacks
- Building Design Stds

Building Frontage Type



### Street Standards

- Complete Street Hierarchy
- Streetscape Treatment
- Sidewalk Use/Activation
- On-Street Parking/Parklets
- Intermodal Facilities
- Utilities
- LID/Sustainability Stds

### Open Space & Rec Types

- Parks, Playgrounds, Commons

### Outdoor Amenity Spaces

- Yards
- Dining Terrace
- Green Roofs
- Courtyards
- Comm. Gardens
- Plazas
- Forecourts

**PRIVATE REALM**

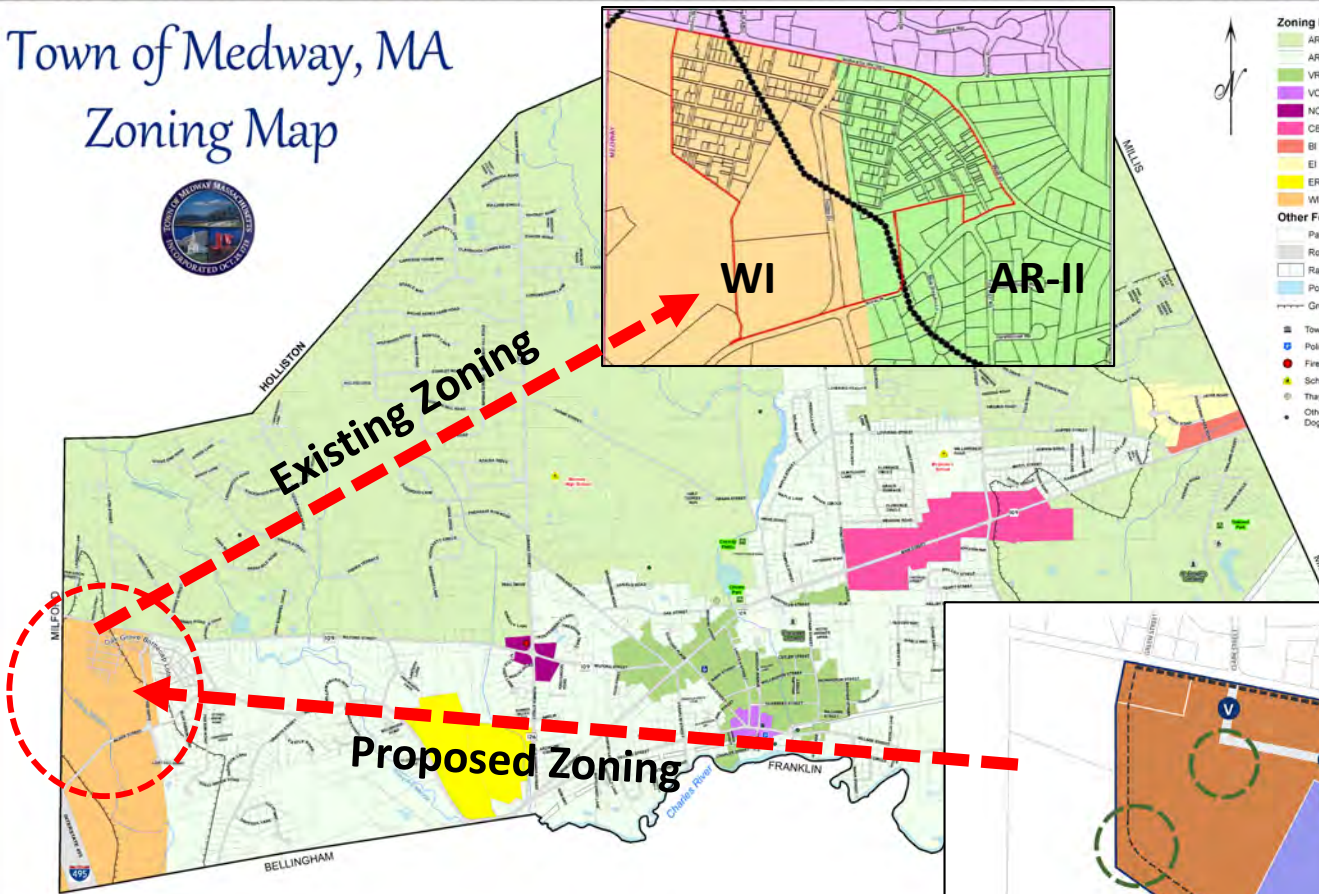
**PUBLIC REALM**

**POPS**



# SECTION 4 – ADD OAK GROVE PARK ZONING DISTRICTS

## Town of Medway, MA Zoning Map



Planning & Economic Development Board Members:  
Andy Robinson, Bill Tucker, Tom Gay, Matt Hayes, Rich Oliver

- Zoning District**
- AR-I Agricultural Residential I
  - AR-II Agricultural Residential II
  - VR Village Residential
  - VC Village Commercial
  - NC Neighborhood Commercial
  - CB Central Business
  - BI Business Industrial
  - EI East Industrial
  - ER Energy Resource
  - WI West Industrial
- Other Features**
- Parcel Boundaries
  - Roads (Public & Private)
  - Rail ROW
  - Ponds, Rivers
  - Groundwater Protection District
  - Town Hall
  - Public Library
  - Police Station
  - Senior Center
  - Fire Stations
  - Parks, Fields
  - Schools
  - Cemeteries
  - Thayer House
  - Other Parks, Trails, Memorials, Dog Park, Picnic Areas

### DIMENSIONAL REGULATIONS

Zoning District	Minimum Lot Size (sq. ft.)	Minimum Frontage (ft.)	Minimum Setbacks (ft.) <sup>c</sup> Front, Side, Rear
AR-I	44,000	180	35, 15, 15
AR-II	22,500	150	35, 15, 15
VR	22,500	150	20', 10', 10'
CB	30,000 <sup>a,b</sup>	NA	10, 10/25', 25
VC	10,000	NA	20', 10', 10'
NC	20,000	NA	35, 15, 15
BI	20,000	75	25, 15, 15
EI	20,000	100	30, 20, 30
ER	20,000	150	30, 20, 30
WI	40,000	100	30, 20, 30

Be advised that not all Dimensional and Density Regulations are included in the table above. Please refer to the Medway Zoning Bylaw, Section 6.1 Dimensional and Density Regulations.

### ADAPTIVE USE OVERLAY DISTRICT (AUOD)

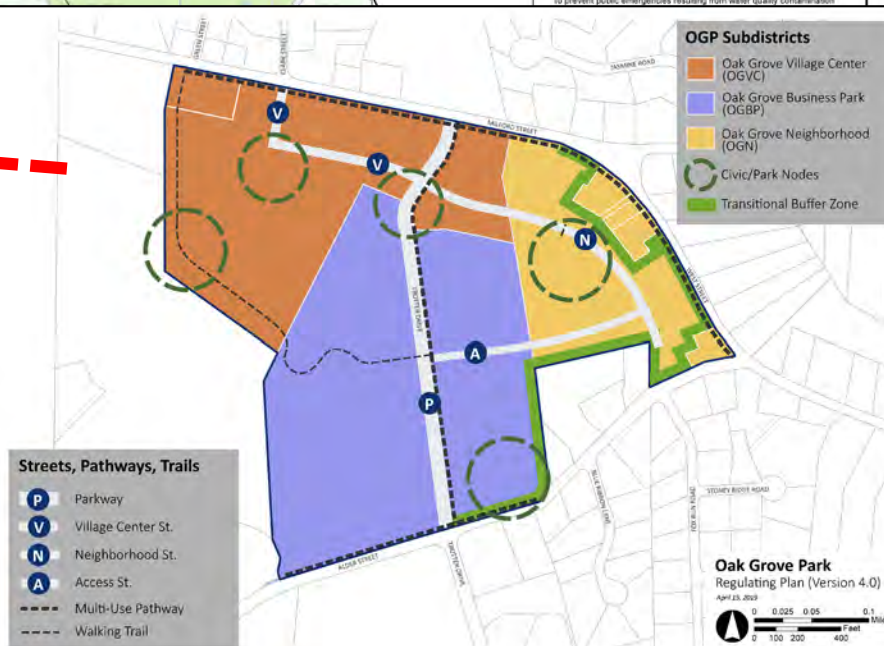
To promote economic development and to preserve community character by encouraging conversion of existing residential buildings in certain older neighborhoods to limited business and mixed uses. Special permit use.

### MULTIFAMILY HOUSING OVERLAY DISTRICT (MHOD)

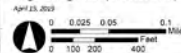
To encourage the provision of a diversity of housing types, to promote pedestrian oriented developments, and to increase the number of affordable housing units in a designated area by authorizing multifamily dwelling units and developments in a designated area. Special permit use.

### FLOOD PLAIN DISTRICT

To prevent public emergencies resulting from water quality contamination



**Oak Grove Park  
Regulating Plan (Version 4.0)**  
April 23, 2023





# OAK GROVE ZONING OUTLINE

## SECTION 5. USE REGULATIONS

### AMEND:

#### Table 1 - Schedule of Uses

- ✓ Oak Grove Village Center
- ✓ Oak Grove Business Park
- ✓ Oak Grove Neighborhood

## TABLE OF USES – November 29, 2018 Medway Zoning Bylaw

PROPOSED AMENDMENT IN BLUE - VERSION 5.0 04.16.19

TABLE 1: SCHEDULE OF USES

	FORM-BASED DISTRICTS		
	OGVC	OGBP	OGN
<b>A. AGRICULTURAL, CONSERVATION, RECREATION USES</b>			
Agriculture, excluding piggeries and fur farms on less than 5 acres of land, and excluding livestock on less than 44,000 sq. ft. of land.	N	N	Y
Poultry on less than 1 acre. Minimum lot size for poultry is 5,000 sq. ft. subject to Board of Health regulations.	N	N	Y
Commercial Greenhouse	N	PB	N
Recreational facility	Y	Y	PB
Livery riding stable	N	PB	PB
<b>B. PUBLIC SERVICE</b>			
Municipal use	Y	Y	Y
<b>C. RESIDENTIAL USES</b>			
Detached single-family house (Amended 5-7-17)	N	N	Y <sup>1</sup>
Assisted living residence facility	PB	N	N
Multifamily dwellings and multifamily developments subject to Section 5.6.2 E and Section 5.6.4 (Added 11/16/15) <b>and Section 9.0</b>	Y <sup>2</sup>	N	Y
Multifamily units in combination with a commercial use that is permitted or allowed by special permit, subject to Section 5.4.1. <b>and Section 9.0</b>	Y	N	N
Long-term care facility	PB	N	PB
<b>C. RESIDENTIAL USES</b>			
<b>Accessory Uses</b>			
Home-based business, subject to Section 8.3	Y	N	Y
Greenhouse	Y	N	Y



# OAK GROVE ZONING OUTLINE

## SECTION 5. USE REGULATIONS

### AMEND:

#### Table 1 - Schedule of Uses

- ✓ Oak Grove Village Center
- ✓ Oak Grove Business Park
- ✓ Oak Grove Neighborhood

TABLE 1: SCHEDULE OF USES			
	FORM-BASED DISTRICTS		
	OGVC	OGBP	OGN
<b>D. BUSINESS USES</b>			
<b>Retail Trade</b>			
Retail bakery <i>(Added 11/16/15)</i>	Y	Y	N
Retail sales	Y	Y	N
Retail store larger than 20,000 sq. ft.	PB	PB	N
Retail sales, outdoors	N	PB	N
Shopping center/multi-tenant development	PB	PB	N
Auto parts	N	N	N
Florist	Y	Y	N
Indoor sales of motor vehicles, trailers, boats, farm equipment	N	PB	N
<b>Hospitality and Food Services</b>			
Restaurant providing food within a building	Y	Y	N
Restaurant providing live entertainment	Y	Y	N
Brew pub	Y	Y	N
Bed and breakfast	Y	N	PB
Inn	Y	N	N
<b>Cultural and Entertainment Uses</b>			
Studio	Y	Y	N
Museum	Y	PB	N
Movie theatre/cinema	Y	PB	N
Theatre	Y	PB	N
Gallery	Y	PB	N
Commercial indoor amusement	Y	Y	N
<b>Professional Uses and Financial Services</b>			
Financial institution	Y	Y	N
Professional or business office	Y	Y	N
<b>Services</b>			
Personal care service establishments	Y	Y	N
Service establishment <i>(amended 11-13-17)</i>	Y	Y	N
Doggie day care	N	Y	N
Repair shop	Y	Y	N
Furniture Repair	N	Y	N
Educational/instructional facility, commercial	Y	PB	N
Funeral home	N	N	N
Veterinary hospital	N	PB	N
Kennel	N	PB	N
Medical office or clinic	Y	Y	N
Adult day care facility, subject to Section 8.5	N	N	N
<b>Automotive Uses</b>			
Car wash	N	PB	N
Vehicle fuel station with convenience store	PB	N	N
Vehicle repair	N	Y	N
Auto body shop	N	Y	N
<b>Accessory Uses</b>			
Outdoor display	Y	Y	N
Outdoor storage of materials and parking of vehicles	N	PB	N



# OAK GROVE ZONING OUTLINE

## SECTION 5. USE REGULATIONS

### AMEND:

#### Table 1 - Schedule of Uses

- ✓ Oak Grove Village Center
- ✓ Oak Grove Business Park
- ✓ Oak Grove Neighborhood

**TABLE 1: SCHEDULE OF USES**

	FORM-BASED DISTRICTS		
	OGVC	OGBP	OGN
<b>E. INDUSTRIAL AND RELATED USES</b>			
Warehouse/distribution facility	N	PB	N
Wholesale bakery <i>(Added 11/16/15)</i>	N	Y	N
Wholesale showroom or office, including warehouse	N	Y	N
Manufacturing <i>(Amended 5/8/17)</i>	N	Y	N
Light Manufacturing <i>(Added 5-8-17)</i>	N	Y	N
Contractor's yard	N	PB	N
Research and development	N	Y	N
Brewery	N	Y	N
Research and development and/or manufacturing of renewable or alternative energy products	N	Y	N
<b>Accessory Uses</b>			
Outdoor storage of materials and parking of vehicles and equipment associated with a business operated in a building on the premises	N	PB	N
<b>F. INSTITUTIONAL USES</b>			
Community center	Y	PB	PB
Lodge or club	Y	Y	N



# SECTION 9 - OAK GROVE PARK ZONING DISTRICTS

## 9.1. PURPOSE & APPLICABILITY

### A. Purpose

### B. Designated Districts

1. Oak Grove Village Center (OGVC)
2. Oak Grove Business Park (OGBP)
3. Oak Grove Neighborhood (OGN)

## 9.2. REGULATING PLAN

### A. Civic and Park Nodes.

### B. Streets, Pathways, and Trails.

### C. Transitional Buffer Zones.

### D. Pedestrian Frontage Zones.

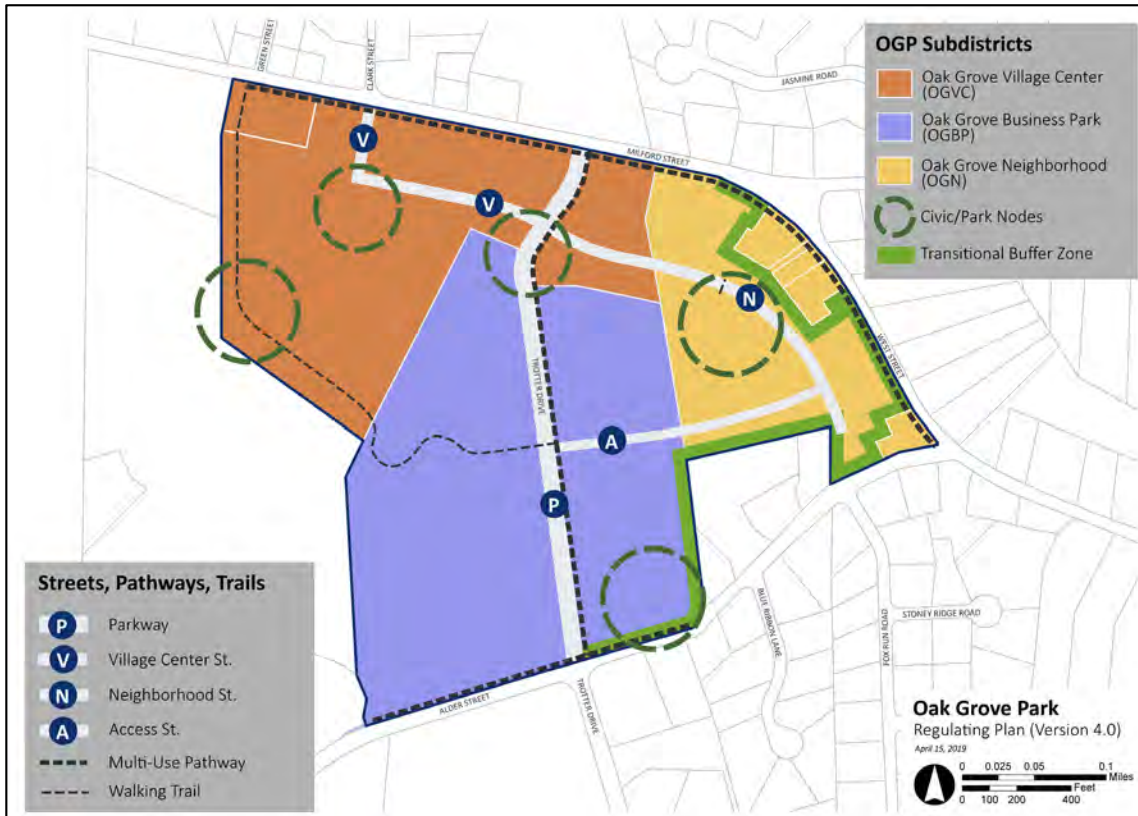
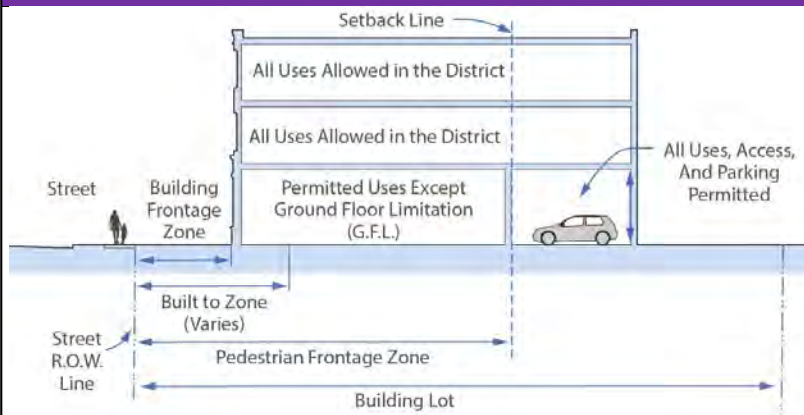


DIAGRAM 9.2.A.2. - PEDESTRIAN FRONTAGE ZONES





# SECTION 9 - OAK GROVE PARK ZONING DISTRICTS

## 9.3. GENERAL STANDARDS FOR ALL BUILDINGS AND LOTS

### A. Building Placement and Orientation

### B. Building Height

### C. Building Proportions and Façade Composition

### D. Roof Types and Design

### E. Exterior Treatments

DIAGRAM 9.3.A.3 - BUILDING PLACEMENT ON THE LOT

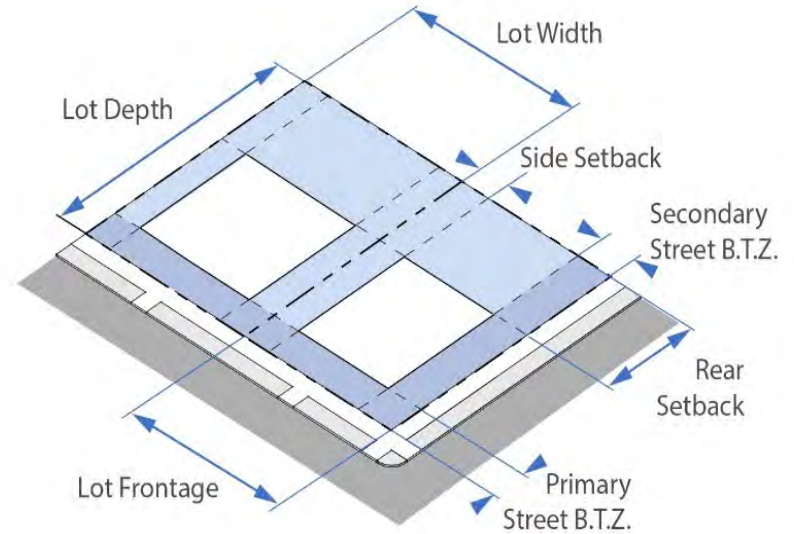
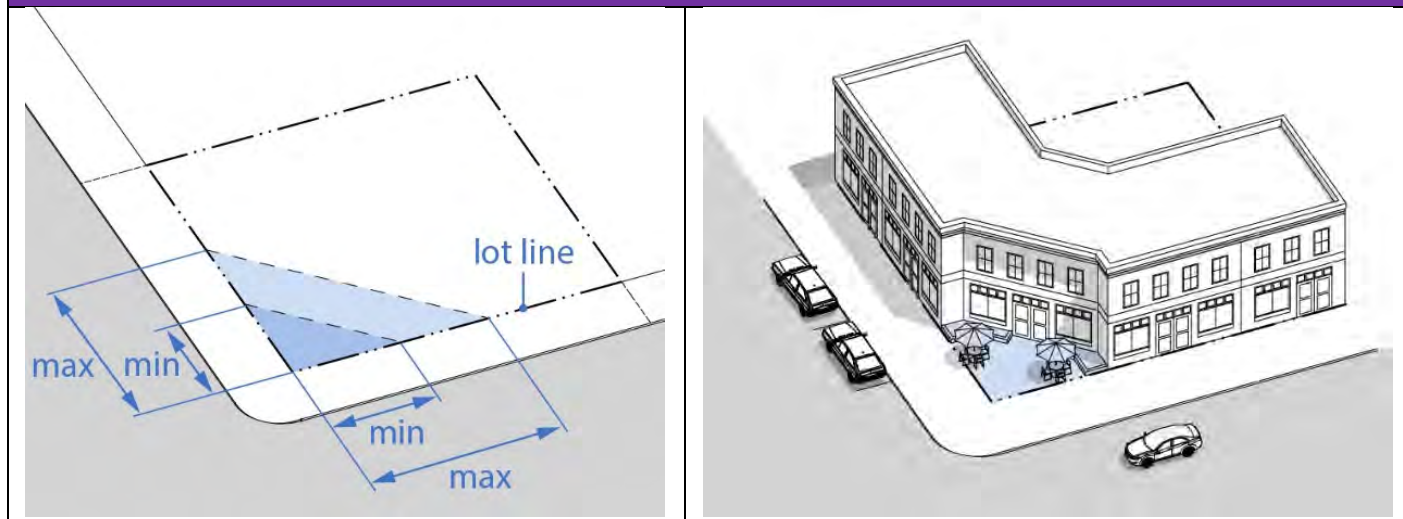


DIAGRAM 9.3.A.6 - FAÇADE ORIENTATION AND CORNER LOT SITE CLEARANCE





# SECTION 9 - OAK GROVE PARK ZONING DISTRICTS

## 9.3. GENERAL STANDARDS FOR ALL BUILDINGS AND LOTS

### A. Building Placement and Orientation

### B. Building Height

### C. Building Proportions and Façade Composition

### D. Roof Types and Design

### E. Exterior Treatments

TABLE 9.3.B.6 - BUILDING SETBACK AND STEPBACK

Distance from Street Right-Of-Way Line	Maximum Building Height by Street Type (See Section 9.7.B)			
	Neighborhood Street	Village Center Street	Trotter Drive	Access Street
At Street Line (0 Feet)	0	30	30	A 5-Foot Setback from the Street Line and based on the Maximum Height for Building Type in Section 9.4.C.
5 Feet	20	35	35	
10 Feet	25	40	40	
15 Feet	35	45	45	
20 Feet	35	50	50	
25 Feet	40	55	55	
30 Feet or More	40	60	60	

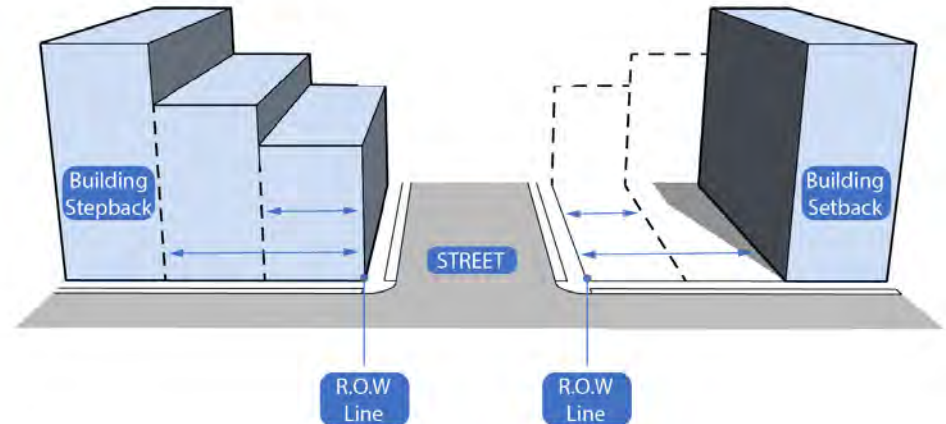


DIAGRAM 9.3.B.2 - BUILDING HEIGHT WITH A FLAT ROOF AND PITCHED ROOF



# SECTION 9 - OAK GROVE PARK ZONING DISTRICTS

## 9.3. GENERAL STANDARDS FOR ALL BUILDINGS AND LOTS

### A. Building Placement and Orientation

### B. Building Height

### C. Building Proportions and Façade Composition

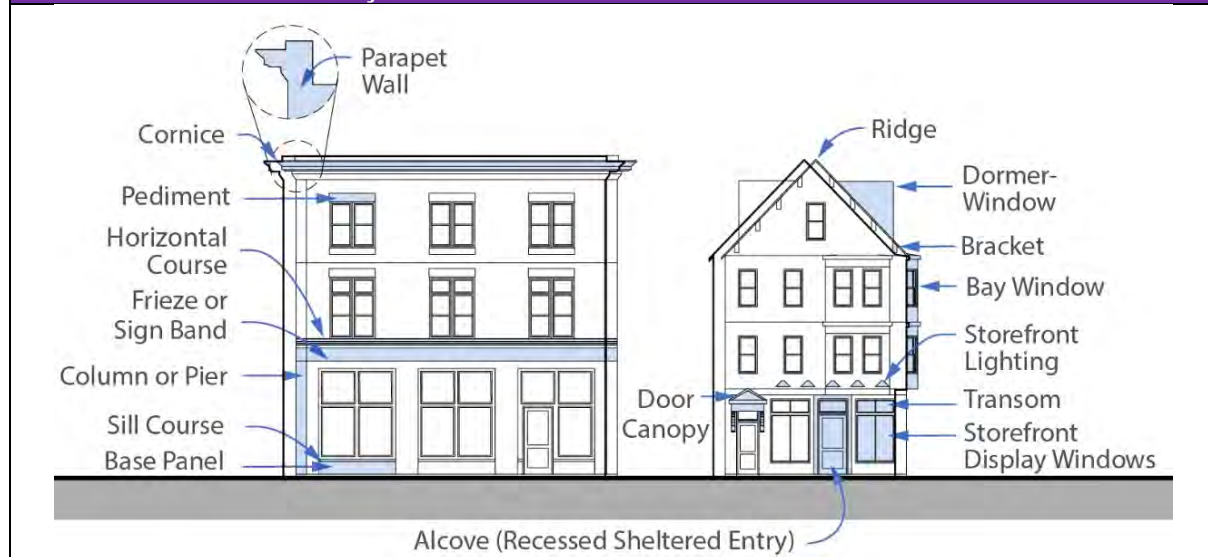
### D. Roof Types and Design

### E. Exterior Treatments

DIAGRAM 9.3.C.3. - GROUND AND UPPER FLOOR TRANSPARENCY



DIAGRAM 9.3.C.3. - FAÇADE COMPONENTS AND ARCHITECTURAL FEATURES





# SECTION 9 - OAK GROVE PARK ZONING DISTRICTS

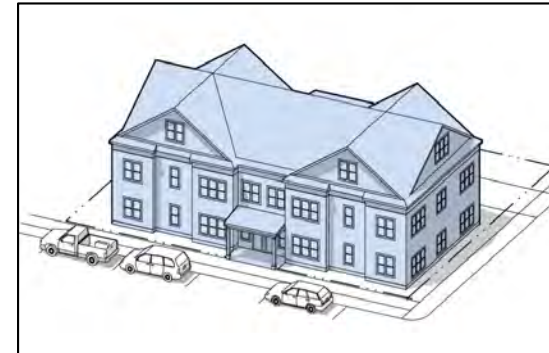
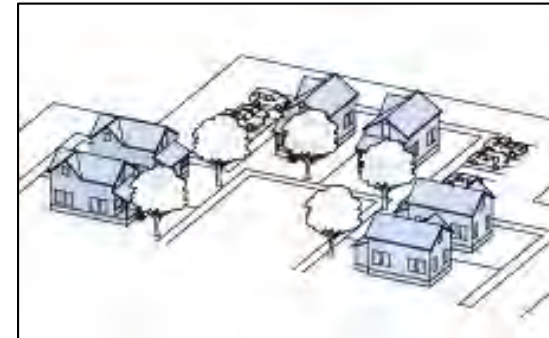
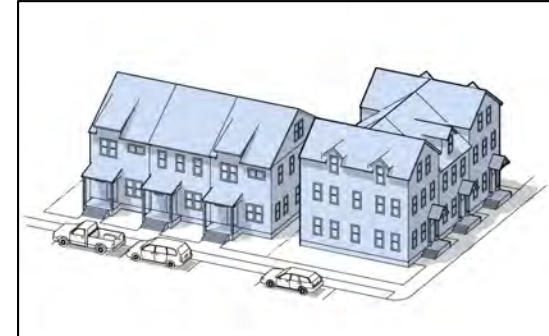
## 9.4 BUILDING TYPES, USE AND DESIGN STANDARDS

### A. Allowable Uses

### B. Determination of Building Type

### C. Allowed Building Types

1. Rowhouse on a Separate Lot
2. Rowhouse on a Common Lot
3. Cottage
4. Multi-Family Building
5. Mixed Use Building
6. General Commercial Building
7. Hotel
8. Gas Station/Convenience Store
9. Fabrication or Flex Building
10. Civic or Community Buildings



# SECTION 9 - OAK GROVE PARK ZONING DISTRICTS

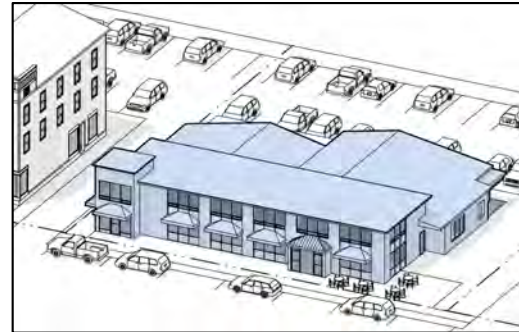
## 9.4 BUILDING TYPES, USE AND DESIGN STANDARDS

### A. Allowable Uses

### B. Determination of Building Type

### C. Allowed Building Types

1. Rowhouse on a Separate Lot
2. Rowhouse on a Common Lot
3. Cottage
4. Multi-Family Building
5. Mixed Use Building
6. General Commercial Building
7. Hotel
8. Gas Station/Convenience Store
9. Fabrication or Flex Building
10. Civic or Community Buildings





# SECTION 9 - OAK GROVE PARK ZONING DISTRICTS

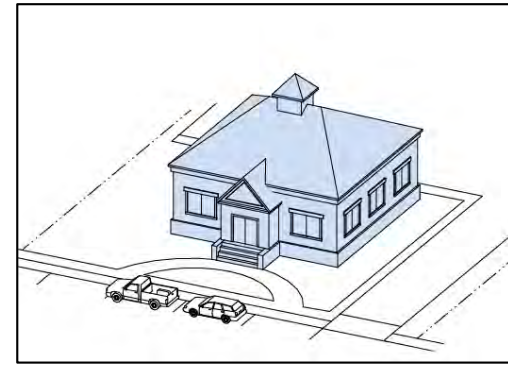
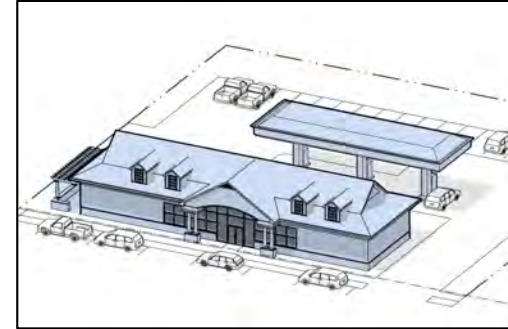
## 9.4 BUILDING TYPES, USE AND DESIGN STANDARDS

### A. Allowable Uses

### B. Determination of Building Type

### C. Allowed Building Types

1. Rowhouse on a Separate Lot
2. Rowhouse on a Common Lot
3. Cottage
4. Multi-Family Building
5. Mixed Use Building
6. General Commercial Building
7. Hotel
8. Gas Station/Convenience Store
9. Fabrication or Flex Building
10. Civic or Community Buildings



# SECTION 9 - OAK GROVE PARK ZONING DISTRICTS

## 9.5 DEVELOPMENT STANDARDS

### A. Development Tract

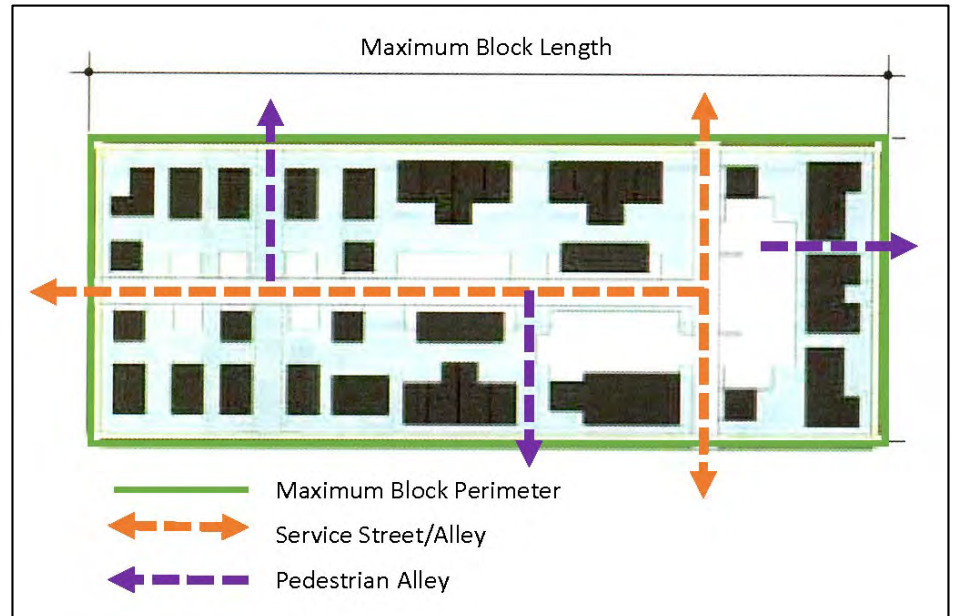
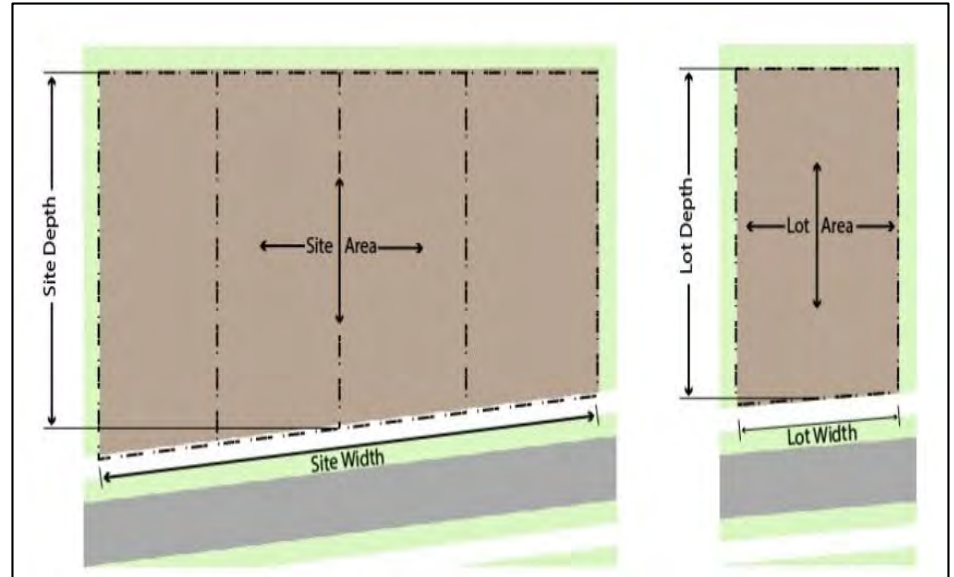
1. Definition of Development Tract
2. Tract Area
3. Permitted Building Types
4. Access
5. Street Frontage
6. Outdoor Amenity Space

### B. Development Types

1. General Industrial Development
2. General Commercial Development
3. Mixed Use Development
4. General Residential Development
5. Pocket Neighborhood

### C. Development Block Standards

1. Size and Dimension
2. Access and Utilities





## SECTION 9 - OAK GROVE PARK ZONING DISTRICTS

### 9.5 DEVELOPMENT STANDARDS

#### D. Parking Requirements

1. Purpose and Intent
2. Applicability

Refer to Section 7.1.1: Parking  
Requirements amended in ATM 05.13.19

#### E. Site Landscaping

Refer to PEDC Chapter 200: Site Plans- Rules  
& Regulations (Sec. 205-9)

#### F. Utilities

1. Public Utilities
2. Trash and Service Areas

Underground Utilities and Screened Service  
Areas

#### G. Sustainable Site Design Standards

Refer Chapter 200, Sec. 205-4; Art. 26 –  
Medway Stormwater Management Bylaw

#### H. Site Improvement Guidelines

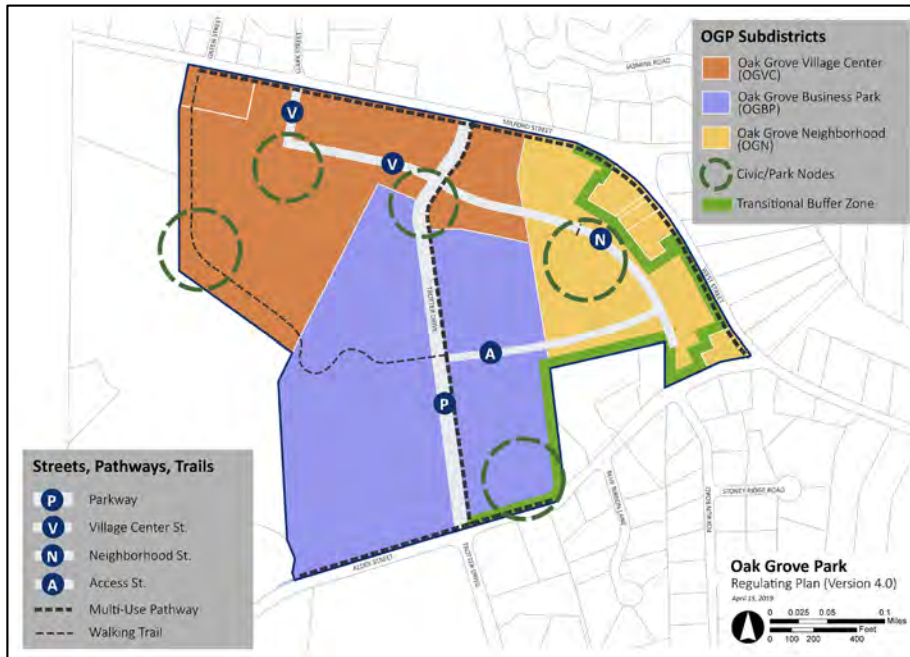
Refer to Medway Design Review Guidelines

# SECTION 9 - OAK GROVE PARK ZONING DISTRICTS

## 9.6 OUTDOOR AMENITY SPACE

### A. General Standards

1. Outdoor Amenity Space Types
  - a. Civic Space (CS)
  - b. Publicly Oriented Private Spaces (POPS)
  - c. Private Open Space (PS)
2. Required Outdoor Amenity Space
3. Determination of Outdoor Amenity Space



Civic Space (CS)



Private Open Space (PS)



Publicly Oriented Private Spaces (POPS)

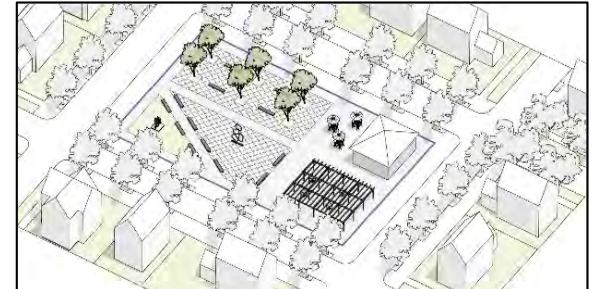
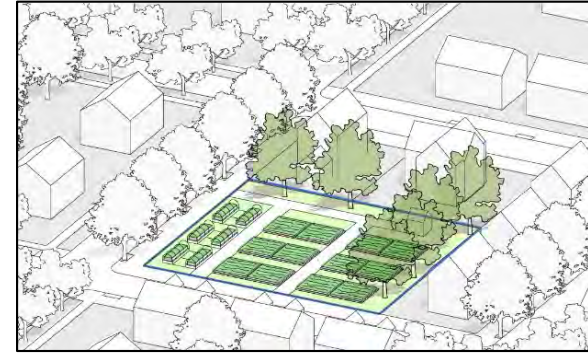


# SECTION 9 - OAK GROVE PARK ZONING DISTRICTS

## 9.6 OUTDOOR AMENITY SPACE

### B. Permitted Outdoor Amenity Spaces

1. Private Yard
2. Dooryard
3. Forecourt
4. Community Garden
5. Courtyard
6. Plaza or Square
7. Pocket Park or Playground
8. Athletic Field or Ball Court
9. Common or Green
10. Neighborhood Park/Preserve
11. Pathway
12. Pedestrian Passage
13. Outdoor Dining
14. Rooftop Terrace

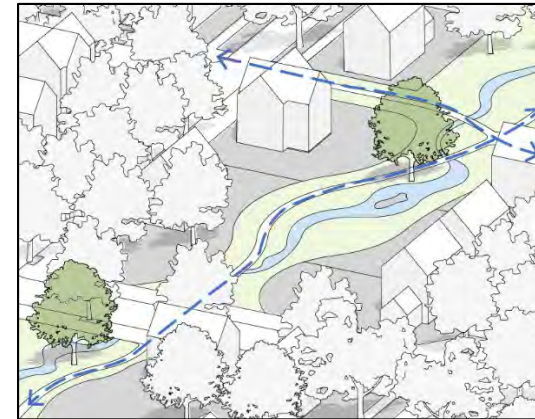
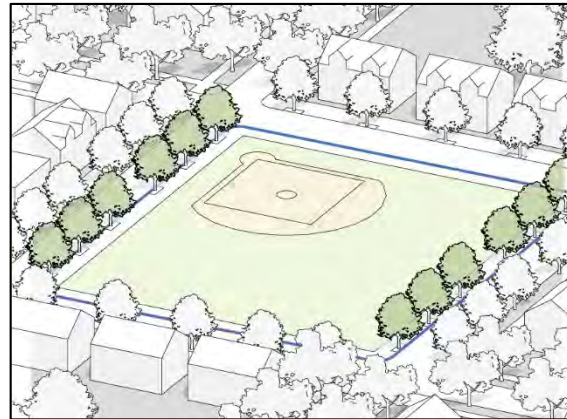
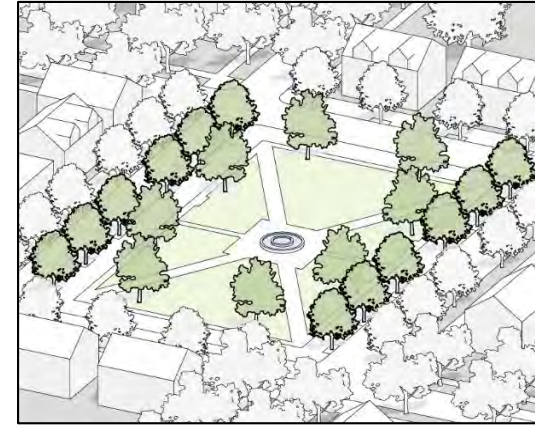
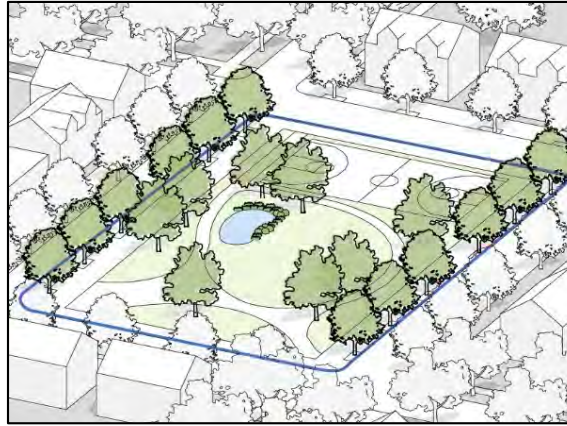


# SECTION 9 - OAK GROVE PARK ZONING DISTRICTS

## 9.6 OUTDOOR AMENITY SPACE

### B. Permitted Outdoor Amenity Spaces

1. Private Yard
2. Dooryard
3. Forecourt
4. Community Garden
5. Courtyard
6. Plaza or Square
7. Pocket Park or Playground
8. Athletic Field or Ball Court
9. Common or Green
10. Neighborhood Park/Preserve
11. Pathway
12. Pedestrian Passage
13. Outdoor Dining
14. Rooftop Terrace



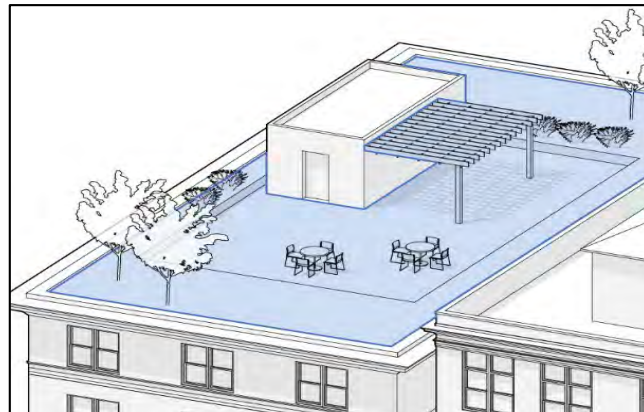
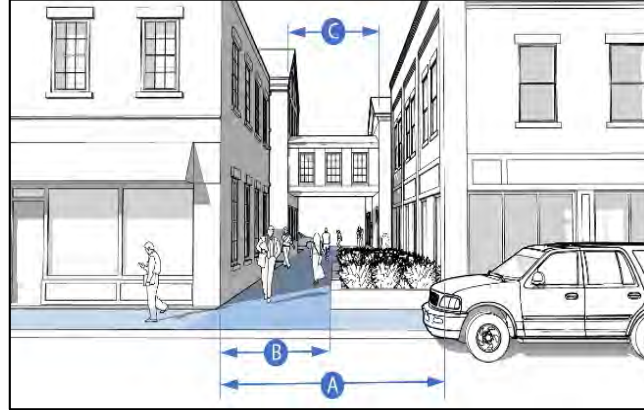


# SECTION 9 - OAK GROVE PARK ZONING DISTRICTS

## 9.6 OUTDOOR AMENITY SPACE

### B. Permitted Outdoor Amenity Spaces

1. Private Yard
2. Dooryard
3. Forecourt
4. Community Garden
5. Courtyard
6. Plaza or Square
7. Pocket Park or Playground
8. Athletic Field or Ball Court
9. Common or Green
10. Neighborhood Park/Preserve
11. Pathway
12. Pedestrian Passage
13. Outdoor Dining
14. Rooftop Terrace



# SECTION 9 - OAK GROVE PARK ZONING DISTRICTS

## 9.7 PUBLIC REALM STANDARDS

### A. Purpose

### B. Street & Pathway Design Standards

1. Construction Standards
2. Design Standards
3. Vehicle Travel Lanes
4. On-Street Parking Lanes
5. Sidewalks.
6. Parking Lane
7. Curb Extensions (Bulb-Outs)
8. Street Trees.
9. Driveway and Sidewalk Crossings.
10. Multi-Use Pathways and Walking Trails

### C. Public Realm Interface

1. Building Frontage Zones
2. Building Interface within ROW
3. Parklets
4. Pedestrian Passages
5. Signs

TABLE 9.7.B.10. – STREET AND PATHWAY DESIGN STANDARDS


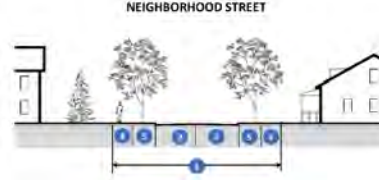
Street Component		
	Trotter Drive	Village Center Street
① Street Right-Of-Way	50 Ft. Minimum	50 Ft. Minimum
② Travel Lane	12 Ft.	11 Ft.
③ Parking Lane	Prohibited	8 Ft. (Option on one or both sides of the street)
④ Sidewalks		
4A. Public Frontage Zone	Optional (4' min. if provided)	Optional (4' Min. if Provided)
4B. Walkway Zone	5 Ft. Minimum both sides of street	5 Ft. Minimum both sides of street
4C. Furnishing & Utility Zone	Optional (4' min. if provided)	4 Ft. Minimum both sides of street
⑤ Tree Belt	8 Ft. Minimum	Optional (4' Min. if Provided)
⑥ Multi-Use Pathway	Optional on 60' Min. ROW; 10 Ft. Min. if Provided and 12' Optimal	Prohibited

TABLE 9.7.B.10. – STREET AND PATHWAY DESIGN STANDARDS

Street Component		
	Neighborhood Street	Access Street
① Street Right-Of-Way	40 Ft. Minimum	25 Ft Minimum
② Travel Lane	11 Ft.	10 Ft.
③ Parking Lane	Not required	Prohibited
④ Sidewalks		
4A. Public Frontage Zone	Prohibited	Prohibited
4B. Walkway Zone	5 Ft. Minimum both sides	1 Side/5 Ft. Minimum
4C. Furnishing & Utility Zone	Prohibited	Prohibited
⑤ Tree Belt	5 Ft. Minimum	Prohibited
⑥ Multi-Use Pathway	Optional	Prohibited



# SECTION 9 - OAK GROVE PARK ZONING DISTRICTS

## 9.7 PUBLIC REALM STANDARDS

### A. Purpose

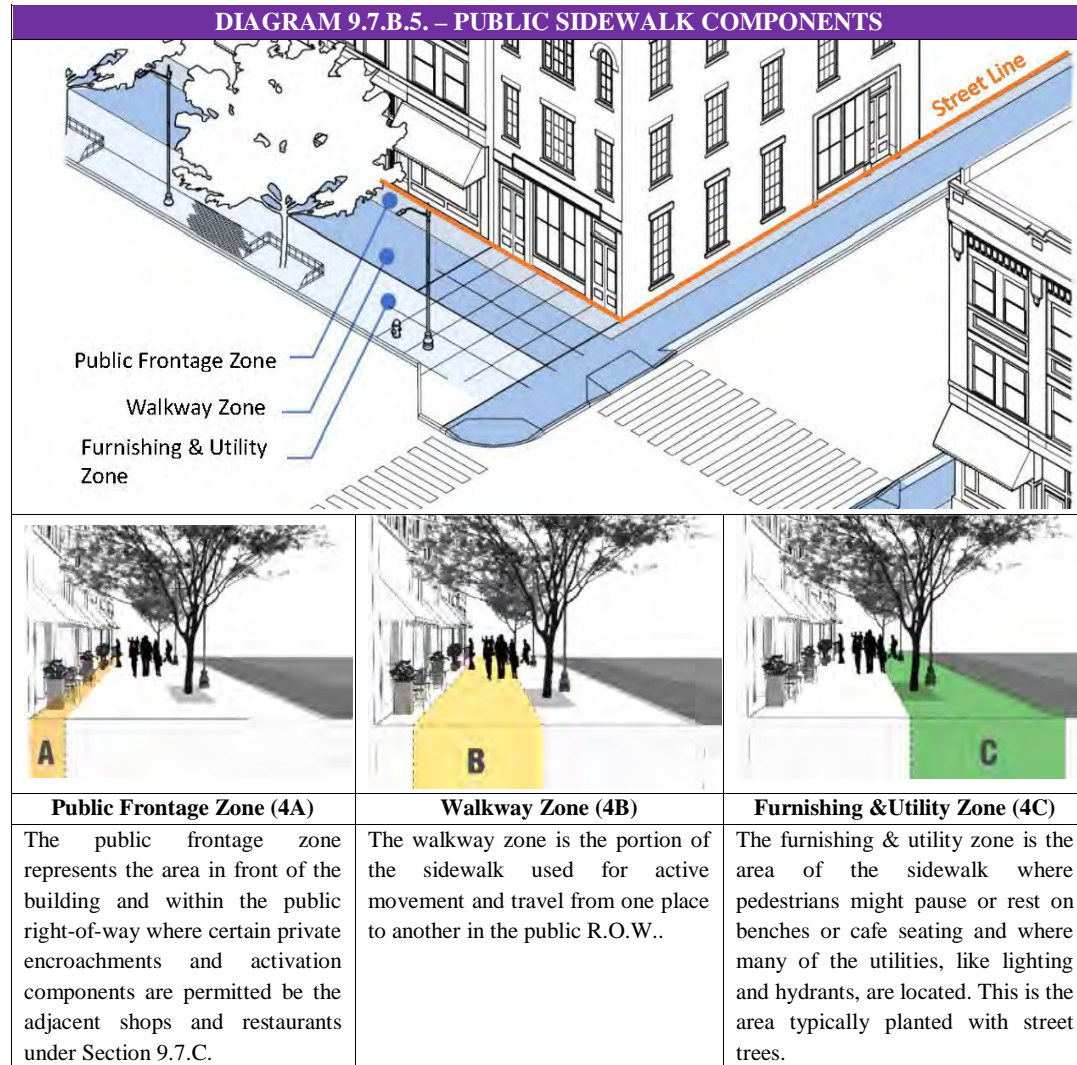
### B. Street & Pathway Design Standards

1. Construction Standards
2. Design Standards
3. Vehicle Travel Lanes
4. On-Street Parking Lanes
5. Sidewalks.
6. Street Enhancement Zones
7. Curb Extensions (Bulb-Outs)
8. Street Trees.
9. Driveway and Sidewalk Crossings.
10. Multi-Use Pathways and Walking Trails

### C. Public Realm Interface

1. Building Frontage Zones
2. Building Interface within ROW
3. Parklets
4. Pedestrian Passages
5. Signs

DIAGRAM 9.7.B.5. – PUBLIC SIDEWALK COMPONENTS



# SECTION 9 - OAK GROVE PARK ZONING DISTRICTS

## 9.7 PUBLIC REALM STANDARDS

### A. Purpose

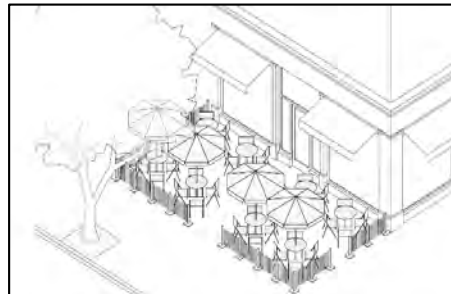
### B. Street & Pathway Design Standard

1. Construction Standards
2. Design Standards
3. Vehicle Travel Lanes
4. On-Street Parking Lanes
5. Sidewalks.
6. Street Enhancement Zones
7. Curb Extensions (Bulb-Outs)
8. Street Trees.
9. Driveway and Sidewalk Crossings.
10. Multi-Use Pathways and Walking Trails

### C. Public Realm Interface

1. Building Frontage Zones
2. Building Interface within ROW
3. Parklets
4. Pedestrian Passages
5. Signs

DIAGRAM 9.7.C.1. – BUILDING FRONTAGE ZONES





# SECTION 9 - OAK GROVE PARK ZONING DISTRICTS

## 9.8 DENSITY AND BULK STANDARDS

### A. Base Residential Density

### B. Density Bonus Requirements

1. General Requirement
2. Approval of Density Bonus Improvements

## 9.9 DESIGN WAIVERS AND SPECIAL PERMIT CRITERIA

### A. Purpose

### B. Review Criteria

### C. Conditions

TABLE 9.8.A.. - RESIDENTIAL DENSITY BY ZONING DISTRICT			
BUILDING TYPES	BY RIGHT/SPECIAL PERMIT UNITS PER 44,000 S.F.		
	OGVC	OGN	OGBP
Cottage	N/A	8 by right/16 special permit (“s.p”).	N/A
Rowhouse	12 by right/16 s.p.	12 by right/ 16 s.p.	N/A
Multi-Family Building	20 by right/ 24 s.p.	20 by right/ 24 s.p.	N/A
Mixed-Use Buildings	20 by right/ 24 s.p.	20 by right/ 24 s.p.	N/A

## 9.10 FORM-BASED DISTRICTS



# OAK GROVE PARK

## ZONING REGULATIONS & DESIGN STANDARDS

Town of Medway, MA

COMMUNITY FORUM

Oak Grove Zoning Task Force

June 10, 2019

### Consulting Team:

- Brovitz Community Planning & Design
- Dodson & Flinker



### Oak Grove Zoning Community Forum

Monday, June 10, 2019 @ 7 PM  
(Refreshments & socializing at 6:30 pm)

Thayer Homestead  
2B Oak Street – Medway  
Please, no parking on Oak Street.

- Presentation by Ted Brovitz, the Town's Oak Grove zoning consultant about proposed zoning for the redevelopment of the Oak Grove Urban Renewal area (Bottle Cap Lots)
- Questions & Answers

The draft Oak Grove Zoning Bylaw is available for review at  
<https://www.townofmedway.org/oak-grove-zoning-task-force-ogztf>

If you are not able to attend the Forum but have questions about the project or the draft zoning, please contact the Medway Community and Economic Development office at 508-321-4915.

The Oak Grove Zoning Community Forum is sponsored by:  
Oak Grove Zoning Task Force  
Medway Redevelopment Authority