

Town of Medway

Snow & Ice Management

Policy & Guide

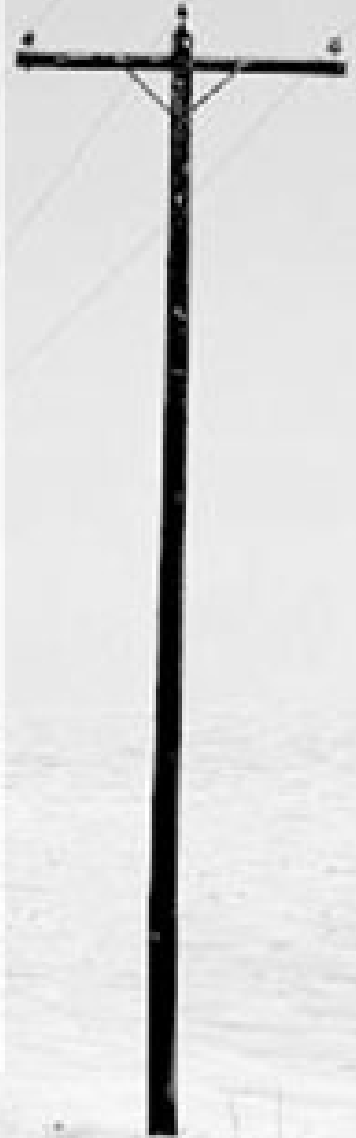


January 8, 2018



Overview

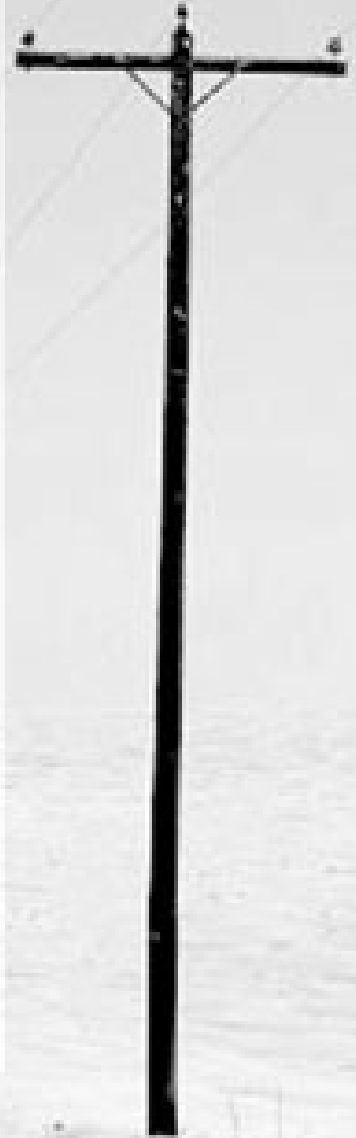
- ✱ Provide safe streets and sidewalks during snow and ice events and emergencies
- ✱ Responsibility of the Dept. of Public Services (DPS)
- ✱ Only sand & salt for overnight freeze-ups, ice, and minor wet snow storms
- ✱ Plowing and potentially sanding/salting performed during more significant storms
- ✱ Emergency work performed anytime, day or night, 24 hours a day, 7 days a week





Operations Facts

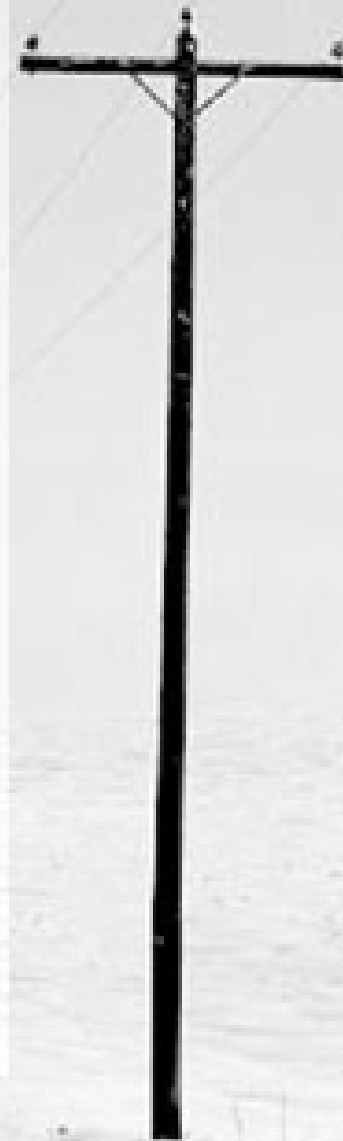
- ✱ Over 100 miles of road and cul-de-sacs
- ✱ Town owned fleet of twelve vehicles
- ✱ Primary drivers and mechanics in DPS-Highway Division.
- ✱ Secondary support DPS-Water & Sewer Div.
- ✱ Contractors added for major storms
 - ✓ Up to 25 contractors available with up to 66 pieces of equipment when needed
- ✱ Approximately 3,600 tons of salt and sand used annually in de-icing operations





Response Objectives

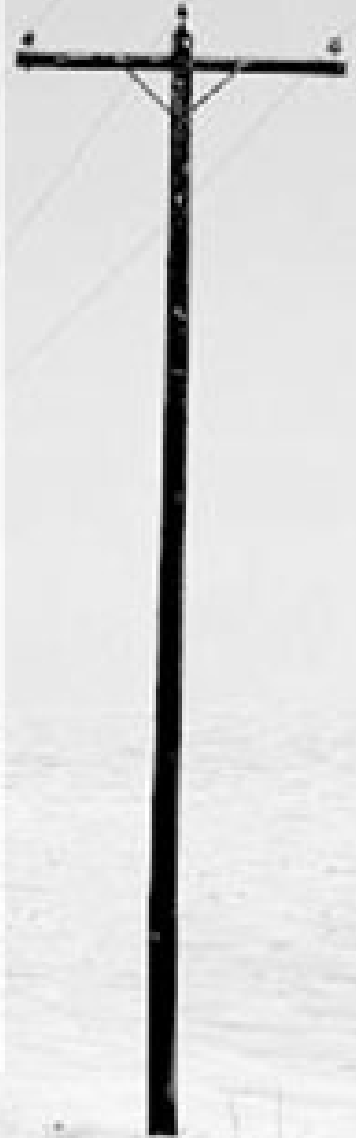
- ✿ Medway endorses bare pavement policy
 - ✓ Use salt early to ensure easier removal of pack snow
 - ✓ Roads generally rut free and smooth
 - ✓ Major routes show pavement shortly after storm ends
 - ✓ Neighborhood roads with light traffic plowed yet may be snow covered for days
- ✿ Push back snow off of roadway to maintain road width and open catch basins
- ✿ Clear intersections for visibility as needed





Response Plan

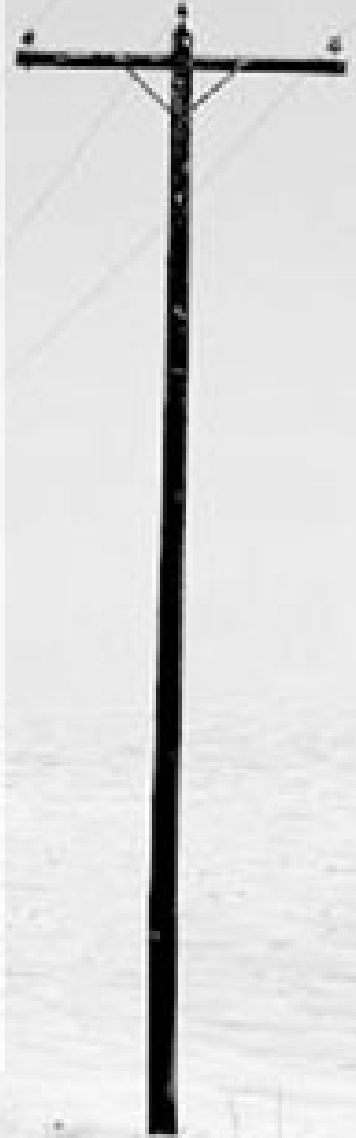
- ✿ Police Dept. in conjunction with Highway Superintendent evaluate road conditions
- ✿ Overnight freezing or light snow
 - ✓ Sand and salt only
 - ✓ Primary operators and mechanics in DPS-Highway
- ✿ Minor storms with minor traffic impacts
 - ✓ Generally 2 to 3 inches of snow requiring plowing
 - ✓ Secondary support from DPS-Water & Sewer
- ✿ All storms with serious commuting impacts
 - ✓ Contractors used to supplement Town forces





Completion Time

- ✱ Typically complete primary response 2 to 3 hours after most snow accumulation has stopped.
- ✱ **Completion time depends on many factors**
- ✱ Moisture content of the snow
 - ✓ Dry, fluffy snow = less salt, sand, and plowing
 - ✓ Heavy, wet snow = more salt, sand, and plowing
 - ✓ Wet snow and freezing road temperatures create dangerous driving conditions
- ✱ Duration
 - ✓ A four inch storm in 24 hours is more demanding than a six inch storm in 8 hours
 - ✓ Crew rest periods after 12 hours driving further slows response time





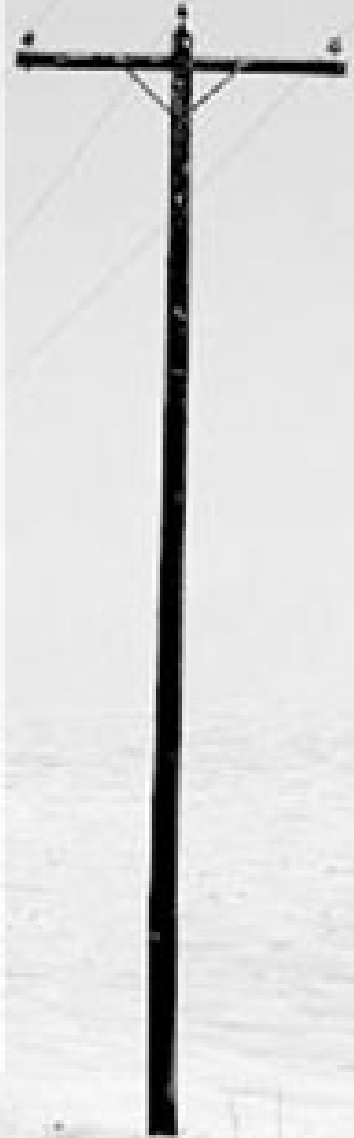
Completion Time (con't)

✿ Timing of the storm

- ✓ Late night/early morning storms provide extra time to clear roads
- ✓ Commuting hour storms result in packed snow making plowing more difficult
- ✓ December/January low sun lengthens melt times
- ✓ February/March higher sun shortens melt times

✿ Other factors increasing response time

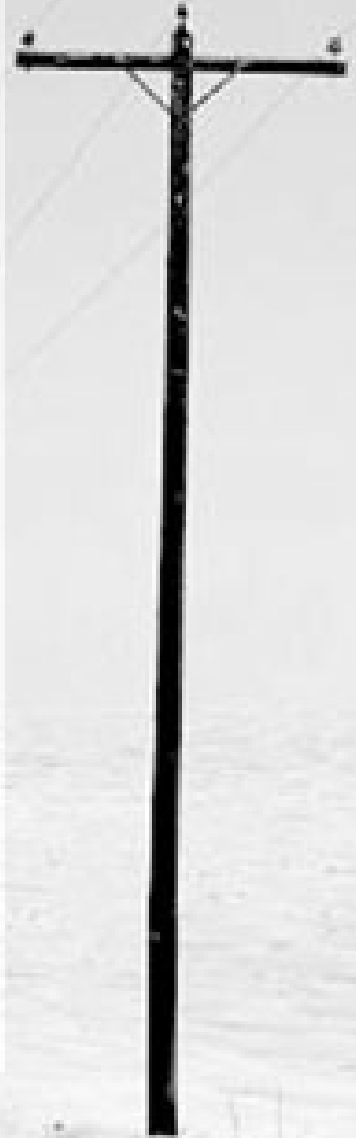
- ✓ Freezing rain mix
- ✓ Wind and blowing snow
- ✓ Road surface temperature below freezing





Priorities

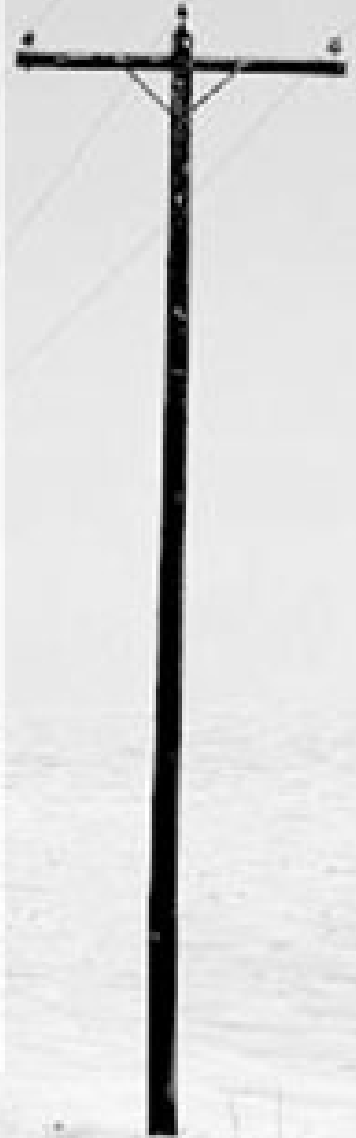
- ✿ Public safety and travel volumes determine priority
- ✿ Priority 1
 - ✓ Major roadways servicing largest volumes of commuters given top priority
 - ✓ Major intersections
 - ✓ School bus routes
 - ✓ Steep grades
- ✿ Priority 2
 - ✓ Secondary connector roads
- ✿ Priority 3
 - ✓ Neighborhood roads, side streets, cul-de-sacs will be done as time and conditions permit





Priorities (con't)

- ✿ Priority 4
 - ✓ Parking and access to municipal/school facilities
- ✿ Priority 5
 - ✓ Sidewalks
- ✿ No work done on private property or private ways

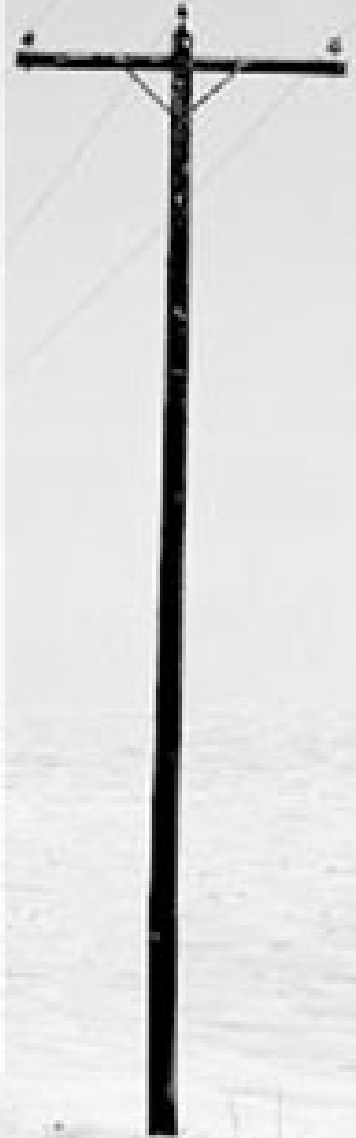




Sidewalks

❁ Sidewalks on roads listed below are primary and serviced by the Town as soon as practical.

- Barber Street
- Center Street
- Pond Street
- Broad Street
- Legion Avenue
- Sanford Street
- Cassidy Street
- North Street
- School Street
- Highland Street where sidewalks exist
- Oakland Street where sidewalks exist
- Village St. from Center St. to Oakland St.
- Holliston St. from Village St. to Ellis St.
- Lovering St. from Holliston St. to Lovering Heights
- Main St. from Highland St. to Oakland St.
- Maple St. from Lovering St. to Delmar Rd.
- Summer St. from Milford St. to Holliston Town Line

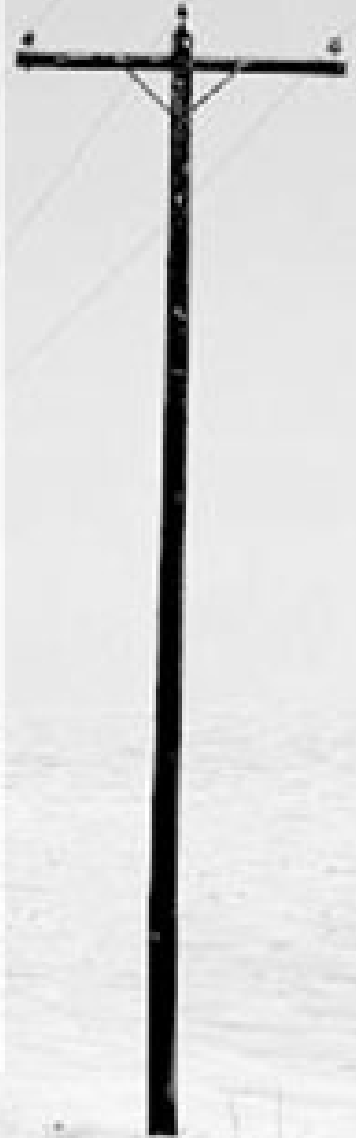




Sidewalks (con't)

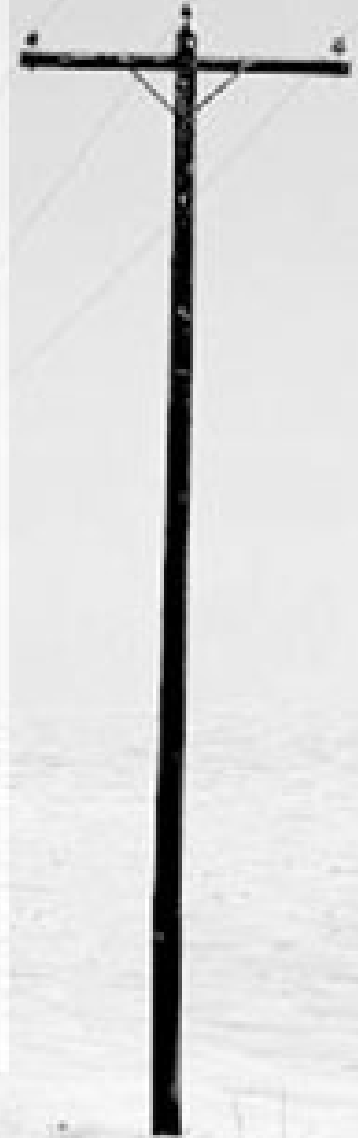
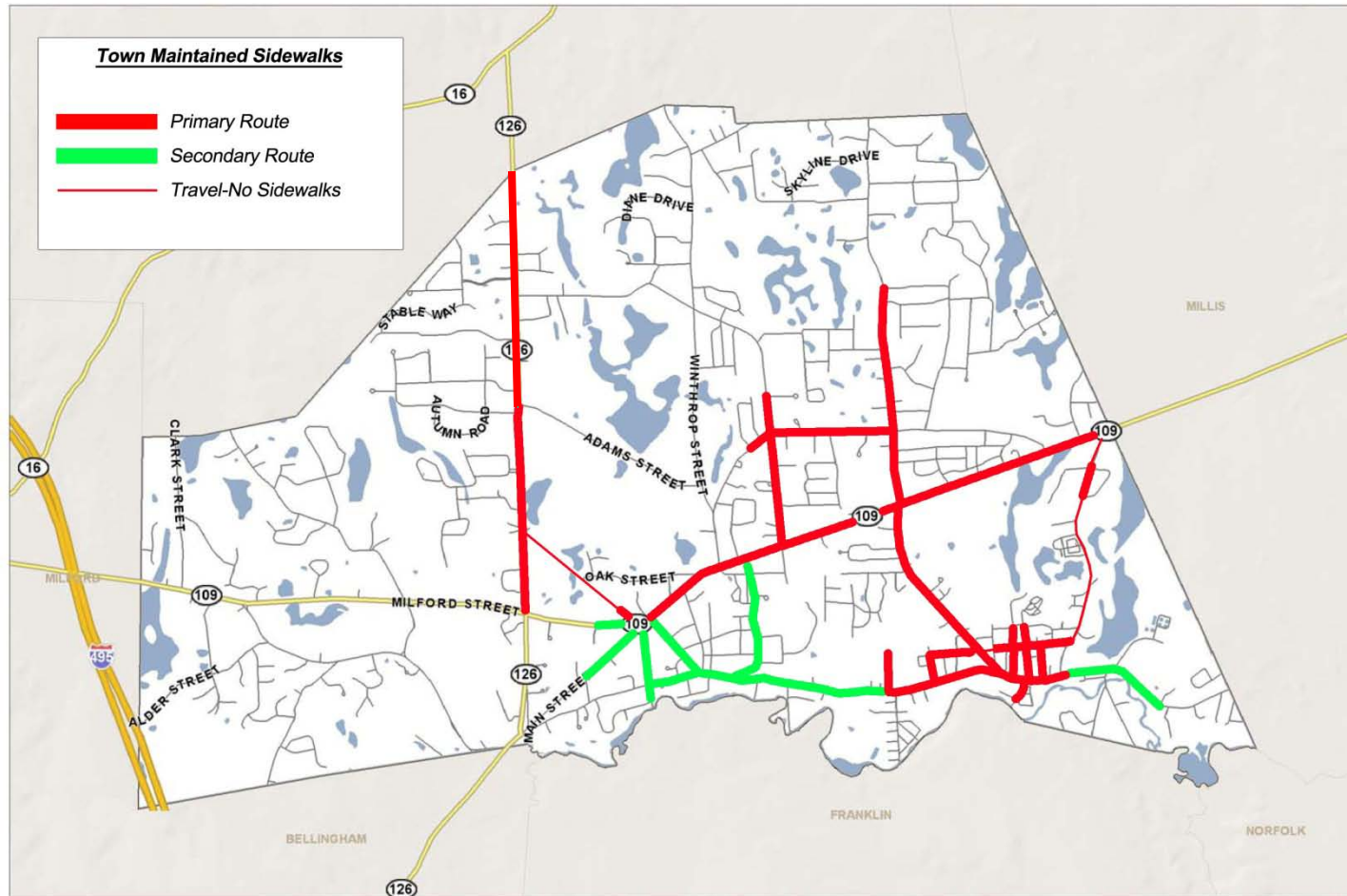
✿ In addition, the following routes may be done as time and equipment permit:

- Cottage Street
- High Street
- Main Street from Highland Street to Country Lane
- Milford Street from Main Street to Fales Street
- Village Street from Center Street to Franklin Street
- Village Street from Island Road to Oakland Street
- Franklin Street from Waterview Circle to Main Street





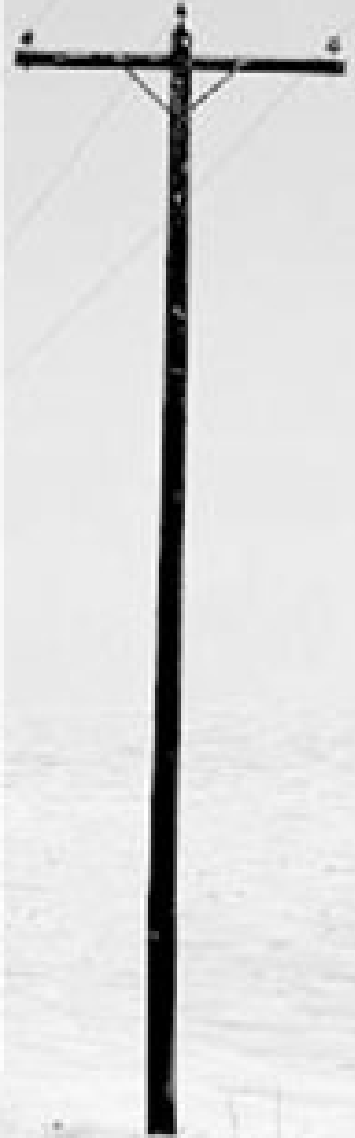
Sidewalks (con't)





Sidewalks (con't)

- ✿ Sidewalks are lowest priority
- ✿ May not be cleared for days following a storm
- ✿ DPS crews are not required to sand sidewalks, but may do so if time and funds permit
- ✿ Sidewalks on streets not listed are the responsibility of residents and businesses.
 - ✓ Clear areas in front of your property and beyond
 - ✓ Help neighbors who are not able
 - ✓ Take responsibility, take ownership, take pride
 - ✓ Make your neighborhood a better, safer place



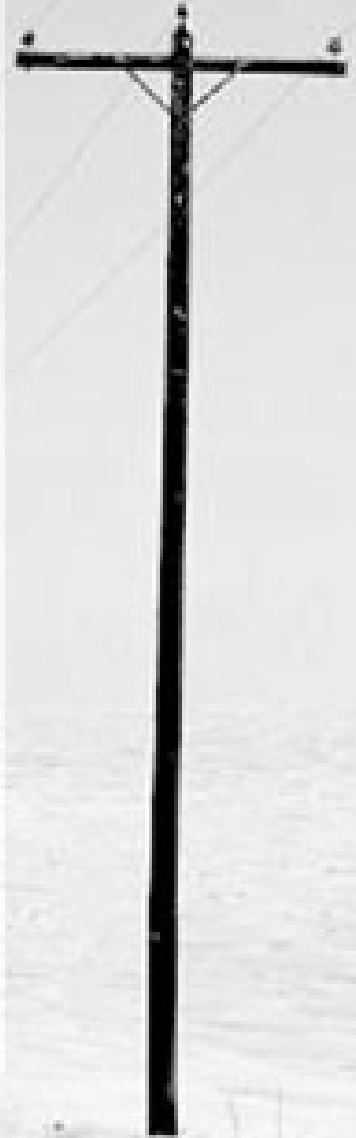


Other Facilities Serviced

- Police Station
- All School Parking Areas
- Town Hall
- Library
- Fire Stations
- Parks
- Water Stations
- Senior Center

✻ Service includes

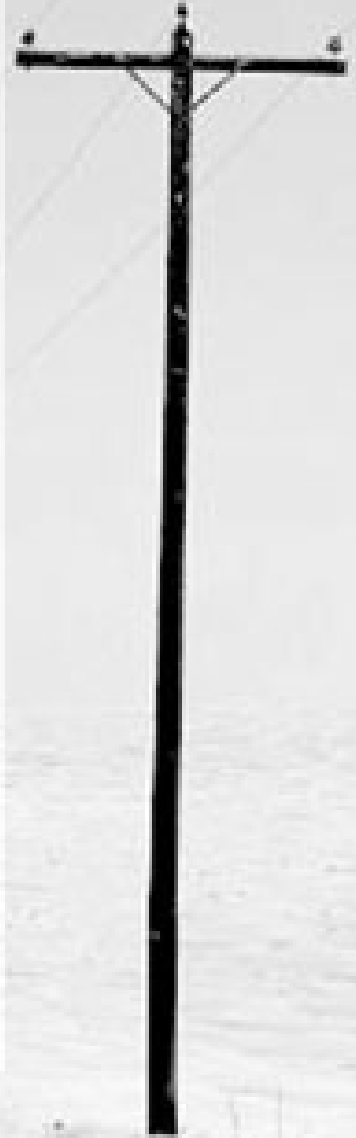
- ✓ sanding and plowing parking areas
- ✓ clearing and sanding walkways and entry ways at all facilities except schools who use own staff





Property Damage Liability

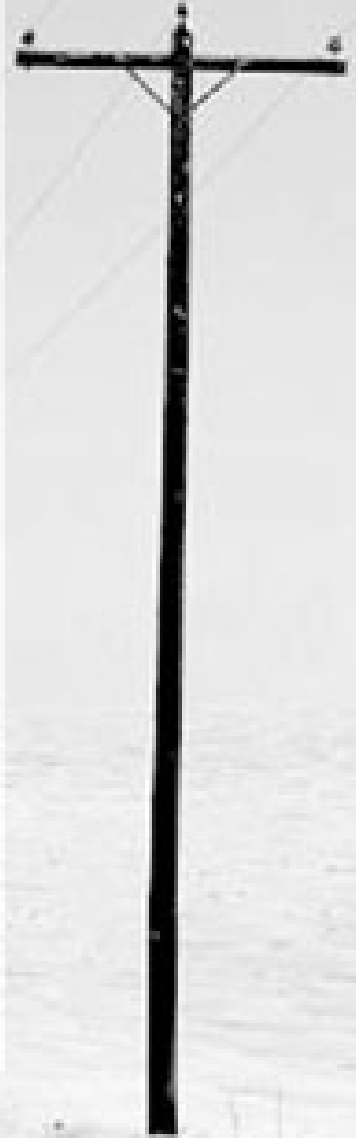
- ✿ Town is responsible for damage caused to private property on private property in full
- ✿ Town has a mailbox damage policy
 - ✓ Damage caused by municipal plowing operations
 - ✓ \$50 flat rate compensation regardless of actual cost
 - ✓ Only one claim accepted annually
 - ✓ Consider relocating a mailbox damaged regularly
- ✿ Town not liable for any fence, shrub, toy, or any other object left in the public way
 - ✓ Note: Public ways extend 5 to 10 feet beyond the road pavement
- ✿ Damaged lawns in the public way may be loamed and seeded by DPS if funds permit





We Need Your Help

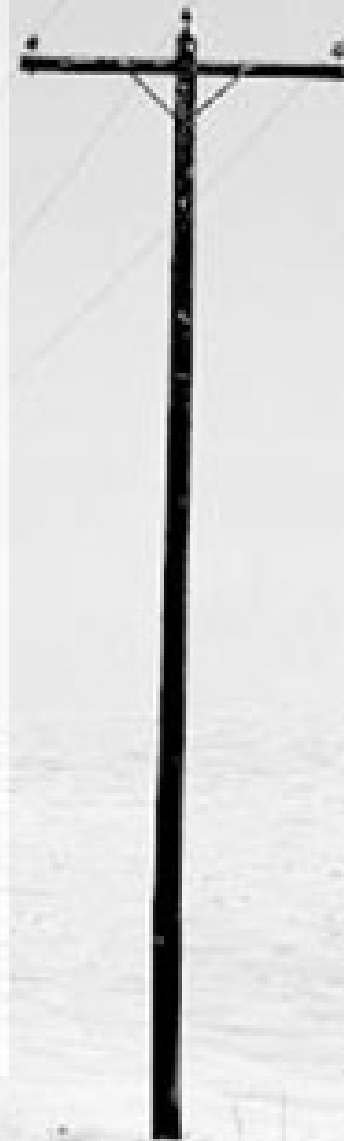
- ✿ Clear catch basins to:
 - ✓ allow melting snow/rain to leave the road surface
 - ✓ avoid icing and flooding
- ✿ Clear fire hydrants
- ✿ Clear path to mailboxes
- ✿ Clear sidewalks in front of your property that the Town doesn't handle
- ✿ Avoid parking in roads until plowing is over
 - ✓ Obey the parking bans and never park on a sidewalk





Need Your Help (con't)

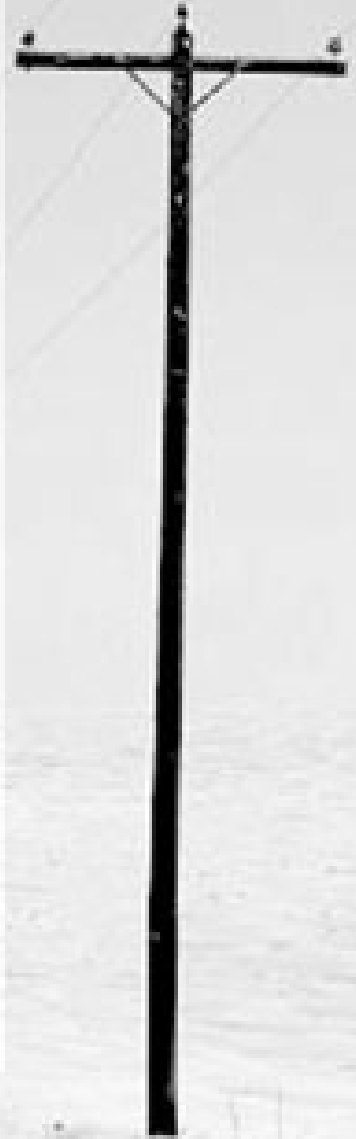
- ✿ Clear driveway entrances
 - ✓ Tips: Wait until plowing is over. Snow at the entrance stops snow from shedding off the plow blade and onto your property
 - Always clear to the right when facing the road to keep snow away from your property
- ✿ On trash days, keep bags and carts on your property or curbside off the sidewalk.
 - ✓ It's not pretty after they go through the sidewalk snowblower!
 - ✓ Good idea for newspaper deliveries too.
- ✿ Put up markers near the edge of pavement to help us “see” the road





Be Considerate, Be Safe

- ✿ Don't stand in the plow's path
 - ✓ For safety, roads need to be cleared curb-to-curb
 - ✓ It slows down the process
- ✿ Do not throw or plow snow into or across roads
 - ✓ It is against the law
 - ✓ It is dangerous and you bear the liability
 - ✓ It makes your neighbors angry
- ✿ Slow down and expect the trip to take longer
 - ✓ Roads will not be bare, there will be ruts, pack snow, and ice during and after the storm on any road, anywhere.





- ✿ Contact the Dept. of Public Services
 - ✓ Normal office hours at 508-533-3275
 - ✓ Nights / weekends during a storm at 508-533-3221

- ✿ Storm watch and school closings
 - ✓ Local radio and TV stations
 - ✓ Medway Cable Channel 8

- ✿ Special notices, forms, and complete policy/guide
 - ✓ <http://www.townofmedway.org>

