

**Meeting #2**

**March 3, 2022, 5:00 pm Via Zoom**



# **VILLAGE OF SARANAC LAKE LOCAL WATERFRONT REVITALIZATION PROGRAM UPDATE**

**WATERFRONT ADVISORY COMMITTEE (WAC) MEETING #2**





**Department  
of State**

This presentation was prepared with funding provided by the New York State Department of State under Title 11 of the Environmental Protection Fund.





# [ Agenda ]

1  
Welcome /  
Schedule Update

2  
Inland  
Community  
Policies

3  
WRA  
Boundary  
Confirmation



4  
Preliminary Inventory  
Mapping

5  
Visioning Exercise

6  
Public Engagement

7  
Next Steps



# WELCOME / SCHEDULE UPDATE





PROJECT TASK	DEC 2021	JAN 2022	FEB 2022	MAR 2022	APR 2022	MAY 2022	JUN 2022	JUL 2022	AUG 2022	SEP 2022	OCT 2022	NOV 2022	DEC 2022	JAN 2023	FEB 2023	MAR 2023
COMMITTEE MEETINGS	△		△		△		△		△		△		△			
TASK 6: PROJECT MEETING	◡															
TASK 7: COMMUNITY OUTREACH PLAN			◻	◊					◊							
TASK 8: SECTION I - WATERFRONT REVITALIZATION AREA BOUNDARY																
TASK 9: SECTION II - INVENTORY & ANALYSIS																
TASK 10: FIRST PUBLIC INFORMATION MEETING			●													
TASK 11: SECTION III - LWRP PROGRAM POLICIES																
TASK 12: SECTION IV - PROPOSED LAND/WATER USES & PROJECTS					◡											
TASK 13: SECOND PUBLIC INFORMATION MEETING							●									
TASK 14: SECTION V - TECHNIQUES FOR LOCAL IMPLEMENTATION																
TASK 15: SECTION VI - FEDERAL/STATE ACTIONS AFFECTING IMPLEMENTATION																
TASK 16: SECTION VII - LOCAL COMMITMENT & CONSULTATION																
TASK 17: SEQRA COMPLIANCE																
TASK 18: DRAFT LWRP (INCLUDES DOS LEGAL REVIEW & 60-DAY REVIEW)																

\*Schedule is subject to change.

SYMBOL	ENGAGEMENT ACTIVITY
●	Public Meeting (Web-Based)
△	Waterfront Committee Meeting (Web-Based)
△	Waterfront Committee Meeting (In-Person)

SYMBOL	ENGAGEMENT ACTIVITY
◻	Stakeholder Group Meeting(Web-Based)
◊	Village Board Update (Web-Based)
◡	Site Visit



# INLAND COMMUNITY PROGRAM POLICIES

KATHERINE HOGLE, NYSDOS





# WRA BOUNDARY CONFIRMATION



# [WRA Boundary]

- The Waterfront Revitalization Area (WRA) is the area of focus for the LWRP
- Current (original)WRA Boundary is the Village of Saranac Lake Municipal Boundary





# [WRA Boundary]

## What it means to be within the WRA:

- Funding opportunities for proposed projects within WRA
- Actions (to be determined) may be subject to Local Waterfront Consistency Review Law, which will be an outcome of the LWRP effort



# [WRA Boundary]

## Changing the WRA

- A municipality may determine a different boundary through the LWRP process
- Change requires written justification
- Must be approved by the DOS





# [WRA Boundary]

## Changing the WRA

- Determination of the WRA upland boundary should reflect the following criteria:
  - Areas that affect/ are affected by waterfront issues
  - Natural/cultural resources with a relationship to the waterfront
  - Areas necessary for the achievement of policies in the LWRP
  - Follow recognizable natural or cultural features
  - Reflect a nexus between activities occurring in the upland portion of the WRA and the waterway





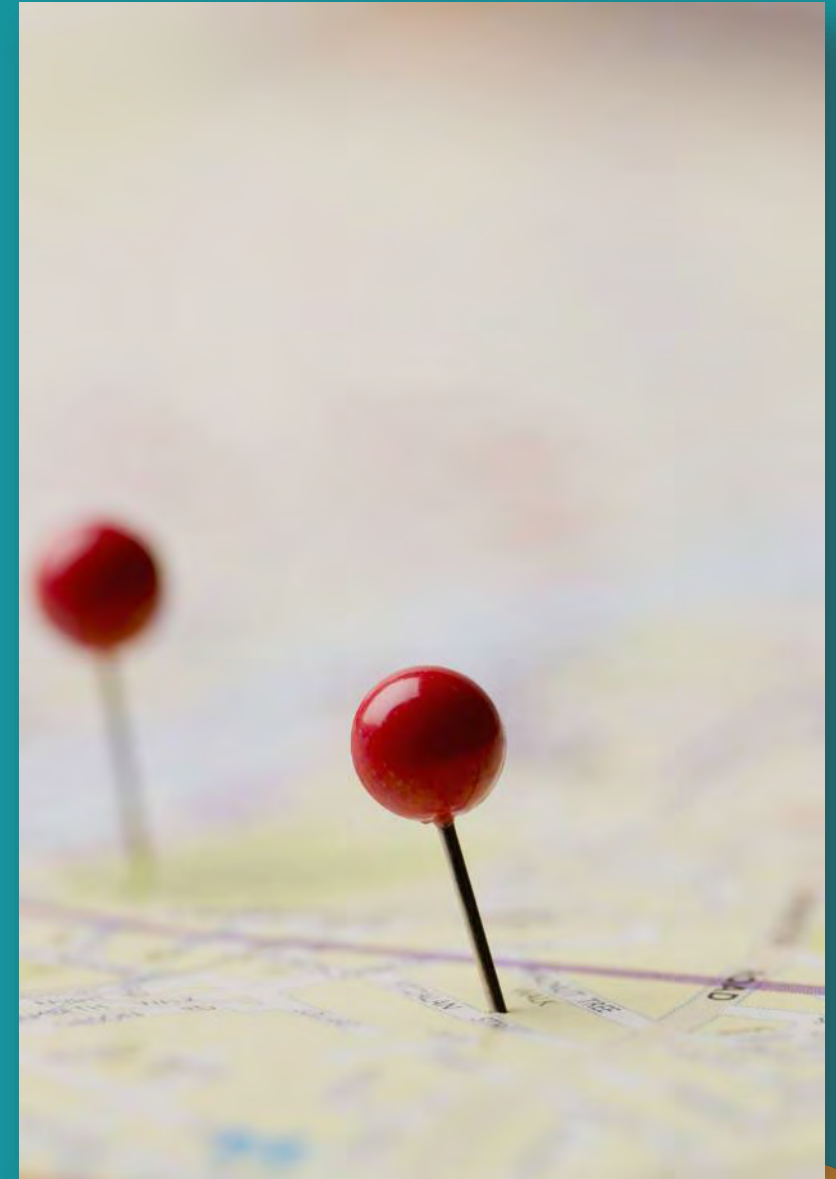
# PRELIMINARY INVENTORY MAPPING





# [Preliminary Inventory Mapping]

- Task 4: Section II – Inventory and Analysis (DOS Task 8)
- Preliminary Draft Mapping:
  - Waterfront Revitalization Area Boundary (WRA)
  - Existing Zoning
  - Existing Land Uses
  - Sensitive Environmental Features
  - Parks, Trails and Conserved Lands
  - Community and Historic Resources



# [Preliminary Inventory Mapping]

## Study Area (Waterfront Revitalization Area)

- Village of Saranac Lake Municipal Boundary
- Village Covers Over 2000 Acres
- Within Essex & Franklin County
- Within the Towns of St. Elba, Saranac Lake and Harrietstown
- Major Routes include
  - Route 3/River Street
  - Route 86/Lake Flower Ave/Broadway

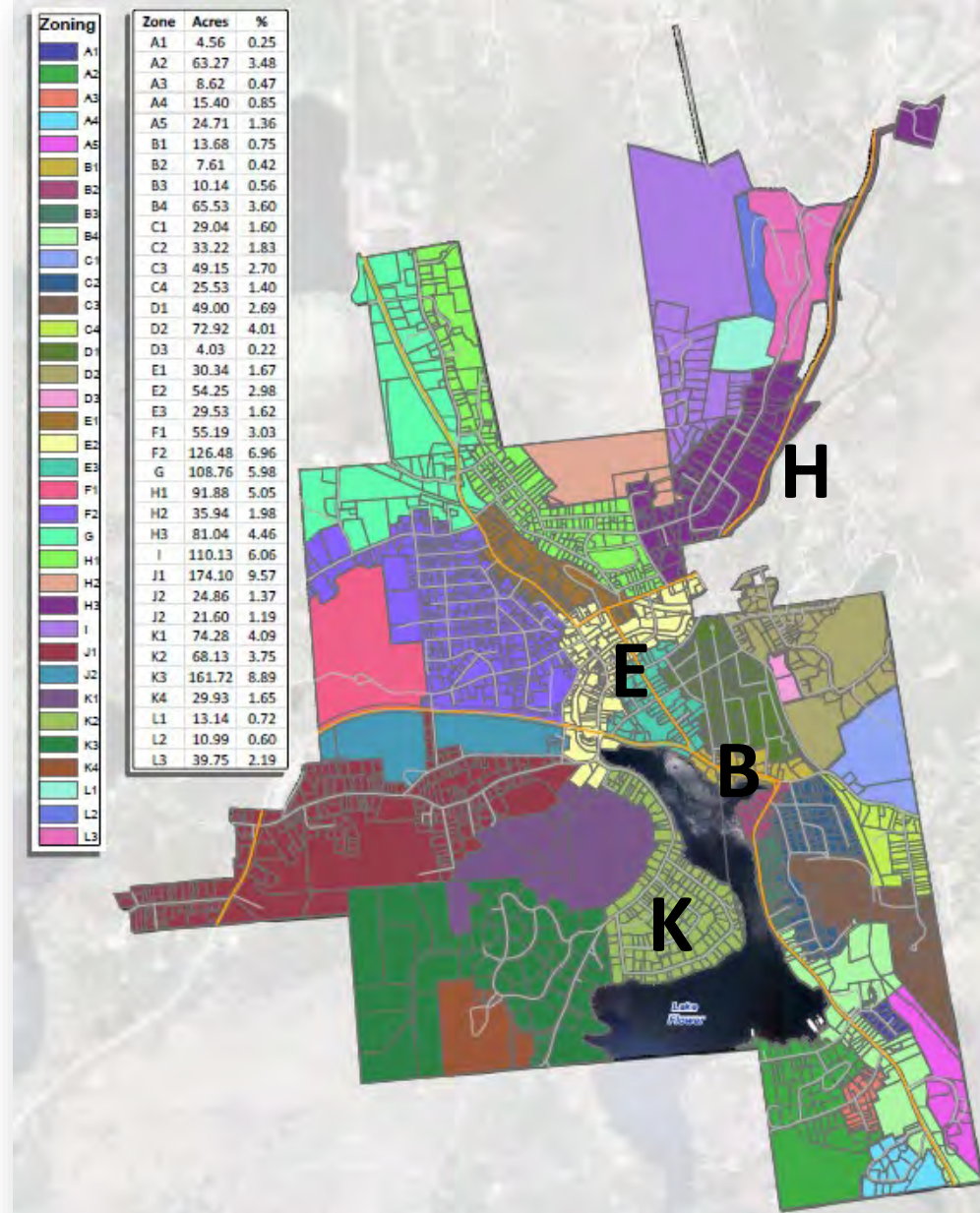




# [Preliminary Inventory Mapping]

## Existing Zoning

- 35 Zoning Districts
- Majority of Waterfront within:
  - Downtown Commercial (E2, E3)
  - Commercial Gateway (B1, B2, B3, B4)
  - Single Family Residential (K2)
- Saranac River (E2, H3)
  - Downtown Commercial (E2)
  - Residential (H3)

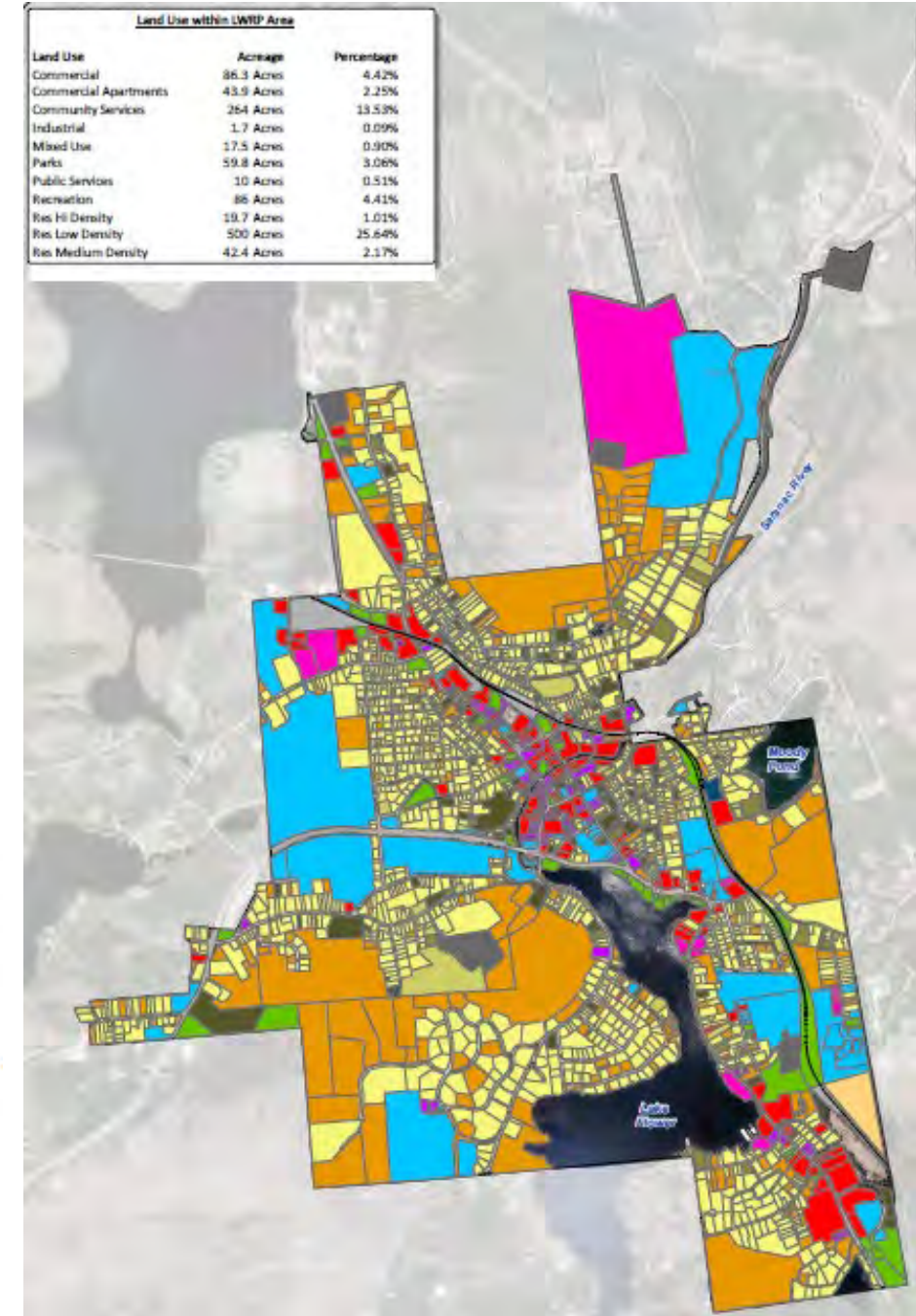


# Preliminary Inventory Mapping

## Existing Land Uses

- Primarily Residential
- Community Services
- Vacant Lands
- Commercial
- Recreation

### Legend





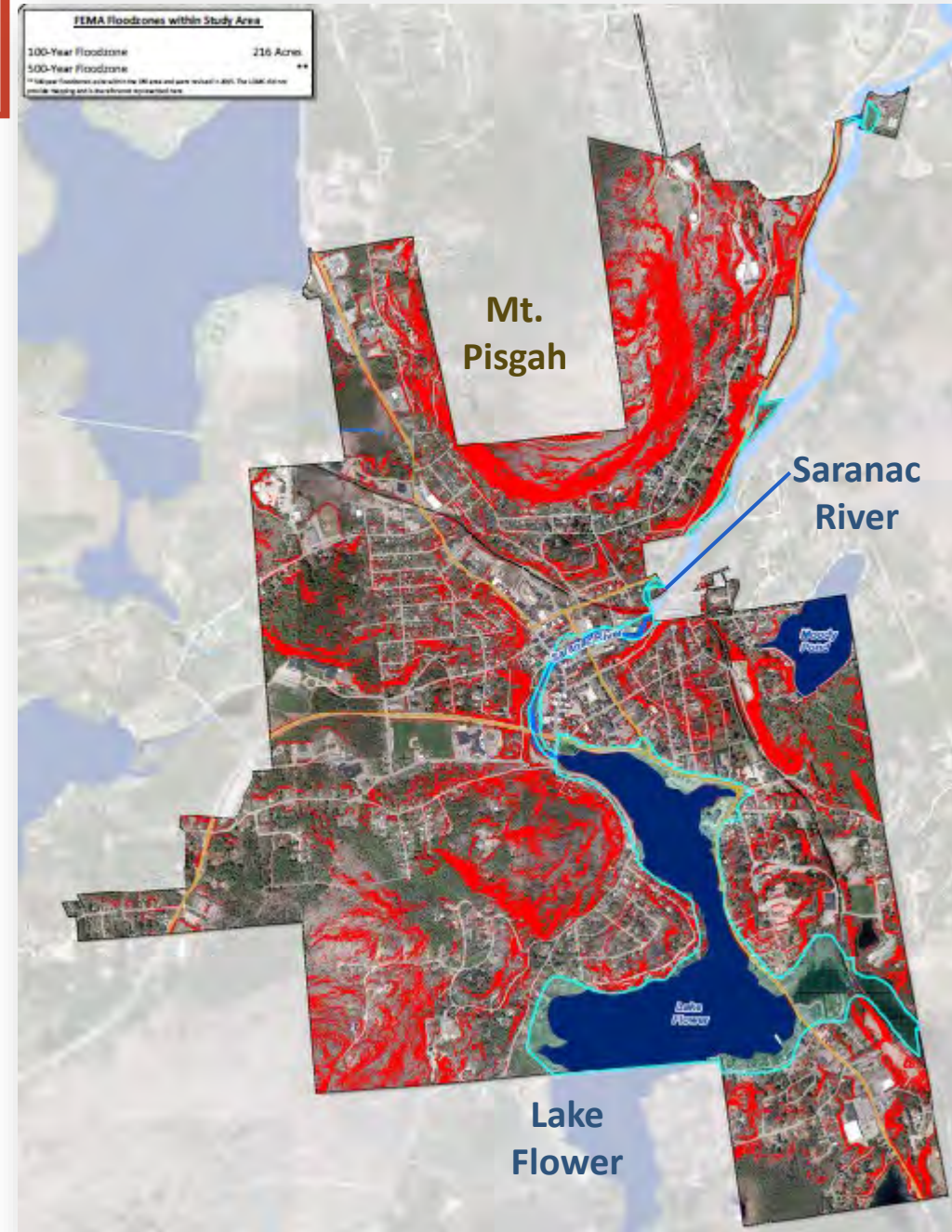
# Preliminary Inventory Mapping

## Sensitive Environmental Features

- Steep Slopes:
  - Mount Pisgah
  - West Side of Lake Flower
- 100-year Flood Zone (216 Acres)
- Federal Wetlands:
  - Lake Flower
  - Saranac River

### Legend

-  Steep Slopes (>15%)
-  100 year Floodzone
- NWI Wetlands**
  -  Riverine Area
  -  Lake Flower





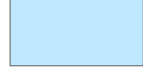



# [Preliminary Inventory Mapping]

## Parks, Trails and Conserved Lands

- Key Parks:
  - Riverside, Riverfront, Prescott
  - State Boat Launch
  - Baldwin Park
  - Lake Colby Beach
- Mt. Pisgah Ski Center
- Saranac Lake Civic Center
- Riverwalk

### Legend

-  LWRP Boundary
-  Public Parks
-  Private Parks
-  Indoor Recreation
-  Outdoor Recreation
-  Riverwalk





# [Preliminary Inventory Mapping]

## Community and Historic Resources

- Historic Districts:
  - NY Central Railroad
  - Berkley Square
  - Church Street
  - Highland Park
  - Cottage Row
- Over 50 Historic Sites
  - Cure Cottages

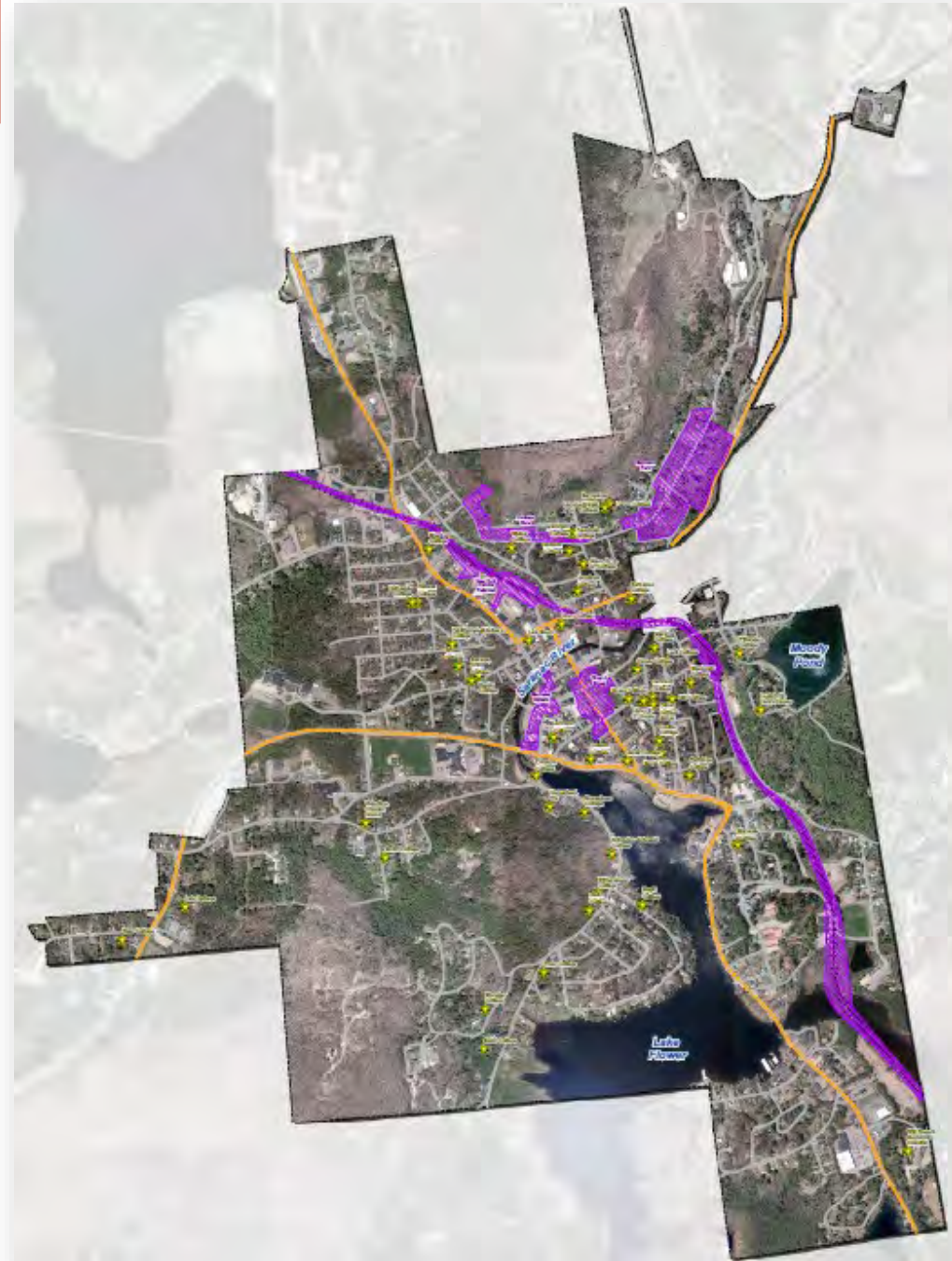
### Legend



Historic Buildings



Historic Districts



# VISIONING EXERCISE





# [Visioning Exercise]

## LWRP Vision Overview

- The LWRP expresses a vision for the WRA and provides the means to achieve that vision
- A vision is a desired future



# [Visioning Exercise]

## Key Challenges (From Previous WAC Input)

- Invasive species
- Need for riparian buffers/shoreline protection
- Climate change/flood resiliency
- Water quality impacts (pollution, road salt, geese)
- Pedestrian connections on River Street
- Educating visitors and residents
- Need for additional kayak access

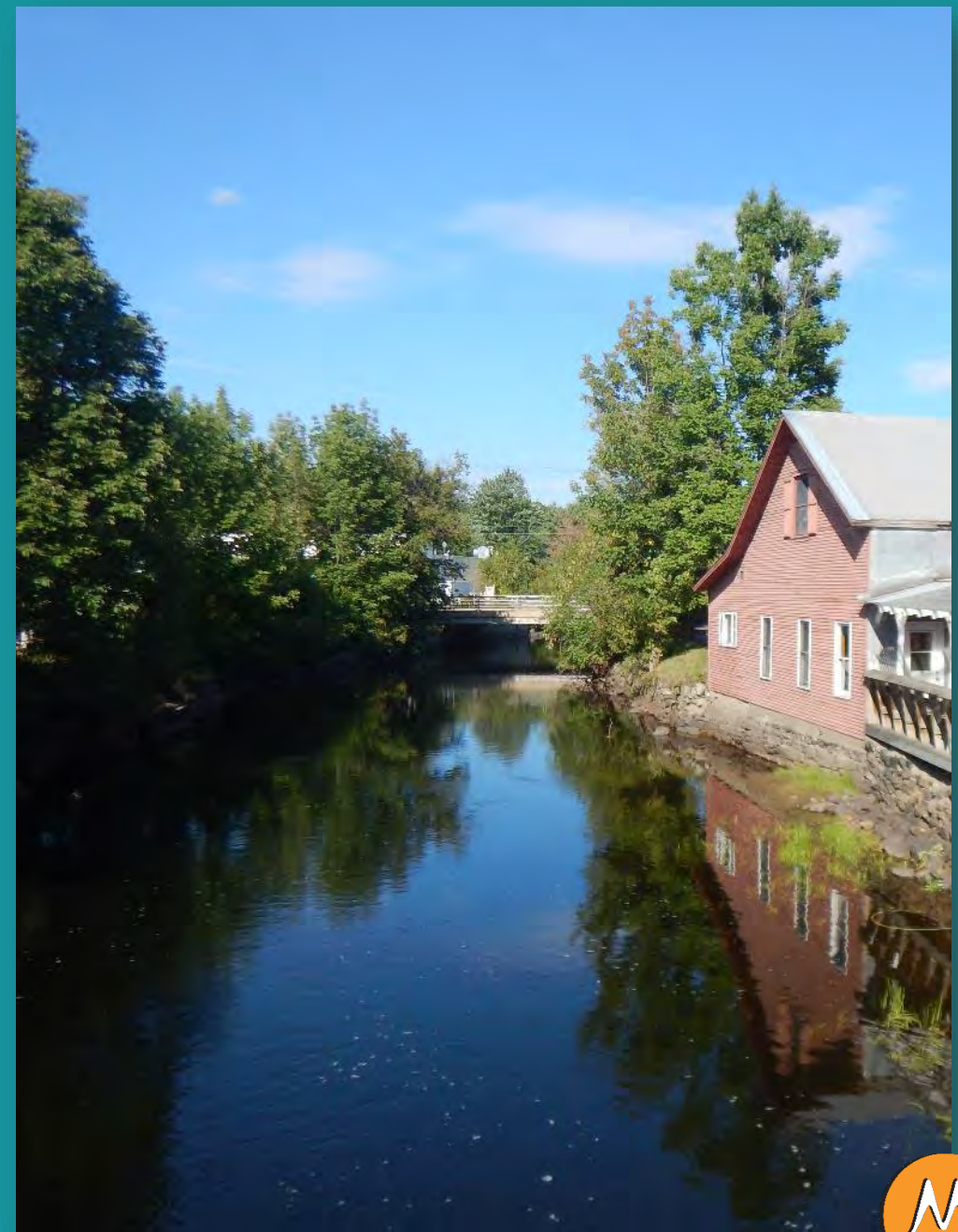




# [Visioning Exercise]

## Key Opportunities (From Previous WAC Input)

- Water quality improvements through green infrastructure, partnerships for Road Salt reduction
- Connections (Rail-trail access, Lake Colby, signage for canoe carry)
- Public Parks Improvement including Lake Colby Beach
- Interpretation along trails (wildlife, cultural heritage)



# [Visioning Exercise]

Using 2-3 words, describe what you see for the future of the waterfront?







# PUBLIC ENGAGEMENT





# [Public Engagement]

## Community Outreach Plan

- Identifies engagement activities
- 2 Public Workshops
- Online Community Survey
- Stakeholder Group Meetings
- ArcGIS Story Map
- Village Board Updates





# [Public Engagement]

## Public Workshop #1

- Tentatively April 2022
- In Person & Virtual Component
- Project Overview, WRA Boundary, Inventory Mapping
- Visioning, Needs & Opportunities Exercises
- Interactive Polling



# NEXT STEPS





# [Next Steps]

- Schedule WAC Meeting #3
- Schedule Public Workshop #1
- Prepare Online Survey
- Identify Stakeholders/Schedule Meetings
  - With Assistance from WAC
- Finalize Community Outreach Plan
- Continue Inventory and Analysis



**THANK YOU!**

