



Village of Saranac Lake

39 Main Street, Suite 9 Saranac Lake, NY 12983-2294

Phone: (518) 891 - 4150

Fax: (518) 891 - 1324

Web Site: www.saranaclakeny.gov

INVITATION TO BID

SEALED BIDS ARE HEREBY SOLICITED UNDER SECTION 103 OF THE GENERAL MUNICIPAL LAW BY THE VILLAGE BOARD OF THE VILLAGE OF SARANAC LAKE FOR THE ELECTRICAL UPGRADES (600 Amp Electrical Services) AT THE DPW AND CENTRAL GARAGE AT 95 VAN BUREN STREET

INSTRUCTIONS TO BIDDERS

Bids are to be addressed to the Village Clerk. The sealed envelope must be plainly marked with the project name and the date of bid opening.

Bids must be detailed categorically in the same order as the specifications listed below.

The bidder must be a duly authorized representative of the company.

Any proposed modifications to products or services must be clearly described in the bid.

A non-collusion statement must accompany the bid.

The Village reserves the right to reject any or all bids, or the apparent low bid, if it determines such action to be in the best interest of the Village.

All state and federal taxes will be excluded. Tax exemption certificates will be furnished to the successful bidder.

PROJECT DESCRIPTION

The work consists of furnishing all labor, equipment, and materials necessary for the installation of electrical upgrades for the existing garage buildings on Van Buren Street, including:

- (1) 600 amp, 3-phase main breaker distribution panel with weatherproof enclosure
- (1) 400 amp, 3-phase I-Line circuit breaker (main garage)
- (1) 200 amp, 3-phase I-Line circuit breaker (rear garage)
- (1) 6 space circuit breaker adapter for future generator 120 volt heaters
- Prepared spaces for future circuit breakers
- (1) 200 amp, 3-phase main breaker panel bolt on top with hinged cover
- (1) 600 amp Asco, 3 phase, service-rated automatic transfer switch with cabinet heater, exercise clock
- CT metering cabinet (36"x36"x12") with required backplate
- THHN Copper wire (approx. 2,480' of 350Kcm, 120' of 4/0, 100' of #3)
- Ground rods, clamps, and bare ground wire
- 3" Schedule 80 PVC conduit (1,000' with fittings, sweeps, and cement)
- Weatherproof wiring trough (36"x10"x10")
- Miscellaneous electrical parts (Unistrut, bushings, connectors, etc.)
- Electrical inspection fees

- Labor: Three electricians for approximately 10 days, including removal of old panels, installation of new equipment, and coordination with National Grid and inspector

- Alternate - Supply 150KW Diesel Generator w/ alarm/heater/cold weather package

Notes:

- The proposed transfer switch is compatible with the existing 50Kw generator.
- Trenching and backfilling to be performed by others (Village responsibility).
- National Grid costs (line removal, transformer work) are excluded.
- The Village will trench and install 3" conduit for Slick Communications

Total Estimated Cost (per contractor's estimate):

BID FORM

ITEM	DESCRIPTION	QTY	UNIT BID PRICE	AMOUNT BID
1	600 amp, 3-phase distribution panel package		\$ _____	\$ _____
2	600 amp automatic transfer switch		\$ _____	\$ _____
3	CT Metering Cabinet (36"x36"x12")		\$ _____	\$ _____
4	Copper wire (all sizes listed below)		\$ _____	\$ _____
5	Conduit (3" Sch. 80 PVC with fittings)		\$ _____	\$ _____
6	Misc. parts, troughs, ground rods, clamps		\$ _____	\$ _____
7	Electrical inspection	1	\$ _____	\$ _____
8	Labor –		\$ _____	\$ _____
Alternate #1	Supply 150KW Diesel Generator w/ alarm/heater/cold weather package		\$ _____	\$ _____

TOTAL BID: \$ _____

BID OPENING

Sealed bids will be opened at 2:30 PM on September 16, 2025 in the Village Office Board Room, 39 Main Street, 2nd Floor, Suite 9, Saranac Lake, NY.

NON-COLLUSIVE BIDDING CERTIFICATION

By submission of this bid, each bidder and each person signing on behalf of any bidder certifies, and in the case of a joint bid, each party hereto certifies as to its own organization under penalty of perjury, that to the best of his knowledge and belief:

1 - The prices in this bid have been arrived at independently without collusion, consultation, communications, or agreement, for the purpose of restricting competition as to any matter relating to such prices with any other bidder or competitor.

2 - Unless otherwise required by law, the prices which have been quoted in this bid have not been knowingly disclosed by the bidder prior to opening, directly or indirectly, to any other bidder or to any competitor; and

3 - No attempt has been made or will be made by the bidder to induce any other person, partnership or corporation to submit or not to submit a bid for the purpose of restricting competition.

WE, THE UNDERSIGNED, PROPOSE TO FURNISH ALL MATERIALS CALLED FOR IN FULL ACCORDANCE WITH THE SPECIFICATIONS AND INSTRUCTIONS IN THE ATTACHED BID, OR PROPOSAL, AND AGREE TO ALL CONDITIONS THEREIN.

FIRM: _____

ADDRESS: _____

PHONE NUMBER: _____

SIGNED BY: _____

TITLE: _____



Memorandum

To: File

From: B. Pettengill

Date: 05/21/2025

Subject: Village of Saranac Lake

95 Van Buren St., Saranac Lake, NY 12983

WR# 31145784

National Grid (Company) has reviewed and accepts the subject Customer's submittal for this project as noted below in accordance with ESB 750-2022. Please note that references to National Electrical Code sections pertain to the latest edition.

Service Equipment:

The ASCO Power Technologies, 120/208V, 3PH, 4 wire, service entrance rated Automatic Transfer Switch type 300 series equipped with an 600A 3 pole, 4 wire, main circuit breaker, acting as the service entrance over current device for subject project is accepted with the following comments:

The Customer's service equipment shall be adequate to withstand and interrupt the maximum fault current available as required by the National Electrical Code, Sections 110.9 and 110.10.

The maximum fault current available at the Company's transformer secondary is 41,700 rms symmetrical amperes at 208 volts for Customer service equipment to withstand bracing.

Single Line:

The electrical single-line diagram from Electrician: Rick Stephenson is accepted as submitted (with the following comments).

Metering:

The Company's Meter & Test Department will determine the exact location of all electric meters at the site.

Electrical contractors must contact the Company's Meter & Test Department before installing the Customer's C.T. cabinet and Company's meter channels for exact locations.

The C.T. cabinet (36 inch high x 36 inch wide x 10 inch deep) shall be furnished and shall be installed by the Customer for 400A through 800A projects; see Figure 7.4.1-1 in ESB 750-2022 for specifications.

The Customer's conduit shall enter one side of the Customer's C.T. cabinet and out the other side horizontally; see Figure 7.4.1-1 in ESB 750-2022.

Where two conduits are necessary for paralleled service conductors on the load side of the metering C.T. cabinet, they shall terminate at one location. Taps or splices are not permitted within a metering C.T. cabinet; see Sections 7.3 and 7.4.1 of ESB 750-2022.

The conduit between the C.T. cabinet and meter trough shall be continuous 1-1/2" rigid galvanized steel.

The meter socket cover shall have a hasp provision for the Company's seal or lock; see Table 7.2-2 in ESB 750-2022.

In accordance with Section 7.1.2.1 of ESB 750-2022, a clear working space of at least 48 inches shall be provided in front of indoor meters and have a minimum headroom of 78 inches. However, if the meter is spotted outdoors, the four-foot dimension may be reduced to 3 foot to the property line for an outdoor metering installation; see Section 7.1.3.2 in ESB 750-2022.

In accordance with Section 7.1.2.2 of ESB 750-2022, a clear working space of at least three feet shall be provided and maintained in front of the meter socket enclosure for outdoor installations.

Metered and unmetered service conductors shall not be installed in the same raceway, auxiliary gutters and/or pull boxes. Raceways, auxiliary gutters and pull boxes containing unmetered service conductors shall have provisions to allow for sealing by the Company. See ESB 750-2022, Sections 4.1.7, 5.1.4, and 7.1.5.

Transfer Switches & Standby Generators:

Time Delay Emergency-to-Normal is recommended to be fifteen (15) minutes, but no less than two (2) minutes to allow for supply system stabilization upon system restoration.

Time Delay Normal-to-Emergency shall be within 1 to 2 minutes. This allows for the automatic reclose of the distribution circuit serving the Customer. See Section 10.4 of ESB 750-2022. The Company will review an Authority Having Jurisdiction's requirement for a faster transfer to Emergency; the Company may accept a 3 seconds setting.

Undervoltage should be set at 85% or lower to allow for the nominal voltage range as well as voltage flicker on a distribution circuit and customer conductors.

Overvoltage should be set at 110% or higher to allow for the nominal voltage range.

A copy of a completed Form G submitted by the commercial Customer to Distribution Design shall be sent to the Field Engineering group before this project may be energized.

<Emergency Generator – Permanent or being changed, applicable to Commercial & Industrial Customers>

Emergency and Standby Generators shall be installed and operated per NMPC, PSC No. 220, Service Class 7 (SC-7), and ESB 750-2022 Sections 11.1 and 11.2 according to the following:

- A. The Customer shall complete a Form G under the special provisions of the applicable service classification for all generators (Emergency or Standby) on the premises. The Customer shall state their intended use of the OSG facilities on the Form G in the blank spaces provided for special conditions such as: "Customer agrees that the (Emergency or Standby – as applicable) OSG described herein will be used solely in conformance with the provision of SC-7, Specific Section 4.H of PSC No. 220 – Electricity and that all terms and conditions of the Tariff will be adhered to in the operation of the OSG."
- B. A statement from the Customer either in their proposal letter or on their design drawings is needed that states "The Emergency (or Standby)

- Power System OSG is on a unitary tract of land, comprising the premises and is for use exclusively during interruption of Electric Service.”
- C. The Customer needs to specify conditions in their proposal when load on the premises may be served by Emergency or Standby Power System OSG while Electric Service is being provided by the Company to the premises for the period of time as required by statute or regulation, or in the absence of a statutory or regulatory requirement, such times so as to adequately test such systems, not exceed 10 hours per month or as otherwise agreed to by the Company in Form G, and for periods of time called by the NYISO for EDRP or ICAP (UCAP).
 - D. The Customer shall maintain an operating log for each Emergency or Standby Power System OSG indicating the date, time, hours, and purpose of each operation of each such facility. This log shall be made available to the Company upon request. If the Customer fails to maintain this log or to provide it to the Company on request, the Company shall be permitted to bill the Customer for those amounts of Electric Service which the Company reasonably estimated were inappropriately supplied by the Customer’s generator during times when Electric Service from the Company was available to the Customer and to require the Customer to install OSG meter(s) on all of its generators on the premises within thirty (30) days of receipt of written notice from the Company issued under the tariff. Details of the metering requirements will be specified to the Customer upon such notice.

General Installation:

The incoming service conductors must conform to Section 310.15(B)(2) and 310.15(B)(2)(a) of the National Electrical Code.

The service entrance conductors in parallel shall be in accordance with Section 310.4 of the National Electrical Code.

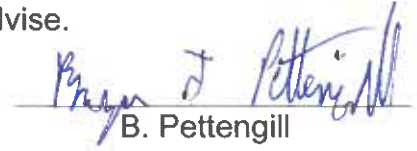
An overhead service drop may be provided to supply equipment rated 800 amperes or less. Not more than two sets of service entrance conductors shall be connected to each service drop. See Section 4.2.1 in ESB 750-2022.

Cluster-mounted transformers are recommended where the primary supply voltage will be less than 15kV, the required transformation does not exceed 3-100kVA transformers for 208Y/120 volts or 3-167kVA transformers for 480Y/277 volts and aesthetics are not of prime concern. See Section 9.2.1, ESB 750-2022.

The underground service conduit shall conform to Section 4.5.3, ESB 750-2010.

This completes our comments on this portion of the above-mentioned project.

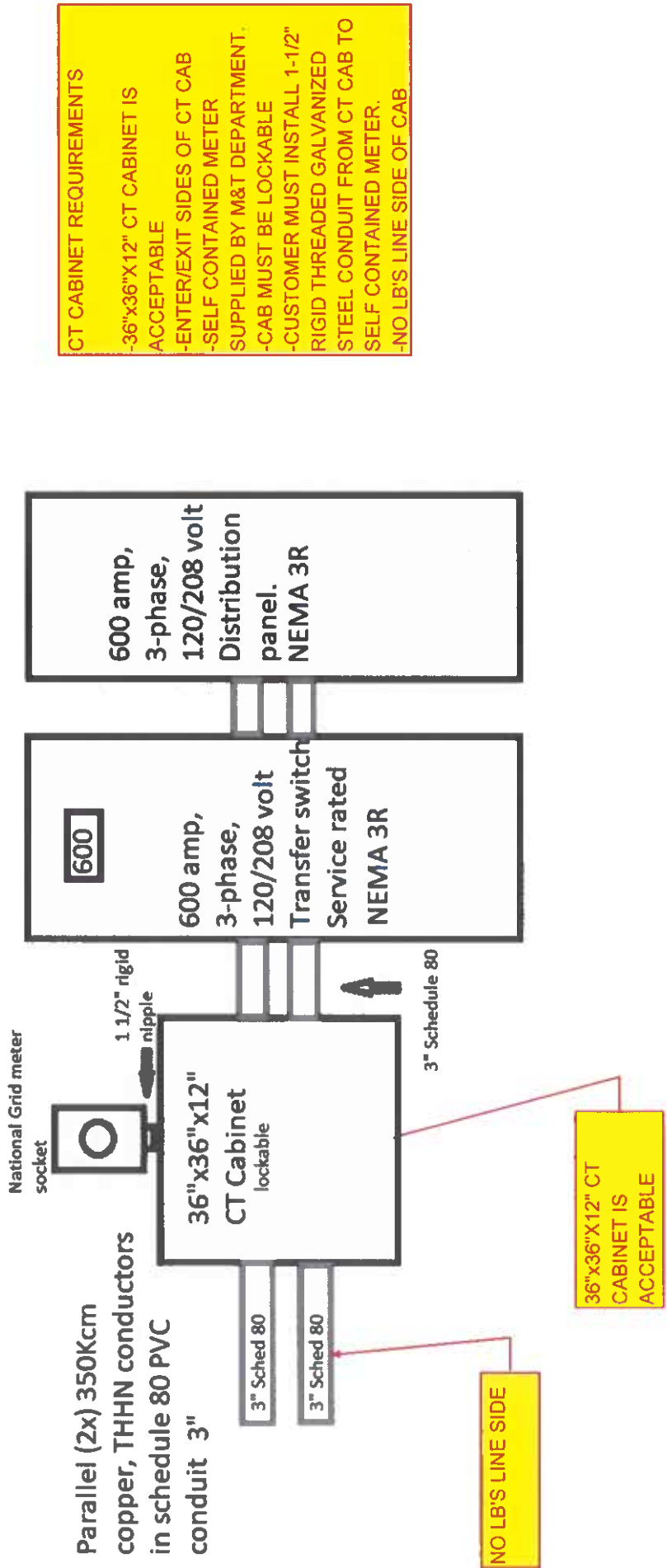
If any additional information is needed, please advise.



B. Pettengill

xc: B. Gauthier, T. Caswell, M. Ellis

Village of Saranac Lake Municipal Garage.
95 Van Buren Street
ESR: 31145784



APPROVED
Eric J. Peterson 5/21/25
SIGNATURE / DATE

The ASCO Service Entrance Power Transfer Switch combines automatic power switching with the disconnecting, grounding, and bonding required for use as service entrance equipment. It meets all National Electrical Code® requirements for service entrance use.



ASCO SERIES 300
SE Rated 800 amperes Type 1 enclosure



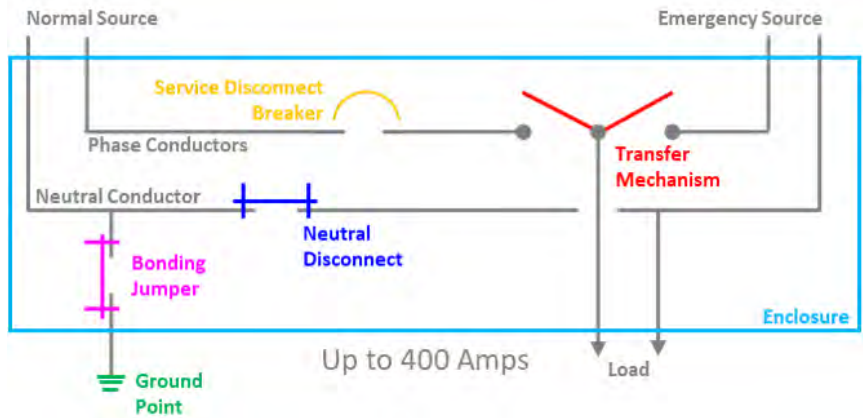
ASCO SERIES 300
SE Rated 200 amperes in Type 3R enclosure

Product Features:

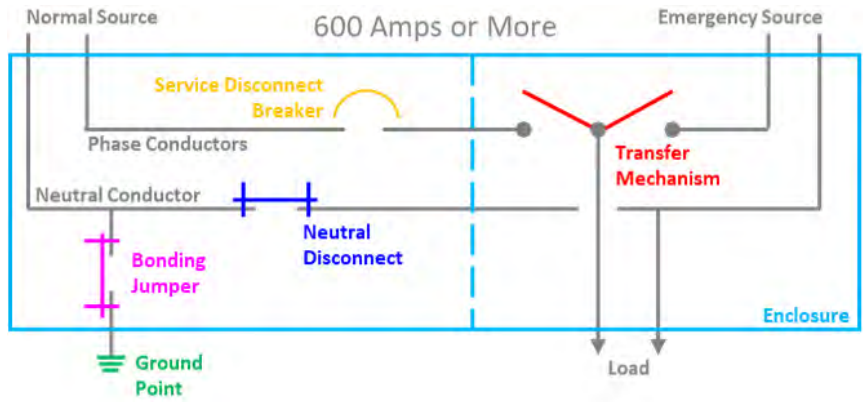
- Sizes available from 70 - 3000 amps, 600 VAC, 50 or 60 Hz, single or 3-phase
- 70 - 400 Ampere listed to UL 1008
- 600 - 3000 Ampere listed to UL 891
- Automatic Transfer Switch is listed to UL 1008 for total system loads
- Silver plated copper ground and neutral bus with solderless screw type terminals
- Ground fault trip protection provided on 1000 amps and above
- Available with solid or switched neutral
- Line side breaker barriers available in compliance with NEC2020

Construction

Products 400 amperes or less, utilize a single enclosure, including a service disconnect circuit breaker, as well as the transfer switch and grounding and bonding provisions.



Products 600 amperes and above provide a service equipment section containing the service disconnect circuit breaker as well as grounding and bonding provisions. A second section contains the power transfer switch.



For additional detail, see the [interactive 3-D view](#) in the [ASCO Digital Hub](#).

Order Information

PART NUMBER FOR WORK
ORDER 31145784 IS -J03AUSB30600CGM

To order an ASCO SERIES 300SE Power Transfer Switch, complete the following catalog number:

XX	+	XXXX	+	X	+	X	+	XXXX	+	X	+	XX	+	X
Frame		Product Type		Neutral Code		Phase Poles		Amperes Continous Rating		Voltage Code		Controller Code		Enclosure
D = 70 - 225 Amp		03AUS = Automatic		A = Solid Neutral		2		0070, 0100, 0150, 0200, 0225 ³ , 0250 ³ , 0400, 0600,		C = 208 D = 220 E = 230 F = 240 H = 380 J = 400 K = 415 L = 440 M = 460 N = 480 P = 550 Q = 575 R = 600		G = No Optional Accessories GX = Optional Accessories		C = Type 1 (Standard) M = Type 3R Secure Double Door N = Type 4 ¹ Secure Double Door Q = Type 12 ¹ Secure Double Door V = Type 4X ^{4,5} Secure Double Door 316 SS
J = 150 - 600 Amp 150A - 225A; 3ADUS/3NDUS Only		03NUS = Non-Automatic		B = Switched Neutral		3		0800, 1000, 1200, 1600, 2000 2500, 3000						
H = 800 - 1200 Amp		3ADUS = Automatic Delayed Transition												
G = 1600 - 3000 Amp		3NDUS = Non-Automatic, Delayed Transition												

- Notes:
1. Available for 70-1600 amperes, use type 3R for 2000-3000 ampere applications.

2. A solid neutral is provided as standard.

3. 200, 225 ampere rated switches suitable for use with copper cable only. Refer to paragraph 310.15 of the NEC for additional information.

4. Type 316 stainless steel is the standard. It provides an improved reduction in corrosion of salt and some chemicals. It is the preferred choice for marine environments.

5. Available only on switches rated 70 - 1600 amperes.

Specifications

ASCO SERIES 300SE Power Transfer Switch Dimensions and Shipping Weights

UL Type 1 Enclosure⁴

Switch Rating Amps	Phase Poles	Neutral Code	Dimensions, In. (mm)			Approx. Shipping Weight Lb. (kg)
			Width	Height	Depth	
70, 100, 150, 200, 225	2	A	36 (914)	48 (1219)	13 (330)	400 (185)
	2	B	36 (914)	48 (1219)	13 (330)	410 (189)
	3	A	36 (914)	48 (1219)	13 (330)	410 (189)
	3	B	36 (914)	48 (1219)	13 (330)	430 (198)
150, 200, 225, SERIES 3ADUS/3NDUS Only	2	A	36 (914)	48 (1219)	13 (330)	400 (185)
	2	B	36 (914)	48 (1219)	13 (330)	408 (188)
	3	A	36 (914)	48 (1219)	13 (330)	408 (188)
	3	B	36 (914)	48 (1219)	13 (330)	420 (193)
	2	A	42 (1067)	48 (1219)	15.5 (394)	420 (193)
	2	B	42 (1067)	48 (1219)	15.5 (394)	430 (198)
	3	A	42 (1067)	48 (1219)	15.5 (394)	430 (198)
	3	B	42 (1067)	48 (1219)	15.5 (394)	450 (207)
6001	2	A	38 (965)	91 (2311)	28 (711)	860 (396)
	2	B	38 (965)	91 (2311)	28 (711)	870 (401)
	3	A	38 (965)	91 (2311)	28 (711)	870 (401)
	3	B	38 (965)	91 (2311)	28 (711)	880 (405)
	2	A	38 (965)	91 (2311)	28 (711)	1460 (673)
	2	B	38 (965)	91 (2311)	28 (711)	1470 (677)
	3	A	38 (965)	91 (2311)	28 (711)	1470 (677)
	3	B	38 (965)	91 (2311)	28 (711)	1480 (682)
8001	2	A	38 (965)	91 (2311)	48 (1218)	1460 (673)
	2	B	38 (965)	91 (2311)	48 (1218)	1470 (677)
	3	A	38 (965)	91 (2311)	48 (1218)	1470 (677)
	3	B	38 (965)	91 (2311)	48 (1218)	1480 (682)
10001, 12001	2	A	38 (965)	91 (2311)	48 (1218)	1460 (673)
	2	B	38 (965)	91 (2311)	48 (1218)	1470 (677)
	3	A	38 (965)	91 (2311)	48 (1218)	1470 (677)
	3	B	38 (965)	91 (2311)	48 (1218)	1480 (682)
16001, 20001	3	A	38 (965)	91 (2311)	48 (1218)	1580 (727)
	3	B	38 (965)	91 (2311)	48 (1218)	1680 (773)
25001, 30001	3	A	38 (965)	91 (2311)	72 (1829)	4590 (2111)
	3	B	38 (965)	91 (2311)	72 (1829)	4690 (2157)

- Notes:
1. Unit is designed for top and bottom cable entry for all services and load.

2. Enclosures for 600 – 3000 amps are freestanding.

3. A space heater accessory 44G is required with all service entrance (Type 3R) switches to help reduce condensation and protect the circuit breaker. It is recommended when environmental enclosures (Type 4, 12) are ordered for installation outdoors. See Optional Accessories page for space heater options (acc. 44G).

4. Dimensional data is approximate and subject to change. Certified dimensions available upon request.

SERIES 300SE External Power Connections
Sizes UL-Listed Solderless Screw-Type Terminals

Switch Rating	Ranges of AL-CU Wire Sizes
70, 100, 150, 200 ² , 225 ²	One #14 to 4/0 AWG
150 ³ , 200 ³ , 225 ³ , 250, 400	One #4 AWG to 600 MCM Two 1/0 to 250 MCM
600	Two 1/0 to 600 MCM
800, 1000, 1200	Four 1/0 to 600 MCM
1600, 2000	Six 1/0 to 600 MCM
2500	Twelve 3/0 to 750 MCM
3000	Twelve 3/0 to 750 MCM

- Notes:
1. All SERIES 300 switches default to a solid neutral assembly unless a switched neutral is specified. If no neutral is required, order as solid neutral and left unwired.

2. 200 and 225 ampere rated switches for use with copper cable only. Refer to paragraph 310.15 of the NEC for all additional information.

3. J 150-225 ampere for SERIES 3ADUS/3NDUS only.

4. Use wire rated 75 degrees minimum for all power connections.

5. Refer to the outline drawing for maximum power cable connections for circuit breaker.

UL Type 3R Enclosure⁴

Switch Rating Amps	Phase Poles	Neutral Code	Dimensions, In. (mm)			Approx. Shipping Weight Lb. (kg)
			Width	Height	Depth	
70, 100, 150, 200, 225	2	A	36 (914)	48 (1219)	16 (406)	500 (232)
	2	B	36 (914)	48 (1219)	16 (406)	520 (241)
	3	A	36 (914)	48 (1219)	16 (406)	520 (241)
	3	B	36 (914)	48 (1219)	16 (406)	530 (246)
150, 200, 225, SERIES 3ADUS/3NDUS Only	2	A	41 (1041)	95.5 (2424)	33 (838)	500 (232)
	2	B	41 (1041)	95.5 (2424)	33 (838)	520 (241)
	3	A	41 (1041)	95.5 (2424)	33 (838)	520 (241)
	3	B	41 (1041)	95.5 (2424)	33 (838)	530 (246)
	2	A	42 (1067)	48 (1219)	18 (487)	500 (232)
	2	B	42 (1067)	48 (1219)	18 (487)	520 (241)
	3	A	42 (1067)	48 (1219)	18 (487)	520 (241)
	3	B	42 (1067)	48 (1219)	18 (487)	530 (246)
6001	2	A	41 (1041)	95.5 (2425)	33 (838)	1200 (555)
	2	B	41 (1041)	95.5 (2425)	33 (838)	1220 (564)
	3	A	41 (1041)	95.5 (2425)	33 (838)	1220 (564)
	3	B	41 (1041)	95.5 (2425)	33 (838)	1240 (574)
	2	A	38 (965)	91 (2311)	28 (711)	1520 (703)
	2	B	38 (965)	91 (2311)	28 (711)	1540 (712)
	3	A	38 (965)	91 (2311)	28 (711)	1540 (712)
	3	B	38 (965)	91 (2311)	28 (711)	1580 (731)
10001, 12001	2	A	38 (965)	91 (2311)	48 (1218)	1520 (703)
	2	B	38 (965)	91 (2311)	48 (1218)	1540 (712)
	3	A	38 (965)	91 (2311)	48 (1218)	1540 (712)
	3	B	38 (965)	91 (2311)	48 (1218)	1580 (731)
16001, 20001	3	A	38 (965)	91 (2311)	48 (1218)	2200 (1018)
	3	B	38 (965)	91 (2311)	48 (1218)	2240 (1036)
25001, 30001	3	A	38 (965)	91 (2311)	72 (1829)	5280 (2479)
	3	B	38 (965)	91 (2311)	72 (1829)	5380 (2475)

Extended Warranties for SERIES 300SE Transfer Switches
(3AUS/3NUS/3ADUS/3NDUS)

Description
1 Year Extension (Total of 3 Years)
2 Year Extension (Total of 4 Years)
3 Year Extension (Total of 5 Years)

- Notes:
1. Standard warranty is (24) months, 2 years from date of shipment, extended warranty is in addition to the two years, for a total of 3, 4 or 5 years, except where the warranty period for the circuit breaker shall be limited to 24 months from date of shipment from ASCO.

2. Refer to Publication 3223 for warranty terms and conditions.

SERIES 300SE AIC Breaker Rating¹

Switch Rating	AIC Rating (kA)	Voltage
70, 100, 150, 200, 225	85	480
150, 200, 225 SERIES 3ADUS/3NDUS Only	85	480
250, 400, 600	85	480
800	65	480
1000, 1200	50	480
1600, 2000	65	480
2500, 3000	100	480

Prepared By:

Hunter Sattler
23 Adirondack St
Saranac Lake, NY 12983
hunter@cedsaranaclake.com
D:518-891-2402

Proposal Name: Village of Saranac Lake Garage

Quote Name: Village of Saranac Lake Garage

Proposal Number: P-250422-5199321

Quote Number: Q-5909946

Quote Date: 04/22/2025

Through Addenda Number: 0

Sales Representative: Allison Merrell

Conditions of Sale

Except as otherwise provided below, this Quotation is subject to Coordinated Project Terms. See <https://www.schneider-electric.us/en/download/document/0100PL0043>

Notwithstanding any provision to the contrary in the referenced Coordinated Project Terms or any other documentation provided in connection with this proposal, this quote is valid for 30 days. Quoted lead times are approximate and subject to change.

Schneider Electric reserves the right to amend, withdraw or otherwise alter this submission without penalty or charge as a result of any event beyond its control arising from or due to the current Covid-19 epidemic or events subsequent to this epidemic / pandemic including changes in laws, regulations, by laws or direction from a competent authority.

Pricing

NOTE: ALL PRICES ARE QUOTED NET

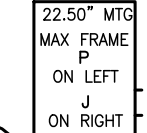
TABLE OF CONTENTS

Panelboards

This Section Contains Products: Panelboards

Seq #	Qty	Product Description
1	1	Designation : MDP Product Details: 1-I-Line MB Panel (INTERIOR)-I-Line Panelboard Consisting of 208Y/120V 3Ph 4W 60Hz SCCR: 22kA Fully Rated Single Main: 600A/3P MG Circuit Breaker Incoming Conductors: 1 - (3) 3/0 - 500 kcmil AL Ground Bar Bus: 600A Rated Copper: Tin Plated 45" of Mounting Inches Type 3R/5/12Box: 59H x 42W x 12.95D Incoming: Bottom Trim w/ Box Box Cat No: HC4259WP Ref. Drawing PBA412 Type: HCP Feeders: 1 - 400A/3P LA 2 - 100A/3P BD Prepared Space 6 - 20A/1P QO-VH Prepared Space 1 - 200A/3P QD Optional Features: Standard Panel (Box Ahead),Standard Solid Neutral,Standard Ground Bar,Standard Mains and Feeders Mechanically Restrained 1-HC4259WP-PNLBD ENCLOSURE/BOX T-3R/12 59H 42W Estimated days to ship, excluding transit: 30 working days after customer release to manufacturer. See Conditions of Sale.

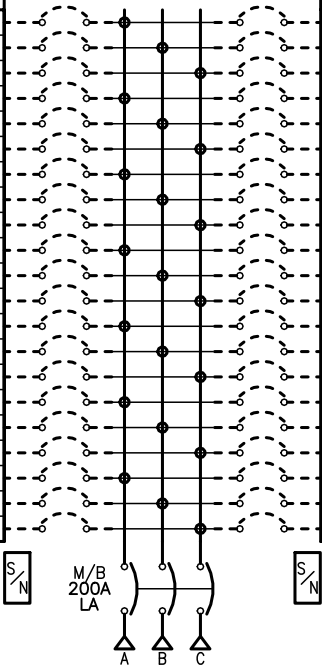
Seq #	Qty	Product Description
2	2	Designation : Product Details: 2-NQ MB Panel (INTERIOR)-NQ Panelboard Consisting of 208Y/120V 3Ph 4W 60Hz SCCR: 22kA Fully Rated Single Main: 200A/3P LA Circuit Breaker Incoming Conductors: 1 - #1 - 600,(2)#1 - 250 kcmil AL Ground Bar Bus: 400A Rated Aluminum: Tin Plated 42 Circuit Interior Type 1,Box: 62H x 20W x 5.75D Incoming: Bottom Trim: Flush - Hinged Box Cat No: MH62BE Front Cat No: NC62VFHR Ref. Drawing: PBA710HR Feeders: 42 - 20A/1P QOB-VH Prepared Space Optional Features: Standard Panel (Box Ahead),Blank Endwalls,Standard Solid Neutral,Standard Ground Bar 2-MH62BE-PANELBOARD ENCLOSURE/BOX TYPE 1 62H 20W 2-NC62VFHR-PNLBD COVER/TRIM NF T-1 F 62H 20W Estimated days to ship, excluding transit: 20 working days after customer release to manufacturer. See Conditions of Sale.

CKT NO	ACCESSORIES	TYPE	RATING AMP/P	PHASE BUS CONN							PHASE BUS CONN	RATING AMP/P	TYPE	ACCESSORIES	CKT NO
	4.50" BLANK													4.50" BLANK	
	1.50" BLANK										C	100 /3	BD	PS 4.50" FP	2
	1.50" BLANK										B				
1		LA	400 /3	A	A	100 /3	BD	PS 4.50" FP	4						
	B			B											
	C			A											
	BRANCH MOUNTED MAIN	MG	600 /3	A	A	/3	DP1	20A/1P QO_VH PS 20A/1P QO_VH PS 20A/1P QO_VH PS 20A/1P QO_VH PS 20A/1P QO_VH PS 20A/1P QO_VH PS	6						
				B	B										
				C	C										
					B	200 /3	QD		8						
					A										

REV	DESCRIPTION	BY	DATE	-	----	---	---/---/---
-	----	---	---/---/---	-	----	---	---/---/---

CKT NO	ACCESSORIES	TYPE	RATING AMP/P
1	PREPARED SPACE	QOB-VH	20/1
3	PREPARED SPACE	QOB-VH	20/1
5	PREPARED SPACE	QOB-VH	20/1
7	PREPARED SPACE	QOB-VH	20/1
9	PREPARED SPACE	QOB-VH	20/1
11	PREPARED SPACE	QOB-VH	20/1
13	PREPARED SPACE	QOB-VH	20/1
15	PREPARED SPACE	QOB-VH	20/1
17	PREPARED SPACE	QOB-VH	20/1
19	PREPARED SPACE	QOB-VH	20/1
21	PREPARED SPACE	QOB-VH	20/1
23	PREPARED SPACE	QOB-VH	20/1
25	PREPARED SPACE	QOB-VH	20/1
27	PREPARED SPACE	QOB-VH	20/1
29	PREPARED SPACE	QOB-VH	20/1
31	PREPARED SPACE	QOB-VH	20/1
33	PREPARED SPACE	QOB-VH	20/1
35	PREPARED SPACE	QOB-VH	20/1
37	PREPARED SPACE	QOB-VH	20/1
39	PREPARED SPACE	QOB-VH	20/1
41	PREPARED SPACE	QOB-VH	20/1

RATING AMP/P	TYPE	ACCESSORIES	CKT NO
20/1	QOB-VH	PREPARED SPACE	2
20/1	QOB-VH	PREPARED SPACE	4
20/1	QOB-VH	PREPARED SPACE	6
20/1	QOB-VH	PREPARED SPACE	8
20/1	QOB-VH	PREPARED SPACE	10
20/1	QOB-VH	PREPARED SPACE	12
20/1	QOB-VH	PREPARED SPACE	14
20/1	QOB-VH	PREPARED SPACE	16
20/1	QOB-VH	PREPARED SPACE	18
20/1	QOB-VH	PREPARED SPACE	20
20/1	QOB-VH	PREPARED SPACE	22
20/1	QOB-VH	PREPARED SPACE	24
20/1	QOB-VH	PREPARED SPACE	26
20/1	QOB-VH	PREPARED SPACE	28
20/1	QOB-VH	PREPARED SPACE	30
20/1	QOB-VH	PREPARED SPACE	32
20/1	QOB-VH	PREPARED SPACE	34
20/1	QOB-VH	PREPARED SPACE	36
20/1	QOB-VH	PREPARED SPACE	38
20/1	QOB-VH	PREPARED SPACE	40
20/1	QOB-VH	PREPARED SPACE	42



PHYSICAL DATA


ENCLOSURE Type 1
Flush – Hinged
FRONT CAT#: NC62VFHR
BOX CAT#: MH62BE

DIMENSIONS:
62”(1575mm)Hx20”(508mm)Wx5.75”(146mm)D
WIRE BENDING SPACE:
TOP – 12.25”(312)mm
BOTTOM – 15.43”(392)mm
SIDE – 5.9”(150)mm
PBA: 710HR
BUSSING: 400A RATED ALUMINUM BUS
Tin Plated
OPTIONAL FEATURES:
BLANK ENDWALLS
ALUMINUM SOLID NEUTRAL
ALUMINUM GROUND BAR

ELECTRICAL DATA

SYSTEM: 208Y/120V 3Ph 4W 60Hz
System Ampacity: 200A
22kA SYMS. SCCR
Fully Rated

MAIN: MAIN BREAKER LA 200A
Bottom FEED
42kA AIR
INCOMING CONDUCTORS(S) PER NEC, CEC, NOM:
Wire Bending Space:
Phase Lugs:1 – #1 – 600,(2)#1 – 250 kcmil
-----BRANCH SUMMATION-----
42 – 20A/1P-PS QOB-VH

JOB NAME:	Village of Saranac Lake Garage	EQUIPMENT DESIGNATION:	
JOB LOCATION:		EQUIPMENT TYPE:	NQ (Circuit Breaker Type) PANEL 1 OF 1
DRAWN BY:	CAD	DRAWING TYPE:	ONE LINE DIAGRAM
ENGR:			
DATE:	April 22 2025		
DRAWING STATUS:	QUOTE	DWG#	0Q-5909946-178690584-01
		PG 1	OF 1
		REV	-



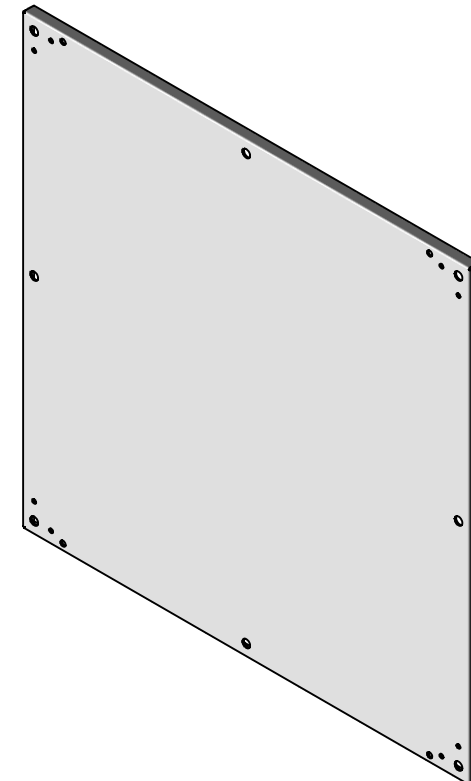
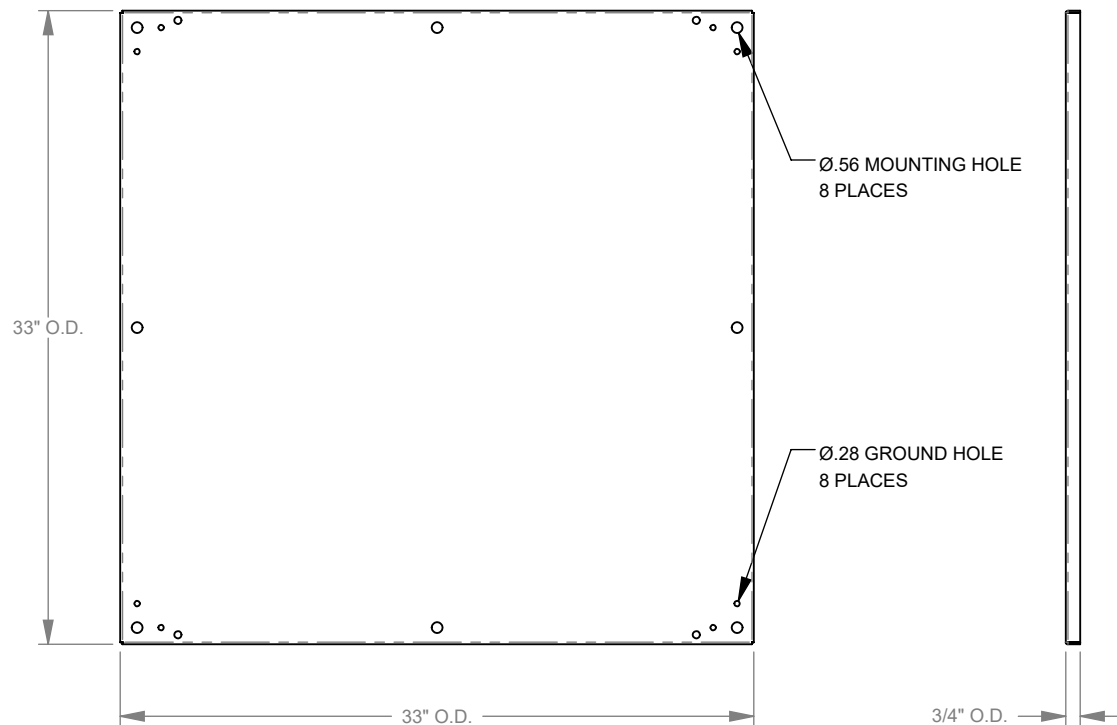
MILBANK
ENERGY AT WORK



A-36P36

Catalog Number	A-36P36
Marketing Product Description	Back Panel Non UL Listed 36x36 Hinge Cover White Steel
UPC	784572182998
Length (IN)	0.75
Width (IN)	33
Height (IN)	33
Weight (LB)	34
Brand Name	Milbank
Type	Panel for Mounting Electronic Controls
Application	Enclosure Accessory
Material	Steel
Finish	Powder Coat Finish
Shape	Square
Size	0.75L x 33W x 33H
Color	White
Construction	Sheared
Mounting	Stud Mount
NEMA Rating	No Rating

Please consult serving utility for their requirements prior to ordering or installing, as specifications and approvals vary by utility and may require local electrical inspector approval. All installations must be installed by a licensed electrician and must comply with all national and local codes, laws and regulations. Milbank reserves the right to make changes in specifications and features shown without notice or obligation.



MILBANK
ENERGY AT WORK

Version:

1

**All dimensions are +/- 1/16".
Drawing views are not to scale.**

Please consult serving utility for their requirements prior to ordering or installing, as specifications and approvals vary by utility, and may require local electrical inspector approval. All installations must be installed by a licensed electrician and must comply with all national and local codes, laws and regulations. Milbank reserves the right to make changes in specifications and features shown without notice or obligation.



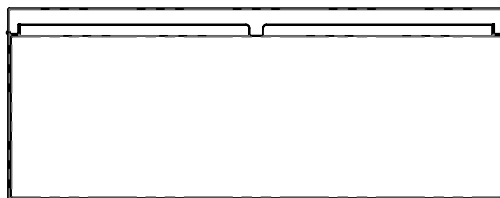
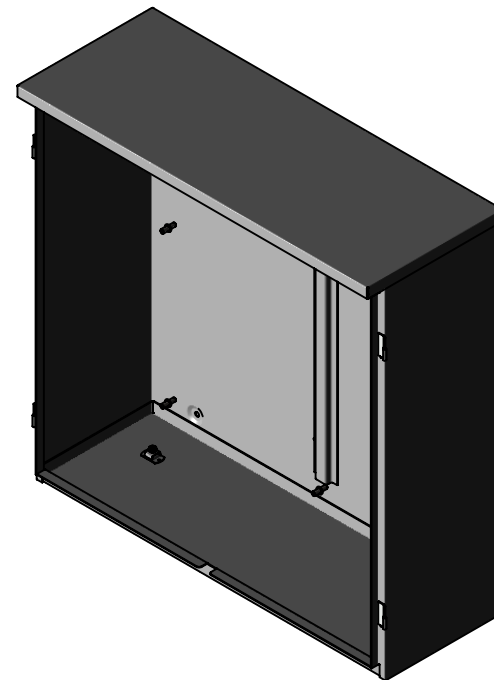
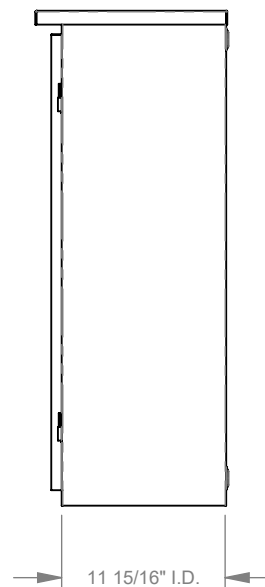
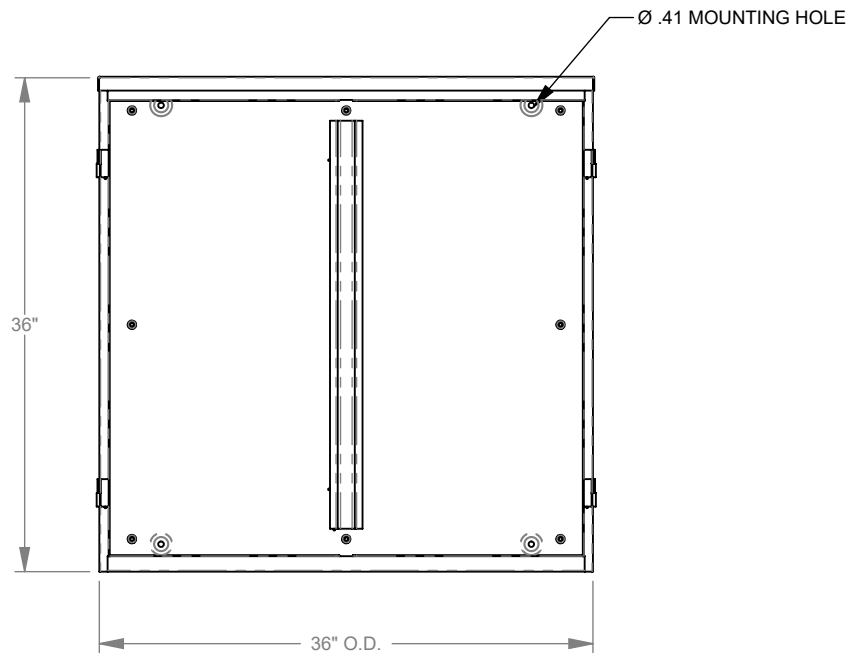
MILBANK
ENERGY AT WORK



363612-CT3R

Catalog Number	363612-CT3R
Marketing Product Description	36x12x36 Hinge Cover Type 3R Steel No Knockouts ANSI 61 Gray Double Doors Padlocking 3 Point Handle Back Panel Weld Studs Draw Shield No Center Position
UPC	784572161856
Length (IN)	12
Width (IN)	36
Height (IN)	36
Weight (LB)	118
Brand Name	Milbank
Type	Hinge Cover
Application	Current Transformer Enclosure
Standard	UL Listed
Material	G90 Galvanized Steel with Powder Coat Finish
Size	12L x 36W x 36H
Color	ANSI 61 Gray
Cable Entry	No Knockouts
Mounting	Pad Mount or Wall Mount
NEMA Rating	Type 3R
Door or Cover	Double Door
Back Panel	Mounting Emboss on Enclosure Back

Please consult serving utility for their requirements prior to ordering or installing, as specifications and approvals vary by utility and may require local electrical inspector approval. All installations must be installed by a licensed electrician and must comply with all national and local codes, laws and regulations. Milbank reserves the right to make changes in specifications and features shown without notice or obligation.



MILBANK
ENERGY AT WORK

Version:

1

**All dimensions are +/- 1/16".
Drawing views are not to scale.**

Please consult serving utility for their requirements prior to ordering or installing, as specifications and approvals vary by utility, and may require local electrical inspector approval. All installations must be installed by a licensed electrician and must comply with all national and local codes, laws and regulations. Milbank reserves the right to make changes in specifications and features shown without notice or obligation.