

**RESOLUTION #22-08
REESTABLISHING PRECINCTS AND POLLING PLACES**

WHEREAS, the legislature of the State of Minnesota has been redistricted; and
WHEREAS, Minnesota Statute section 204B.14, subd. 3(d) requires that precinct boundaries must be reestablished within 60 days of when the legislature has been redistricted or at least 19 weeks before the state primary election, whichever comes first;

NOW, THEREFORE BE IT RESOLVED, that the Town Board of the Township of Baldwin, County of Sherburne, State of Minnesota hereby reestablishes the boundaries of the voting precincts and polling places as follows:

Precinct 1 (Town Hall, 30239 – 128th Street)

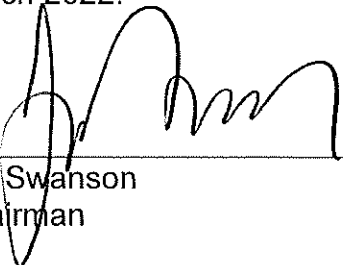
That area of the Town of Baldwin lying west of U.S. Highway 169 and outside of the boundaries of the City of Princeton.

Precinct 2 (Baldwin Township Maintenance Building, 30239 – 128th Street)

That area of the Town of Baldwin lying east of U.S. Highway 169 and outside of the boundaries of the City of Princeton.

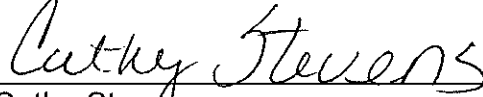
Attached to this resolution, for illustrative purposes, is a map showing said precincts and the location of each polling place.

Adopted by the Town Board of Supervisors of the Town of Baldwin this 14th day of March 2022.



Jay Swanson
Chairman

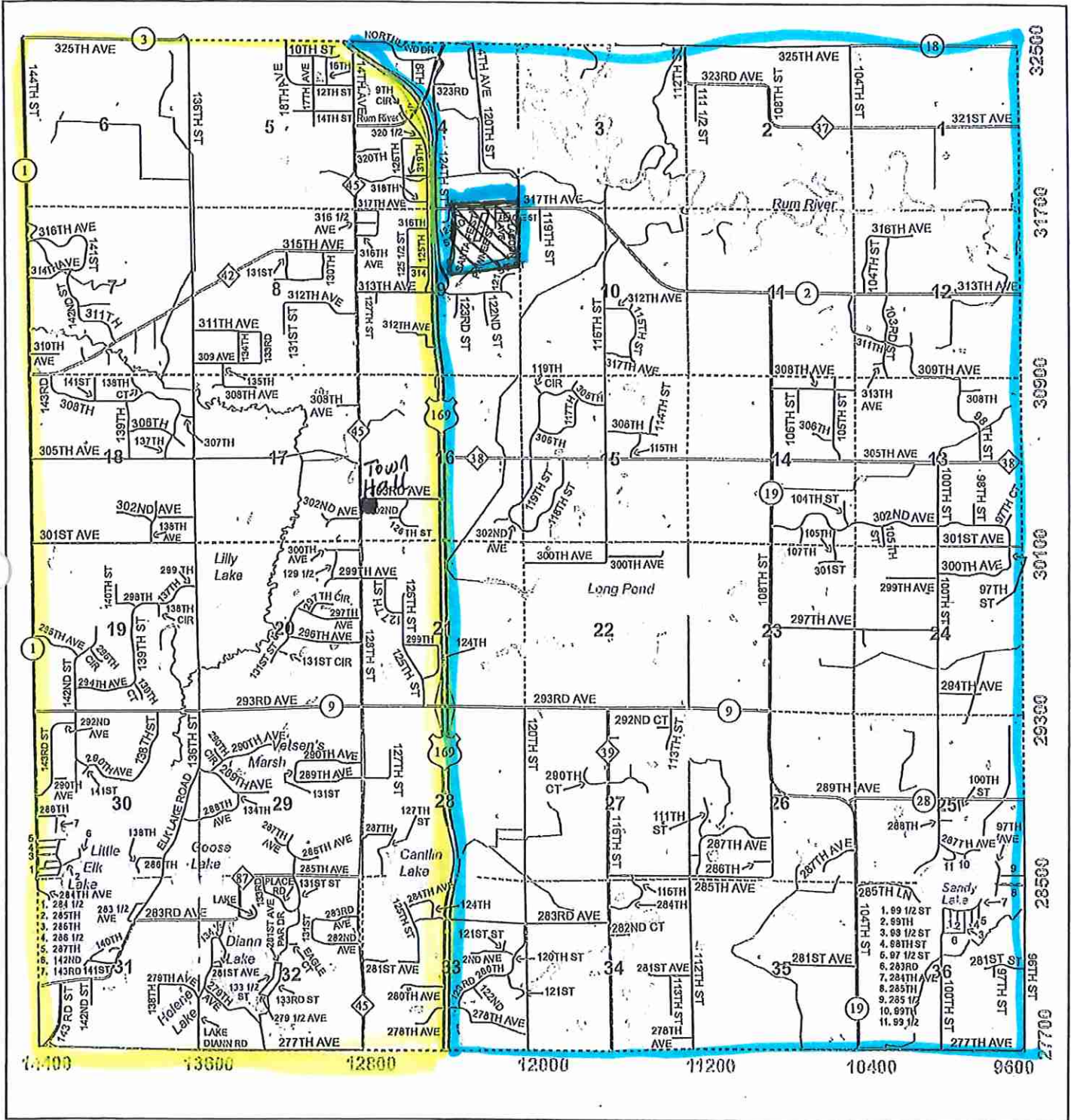
ATTEST

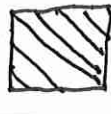


Cathy Stevens
Clerk/Treasurer

Precinct 1

Precinct 2



 City of Princeton