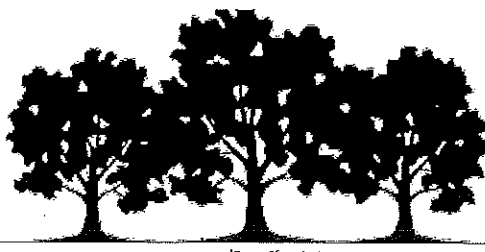


5/6/22 Mailed



BALDWIN TOWNSHIP

30239 128th Street, Princeton MN 55371

Telephone: (763) 389-8931

Fax: (763) 389-2751

BALDWIN TOWNSHIP SHERBURNE COUNTY, MINNESOTA RESOLUTION #22-12

REQUEST FOR MNDOT SPEED ZONE STUDY ON 136th STREET N.W. COMMENCING AT SHERBURNE COUNTY ROAD 42 AND CONTINUING SOUTH TO SHERBURNE COUNTY ROAD 9 AND THERE ENDING

WHEREAS, this minor arterial/collector roadway serves an increasingly number of residents due to recent expansion of subdivisions, and

WHEREAS, the topography of roadway includes numerous hills and limited visibility for several intersections and numerous driveways, now

THEREFORE, be it resolved that the Baldwin Board of Supervisors request an engineering/traffic study to determine if a lower speed limit is reasonable and safe for **136th STREET N.W. COMMENCING AT SHERBURNE COUNTY ROAD 42 AND CONTINUING SOUTH TO SHERBURNE COUNTY ROAD 9 AND THERE ENDING.**

In favor of:

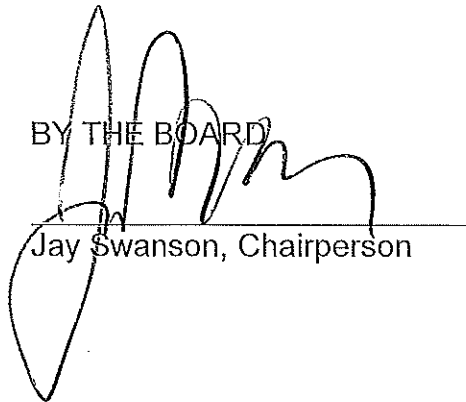
Swanson, Rush, Hudson, Lawrence, Case

Opposed:

None.

Dated this 4th day of April, 2022.

BY THE BOARD



Jay Swanson, Chairperson

ATTEST:

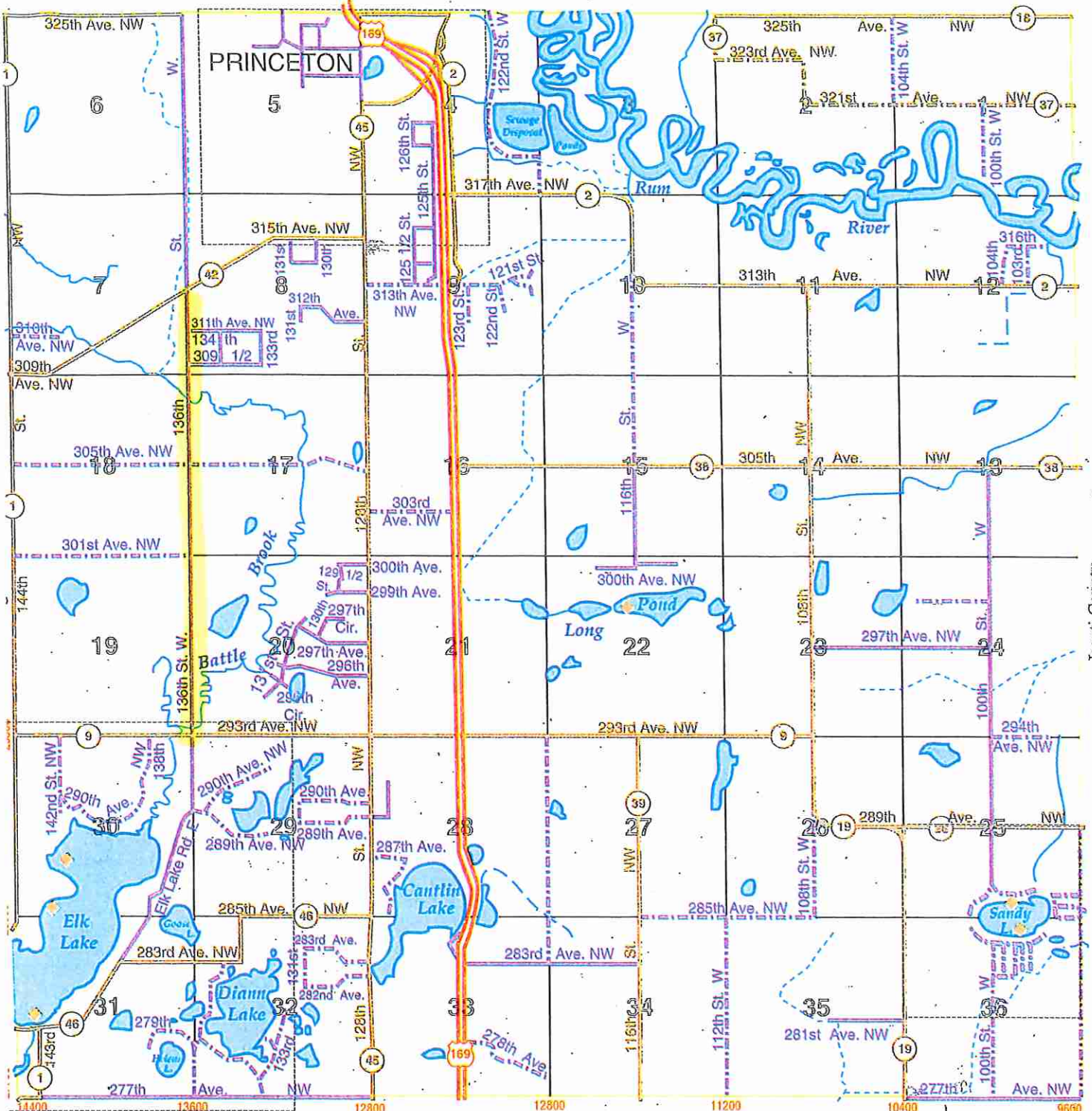
Cathy Stevens
Clerk/Treasurer

Mission Statement

To make Baldwin Township a proud place to live by safeguarding property rights, encouraging agriculture, commercial communities and residential growth.



Mille Lacs County



Isanti County

See Page 33

© 1995 Cloud Cartographics, Inc. St. Cloud, MN 56301


South Princeton area is on Page 46

Sandy Lake area is on Page 46

Elk Lake area is on Page 47



John Davis'
PRINCETON AUTO CENTER
 "On the Leading Edge"
 Hwy 169 • Princeton
(612) 389-1822
 1-800-743-5227



ROGER WINKELMAN
 President
 31841 124th St.
 PO Box 206
 Princeton, MN 55371
 (612) 389-1873
 Fax: 389-9434