



BALDWIN TOWNSHIP

30239 128th Street, Princeton MN 55371

Telephone: (763) 389-8931

Fax: (763) 389-2751

**BALDWIN TOWNSHIP
SHERBURNE COUNTY, MINNESOTA
RESOLUTION #22-19**

REQUEST FOR MNDOT SPEED ZONE STUDY IN NORDWALL ESTATES AND NORDWALL ESTATES SECOND ADDITION, SPECIFICALLY 131ST STREET N.W., 133RD STREET N.W., 286TH AVENUE N.W., 287TH AVENUE N.W. AND 288TH AVENUE N.W.

WHEREAS, this minor arterial platted roadway serves an increasingly number of residents due to recent expansion of the subdivision, and

WHEREAS, the topography of roadway includes limited visibility for several intersections and numerous driveways, now

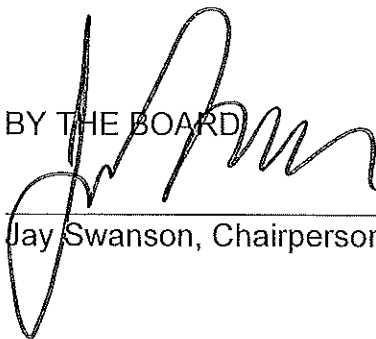
THEREFORE, be it resolved that the Baldwin Board of Supervisors request an engineering/traffic study to determine if a lower speed limit is reasonable and safe for **NORDWALL ESTATES AND NORDWALL ESTATES SECOND ADDITION, SPECIFICALLY 131ST STREET N.W., 133RD STREET N.W., 286TH AVENUE N.W., 287TH AVENUE N.W. AND 288TH AVENUE N.W.**

In favor of:

Opposed:

Dated this 20th day of June, 2022.

BY THE BOARD


Jay Swanson, Chairperson

ATTEST:


Cathy Stevens
Clerk/Treasurer

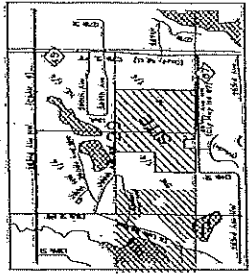
Mission Statement

To make Baldwin Township a proud place to live by safeguarding property rights, encouraging agriculture, commercial communities and residential growth.

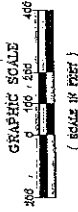
48996

NORDWALL ESTATES

BALDWIN TOWNSHIP,
SHERBURNE COUNTY, MN.



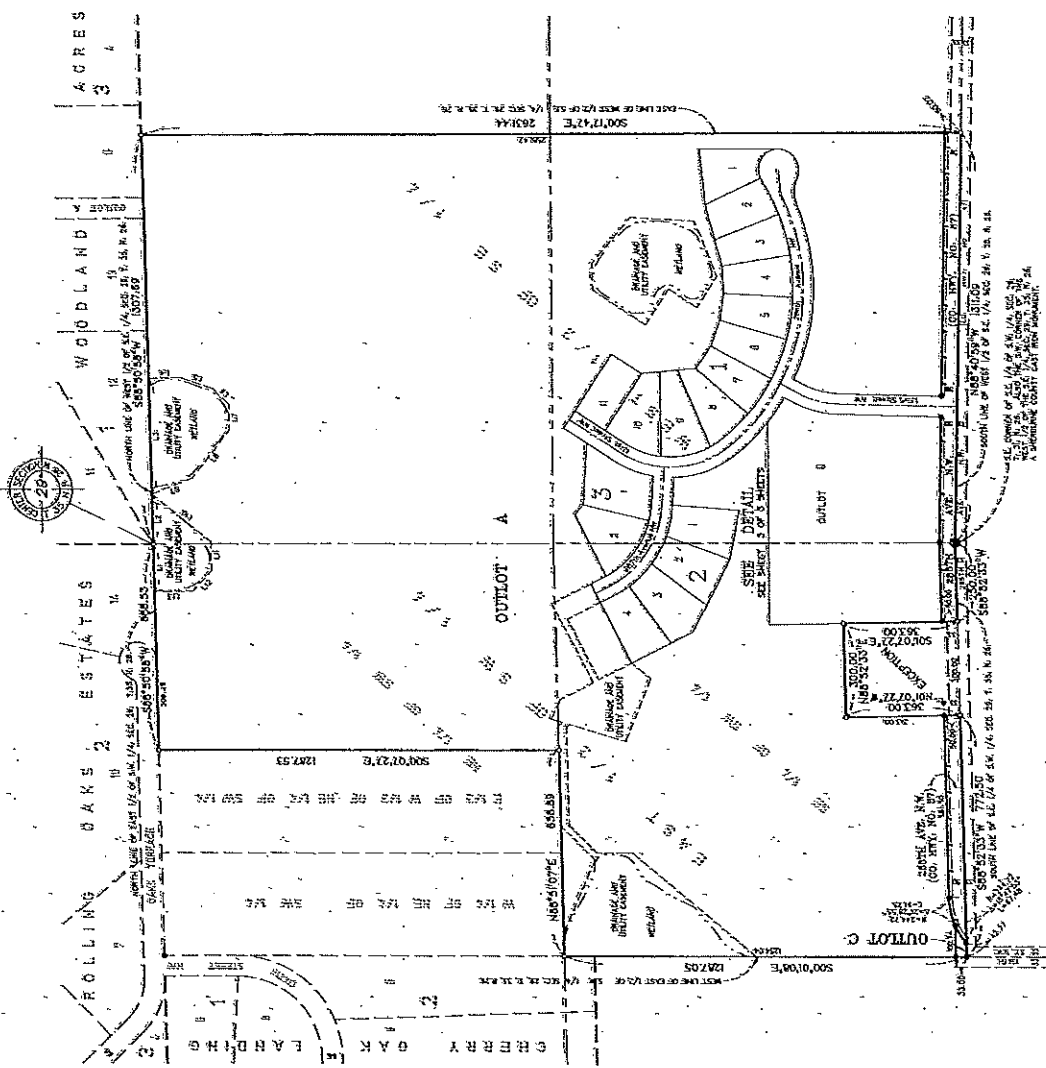
SECTION 29, TOWNSHIP 35, RANGE 23
VICINITY MAP



- Scale: 1 inch = 200 feet
- For the purpose of this plat, the south line of the S.E. 1/4 of Sec. 29, T. 35, R. 23, is designated to bear North 88 40' 20" West.
- Quotas 1/2 inch x 1/4 inch per acre set with a plastic plus numbered R.L.S. 21720.
- Quotas 1/2 inch x 1/4 inch per acre with a plastic plus numbered R.L.S. 21720.
- Quotas 1/2 inch x 1/4 inch per acre with a plastic plus numbered R.L.S. 21720.
- Quotas 1/2 inch x 1/4 inch per acre with a plastic plus numbered R.L.S. 21720.
- Quotas 1/2 inch x 1/4 inch per acre with a plastic plus numbered R.L.S. 21720.
- Quotas 1/2 inch x 1/4 inch per acre with a plastic plus numbered R.L.S. 21720.
- Quotas 1/2 inch x 1/4 inch per acre with a plastic plus numbered R.L.S. 21720.
- Quotas 1/2 inch x 1/4 inch per acre with a plastic plus numbered R.L.S. 21720.

Quotas and utility easements are shown
therein

Being to meet in main and adjoining Right of Way/Plats also showing 9 feet in width easements for utility easements and driveway easements, as shown on this plat.



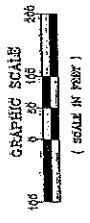
Lot No.	Area (Acres)	Area (Sq. Ft.)
1	0.10	6969.6
2	0.10	6969.6
3	0.10	6969.6
4	0.10	6969.6
5	0.10	6969.6
6	0.10	6969.6
7	0.10	6969.6
8	0.10	6969.6
9	0.10	6969.6
10	0.10	6969.6

48896

NORDWALL ESTATES

BALDWIN TOWNSHIP
SHERBURNE COUNTY, MN.

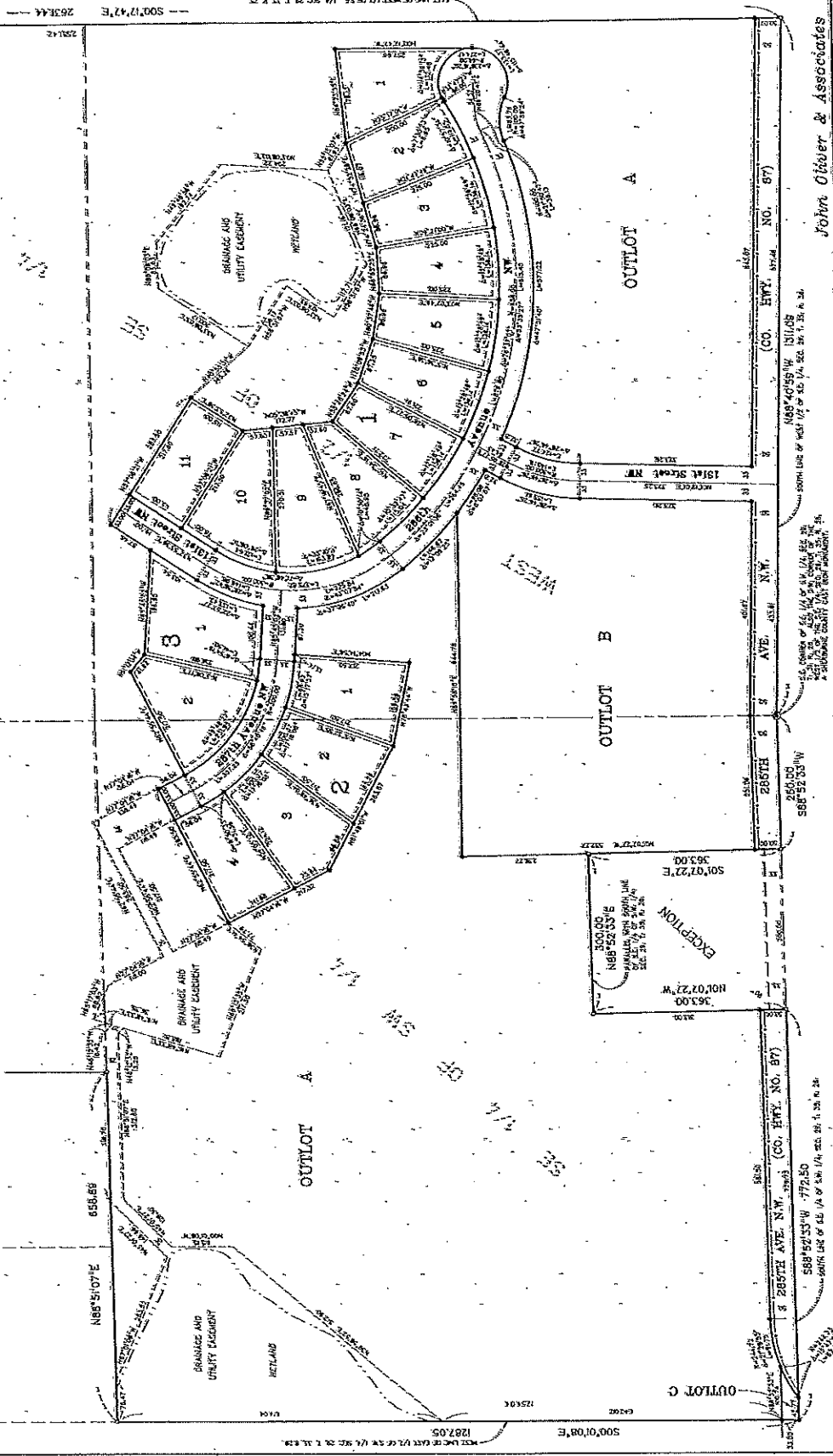
- Boxes 1/2 inch x 1/4 inch Non 200 feet with a plastic blue stamped ruler 2122.
- Boxes 1/2 inch x 1/4 inch Non 200 feet with a plastic ruler stamped R.L.D. 2122 to be set within 1 year of recording this plan.
- Boxes 1/4 inch measurement found.
- Boxes 1/4 inch measurement found.



Scale: 1 inch = 200 feet
 For the purposes of this plan, the Square Footage of the lots shown hereon is based on the area of the lots as shown on this plan.

Boxes and Utility Equipment are shown
 in blue.

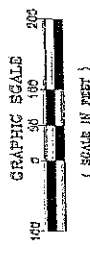
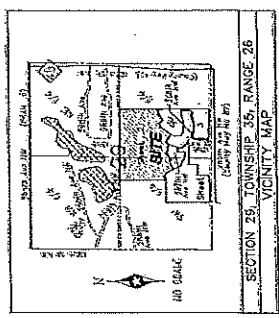
Boxes 12 feet in width and 6 inches high with
 a 6 inch diameter opening in the center
 shall be set within 1 year of recording this plan
 as shown on this plan.



John Otter & Associates
SHEET 3 OF 3 SHEETS

NORDWALL ESTATES SECOND ADDITION

ROLLING OAKS ESTATES	WOODLAND	ACRES
2	1	6

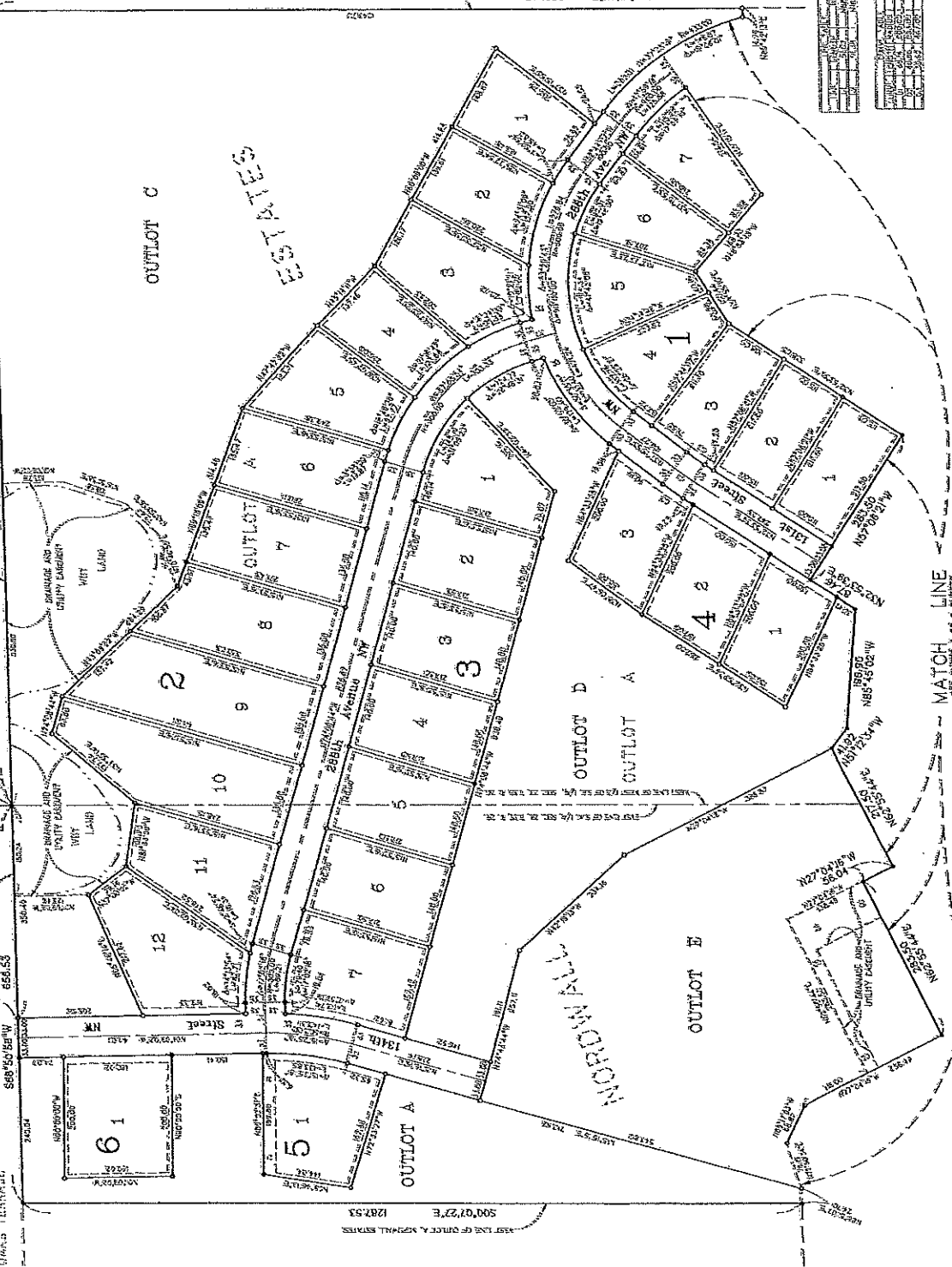


- Station 1 has a 100 foot
- For the purposes of this plan, the South
- Line of the S.E. 1/4 of S86, 29, 1, 36, 2, 26,
- is assumed to bear North 89-40'58" West.
- Developer a 1/2 inch x 1/4 inch iron pipe set
- with a plastic plug stamped R.L.S. 21729.
- Developer a 1/2 inch x 1/4 inch iron pipe with
- a plastic plug stamped R.L.S. 21729 to be
- set within 1 year of recording this plat.
- Developer on 1/4 acre adjacent tract.

Developer and utility easements are shown
thick



Being 12 feet in width and adjoining east-
ern boundary, pipe being 6 feet in width
and adjoining lot line. Utility easements
indicated as shown on the plat.



MATCH LINE
SEE SHEET 3 of 3 SKETCHES

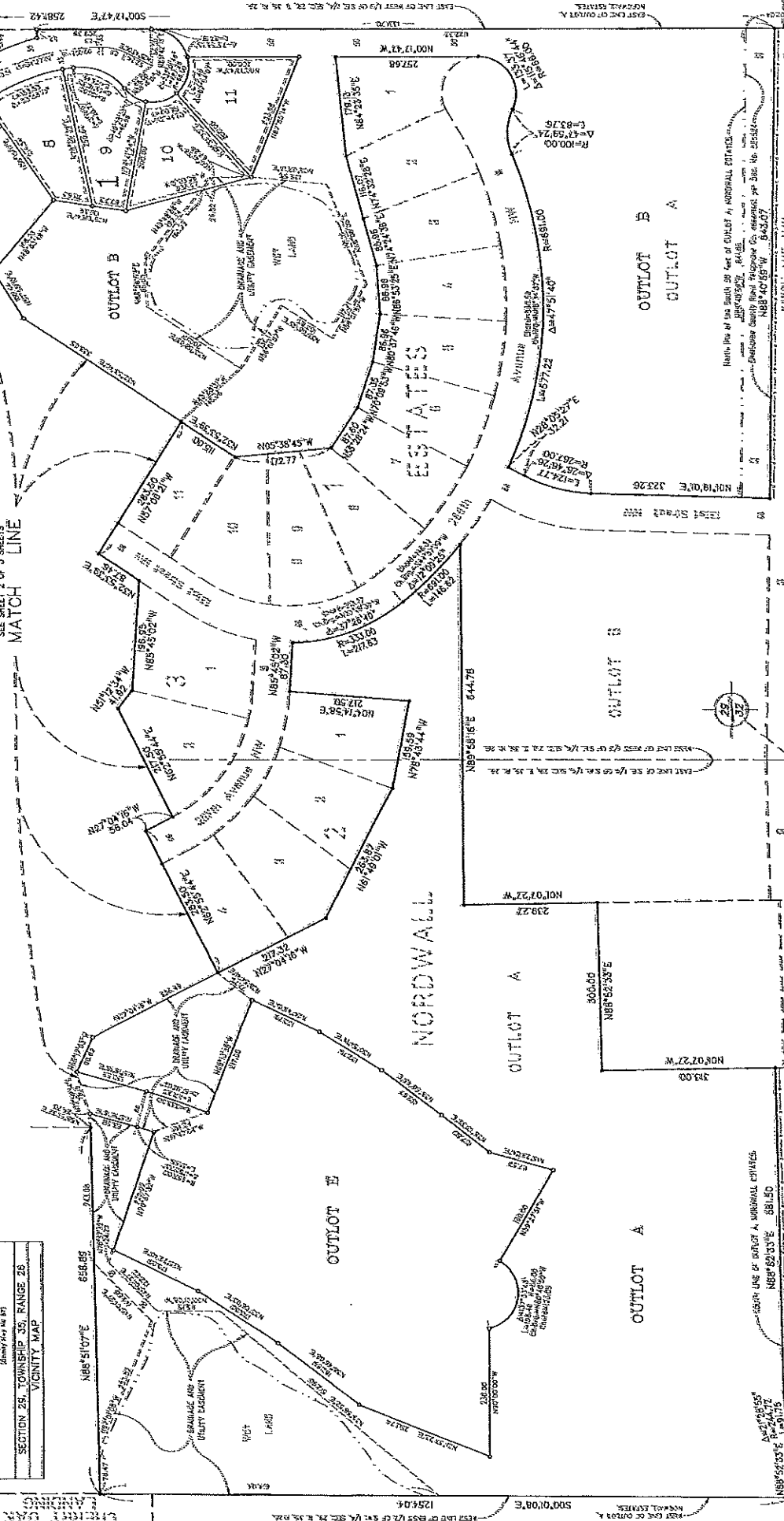
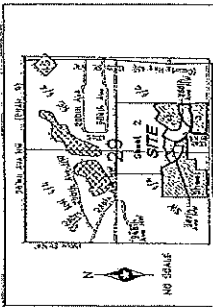
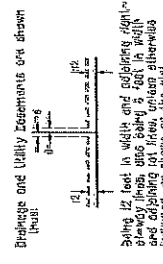
NORDWALL ESTATES SECOND ADDITION



Sheet 1 inch = 100 feet
For the purposes of this plat, the South
Line of the S.S. 1/4 of Sec. 26, T. 35, R. 26,
is assumed to bear North 88°40'00" West.

DATE	BY	FOR
NOV 21 2008	J. OLIVER	RECORD
NOTARIAL PUBLIC STATE OF MINNESOTA		
J. OLIVER		

- Densities 5 1/2 inch x 14 inch iron rods set with a plastic plug stamped S.S., 21723.
- Densities 5 1/2 inch x 14 inch iron rods with a plastic plug stamped S.S., 21723 to be set within 1 year of recording this plat.
- Densities on 500 monument towers.
- Densities on 1000 monument towers.



288th AVE. N.W.

125th AVE. N.W.

130th AVE. N.W.

135th AVE. N.W.

140th AVE. N.W.

145th AVE. N.W.

150th AVE. N.W.

155th AVE. N.W.

160th AVE. N.W.

165th AVE. N.W.

170th AVE. N.W.

175th AVE. N.W.

180th AVE. N.W.

185th AVE. N.W.

190th AVE. N.W.

195th AVE. N.W.

200th AVE. N.W.

205th AVE. N.W.

210th AVE. N.W.

215th AVE. N.W.

220th AVE. N.W.

225th AVE. N.W.

230th AVE. N.W.

235th AVE. N.W.

240th AVE. N.W.

245th AVE. N.W.

250th AVE. N.W.

255th AVE. N.W.

260th AVE. N.W.

265th AVE. N.W.

270th AVE. N.W.

275th AVE. N.W.

280th AVE. N.W.

285th AVE. N.W.

290th AVE. N.W.

295th AVE. N.W.

300th AVE. N.W.

305th AVE. N.W.

310th AVE. N.W.

315th AVE. N.W.

320th AVE. N.W.

325th AVE. N.W.

330th AVE. N.W.

335th AVE. N.W.

340th AVE. N.W.

345th AVE. N.W.

350th AVE. N.W.

355th AVE. N.W.

360th AVE. N.W.

365th AVE. N.W.

370th AVE. N.W.

375th AVE. N.W.

380th AVE. N.W.

385th AVE. N.W.

390th AVE. N.W.

395th AVE. N.W.

400th AVE. N.W.

405th AVE. N.W.

410th AVE. N.W.

415th AVE. N.W.

420th AVE. N.W.

425th AVE. N.W.

430th AVE. N.W.

435th AVE. N.W.

440th AVE. N.W.

445th AVE. N.W.

450th AVE. N.W.

455th AVE. N.W.

460th AVE. N.W.

465th AVE. N.W.

470th AVE. N.W.

475th AVE. N.W.

480th AVE. N.W.

485th AVE. N.W.

490th AVE. N.W.

495th AVE. N.W.

500th AVE. N.W.