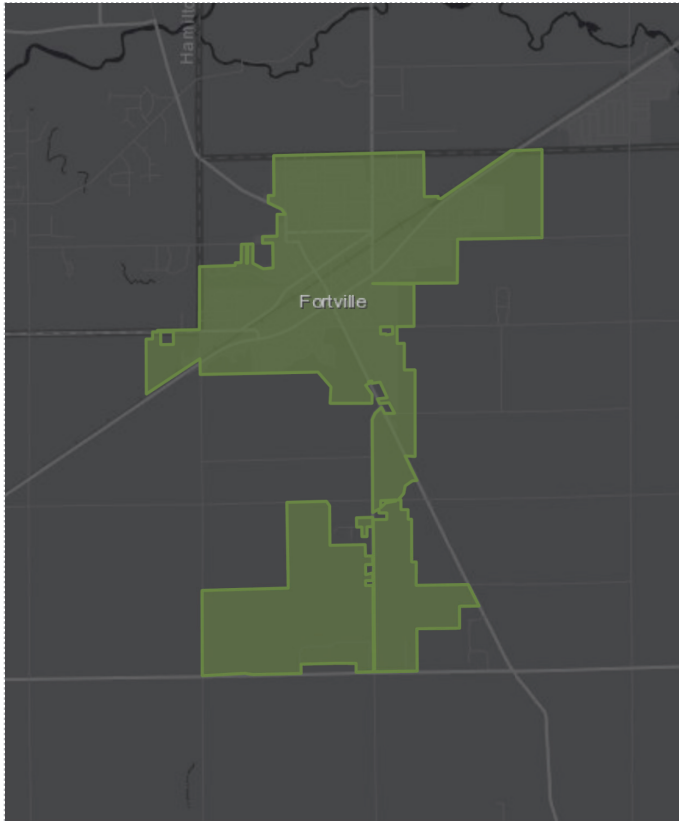




Fortville, Indiana



BALL STATE
UNIVERSITY



KEY FACTS

4,136

Total Population



1,629

Households

37.5

Median Age

\$41,897

Median Disposable
Income

INCOME



\$51,047

Median
Household
Income



\$25,509

Per Capita
Income



\$76,113

Median Net
Worth

EDUCATION

5%

No High
School
Diploma



36%

High School
Graduate



34%

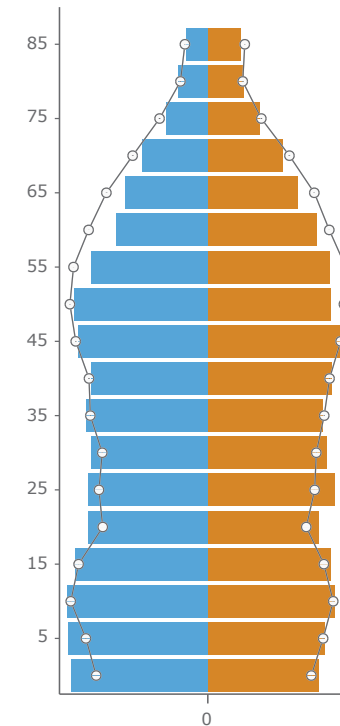
Some
College



25%

Bachelor's/Grad/Prof
Degree

Age Pyramid



The largest group:
2018 Female
Population Age
45-49 (Esri)

The smallest group:
2018 Male
Population Age 85+
(Esri)

Dots show comparison to
Hancock County

EMPLOYMENT



56%

White Collar



30%

Blue Collar



14%

Services



5.9%

Unemployment
Rate

BUSINESS



136

Total Businesses

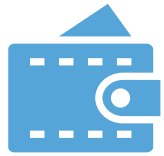


1,162

Total Employees

Source: This infographic contains data provided by American Community Survey (ACS), Esri, Esri and Bureau of Labor Statistics, Esri and Infogroup, U.S. Census. The vintage of the data is 2000, 2010, 2012-2016, 2018, 2023.

Fortville, Indiana



\$51,047

Median Household
Income

KEY DEMOGRAPHIC FACTS



4,136

Population



3,445

Daytime
Population

HOUSING STATS



\$135,997

Median Home
Value



\$7,263

Average Spent on
Mortgage &
Basics



\$614

Median Contract
Rent

Average Household Size
for this area

2.54 which is less than the average for United States

Area	Value	0.00	4.00
Hancock County	2.65		
United States	2.59		
This area	2.54		
Indiana	2.52		

POPULATION (ACS)



18.4%

Pop <18



18%

Pop 18-34



48.8%

Pop 35-64



14.6%

Pop 65+

ANNUAL HOUSEHOLD SPENDING



\$1,671

Apparel &
Services



\$134

Computers
& Hardware



\$2,734

Eating Out



\$3,935

Groceries



\$4,649

Health
Care

ANNUAL SPENDING PER HOUSEHOLD



\$2,618

Meals at Restaurants



\$402

Food & Drink on Trips

SPENDING ON EATING OUT



\$298

Breakfast



\$828

Lunch



\$1,261

Dinner

ANNUAL LIFESTYLE SPENDING



\$1,660

Travel



\$51

Theatre/Operas
/ Concerts



\$59

Movies/Museums/
Parks



\$54

Sports Events

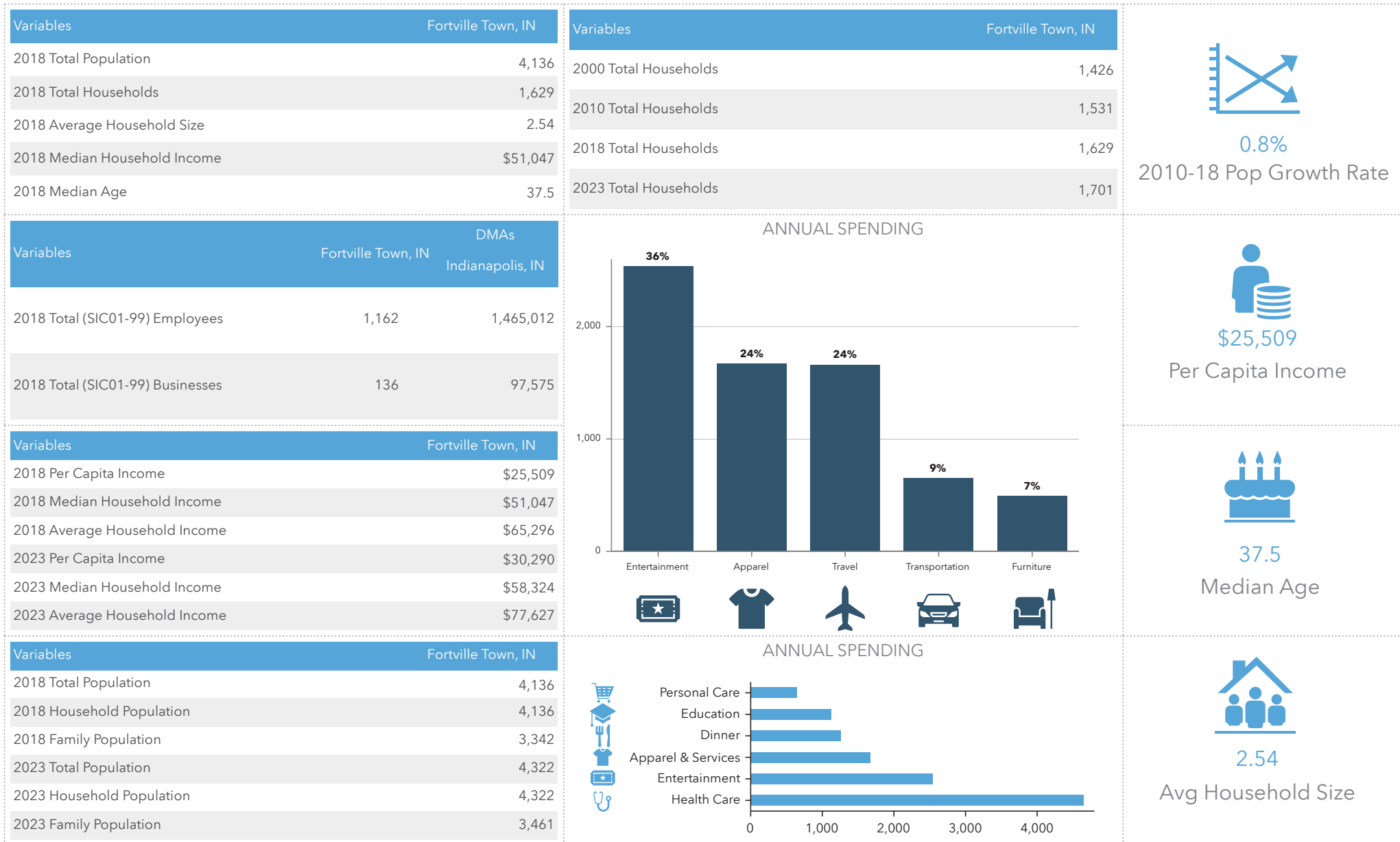


\$3

Online
Games

Source: This infographic contains data provided by American Community Survey (ACS), Esri, Esri and Bureau of Labor Statistics, Esri and Infogroup, U.S. Census. The vintage of the data is 2000, 2010, 2012-2016, 2018, 2023.

Fortville, Indiana



Source: This infographic contains data provided by American Community Survey (ACS), Esri, Esri and Bureau of Labor Statistics, Esri and Infogroup, U.S. Census. The vintage of the data is 2000, 2010, 2012-2016, 2018, 2023.