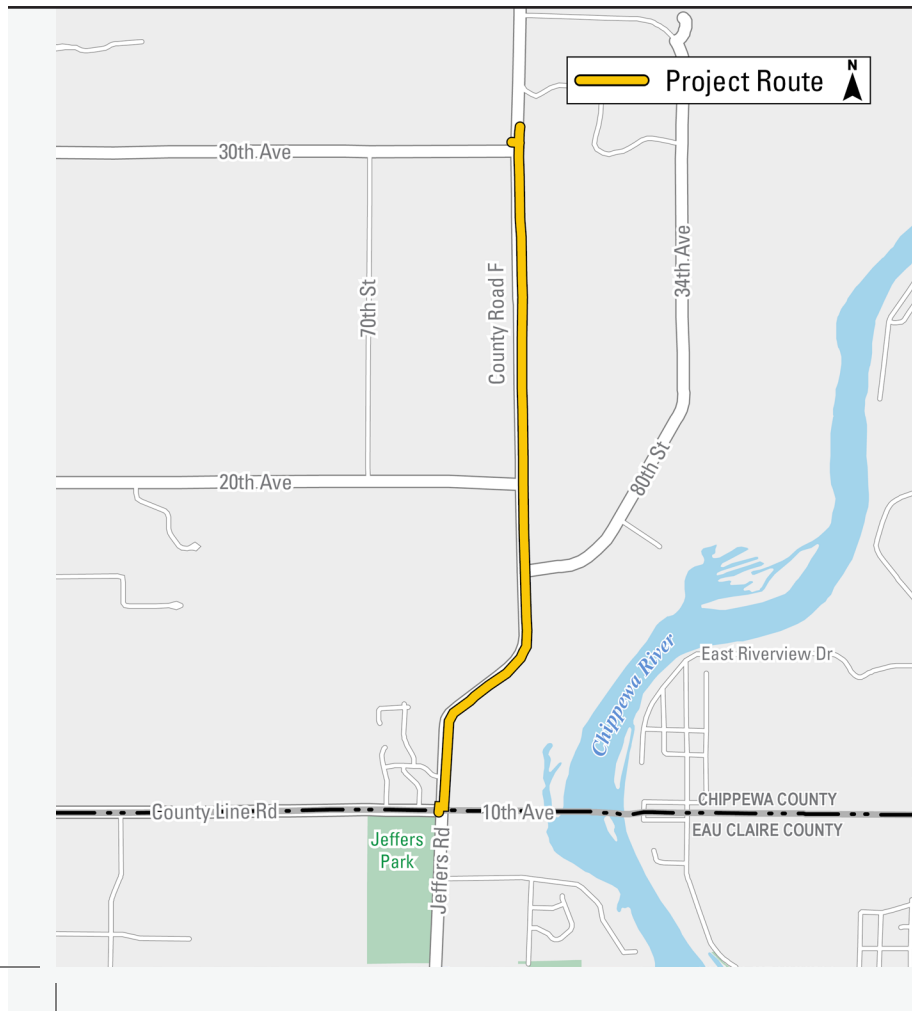


WHEATON NATURAL GAS PROJECT



WORK STARTING SOON



Construction

During construction, you may notice:

- Marking of utility lines and utility survey holes.
- Road and sidewalk closures.
- Traffic control.
- Parking restrictions.
- Temporary changes to how you access your location.
- Construction noise.



We work to reduce construction-related inconveniences and will temporarily restore work areas following natural gas line installation. Final restoration will occur when conditions allow.

Safety

Public safety is at the foundation of all we do. The safety of the public around Xcel Energy's natural gas system influences every decision we make.

If you suspect a natural gas leak, leave your home or business immediately. Once you are safely away, call **911**, then Xcel Energy at **800-895-2999**.



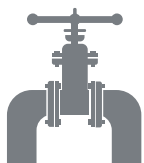
WHEATON NATURAL GAS PROJECT

WORK STARTING SOON



Starting as early as the week of May 16, 2022, construction activities will begin on County Road F, north of 30th Avenue in the Town of Wheaton and south of County Line Road in the City of Eau Claire. Construction is anticipated to be completed this fall.

Please note schedules are subject to change.



Overview

We are installing two miles of natural gas line and a regulator station which regulates natural gas pressure in the Town of Wheaton and City of Eau Claire for the Wheaton Natural Gas Project.

This work allows us to continue to provide safe, reliable natural gas service, and enhances system resiliency during extreme weather.



c/o Tetra Tech
2001 Killebrew Dr., #141
Bloomington, MN 55425



Contact Us

715-318-0311

XcelEnergyNaturalGasProjects.com/Wheaton
info@XcelEnergyWheatonGasProject.com

xcelenergy.com | © 2022 Xcel Energy Inc. | Xcel Energy is a registered trademark of Xcel Energy Inc.