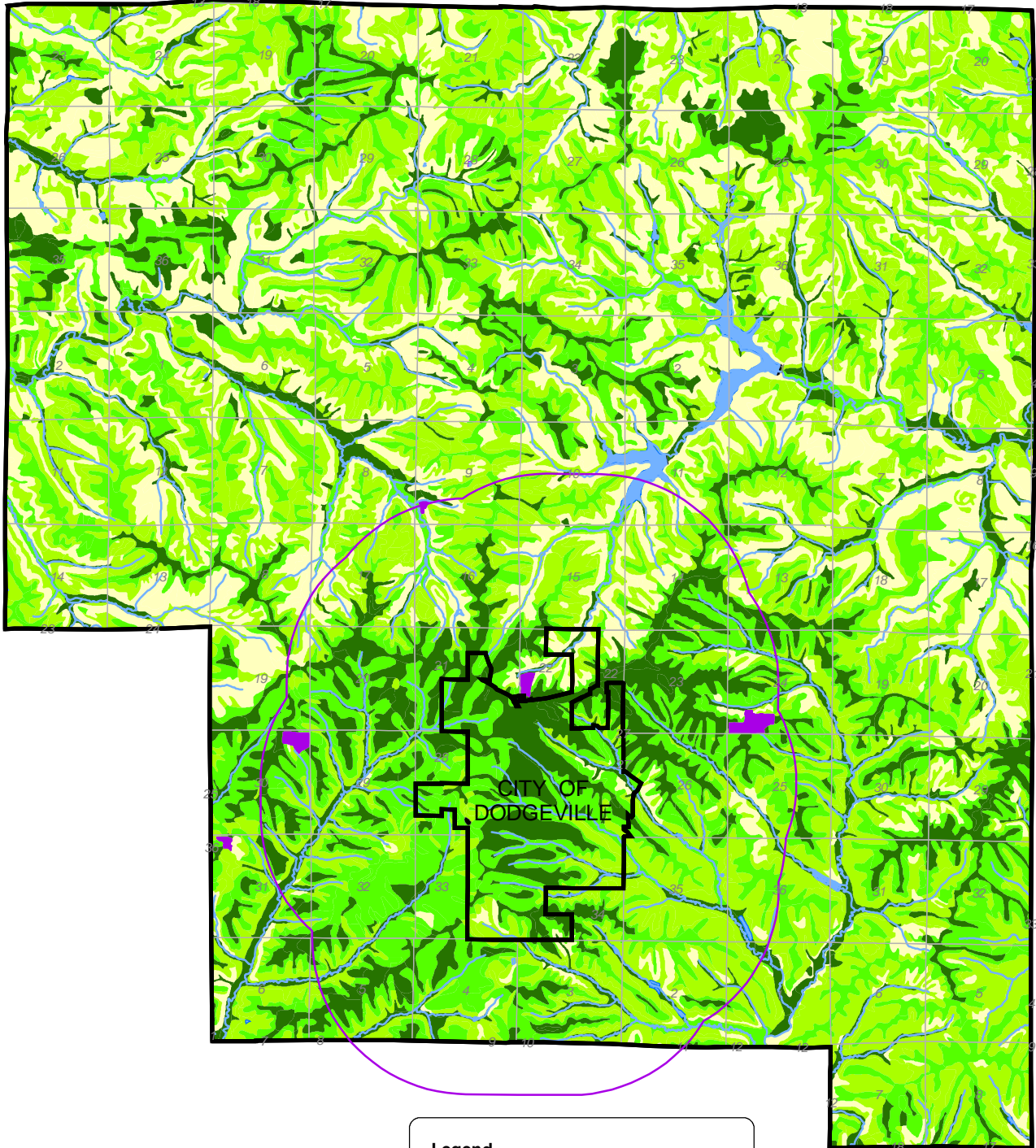


# DODGEVILLE SOIL CLASSIFICATIONS

- IOWA COUNTY, WISCONSIN -

## MAP E.1



SOUTHWESTERN WISCONSIN  
REGIONAL PLANNING COMMISSION  
719 Pioneer Tower  
1 University Plaza  
Platteville, WI 53818

February 28, 2005

SOURCE: USDA Soil Survey

S:\WGroups\SWWRPC\GIS\IowaCounty\Towns\Villages\Cities\  
DodgevilleTown\Projects\SmartGrowth\E-1SoilClass03\_DodgevilleTown

### Legend

- |                     |                  |
|---------------------|------------------|
| Municipal Boundary  | Other Soils      |
| 1.5 Mile ETZ Buffer | Quarries         |
| Sections            | Other Features   |
| Prime Soils         | Rivers And Lakes |
| State Soils         |                  |
| Local Soils         |                  |

1 inch equals 1.51 miles

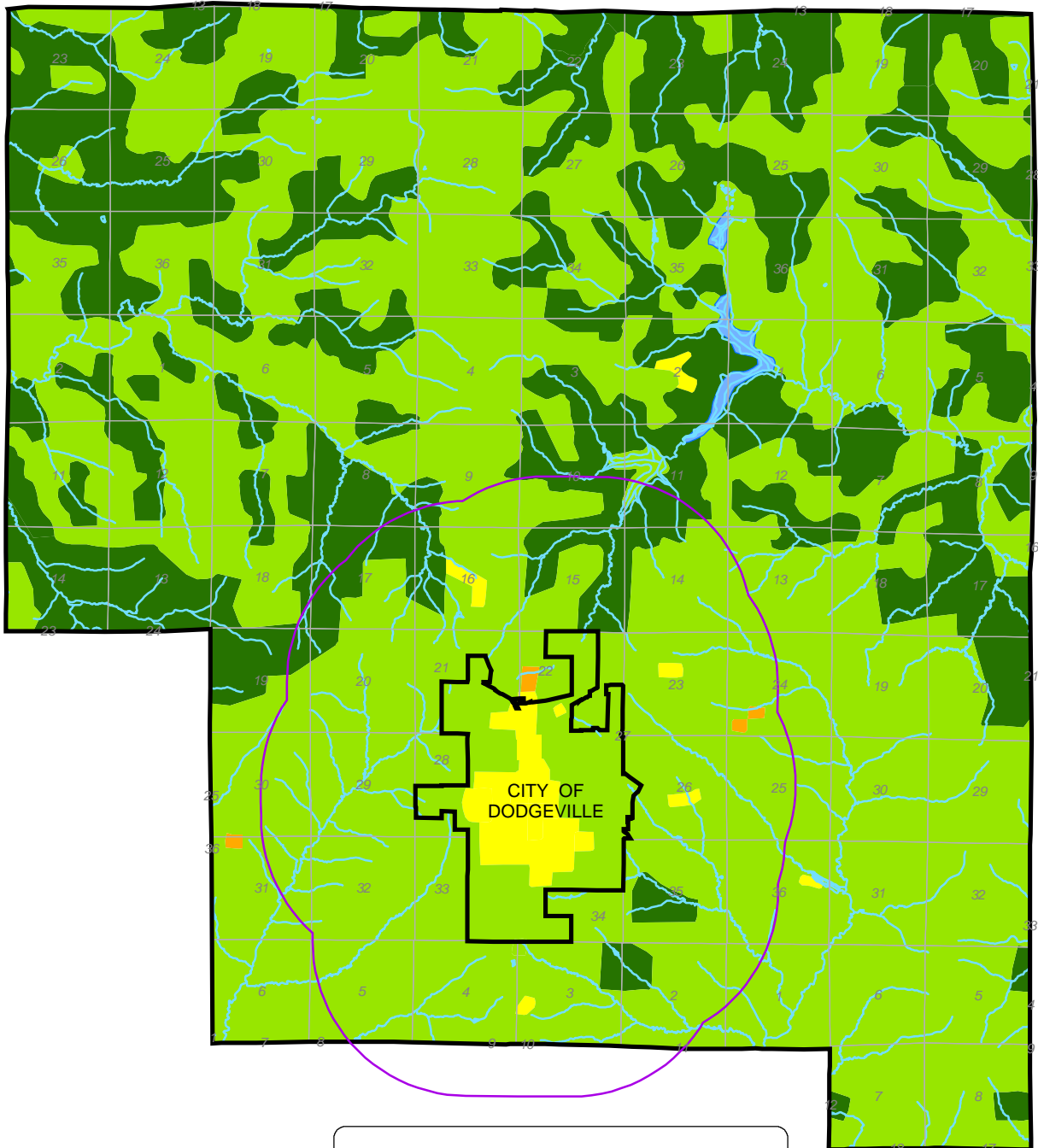


This map is neither a legally recorded map nor a technical survey and is not intended to be one. SWWRPC is not responsible for any inaccuracies herein contained.

# TOWN OF DODGEVILLE LAND COVER

- IOWA COUNTY, WISCONSIN -

## MAP E.2



SOUTHWESTERN WISCONSIN  
REGIONAL PLANNING COMMISSION  
719 Pioneer Tower  
1 University Plaza  
Platteville, WI 53818

February 28, 2005

### Legend

- |                     |                   |
|---------------------|-------------------|
| Municipal Boundary  | Forest            |
| 1.5 Mile ETZ Buffer | Open Water/Rivers |
| Sections            | Urban/Developed   |
| Agriculture         | Wetland           |
| Barren              |                   |

1 inch equals 1.59 miles



SOURCE: WI-DNR

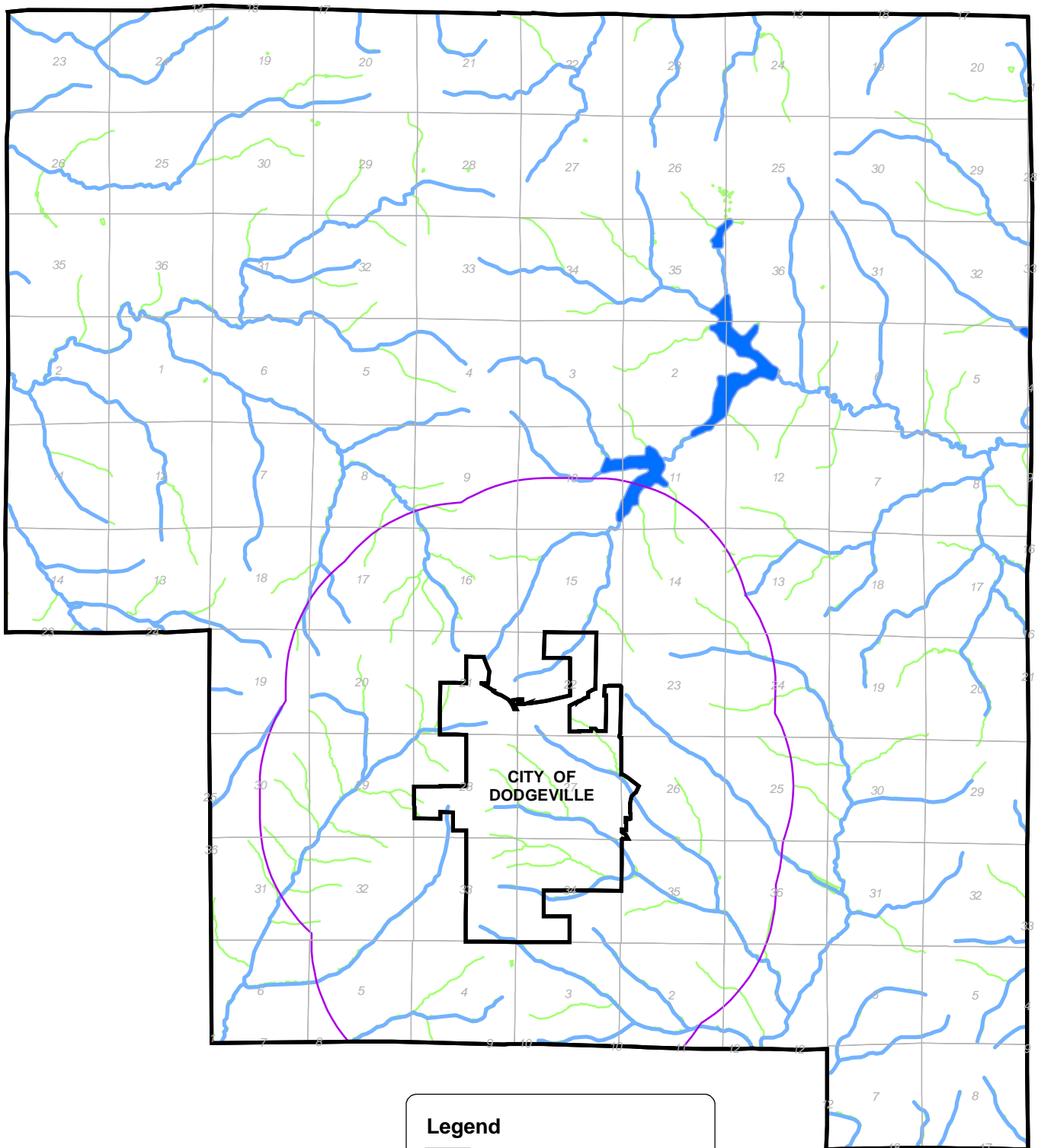
S:\WGroups\SWWRPC\GIS\IowaCounty\Towns\Villages\Cities\  
DodgevilleTown\Projects\SmartGrowth\E-2LandCover03\_DodgevilleTown

This map is neither a legally recorded map nor a technical survey and is not intended to be one. SWWRPC is not responsible for any inaccuracies herein contained.

# SURFACE WATER RESOURCES

- TOWN OF DODGEVILLE, IOWA COUNTY, WISCONSIN -

## MAP E.3








SOUTHWESTERN WISCONSIN  
REGIONAL PLANNING COMMISSION  
719 Pioneer Tower  
1 University Plaza  
Platteville, WI 53818

March 25, 2005

SOURCE: WI-DNR

S:\WGroups\SWWRPC\GIS\IowaCounty\Projects\  
E-3SmartGrowth\E-3WaterRes05\_DodgevilleTown

### Legend

-  Municipal Boundary
-  Sections
-  1.5 Mile ETZ Buffer
-  Intermittent Streams/Waterways
-  Perennial Streams/Rivers

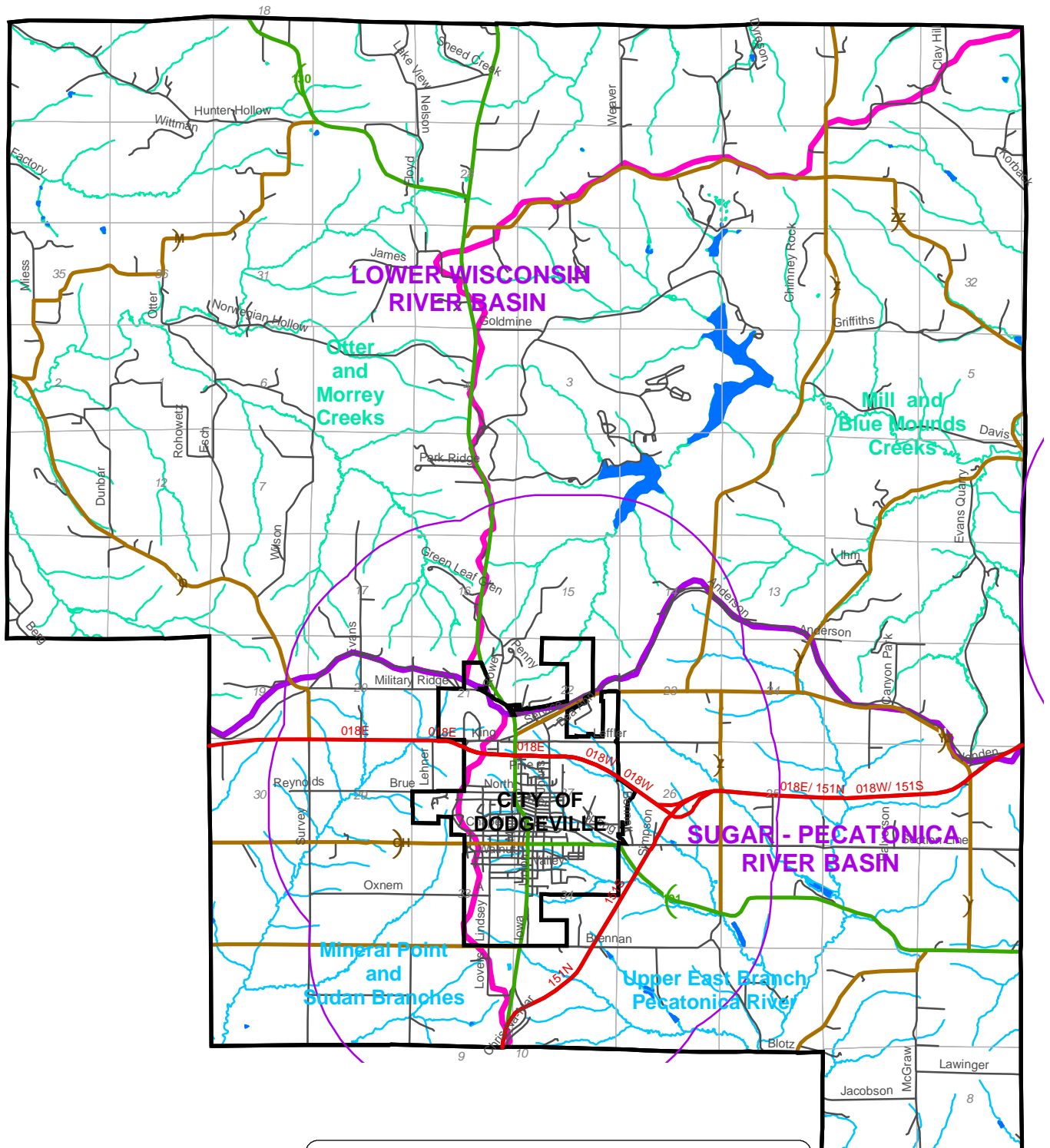
1 inch equals 1.42 miles

This map is neither a legally recorded map  
nor a technical survey and is not intended  
to be one. SWWRPC is not responsible for  
any inaccuracies herein contained.

# TOWN OF DODGEVILLE WATERSHED FLOODPLAIN

## MAP E.4

- IOWA COUNTY, WISCONSIN -



SOUTHWESTERN WISCONSIN  
REGIONAL PLANNING COMMISSION  
719 Pioneer Tower  
1 University Plaza  
Platteville, WI 53818

February 28, 2005

SOURCE: WI-DNR

S:\WGroups\SWWRPC\GIS\IowaCounty\TownsVillagesCities\  
DodgevilleTown\Projects\SmartGrowth\  
E-4WatershedFloodplain05\_DodgevilleTown

### Legend

- |                    |                                |
|--------------------|--------------------------------|
| Municipal Boundary | WATER BASIN BOUNDARY           |
| 1.5 Mile Buffer    | WATERSHED BOUNDARY             |
| Sections           | LOWER WISCONSIN RIVER BASIN    |
| Federal Highway    | SUGAR - PECATONICA RIVER BASIN |
| State Highway      | IOWA COUNTY LAKES              |
| County Road        |                                |
| Local Road/Drive   |                                |

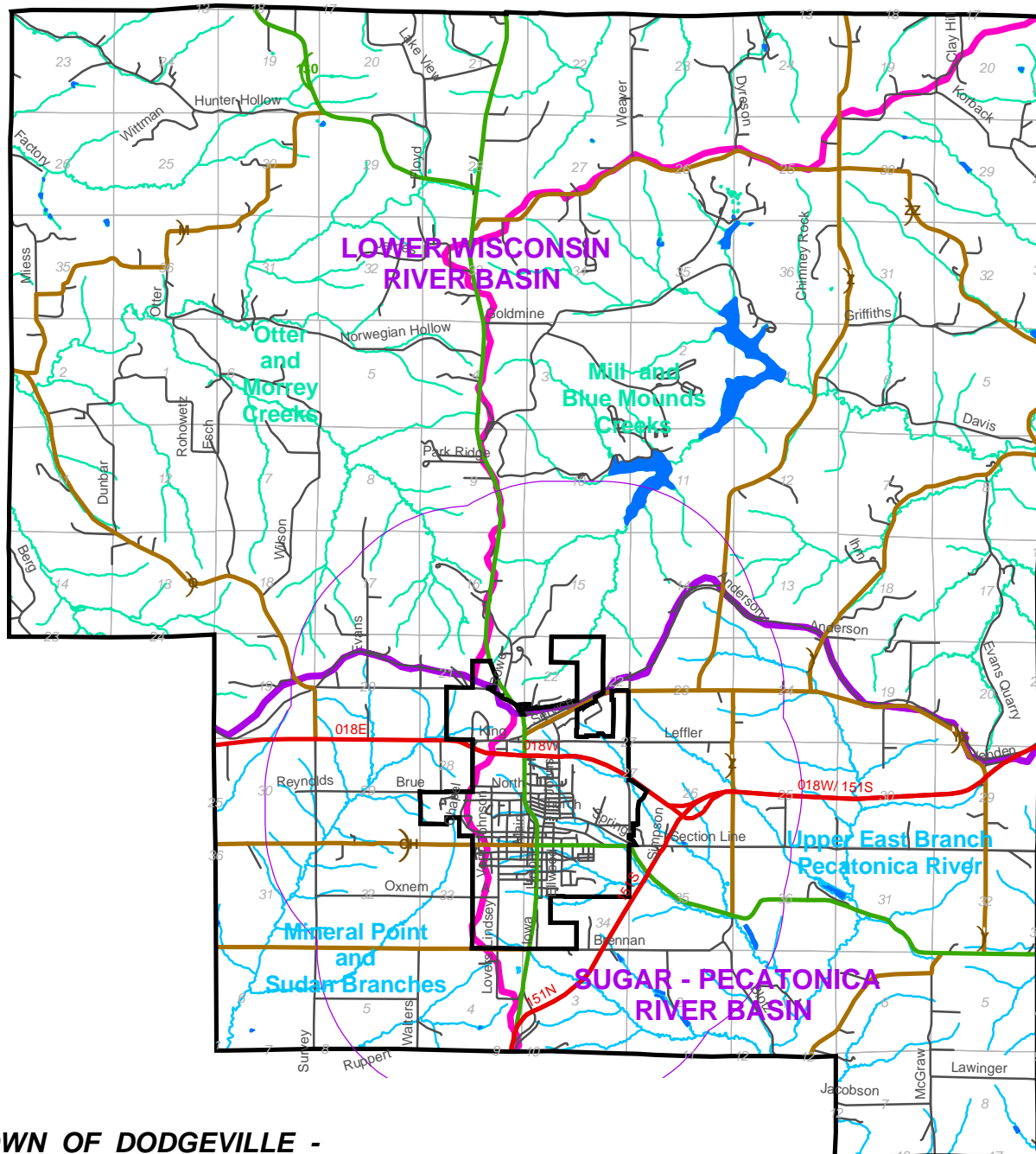
1 inch equals 1.44 miles



This map is neither a legally recorded map nor a technical survey and is not intended to be one. SWWRPC is not responsible for any inaccuracies herein contained.



# FEMA FLOODPLAIN MAP E.5



- TOWN OF DODGEVILLE -

IOWA COUNTY, WISCONSIN



SOUTHWESTERN WISCONSIN  
REGIONAL PLANNING COMMISSION  
719 Pioneer Tower  
1 University Plaza  
Platteville, WI 53818

March 25, 2005

## Legend

- Municipal Boundary
- Sections
- 1.5 Mile ETZ Buffer
- Federal Highway
- State Highway
- County Road
- Local Road/Drive
- WATER BASIN BOUNDARY
- WATERSHED BOUNDARIES
- LOWER WISCONSIN RIVER BASIN
- SUGAR - PECATONICA RIVER BASIN
- GRANT - PLATTE RIVER BASIN
- IOWA COUNTY LAKES

1 inch equals 1.60 miles

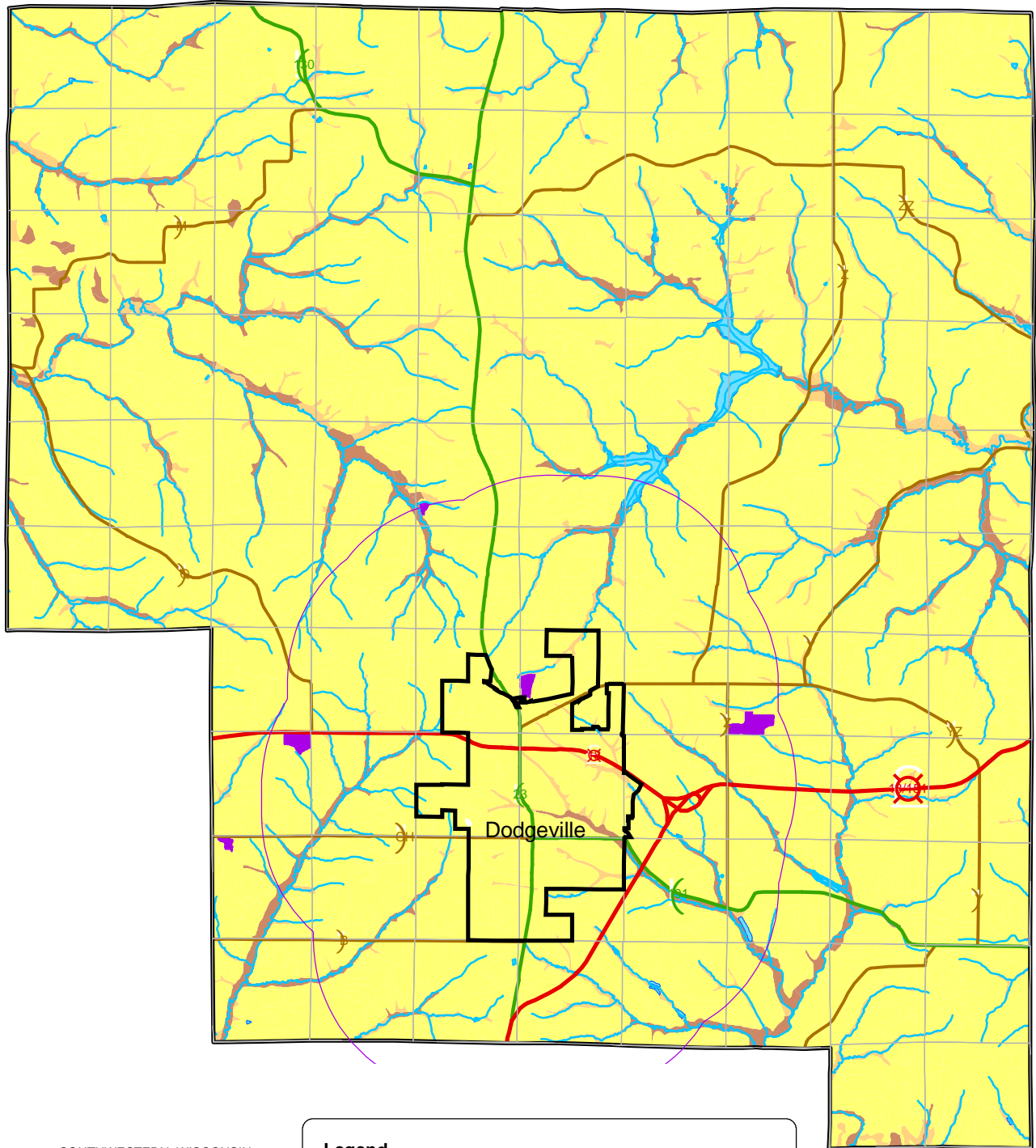


This map is neither a legally recorded map nor a technical survey and is not intended to be one. SWWRPC is not responsible for any inaccuracies herein contained.

# TOWN OF DODGEVILLE DEPTH TO WATER TABLE

- IOWA COUNTY, WISCONSIN -

## MAP E.6



SOUTHWESTERN WISCONSIN  
REGIONAL PLANNING COMMISSION  
719 Pioneer Tower  
1 University Plaza  
Platteville, WI 53818

February 28, 2005

### Legend

- |                           |                                 |
|---------------------------|---------------------------------|
| Boundary04_DodgevilleCity | Greater Than 20' To Water Table |
| 1.5 Mile ETZ Buffer       | From 5' To 20' To Water Table   |
| Sections                  | Less Than 5' To Water Table     |
| Roads Federal             | Quarry                          |
| Roads State               | Rivers And Lakes                |
| Roads County              |                                 |

1 inch equals 1.51 miles



This map is neither a legally recorded map nor a technical survey and is not intended to be one. SWWRPC is not responsible for any inaccuracies herein contained.

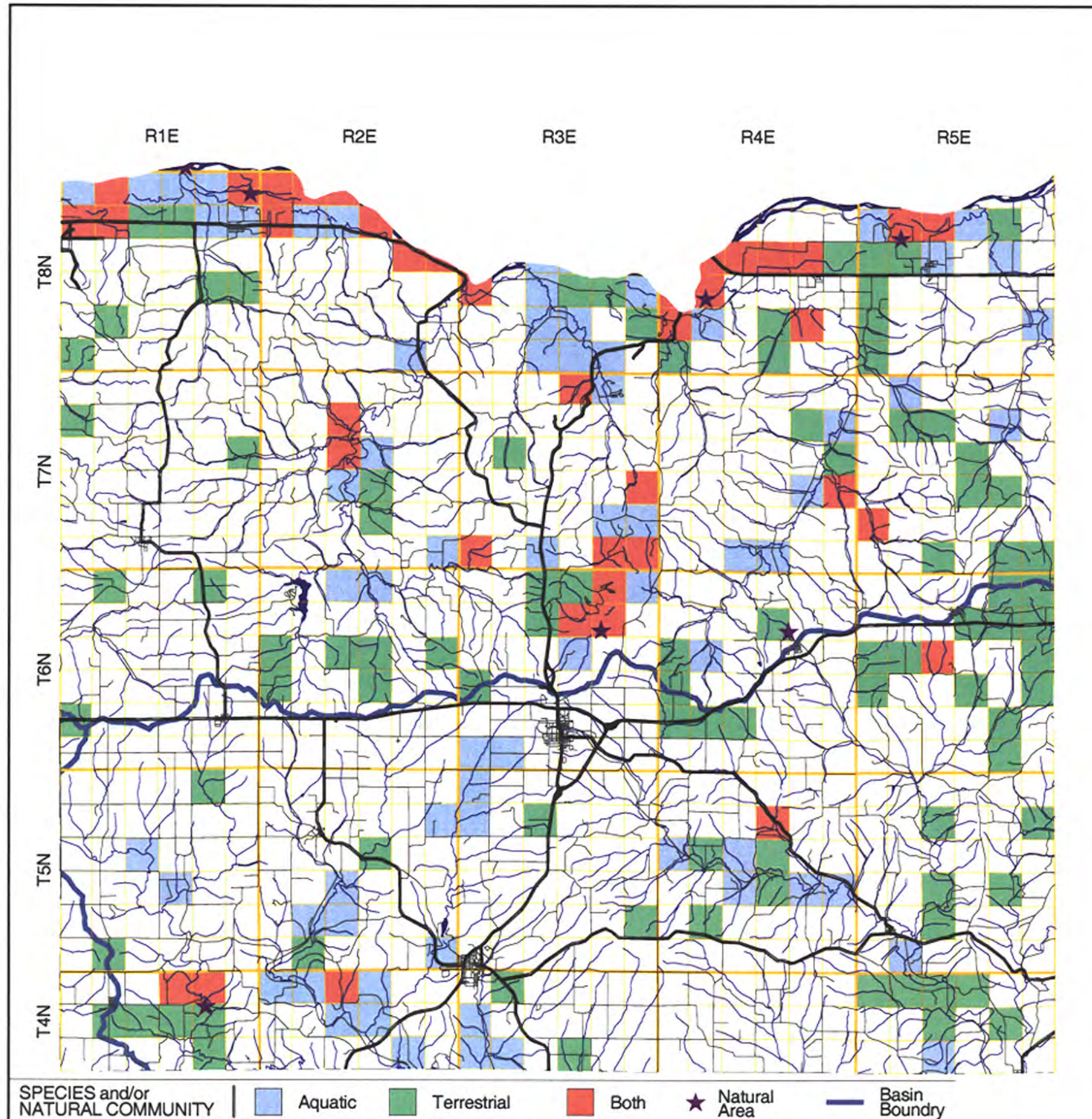
SOURCE: WI-DNR

S:\WGroups\SWWRPC\GIS\IowaCounty\Towns\Villages\Cities\  
DodgevilleTown\Projects\SmartGrowth\E-6Depth-WT03\_DodgevilleTown



# IOWA COUNTY NATURAL HERITAGE INVENTORY (NHI)

## Iowa County



### AQUATIC OCCURRENCES

**ANIMALS**

- Red shouldered hawk, *Buteo lineatus* 1977
- Blanchard's cricket frog, *Acris crepitans blanchardi* 2000
- Rock pocketbook, *Ambystoma contrapunctus* 1967
- Bald eagle, *Haliaeetus leucocephalus* 1962
- Muskrat, *Fiber zibethicus* 1966
- Weed shiner, *Notropis texanus* 1980
- Slender madtom, *Niurus exilis* 1976
- Greater redhorse, *Moxostoma valenciennesi* 1957
- Cyano darter, *Nasichthys pentacanthus* 1964
- Butterfly, *Ellipteris lineolata* 1997
- Buckhorn, *Tritogonia verrucosa* 1997
- Paddlefish, *Polyodon spathula* 1992
- Monkeyface, *Quadrula melaneura* 1968
- Silver chub, *Macrhybopsis storeriana* 1993
- Bending's turtle, *Emydoidea blandingii* 2001
- Ebony shell, *Fusconia ebena* 1985
- Ozark minnow, *Notropis rubellus* 1994
- Smoky shadowfish, *Neurocordulia molestus* 1993
- Shore chub, *Macrhybopsis aestivale* 1994
- Redside dace, *Clinostomus elongatus* 1977
- Pirate perch, *Aphredoderus sayanus* 1996
- Mud darter, *Etheostoma aspinum* 1972
- Black buffalo, *Ictalurus niger* 1962
- Round pigtoe, *Pseudosternus sinuatus* 1997
- Blue crab, *Stellus notatus* 1992
- Bullhead, *Pseudosternus cyphus* 1985
- Silverside, *Silurus asotus* 1968
- Higgins' eye, *Lampisilis higginsii* 1988
- Slough sandshell, *Lampisilis lutes lutes* 1988
- Flat footer, *Anodonta suborbiculata* 1988
- Blue sucker, *Cyprinotus elongatus* 1965
- Goldeneye, *Hirundo alpestris* 1977
- Bullfrog, *Rana catesbeiana* 1994
- Eastern massasauga, *Sistrurus cateratus cateratus* 1965
- Wood turtle, *Clemmys insculpta* 1966
- Starhead lapminnow, *Fundulus dispar* 1992
- Western sand darter, *Etheostoma caeruleum* 1994
- Elkoe, *Alasmidonta marginata* 1986
- Knobel's rifle beetle, *Sternelmia knobeli* 0
- A prehistoric diving beetle, *Loporeus triangularis* 1965
- Dion skipper, *Euphyes dion* 1977

**PLANTS**

- Glade meadow, *Najas dioica* 1996
- Sycamore, *Pteris occidentalis* 1965
- Small forget me not, *Myosotis laxa* 1975
- Whip nuthatch, *Sorbus virginica* 1974
- Yellow screwstem, *Berula virginica* 1924
- Crossleaf milkwort, *Polygala cruciata* 1927
- Showy lady's slipper, *Cypripedium reginae* 1950
- Engelmann spike rush, *Eleocharis engelmannii* 1922
- Pink milkwort, *Polygala incarnata* 1929
- Bog fern, *Thelypteris simulata* 2000
- Virginia meadow beauty, *Rhexia virginica* 1967
- Small white lady's slipper, *Cypripedium candidum* 1999
- Slim stem small reedgrass, *Calamagrostis stricta* 1937
- Schweinitz's sedge, *Carex schweinitzii* 1985
- Grassleaf rush, *Juncus marginatus* 1922

**NATURAL COMMUNITIES**

- Southern sedge meadow 1976
- Emergent aquatic 1976
- Floodplain forest 1968
- Shrub oak 1976
- Ephemeral pond 1976
- Lake oxbow 1976
- Stream test, hard, cold 1976
- Wet mesic prairie 1967

### TERRESTRIAL OCCURRENCES

**ANIMALS**

- Net veined leafhopper, *Polyamia dilata* 1997
- Loggerhead shrike, *Lanius ludovicianus* 1992
- Bell's vireo, *Vireo bellii* 1994
- Eastern pipit, *Pipistratus subellatus* 1997
- Timber rattlesnake, *Crotalus horridus* 1997
- Wild indigo dusky wing, *Erynnis baptisae* 1988
- Red tailed prairie leopards, *Ailurus rubicundus* 1997
- Western harvest mouse, *Reithrodontomys megalotis* 1941
- Upland sandpiper, *Bartramia longicauda* 1998
- Henslow's sparrow, *Ammodramus henslowii* 1996
- Beak grass, *Dianthus obovatus* 2001
- Regal fritillary, *Speyeria idalia* 2001
- Bullsnake, *Pituophis catenifer sayi* 1992
- Ornate box turtle, *Terrapene ornata* 1965
- Bel hibernaculum, *Bel hibernaculum* 1997
- Leonard's skipper, *Hesperia leonardus leonardus* 1996
- Gorgona checker spot, *Chrysone gorgone* 1989
- White tailed jackrabbit, *Lepus townsendii* 1947
- Woodland vole, *Microtus pinelorum* 1937
- Grasshopper sparrow, *Ammodramus savanarum* 1996
- Northern myotis, *Myotis septentrionalis* 1997
- Black rat snake, *Elaphe obsoleta* 1974
- Barn owl, *Tyto alba* 1982
- Western meadowlark, *Sturnella neglecta* 1998
- Acadian flycatcher, *Empidonax virens* 1992
- Notched dusky wing, *Erynnis meritis* 1986
- A prairie leafhopper, *Altuspyga viridula* 1997

**PLANTS**

- Prairie bush clover, *Lespedeza leptostachya* 2001
- Nodding pogonia, *Triphora trianthophora* 1973
- Pomme de prairie, *Picea esculenta* 2000
- Upland boneset, *Eupatorium sessilifolium var brittonianum* 2001
- American lever leaf, *Parthenium integrifolium* 2001
- Lobed spleenwort, *Asplenium pinnatifidum* 1992
- Prairie false dandelion, *Nothocalais cuspidata* 1980
- Prairie indian plantain, *Cacalia lutea* 2000
- One flowered broomrape, *Orobancha uniflora* 1999
- Yellow gentian, *Gentiana alba* 2001
- Purple meadow penstemon, *Thapsalum trilobatum var flavum* 1963
- Twinklet Jeffersonia, *Jeffersonia diphylla* 1991
- Short's rock cress, *Arabis shortii* 2001
- Fire pink, *Silene virginica* 1997
- Woolly milkweed, *Asclepias lanuginosa* 1999
- American groundsel, *Lithospermum latifolium* 2000
- Cluster fescue, *Festuca peruviana* 1941
- Prairie parsley, *Polytaenia nuttallii* 1927
- Heart leaved skullcap, *Scutellaria ovata* 1993
- Clustered broomrape, *Orobancha fasciculata* 1880
- Clustered poppy mallow, *Callirhoe triangulata* 1976
- Hill's thistle, *Cirsium hillii* 2001
- Hooker's orchid, *Platanthera hookeri* 1936
- Butterweed, *Diodes lutes var lutes* 1976
- Broad beech fern, *Phlegopteris hexagonoptera* 1901
- Pale false foxglove, *Agalinis skinneriana* 1999
- Wild hyacinth, *Camassia scilloides* 1995
- Three flower milk grass, *Melica nitens* 1959
- Marbleseed, *Osmorhiza mille* 1996
- Purple milkweed, *Asclepias purpurascens* 2001
- Purple clematis, *Clematis occidentalis* 1901
- Snowy campion, *Silene nivea* 1994
- Richardson's sedge, *Carex richardsonii* 1996
- Pale green orchid, *Platanthera flava var herbicola* 2000
- Great indian plantain, *Cacalia muschbergii* 1996
- Roundstem foxglove, *Agalinis gattlingii* 1974
- Maryland senna, *Cassia marilandica* 1883
- Autumn coral root, *Corallorhiza odoratissima* 1947
- Wilcox panic grass, *Panicum wilcoxianum* 1940
- Yellow evening primrose, *Calyptophus serrulatus* 1968
- Violet bush clover, *Lespedeza violacea* 1961
- Small flowered woolly bean, *Strophostyles kieseppiae* 1971

**NATURAL COMMUNITIES**

- Pine relict 1965
- Southern dry mesic forest 1992
- Oak opening 1966
- Southern mesic forest 1976
- Moist cliff 1976
- Dry cliff 1976
- Dry prairie 2001
- Dry mesic prairie 1987
- Mesic prairie 1996
- Hemlock relict 1976
- Sand barrens 1976
- Sand prairie 1997
- Pine barrens 1976

MAP E.7a

## THREATENED & ENDANGERED (T&E) Aquatic & Terrestrial Species and/or Natural Communities

This map represents the known occurrences of rare species and natural communities that have been recorded in the Wisconsin Natural Heritage Inventory (NHI). Colored sections indicate the presence of one or more occurrences within that section. Townships shaded in the inset map to the left indicate one or more occurrences reported only at the township level. The date following the names above notes the most recent year the occurrence was recorded in the county.

Map generated using 01/14/2002 NHI data.  
Copyright 2002, WDNR-Bureau of Endangered Resources  
This map may not be reproduced without prior written permission





THREATENED AND ENDANGERED  
(T & E) PLANTS AND NATURAL COMMUNITIES

MAP E.7-b

Legend

- Military Ridge Prairie Heritage Area
- State Natural Areas
- T & E Plants
- T & E Natural Communities
- Forest
- Urban Developed
- Rivers

1 inch equals 3.05 miles



SOUTHWESTERN WISCONSIN  
REGIONAL PLANNING COMMISSION  
719 Pioneer Tower  
1 University Plaza  
Platteville, WI 53818  
June 7, 2004

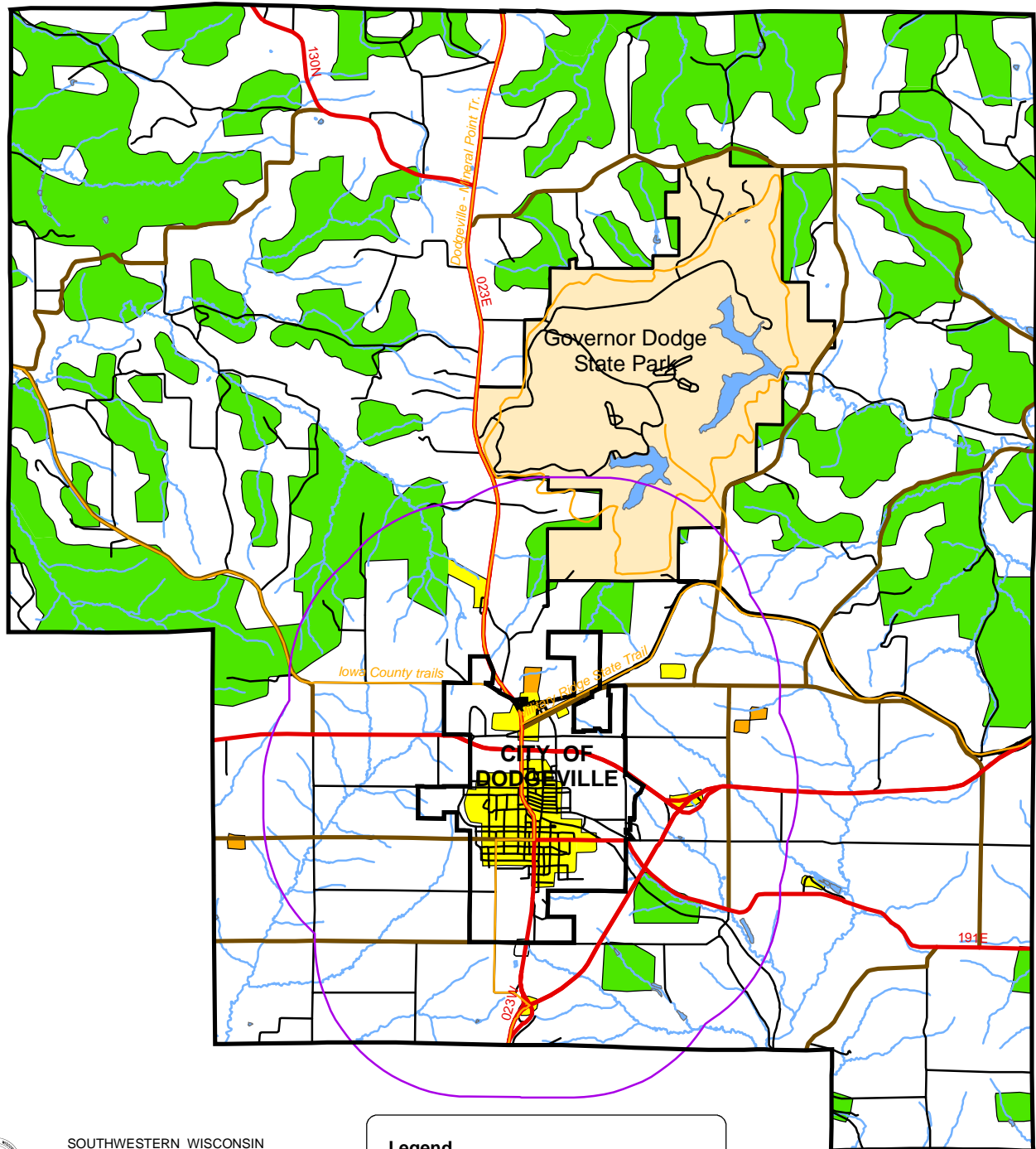
This map is neither a legally recorded map  
nor a technical survey and is not intended  
to be one. SWWRPC is not responsible for  
any inaccuracies herein contained.



# NATURAL RESOURCES AND ENVIRONMENTAL CORRIDORS

- DODGEVILLE TOWNSHIP -  
- IOWA COUNTY, WISCONSIN -

MAP E.8



SOUTHWESTERN WISCONSIN  
REGIONAL PLANNING COMMISSION  
719 Pioneer Tower  
1 University Plaza  
Platteville, WI 53818

February 28, 2005

## Legend

Municipal Boundary	Parks
1.5 Mile ETZ Buffer	Agriculture
Major Highways	Barren/Quarry
County Highways	Forest
Local Roads/Drives	Urban Developed
Recreation Trails	Lakes And Rivers

1 inch equals 1.53 miles



This map is neither a legally recorded map nor a technical survey and is not intended to be one. SWWRPC is not responsible for any inaccuracies herein contained.

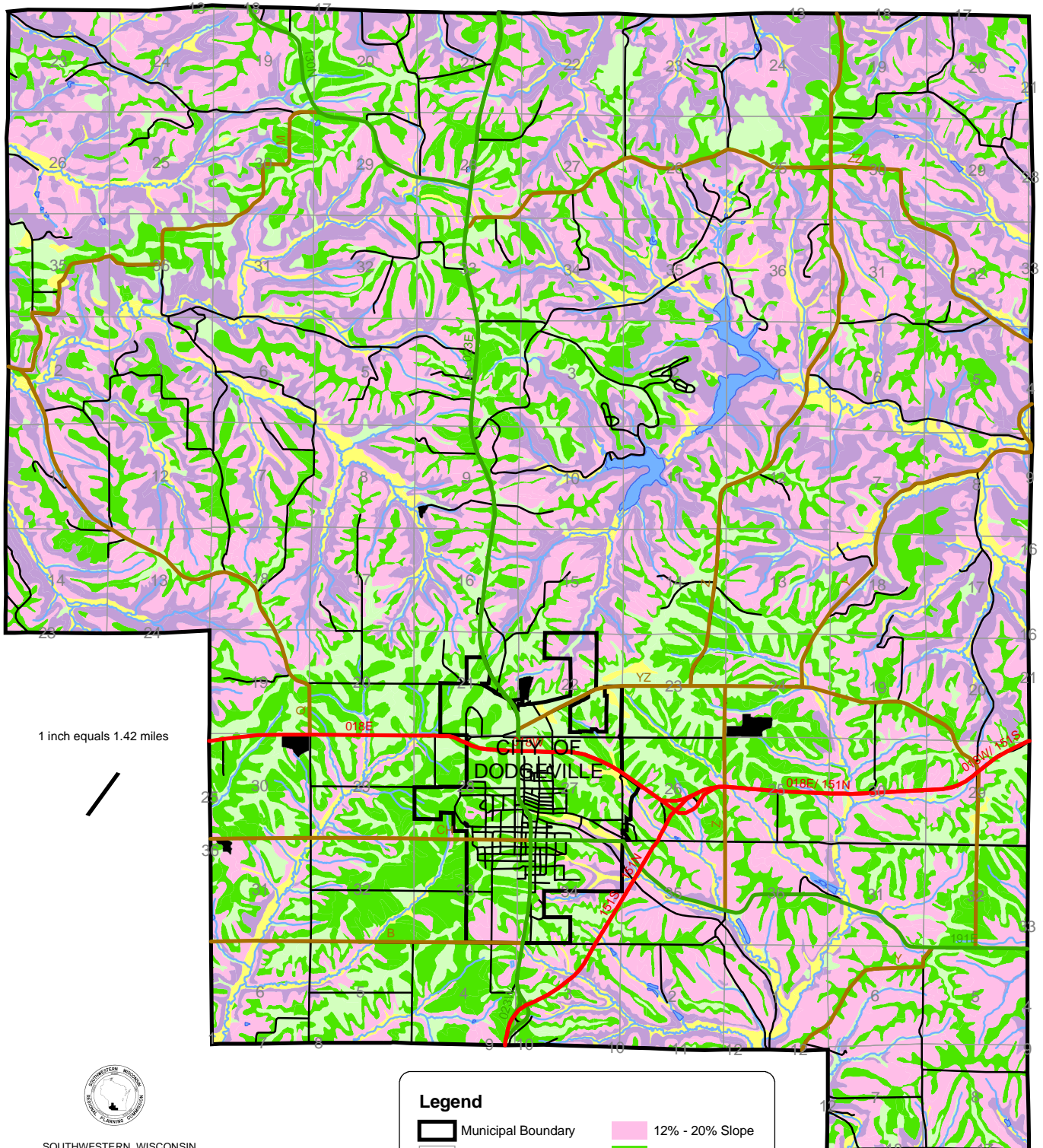
SOURCE: WI-DNR

S:\WGroups\SWWRPC\GIS\IowaCounty\TownshipsVillagesCities\  
DodgevilleTown\Projects\SmartGrowth\E-8EnviroCor03\_DodgevilleTown

# DODGEVILLE SLOPE LIMITATIONS

- IOWA COUNTY, WISCONSIN -

MAP E.9



1 inch equals 1.42 miles



SOUTHWESTERN WISCONSIN  
REGIONAL PLANNING COMMISSION  
719 Pioneer Tower  
1 University Plaza  
Platteville, WI 53818

February 28, 2005

SOURCE: USDA Soil Survey

S:\WGroups\SWWRPC\GIS\Iowa County\Towns\Villages\Cities\  
DodgevilleTown\Projects\SmartGrowth\E-9SlopeLim03\_DodgevilleTown

## Legend

- Municipal Boundary
- Sections
- US Highways
- State Highways
- County Highways
- Local Roads/Drives
- Greater Than 20% Slope
- 12% - 20% Slope
- 6% - 12% Slope
- 2% - 6% Slope
- 0% - 2% Slope
- Other Features
- Rivers And Lakes

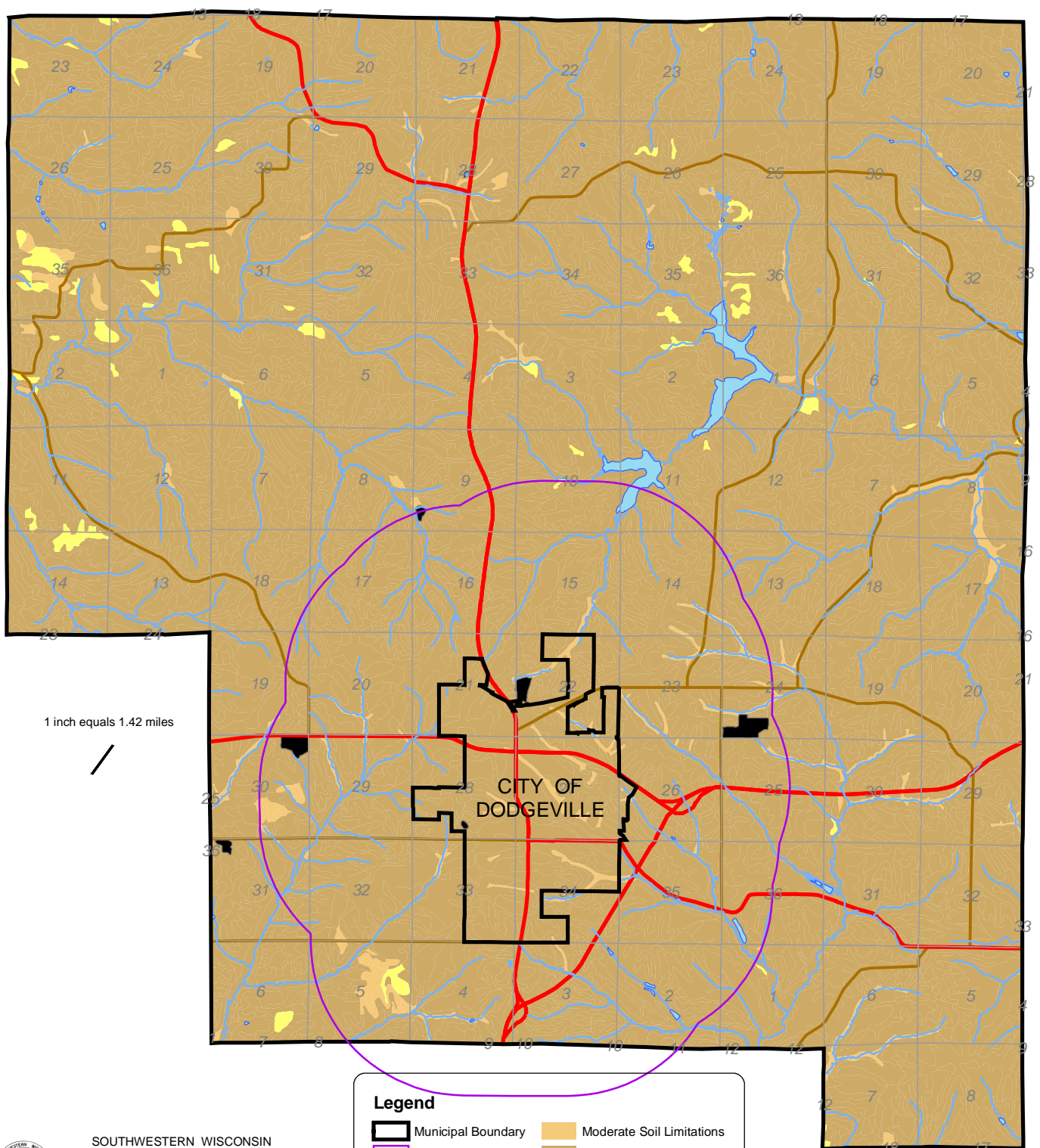
This map is neither a legally recorded map nor a technical survey and is not intended to be one. SWWRPC is not responsible for any inaccuracies herein contained.



# DODGEVILLE SEPTIC LIMITATIONS

- IOWA COUNTY, WISCONSIN -

## MAP E.10



1 inch equals 1.42 miles



SOUTHWESTERN WISCONSIN  
REGIONAL PLANNING COMMISSION  
719 Pioneer Tower  
1 University Plaza  
Platteville, WI 53818

February 28, 2005

SOURCE: USDA Soil Survey

S:\WGroups\SWWRPC\GIS\IowaCounty\Towns\Villages\Cities\  
DodgevilleTown\Projects\SmartGrowth\E-10SepticLim03\_DodgevilleTown

### Legend

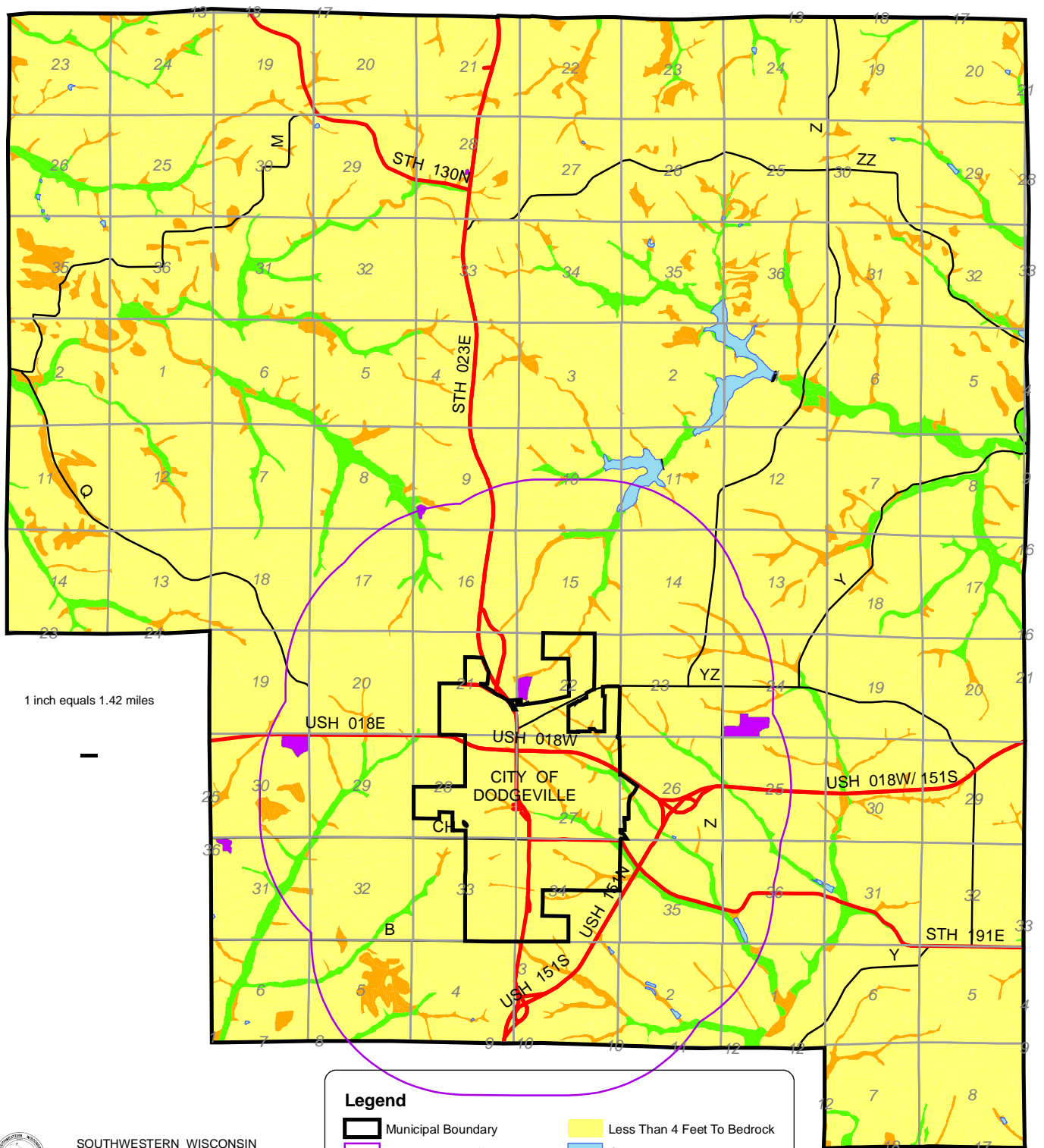
- Municipal Boundary
- 1.5 Mile ETZ Buffer
- Sections
- US Highways
- State Highways
- County Highways
- Slight Soil Limitations
- Moderate Soil Limitations
- Severe Soil Limitations
- Other Features
- Open Water

This map is neither a legally recorded map nor a technical survey and is not intended to be one. SWWRPC is not responsible for any inaccuracies herein contained.

# TOWN OF DODGEVILLE DEPTH TO BEDROCK

- IOWA COUNTY, WISCONSIN -

## MAP E.11



### Legend

- |                              |                             |
|------------------------------|-----------------------------|
| Municipal Boundary           | Less Than 4 Feet To Bedrock |
| 1.5 Mile ETZ Buffer          | Open Water                  |
| Sections                     | Quarries                    |
| Major Highways               | Other Features              |
| County Highways              |                             |
| More Than 20 Feet To Bedrock |                             |
| From 4 To 20 Feet To Bedrock |                             |



SOUTHWESTERN WISCONSIN  
REGIONAL PLANNING COMMISSION  
719 Pioneer Tower  
1 University Plaza  
Platteville, WI 53818

February 28, 2005

SOURCE: USDA Soil Survey

S:\WGroups\SWWRPC\GIS\IowaCounty\Towns\Villages\Cities\  
DodgevilleTown\Projects\SmartGrowth\E-11Depth-BR03\_DodgevilleTown

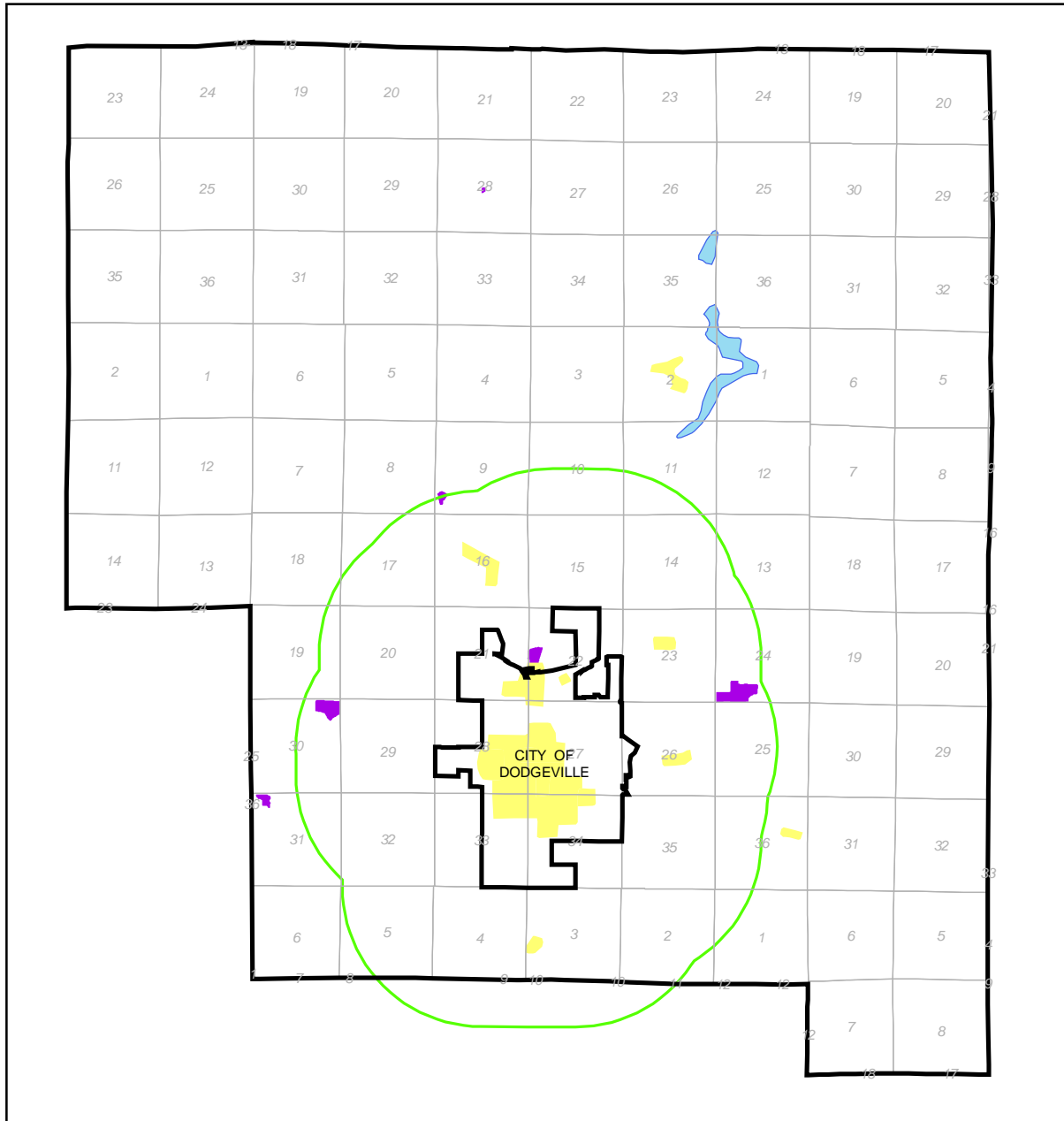
This map is neither a legally recorded map nor a technical survey and is not intended to be one. SWWRPC is not responsible for any inaccuracies herein contained.



# MINES AND QUARRIES

- TOWN OF DODGEVILLE -  
- IOWA COUNTY, WISCONSIN -

## MAP E.12



SOUTHWESTERN WISCONSIN  
REGIONAL PLANNING COMMISSION  
719 Pioneer Tower  
1 University Plaza  
Platteville, WI 53818

March 1, 2005

### Legend

- Municipal Boundary
- Sections
- 1.5 Mile ETZ Buffer
- Developed/Urban
- Mines
- Quarries
- Open Water

1 inch equals 1.83 miles



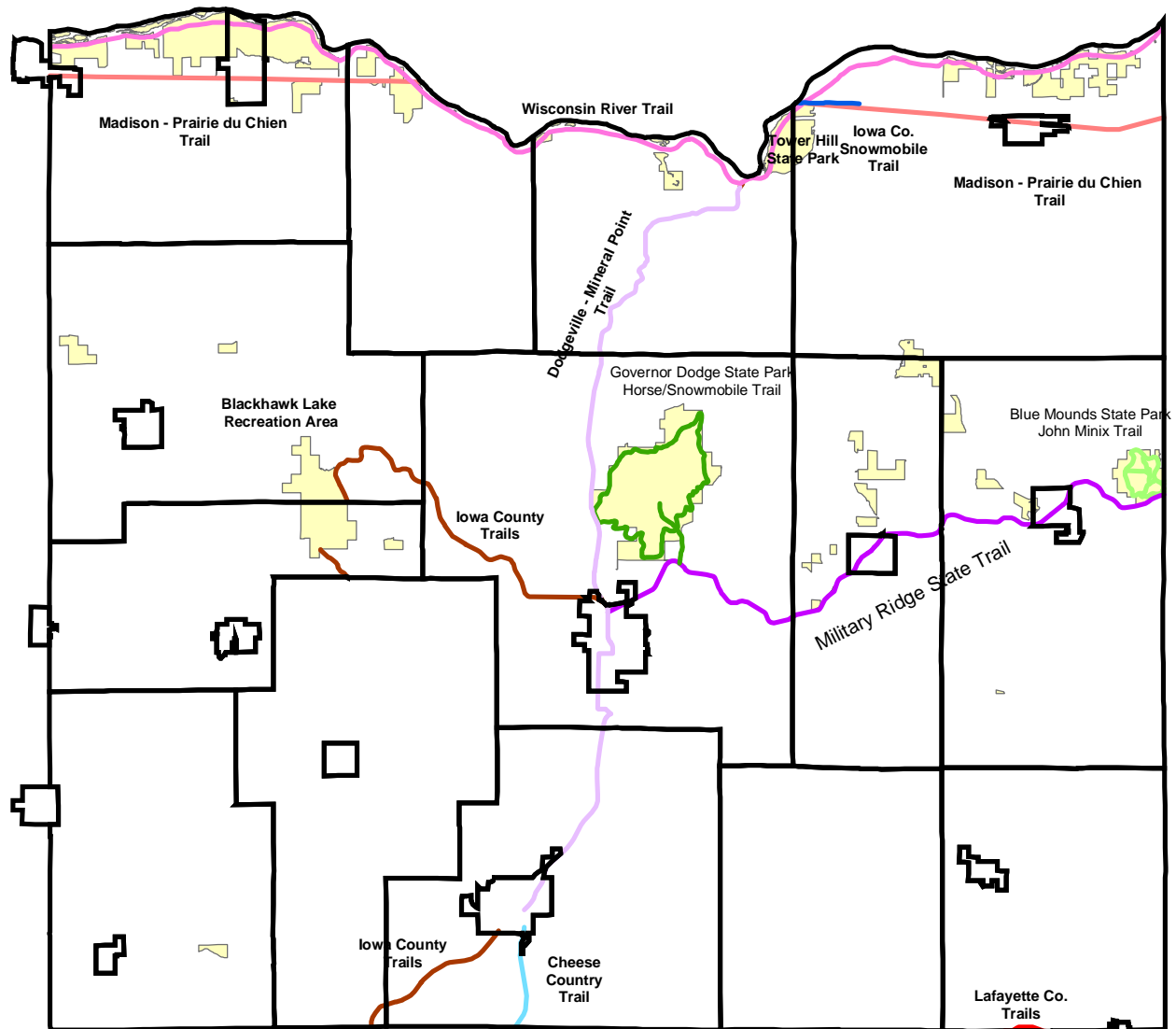
SOURCE: USDA Soil Survey and WI-DNR

S:\WGroups\SWWRPC\GIS\IowaCounty\Towns\Villages\Cities\  
Projects\SmartGrowth\E-12Mines-Quarries05\_DodgevilleTown

This map is neither a legally recorded map nor a technical survey and is not intended to be one. SWWRPC is not responsible for any inaccuracies herein contained.

# IOWA COUNTY RECREATIONAL TRAILS AND PARKS

## MAP E.13



### Legend

- Blue Mounds State Park - John Minix Trail
- Cheese Country Trail - Railroad Corridor
- Gov Dodge State Park - Horse-Snowmobile Trail
- Iowa County Snowmobile Trails
- Military Ridge State Trail - Railroad Corridor
- Dodgeville-Mineral Point Trail - Road Corridor
- Iowa County Trails - Road Routes - Planned
- Lafayette County Trails - Road Routes - Planned
- Madison-Prairie du Chien Trail - Road Corridor - Planned
- Wisconsin River Trail - River Corridor - Planned
- Iowa County Parks

1 inch equals 4.79 miles



SOUTHWESTERN WISCONSIN  
REGIONAL PLANNING COMMISSION  
719 Pioneer Tower  
1 University Plaza  
Platteville, WI 53818

February 26, 2004

This map is neither a legally recorded map nor a technical survey and is not intended to be one. SWWRPC is not responsible for any inaccuracies herein contained.

- TOWN OF DODGEVILLE -  
- IOWA COUNTY, WISCONSIN -

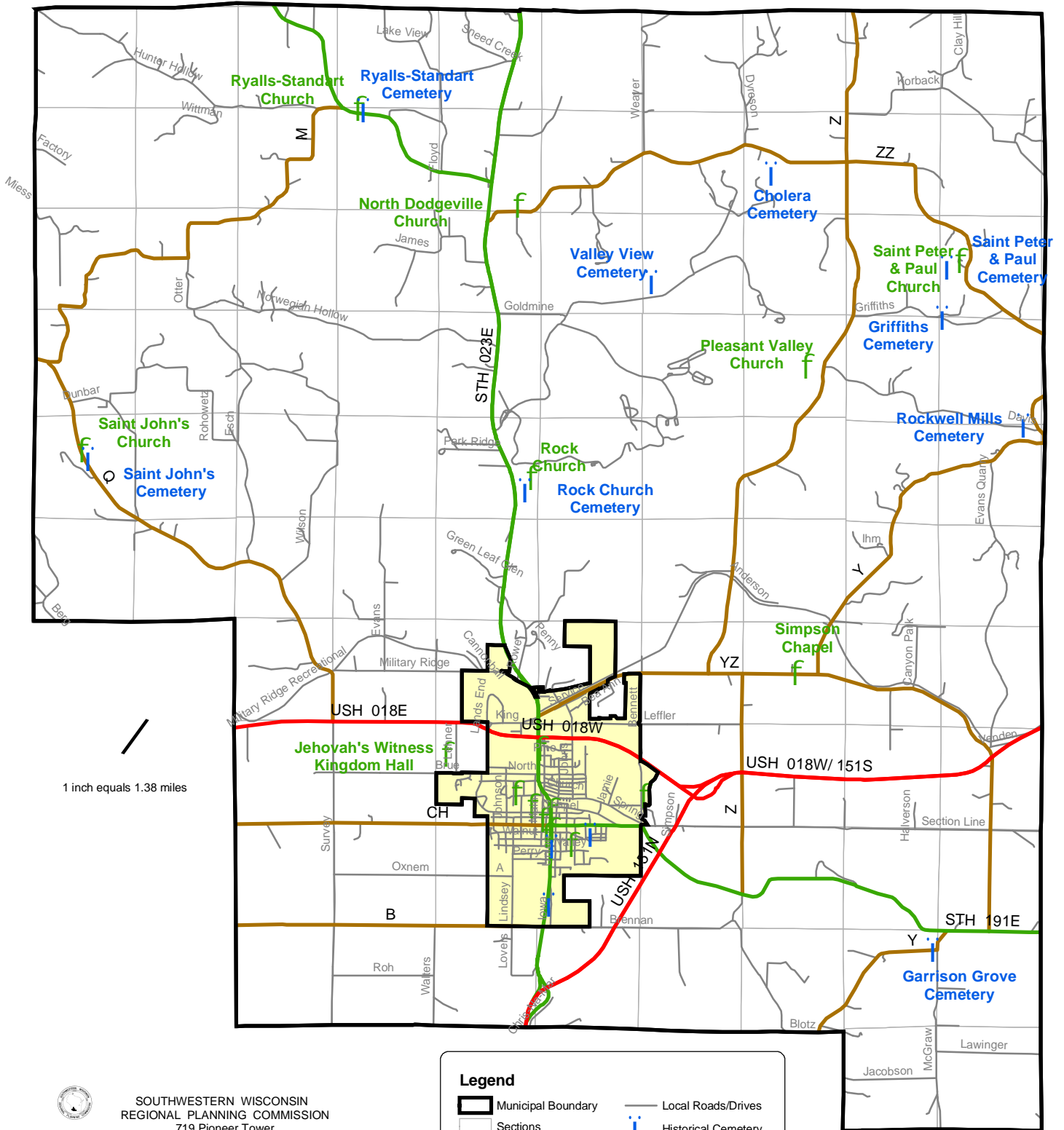
[illegible]

S:\WGroups\SWWRPC\GIS\IowaCounty\TownsVillagesCities\  
DodgevilleTown\Projects\SmartGrowth\E-14RuralSch04 DodgevilleTown

# CEMETERY AND CHURCH LOCATIONS

- TOWN OF DODGEVILLE -  
- IOWA COUNTY, WISCONSIN -

## MAP E.15



SOUTHWESTERN WISCONSIN  
REGIONAL PLANNING COMMISSION  
719 Pioneer Tower  
1 University Plaza  
Platteville, WI 53818

December 2, 2004

S:\WGroups\SWWRPC\GIS\Towns\Villages\Cities\  
DodgevilleTown\Projects\SmartGrowth\E-15Cem-Ch04\_DodgevilleTown

This map is neither a legally recorded map  
nor a technical survey and is not intended  
to be one. SWWRPC is not responsible for  
any inaccuracies herein contained.