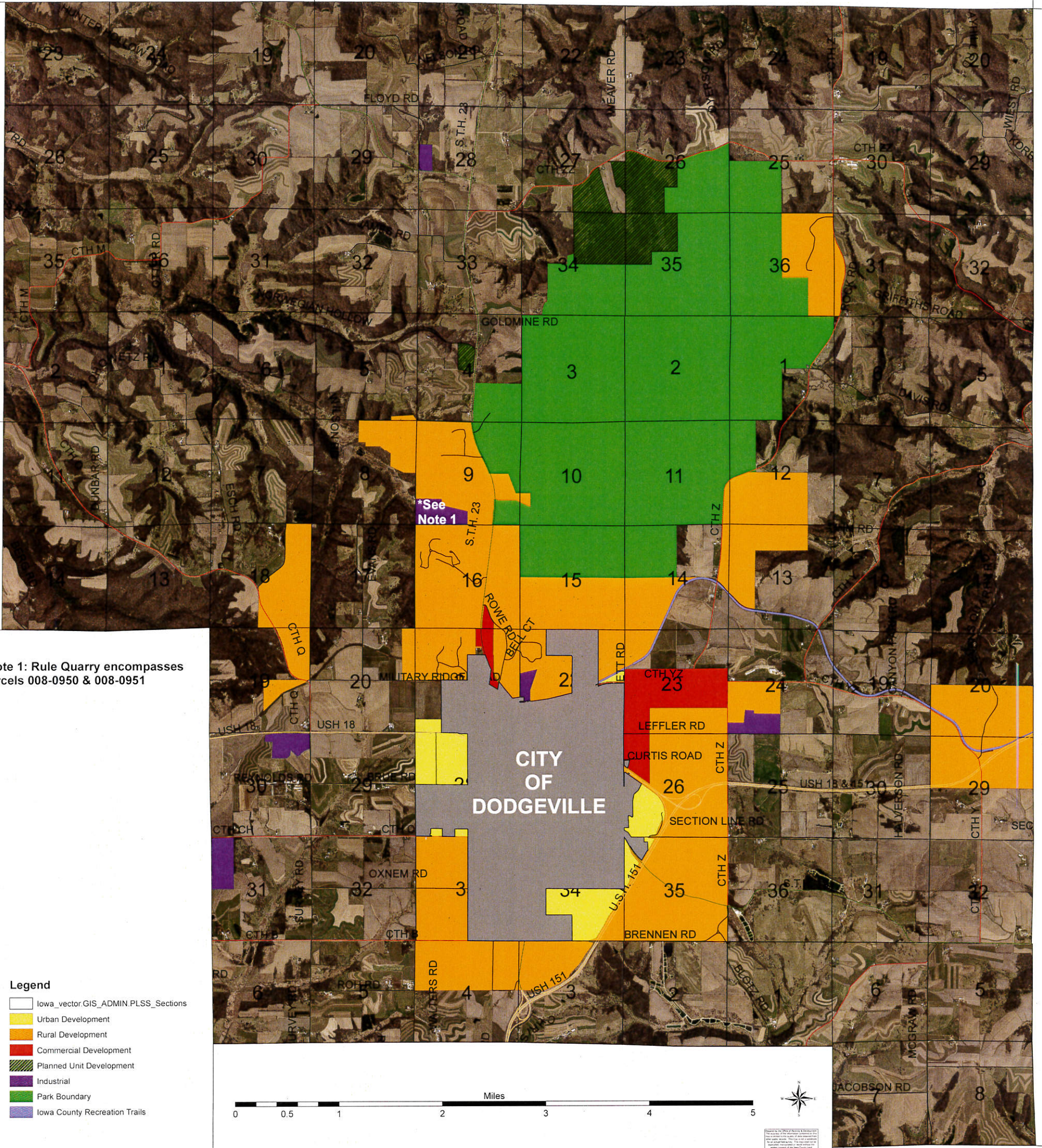


LAND USE MAP H.1
TOWN OF DODGEVILLE
-IOWA COUNTY, WISCONSIN-



*Note 1: Rule Quarry encompasses parcels 008-0950 & 008-0951

*See Note 1

Legend

- Iowa_vector.GIS_ADMIN.PLSS_Sections
- Urban Development
- Rural Development
- Commercial Development
- Planned Unit Development
- Industrial
- Park Boundary
- Iowa County Recreation Trails



Map prepared by the Town of Dodgeville, Wisconsin, using GIS data provided by the Wisconsin Department of Transportation. The map is for informational purposes only and does not constitute a contract or warranty of any kind. The Town of Dodgeville is not responsible for any errors or omissions on this map.