

# MRF TURF

## Summer 2024

The Quarterly Newsletter of the Manitowoc County Recycling Center & Compost Sites



### IN THIS ISSUE

FOOD WASTE REDUCTION 1,2

WDNR: HOME COMPOST MATERIALS 3

CLEAN SWEEP RESULTS 4

LAMP RECYCLING 5

LITHIUM BATTERY DISPOSAL 5

TIRE COLLECTION 6

HOME COMPOSTER 6

RECYCLING DEPOT GUIDELINES 7

ELECTRONIC NEWSLETTER REQUEST 7

SCRAP METAL DUMPSTER 7

### FOOD WASTE REDUCTION

The USDA defines food waste as "The edible amount of food, postharvest, that is consumable but is not consumed for any reason." Globally, an estimated 2.5 billion tons of food is wasted every year equivalent to 5,000,000,000,000 pounds. The United States contributes 60-70 million tons or 120 billion pounds of food waste on average each year alone.



In Wisconsin, the DNR estimates residents and businesses discard 854,000 tons of food based on their 2020-2021 study. The DNR surveyed 14 Wisconsin landfills and found 30.4% of the waste contents were organics, of that percentage, 14.1% was food waste and 5.5% was food scraps. Of that food found in Wisconsin landfills, 70% of it was still edible.

So what can you do to help as a consumer? That will depend on your personal circumstances, some people may have unique ways to address this for themselves or their families. We have put together some common strategies for you to consider.

### Reduce at the Source

On average, people throw away around 25% of the food they purchase, costing them an estimated \$1,800 to \$2,000 every year. Some suggestions that may help use up your food are:

- Properly store food to extend the lifespan of the product by freezing, refrigerating, etc.
- Keep inventory by tracking what foods you have in your fridge, freezer, and pantry to minimize overbuying and prioritize use of older products you have.
- Learn what the labels of food products mean! 60% of Americans throw away edible food from misinterpreting a label as an expiration date.
  - Best if Used By/Before: Indicates time of best flavor and quality. Does not refer to safety.
  - Use-By: Recommended use of product for peak quality. Only refers to safety for infant formula.
  - Sell-By: Indication for the store on how long to display item for inventory. Does not refer to safety.
- Get creative with your cooking and leftovers! Use leftovers, produce and other foods you plan to throw away to make new meals. Resources online can help you with ideas and meal planning.
- Shop your kitchen first to determine what meals you can make with what you have and determine what you need based on what is being used.
- Stick to a list of items you need and the quantity. Avoid overbuying and purchasing in bulk. It's only a deal if you eat it all!
- Skip the perfect produce and buy the smaller, misshapen or miscolored foods. Looking past the cosmetic standards, all produce has the same taste and nutritional value!

*Continued on page 2.*

### Mission Statement

To provide materials recycling and recovery services to the citizens of Manitowoc County and to keep the public informed about recycling issues.



**Manitowoc County Recycling Center & Compost Sites**

3000 Basswood Road, Manitowoc WI

920-683-4333

[Recycling.manitowoccountyiwi.gov](http://Recycling.manitowoccountyiwi.gov)



### Donate to Food Banks

The United States throws out 50% of the food produced, which means we have enough food to feed roughly two American populations and yet an estimated 50 million Americans are food insecure. Food Banks provide a space to donate food for people and families in need. A nutritious way to help your community and prevent food waste. Always call ahead before donating to confirm items and ask questions, and avoid donating spoiled or expired foods.

#### Peter's Pantry

920-682-6989

843 S. 21st St. Manitowoc, WI  
Open: Monday 4PM—6PM, and  
Tues, Thurs, Fri 9:30AM—11:30AM  
Accepting: Canned goods, dried foods,  
and fresh fruits and vegetables.

#### Grow It Forward

920-645-9467

1501 Marshall St. Manitowoc, WI  
Open: Mon-Fri 9AM—5PM  
Accepting: Fresh fruits and vegetables,  
dairy products, canned foods,  
grains, and dried foods.

#### TR Ecumenical Pantry

920-793-5364

1902 22nd St. Two Rivers, WI  
Open: Mon, Fri 8:30AM—12PM, and  
Wednesday 9AM—12:30AM  
Accepting: Canned goods, dried foods, canned  
meats, soups, beverages, fresh produce, etc.

### Compost at Home

As food waste in landfills rots and decomposes, it releases methane, a gas that has 28-80 times the potency of carbon dioxide. According to the EPA, food waste in landfills causes 58% of landfill methane emissions. If food cannot be repurposed or donated, a final solution to prevent food waste in landfills is composting.

Compost is product of microorganisms decomposing organic materials such as green materials rich in nitrogen including food scraps and lawn clippings; and brown materials rich in carbon including dry leaves, twigs and more in an oxygenated environment. This biological process creates a nutrient rich application for soil that can be used to grow new produce and plants. Composting greatly reduces methane emissions, reduces landfill mass, and increases plant growth.

#### How to compost:

- Add scraps to a compost bin outside
- For every 1 part of "green" add 2-3 parts "brown" materials
- Water between layers to retain dampness if needed
- Maintain heat for faster composting (~140 degrees)
- Turn and mix the contents weekly for about 6 weeks
- Then turn every other week for 2 months
- Allow compost to cure for 2-6 months, turn it if needed
- Add brown matter to help with moisture or orders

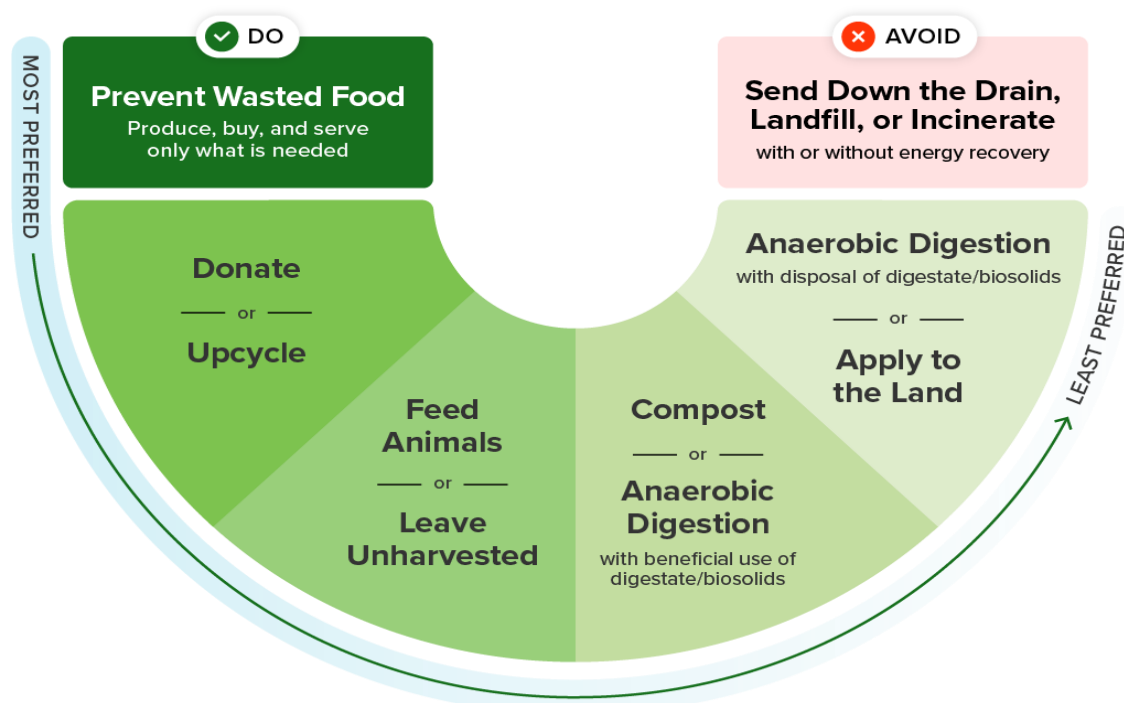
Green Materials	Brown Materials
Fruits and vegetables	Dry leaves
Coffee grounds & filters	Shredded uncoated paper
Grass clippings	Small twigs and plant stems
Flowers, pumpkins	Plain shredded cardboard

Once complete you should have a dark, nutrient rich addition for houseplants, gardening, or soil improvement. For more details and information on composting at home, refer to the Wisconsin DNR Information on the next page.



## Wasted Food Scale

How to reduce the environmental impacts of wasted food





# HOME COMPOSTING MATERIALS



## COMPOST



**COMPOST TIP**

Chopping or shredding these items helps speed up the composting process.

For best results, composters can mix in 2 to 3 volumes of "brown" material with each volume of "green" material.

### Carbon-Rich "Browns"

#### Brown leaves & yard waste

- Brush & twigs (1/2" in diameter or less)
- Cardboard (dry and clean)
- Egg cartons (shredded)
- Newspaper
- Nuts & nut shells (but **not** black walnuts)
- Paper towels
- Pine cones & pine needles
- Sawdust & shavings (from non-treated wood)
- Straw & hay
- Wood chips

### Nitrogen-Rich "Greens"

#### Green leaves & yard waste

- Coffee beans, grounds & used filters
- Dirt & potting soil
- Egg shells
- Flowers & yard plants
- Fruit, including cores & rinds
- Grass clippings
- Gourds & pumpkins
- Melons and melon rinds
- Tea leaves & tea bags
- Vegetables, greens & legumes



## NOT FOR COMPOST



### Not for Home Composting

- Biodegradable forks, spoons & knives
- Branches or logs more than 6" in diameter
- Charcoal briquettes or briquette ash
- Cigar & cigarette ashes
- Coffee or beverage cups
- Diapers
- Dairy products (butter, milk, cheese, etc.)
- Invasive weeds and plants
- Meat (cooked or raw) & bones
- Oils, greases & fats (including snack chips)
- Pet food
- Pet or human waste
- Pizza boxes with grease or cheese on them
- Recyclables (glass, plastic, metal cans, etc.)
- Sawdust from treated wood
- Trash (wrappers, packaging, etc.)
- Used take-out containers & Styrofoam shells
- Wood treated with varnish or paint

For more, visit [dnr.wi.gov](http://dnr.wi.gov) & search "compost," or consult other DNR publications, *Home Composting: Reap A Heap of Benefits* & *Home Composting: The Basic Composter*.

The Wisconsin Department of Natural Resources provides equal opportunity in its employment, programs, services and functions under an Affirmative Action Plan. If you have questions, please write to Equal Opportunity Office, Department of Interior, Washington, D.C. 20240. This publication is available in alternative format (large print, Braille, audiotape etc.) upon request. Please call 608-266-2111 for more information. WA-1785 2015





### CLEAN SWEEP RESULTS

The Manitowoc County Department of Public Works and Manitowoc County Recycling Center would like to thank all the participants and volunteers of the Hazardous Waste Clean Sweep program.

Clean Sweep is an annual collection event for hazardous waste items commonly found in households and farms, such as pesticides, solvents, cleaners, and oil based paints. Since it started in 1985, households and farms have turned in 1,220,828 pounds of unwanted chemicals.

This year the collection had 536 households, 12 farms, and 15 businesses participate and collected a total of 46,379 pounds of hazardous waste. Households turned in 31,242 pounds of hazardous chemicals. Farms turned in 4,139 pounds. Most of the items turned in were old solvents/thinners, though a significant amount of pesticides and oil-based paints were also dropped off. The business portion of Clean Sweep served 15 local businesses who qualified as "Very Small Quantity Generators" under the program. These businesses brought in 10,998 pounds of hazardous waste. Businesses are offered a substantial discount when they bring their materials to the Clean Sweep event. Overall, there was a 53% increase in the amount of chemicals collected compared to last year.

All of the collected items are properly recycled, neutralized or disposed of at special disposal sites or hazardous waste incinerators that render the materials harmless.

Clean Sweep is made possible partly through grant funding from the Wisconsin Department of Agriculture, Trade and Consumer Protection, a donation from the Ridgeview Landfill and volunteer labor. The Manitowoc County Recycling Center has a number of programs throughout the year that you can use to help our environment and clean up at home including Composting and Drug Disposal programs, an ongoing Electronics Collection, a Tire Collection as well as the Hazardous Waste Clean Sweep event.

To learn more about these and other programs visit [Recycling.manitowocountywi.gov](https://Recycling.manitowocountywi.gov).

2024 Hazardous Waste	
Catagory	Pounds
Pesticides/Poisons	7,175
Lead/Oil Based Paint	7,025
Caustics/Corrosives	811
Reactives	28
Solvents/Thinners	14,120
Waste Oil	0
PCBs	0
Aerosol Cans	1,460
Mercury	17
Dioxins	10
Other	596
Agricultural	4,139
VSGQ Business	10,998
<b>TOTAL POUNDS</b>	<b>46,379</b>



*The Hazardous Waste Clean Sweep event has a list of about 50 chemicals that are Cancelled, Suspended, or Banned Pesticides or other Chemicals of Concern. One of those items is DDT based insecticides. DDT was cancelled by the EPA in 1972 due to health and environmental effects, including the decline of many birds of prey like Bald Eagles and Peregrine Falcons. While DDT is not common anymore, it does show up at our collections.*

*All incoming chemicals at the Hazardous Waste Clean Sweep event are identified, categorized, packaged, labeled, and manifested according to all applicable state and federal regulations involved in their trip to the final treatment/disposal facility. This includes regulations under the federal Resource Conservation and Recovery Act (RCRA) as well as the Wisconsin Department of Transportation (DOT) and Department of Natural Resources (DNR). This is done by trained staff... as it is unloaded from the vehicles.*



LAMP RECYCLING is one of the services provided by the Manitowoc County Recycling Center's ongoing electronics collection program. Some lamps, including fluorescent tubes, compact fluorescent bulbs and high intensity discharge bulbs, contain small amounts of mercury that can be harmful to human health and the environment when they are disposed of in the trash. Even incandescent bulbs contain lead, which is also a toxic metal. All the materials in these bulbs can be recycled.

During 2023 the Recycling Center collected approximately 14,889 bulbs from residents and businesses. Once received, the bulbs are carefully packaged for shipping to a specialized recycling facility where hazardous materials are safely removed. All the materials in these bulbs can be recycled without generating much waste. Even the hazardous materials, like mercury, can be recovered.

Bring your burnt out lamps and ballasts to main office at the Manitowoc County Recycling Center. When transporting large amounts of fluorescent tubes secure them in boxes or by taping them together in manageable bundles using an easy release masking or painter's tape (no duct tape).

Item	Fee
4 ft. Fluorescent Lamps	\$0.45 each
8 ft. Fluorescent Lamps	\$0.55 each
Compact Fluorescent Lamps	\$0.45 each
High Intensity Discharge (HID) Lamps <i>(Including Sodium, Metal Halides, &amp; Mercury Vapor)*</i>	\$1.40 each
Incandescent, Flood and Spot Light Lamps	\$0.35 each
LED Lamps	\$2.80 each
Fluorescent light fixtures (without bulbs)	\$9.00 each
Holiday lights <i>(string lights only, no lighted decorations)</i>	No charge
Ballasts (non-PCB)	\$0.55 per lb
Ballasts (PCB, unidentified, or mixed)	\$1.00 per lb
*There will be an additional charge for any broken lamps. **Do not use duct tape to bundle fluorescent lamps together, use an easy-release tape like painter's tape or masking tape.	



## LITHIUM BATTERY DISPOSAL

Lithium batteries are commonly found in many devices today including phones, tablets, laptops, drones, and many high tech toys. They typically carry a high capacity charge needed to meet the energy demands of the devices they power.

Do NOT place these batteries, or and devices that contain them, in your curbside recycling or any recycling center drop off bin.

These batteries can easily start fires when they become damaged by the equipment used to handle recyclables or trash. Damaged batteries can heat up and become an ignition source in large piles of paper, cardboard or plastic bottles.

Lithium batteries have been responsible for many fires in the solid waste and recycling industries, including fires in collection trucks, transfer stations, recycling centers and landfills.

So what should you do? There are places that can collect and recycle unwanted lithium batteries and battery containing devices. In fact, we can accept most rechargeable lithium batteries and devices for a small fee at our main office as part of our electronics recycling service, visit [manitowocountywi.gov/.../electronics-collection/](http://manitowocountywi.gov/.../electronics-collection/) or call the Manitowoc County Recycling Center at 683-4333 for details.





**TIRE COLLECTION**

The Manitowoc County Recycling Center tire collection service has started and will run from April through October.

**Fees and Guidelines**

- \$6.75—per car tire or smaller (5 tires or less).
- \$8.75—per standard truck tire (5 tires or less).
- \$430 per ton (21.5 cents per pound) for:
  - Quantities of 6 or more tires
  - Semi tires
  - Tires on rims
- \$530 per ton (26.5 cents per pound) for off road tires including:
  - Agricultural equipment tires
  - Mining equipment tires
  - Mixed loads containing off road tires
- Stop in the Recycling Center Main Office **before** dropping off tires.
- Collection employees reserve the right to judge, based on tire size, and quantity, if a customer is charged on a per tire basis or by tire weight.
- Tire loads should not be contaminated with gravel, mud, brush, plastic, wood or any other non-tire materials. Loads with excessive contamination may be refused or charged a higher rate at the discretion of the Recycling Center.
- Residents and businesses with dump truck load or larger quantities of tires must call the Recycling Center before coming.
- For more information call the Recycling Center at 920-683-4333 or visit [Recycling.manitowoccountymi.gov](http://Recycling.manitowoccountymi.gov).

**Location & Hours:**

3000 Basswood Rd  
Manitowoc

Monday—Friday

7am—4pm

Saturday

8am—Noon

**Tires Accepted:**

Car

Truck

Semi

Tractor

Motorcycle

ATV

Bicycle

**\*Rubber products  
that are not tires are  
not accepted.**

Our Tire Collection service started in 1998 and has collected approximately 4.64 million pounds of waste tires. Waste tires can be reused in a number of beneficial ways. They can be shredded into rubber chips and used as artificial turf or as a groundcover in playgrounds. Tire rubber can be incorporated into asphalt roads, running tracks, and used in other rubber products. Depending on what other materials are in the tires, they may also be used as tire derived fuel at permitted facilities.

**HOME COMPOSTER**

Gardeners and homeowners, turn your household food scraps into rich compost for your garden or plants. Mix kitchen scraps and grass clipping with leaves and turn the pile occasionally until it breaks down. Not only does home composting provide excellent compost, but you can reduce the amount of materials going into your garbage. Large, 13-cubic foot compost bins with locking lids are available at the Recycling Center for only \$60.00 (tax included).



*Stop by the Recycling Center at any time during normal business hours and take a look at our floor model. Educational resources for home composting are available as well.*



## RECYCLING DEPOT

The Manitowoc Recycling Center maintains a residential drop off area at the Recycling Center Main Office located at 3000 Basswood Road. It is open Monday-Friday from 7am to 4pm, and Saturday from 8am to noon. This site is intended for use by all county residents. There is no trash or garbage drop off at this location. Contact a local hauler or the Ridgeview Landfill for disposal of trash. Different municipal drop off sites may be more accessible to you depending on the city, township or village you are from.

### General Drop Site Guidelines

- Place your recyclables in the bunker or receptacle labeled for that material.
- Remove any plastic bags or strings and take them home with you to place in your trash.
- Do not place nonacceptable items in the bunkers or receptacles.
- Do not place materials outside receptacles on the ground.
- Large loads of cardboard, paper or plastic can be placed on appropriate pile on the tipping floor.
- Use caution driving through the drop site and on the tipping floor.



The recycling and compost areas are monitored for illegal dumping, littering, and other issues. Please follow all posted guidelines.

### Paper

Includes newspapers, junk mail, magazines, computer paper, books with metal or plastic binding removed etc.. Paper should be clean and dry. No paper contaminated with food or oil. No paper coated with foil, plastic or heavy glue. No plastic/foil wrapping paper.



### Plastic

Check for a neck. **We only accept #1 and #2 bottles and jars.** Bottles and jars should be empty. No tub shaped containers or bottles that contained oil or pesticide (even if rinsed). No plastic wraps, films, bags, trays, pails, packaging peanuts, Styrofoam, or any other non bottle shaped item. Please do not tie milk jugs together or tie in plastic bags.



### Glass Bottles

Any color glass bottle or jar can be recycled. Put into designated bunker. Remove lids or caps and rinse. No window glass, mirrors, light bulbs, clay, ceramics, drinking glasses or ovenware.



### Cartons

Cartons include shelf stable and refrigerated containers for wine, milk, juice, cream, soy milk, soup, and egg substitutes. Drop off cartons with the plastic bottles. They should be emptied and flattened.



### Cardboard

Should be clean and flattened. No heavily soiled cardboard or cardboard coated with wax, tin, or plastic. Tubes, beverage carriers and pizza boxes with moderate grease/cheese spots are acceptable.



### Cans

Tin, steel, and aluminum cans. Coated cans, foil, and pie tins are ok. Empty and rinse out food residue.



## ELECTRONIC NEWSLETTER REQUEST

Are you interested in receiving current updates recycling programs in Manitowoc County? Join our electronic mailing list to receive our quarterly newsletter. Either call us at 920-683-4333 or email

jonreisenbuechler@manitowoccountywi.gov and request to be added to our email distribution list. The recycling center will not give away or sell your information. You will receive our quarterly newsletter detailing news and information about the recycling center and related events.

## SCRAP METAL DUMPSTER

The Recycling Depot now has a scrap metal dumpster available for your convenience. It is for clean scrap metal only, including steel, iron, copper, sheet/cast aluminum, tin, and mixed metals. Please remove excessive non-metal components.

- NO propane (or other) tanks
- NO electronics or appliances
- NO batteries or lamps
- NO garbage, plastic, wood, or rubber
- NO chemicals, gas, oil, or other hazardous wastes.



The Manitowoc County Recycling Center is operated by Ascend Services Inc. Formerly Holiday House of Manitowoc Inc.



The Manitowoc County Recycling Center is a business unit of the Manitowoc County Department of Public Works.

