

(...continued from page 4)

—If you wade into knee-deep water without disturbing the sediments and you still see your feet, the risk of illness from swallowing or inhaling cyanobacteria in water is low to moderate for adults. Choose locations with the clearest possible water for small children and dogs to swim in, since they are more likely to accidentally ingest lake water.

—If you can't see your feet in knee-deep water, cyanobacteria densities are elevated and there is a high risk of illness from swallowing or inhaling cyanobacteria. Avoid swimming in these conditions, if water is opaque and green or other vivid colors, has a pea soup-like appearance, or if surface scums or foams are present. Keep small children and dogs out of the water!

—Avoid boating, water skiing, or jet skiing through waters that are opaque, pea soup-like green or if surface scums or foams are present, to avoid inhalation of cyanobacteria in water droplets.

—If you can see your feet but the water contains many tiny particles or debris, choose another swimming location with clearer water, especially for children and dogs. Lots of decomposing particles of organic material in lake water can harbor elevated concentrations of bacteria. Bacteria levels can also be high for several days after heavy rains, as organic material that washed into the lake decomposes.

—Shower after swimming in any body of water, and wash dogs off as well.

When in doubt, stay out!

There is additional information about cyanobacteria at the DNR's website and at the Wisconsin Department of Health Services website:
<http://dnr.wi.gov/lakes/bluegreenalgae/>
<https://www.dhs.wisconsin.gov/water/bg-algae/index.htm>

Gina LaLiberte is a Water Resource Management Specialist with the Wisconsin Department of Natural Resources. Gina.LaLiberte@wisconsin.gov

RETURN SERVICE REQUESTED

Ripples
Lake Ripley Management District
N4450 County Rd. A
Cambridge, WI 53523


Presorted Standard
U.S. Postage
PAID
Cambridge, WI
Permit No. 5

Ripples



Vol. 24, No. 2

Summer 2017

LAKE DISTRICT OFFICE
<p>Oakland Town Hall N4450 County Rd. A Cambridge, WI 53523 (608) 423-4537 ripley@oaklandtown.com www.lakeripley.org</p> <div></div>
BOARD OF DIRECTORS
<p>John Molinaro Chair (608) 423-4743</p> <p>Mike Sabella Treasurer (608) 423-4603</p> <p>Georgia Gomez-Ibanez Secretary (608) 423-9898</p> <p>Craig Kempel Commissioner (608) 423-3605</p> <p>Mike Doman Commissioner (708) 698-2245</p> <p>Jimmy DeGidio Town of Oakland Rep. (608) 921-1340</p> <p>Walt Christensen Jefferson County Rep. (920) 723-1320</p>
LAKE MANAGER
<p>Lisa Griffin (608) 423-4537</p>
WEED HARVEST CREW
<p>Dick Langer Ed Grunden Bruce Crump Roger Rude Robert Henkel Richard Trailer</p>

FROM THE HELM



I knew two years ago this would be my last term on the Board of the Lake Ripley Management District. Including the nearly three years volunteering to organize the District and the twenty-seven years serving on the Board I have been intimately involved for Thirty years. I can honestly say I have enjoyed almost every-day of the thirty years. It has afforded me the opportunity to meet and become friends with many DNR, UW-Extension, and statewide advocates for clean healthy lakes. Unfortunately many of those friends have retired or passed on.

I have been given the opportunity to participate in the statewide Lake Leaders Program, the Advanced Lake Leaders Program, the Wisconsin Lakes Convention, and on the Board of the Wisconsin Association of Lakes. I've gone from participant, to organizer, to presenter, to moderator, and to Chairman of the Board. I have met and been friends with many of the movers and shakers of the Wisconsin Environmental Movement, including Governors, Senators, and Directors of the DNR. I have been asked to sit on committees to help establish statewide rules for Wisconsin lakes. As I have said before, I was introduced to the writings of Aldo Leopold, which has changed and formed my perspective of the natural world around me.

It has been a pleasure to serve with some of the most devoted Management District board members, as well as, the most talented Lake Managers and volunteers. I leave the Board in their good and capable hands. I would be remiss if I didn't thank my wife Ann, who has been at my side all this time. We traveled all over the great State of Wisconsin and she supported and consoled me when things didn't go exactly as planned.

I leave the Lake District at a very challenging time. The Wisconsin Legislature has removed and diluted many of the protections for Lake Ripley and all the other lakes in the state. The DNR has been decimated with personnel cuts and laws that don't allow them to do their jobs. Now, to be honest, when the DNR carried the "big stick" in the state, they weren't afraid to use it. When you enforce rules you make enemies. So the pendulum has swung in the other direction and our lakes will pay the price.

(continued on page 2...)

(...continued from page 1)

The Lake District becomes the last vestige of lake protection. It may be necessary to seek remedies in court, as we have done in the past to protect the lake. But, in reality, you, the residents of the Lake District, have to consciously choose to do the right thing. Sometimes the right thing may not be in your best interest, but in the best interest of the lake. Never forget the accumulative effect that many individual decisions make on the total health of the lake. If that is not reason enough, property values in the entire Lake District rest on a healthy lake.

Ann and I are not leaving the area, and I have told the Board and Lisa, our lake manager, that I will be available to volunteer and advise when needed. Thank you all for your support of me, and the Lake Ripley Management District.

John Molinaro, Chair

DNR Wetland Purchase Updates

The District continues to work with the DNR and partners on the purchase of 40 acres of wetlands that adjoin the Lake District Preserve.

As a part of this process we continue to assess this area through the seasons for a comprehensive review of this wetland. This information is valuable in defining the goals for the area and determining cost effective strategies that help to accomplish those goals. Management of this area will be added to our existing management plan for the Lake District Preserve.

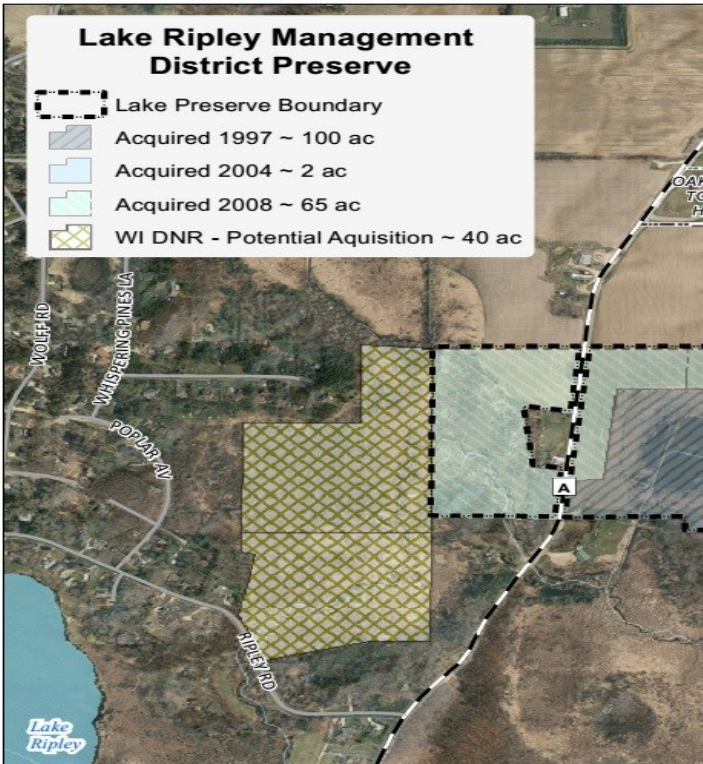
This spring has had many large rain events. Our monitoring shows that water flowing through the culverts on Ripley Road downstream from this wetland show better water clarity and quality than what is found at our monitoring site on Hwy A upstream of the wetland.

We will close on the land purchase before October 31st. We are currently working with Ducks Unlimited to secure additional grant funding.

The generous support of our partners and community has again surpassed expectations, and this purchase should be fully funded by donations and grant awards. We want to thank the following businesses and organizations that have contributed to this purchase:

The Cambridge Foundation, Pheasants Forever Inc. Jefferson County Chapter #200, Oakland Conservation Club, Fort Atkinson Wisconsin Conservation Club, United Community Bank, Badger Bank, DeGidio Tooling LLC and Kutz's Hillside Rental.

We're also very grateful for the generous donations from local residents who support this effort. After closing on the purchase, we will host an event highlighting this new addition to the Lake District Preserve. Stay tuned for dates and times for the event.



Clean Boats Clean Waters

Hello, my name is Anna Bartsch, and I am helping the Clean Boats Clean Waters effort this season as a watercraft inspector. Along with Lake Ripley, I also work on the launches at Rock Lake. I started working at the beginning of July because the first half of the summer I was participating in intensive field experiences designed by my college, the University of Wisconsin – Stevens Point, to familiarize me with the many facets of natural resource management.

At Stevens Point, I am working toward a water resources major and soil sciences minor. I appreciate the Lake Ripley Management District for giving me the ability to talk with boaters and to spread the goal of invasive species management. This is a fantastic opportunity to work toward my goal of engaging the public in efforts to conserve our water resources. This paid position is funded in part by a grant from the WDNR which the District has received for the past 4 years.



In addition to what I have learned while working on the launches, I was graciously allowed to participate in an invasive plant survey on Rock Lake and the upcoming boat count on Lake Ripley, giving me rich experience and knowledge that will aid me on my career path in water management.

My goal for the upcoming school year is to continue balancing work, school, and sports. When I go back to school this semester, I will be starting the second semester of my junior year. I am looking forward to many classes focusing on water and soils.

(...continued from page 6)

John's passion for natural resource preservation and protection will have a lasting legacy for Lake Ripley. His leadership has led to numerous studies conducted that provide valuable information on Lake Ripley's history, watershed characteristics, past and current threats and provided the tools to keep monitoring for changes. Policy and programs have been established that promote cost-effective management and empower landowners to make improvements on their properties that continue to support a healthy lake.

Our lake and community has benefited and will continue to benefit from the dedication and time John has contributed. His perseverance for lake protections are second to none. He continues to work within the community through various groups and partnerships.

Please join us for a reception at the Lake Ripley Country Club to wish John a happy retirement from the District Board. Dates and times for the event are yet to be determined but will be posted on our website and relayed at the annual meeting. We hope you can join us in celebrating his time with the Lake District and wishing him well on his next adventure.



A big smile on a beautiful lake. And yes, it was catch and release!

(...continued from page 3)

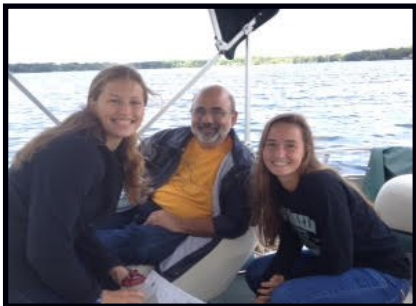
When the priority lake project ended in 2007, the Board sought to continue this type of program by establishing the Lake District Cost-Sharing program. John serves on the sub-committee that reviews projects to determine if they meet the established criteria for program goals and financial support.



John receiving the Wisconsin Lakes Stewardship award.

Since the inception of the Board, several management plans were developed that encompassed aquatic plant harvesting, the goals and management of the Lake District Preserve, and most recently the Lake Ripley Improvement Plan that combines the prior work into a comprehensive guide moving forward.

Along with fellow Board Members, John has been active in recruiting youth to become involved in stewardship of our natural resources. He participated in youth-focused events that provide hands-on learning opportunities, such as the pontoon classroom.



Pontoon Classroom Captain Molinaro

John was active in modifying state statutes that govern Lake District rules. Partnering with others, legislation was passed that allowed Districts' the ability to budget and set aside funds for future needs.

In partnership with the Town of Oakland, numerous ordinances have been passed to further protect the lake, such as slow-no-wake rules in shallow and ecologically significant areas to provide safe recreational opportunities.

John has been a leader at the County level fostering natural resource preservation. In 1998 he initiated the creation of the Jefferson County Land Trust. In 2003 he served as a member of the Jefferson County Lakes Enhancement Advisory committee. John served as a County Board Supervisor for District 16 from 2004-2014. As a member of the County Board he also served on the County's Finance and Parks Committees. He led efforts to clarify and strengthen county shoreland zoning ordinances. He also served as part of the Historic Preservation Commission.

Statewide, John was a regular participant, moderator and speaker at the Wisconsin Lakes Conference and served on the organizing committee from 2003-2005. He is a graduate of the Wisconsin Lake Leader Institute-Crew 2. John served as a Southeast regional Workshop organizing committee from 2003-2005. John also served on the Wisconsin Association of Lakes Board of Directors.



Lake District Board members and staff stand outside the Aldo Leopold shack as graduates of the Lake Leaders Institute.

(continued on page 7...)

Honoring a Lake Steward

The upcoming Annual Meeting marks an end to John's time with the Lake District Board. As announced in John's *From the Helm* article, John is stepping down from his position after serving for 27 years. His passion, enthusiasm and commitment for lakes has been a benefit to Lake Ripley and lakes statewide.

John's contributions to the Lake Ripley area are vast and far reaching. He was president of Shore Place Homeowner's Association from 1979-2012. He started the Lake Ripley harvesting program in 1989 when invasive Eurasian water milfoil was estimated to cover over 40% of the lake. Driving up from Chicago to work the harvester, he volunteered his time to try to make the lake better, one load at a time.

Adopting Aldo Leopold's ideals of land ethic, he established a watershed approach to address the conditions Lake Ripley was facing. John spearheaded efforts to establish the Lake Ripley Management District, which was formed on December 11, 1990 by a vote of the Jefferson County Board. John served as Secretary from 1991-1992 and became Chairman in 1993 and has been Chairman for 24 years.

As Chairman, John has been involved with several initiatives at the local, county and state levels. Lake Ripley was awarded "priority lake" status by the DNR and was declared an outstanding natural resource needing protection and long-term management. As a result, over \$1 million dollars in grants were received, with sediment-load reductions of 2,100/tons/year achieved through this program.

In 1995, the Lake District received an Outstanding Lake Stewardship award from the DNR, UW-Extension, and Wisconsin Association of Lakes.

In 1997, the original 99-acre Lake District Preserve was established to protect the lake's only inlet stream by restoring wetland function adjacent to the stream which then protects the health and condition of Lake Ripley. Trails through re-

stored prairie provide low-impact public access and educational opportunities that promote community awareness of watershed-conservation issues. The addition of 2 acres in 2004, and 66 acres in 2008 bring the Preserve to 167 acres. Additional wetlands purchased later this year will bring the Preserve to 207 acres and will further protect the inlet stream.



New sign at the Lake District Preserve

In 1998 the innovative "Lake Watch" program was initiated to reduce the number of boating violations and user conflicts in order to create a safe and enjoyable lake environment.



1998 Lake District Board of Directors and staff

In 2003, John co-authored a research paper titled Lake Ripley Watercraft Census & Recreational Carrying Capacity Analysis. He is also co-author for a North American Lake Manager Society (NALMS) publication titled Assessing a Lake's Carrying Capacity (2004).

In 2006, John received the Wisconsin Lake Stewardship Award from the DNR, UW Extension, and Wisconsin Association of Lakes. This award is presented to individuals who have made outstanding contributions of time and effort toward the preservation and protection of Wisconsin's lake ecosystems and the communities surrounding them.

(continued on page 6...)

Cyanobacteria: How to Protect Yourself

By: Gina LaLiberte (WDNR)

During hot summer months, cyanobacteria, which are also known as blue-green algae, commonly grow to high densities that appear as discolored water or scums. Cyanobacteria are true bacteria, but they are often called “algae” because they are photosynthetic.

In low densities, cyanobacteria look like tiny green particles in lake water. They should not be confused with filamentous green algae that may be abundant in lakes. Filamentous green algae look like long green hair in water, or fluffy green fuzz growing attached to rocks or other surfaces.

Cyanobacteria live in every lake but are not a problem unless their populations grow to high densities, known as blooms, or if wind or currents concentrate cyanobacteria from throughout the lake into one location. On large lakes, a bloom in one location does not mean that the entire lake is impaired by cyanobacteria. Blooms can change rapidly, so a bloom on one date does not mean that blooms will persist throughout the summer.

Cyanobacteria are a concern to us because some species may produce toxins that cause illness if ingested or inhaled. Swallowing cyanobacteria in water can result in nausea, vomiting, diarrhea, and abdominal pain. Inhaling cyanobacteria in water droplets can result in symptoms similar to colds, influenza, or asthma.

Some people experience skin irritation, rashes, or hives if their skin is in contact with cyanobacteria, particularly where cells are trapped under clothing. People with allergies or compromised immune systems may be more susceptible to these symptoms.

Dogs willingly drink lake water and can lick large amounts of cyanobacteria from their fur, so they may have more severe symptoms including excess salivation, weakness, breathing difficulty, and convulsions. If your dog exhibits these symptoms, seek veterinary care immediately. Always offer clean water sources for dogs to drink.

**Budget Hearing
August 19, 2017
9 a.m. at Oakland Town Hall**

Annual Meeting
Immediately following budget hearing

- I. Call to Order
- II. Approval of 2016 Annual Meeting Minutes
- III. Nomination of Board Candidates-
Two open positions
(Names on Ballot: Mark Heynis, Keith Kolb,
Craig Kempel-incumbent)
- IV. Chairman's report
- V. Treasurer's report
- VI. Discussion and possible action on other
Business that can be legally considered by
the District
- VII. Approval of budget and tax levy
- VIII. Tabulation of vote and election of board
members
- IX. Adjournment

**Meeting of the Board of Directors
August 19, 2017
Immediately following Budget Hearing/Annual
Meeting**

- I. Call to Order and Roll Call
- II. Election of Board Officers
- III. Adjournment

One of the useful things about cyanobacteria is that unlike other bacteria such as *E. coli*, you can see when cyanobacteria are overabundant. Colorful floating scums, foams, or opaque, pea-soup-like water signal high numbers of cyanobacteria. Some common sense measures can help you to assess conditions for yourself and keep you safe from cyanobacteria during water recreation:

—It's always a good idea to avoid swallowing any untreated surface water because it can contain cyanobacteria, bacteria, viruses, or parasites that can make people and animals sick.

(continued on page 8...)

Official Notices

**LAKE RIPLEY MANAGEMENT DISTRICT
2018 PROPOSED BUDGET**

	2016 ACTUAL	2017 BUDGET	2017 JAN-JUNE ACTUAL	2017 JAN-DEC ESTIMATED	2018 BUDGET
Revenues:					
Real Estate Tax Levy	\$ 117,665	\$ 120,055	\$ 84,161	\$ 120,055	\$ 122,916
Grants	4,818		506	506	
Interest Income	582		312	624	
Carryover	27,820	23,597	23,597	23,597	18,768
Restricted Funds, Net	<32,750>		<17,751>	<4,429>	
Authorized use of Unrestricted Funds				7,700	10,000
Other	87		627	627	
Total Revenues	<u>118,222</u>	<u>143,652</u>	<u>91,452</u>	<u>148,680</u>	<u>151,684</u>
Projects:					
Various	279	1,500	416	1,000	1,000
Operations:					
Landowner Cost Sharing	9,228	20,000	0	4,500	20,000
Weed Harvesting	11,380	10,900	746	9,982	10,450
Preserve Restoration/Management	12,962	12,175	10,180	12,175	15,250
Staff Payroll/ Fringes/Taxes	51,737	53,122	26,561	53,122	54,669
Insurance	6,614	7,900	7,174	7,174	8,100
Legal Counsel	1,436	2,500	6,129	7,129	5,000
Dues & Conferences	1,986	2,855	926	1,730	2,865
Office & Community Outreach	7,327	7,500	2,772	7,900	8,650
Commissioner Stipends	4,600	4,400	2,100	4,400	4,900
Rent	1,800	1,800	1,050	1,800	1,800
Capital Reserve, Land/Equip Acquisition	10,000	15,000	0	15,000	15,000
Miscellaneous	<u>2,101</u>	<u>4,000</u>	<u>708</u>	<u>4,000</u>	<u>4,000</u>
Total Disbursements	<u>121,450</u>	<u>143,652</u>	<u>58,762</u>	<u>129,912</u>	<u>151,684</u>
Balance	\$ <3,228>	\$ 0	\$ 32,690	\$ 18,768	\$ 0

THE LRMD HAS NO INDEBTEDNESS

	LAKE RIPLEY PROTECTION FUND
Restricted Funds:	
Estimated Balance (12/31/16)	\$ 15,101
Additional 2016 Activity	
Increase	15,870
Decrease	<5,313>
Final Balance (12/31/16)	25,658
2017 Estimated Activity	
Interest Earned	115
Increase	9,795
Decrease	<9,002>
Estimated Balance (12/31/17)	\$ 26,566

Please find the agenda for the Budget Hearing/Annual Meeting and Board Meeting on Page 4.