

## Prime Farmland - Slope Delineation

### Legend

#### Prime Farmland

- Prime farmland
- Prime if drained
- Prime if drained and not flooded
- Prime if not flooded
- Not prime farmland

#### Slope

- Slopes > 12%
- Slopes > 20%

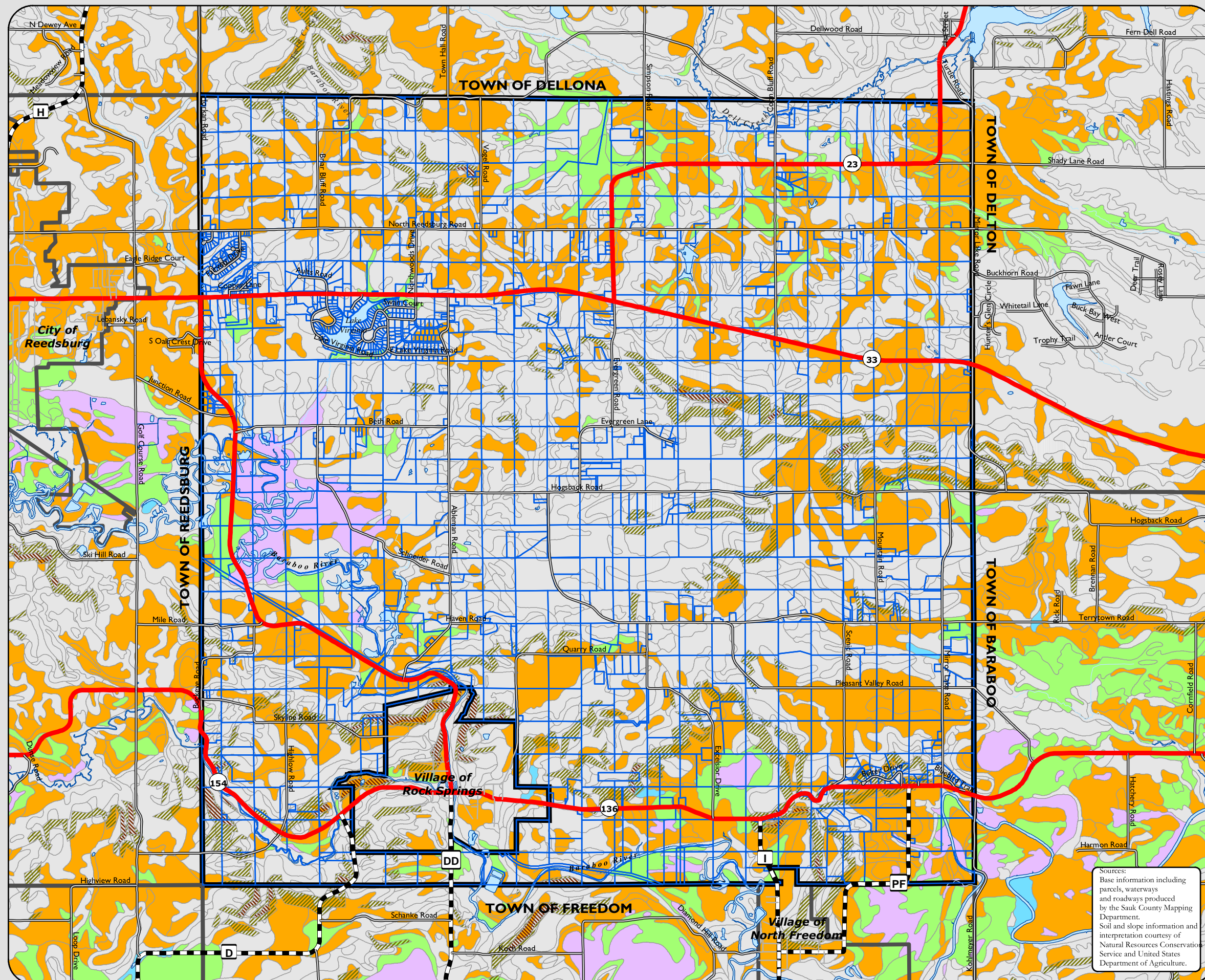
#### Boundaries

- Parcel Boundary
- Town of Excelsior
- Town Boundary
- River/Stream

#### Transportation

- State Highway
- County Highway
- Town Road
- Municipal Street
- Recreation Trail

Generally, land capabilities 1-3 are considered prime farmland. However, with each land classification certain soils have limitations such as- slope, erosion, flooding, or drought. So a soil class of 1-3, which generally would be considered prime farmland may not be officially labeled as prime farmland, because it has one of the limitations listed above.



Sources:  
Base information including parcels, waterways and roadways produced by the Sauk County Mapping Department.  
Soil and slope information and interpretation courtesy of Natural Resources Conservation Service and United States Department of Agriculture.

