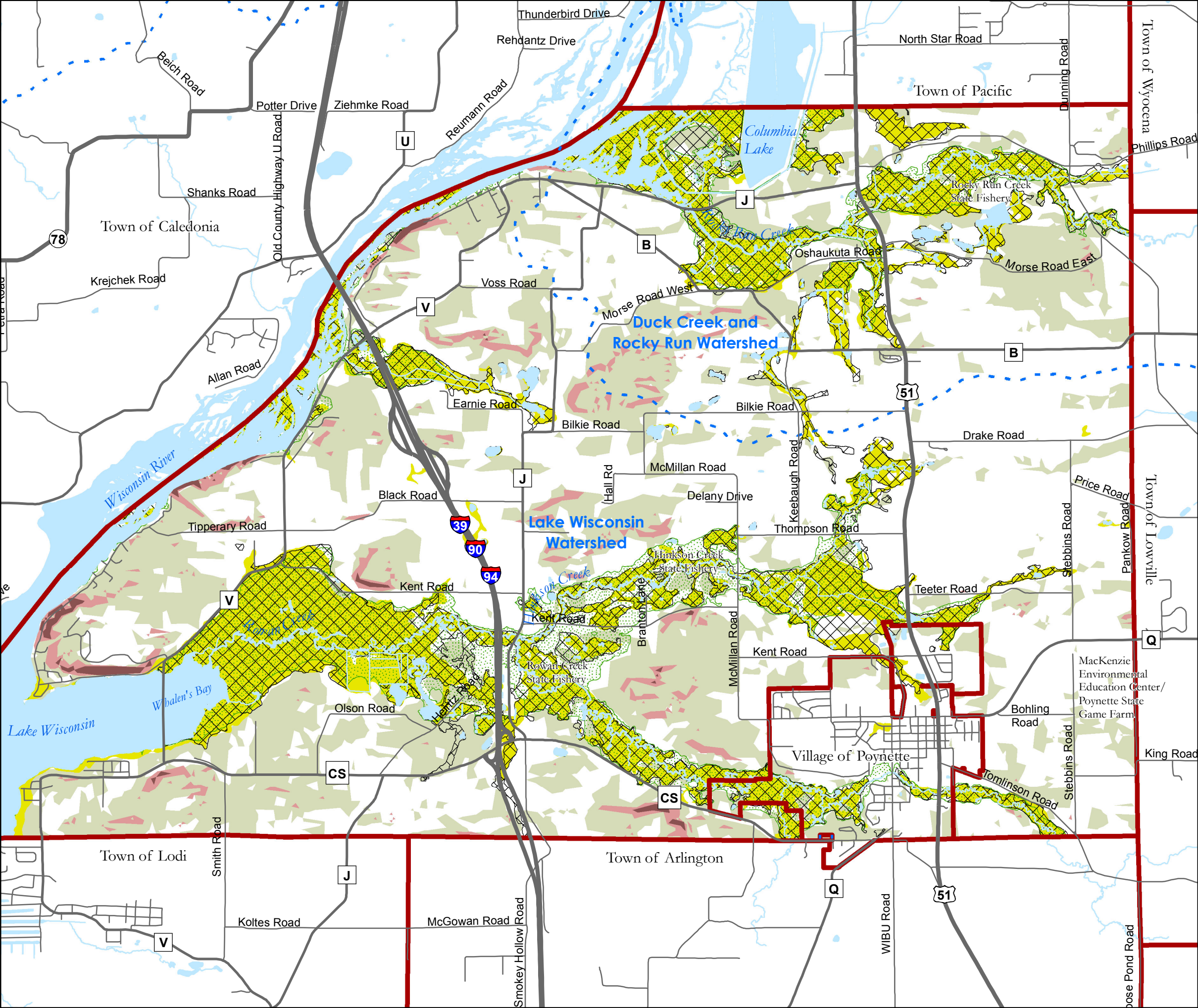


Dekorra Comprehensive Plan

Map 4: Natural Areas



- Municipal Boundaries
- Highways
- Local Roads
- Watershed Boundaries
- Surface Water
- Slopes 12% to 20%¹
- Slopes > 20%¹
- Hydric Soils²
- FEMA Floodplains³
- DNR Wetlands⁴
- Forested Areas not with other Characteristics⁵

1. Slopes extracted from USGS 7.5' digital elevation models.

2. A hydric soil is a soil formed under conditions of saturation, flooding, or ponding long enough during the growing season to develop anaerobic conditions in the upper part. They are generally not advised for building construction.

3. Floodplains are 100 year floodplains extracted from Columbia County's FEMA DFIRM Dataset and modified to reflect LOMA Case # 11-05-1516A.

4. Wetlands extracted from WDNR's Wisconsin Wetlands Inventory, which includes mapped wetlands at least 2 acres in size derived mainly from air photo interpretation. All wetlands subject to state or federal regulations.

5. Forested areas extracted from WDNR's landcover dataset. Landcover data set is a raster representation of vegetation/land cover for the State. Other lands shown as steep slopes or hydric soils may also be forested even though this map does not represent them as forested.

Updated: December 11, 2012

Sources: Columbia County LIQ, FEMA, NRCS, General Engineering, & Wisconsin DNR.

