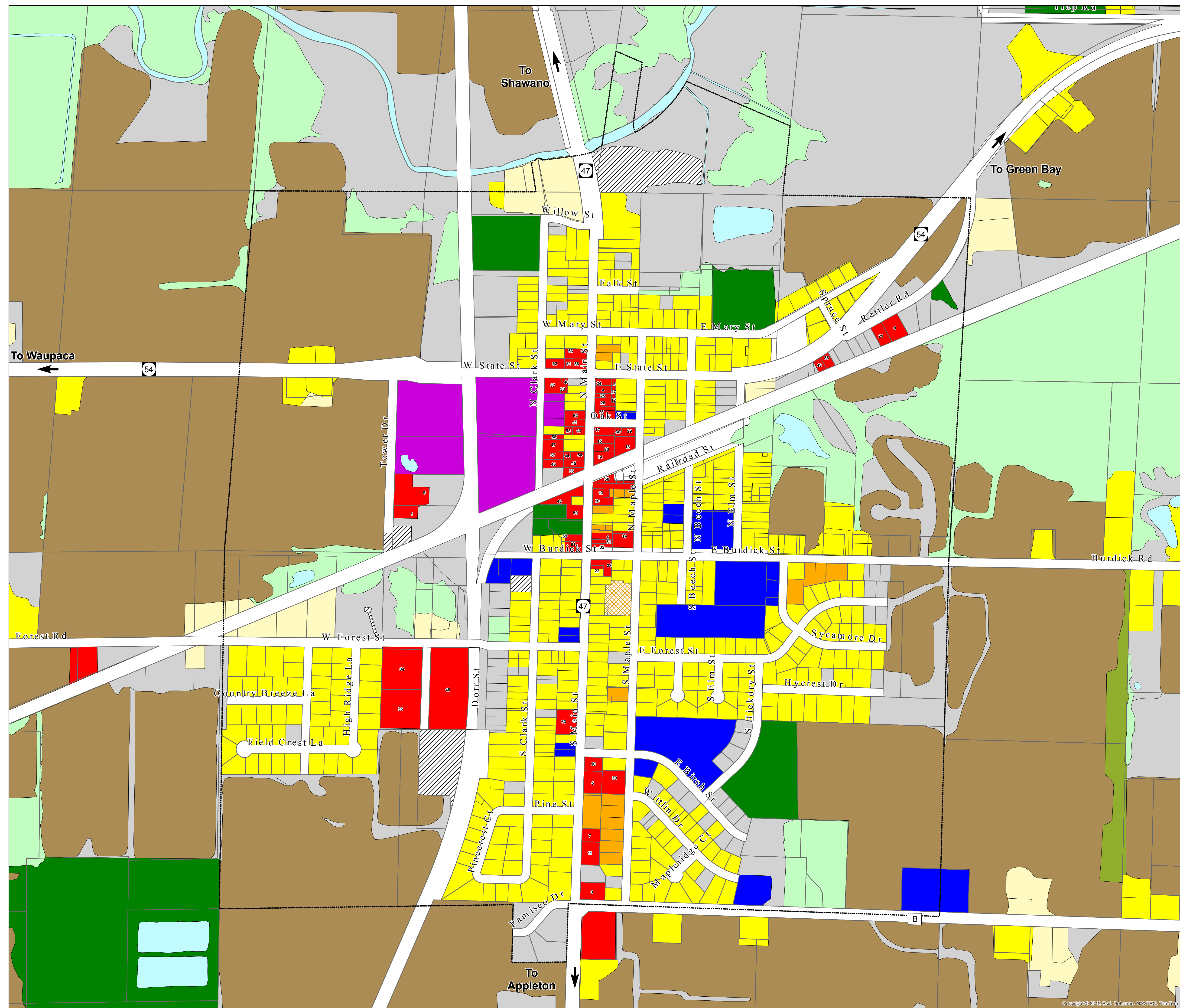
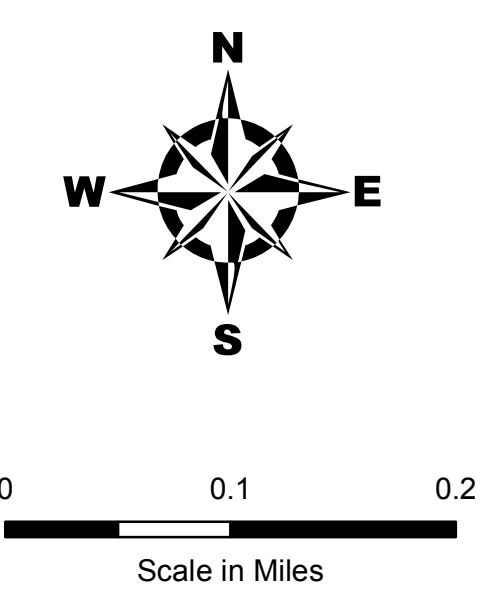


Village of Black Creek Land Use / Parcels



- businessparcels
- Village Boundary
- Parcels
- Single Family Residential
- Farmsteads
- Multi-Family
- Mobile Home Parks
- Commercial
- Industrial
- Quarries
- Institutional Facilities
- Transportation
- Utilities/Communications
- Non-Irrigated Cropland
- Irrigated Cropland
- Other Ag Land / Pasture
- Water Features
- Recreational Facilities
- Planted Woodlands
- General Woodlands
- Open Other Land

Source: Land Use - ECWRPC, April 2013.
Parcels - Outagamie County 2013



This data was created for use by the East Central Wisconsin Regional Planning Commission Geographic Information System. Any other use/application of this information is the responsibility of the user and such use/application is at their own risk. East Central Wisconsin Regional Planning Commission disclaims all liability regarding fitness of the information for any use other than for East Central Wisconsin Regional Planning Commission business.

Prepared By
EAST CENTRAL WISCONSIN
REGIONAL PLANNING COMMISSION- APRIL 2013

