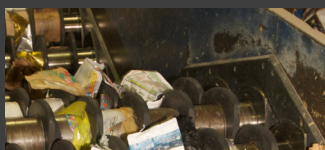
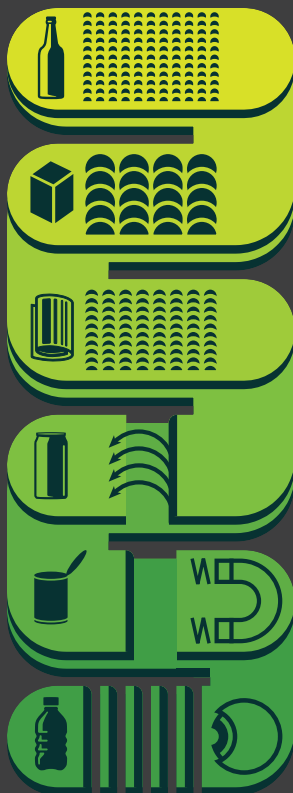




HOW THE ZERO-SORT MACHINE WORKS

1. Material enters the first screen that breaks and removes **glass** bottles and jars.
2. Rotating discs push **cardboard** over the top while smaller material falls below.
3. Smaller disc screens separate **paper**.
4. An eddy current creates a reverse magnetic field that repels **aluminum** cans.
5. A magnet picks out **tin** cans.
6. Optical sorting technology sorts **plastics** into their different types.



SEE THE PROCESS: ZEROSORT.COM

GIVING RESOURCES NEW LIFE

Zero-Sort is the single bin recycling service that puts more of your stuff back into the world and less of it into the landfill.

It never leaves our sight

Our state-of-the-art sorting facilities are located throughout the Northeast. From pickup to final processing, we make sure your recyclables take the shortest possible route from the bin to the shelves.

It's just one bin

No sorting on your end makes it easier to recycle more stuff more often. You just focus on filling the bin – we take care of the rest.

It's what we do

To us, green is much more than an empty promise or marketing tactic. It's our livelihood. And it's why we gear everything we do toward real, measurable results.

To see how Zero-Sort makes the most of your recycling efforts, visit us at zerosort.com



IT'S A SINGLE BIN

THAT MAKES OUR BRIDGES, BICYCLES, CARPETS AND CLOTHING.

And it runs on your recyclables.

To see how Zero-Sort makes the most of your recycling efforts, visit us at zerosort.com



ZERO-SORT™
HOW RECYCLING GETS DONE
a casella service

ZERO-SORT: HOW RECYCLING GETS DONE

GLASS BOTTLES & JARS



- ✓ **Rinse clean.** Food and beverage containers only.
- ⊗ **No** light bulbs, Pyrex, drinking glasses, window panes, or ceramics.

METAL AEROSOL CANS (EMPTY)



- ✓ **Separate cap from container.** Do not puncture cans.
- ⊗ **No** full or partially full containers. Deliver paint, cleansers, automotive sprays, and other hazardous fluids to local hazardous waste disposal site.

ALUMINUM CANS, FOIL, AND PIE PLATES



- ✓ **Rinse clean.**
- ⊗ **No** aluminum with stuck-on food or grease

METAL CANS



- ✓ **Rinse clean.** Food and beverage cans only. Labels are OK. Can lids are OK placed inside the cans.
- ⊗ **No** oil filters or scrap metal.

BOXBOARD



Cereal, shoe, and dry-food boxes, soda carries, paper egg cartons, tissue boxes, paper towel and toilet paper cores

- ✓ **Empty.** Remove and discard plastic liners.
- ⊗ **No** styrofoam cups. No stuck-on food or grease.

CORRUGATED CARDBOARD



Boxes with a wavy center layer.

- ✓ **Empty.** Staples, tape, and labels are OK.
- ⊗ **No** oil, paint, or chemical stained, wet unclean, or wax-coated cardboard. No strapping or string. No plastic, filmy, or foam packing materials.

ENVELOPES & OPENED MAIL



White, colored, gummed, and window envelopes.

- ✓ **Remove non-paper enclosers.** (e.g., CDs, plastic cards, etc.) and strings. Labels are OK.
- ⊗ **No** Tyvek or plastic envelopes. No bubble wrap padded mailers..

MAGAZINES & SOFT-COVER BOOKS



Glue or staple-bound publications, paperback books, phone books, catalogs, etc.

- ✓ **Must be clean and dry.** Phone books are OK year-round.
- ⊗ **No** plastic wrapping, CDs or plastic covers.

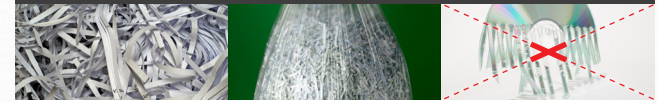
NEWSPAPER



All sections and inserts

- ✓ **Must be clean and dry.** Remove from plastic bags. Do not tie with string.
- ⊗ **None** That are contaminated with food, paint, oil, pet waste, etc. No plastic bags.

SHREDDED PAPER



Confidential Documents.

- ✓ **Place in clear plastic bags and tie bag shut.**
- ⊗ **No** shredded plastic (credit cards, etc.)

WHITE & COLORED PAPER



Printed, letterhead, copier paper, glossy flyers & brochures, file folders, craft paper, manilla folders, index cards, construction paper, non-metallic wrapping paper, tissue paper & cards.

- ✓ **Must be clean and dry.** No need to remove plastic tabs, paper clips & metal hanging-file strips. Staples are also OK
- ⊗ **No** pressure-sensitive duplication forms. No foil paper. No paper towels or facial tissue, No stickers or sticker backing material.

PLASTICS 1-7 & RIGID PLASTICS



Containers, bottles & jugs for foods, beverages, beauty, and cleaning products, detergents, dairy tubs (yogurt, sour cream, etc.) 5 gallon pails, laundry baskets, sleds, take-out containers, flower pots and trays, and frozen-food trays. Minimum size: 2" on any 2 sides.

- ✓ **Rinse clean.**
- ⊗ **No** filmy or pliable plastic (grocery bags, bubble wrap, etc.). No foam polystyrene (Styrofoam) products such as cups, take-out containers, packaging blocks and peanuts, etc. No housewares, office products, etc. No motor oil containers or electronics housing. No biodegradable plastics (PLA). fiber