

Village of Theresa Newsletter

April 2012

Community Kids Clothing Fundraiser

Sponsored by 'Friends of the Library'

Fundraiser will be held on Saturday June 2nd

9:00am – 5:00pm

Location: 503 Sycamore Place

Cost of items:

.50 Per item - \$2 each for shoes and jackets

100% of proceeds donated to children's section of the Theresa Library. \$310 was raised last year. **Let's Beat IT!** Gently worn clothing donations, size birth to teen may be dropped off at 503 Sycamore Place and at the Theresa Village Hall (202 S. Milwaukee Street) during normal business hours only!
PLEASE DO NOT LEAVE ITEMS OUTSIDE THE DOOR OF THE VILLAGE HALL!
Adult and child volunteers welcome.
For more information contact RaChelle at (920) 488-2680.



Annual Pioneer Day 5K Run/Walk/Roll

Sponsored by American Legion Post 270

Sunday September 9, 2012 - 9:00 am Kid's run to follow

This event will begin and end at Theresa Fireman's Park (Hwy 28 West).

Entry Fees:

\$25 – pre registration - adult runners/walkers age 15 & older

\$20 – pre-registration - children runners/walkers age 14 and younger

\$30 –registration fee on day of event

Pre-register by August 24th

Entrance fee guarantees you a t-shirt and meal ticket for a pork or chicken dinner at Fireman's Park after the event.

There's no age limit - No rollerblades or skateboards allowed
baby strollers are welcome.

Complimentary snacks and beverages will be available following the race.

For more information contact Abby Lubbert at

(414)737-3211 or abbylub@yahoo.com.

Village Historical Society

The newly restored Solomon Juneau Home, John Schiefer and Peter Reklau Homes will be open for tours on Memorial Day and the last Sunday of June, July, August and September from 1:00pm-4:30pm. On August 26th the Annual Ice Cream Social will be held with homemade desserts, ice cream and beverages. Group tours are given by appointment by calling 920/488/4784 or 920/488/5552. Theresa Historical Park is located in the 200 block of S. Milwaukee Street (Hwy 175). The Society also sponsors, in part, the Community Band Concert held on June 20th on Rock River Street; music by River City Blaskapelle. Food and refreshments will be available starting at 5:30pm. Rain Date is June 27th.

2012 CALENDAR OF EVENTS

All You Can Eat Pancake Breakfast

(with all the trimmings)

Sunday May 6th

8:00AM -12:30PM

Location: Theresa Public School

Sponsored by Theresa American Legion

Annual Village Wide Rummage Sale

& Brat/Burger Fry

Saturday June 2nd

Location of Brat Fry: Village Garage 201 S. Milwaukee St.

& American Legion Clubhouse 101 Church Street

Sponsored by Theresa American Legion Post 270

Community Band Concert

Music By: River City Blaskapelle

Wednesday June 20th

7:00pm

Location: W. Rock River Street, Theresa

Sponsored by Theresa American Legion, Theresa Community

Development Corporation & Theresa Historical Society

Rain Date: Wednesday June 27th

Annual Theresa Fireman's Picnic & Parade

June 22nd, 23rd, & 24th

Location: Theresa Fireman's Park, Hwy 28 West

Sunday June 26th: Parade at 11:00am – Downtown Theresa

Sponsored by Theresa Fire Department

Theresa Lions Club Annual Tractor Pull

Sunday August 26th

10:00am – 6:00pm

Location: Theresa Fireman's Park, Hwy 28 West

Sponsored by Theresa Lions Club

Theresa Historical Society Ice Cream Social

Sunday August 26th

1:00pm – 4:30pm

Entertainment to be announced at a later date

Location: Solomon Juneau House, S. Milwaukee St. (Hwy 175)

Note: The Historical Museum/Solomon Juneau House is open the last

Sunday of every month from Memorial Day thru September.

Hours: 1:00pm – 4:30pm

Theresa American Legion & Auxiliary Pioneer Day

Sunday September 9th

11:00am – 4:00pm

Pork/Chicken on the spit, cake & ice cream, flea market & 5K run/walk

Band concert by the Lomira High School Band

Location: Theresa Fireman's Park, Hwy 28 West

Meet Your Village Board Members

Village President

George Marsh

Village Trustees

David Brandenburg

J.R. Koenigs

Gene Koll

Jason Marsh

Dick Palecek

Jody Steger

MESSAGE FROM VILLAGE PRESIDENT GEORGE MARSH

As I think you may be aware from news articles, TV, etc. the Village will be facing funding challenges in the coming year or years along with all other municipalities. Your board will be trying its best to meet these challenges as they continue to surface. The board continues to work on a sanitary sewer inflow/infiltration ordinance for private sewer laterals; although this work sometimes moves slowly, we keep moving forward on the issue, and it appears that we are extremely close to having this completed in the very near future.

\$\$ A BANG FOR YOUR BUCK \$\$ by GENE KOLL, VILLAGE TRUSTEE

Questions have come up over my three years on the Village Board about; "What do we get from the Village for our tax dollars?" Services provided by the Village of Theresa are divided into four main categories: General Government and Administration, Public Safety, Public Works and Culture, Recreation and Education.

General Government and Administration would include buildings, equipment and staff needed for Village Administrative Services. Insurance for Village properties, buildings, staff and equipment. Assessor services, data processing, building inspection services, audit services, elections and election inspectors. **Public Safety**: Police services, Emergency Government System and three warning sirens. 24/365 Fire Department and EMS Ambulance Service (cost shared 50/50 with the Township of Theresa). **Public Works**: Buildings, equipment and staff needed to provide Village Public Works Services, maintenance and repair of all Village buildings and grounds, Village streets, five parks, the storm sewer system and snow plowing and shoveling of streets and sidewalks. **Culture, Recreation and Education**: Theresa Public Library (cost shared 50/50 with the Township of Theresa) and the Christmas Holiday Decorations. The list of services is not all inclusive. Your input is always appreciated at Village Board Meetings. Meetings are held the first Monday of every month at 7:00 PM.

Snow Removal

The owner, occupant, or person in charge of every building, lot or part of a lot within the Village, shall remove all snow and ice from said sidewalk within 24 hours from the time the snow has ceased to fall. If the snow/ice is not removed, the Village may clear the snow/ice from the sidewalk **"without"** written notice and return the cost to the property owner (\$100 per hour/\$100 minimum). Please keep the safety of your family and neighbors in mind by removing snow/ice from any **fire hydrant** near your property. The Theresa Fire Department would like to thank you in advance for your cooperation. If you use a **cluster mailbox** or have a cluster mailbox located on or near your property, please take the time to remove the ice/snow from around the box and keep the **sidewalk leading to the cluster mailbox** clear.



Help Keep Your Community Clean

It shall be unlawful for any person to deposit or cause to be deposited, dump, sort, scatter or leave any rubbish, stone, wire, earth, ashes, cinders, sawdust, hay, glass, manure, filth, paper, **snow**, ice, dirt, **grass**, **leaves**, construction waste, garbage or other offensive or noxious material in any **PUBLIC STREET**, sidewalk, or alley or upon any public property or upon any property of another, without the express permission of the owner or occupant thereof. Any person who violates the above-mentioned ordinance may be subject to forfeiture.

THERESA PUBLIC LIBRARY

VISIT OUR PARKS

Theresa Fireman's Park

Looking for the perfect place to host a family reunion, graduation party, or other get-together? The Theresa Fireman's Park is available for renting. The park provides a large pavilion with picnic tables, kitchen area and restrooms, along with a picturesque setting with plenty of space for the kids! For reservations and pricing please call Jason Stein at (414) 510-7354.

River's Edge Park

River's Edge Park offers a boat landing, volleyball courts, basketball court, shelters and restrooms. There is NO ELECTRICITY at the park. The shelters at River's Edge Park may be reserved at NO charge. Reservation forms are available at the Village Hall.

Highlander Park

Highlander Park is a great place to take in a beautiful view of the marsh.

Willow Park

Willow Park is a great place to spend an afternoon with the kids while they enjoy the

The Theresa Public Library Summer Reading Program begins June 11th and runs through August 3rd. You can sign up for the reading program at the Theresa Public Library (290 Mayville Street) during the week of June 11th. The theme is "Dream Big...READ!" Visit their website www.theresa.lib.wi.us for more details. Summer special events include:

Magician David Landau

Sponsored by:

Mid Wisconsin Federated Library System

June 28th at 3:30pm

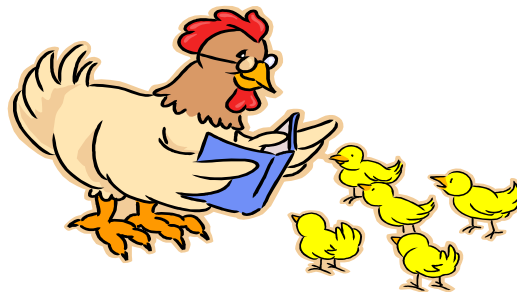
Ice Cream Social

Sponsored by: Friends of the Library

June 20th from 2pm - 4pm

Story Teller Miss Licorice

July 28th at 3:00pm



PHOTOGRAPHS BY JIM WIDMER



Photographs taken by Village of Theresa resident JIM WIDMER are now available for viewing on the Wisconsin Historical Website. Among the approximately 160 black and white photos you will find photos of Cheese Making, Town of Theresa Barns, and area Friday Night Fish Fry's. To View Mr. Widmer's photos go to:

- www.wisconsinhistory.org
- On the right side of the page below "Photos & Images" left click on "Photographs"
- On the left side of the screen left click on "Search Images"
- Below "Basic Search", in the rectangular box, type "Jim Widmer" (without the quotes)
- Left click on "Search" button

More photos will be added as they become available.

Jim Widmer's photos can also be viewed at the Theresa and Lomira Public Library.

Fireworks-July 4th

Best wishes from the police department towards everyone. Hope you have a great summer and July 4th. With each summer comes inquiries and complaints to the PD about the use of consumer fireworks. As a reminder, the purchase, possession or ignition of consumer fireworks can be unsafe for the user and lead to devastating burns, injuries and fires. Per State Law, any item that emits smoke, flies in the air or goes BOOM is illegal and is subject to confiscation and or a fine being issued. Please respect your neighbors and enjoy the safe and legal displays this summer as we celebrate our Nation's Birthday!

Public Fire Protection Fee

The public fire protection fee is used to support and maintain the Village of Theresa hydrants and water utility system which is used solely for the purpose of extinguishing fires within the service area. The Village of Theresa previously included the collection of the public fire protection fee on the Village's tax levy (property tax bills). In November of 2011, the Village Board of Trustees passed a resolution authorizing the public fire protection fee be removed from the tax roll and collected from the general service water customers (quarterly utility bill); effective January 1, 2012. The rates were established and are based on an equivalent meter method.

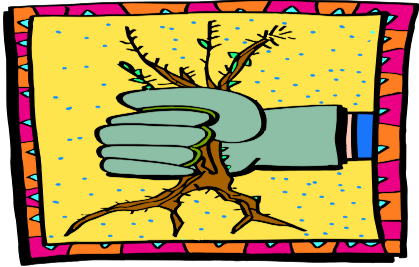
For more information regarding the Public Fire Protection fee, please contact Director of Public Works, Dennis Guelig at (920) 488-4003.

BULK PICK-UP AND YARD WASTE

The Village of Theresa holds two Bulk Pick-Ups per year; one on the 3rd Tuesday in April and one on the 3rd Tuesday in October. There may be a fee associated with the pick-up of tires and appliances such as: refrigerators, freezers, stoves, washers, dryers, dehumidifiers, air conditioners, etc... The Village is no longer authorized to pick up computers, computer monitors, printers, fax machines, TV's, VCR's, DVD players or cell phones. Other items that are not included as part of Bulk Pick-Up are: building waste, recyclables or any other item that may be disposed of during routine pick-up. **YARD WASTE**, leaves, grass clippings and brush will not be accepted during waste pick up or Bulk Pick-Up. The yard waste disposal site is located behind River's Edge Park. Only brush should be placed on the brush pile. The dumpster is for grass clippings, small leaves, small plants and garden waste only.

NO BAGS, CONTAINERS, LANDSCAPING EDGEING OR TIMBERS.

THE DISPOSAL SITE IS FOR YARD WASTE AND BRUSH ONLY. DUMPING OF GARBAGE, FURNITURE, CARPETING, ETC. IS PROHIBITED!!



BRUSH, GRASS AND WEEDS

Please keep lawns and grasses under 6" in length for public health and safety. For a list of noxious weeds that must be destroyed prior to the bloom or flower state please see §127-1.C under the Ordinances tab on the Village website.

2012 Waste & Recycling Pick-Up

Waste and recycling pick up takes place every Tuesday with the following exceptions:

Memorial Day
(Wednesday Pick-Up)
Labor Day
(Wednesday Pick-Up)
Christmas Day
(Wednesday Pick-Up)

Street Light Disconnections

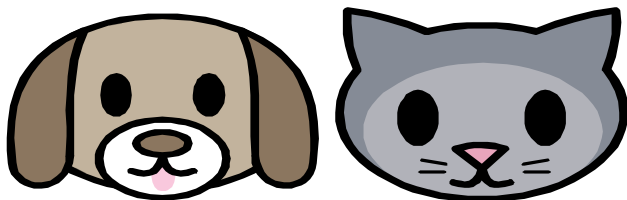
40 street lights in various locations throughout the village have been disconnected saving the Village approximately \$5,000.

Theresa Ambulance Service

The Theresa Ambulance Service completed 257 calls for service in 2012. The ambulance service also performed standby community service at high school football games, parades, practices and fire department calls for service. If you or someone you know is interested in becoming a part of the service either as an Emergency Medical Technician (EMT) or as a driver, please contact Kevin Baerwald at (920) 488-6301. Also contact Kevin if your organization or group would like a tour of the ambulance.

Open Burning

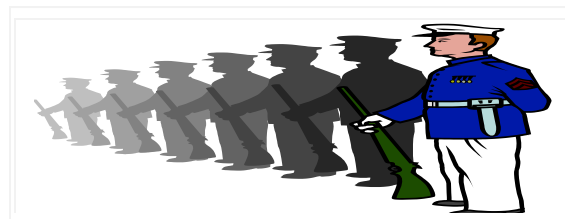
Per Village Ordinance 5-2-9, no person, firm or corporation shall build any outdoor fire within the Village limits. This prohibition includes burning of garbage, YARD WASTE, construction waste, and debris at construction sites. Exceptions to this section include ceremonial campfires, or outdoor cooking in/or over a fire contained in a device or structure approved by the Fire Chief Warren Stanke....BEFORE BURNING!



All dogs and cats 6 months of age or older must be licensed by April 1, 2012. Proof of rabies vaccination, spaying/neutering is required. \$15 for males/females and \$10 for spayed/neutered animals. Any owner or person in charge of any dog, cat, horse or other animal shall not permit solid feces matter to be deposited on any street, alley or other private/public property unless such matter is immediately removed. ANY PERSON WHO VIOLATES THE ABOVE MENTIONED ORDANCES MAY BE SUBJECT TO FOFETURE. No person having in his/her possession or ownership any animal or fowl shall allow the same to run at large within the Village. The owner of any animal, whether licensed or unlicensed, shall keep his/her animal tied or enclosed in a proper enclosure so as not to allow said animal to interfere with the passing public or neighbors. Any animal running at large unlicensed and required by state law or Village ordinance to be licensed, shall be seized by a law enforcement.

Theresa American Legion

Post 270 thanks all returning Iraq and Afghanistan Veterans for their service and welcomes them to attend our monthly meetings held on the first Tuesday of each month at 7:30pm at 101 Church Street in the Village of Theresa. The Clubhouse is also open every Wednesday at 7:30pm. Miller, Justman, Guelig Post 270 and its Auxiliary of the American Legion promotes or sponsors the following activities for the young people: Badger Boy and Badger Girl State, Dodge County Student Government Day, American Legion Baseball, Little League and T-Ball and Lomira High School Post Prom Party.



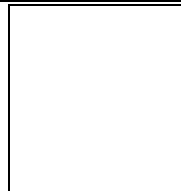
VOTER REGISTRATION

If you are a new resident, have experienced a name or physical address change; contact the Village Clerk to become a registered voter! Registering ahead of time will help you avoid having to stand in line at the polling place. For more information regarding voter registration, visit the Government Accountability Board website at: <http://gab.wi.gov>.

**Elections are held at the Theresa Public Library,
290 Mayville Street. Polls Open 7am-8pm.
2012 Election Dates: April 3rd, May 8th, June 5th,
August 14th and November 6th.**

Please share your Post
Office Box number and
report any change of
address to the Village
Clerk as soon as
possible.

Village of Theresa
202 S. Milwaukee Street
PO Box 327
Theresa, WI 53091



ADDRESS CORRECTION REQUESTED