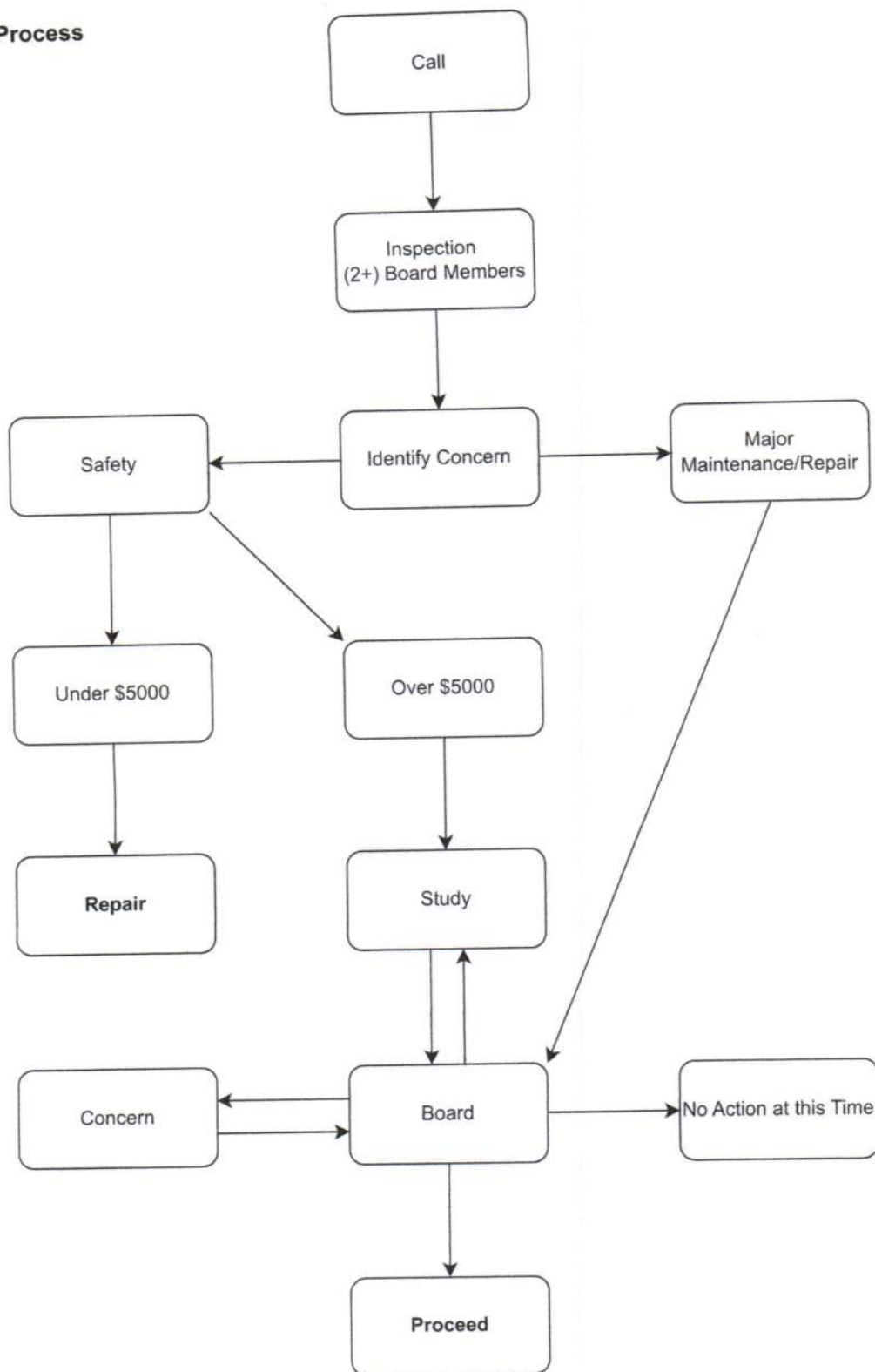


Decision Making Process Roads



ROAD EVALUATION/STUDY

- Road ranked by outside consultants
- Traffic volume
- Road right of way
- Is road properly placed
- Wetlands
- Utilities
- Encroachments
- Culverts
- Ditching

ROAD SPECIFICATIONS

- Survey/Engineering
- Right of way width (vegetation)
- Length of road
- Personal driveways
- Width of road surface
- Proper shouldering (shoulders/ditching)
- Utilities & mailboxes
- Dead End (Adequate turn around)