

EAGLE FIRE DEPARTMENT



2011 ANNUAL REPORT

MESSAGE FROM CHIEF HEIM

The Eagle Fire Department experienced a lot of growth and change during 2011! The department transitioned to a fully paid-on-call organization in which the dedicated men and women who serve the community now receive compensation for training and calls for service. While not only recognizing the dedication of our volunteers, it is anticipated that this transition will also help the department to actualize some of its long term recruitment and retention goals.

The Eagle Fire Department membership association agreed to fund a substantial grant that was received from the Wisconsin Department of Natural Resources. The department was awarded \$10,000 from the DNR as part of a 50% matching grant. The other \$10,000 was funded through the membership association. These funds were used to acquire wildland firefighting protective equipment, tools, and communications equipment that can be used by firefighters working in the field. More about this grant is explained in this report.

In December, the membership association adopted three local families and provided them with a meal and gifts (clothes and toys) for the children. What is important to note is that no fundraised or tax money was used for this project – all donated monies were directly from the members' own pockets. The families were very grateful to the Eagle Fire Department for making their holiday season brighter.

This year saw the certification of three new EMT's, two new intermediate technicians, four firefighters, and a fire officer who will continue to help our fire and EMS programs reach new heights.

Chief Heim graduated in December with a Masters of Public Administration degree from the University of Wisconsin – Oshkosh.

The fire department continues to foster a healthy fire prevention program. There were no recorded incidents of loss of life due to fire in our community during 2011.

We look forward to a safe and prosperous 2012.

Justin R. Heim, MPA, EFO
Fire Chief

CURRENT PROGRAM SERVICES OFFERED BY THE EAGLE FIRE DEPARTMENT

NON-EMERGENCY SERVICES:

- Fire Inspection
- Construction Plan Review
- Fire Investigation – Cause and Origin Determination
- Public Education
- Public Training (CPR, et cetera)
- Departmental Training
- Equipment Maintenance and Repair
- Data Collection, Record-keeping, and Analysis
- Smoke Detector Installation

EMERGENCY SERVICES:

- Firefighting
- Basic Life Support Emergency Medical Services
- Extrication
- Water Rescue
- Search and Rescue
- Mutual Aid Responses with surrounding departments
- Scene Stabilization and Security
- Natural Disaster Responses
- Man-made Disaster Responses



Eagle firefighters continued to conduct search and rescue operations the morning after the tornado struck in June 2010.

HUMAN CAPITAL MANAGEMENT AND STAFFING

Though volunteerism has been on a steep decline over the past several decades across the United States, we are pleased to report adequate staffing levels that consist of highly motivated individuals who are willing and able to meet the dynamic needs of the community. It is becoming increasingly difficult for volunteer and combination fire departments to recruit and retain quality, motivated people.

As of December 31, our fire department consists of the following personnel:

- 1 Career Fire Chief
- 31 Paid-on-call Firefighters and EMTs
- 13 Part-time Firefighters and EMTs augment daytime staffing

Of the paid-on-call personnel, **45%** have length of service time greater than 5 years. Of those personnel, the average length of service is **17 years**. Outliers of 33 and 42 years of service exist.

This information is statistically significant in several ways. First, it reflects the long-term commitment that volunteers have to the organization and the community. Second, it demonstrates the experience that will be lost when those members retire. It is important for the department to recruit new members on a continual basis so that new personnel can be conditioned to carry the torch when our senior members retire.

The department is currently staffed seven days a week with part-time staffing. Because Eagle is a bedroom community, most of our volunteer personnel work in other cities. Their commute reduces our staffing to critical levels during the day. As a result, part-time staffing was added in 2005 to provide a minimum response level while our volunteers were out of the community.

The Eagle Fire Department currently employs 13 part-time firefighters and EMTs, of which 7 are affiliated with other fire service organizations in and around Waukesha County. Our part-time firefighters and EMTs work Monday through Friday from 6:00 am – 6:00 pm and from 8:00 am – 4:00 pm on the weekends. This ensures that when someone calls 911, an ambulance or fire truck will respond promptly to assist them.

Our part-time staff conduct routine maintenance on the apparatus each week as well as other projects that are assigned by the fire chief in addition to answering calls for service. Their commitment to the organization reduces the workload on the volunteer members and allows them to focus their time and energy on training to better prepare themselves for emergency calls for service.

TRAINING

This year was a record year for training by the Eagle Fire Department. Firefighters completed a total of **4728** hours of training in firefighting and emergency medical services.

Topics covered for the year included:

- Communications and Mutual Aid Box Alarm System review
- Pre-planning fire incidents and scene response
- Pediatrics trauma and medical emergencies
- Self-Contained Breathing Apparatus
- Fire Control
- Hypothermia
- Search and Rescue
- ...and many more!

Three new Emergency Medical Technicians were licensed during the year.

Two EMT's were certified as an EMT-Intermediate. In this course, students learn about advanced life support treatment such as starting intravenous lines and administering lifesaving medications.

Four firefighters were certified as Firefighter I.

One firefighter was certified as a Fire Officer I.

Two firefighters attended a fire inspection class in which they were certified at the Fire Inspector I/II level.

Three EMT's attended conferences at the Wisconsin EMS Association's annual convention.

Five firefighters attended a seminar on fire investigation hosted by the Eagle Fire Department.

Assistant Chief Baker attended a two-week (80 hour) fire investigation course sponsored by the National Fire Academy and held at Waukesha County Technical College.

Chief Heim attended the Fire Department Instructors Conference in Indianapolis, Indiana where he attended numerous leadership, strategy and tactics seminars.

Chief Heim graduated from the University of Wisconsin – Oshkosh with a Masters of Public Administration (MPA) degree.

A huge accomplishment in 2011 included co-scheduling EMS training with the Mukwonago Fire Department. This allows staff from both departments an opportunity to make up missed training by attending at either fire department. The schedules are the same as are the learning materials such as PowerPoint, handouts, and practical skills evolutions. This will be expanded to include fire trainings in 2012.

APPARATUS AND RESOURCES

The Eagle Fire Department is proud to maintain a modern fleet which includes the following apparatus:

- 2006 Pierce Enforcer Engine
- 2006 Medtech Ambulance
- 2006 Ford F350 Brush Truck
- 2006 Ford Escape Staff Vehicle
- 2002 Sterling Tender
- 1997 EVI Heavy Rescue
- 1997 Medtech Ambulance
- 1994 John Deere Gator Off-road Vehicle
- 1991 Pierce Dash Engine



COMMUNITY INVOLVEMENT

The Eagle Fire Department is extremely involved in the community. As one of three sponsors of the Kettle Moraine Days festival in June, the department works diligently to raise funds that help offset the financial burden to the tax base. The department also hosts a pancake breakfast / open house during the Eagle pumpkin party on Halloween weekend. Funds raised during the pancake breakfast also help to purchase equipment.

In 2011, the membership of the Eagle Fire Department agreed to fund a Wisconsin Department of Natural Resources grant. In accepting this grant, the membership pledged **\$10,000** in matching funds to procure wildland firefighting gear, new communications radios, and hand tools for a total grant award of \$20,000. This equipment will allow firefighters to better attack wildland fires in Eagle in a safer, more efficient manner.

Equipment procured through this grant include

- 35 sets of wildland firefighting response gear
- 35 wildland firefighting helmets
- 35 wildland goggles
- 35 hydrocarbon filtering masks
- 4 wildland “swat” handtools
- 2 portable radios
- 10 command organizers
- 1 portable weather monitor

The membership also supported several other community organizations which include:

- Eagle Food Pantry
- Adopted 3 local Eagle families in need
- Eagle Park and Recreation – Sponsored a little league team
- American Lung Society Fight for Air Climb

CALLS FOR SERVICE

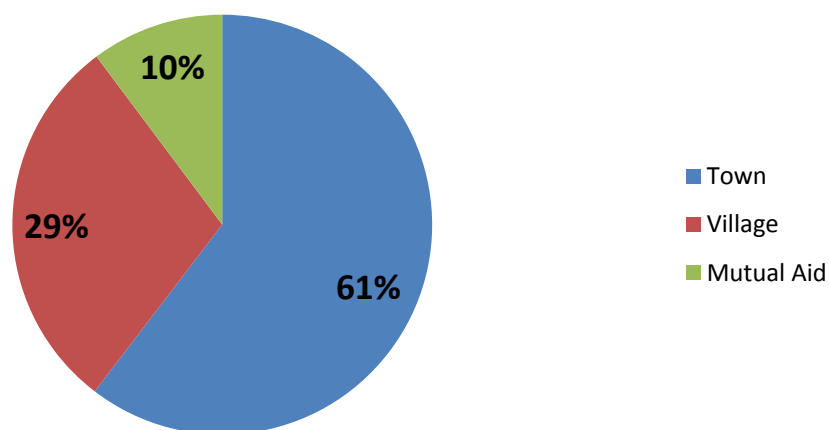
The Eagle Fire Department responded to **303** calls for service in 2011.

There were **31** mutual aid incidents.

There were **89** incidents in the Village of Eagle.

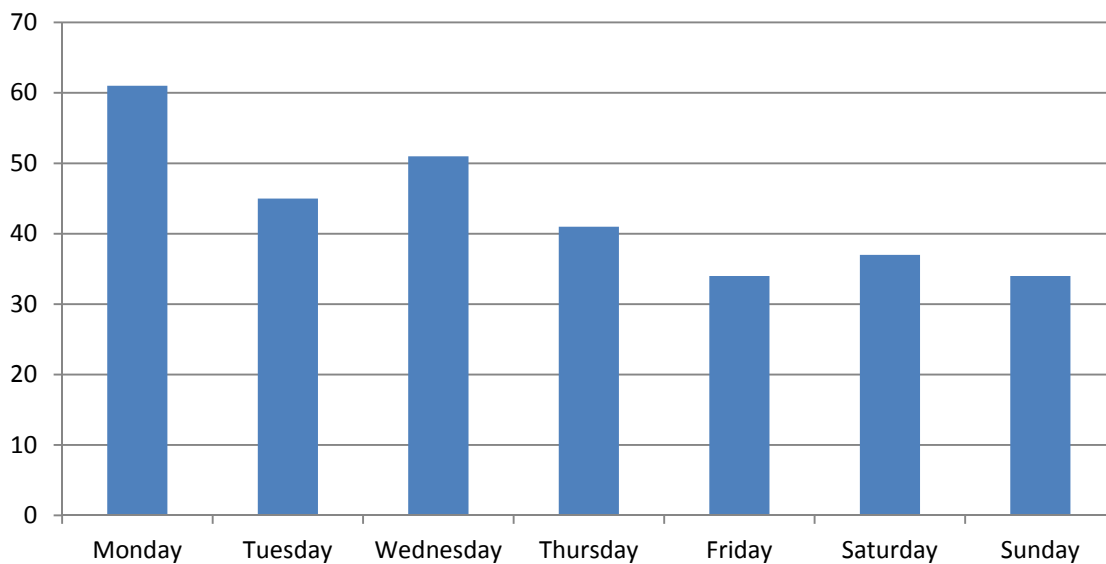
There were **183** incidents in the Town of Eagle

Total Number of Calls 2011 Percentage of Calls by Area

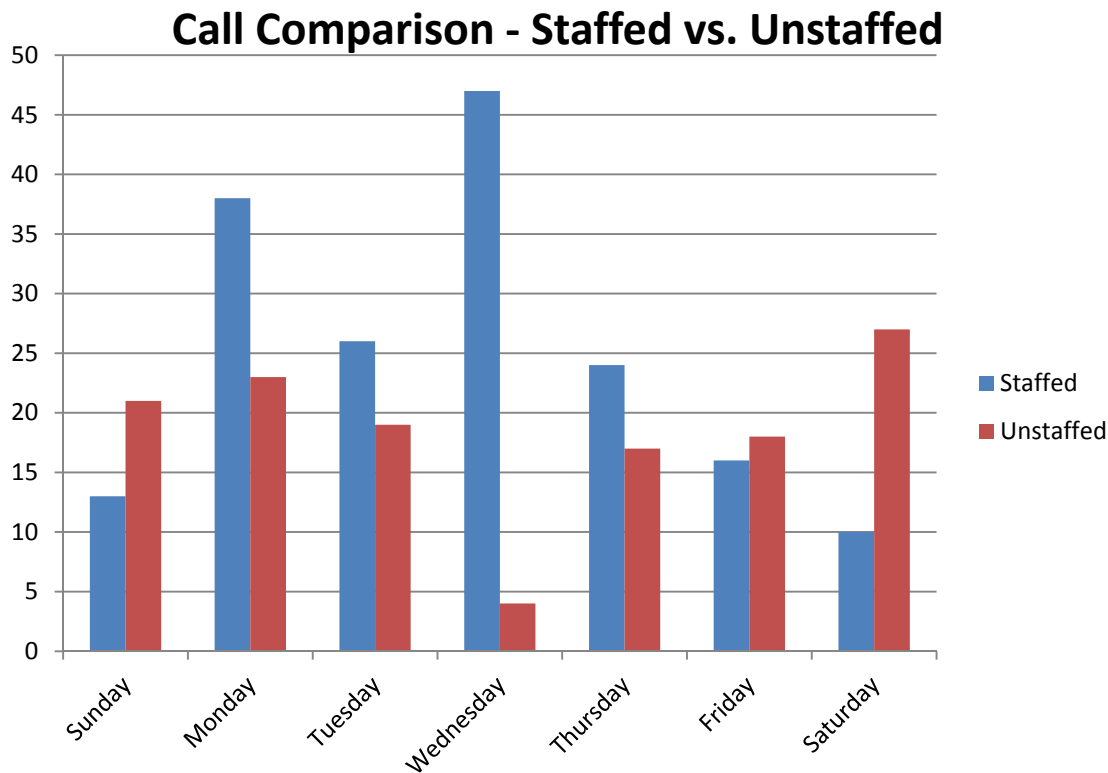


Our busiest day was **Monday**

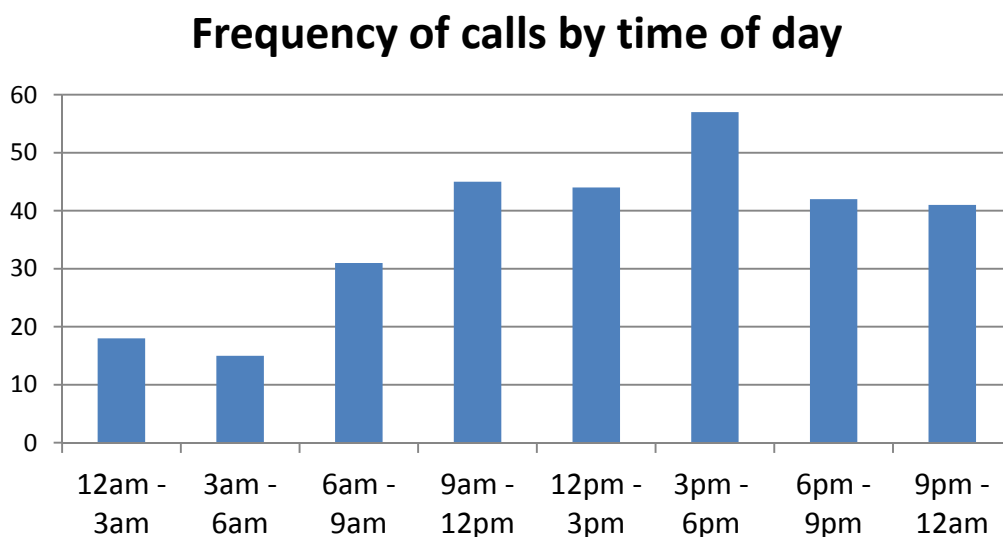
Distribution of Calls by Day of Week



Because the Eagle Fire Department relies so heavily on daytime staffing to provide coverage, this chart shows the frequency of calls when the station is staffed versus when the staffing is provided by our dedicated paid-on-call members who respond from home.



This chart shows the distribution of calls based on the time of day. The station is generally manned from 6:00 am – 6:00 pm and this chart confirms that the peak of our call volume is during those times.

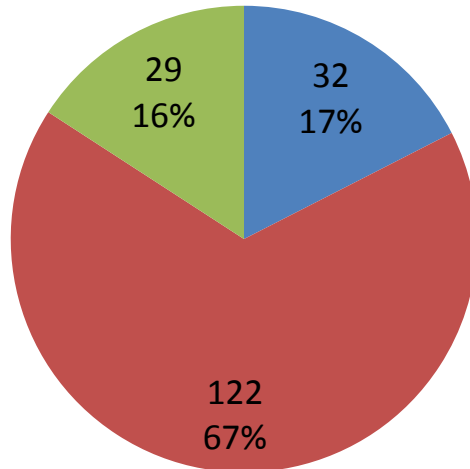


The next group of charts shows the breakdown of call types in the Town of Eagle and the Village of Eagle. There were **two** structure fires in the Village of Eagle during 2011, resulting in

total property loss of approximately **\$52,000**. There were **three** structure fires in the Town of Eagle, resulting in total property loss of approximately **\$167,000**.

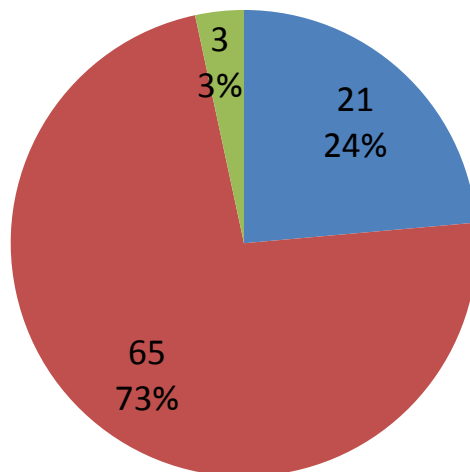
Town of Eagle

■ Fire ■ EMS ■ Motor Vehicle Crash



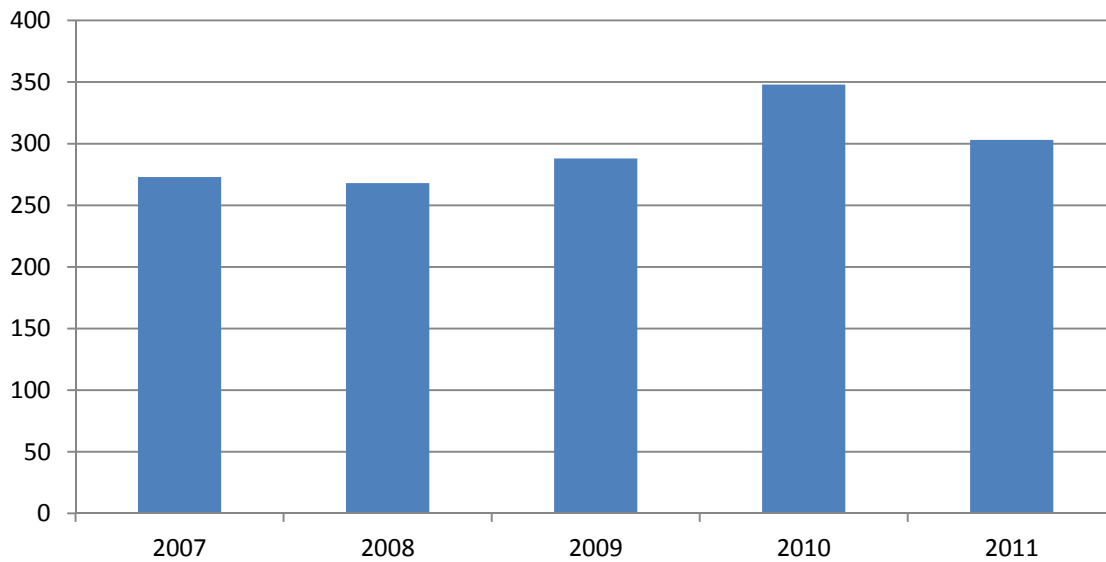
Village of Eagle

■ Fire ■ EMS ■ Motor Vehicle Crashes



HISTORICAL OVERVIEW OF CALLS FOR SERVICE

Call Volume 2007 - 2011



Since 2007, our annual call volume has remained fairly static with an aberrancy noted in 2010 due to the tornado.

