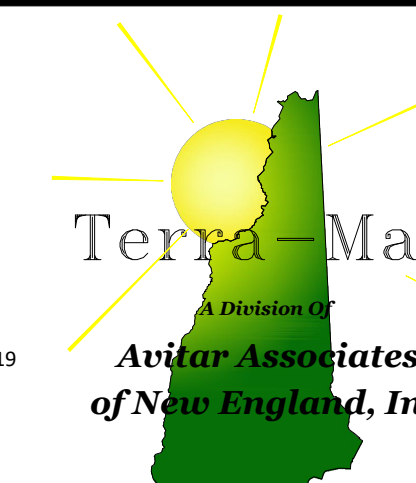


NEWBURY, VT

HAVERHILL

BRADFORD, VT



Phone 603-798-4419

Fax 603-798-4263

Avitar Associates of New England, Inc.

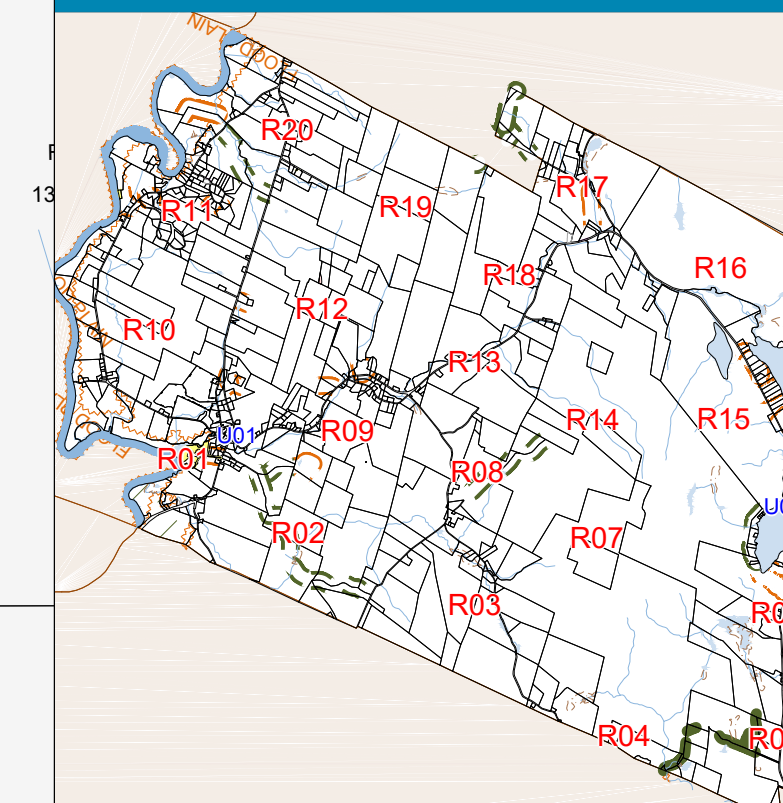
www.avitarassociates.com  
TerraMap@avitarassociates.com

# Town of PIERMONT Grafton County New Hampshire

## LEGEND

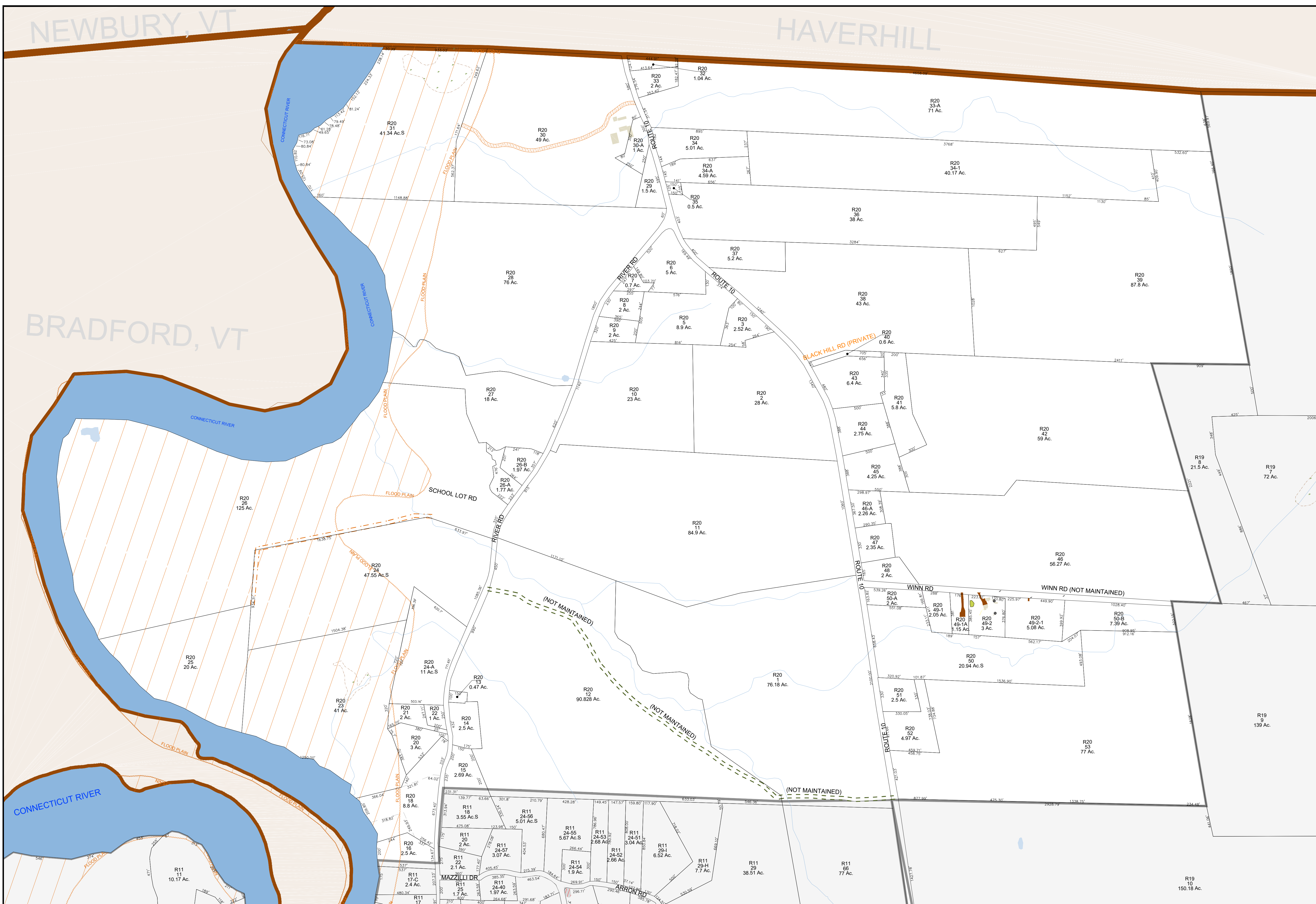
- Lot-Sub Acreage 12-1 200 AcS
- S-Survey C-Calculated Dimensions (Feet) 200'
- Not Maintained Private Road
- Tie Line / Merged Lot
- Stonewall
- Barbwire Fence
- Fence
- Private & ROW Access
- River
- Wetland
- Lake or Pond
- Transmission Line
- Conservation Easement
- Open Space/Common Land
- Structure
- Lake District
- Village District
- Flood Plain - 100 Yr
- Flood Plain - 500 Yr
- Drainage Easement
- Slope & Drainage
- Well Easement
- Water/Sewer Easement
- Fire Pond
- Area In Contention

## MAP INDEX



## MAP NUMBER

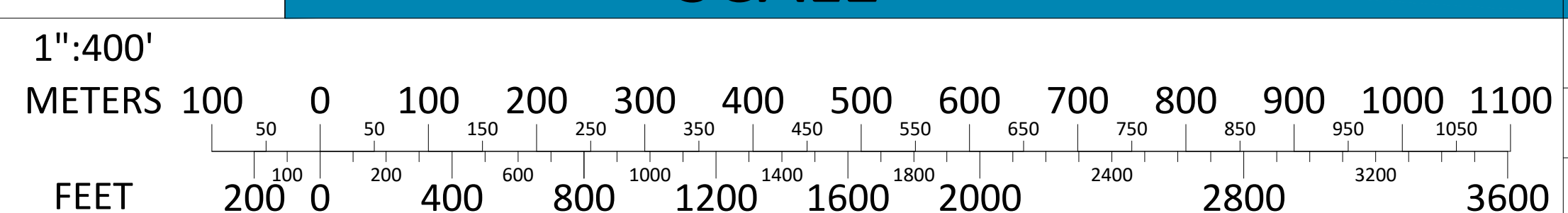
# R20



THE HORIZONTAL DATUM IS THE NEW HAMPSHIRE STATE PLANE COORDINATE SYSTEM, NAD 83.

FOR ASSESSMENT PURPOSES  
NOT TO BE USED FOR CONVEYANCES

REVISED APRIL 1, 2023



## MAP NOTES

