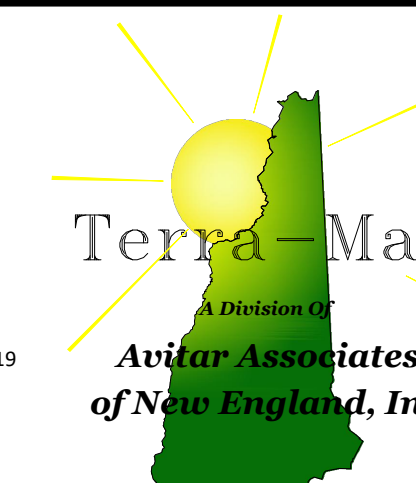


NEWBURY, VT

HAVERHILL

BRADFORD, VT



Phone 603-798-4419

Fax 603-798-4263

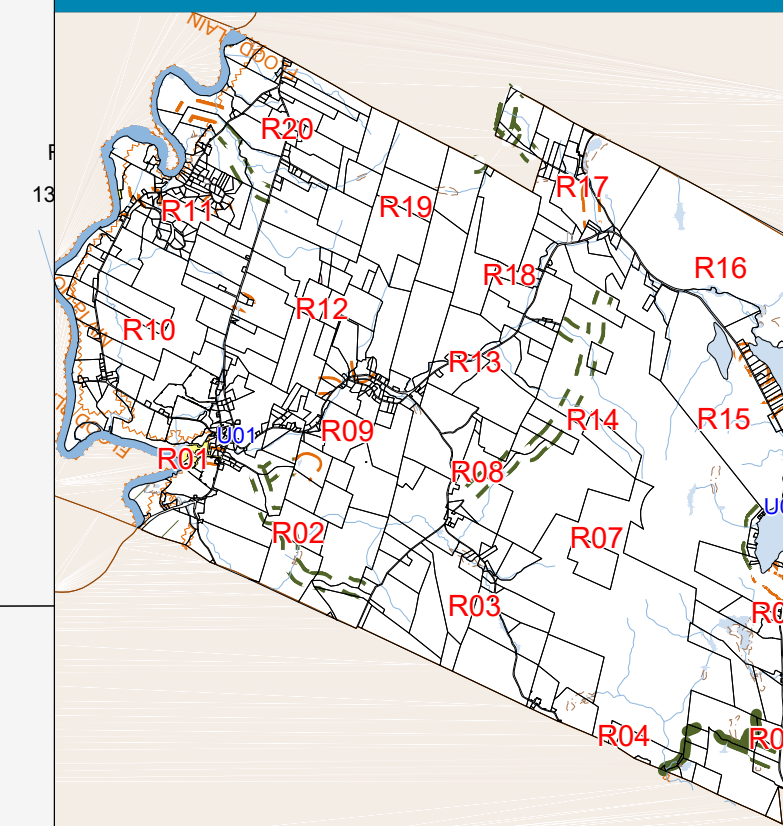
www.avitarassociates.com
TerraMap@avitarassociates.com

Town of PIERMONT Grafton County New Hampshire

LEGEND

- Lot-Sub 12-1
- Acreage 200 AcS
- S-Survey C-Calculated
- Dimensions (Feet) 200'
- Not Maintained
- Private Road
- Tie Line / Merged Lot
- Stonewall
- Barbwire Fence
- Fence
- ROW Access
- River
- Wetland
- Lake or Pond
- Transmission Line
- Conservation Easement
- Open Space/Common Land
- Structure
- Lake District
- Village District
- Flood Plain - 100 Yr
- Flood Plain - 500 Yr
- Drainage Easement
- Slope & Drainage
- Well Easement
- Water/Sewer Easement
- Fire Pond
- Area In Contention

MAP INDEX



MAP NUMBER

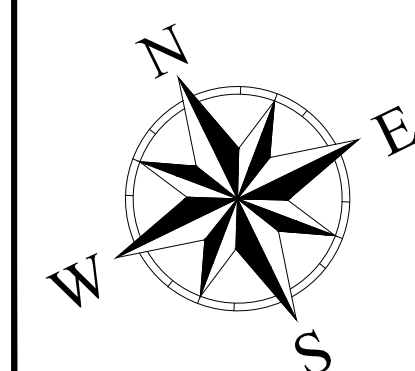
R20



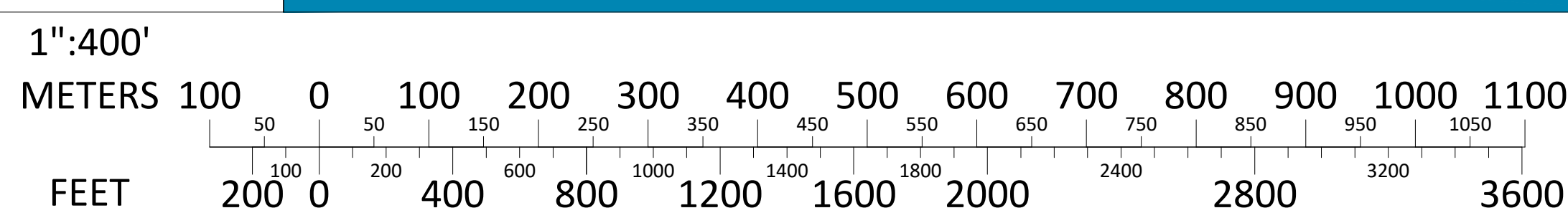
THE HORIZONTAL DATUM IS THE NEW HAMPSHIRE STATE PLANE COORDINATE SYSTEM, NAD 83.

FOR ASSESSMENT PURPOSES
NOT TO BE USED FOR CONVEYANCES

REVISED APRIL 1, 2025



SCALE



MAP NOTES