

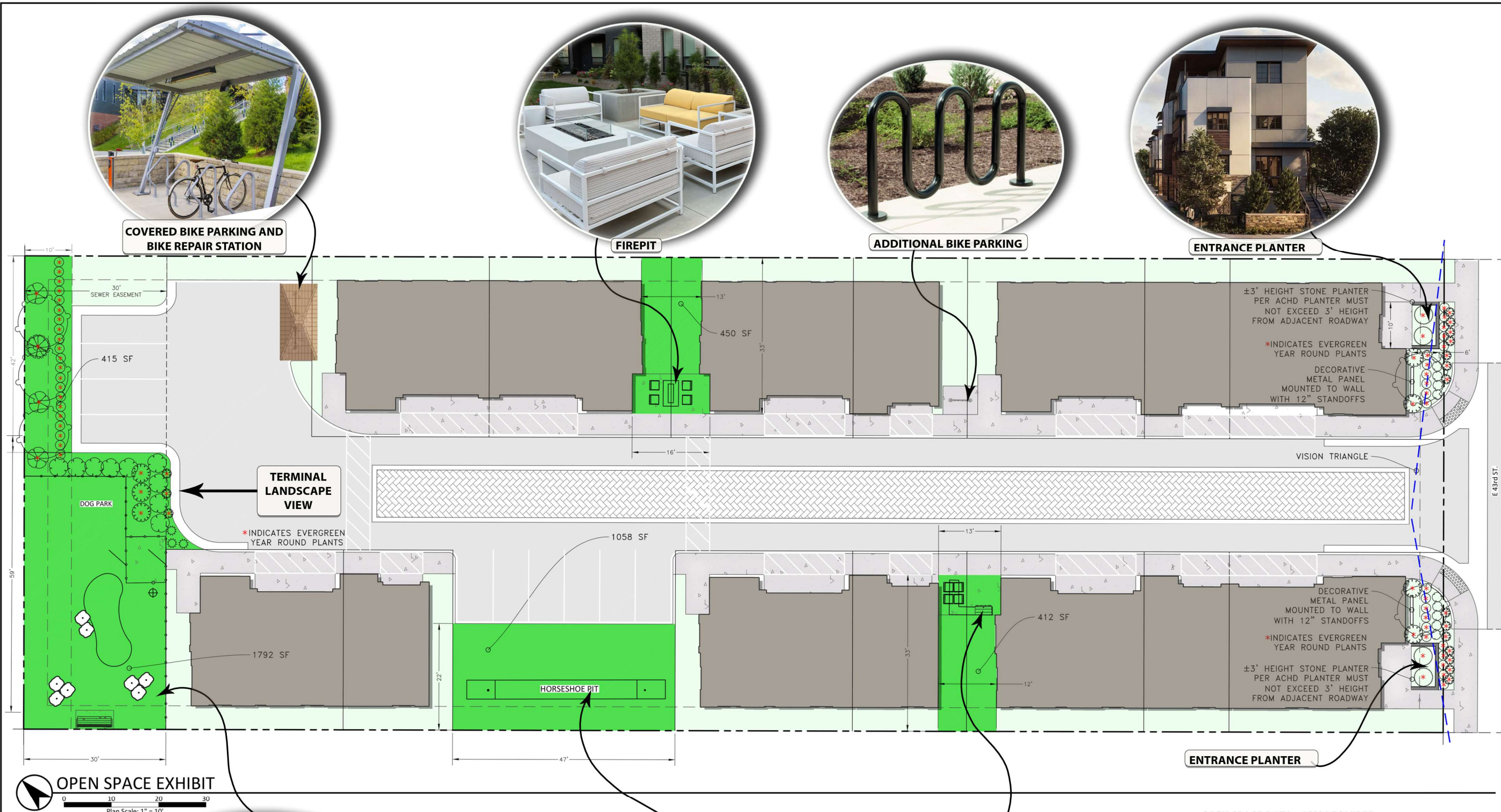
REVISIONS		DATE
NO.	ITEM	

RIVERVILLAS SUBDIVISION
GARDEN CITY, ID
OPEN SPACE AND AMENITIES EXHIBIT



DESIGN BY:	MPH
DRAWN BY:	MPH
CHECKED BY:	AY
DATE:	OCTOBER 2024
PROJECT:	24-122

SHEET NO.
EX1.0



OPEN SPACE DATA - 10% REQUIRED

OVERALL SITE DATA	
TOTAL PLAT SITE DATA	
TOTAL SITE AREA	29991 SF/0.69 ACRES
TOTAL OPEN SPACE AREA DATA	
QUALIFIED OPEN SPACE	4127 SF/0.095 ACRES
PERCENT QUALIFIED OPEN SPACE	13.7% PROVIDED

LEGEND	
	QUALIFIED OPEN SPACE
	NON QUALIFIED OPEN SPACE

GENERAL OPEN SPACE NOTES

1. QUALIFIED OPEN SPACES SHALL NOT BE LESS THAN 10' IN WIDTH.
2. ALL OPEN SPACE WILL BE LOCATED WITHIN EASEMENTS AND MAINTAINED VIA A COMMON MAINTENANCE AGREEMENT. ALL OPEN SPACE SHALL BE THE RESPONSIBILITY OF THE OWNER OR OWNERS ASSOCIATION FOR THE PURPOSE OF MAINTAINING THE COMMON AREA AND IMPROVEMENTS.

