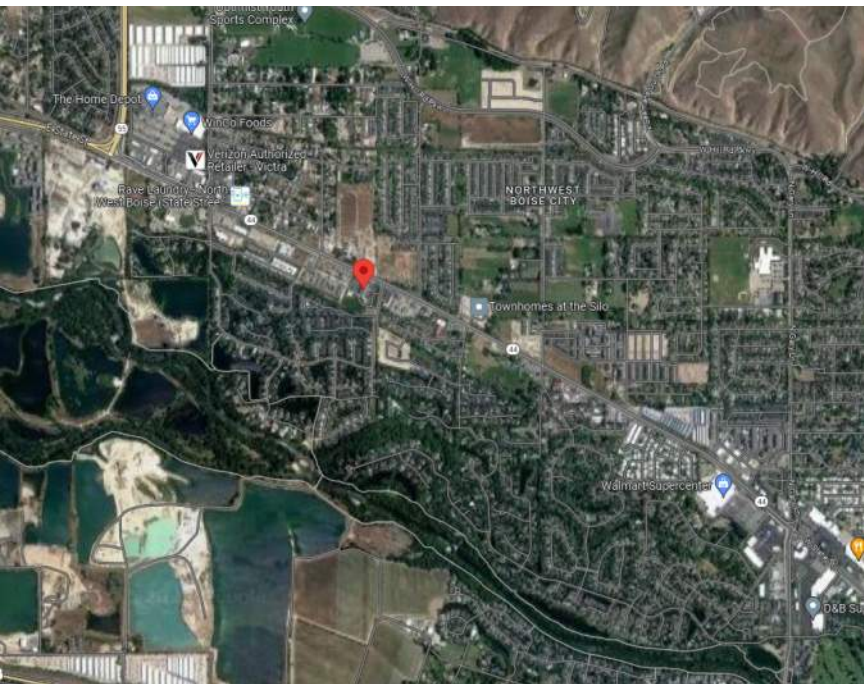


AMBROSE SCHOOL PORTABLES

9655 W STATE ST. GARDEN CITY, ID 83714

VICINITY MAP



PROJECT INFORMATION

ADDRESS :	9655 W STATE ST GARDEN CITY, ID. 83714
JURISDICTION :	CITY OF GARDEN CTY
OCCUPANCY GROUP :	EDUCATIONAL
CONSTRUCTION TYPE :	TYPE V-B
ASSESSORS PARCEL NUMBER :	S01514346816
ZONING :	R-20
SITE AREA:	6.388 ACRES OR 268,261 SF
PROPOSED BUILDING AREA:	5,007 SF
MAX BUILDING HEIGHT :	35'-0"
PROPOSED BUILDING HEIGHT:	12' - 9-1/2"
STORIES :	1 STORY
SETBACKS:	
FRONT	5'
STREET SIDE	5'
REAR	5'
INTERIOR SIDE	0'

SHEET INDEX

G1.1	COVER SHEET
G1.2	CONCEPTUAL EXTERIOR PERSPECTIVES
L1.0	LANDSCAPE PLAN
L2.0	LANDSCAPE DETAILS
SP AS1.00	ARCHITECTURAL SITE PLAN
SP ASD1.00	SITE DETAILS
A1.1	FIRST FLOOR PLAN PORTABLES A & C
A1.2	FIRST FLOOR PLAN PORTABLE B
A1.3	ROOF PLAN
A2.1	ELEVATIONS PORTABLE A + C
A2.2	ELEVATIONS PORTABLE B
A2.3	ELEVATIONS PORTABLE C

DESIGN TEAM

ARCHITECT :
ALC ARCHITECTURE
1119 EAST STATE STREET, SUITE 120
EAGLE, IDAHO 83616
JEFF LUKES
208.514.2713
JEFF@ALCARCHITECTURE.COM

LANDSCAPE ARCHITECT:
BAER DESIGN GROUP
539 S. FITNESS PL
EAGLE, ID 83616
GREG BAER
208.859.1980
GREG@BAERDGB.COM

APPLICABLE CODES

2018 INTERNATIONAL BUILDING CODE (IBC)
2018 INTERNATIONAL RESIDENTIAL CODE (IRC)
2018 INTERNATIONAL ENERGY CONSERVATION CODE (IECC)
2018 INTERNATIONAL MECHANICAL CODE (IMC)
2017 IDAHO STATE PLUMBING CODE
2017 NATIONAL ELECTRICAL CODE (NEC)
2018 INTERNATIONAL FIRE CODE (IFC)

ABROSE PORTABLES

9655 W STATE ST. | GARDEN CITY, ID 83714

DRAWN : Author
CHECKED : Checker
DATE : 04.21.2023
PROJECT
NUMBER : 23047
COVER SHEET

G1.1



--

REVISION	DESCRIPTION	DATE
#		

ALC
architecture

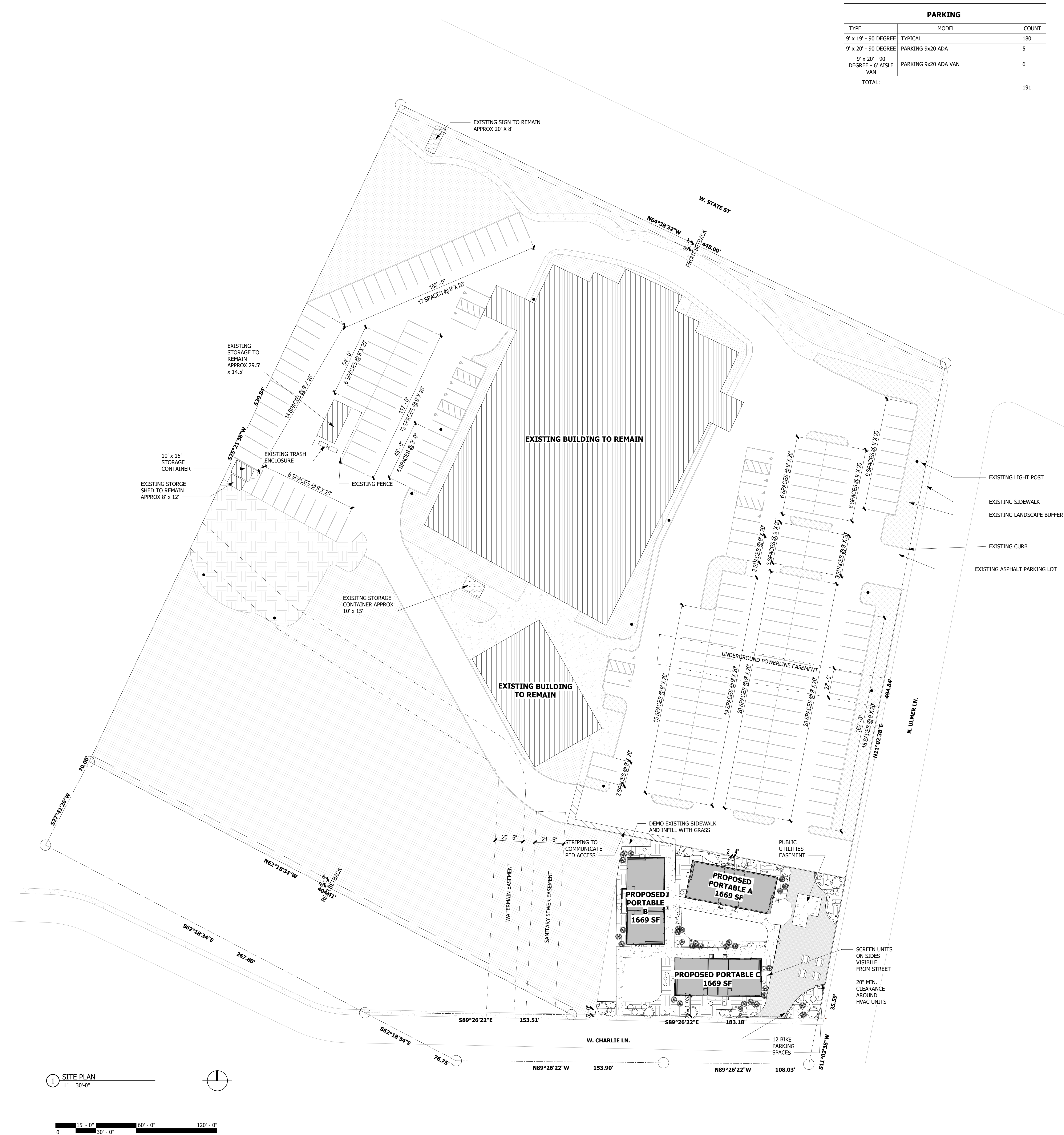
collaborative
1119 E. State Street, Suite 120 - Eagle ID 83616
208.514.2713

ABROSE PORTABLES

9655 W STATE ST. | GARDEN CITY, ID 83714

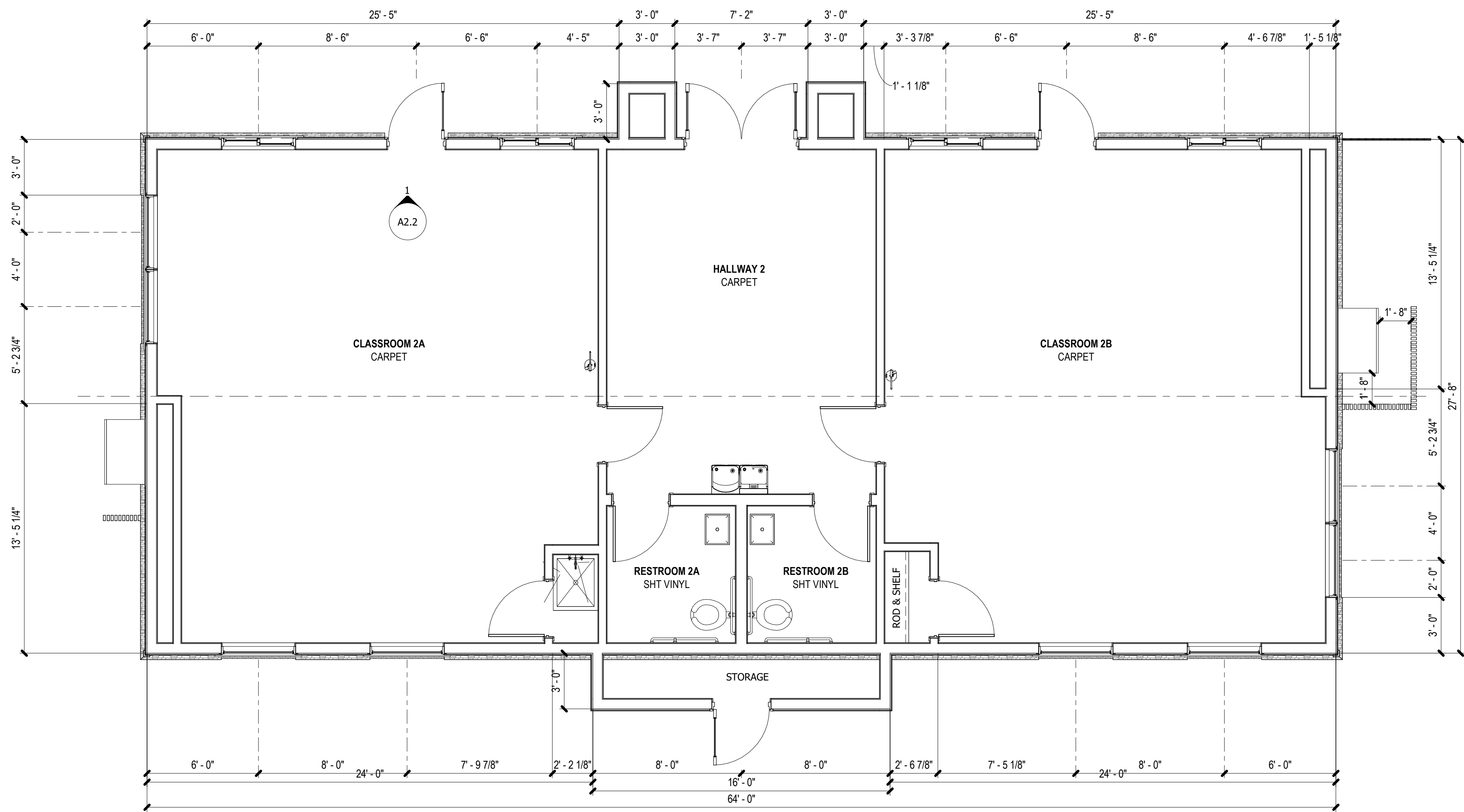
DRAWN :	Author
CHECKED :	Checker
DATE :	04.21.2023
PROJECT	
NUMBER :	23047
CONCEPTUAL EXTERIOR PERSPECTIVES	

G1.2



PARKING		
TYPE	MODEL	COUNT
9' x 19' - 90 DEGREE	TYPICAL	180
9' x 20' - 90 DEGREE	PARKING 9x20 ADA	5
9' x 20' - 90 DEGREE - 6' AISLE VAN	PARKING 9x20 ADA VAN	6
TOTAL:		191

PROJECT INFORMATION	
ADDRESS :	9655 W STATE ST GARDEN CITY, ID. 83714
JURISDICTION :	CITY OF GARDEN CITY
OCCUPANCY GROUP :	EDUCATIONAL
CONSTRUCTION TYPE :	TYPE V-B
ASSESSORS PARCEL NUMBER :	S01514346816
ZONING :	R-20
SITE AREA:	6.388 ACRES OR 268,261 SF
PROPOSED BUILDING AREA:	5,007 SF
MAX BUILDING HEIGHT :	35'-0"
PROPOSED BUILDING HEIGHT:	12' - 9-1/2"
STORIES :	1 STORY
SETBACKS:	
FRONT	5'
STREET SIDE	5'
REAR	5'
INTERIOR SIDE	0'



1 FIRST FLOOR BUILDING A + C
1/4" = 1'-0"

#	REVISION DESCRIPTION	DATE

ALC

architecture

collaborative

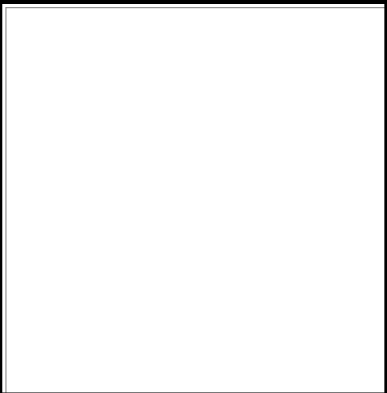
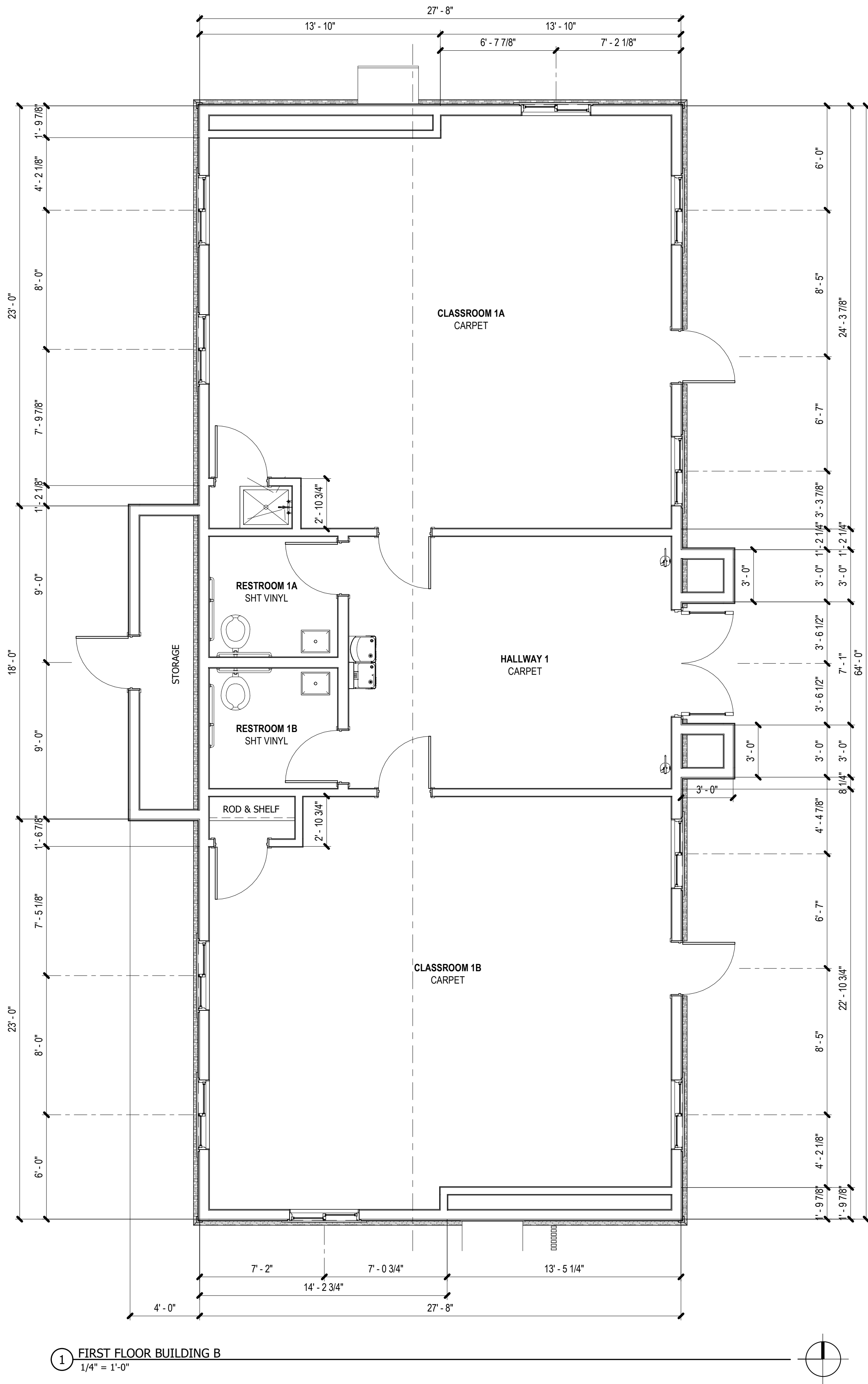
1119 E. State Street, Suite 120 - Eagle ID 83616
208.514.2713

ABROSE PORTABLES

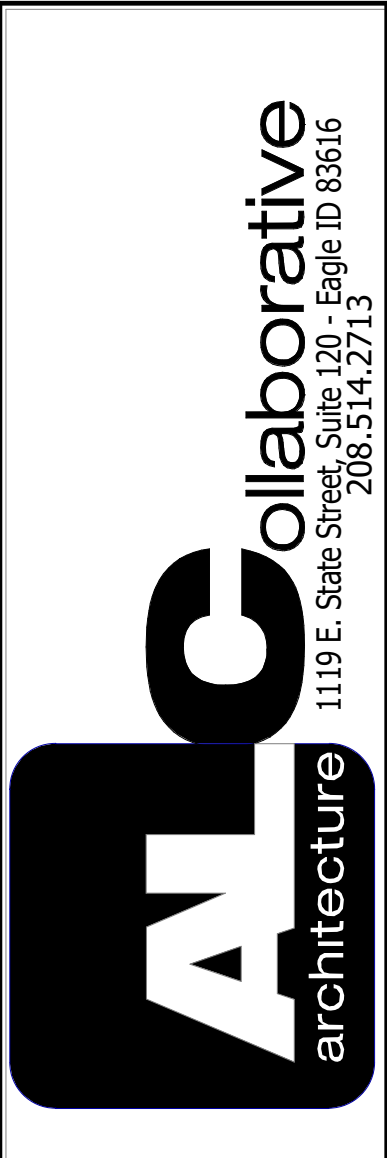
9655 W STATE ST. | GARDEN CITY, ID 83714

DRAWN :	CC
CHECKED :	JL
DATE :	04.21.2023
PROJECT	
NUMBER :	23047
FIRST FLOOR PLAN PORTABLES A & C	

A1.1



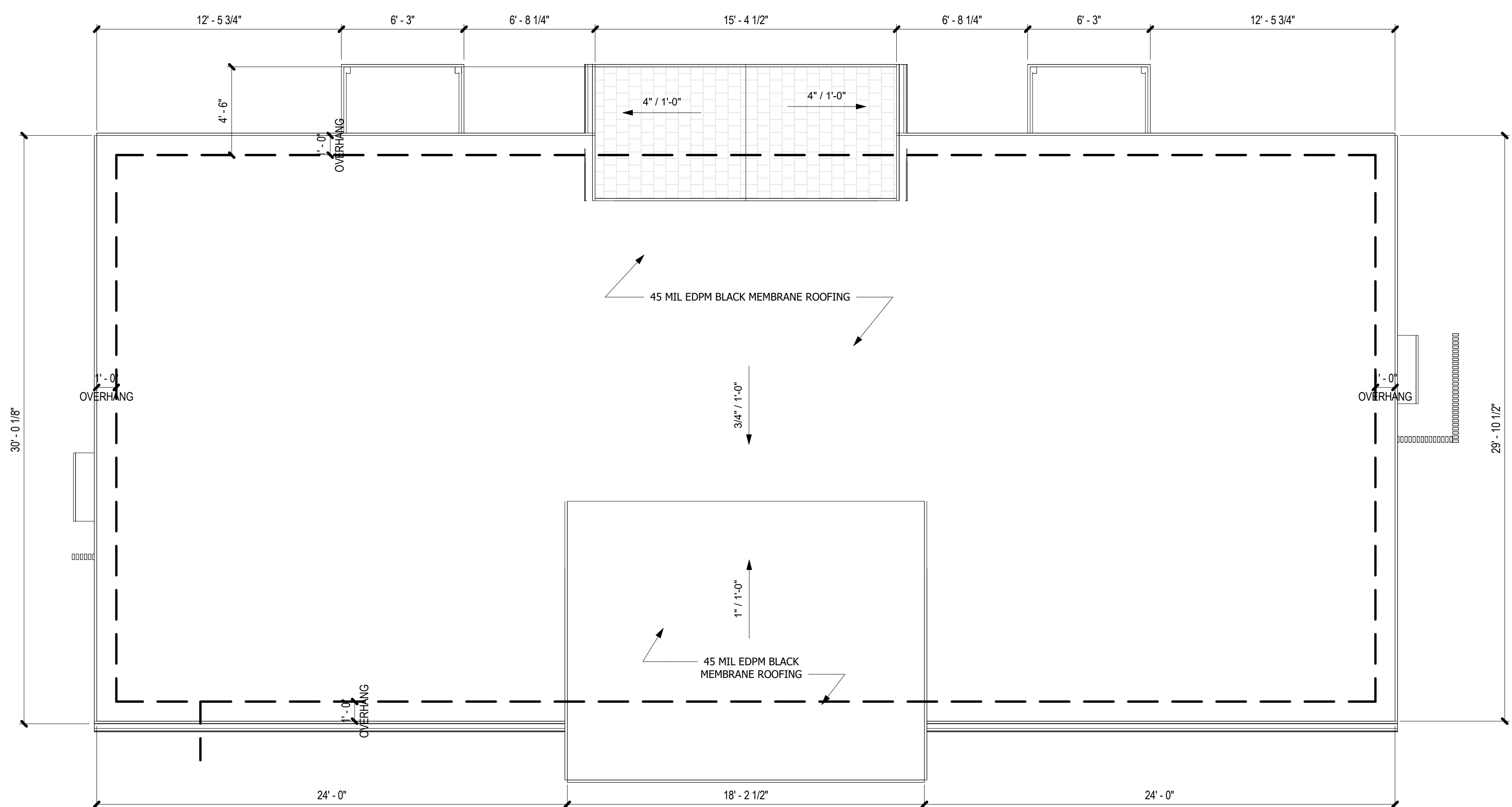
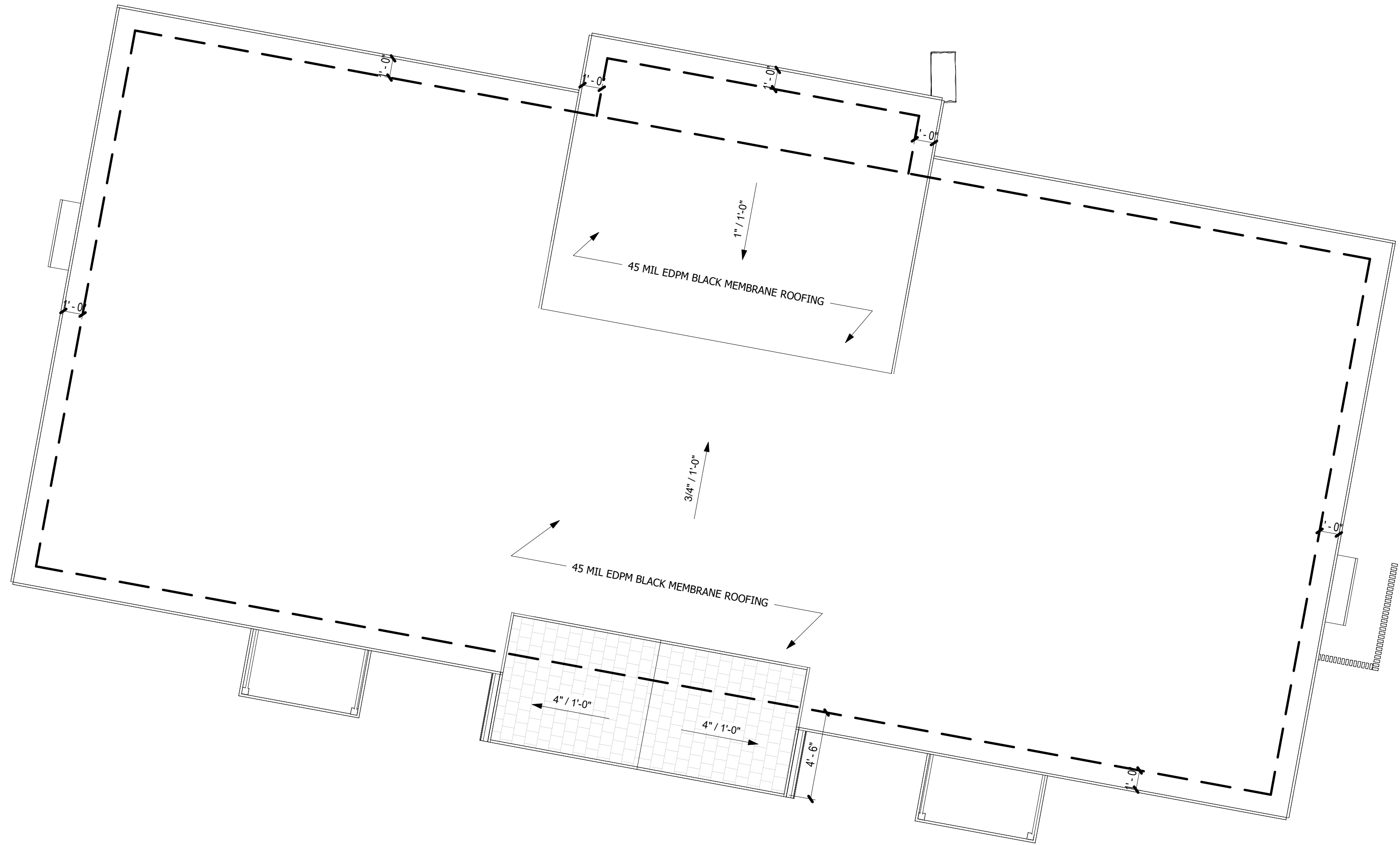
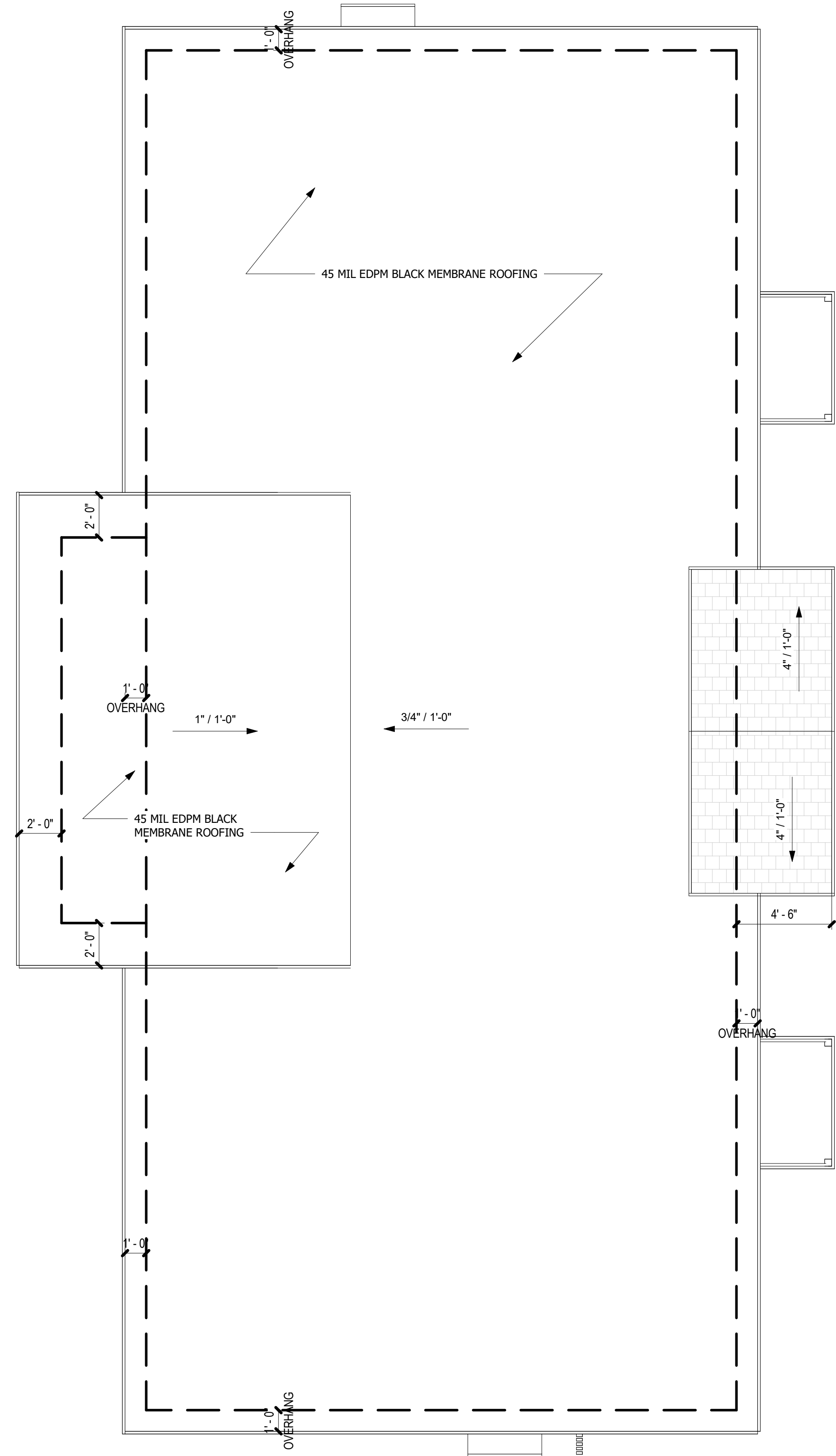
#	REVISION DESCRIPTION	DATE



ABROSE PORTABLES

9655 W STATE ST. | GARDEN CITY, ID 83714

DRAWN :	Author
CHECKED :	Checker
DATE :	04.21.2023
PROJECT	
NUMBER :	23047
FIRST FLOOR PLAN PORTABLE B	



1 ROOF PLAN
1/4" = 1'-0"

--

REVISION	DESCRIPTION	DATE
#		

ALC

architecture

collaborative

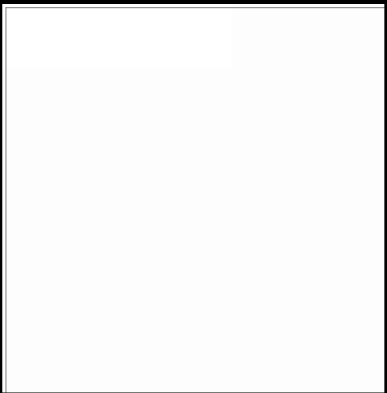
1119 E. State Street, Suite 120 - Eagle ID 83616
208.514.2713

ABROSE PORTABLES

9655 W STATE ST. | GARDEN CITY, ID 83714

DRAWN :	Author
CHECKED :	Checker
DATE :	04.21.2023
PROJECT	
NUMBER :	23047
ROOF PLAN	

A1.3



REVISION	DESCRIPTION	DATE
#		

ALC

collaborative

architecture

1119 E. State Street, Suite 120 - Eagle ID 83616
208.514.2713

ABROSE PORTABLES

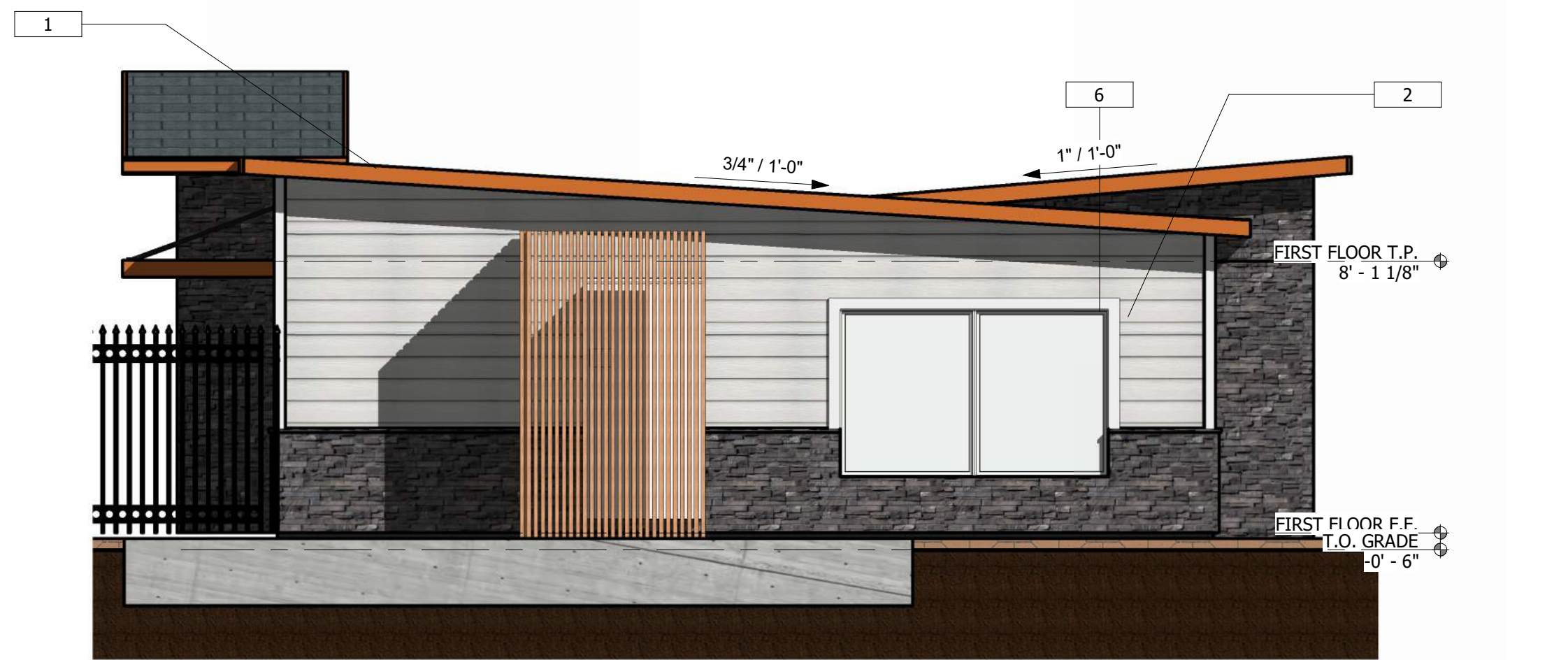
9655 W STATE ST. | GARDEN CITY, ID 83714

DRAWN :	Author
CHECKED :	Checker
DATE :	04.21.2023
PROJECT	
NUMBER :	23047
ELEVATIONS	
PORTABLE A + C	

- MATERIAL LEGEND
1. COPPER FASCIA
 2. WHITE 5/16" FIBER CEMENT LAP SIDING (7" EXPOSURE)
 3. LIGHT GRAY 4" (5/4) L.P. VERTICAL TRIM
 4. BLACK STONE WAINSCOT
 5. ASPHALT SHINGLE SIDING
 6. WOOD GRILLE SCREEN WALL
 7. 45 MIL EDPM BLACK MEMBRANE ROOFING
 8. WHITE EXTERIOR DOOR
 9. AWNING PER OWNER



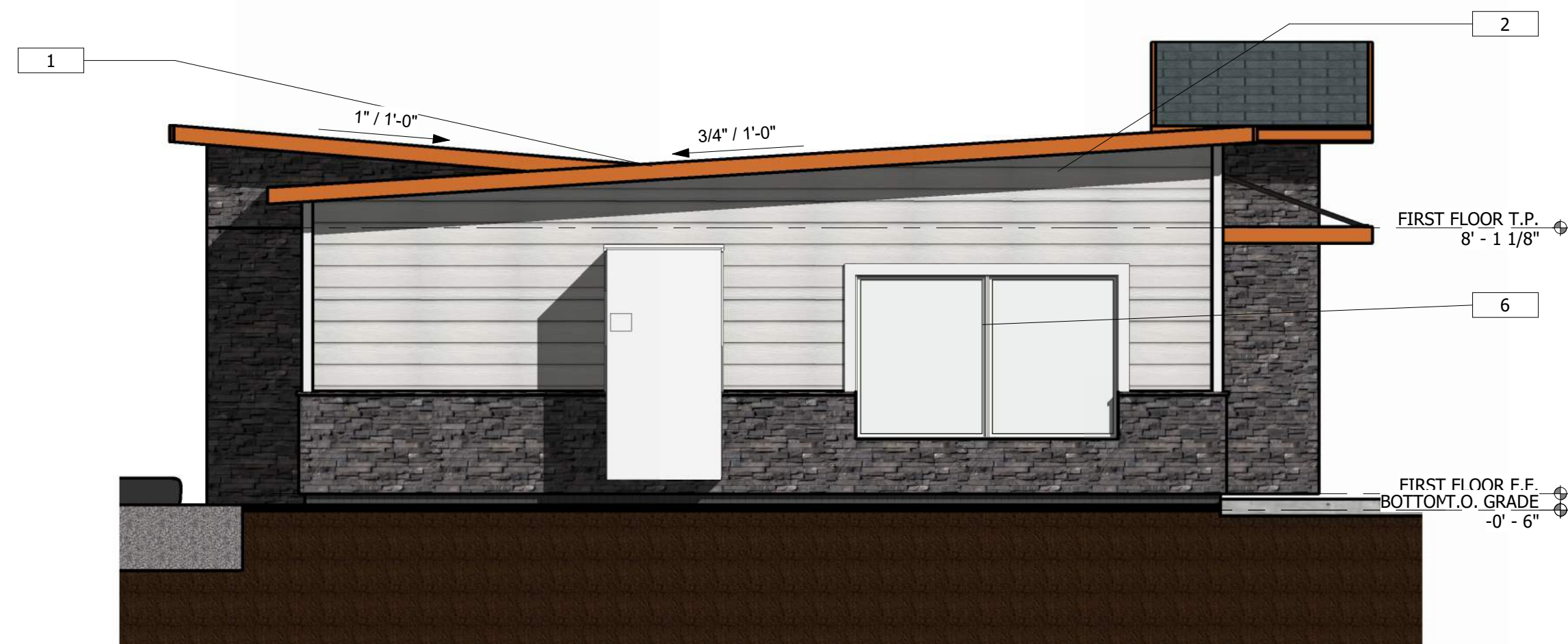
3 SOUTH ELEVATION PORTABLE A + C
1/4" = 1'-0"



1 EAST ELEVATION PORTABLE A + C
1/4" = 1'-0"



4 NORTH ELEVATION PORTABLE A + C
1/4" = 1'-0"



2 WEST ELEVATION PORTABLE A + C
1/4" = 1'-0"



3 WEST ELEVATION PORTABLE B
1/4" = 1'-0"



4 EAST ELEVATION PORTABLE B
1/4" = 1'-0"



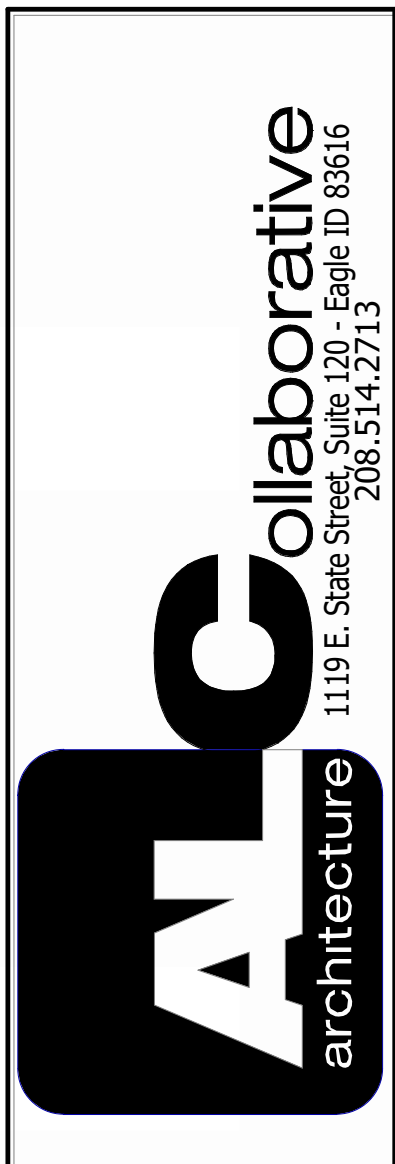
2 NORTH ELEVATION PORTABLE B
1/4" = 1'-0"



1 SOUTH ELEVATION PORTABLE B
1/4" = 1'-0"

- MATERIAL LEGEND**
1. COPPER FASCIA
 2. WHITE 5/16" FIBER CEMENT LAP SIDING (7" EXPOSURE)
 3. LIGHT GRAY 4" (5/4) L.P. VERTICAL TRIM
 4. BLACK STONE WAINSCOT
 5. ASPHALT SHINGLE SIDING
 6. WOOD GRILLE SCREEN WALL
 7. 45 MIL EDPM BLACK MEMBRANE ROOFING
 8. WHITE EXTERIOR DOOR
 9. AWNING PER OWNER

REVISION	DESCRIPTION	DATE
#		



ABROSE PORTABLES

9655 W STATE ST. | GARDEN CITY, ID 83714

DRAWN : Author
CHECKED : Checker
DATE : 04.21.2023
PROJECT
NUMBER : 23047
ELEVATIONS
PORTABLE B

A2.2