

LEGEND:

- SCREENED LINES INDICATE EXISTING ASSEMBLIES/SYSTEMS TO REMAIN AND BE PROTECTED DURING CONSTRUCTION.
- INDICATES ASSEMBLIES/SYSTEMS TO BE CONSTRUCTED
- DOOR NUMBER, RE: A82 DOOR SCHEDULE
- WINDOW TYPE, RE: A82 WINDOW TYPES
- WALL TYPE, RE: A21 FOR WALL TYPES WITH VARIABLE HEIGHT, SEE TOP OF WALL ELEVATION
- SHEET NOTE, RE: SHEET NOTES LIST ON CURRENT PAGE
- INTERIOR ELEVATIONS SEE DWG. #1 @ SHY. 151, 152, 153

GENERAL NOTES:

- A. FINISH FLOOR ELEVATION (100.00) IS FOR REFERENCE ONLY. SEE SEPARATE BOUND CIVIL SET FOR ACTUAL FLOOR ELEVATION.
- B. ALL WALL DIMENSIONS ARE TO FACE OF STUD AND/OR NOMINAL FACE OF MASONRY.
- C. PROVIDE BLOCKING WHERE REQUIRED FOR FIXTURE INSTALLATION. COORDINATE WITH FIXTURE INSTALLER FOR MOUNTING HEIGHTS.
- D. BRACE WALLS THAT DO NOT EXTEND TO STRUCTURE WITH 3/8" METAL STUD DIAGONAL BRACE AT 48" O.C., ANCHOR TO BOTTOM FLUTE OF ROOF DECKING AND AT TOP TRACK OF PARTITION WALL. BRACES TO BE CONCEALED WHENEVER POSSIBLE.
- E. PROVIDE 5/8" GYP. BD. AT EXISTING EXTERIOR STUD FRAMED WALLS, FINISH.
- F. THE HINGE SIDE OF ALL DOOR FRAMES SHALL BE MOUNTED 4" FROM ADJACENT PERPENDICULAR WALL UNLESS NOTED OTHERWISE.
- G. RE: I-SERIES FOR FURNITURE PLANS.
- H. CONTRACTOR SHALL PROVIDE BLOCKING OR BACKING FOR ALL WALL MOUNTED AND RECESSED ACCESSORIES AND EQUIPMENT. ASSURE THAT ALL REQUIRED BACKING IS INSTALLED IN WALLS PRIOR TO INSTALLING DRYWALL. THIS INCLUDES BACKING FOR WALL-MOUNTED DOORSTOPS.
- I. THE HINGE SIDE OF ALL DOOR FRAMES SHALL BE MOUNTED 4" MIN. FROM ADJACENT PERPENDICULAR WALL U.N.O.
- J. SINKS AND FITTING SHOWN WITHIN MILLWORK ARE INDICATED ON PLUMBING PLANS.
- K. CONTRACTOR SHALL FIELD MEASURE ALL AREAS TO RECEIVE MILLWORK PRIOR TO FABRICATION OF MILLWORK.
- L. VERIFY ALL PLUMBING FIXTURES WITH PLUMBING DRAWINGS.

SHEET NOTES:

- 05 70-02 DECORATIVE METAL RAILING, RE: A73_
- 05 70-06 DECORATIVE METAL TRELLIS
- 05 70-08 DECORATIVE METAL FENCE
- 06 20-03 BUILT-IN BENCH SEATING, RE: A71-4
- 06 20-04 RAISED FLOORING, RE: A71-5
- 06 20-05 PARTIAL HEIGHT WALL, RE: A71-2,3,6
- 07 42-11 2 MIN. CLEAR AIR SPACE AT WALK-IN COOLER/FREEZER
- 10 14-02 RESTROOM PANEL SIGN BY CONTRACTOR, RE: A71-10,11
- 10 14-03 DINING ROOM OCCUPANCY SIGN BY CONTRACTOR, RE: A71-12
- 10 14-04 TACTILE EXIT SIGN BY CONTRACTOR, RE: A71-29,30
- 11 12-01 WALK-IN COOLER / FREEZER BY OTHERS, PROVIDE S.S METAL CLOSURE TO ADJACENT WALLS, A71-29,30
- 12 50-00 FURNITURE BY OWNER
- 22 00-80 PLUMBING FIXTURES, RE: AXX.

1 FLOOR PLAN - LEVEL 1
1/4" = 1'-0"

CITY USE ONLY



1 EAST ELEVATION
1/4" = 1'-0"



2 SOUTH ELEVATION
1/4" = 1'-0"


MATERIALS & FINISH SCHEDULE:

X	MATERIAL	#	FINISH/COLOR
A	CENTRIA "STYLE-RIB" METAL PANEL		CENTRIA 857 RUST
B	CENTRIA "ENCONLAP 3/4" METAL PANEL		CENTRIA 861 CRYSTAL ZINC
C	HARE BOARD AND BATTEN SIDING		PAINTED GRAY
D	EIFS PANEL SIDING		INTEGRAL GRAY - GREEN SAND FINISH
E	STANDING SEAM METAL ROOF/SIDING		CENTRIA 854 MEDIUM MAPLE
F	WOOD TRIM		STAINED
G	STOREFRONT		BLACK
H	METAL FASCIA/COPING		BLACK
I	SOFFIT/SIDING		DARK KNOTTY PINE
J	GLAZING		CLEAR
M	GLULAM BEAM		STAINED
L	HOLLOW METAL DOOR		-
K	SPANDREL GLAZING		BLACK

LEGEND:

- SCREENED LINES INDICATE EXISTING ASSEMBLIES/SYSTEMS TO REMAIN AND BE PROTECTED DURING CONSTRUCTION.
- INDICATES ASSEMBLIES/SYSTEMS TO BE CONSTRUCTED
- (05) DOOR NUMBER, RE: A82 DOOR SCHEDULE
- (A) WINDOW TYPE, RE: A82 WINDOW TYPES
- (00 00-01) SHEET NOTE, RE: SHEET NOTES LIST ON CURRENT PAGE

GENERAL NOTES:

- A. PROVIDE MATERIAL SAMPLES FOR OWNER/ARCHITECT'S APPROVAL.
- B. FINISHES ARE ALSO REQUIRED AT PORTIONS OF UNDERSIDE, INSIDE FACE OF PARAPETS, AND SOFFITS EXPOSED TO PUBLIC VIEW.
- C. THE REFERENCE ELEVATION MARKED WITH  REPRESENTS VERTICAL HEIGHTS RELATIVE TO INTERIOR FLOOR DATUM ASSUMED AT 0'-0". CW/ CIVIL FOR ACTUAL FLOOR ELEVATION.
- D. ALL MATERIAL SYMBOLS ARE FOR REPRESENTATION ONLY. CONTRACTOR IS RESPONSIBLE FOR DETERMINING PROPER COURSING, ETC.
- E. LOCATION FOR ADDRESS SIGNAGE TO BE INSTALLED AS REQUIRED AND APPROVED BY THE CITY OF _____.
- F. ALL ROOFTOP EQUIPMENT TO BE SCREENED BY WALLS OR EQUIPMENT SCREENS.
- G. COORDINATE LOCATION OF KNOXBOX WITH FIRE MARSHALL.

SHEET NOTES:

- 05 70-02 DECORATIVE METAL RAILING, RE: A73-
05 70-06 DECORATIVE METAL TRELLIS
11 12-01 WALK-IN COOLER / FREEZER BY OTHERS, PROVIDE S.S METAL CLOSURE TO ADJACENT WALLS, A71-29.30

PRELIMINARY
NOT FOR
CONSTRUCTION

200 BROAD STREET
BOISE, IDAHO 83702
PHONE: 208-345-4635 • FAX: 208-345-4638
WWW.CSHOA.COM

200 BROAD STREET
BOISE, IDAHO 83702
PHONE: 208-345-4635 • FAX: 208-345-4638
WWW.CSHOA.COM

GARDEN CITY, IDAHO

CHINDEN BAR AND DISTILLERY
3100 WEST CHINDEN BLVD.

CSHOA

DESIGN
DEVELOPMENT

PROJECT
22037

DATE
07-14-23

DRAWN
Author

CHECKED
Checker

REVISED

SHEET TITLE

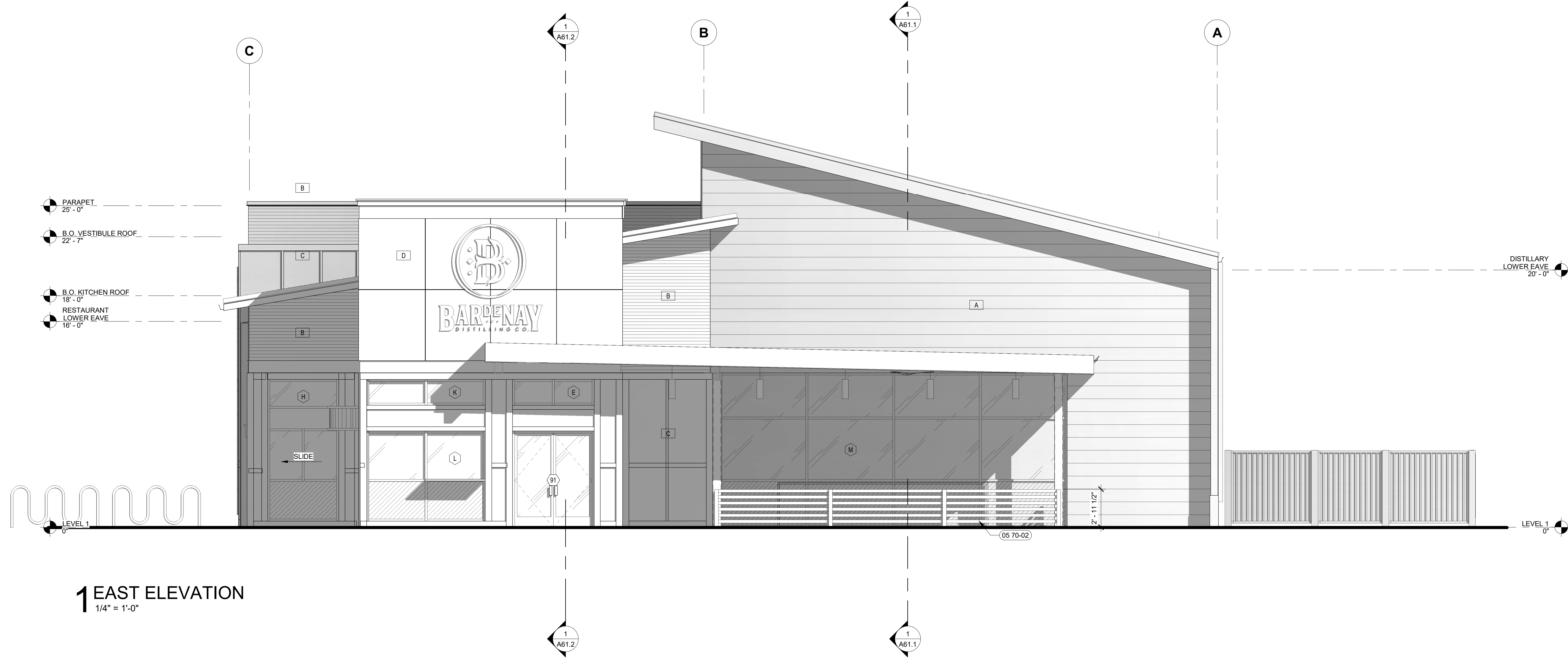
EXTERIOR
ELEVATIONS

SHEET

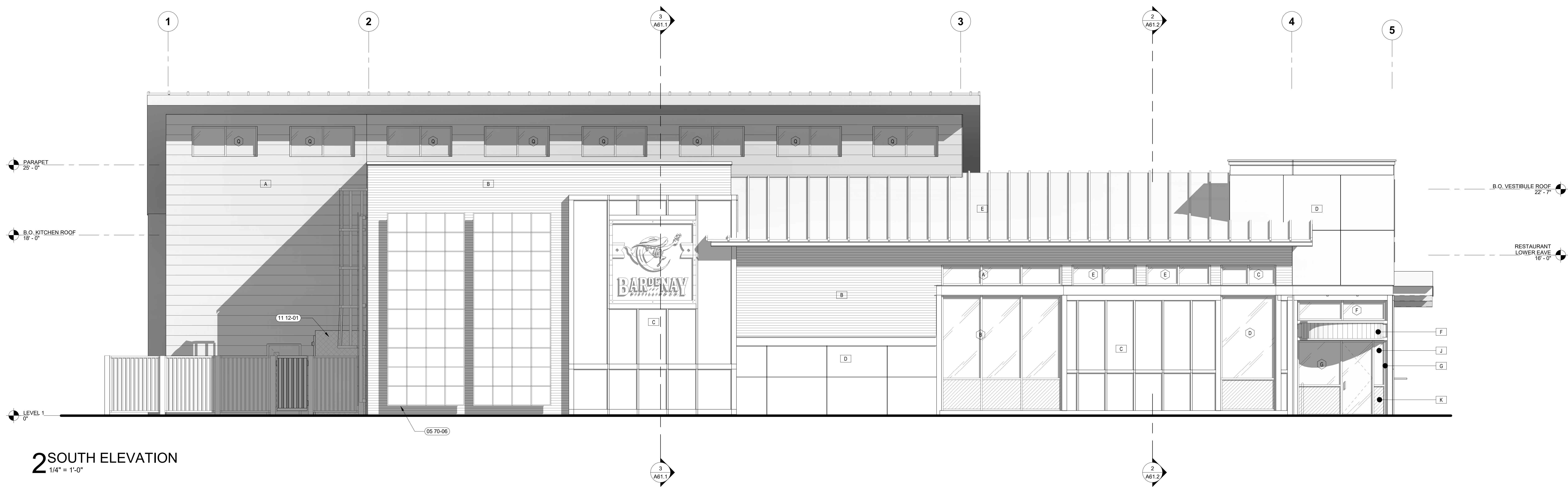
A51

ORIGINAL SHEET SIZE
36" x 48"

CITY USE ONLY



1 EAST ELEVATION
1/4" = 1'-0"



2 SOUTH ELEVATION
1/4" = 1'-0"

MATERIALS & FINISH SCHEDULE:

X	MATERIAL	#	FINISH/COLOR
A	CENTRIA "STYLE-RIB" METAL PANEL	CENTRIA 857 RUST	
B	CENTRIA "ENCONLAP 3/4" METAL PANEL	CENTRIA 861 CRYSTAL ZINC	
C	HARE BOARD AND BATTEN SIDING	PAINTED GRAY	
D	EI'S PANEL SIDING	INTEGRAL GRAY - GREEN SAND FINISH	
E	STANDING SEAM METAL ROOF/SIDING	CENTRIA 854 MEDIUM MAPLE	
F	WOOD TRIM	STAINED	
G	STOREFRONT	BLACK	
H	METAL FASCIA/COPING	BLACK	
I	SOFFIT/SIDING	DARK KNOTTY PINE	
J	GLAZING	CLEAR	
M	GLULAM BEAM	STAINED	
L	HOLLOW METAL DOOR	-	
K	SPANDREL GLAZING	BLACK	

LEGEND:

- SCREENED LINES INDICATE EXISTING ASSEMBLIES/SYSTEMS TO REMAIN AND BE PROTECTED DURING CONSTRUCTION.
- INDICATES ASSEMBLIES/SYSTEMS TO BE CONSTRUCTED.
- (05) DOOR NUMBER, RE: A82 DOOR SCHEDULE
- (A) WINDOW TYPE, RE: A82 WINDOW TYPES
- (00 00-01) SHEET NOTE, RE: SHEET NOTES LIST ON CURRENT PAGE

GENERAL NOTES:

- A. PROVIDE MATERIAL SAMPLES FOR OWNER/ARCHITECT'S APPROVAL.
- B. FINISHES ARE ALSO REQUIRED AT PORTIONS OF UNDERSIDE, INSIDE FACE OF PARAPETS, AND SOFFITS EXPOSED TO PUBLIC VIEW.
- C. THE REFERENCE ELEVATION MARKED WITH  REPRESENTS VERTICAL HEIGHTS RELATIVE TO INTERIOR FLOOR DATUM ASSUMED AT 0'-0". CW/ CIVIL FOR ACTUAL FLOOR ELEVATION.
- D. ALL MATERIAL SYMBOLS ARE FOR REPRESENTATION ONLY. CONTRACTOR IS RESPONSIBLE FOR DETERMINING PROPER COURSING, ETC.
- E. LOCATION FOR ADDRESS SIGNAGE TO BE INSTALLED AS REQUIRED AND APPROVED BY THE CITY OF _____.
- F. ALL ROOFTOP EQUIPMENT TO BE SCREENED BY WALLS OR EQUIPMENT SCREENS.
- G. COORDINATE LOCATION OF KNOXBOX WITH FIRE MARSHALL.

SHEET NOTES:

- 05 70-02 DECORATIVE METAL RAILING, RE: A73-...
- 05 70-06 DECORATIVE METAL TRELLIS
- 11 12-01 WALK-IN COOLER / FREEZER BY OTHERS, PROVIDE S.S METAL CLOSURE TO ADJACENT WALLS, A71-29.30

PRELIMINARY
NOT FOR
CONSTRUCTION

200 BROAD STREET
BOISE, IDAHO 83702
PHONE: 208-343-4635 • FAX: 208-343-8838
WWW.CSHOA.COM

GARDEN CITY, IDAHO

CHINDEN BAR AND DISTILLERY
3100 WEST CHINDEN BLVD.

CSHOA

DESIGN
DEVELOPMENT

PROJECT
22037

DATE
07-14-23

DRAWN
Author

CHECKED
Checker

REVISED

SHEET TITLE

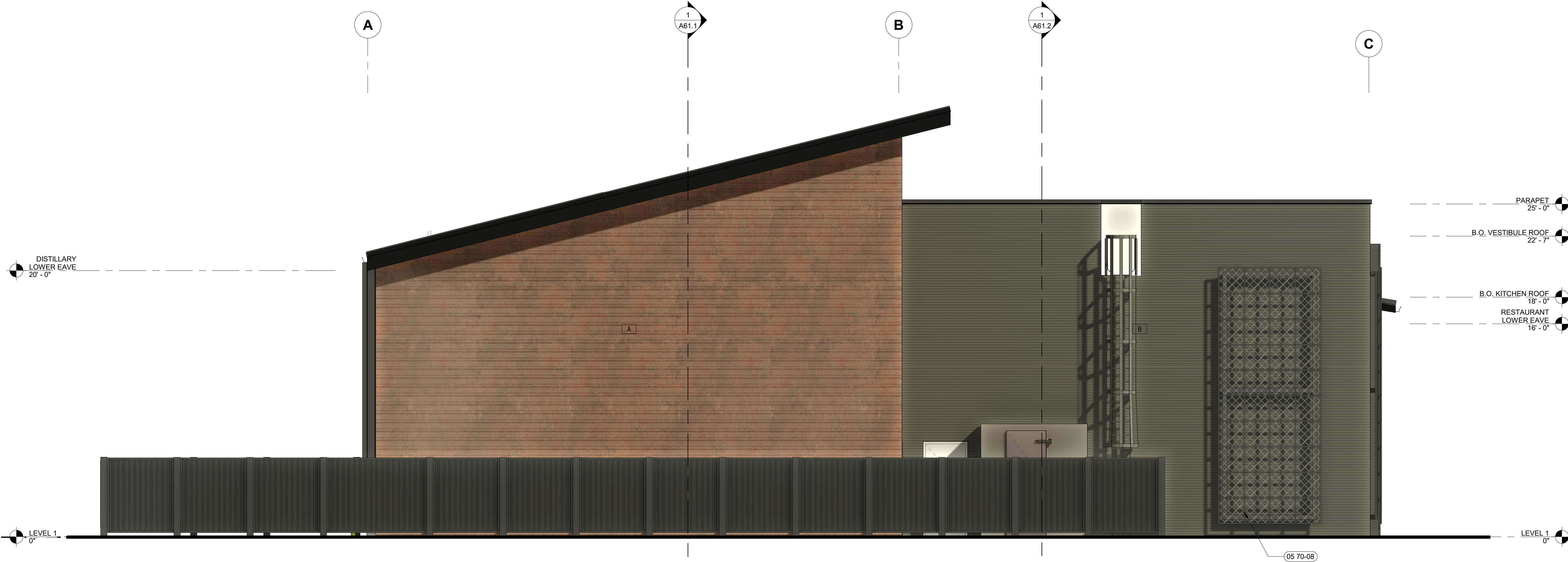
EXTERIOR
ELEVATIONS

SHEET

A51

ORIGINAL SHEET SIZE
36" x 48"

CITY USE ONLY



1 WEST ELEVATION
1/4" = 1'-0"



2 NORTH ELEVATION
1/4" = 1'-0"


MATERIALS & FINISH SCHEDULE:

X	MATERIAL	#	FINISH/COLOR
A	CENTRIA "STYLE-RIB" METAL PANEL	CENTRIA 857 RUST	
B	CENTRIA "ENCONLAP 3/4" METAL PANEL	CENTRIA 861 CRYSTAL ZINC	
C	HARE BOARD AND BATTEN SIDING	PAINTED GRAY	
D	EIFS PANEL SIDING	INTEGRAL GRAY - GREEN SAND FINISH	
E	STANDING SEAM METAL ROOF/SIDING	CENTRIA 854 MEDIUM MAPLE	
F	WOOD TRIM	STAINED	
G	STOREFRONT	BLACK	
H	METAL FASCIA/COPING	BLACK	
I	SOFFIT/SIDING	DARK KNOTTY PINE	
J	GLAZING	CLEAR	
M	GLULAM BEAM	STAINED	
L	HOLLOW METAL DOOR	-	
K	SPANDREL GLAZING	BLACK	

LEGEND:

- SCREENED LINES INDICATE EXISTING ASSEMBLIES/SYSTEMS TO REMAIN AND BE PROTECTED DURING CONSTRUCTION.
- INDICATES ASSEMBLIES/SYSTEMS TO BE CONSTRUCTED
- (101) DOOR NUMBER, RE: A82 DOOR SCHEDULE
- (A) WINDOW TYPE, RE: A82 WINDOW TYPES
- (00 00-01) SHEET NOTE, RE: SHEET NOTES LIST ON CURRENT PAGE

GENERAL NOTES:

- A. PROVIDE MATERIAL SAMPLES FOR OWNER/ARCHITECT'S APPROVAL.
- B. FINISHES ARE ALSO REQUIRED AT PORTIONS OF UNDERSIDE, INSIDE FACE OF PARAPETS, AND SOFFITS EXPOSED TO PUBLIC VIEW.
- C. THE REFERENCE ELEVATION MARKED WITH  REPRESENTS VERTICAL HEIGHTS RELATIVE TO INTERIOR FLOOR DATUM ASSUMED AT 0'-0". CIVIL FOR ACTUAL FLOOR ELEVATION.
- D. ALL MATERIAL SYMBOLS ARE FOR REPRESENTATION ONLY. CONTRACTOR IS RESPONSIBLE FOR DETERMINING PROPER COURSING, ETC.
- E. LOCATION FOR ADDRESS SIGNAGE TO BE INSTALLED AS REQUIRED AND APPROVED BY THE CITY OF _____.
- F. ALL ROOFTOP EQUIPMENT TO BE SCREENED BY WALLS OR EQUIPMENT SCREENS.
- G. COORDINATE LOCATION OF KNOXBOX WITH FIRE MARSHALL.

SHEET NOTES:

- 05 70-08 DECORATIVE METAL TRELLIS
- 05 70-08 DECORATIVE METAL FENCE

PRELIMINARY
NOT FOR
CONSTRUCTION

200 BROAD STREET
BOISE, IDAHO 83702
PHONE: 208-343-4635 • FAX: 208-343-4638
WWW.CSHOA.COM

GARDEN CITY, IDAHO

CHINDEN BAR AND DISTILLERY
3100 WEST CHINDEN BLVD.

CSHOA

DESIGN
DEVELOPMENT

PROJECT
22037

DATE
07-14-23

DRAWN
Author

CHECKED
Checker

REVISED

SHEET TITLE

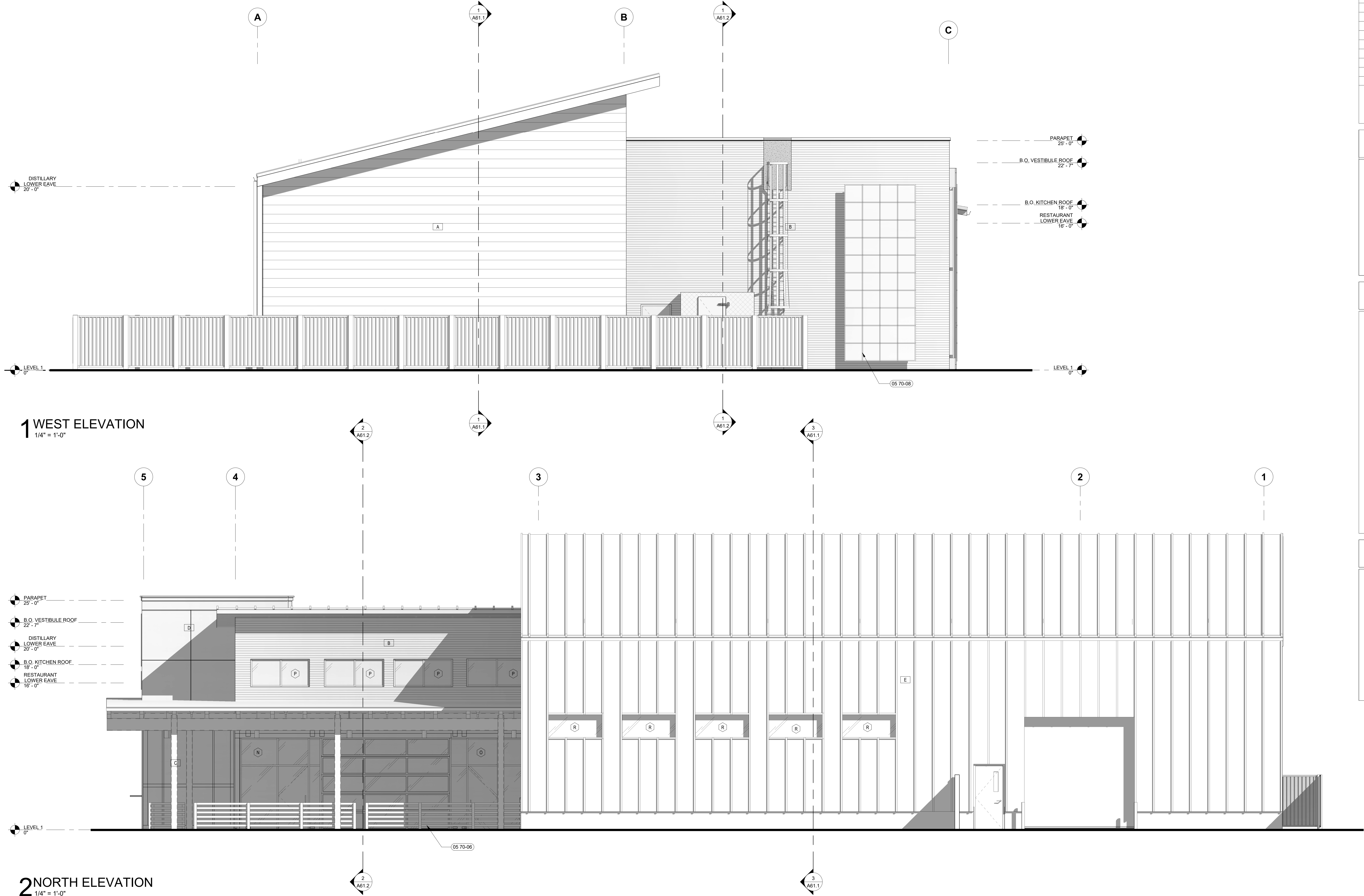
EXTERIOR
ELEVATIONS

SHEET

A52

ORIGINAL SHEET SIZE
36" x 48"

CITY USE ONLY



MATERIALS & FINISH SCHEDULE:

X	MATERIAL	#	FINISH/COLOR
A	CENTRIA "STYLE-RIB" METAL PANEL	CENTRIA 857 RUST	
B	CENTRIA "ENCONLAP 3/4" METAL PANEL	CENTRIA 861 CRYSTAL ZINC	
C	HARE BOARD AND BATTEN SIDING	PAINTED GRAY	
D	EIFS PANEL SIDING	INTEGRAL GRAY - GREEN SAND FINISH	
E	STANDING SEAM METAL ROOF/SIDING	CENTRIA 854 MEDIUM MAPLE	
F	WOOD TRIM	STAINED	
G	STOREFRONT	BLACK	
H	METAL FASCIA/COPING	BLACK	
I	SOFFIT/SIDING	DARK KNOTTY PINE	
J	GLAZING	CLEAR	
M	GLULAM BEAM	STAINED	
L	HOLLOW METAL DOOR	-	
K	SPANDREL GLAZING	BLACK	

LEGEND:

- SCREENED LINES INDICATE EXISTING ASSEMBLIES/SYSTEMS TO REMAIN AND BE PROTECTED DURING CONSTRUCTION.
- INDICATES ASSEMBLIES/SYSTEMS TO BE CONSTRUCTED
- DOOR NUMBER, RE: A82 DOOR SCHEDULE
- WINDOW TYPE, RE: A82 WINDOW TYPES
- SHEET NOTE, RE: SHEET NOTES LIST ON CURRENT PAGE

GENERAL NOTES:

- A. PROVIDE MATERIAL SAMPLES FOR OWNER/ARCHITECT'S APPROVAL.
- B. FINISHES ARE ALSO REQUIRED AT PORTIONS OF UNDERSIDE, INSIDE FACE OF PARAPETS, AND SOFFITS EXPOSED TO PUBLIC VIEW.
- C. THE REFERENCE ELEVATION MARKED WITH REPRESENTS VERTICAL HEIGHTS RELATIVE TO INTERIOR FLOOR DATUM ASSUMED AT 0'-0". CIVIL FOR ACTUAL FLOOR ELEVATION.
- D. ALL MATERIAL SYMBOLS ARE FOR REPRESENTATION ONLY. CONTRACTOR IS RESPONSIBLE FOR DETERMINING PROPER COURSING, ETC.
- E. LOCATION FOR ADDRESS SIGNAGE TO BE INSTALLED AS REQUIRED AND APPROVED BY THE CITY OF _____.
- F. ALL ROOFTOP EQUIPMENT TO BE SCREENED BY WALLS OR EQUIPMENT SCREENS.
- G. COORDINATE LOCATION OF KNOXBOX WITH FIRE MARSHALL.

SHEET NOTES:

- 05 70-08 DECORATIVE METAL TRELLIS
- 05 70-08 DECORATIVE METAL FENCE

PRELIMINARY
NOT FOR
CONSTRUCTION

200 BROAD STREET
BOISE, IDAHO 83702
PHONE: 208-343-4635 • FAX: 208-343-4638
WWW.CSHOA.COM

THESE DRAWINGS AND SPECIFICATIONS ARE THE PROPERTY OF THE ARCHITECT. NO PART OF THESE DRAWINGS OR SPECIFICATIONS MAY BE REPRODUCED OR TRANSMITTED IN ANY FORM OR BY ANY MEANS, ELECTRONIC OR MECHANICAL, WITHOUT THE WRITTEN PERMISSION OF THE ARCHITECT.

200 BROAD STREET
BOISE, ID 83702
PHONE: 208-343-4635 • FAX: 208-343-4638
WWW.CSHOA.COM

(208) 343-4635
http://www.cshoa.com

GARDEN CITY, IDAHO

CHINDEN BAR AND DISTILLERY
3100 WEST CHINDEN BLVD.

CSHOA

DESIGN
DEVELOPMENT

PROJECT
22037

DATE
07-14-23

DRAWN
Author

CHECKED
Checker

REVISED

SHEET TITLE

EXTERIOR
ELEVATIONS

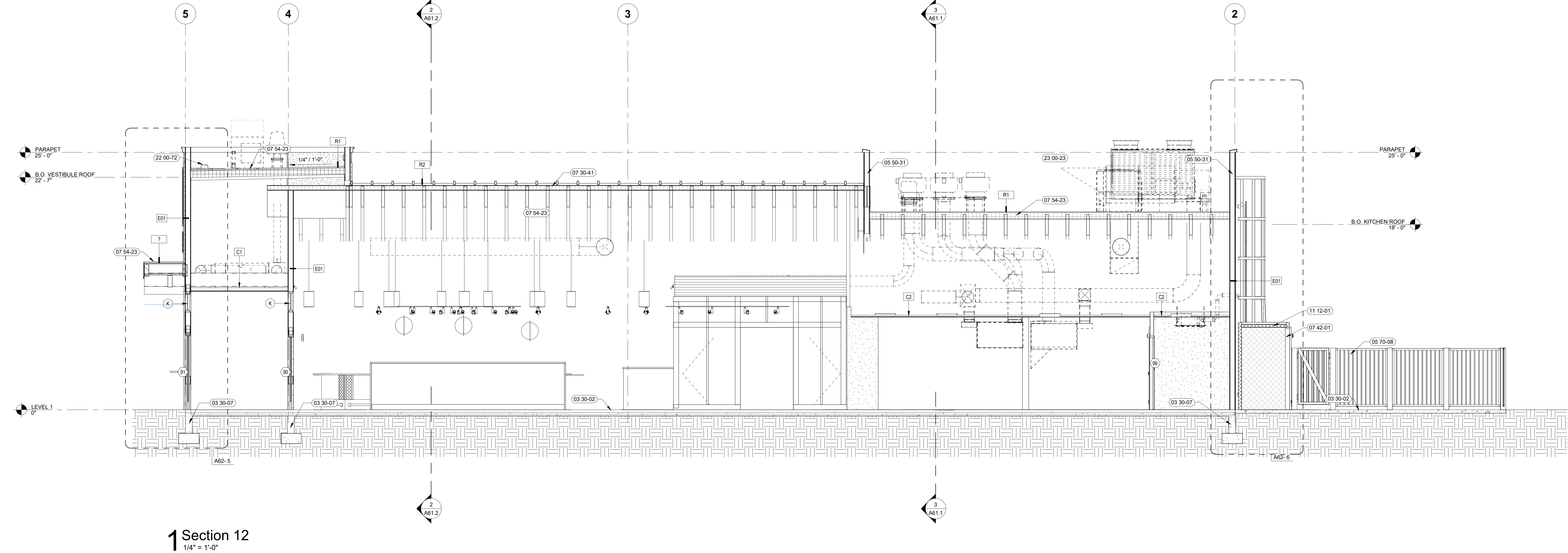
SHEET

A52

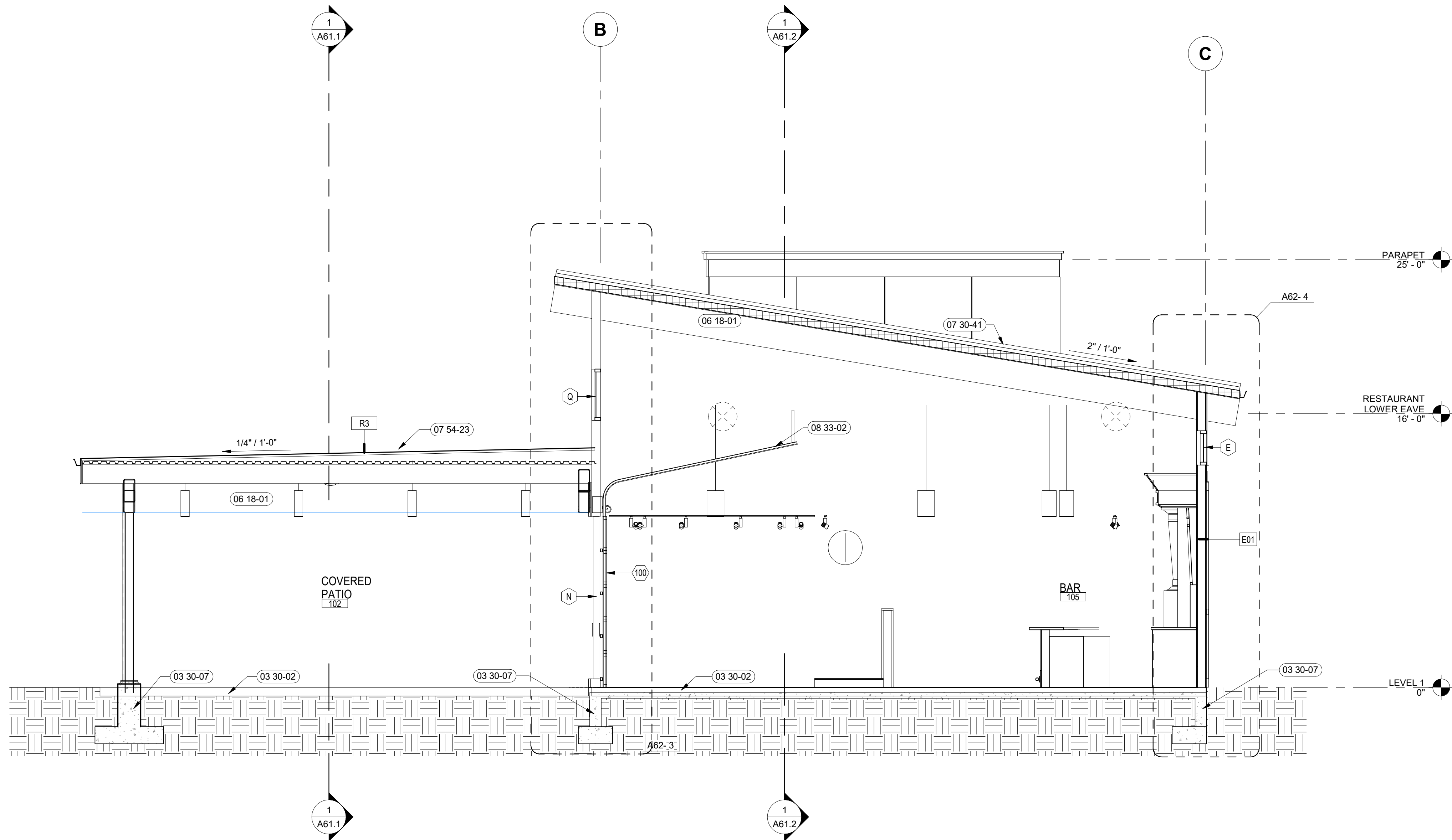
ORIGINAL SHEET SIZE
36" x 48"

CITY USE ONLY

7/26/2023 2:23:21 PM



1 Section 12
1/4" = 1'-0"



2 Section 14
1/4" = 1'-0"

##

SHEET NOTES:

03 30-02 CONCRETE SLAB ON GRADE W/ CONTROL JOINTS, RE: FINISH
03 30-07 CONCRETE FOUNDATION AND/OR FOOTING, RE: STRUCTURAL
05 50-31 EQUIPMENT SCREEN WALL, C/W STRUCTURAL DRAWINGS.
05 70-06 DECORATIVE METAL FENCE
07 30-41 STANDING-SEAM METAL ROOF PANELS OVER RIGID INSULATION
07 42-01 COOLER/FREEZER BOX AND DOOR PROVIDED BY OWNER INSTALLED BY CONTRACTOR
07 54-23 THERMOPLASTIC POLYOLEFIN (TPO) ROOFING
08 33-02 OVERHEAD COILING DOOR
11 12-01 WALK-IN COOLER/ FREEZER BY OTHERS, PROVIDE S.S METAL CLOSURE TO ADJACENT WALLS, A71-29.30
22 00-72 ROOF DRAIN & OVERFLOW, C/W PLUMBING DRAWINGS

PRELIMINARY
NOT FOR
CONSTRUCTION

200 BROAD STREET
BOISE, IDAHO 83702
PHONE: (208) 343-4635 • FAX: 208-343-4638
WWW.CSHOA.COM
THIS DRAWING AND SPECIFICATIONS ARE THE PROPERTY OF THE ARCHITECT. NO PART OF THIS DRAWING OR SPECIFICATIONS MAY BE REPRODUCED OR TRANSMITTED IN ANY FORM OR BY ANY MEANS, ELECTRONIC OR MECHANICAL, INCLUDING PHOTOCOPYING, RECORDING, OR BY ANY INFORMATION STORAGE AND RETRIEVAL SYSTEM, WITHOUT THE WRITTEN PERMISSION OF THE ARCHITECT.
COURTESY OF CSHOA

GARDEN CITY, IDAHO

CHINDEN BAR AND DISTILLERY
3100 WEST CHINDEN BLVD.

CSHOA

DESIGN DEVELOPMENT

PROJECT	DATE
22037	07-14-23
DRAWN	CHECKED
Author	Checker

REVISED

SHEET TITLE

BUILDING
SECTIONS

SHEET

A61.2

ORIGINAL SHEET SIZE
36" x 48"

CITY USE ONLY

LIGHTING FIXTURE SCHEDULE							
<div>CONTRACTOR MAY PROVIDE FIXTURES EQUAL TO THOSE SPECIFIED. SUBSTITUTED FIXTURES MUST MATCH SPECIFIED FIXTURE IN PERFORMANCE (LUMENS AND WATTAGE), APPEARANCE, SIZE AND QUALITY.</div> <div>ALL FIXTURES SHALL BE SUBJECT TO REVIEW BY ENGINEER AT TIME OF LIGHTING FIXTURE SUBMITTAL. CONTRACTOR SHALL PROVIDE FIXTURES INDICATED ON SCHEDULE FOR ANY FIXTURES DEEMED NOT EQUAL BY ENGINEER.</div> <div>A. VERIFY MATERIALS AND FINISHES WITH OWNER PRIOR TO ORDERING. VERIFY MOUNTING HEIGHTS WITH FINISHED DECK, JOIST HEIGHTS, CEILING HEIGHTS PRIOR TO ORDERING AND ALLOW 2 WEEKS FOR DIRECTION.</div> <div>B. LIGHTING REPRESENTATIVE TO CONFIRM VERIFY ALL ACCESSORIES TO ENSURE THE CONTRACTOR HAS COMPLETE LIGHTING SYSTEMS.</div> <div>C. DOWN LIGHTS IN CEILING SOFFITS SHALL HAVE MOUNTING FRAMES WITH A LOWER HOUSING RING OR PROVISIONS TO ACCOMMODATE CEILINGS.</div> <div>D. COORDINATE LIGHT FIXTURES IN SOFFIT WITH FINISHING CONTRACTOR.</div> <div>E. LIGHTING REPRESENTATIVE AND ELECTRICAL CONTRACTOR TO VERIFY DIMMING SYSTEM, OCCUPANCY AND DAYLIGHT SENSOR COMPATIBILITY WITH LIGHT FIXTURE.</div>							
FIXTURE	DESCRIPTION	MANUFACTURER	PART NUMBER	ELECTRICAL DATA	COLOR TEMP.	LUMENS	MOUNTING
ZR1	2x2 FLAT PANEL	COLUMBIA LIGHTING	SRP22-30LW-G-EDJ	120 V/1-23 VA	3000K	3000	RECESSED
ZR1E	2X2 EMERGENCY FLAT PANEL	COLUMBIA LIGHTING	SRP22-30LW-G-EDU BATTERY	120 V/1-23 VA	3000K	3000	RECESSED
EM1	EMERGENCY BUG EYE		TBD	120 V/1-6 VA	DO NOT USE		WALL MOUNT
EX1	EXIT SIGN		TBD	120 V/1-1 VA	DO NOT USE		CEILING/WALL MOUNT
LP1	8' SUSPENDED LINEAR	UNO	UNOS1 OC BFA SPF48 1500 B3 30K9 UNV DM BLK	120 V/1-124 VA	3000K		SUSPENDED
LP1E	8' SUSPENDED LINEAR	UNO	UNOS1 OC BFA SPF48 1500 B3 30K9 UNV DM BLK BATTERY BACK UP	120 V/1-124 VA	3000K		SUSPENDED
P1	PENDANT	DELRAY	P1-K-W-W30-D	120 V/1-28 VA	3000K		SUSPENDED
P2	PENDANT		TBD	120 V/1-28 VA	3000K		SUSPENDED
PC1	EXTERIOR CYLINDER	PRESCOLITE	LTC-3RD-CMBLRMD-10L2230TD9WD-DMTW-VSBLBT-BL	120 V/1-18 VA	3000K		SUSPENDED
PL1	20' POLE LIGHT	KIM LIGHTING	ALT1-28W-85-3K9-3-UNV-BLT-NXWS16F-B2	120 V/1-165 VA	3000K	10000	POLE MOUNT
PL2	20' POLE LIGHT	KIM LIGHTING	ALT1-28W-85-3K9-3-UNV-BLT-NXWS16F	120 V/1-165 VA	3000K	10000	POLE MOUNT
RR1	6" RECESSED ROUND	PRESCOLITE	LTR-6RD-RFH-HL2SL-DMTWF-L-TR-6RW-T-HL2230TD9W	120 V/1-36 VA	3000K		RECESSED
RR1E	6" RECESSED ROUND EMERGENCY	PRESCOLITE	LTR-6RD-RFH-HL2SL-DMTWF-L-TR-6RW-T-HL2230TD9W W BATTERY BACKUP	120 V/1-36 VA	3000K		RECESSED
T1	TRACK LIGHT	BRUCK	250450-SV-13LM-30K-90-DA60-DIM10Z-SMT-8K FURNISH WITH CURRENT LIMITER		3000K		SUSPENDED
TL1	18" 5' TAPELIGHT	VIENNA	V-L90IP68CT30-180"	120 V/1-42 VA	3000K		SURFACE
TL2	3' TAPELIGHT	VIENNA	V-L90IP68CT30-3'	120 V/1-10 VA	3000K		SURFACE
TL3	17" 5' TAPELIGHT	VIENNA	V-L90IP68CT30-178"	120 V/1-58 VA	3000K		SURFACE
WP1	WET LISTED SCOFFCE	ULTRALIGHTS	LUZ-AZUL-8601-18-BA-02	120 V/1-6 VA	3000K	1181	WALL MOUNT
WP2	WET LISTED SCOFFCE	ULTRALIGHTS	BAS/CS 17387 BA 02	120 V/1-17 VA	3000K	2362	WALL MOUNT
WP3	WET LISTED SCOFFCE	ARCHITECTURAL AREA LIGHTING	RN-D-2-10-3K9-AS-UNV-BLT-W	120 V/1-66 VA	3000K	2000	WALL MOUNT

LIGHTING CONTROL SCHEDULE									
ROOM NUMBER	AREA DESCRIPTION	CONTROL TYPE				PROGRAMMING			
		MANUAL ON/OFF SWITCH	MANUAL DIMMER/ON/OFF SWITCH	OCCUPANCY SENSOR	TIMED CONTROL	BUSINESS HOURS		AFTER-BUSINESS HOURS	
						ON	AUTO OFF	ON	AUTO OFF

DESIGN
DEVELOPMENT

PROJECT 22037	DATE 07-14-23
DRAWN LLM	CHECKED HLG

REVISED

SHEET TITLE
LIGHTING
SCHEDULE

PRELIMINARY
NOT FOR
CONSTRUCTION

JAMON L. BRUNSON, P.E.
200 BROAD STREET
SUITE 200
BOISE, IDAHO 83702
PHONE: (208) 345-4635 • FAX: (208) 345-4638
WWW.CSHOA.COM

CHINDEN BAR AND DISTILLERY
3100 WEST CHINDEN BLVD.
BOISE, ID 83702
PROJECT NO. 22037
DATE: 07-14-23
DRAWN BY: LLM
CHECKED BY: HLG
REVISIONS: 01

CHINDEN BAR AND DISTILLERY
3100 WEST CHINDEN BLVD.
CSHOA

DESIGN
DEVELOPMENT

PROJECT	22037	DATE	07-14-23
DRAWN	LLM	CHECKED	HLG

REVISED

SHEET TITLE
SITE
ELECTRICAL
PLAN

SHEET

ES10

ORIGINAL SHEET SIZE
36" x 48"

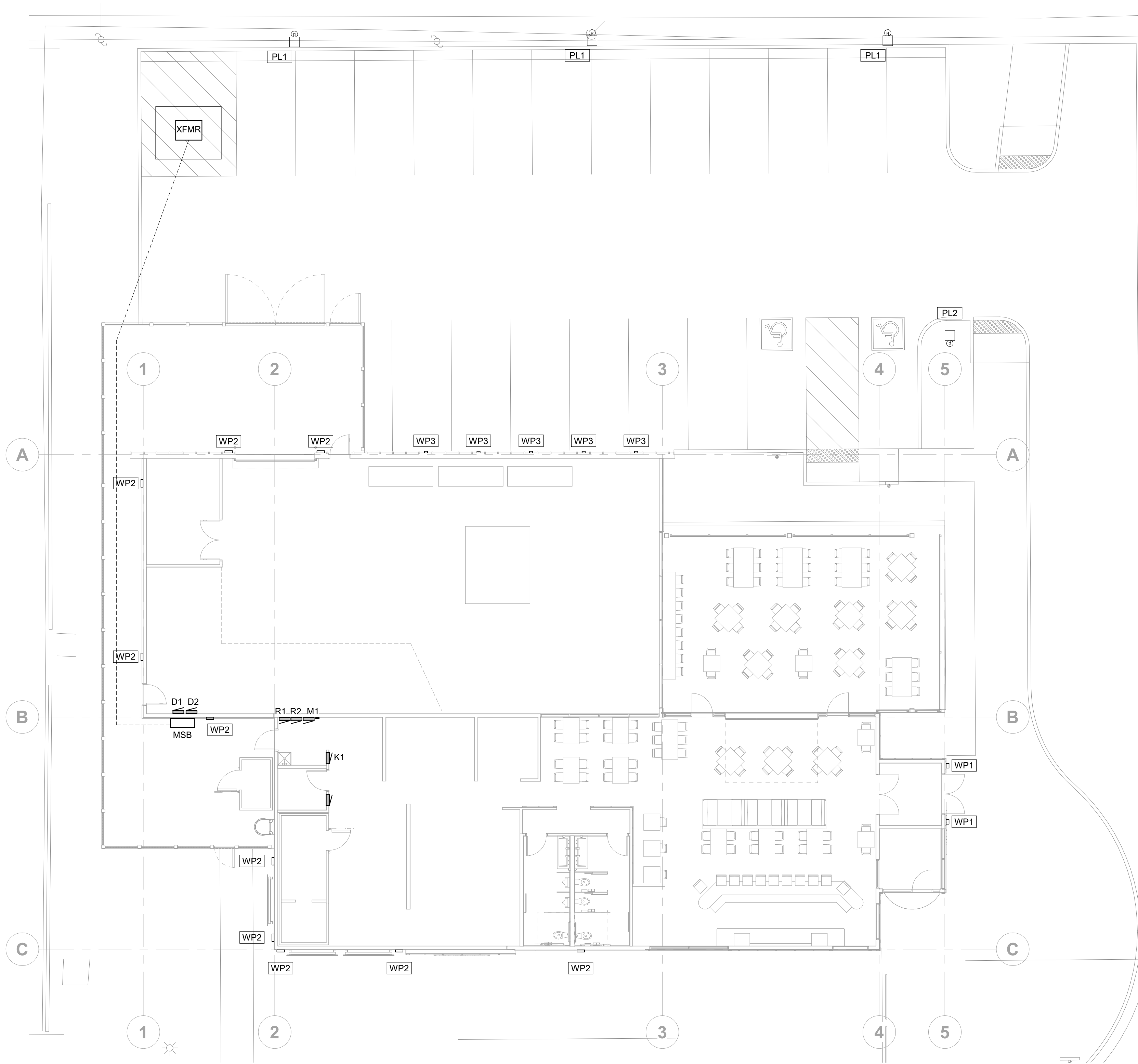
GENERAL NOTES:

- REFER TO SHEET E02 FOR LIGHT FIXTURE SCHEDULE AND SHEET E00 FOR DEVICE AND SYMBOL SCHEDULE.
- ALL CONDUITS WITH CIRCUIT CONDUCTORS SHALL HAVE A COPPER EQUIPMENT GROUNDING CONDUCTOR SIZED IN ACCORDANCE WITH N.E.C. 250.
- MOUNTING METHODS INDICATED AND REFERRED TO ARE MINIMUM CODE REQUIREMENTS. COMPLY WITH LOCAL CODES FOR ADDITIONAL SEISMIC RESTRAINTS.
- ALL LIGHTING CIRCUITS HOMERUNS ARE TO BE 3/4" CONDUIT MINIMUM WITH BRANCH CIRCUIT #10 AND GROUNDING CONDUCTOR #12 UNLESS OTHERWISE NOTED.
- ALL EMERGENCY UNITS AND EXIT LIGHTS SHALL BE CONNECTED FOR CONTINUOUS OPERATION. CONNECT TO UNSWITCHED LIGHTING CIRCUIT.
- COORDINATE HOMERUN CIRCUIT NUMBERS WITH PANEL SCHEDULES. RE: SHEET E01-E04.
- FURNISH AND INSTALL JUNCTION BOXES, AND CONDUITS STUBBED TO ROOF STRUCTURE FOR CONTROL WIRING.
- LEAVE PROTECTIVE COVER ON LIGHTS UNTIL TURNOVER TO PROTECT AGAINST DUST.

SHEET NOTES:

(# #) (# #)

CITY USE ONLY



1 SITE ELECTRICAL PLAN
1" = 10'-0"