

PROPERTY NOTES:

- LEGAL DESCRIPTION:**
- LOTS 1-7 BLOCK 30 AND LOTS 31-34 BLOCK 35 FAIRVIEW ACRES SUBDIVISION NO. 5 LOCATED IN THE SE 1/4 SECTION 5 TOWNSHIP 3 NORTH, RANGE 2 EAST, BOISE MERIDIAN CITY OF GARDEN CITY, ADA COUNTY, IDAHO.
- BUILDING INFORMATION:**
- BUILDING AT ITS HIGHEST POINT WILL BE +/- 78' TALL.
 - GROUND LEVEL: 4,000 SQ. FT., 14' HEIGHT
 - 2ND LEVEL: 5,126 SQ. FT., 14' HEIGHT
 - 3RD LEVEL: 2,600 SQ. FT., 10' HEIGHT
 - 4TH LEVEL: 2,600 SQ. FT., 10' HEIGHT
 - 5TH LEVEL: 2,600 SQ. FT., 10' HEIGHT
 - 6TH LEVEL: 2,600 SQ. FT., 10' HEIGHT
 - 7TH LEVEL (ROOF DECK): 500 SQ. FT., 10' HEIGHT
 - TOTAL: 20,026 SQ. FT., 78' HEIGHT**

STACK ROCK GROUP
 LANDSCAPE ARCHITECTURE & MASTER PLANNING
 (208) 345-0500
 404 S 8th St. #154
 Boise, ID 83702
 StackRockGroup.com
 WILLET C HOWARD, PLA
 OFFICE: (208) 345.0500 EMAIL: WILLET@STACKROCKGROUP.COM
 WWW.STACKROCKGROUP.COM

THE GRAPHICS AND DESIGNS ON THIS SHEET ARE DELIVERABLES THAT REMAIN AT ALL TIMES PROPERTY OF STACK ROCK GROUP, INC.

REPRODUCTION OR REUSE OF THIS PRODUCT CONTAINED HERE IN IS PROHIBITED WITHOUT THE WRITTEN CONSENT OF STACK ROCK GROUP, INC.

©2021 STACK ROCK GROUP, INC.

PRELIMINARY

NOT FOR CONSTRUCTION

CASINO BEACH SUBDIVISION

GARDEN CITY, ID

REVISIONS

MRK	DATE	Description
△	**	**

JOB NO: 21-1901
 DATE: 01.25.2023
 DRAWN BY: DW/MW
 CHECKED BY: WH

DRAWING TITLE

LANDSCAPE SITE PLAN

SHEET NUMBER

L301

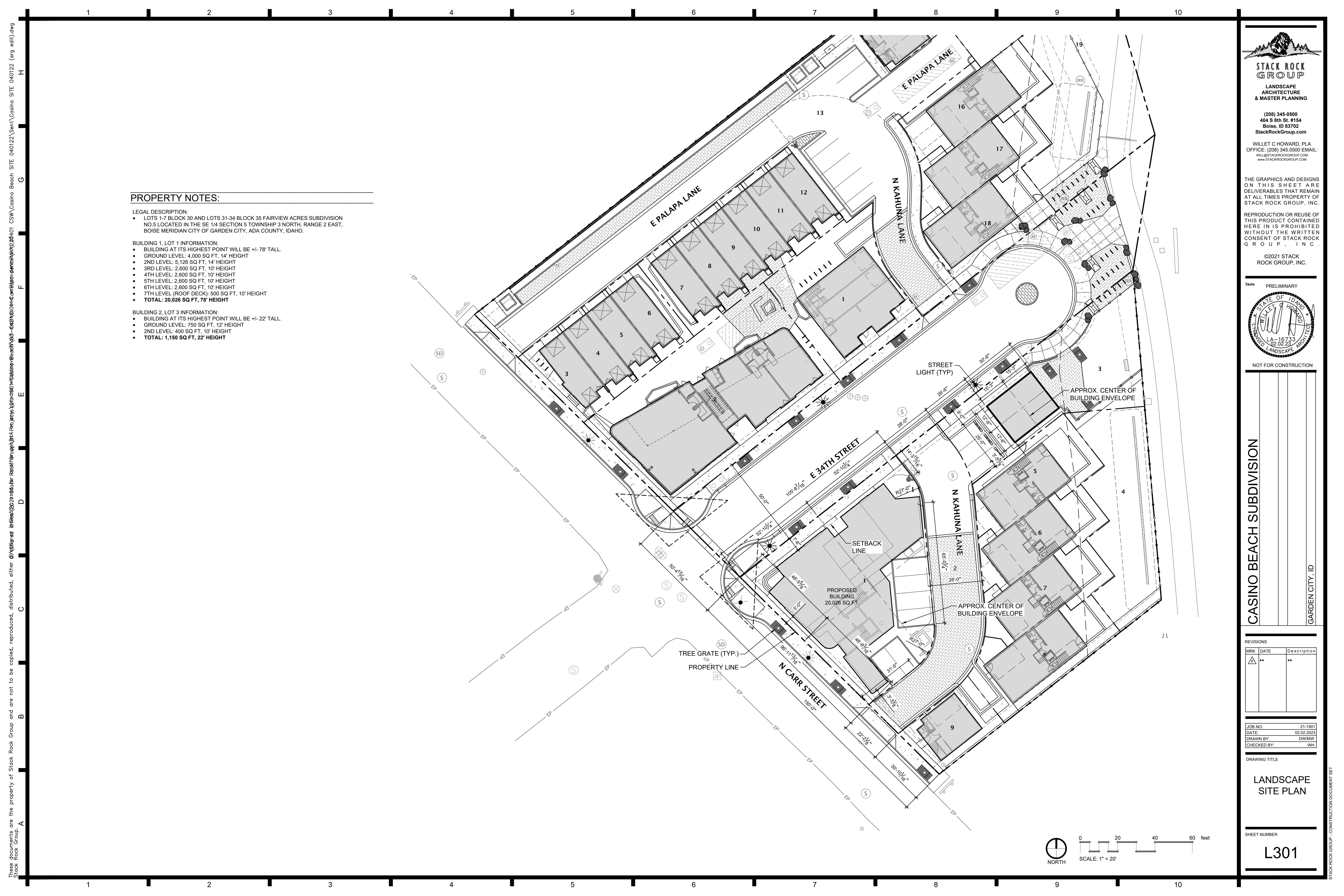
These documents are the property of Stack Rock Group and are not to be copied, reproduced, distributed, either directly or indirectly, used for any purpose other than that for which they were prepared, without the written consent of Stack Rock Group.

STACK ROCK GROUP - CONSTRUCTION DOCUMENT SET



1000475





PROPERTY NOTES:

LEGAL DESCRIPTION:
 • LOTS 1-7 BLOCK 30 AND LOTS 31-34 BLOCK 35 FAIRVIEW ACRES SUBDIVISION NO. 5 LOCATED IN THE SE 1/4 SECTION 5 TOWNSHIP 3 NORTH, RANGE 2 EAST, BOISE MERIDIAN CITY OF GARDEN CITY, ADA COUNTY, IDAHO.

BUILDING 1, LOT 1 INFORMATION:
 • BUILDING AT ITS HIGHEST POINT WILL BE +/- 78' TALL.
 • GROUND LEVEL: 4,000 SQ FT, 14' HEIGHT
 • 2ND LEVEL: 5,126 SQ FT, 14' HEIGHT
 • 3RD LEVEL: 2,600 SQ FT, 10' HEIGHT
 • 4TH LEVEL: 2,600 SQ FT, 10' HEIGHT
 • 5TH LEVEL: 2,600 SQ FT, 10' HEIGHT
 • 6TH LEVEL: 2,600 SQ FT, 10' HEIGHT
 • 7TH LEVEL (ROOF DECK): 500 SQ FT, 10' HEIGHT
 • **TOTAL: 20,026 SQ FT, 78' HEIGHT**

BUILDING 2, LOT 3 INFORMATION:
 • BUILDING AT ITS HIGHEST POINT WILL BE +/- 22' TALL.
 • GROUND LEVEL: 750 SQ FT, 12' HEIGHT
 • 2ND LEVEL: 400 SQ FT, 10' HEIGHT
 • **TOTAL: 1,150 SQ FT, 22' HEIGHT**

STACK ROCK GROUP
 LANDSCAPE ARCHITECTURE & MASTER PLANNING
 (208) 345-0500
 404 S 8th St. #154
 Boise, ID 83702
 StackRockGroup.com
 WILLET C HOWARD, PLA
 OFFICE: (208) 345.0500 EMAIL: WILLET@STACKROCKGROUP.COM
 WWW.STACKROCKGROUP.COM

THE GRAPHICS AND DESIGNS ON THIS SHEET ARE DELIVERABLES THAT REMAIN AT ALL TIMES PROPERTY OF STACK ROCK GROUP, INC.

REPRODUCTION OR REUSE OF THIS PRODUCT CONTAINED HERE IN IS PROHIBITED WITHOUT THE WRITTEN CONSENT OF STACK ROCK GROUP, INC.

©2021 STACK ROCK GROUP, INC.

Seals PRELIMINARY

NOT FOR CONSTRUCTION

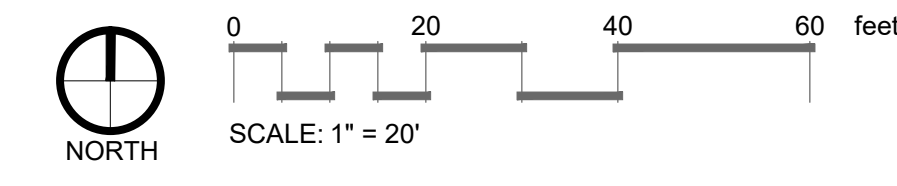
CASINO BEACH SUBDIVISION
 GARDEN CITY, ID

REVISIONS

MRK	DATE	Description
△	**	**

JOB NO: 21-1901
 DATE: 02.02.2023
 DRAWN BY: DW/MW
 CHECKED BY: WH

DRAWING TITLE
LANDSCAPE SITE PLAN
 SHEET NUMBER
L301



These documents are the property of Stack Rock Group and are not to be copied, reproduced, distributed, either digitally or in any other form, without the prior written consent of Stack Rock Group.

STACK ROCK GROUP - CONSTRUCTION DOCUMENT SET