



 **OPEN SPACE**  
SCALE: 1" = 20'-0"

OPEN SPACE	SQ. FEET	PERCENTAGE
LANDSCAPE OPEN SPACE	14,726.5 S.F.	24.51%
REQUIRED QUALIFIED OPEN SPACE	6,008 S.F.	10%
QUALIFIED OPEN SPACE PROVIDED	6,400 S.F.	10.6%
TOTAL AREA	60,073.5 S.F. 1.38 ACRES	100.00 %

REVISIONS
COPYRIGHT © BY THE LAND ARCHITECT LLC

COPYRIGHT DATE 03/15/23
DRAWN BY AW
PROJECT # TLA22-09



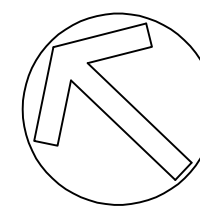
THE LAND ARCHITECT  
PROPERTY DEVELOPMENT

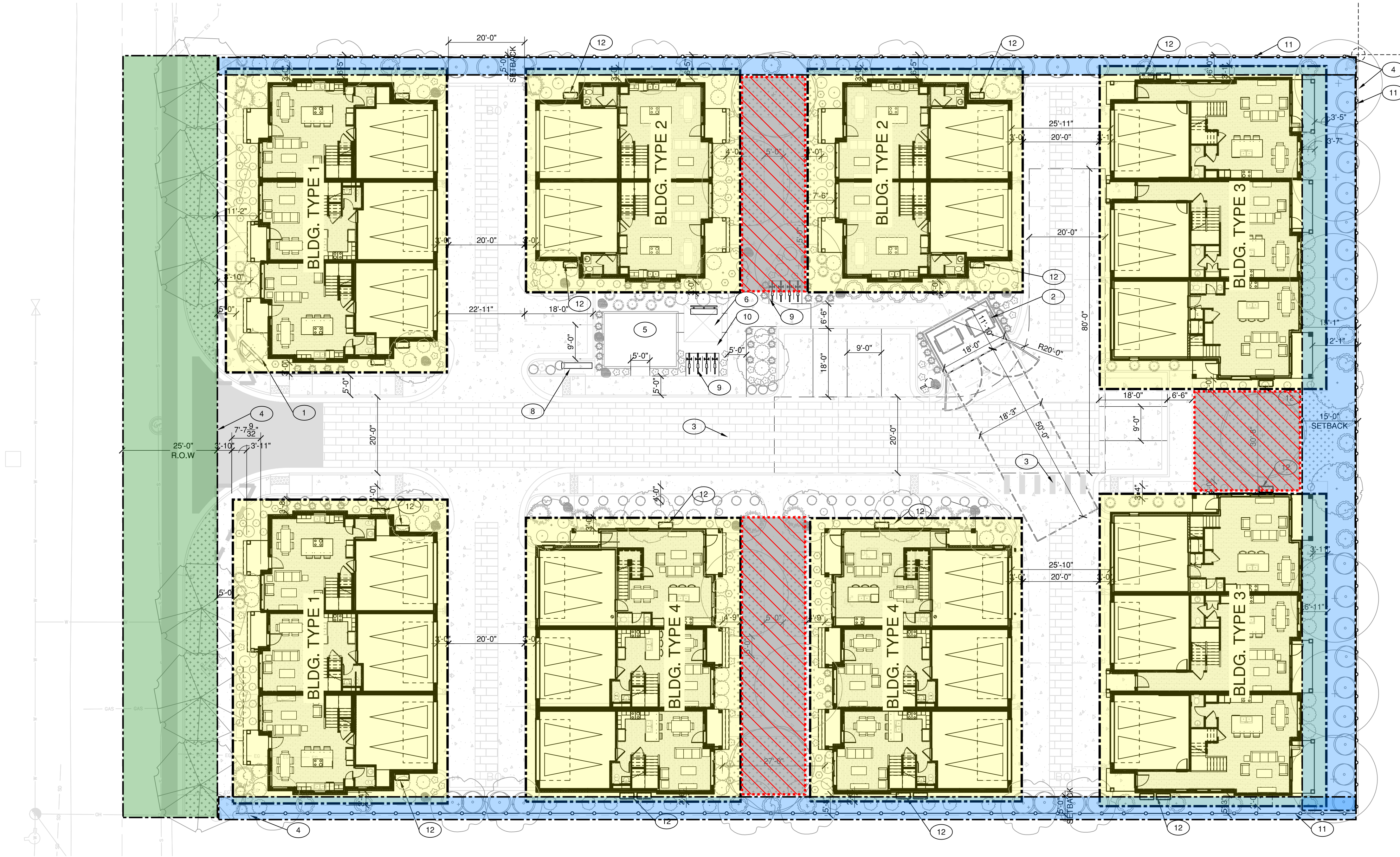
THE LAND ARCHITECT LLC  
141 N. PALMETTO #1731  
EAGLE, ID 83616  
(208) 890-8669

PROJECT  
**MOD COURT APARTMENTS**  
207 E. 45TH ST.  
GARDEN CITY, ID

**A1.2**



 **SITE PLAN**  
SCALE: 1" = 20'-0"



REVISIONS	
COPYRIGHT © BY THE LAND ARCHITECT LLC	
COPYRIGHT DATE	03/15/23
DRAWN BY	AW
PROJECT #	TLA22-09

THE LAND ARCHITECT  
PROPERTY DEVELOPMENT



THE LAND ARCHITECT LLC  
141 N. PALMETTO #1731  
EAGLE, ID 83616  
(208) 890-8669

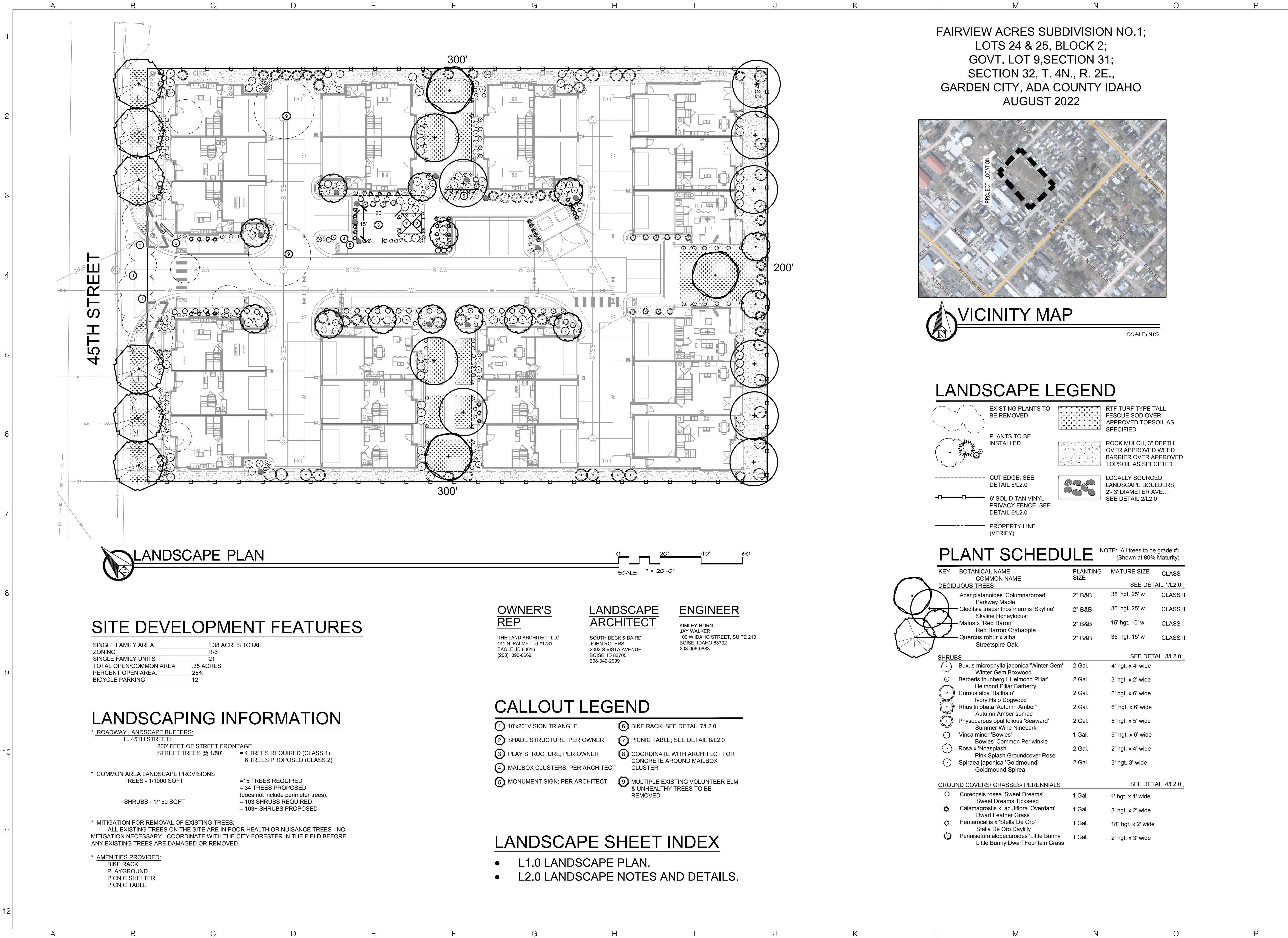
**MOD COURT APARTMENTS**

207 E. 45TH ST.  
GARDEN CITY, ID

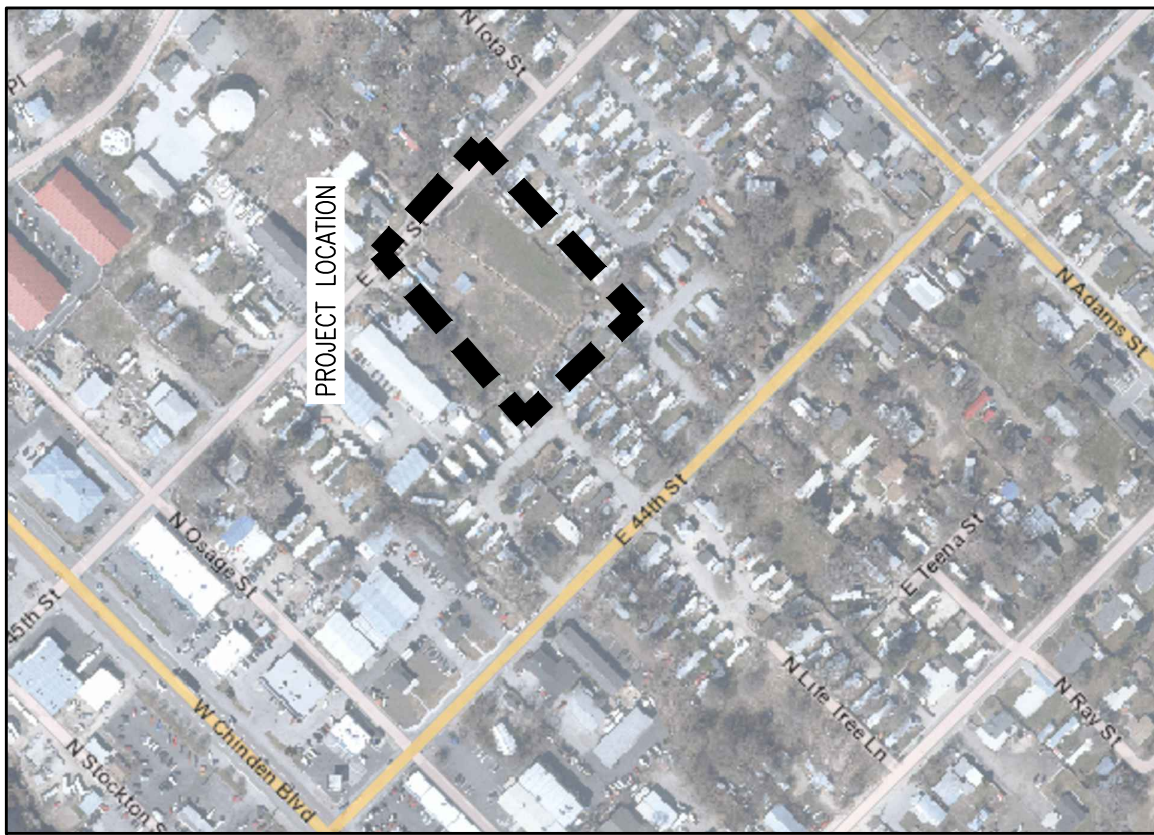
ENTITLEMENT APPLICATION

**A1.1**





FAIRVIEW ACRES SUBDIVISION NO.1;  
LOTS 24 & 25, BLOCK 2;  
GOVT. LOT 9,SECTION 31;  
SECTION 32, T. 4N., R. 2E.,  
GARDEN CITY, ADA COUNTY IDAHO  
AUGUST 2022



### VICINITY MAP

SCALE: NTS

### LANDSCAPE LEGEND

- EXISTING PLANTS TO BE REMOVED
- PLANTS TO BE INSTALLED
- CUT EDGE, SEE DETAIL 5/L2.0
- 6" SOLID TAN VINYL PRIVACY FENCE, SEE DETAIL 6/L2.0
- PROPERTY LINE (VERIFY)
- RTF TURF TYPE TALL FESCUE SOO OVER APPROVED TOPSOIL AS SPECIFIED
- ROCK MULCH, 3" DEPTH, OVER APPROVED WEED BARRIER OVER APPROVED TOPSOIL AS SPECIFIED
- LOCALLY SOURCED LANDSCAPE BOULDERS; 2'-3' DIAMETER AVE., SEE DETAIL 2/L2.0

### PLANT SCHEDULE

NOTE: All trees to be grade #1 (Shown at 80% Maturity)

KEY	BOTANICAL NAME COMMON NAME	PLANTING SIZE	MATURE SIZE	CLASS
DECIDUOUS TREES				
SEE DETAIL 1/L2.0				
○	Acer platanoides 'Columnarbroad'	2" B&B	35' hgt. 25' w	CLASS II
○	Parkway Maple	2" B&B	35' hgt. 25' w	CLASS II
○	Gleditsia triacanthos inermis 'Skyline'	2" B&B	15' hgt. 10' w	CLASS I
○	Malus x 'Red Baron'	2" B&B	35' hgt. 15' w	CLASS II
○	Red Barron Crabapple	2" B&B	35' hgt. 15' w	CLASS II
○	Quercus robur x alba	2" B&B	35' hgt. 15' w	CLASS II
○	Streetspire Oak	2" B&B	35' hgt. 15' w	CLASS II
SHRUBS				
SEE DETAIL 3/L2.0				
○	Buxus microphylla japonica 'Winter Gem'	2 Gal.	4' hgt. x 4' wide	
○	Winter Gem Boxwood	2 Gal.	3' hgt. x 2' wide	
○	Berberis thunbergii 'Helmond Pillar'	2 Gal.	3' hgt. x 2' wide	
○	Helmond Pillar Barberry	2 Gal.	6' hgt. x 6' wide	
○	Cornus alba 'Bailhalo'	2 Gal.	6' hgt. x 6' wide	
○	Ivory Halo Dogwood	2 Gal.	6' hgt. x 6' wide	
○	Rhus trilobata 'Autumn Amber'	2 Gal.	5' hgt. x 5' wide	
○	Autumn Amber sumac	2 Gal.	5' hgt. x 5' wide	
○	Physocarpus opulifoliosus 'Seaward'	2 Gal.	6' hgt. x 6' wide	
○	Summer Wine Ninebark	1 Gal.	2' hgt. x 4' wide	
○	Vinca minor 'Bowles'	2 Gal.	3' hgt. 3' wide	
○	Bowles' Common Periwinkle	2 Gal.	3' hgt. 3' wide	
○	Rosa x 'Noesplash'	2 Gal.	3' hgt. 3' wide	
○	Pink Splash Groundcover Rose	2 Gal.	3' hgt. 3' wide	
○	Spiraea japonica 'Goldmound'	2 Gal.	3' hgt. 3' wide	
○	Goldmound Spirea	2 Gal.	3' hgt. 3' wide	
GROUND COVERS/ GRASSES/ PERENNIALS				
SEE DETAIL 4/L2.0				
○	Coreopsis rosea 'Sweet Dreams'	1 Gal.	1' hgt. x 1' wide	
○	Sweet Dreams Tickseed	1 Gal.	3' hgt. x 2' wide	
○	Calamagrostis x. acutiflora 'Overdam'	1 Gal.	18" hgt. x 2' wide	
○	Dwarf Feather Grass	1 Gal.	2' hgt. x 3' wide	
○	Hemerocallis x 'Stella De Oro'	1 Gal.	2' hgt. x 3' wide	
○	Stella De Oro Daylily	1 Gal.	2' hgt. x 3' wide	
○	Pennisetum alopecuroides 'Little Bunny'	1 Gal.	2' hgt. x 3' wide	
○	Little Bunny Dwarf Fountain Grass	1 Gal.	2' hgt. x 3' wide	

### SITE DEVELOPMENT FEATURES

SINGLE FAMILY AREA	1.38 ACRES TOTAL
ZONING	R-3
SINGLE FAMILY UNITS	21
TOTAL OPEN/Common AREA	.35 ACRES
PERCENT OPEN AREA	25%
BICYCLE PARKING	12

### LANDSCAPING INFORMATION

- ROADWAY LANDSCAPE BUFFERS:  
E. 45TH STREET:  
200' FEET OF STREET FRONTAGE  
STREET TREES @ 1/50' = 4 TREES REQUIRED (CLASS 1)  
6 TREES PROPOSED (CLASS 2)
- COMMON AREA LANDSCAPE PROVISIONS  
TREES - 1/1000 SQFT = 15 TREES REQUIRED  
= 34 TREES PROPOSED  
(does not include perimeter trees).  
SHRUBS - 1/150 SQFT = 103 SHRUBS REQUIRED  
= 103+ SHRUBS PROPOSED
- MITIGATION FOR REMOVAL OF EXISTING TREES:  
ALL EXISTING TREES ON THE SITE ARE IN POOR HEALTH OR NUISANCE TREES - NO  
MITIGATION NECESSARY - COORDINATE WITH THE CITY FORESTER IN THE FIELD BEFORE  
ANY EXISTING TREES ARE DAMAGED OR REMOVED.
- AMENITIES PROVIDED:  
BIKE RACK  
PLAYGROUND  
PICNIC SHELTER  
PICNIC TABLE

### OWNER'S REP

THE LAND ARCHITECT LLC  
141 N. PALMETTO #1731  
EAGLE, ID 83616  
(208) 890-8669

### LANDSCAPE ARCHITECT

SOUTH BECK & BAIRD  
JOHN ROTERS  
2002 S VISTA AVENUE  
BOISE, ID 83705  
208-342-2999

### ENGINEER

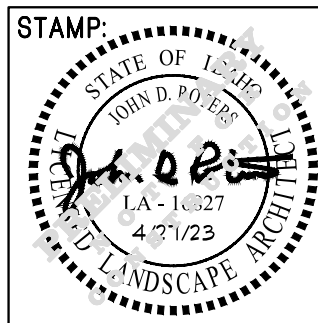
KIMLEY-HORN  
JAY WALKER  
100 W IDAHO STREET, SUITE 210  
BOISE, IDAHO 83702  
208-906-0883

### CALLOUT LEGEND

- 10'x20' VISION TRIANGLE
- SHADE STRUCTURE; PER OWNER
- PLAY STRUCTURE; PER OWNER
- MAILBOX CLUSTERS; PER ARCHITECT
- MONUMENT SIGN; PER ARCHITECT
- BIKE RACK; SEE DETAIL 7/L2.0
- PICNIC TABLE; SEE DETAIL 8/L2.0
- COORDINATE WITH ARCHITECT FOR CONCRETE AROUND MAILBOX CLUSTER
- MULTIPLE EXISTING VOLUNTEER ELM & UNHEALTHY TREES TO BE REMOVED

### LANDSCAPE SHEET INDEX

- L1.0 LANDSCAPE PLAN.
- L2.0 LANDSCAPE NOTES AND DETAILS.



DATE:  
4/27/2023



Copyright © 2022  
All rights reserved. No reproduction or translation  
in any form or by any means without written permission of  
South Landscape Architecture P.C. or South  
Beck & Baird Landscape Architecture P.C. is  
unlawful and subject to criminal prosecution.

REVISIONS:		
No.	Date	Description

LANDSCAPE PLAN  
MOD COURT TOWNHOMES  
4522 E. 45TH ST., GARDEN CITY, IDAHO

DRAWN BY:  
JRB

CHECKED BY:  
JDR

PROJECT NUMBER  
22-219

SHEET:  
L1.0

THE PROFESSIONAL SERVICES OF THE DESIGN PROFESSIONAL ARE UNDERTAKEN FOR AND ARE PERFORMED IN THE INTEREST OF THE CLIENT AND CONTRACTOR. QUALITY IS ASSURED BY THE DESIGN PROFESSIONAL FOR THE BENEFIT OF ANY OTHER PERSON INVOLVED IN THE PROJECT.

DESIGN REVIEW



## LANDSCAPE NOTES:

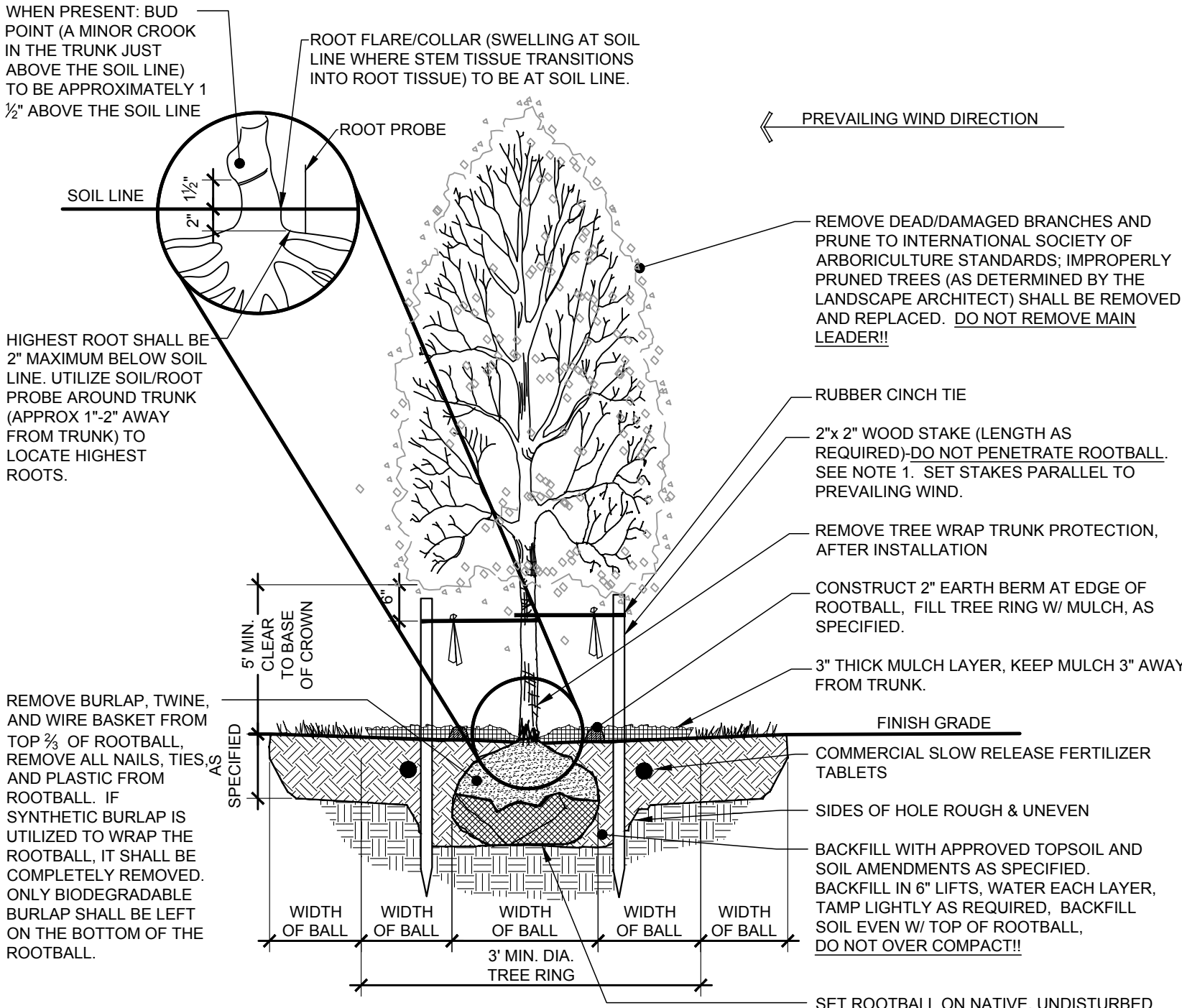
- ALL PLANT MATERIAL SHALL CONFORM TO THE AMERICAN NURSERYMAN STANDARDS FOR TYPE AND SIZE SHOWN. PLANTS WILL BE REJECTED IF NOT IN A SOUND AND HEALTHY CONDITION. ALL PLANT MATERIAL SHALL BE GRADE #1 OR BETTER.
- ALL PLANTING BEDS AND TREE WELLS IN LAWN AREAS (WELLS TO BE 3' IN DIAMETER) SHALL BE COVERED WITH A MINIMUM OF 3" DEPTH OF BLACK AND TAN 1" ROCK MULCH. SUBMIT SAMPLE FOR APPROVAL BY OWNER.
- ALL LAWN AREAS SHALL BE SODDED WITH 100% TURF TYPE TALL FESCUE (FESTUCA ARUNDINACIA). CONTRACTOR SHALL VERIFY AND MATCH THE VARIETY EXISTING IN THE ADJACENT DEVELOPMENT.
- ALL PLANT MATERIAL SHALL BE GUARANTEED FOR A PERIOD OF ONE YEAR BEGINNING AT THE DATE OF ACCEPTANCE BY OWNER. REPLACE ALL PLANT MATERIAL FOUND DEAD OR NOT IN A HEALTHY CONDITION IMMEDIATELY WITH THE SAME SIZE AND SPECIES AT NO COST TO THE OWNER.
- PLANTING BACKFILL FOR TREES AND PLANTING BEDS SHALL BE 5 PARTS TOPSOIL AND 1 PART COMPOST WITH STRAW. STAKE ALL TREES PER DETAILS.
- ALL LAWN AREAS SHALL HAVE 6" OF TOPSOIL AND ALL PLANTING BEDS SHALL HAVE 12" OF TOPSOIL (MINIMUM). TOPSOIL SHALL BE A LOOSE, FRIABLE, SANDY LOAM, CLEAN AND FREE OF TOXIC MATERIALS, NOXIOUS WEEDS, WEED SEEDS, ROCKS, GRASS, OR OTHER FOREIGN MATERIAL LARGER THAN 1" IN ANY DIMENSION, A PH FROM 5.5 TO 7.0. TOP SOIL FROM SITE SHALL BE USED, IF MEETING THESE STANDARDS. PLACE 1/2" COMPOST OVER ALL LANDSCAPED AREAS AND ROTOTILL INTO TOP 4". SPREAD, COMPACT, AND FINE GRADE TOPSOIL TO A SMOOTH AND UNIFORM GRADE, 1" BELOW SURFACE OF WALKS AND CURBS IN AREAS TO BE SODDED AND 3" IN PLANTING BED AREAS.
- FERTILIZE ALL TREES AND SHRUBS WITH 'AGRIFORM' PLANTING TABLETS, 21 GRAM. QUANTITY PER MANUFACTURER'S RECOMMENDATION.
- PLANT MATERIAL SHALL NOT BE SUBSTITUTED WITHOUT THE WRITTEN PERMISSION OF OWNER. SUBMIT NAMES OF THREE SUPPLIERS CONTACTED IF SUBSTITUTION IS REQUESTED AND PLANT MATERIAL SPECIFIED IS NOT AVAILABLE.
- SHRUB PLANTING BEDS SHALL BE SHOVEL EDGED TO CREATE A DISTINCT SEPARATION OF LANDSCAPE TYPES.
- IMMEDIATELY CLEAN UP ANY TOPSOIL, OR OTHER DEBRIS ON SITE CREATED FROM LANDSCAPE OPERATION AND DISPOSE OF PROPERLY OFF SITE.
- ALL LANDSCAPE AREAS SHALL HAVE AN STATE OF THE ART AUTOMATIC UNDERGROUND SPRINKLER SYSTEM WHICH INSURES COMPLETE COVERAGE AND IS PROPERLY ZONED FOR REQUIRED WATER USES AND HAS A WEATHER STATION CAPABLE OF TURNING OFF FOR RAINFREEZE EVENTS. ALL SHRUB ZONES, SPRAY ZONES AND GEAR DRIVEN ZONES SHALL BE PLACED ON SEPARATE ZONES. DO NOT EXCEED A MAXIMUM OF 5 FPS IN ALL MAINLINE AND LATERAL LINES.
- COORDINATE ALL DRAINAGE AREAS AND UTILITIES WITH TREE LOCATIONS AND ADJUST PER FIELD CONDITIONS.
- ALL EXISTING TREES SHOWN TO REMAIN SHALL BE RETAINED AND PROTECTED THROUGH OUT CONSTRUCTION.
- NO TREES SHALL BE PLANTED WITHIN THE 10 FOOT CLEAR ZONE OF ALL ACHD STORM DRAIN PIPE, STRUCTURES, OR FACILITIES.
- STORM PONDS MUST BE PROTECTED FROM ANY AND ALL CONTAMINATION DURING THE CONSTRUCTION AND INSTALLATION OF THE LANDSCAPE IRRIGATION SYSTEM.
- ALL TREES TO BE LOCATED A MINIMUM OF 5 FEET OR GREATER FROM THE BACK OF ANY SIDEWALK.
- TRIM ALL TREES WITHIN VISION TRIANGLES TO 8' ABOVE FINISH GRADE TO MEET ACHD STANDARDS.

## IRRIGATION NOTES:

- ALL LANDSCAPED AREAS SHALL HAVE AN AUTOMATIC UNDERGROUND SPRINKLER SYSTEM WHICH INSURES COMPLETE COVERAGE AND PROPERLY ZONED FOR REQUIRED WATER USES. EACH HYDROZONE IS TO BE IRRIGATED WITH SEPARATE INDIVIDUAL STATIONS.
- PLANTER BEDS AND LAWN AREAS ARE TO HAVE SEPARATE HYDRO-ZONES. POP-UP SPRINKLER HEADS SHALL HAVE A MINIMUM RISER HEIGHT OF 4 INCHES AT LAWN AREAS AND 18" AT PLANTER BEDS.
- PLANTER BEDS ARE TO HAVE DRIP IRRIGATION SYSTEM OR POP-UP SPRAY SYSTEM.
- ELECTRONIC WATER DISTRIBUTION/ TIMING CONTROLLERS ARE TO BE PROVIDED. MINIMUM CONTROLLER REQUIREMENTS ARE AS FOLLOWS:
  - PRECISE INDIVIDUAL STATION TIMING
  - RUN TIME CAPABILITIES FOR EXTREMES IN PRECIPITATION RATES
  - AT LEAST ONE PROGRAM FOR EACH HYDROZONE
  - SUFFICIENT MULTIPLE CYCLES TO AVOID WATER RUN-OFF
- POWER FAILURE BACKUP FOR ALL PROGRAMED INDIVIDUAL VALVED WATERING STATIONS WILL BE DESIGNED AND INSTALLED TO PROVIDE WATER TO RESPECTIVE HYDRO-ZONES.
- INDIVIDUAL VALVED WATERING STATIONS WILL BE DESIGNED AND INSTALLED TO PROVIDE WATER TO RESPECTIVE HYDRO-ZONES.
- THE IRRIGATION SYSTEM SHALL BE DESIGNED TO PROVIDE 100% HEAD TO HEAD COVERAGE WITH TRIANGULAR SPACING.
- SPRINKLER HEADS SHALL BE ADJUSTED TO REDUCE OVERSPRAY ONTO IMPERVIOUS SURFACES (BUILDINGS, SIDEWALKS, DRIVEWAYS, AND ASPHALT AREAS).
- PROVIDE MINIMUM (1) QUICK COUPLER VALVE PER EACH (6) AUTOMATIC VALVE ZONES. APPROVE Q.C.V. LOCATIONS WITH LANDSCAPE ARCHITECT.
- POINT OF CONNECTION TO BE APPROVED BY JURISDICTION PROVIDING WATER SOURCE.

## DISCLAIMER:

THIS DRAWING HAS BEEN PREPARED BASED UPON INFORMATION PROVIDED, IN PART BY OTHERS. WHILE THIS INFORMATION IS BELIEVED TO BE RELIABLE, SOUTH BECK AND BAIRD, P.C. CANNOT ASSURE ITS ACCURACY AND THIS IS NOT RESPONSIBLE FOR THE ACCURACY OF THIS DRAWING OR FOR ANY ERRORS OR OMISSIONS WHICH MAY HAVE BEEN INCORPORATE INTO IT AS A RESULT. SOUTH BECK AND BAIRD, P.C. ASSUMES NO LIABILITY FOR ANY MISINFORMATION.

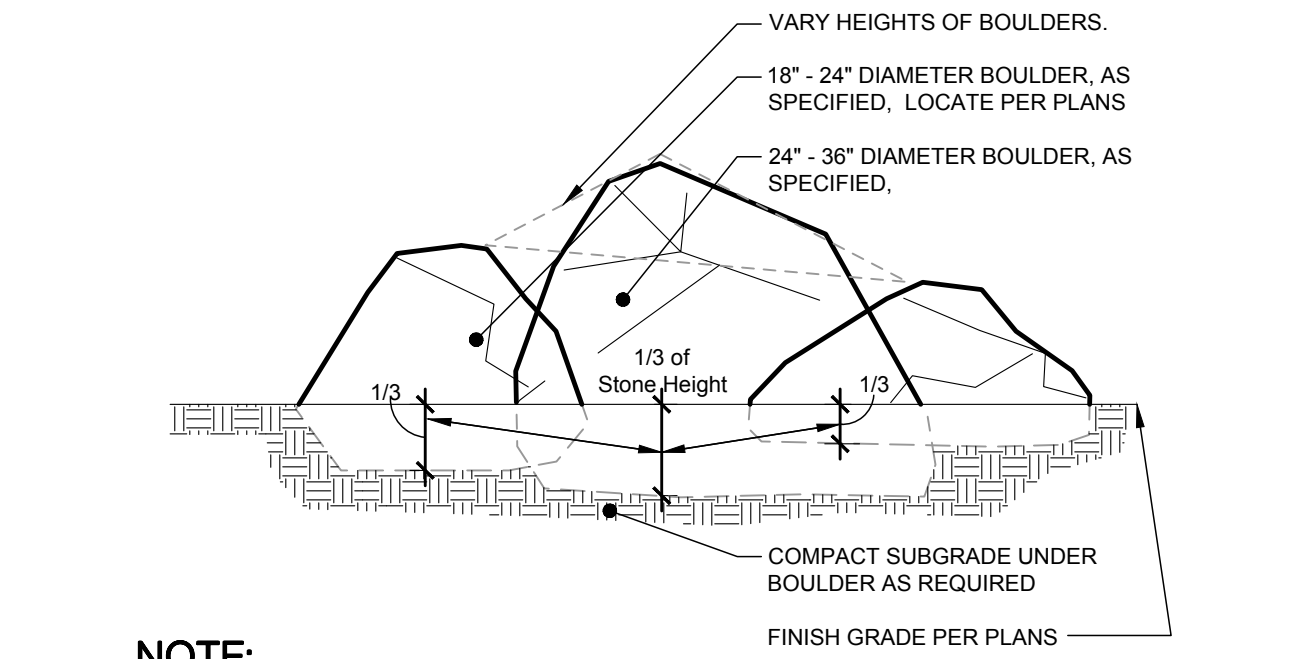


### NOTES:

- THE STAKING OF TREES IS TO BE THE CONTRACTOR'S OPTION; HOWEVER, THE CONTRACTOR IS RESPONSIBLE TO INSURE THAT ALL TREES ARE PLANTED STRAIGHT AND THAT THEY REMAIN STRAIGHT FOR LENGTH OF WARRANTY PERIOD OR 1 YEAR AFTER SUBSTANTIAL COMPLETION WHICHEVER IS GREATER. ALL STAKING SHALL BE REMOVED AT THE END OF THE WARRANTY PERIOD.
- IN THE EVENT OF A QUESTION OR LACK OF CLARITY ON THE DRAWINGS, THE CONTRACTOR IS TO NOTIFY THE LANDSCAPE ARCHITECT BEFORE PROCEEDING.
- LANDSCAPE CONTRACTOR IS TO NOTIFY THE LANDSCAPE ARCHITECT AND OWNER PRIOR TO INSTALLATION OF PLANT MATERIAL.
- WRAP RUBBER CINCH TIES AROUND THE TREE TRUNKS AND STAKES USING EITHER THE STANDARD OR FIGURE EIGHT TYING METHOD. SECURE THE TIES TO THE STAKES WITH GALVANIZED NAILS TO PREVENT SLIPPAGE.
- WATER TREE TWICE WITHIN THE FIRST 24 HOURS.
- IN THE EVENT HARDPAN SOILS PREVENT TREE PLANTING AS DETAILED, NOTIFY THE LANDSCAPE ARCHITECT IMMEDIATELY.
- FOR TREES LOCATED WITHIN ROADSIDE PLANTERS LESS THAN 8'-0" IN WIDTH, PROVIDE TREE ROOT BARRIER (DEEPROOT #24-2 OR APPROVED EQUAL). LOCATE ROOT BARRIER AT BACK OF CURB AND EDGE OF SIDEWALK. EXTEND ROOT BARRIER TO 80% OF MATURE TREE CANOPY. ALL TREE INSTALLATIONS SHALL CONFORM TO ALL AGENCY APPROVAL REQUIREMENTS. CONTRACTOR SHALL VERIFY PRIOR TO ANY INSTALLATIONS.

## 1 DECIDUOUS TREE PLANTING

NOT TO SCALE

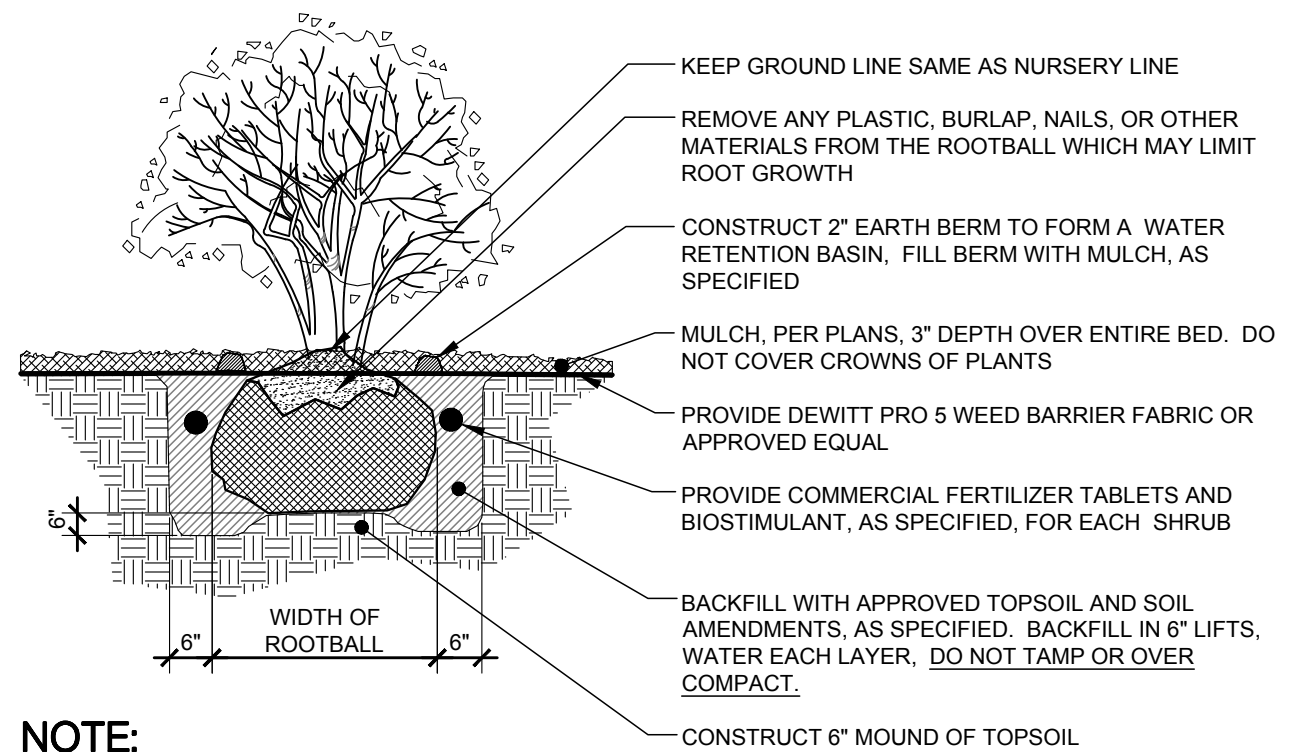


### NOTE:

- NOTIFY LANDSCAPE ARCHITECT WHEN PLACING BOULDERS FOR APPROVAL.
- PLACE BOULDERS PRIOR TO INSTALLATION OF IRRIGATION.
- CLEAN BOULDERS OF SOIL AND LOOSE DEBRIS.
- WHEN PLACING BOULDERS, BURY 1/2 OF BOULDER BELOW FINISH GRADE.
- DO NOT SCAR OR DAMAGE BOULDERS.
- WHEN GROUPING BOULDERS, DISTRIBUTE SIZES EVENLY (I.E., IN A GROUP OF (6), (2) WILL BE LARGE, (2) WILL BE MEDIUM, AND (2) WILL BE SMALL).

## 2 BOULDER INSTALLATION

NOT TO SCALE

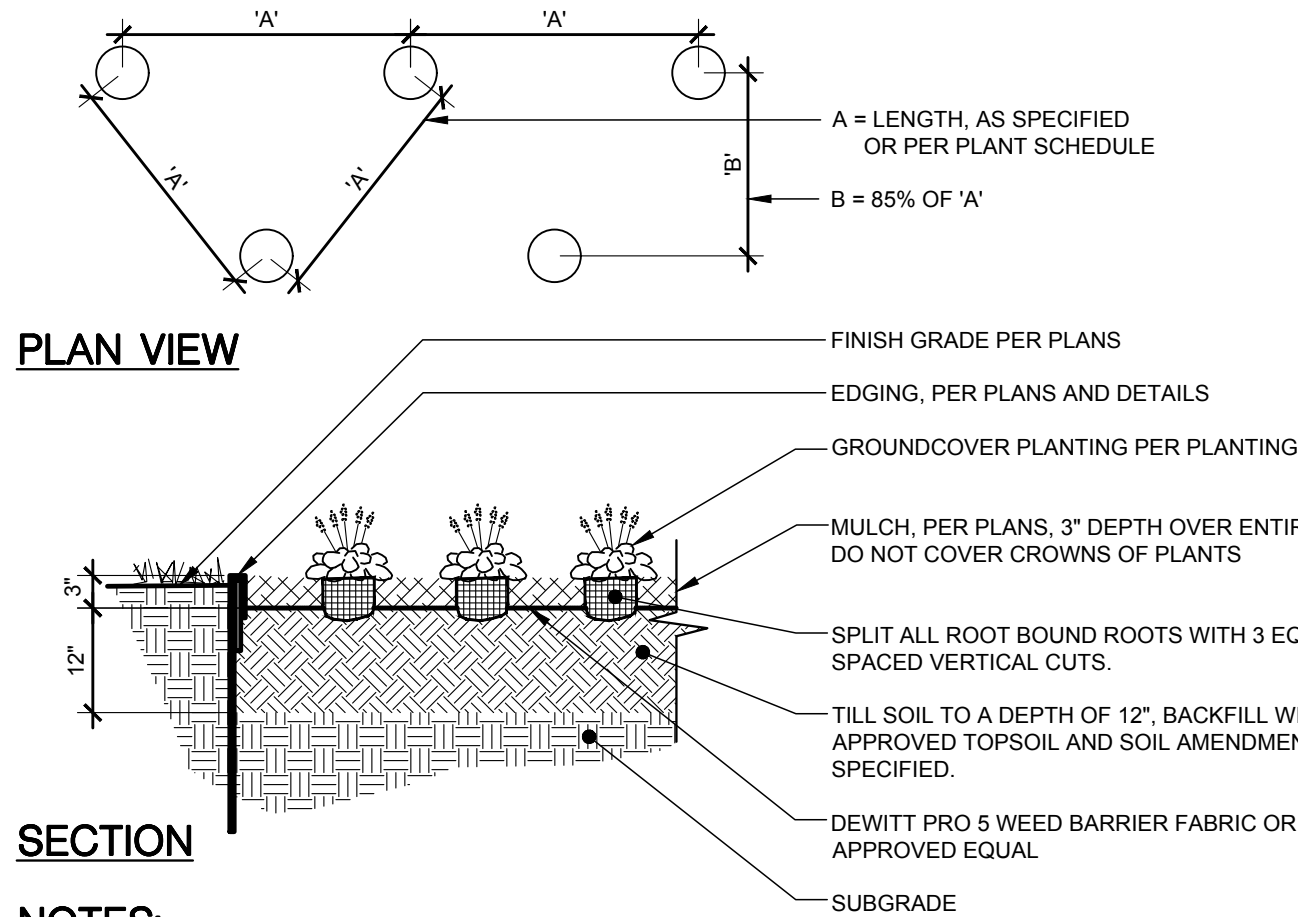


### NOTE:

- WATER SHRUB TWICE WITHIN FIRST 24 HOURS.
- APPLY SPECIFIED PRE-EMERGENT PER MANUFACTURER'S RECOMMENDATIONS TO ALL GROUNDCOVER BEDS.

## 3 SHRUB PLANTING

NOT TO SCALE



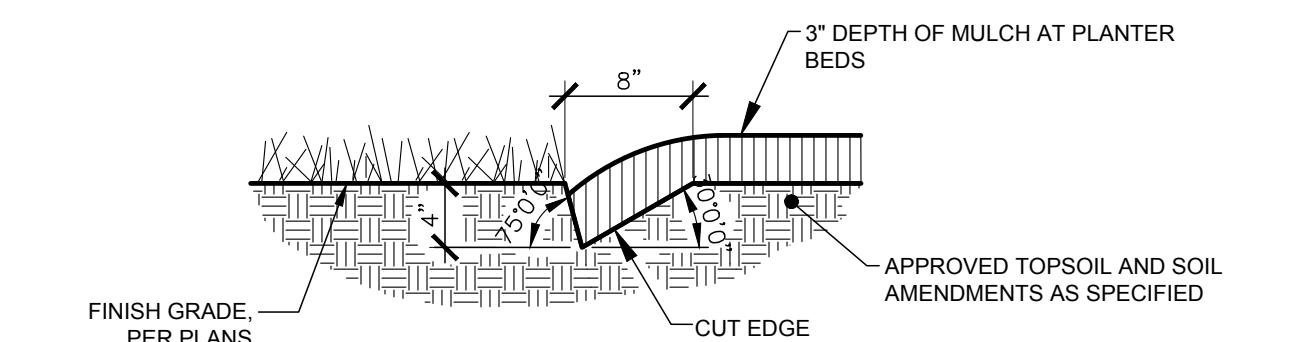
### SECTION

### NOTES:

- ALL GROUNDCOVER PLANTS TO BE PLANTED ON CENTER AND IN A TRIANGULAR PATTERN.
- APPLY SPECIFIED PRE-EMERGENT PER MANUFACTURER'S RECOMMENDATIONS TO ALL GROUNDCOVER BEDS.

## 4 PERENNIAL & GROUNDCOVER PLANTING

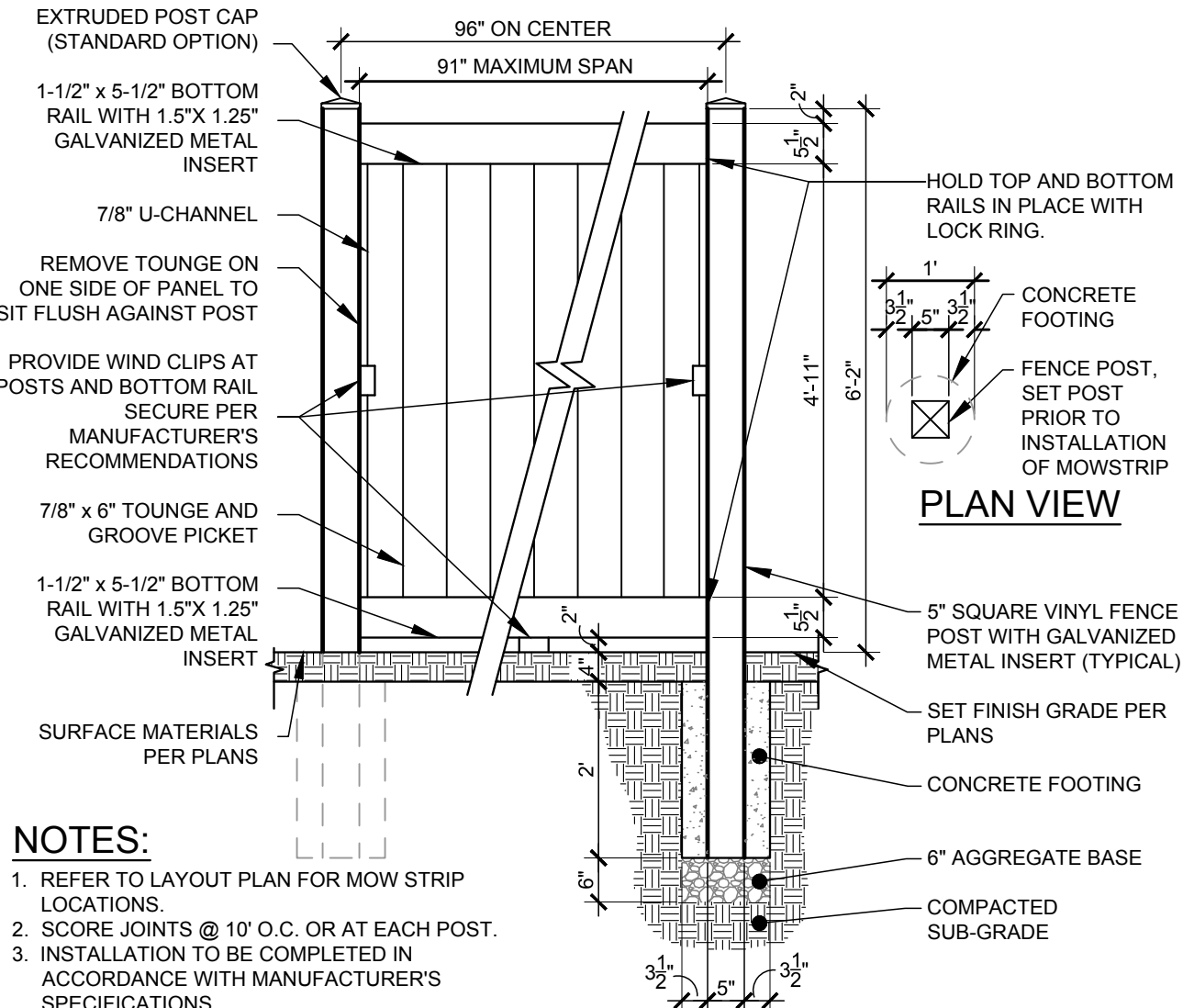
NOT TO SCALE



## 5 PLANTER BED CUT EDGE

(TYPICAL AT TREES IN TURF AREAS)

NOT TO SCALE

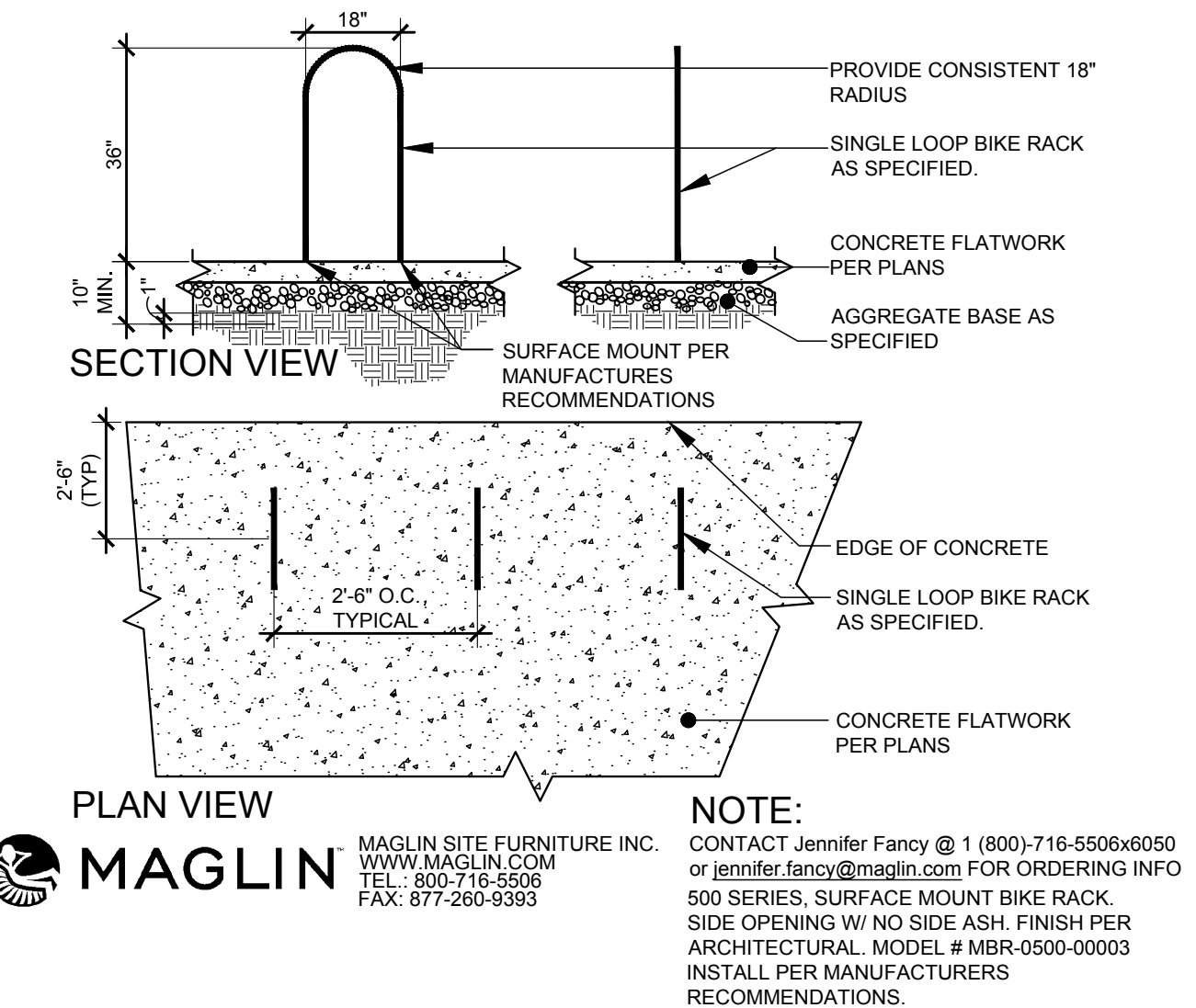


### NOTES:

- REFER TO LAYOUT PLAN FOR MOW STRIP LOCATIONS.
- SCORE JOINTS @ 10' O.C. OR AT EACH POST.
- INSTALLATION TO BE COMPLETED IN ACCORDANCE WITH MANUFACTURER'S SPECIFICATIONS.

## 6 VINYL FENCE PANEL

SCALE: 1/2"= 1'-0"



### PLAN VIEW

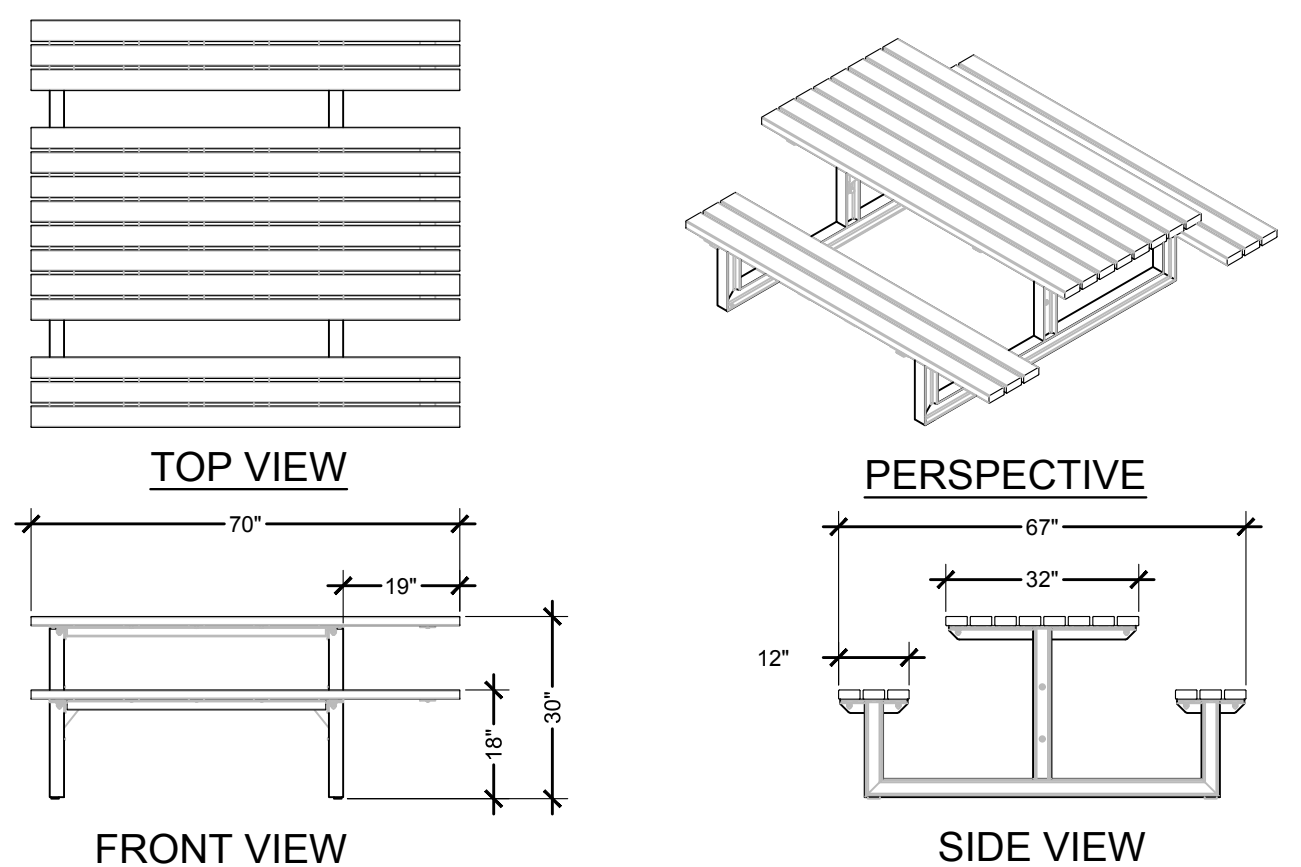


MAGLIN SITE FURNITURE INC.  
WWW.MAGLIN.COM  
TEL: 800-716-5506  
FAX: 877-260-9393

NOTE:  
CONTACT Jennifer Fancy @ 1 (800)-716-5506x6050  
or jennifer.fancy@maglin.com FOR ORDERING INFO  
500 SERIES, SURFACE MOUNT BIKE RACK,  
SIDE OPENING W/ NO SIDE ASH. FINISH PER  
ARCHITECTURAL. MODEL # MSR-0500-00003  
INSTALL PER MANUFACTURERS  
RECOMMENDATIONS.

## 7 BIKE RACK

Scale: 3/4"= 1'-0"

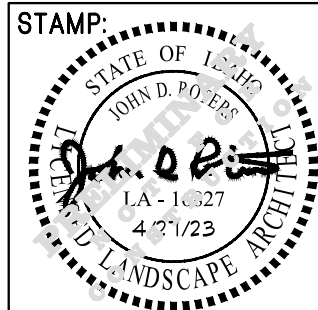


MAGLIN SITE FURNITURE INC.  
WWW.MAGLIN.COM  
TEL: 800-716-5506  
FAX: 877-260-9393

NOTE:  
CONTACT Jennifer Fancy @ 1 (800)-716-5506x6050  
or jennifer.fancy@maglin.com FOR ORDERING INFO  
210 SERIES WOOD GRAIN TEXTURE HIGH DENSITY  
POLYETHYLENE IN CEDAR, WHEELCHAIR  
ACCESSIBLE, SURFACE MOUNT CLUSTER  
SEATING WITH MATTE BLACK FINISH. INSTALL PER  
MANUFACTURERS RECOMMENDATIONS.

## 8 PICNIC TABLE

Scale: 1/2"= 1'-0"



DATE: 4/27/2023



Copyright © 2022  
All rights reserved. No reproduction in any form or by any means without written permission of South Landscape Architecture P.C. or Dba South Beck & Baird Landscape Architecture P.C. is authorized and subject to copyright protection.

REVISIONS:		
No.	Date	Description

LANDSCAPE DETAILS  
MOD COURT TOWNHOMES  
4522 E. 45TH ST., GARDEN CITY, IDAHO

DRAWN BY:

JRB

CHECKED BY:

JDR

PROJECT NUMBER

22-219

SHEET:

L2.0

DESIGN REVIEW