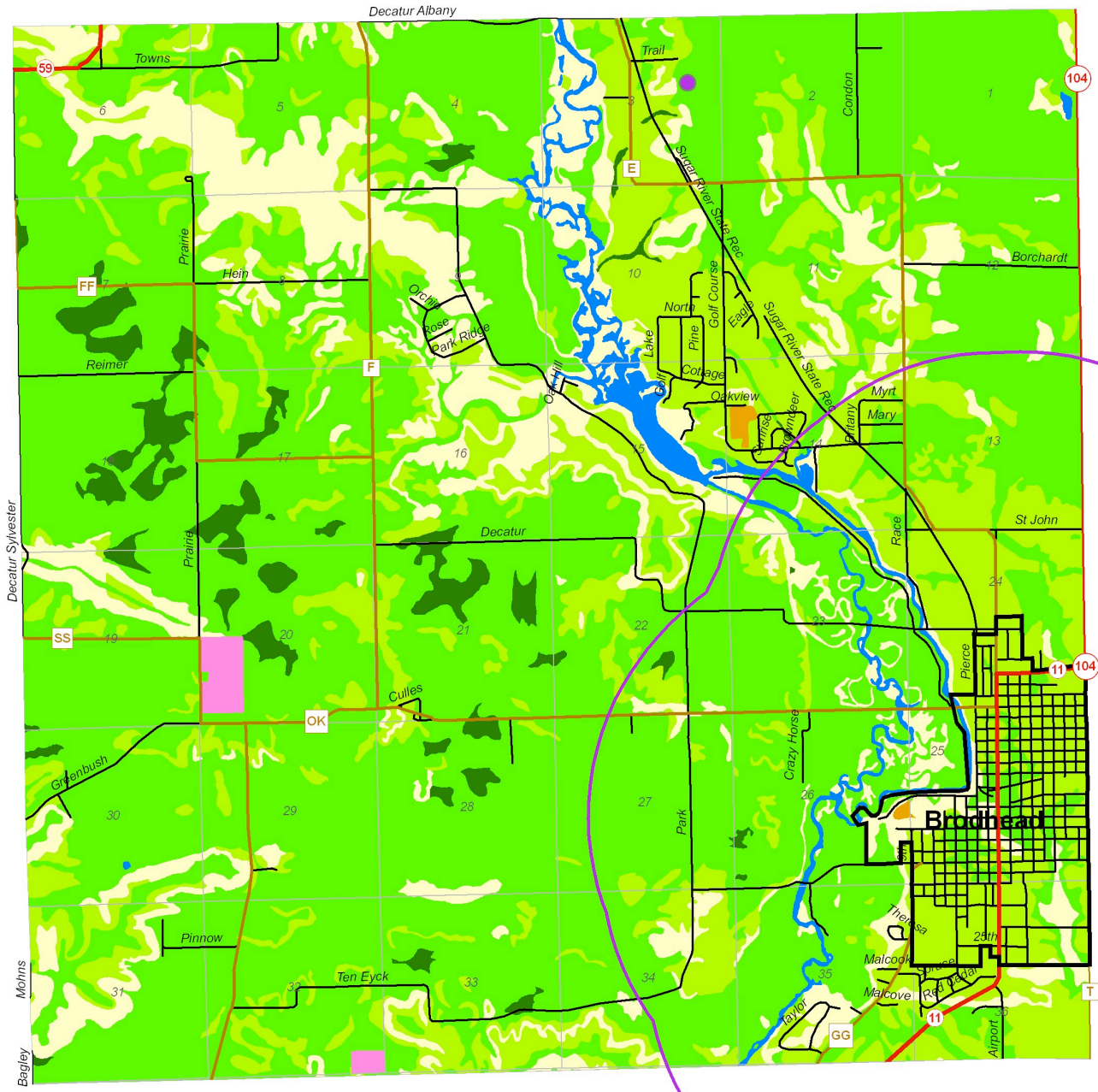


MAP 3.1.1 SOIL CLASSIFICATIONS

- TOWN OF DECATUR -
GREEN COUNTY, WISCONSIN



SOUTHWESTERN WISCONSIN
REGIONAL PLANNING COMMISSION
719 Pioneer Tower
1 University Plaza
Platteville, WI 53818

April 14, 2005

Legend

- | | |
|-----------------------|-------------------------------|
| Sections | Soil Class 3 |
| 1.5 Mile ETZ Boundary | Soil Class 4 - 8 |
| State Roads | Gravel Pile |
| County Roads | Landfill |
| Local Roads/Drives | Municipal Wastewater Facility |
| Soil Class 1 | Quarry |
| Soil Class 2 | Water |

1 inch equals 0.88 miles



This map is neither a legally recorded map nor a technical survey and is not intended to be one. SWWRPC is not responsible for any inaccuracies herein contained.