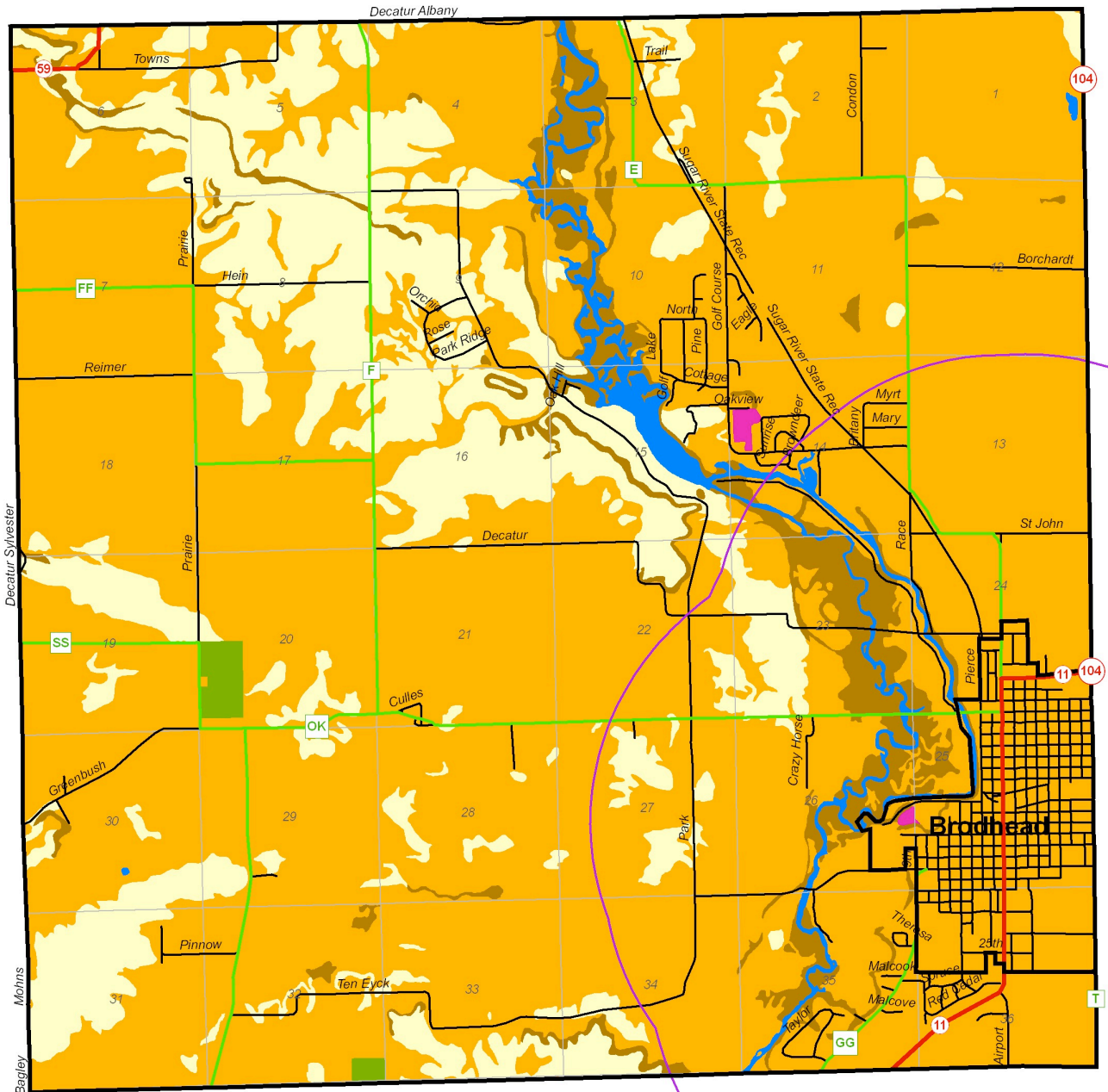


# MAP 3.2.10 DEPTH TO BEDROCK

- TOWN OF DECATUR -  
GREEN COUNTY, WISCONSIN



## Legend

- |                             |                               |
|-----------------------------|-------------------------------|
| Municipal Boundary          | More Than 5 Feet To Bedrock   |
| Sections                    | Variable Depths To Bedrock    |
| 1.5 Mile ETZ Boundary       | Water                         |
| State Roads                 | Quarry                        |
| County Roads                | Gravel Pile                   |
| Local Roads                 | Municipal Wastewater Facility |
| Less Than 5 Feet To Bedrock | Landfill                      |

1 inch equals 0.88 miles



This map is neither a legally recorded map nor a technical survey and is not intended to be one. SWWRPC is not responsible for any inaccuracies herein contained.



SOUTHWESTERN WISCONSIN  
REGIONAL PLANNING COMMISSION  
719 Pioneer Tower  
1 University Plaza  
Platteville, WI 53818

November 12, 2004