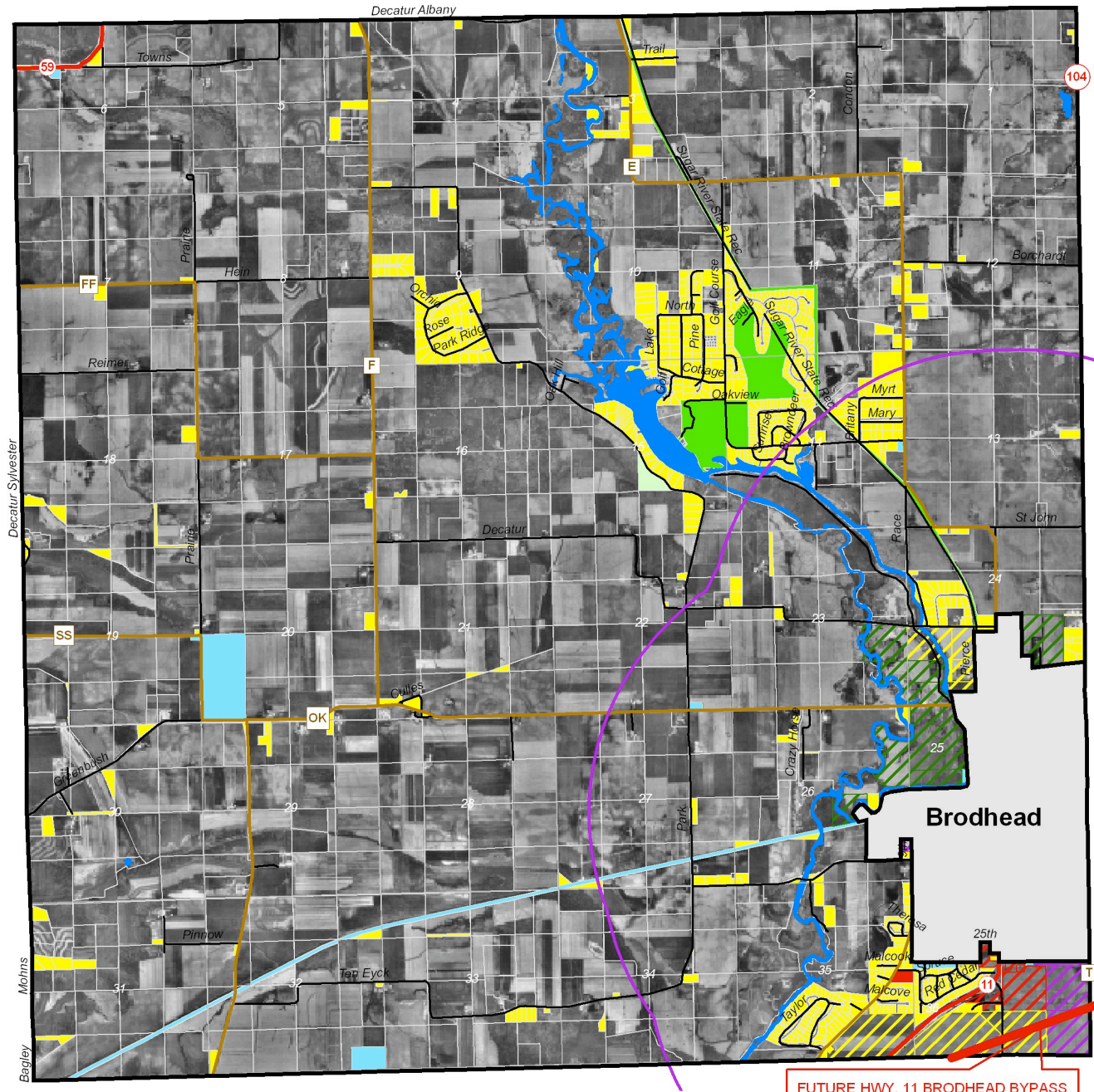


MAP 8.3 PROPOSED LAND USE

- TOWN OF DECATUR -
GREEN COUNTY, WISCONSIN



FUTURE HWY. 11 BRODHEAD BYPASS

Small Parcels Note:
Parcels less than five acres as of
2004 or as noted as a subdivision
in the Green County 2004 Plat Book.



SOUTHWESTERN WISCONSIN
REGIONAL PLANNING COMMISSION
719 Pioneer Tower
1 University Plaza
Platteville, WI 53818

August 4, 2005

Flyover Date: 1995

Legend

- Municipal Boundary
- City of Brodhead
- Sections
- 1.5 Mile ETZ Boundary
- State Roads
- County Roads
- Local Roads
- Agriculture / Open Space

- Small Parcels
- Rural Residential
- Commercial
- Industrial
- Public Facility
- Conservancy
- Recreation
- Park - State
- Water

* Proposed Land Use

- Residential
- Commercial
- Industrial
- Public Facility
- Conservancy

* Proposed land uses are
from the city of Brodhead's
comprehensive plan.

1 inch equals 0.85 miles



This map is neither a legally recorded map
nor a technical survey and is not intended
to be one. SWWRPC is not responsible for
any inaccuracies herein contained.

S:\WGroups\SWWRPC\GIS\GreenCounty\Town\ Villages\Cities\
Decatur\Town\Projects\SmartGrowth\8-3\Proposed_LandUse05_DecaturTown-8x11