

A Message From LBMD Chairman David Bitter:

The lake management district is pretty quiet this time of year. No word on any decision regarding the Hotel Beulah issue. Double D's has been torn down, but there is no official word on what will happen there, though there is no end of rumors on the subject.

Just like everyone else we are looking forward to summer and all of the summer activities. Our harvesting equipment is ready and waiting for the plants to grow. The District is looking for an additional equipment operator, so if anyone knows of someone who would like to spend the summer riding around on Lake Beulah, call the hot line.

262-363-5359 or www.lbmd.org Contact Us

Things will get busy soon with the warm sun and boating activity. Stay in touch by attending our monthly meeting. Check the website at lbmd.org and you can find out when we meet. Our usual date is the third Tuesday of the month at 5:30 PM, but it does change from time to time. We'll also will let you know of important news by our direct email program. If you haven't already given us your email address, do it now by going to our web site, lbmd.org and fill out contact information sheet so we can add you to the list. Looking forward to a great summer of 2023!



A recent application was made by a riparian owner to the WIDNR to dredge a sensitive area of the lake for access purposes.

There was a hearing for on May 9, 2023 that we allege had due process issues. If a new hearing is granted, the time, date and log in information will be posted on the LBMD website.



Hwy J Dam Report: Spring showers brought several inches of rain to the lake. Hwy J Dam operated successfully without incident. As a DNR requirement, the dam is inspected frequently. Because it is a new structure, LBMD does not anticipate issues with this upcoming inspection.

LBMD NEWSLETTER SPRING 2023

LAKE BEULAH MANAGEMENT DISTRICT REPRESENTATIVES:

DAVID BITTER, CHAIRMAN
STAN ALGER, VICE CHAIR
CHRIS KUBICEK, TREASURER
VAL JOHNSON, SECRETARY
JOHN BECKER, COMMISSIONER
GREG THOMAS, COMMISSIONER
RICK STACEY, COMMISSIONER

WWW.LBMD.ORG

LBMD Mailing Address:
PO BOX 71
East Troy, WI 53120



Wilmer's Grove Boat Launch

Boat Launch Fees Apply
April 1- November 1

All Vessels MUST pay a launch fee
Per Town Ordinance 16.25.030

Vessels may launch, if the parking lot is full,
provided they have paid the launch fee
Per Town Ordinance 16.25.030

Parking/Launch receipt MUST be prominently
displayed on the dash of the vehicle
Per Town Ordinance 16.25.030

Launch Fees:

	WI Res	Non Res
Vehicle only (no trailer)	\$8	\$8
Non-Motorized Watercraft	\$8	\$8
Boat less than 20 ft	\$11	\$11
Boat 20 ft to 26 ft	\$13	\$20
Boat 26 ft and longer	\$16	\$20
Annual Commercial Pass	\$175	
Annual Season Pass under 20 ft	\$110	
Annual Season Pass 20 ft and longer	\$130	

as of May 2023

LBMD continues to monitor Lake Beulah's environmental health, in terms of water quality and quantity. We have three on-going monitoring locations (blue dots.) Groundwater flow into the lake is monitored with two groundwater monitoring wells. The groundwater contribution to the lake is very important for the lake's water quality, and most of the groundwater flow into the lake comes from the south. Unfortunately, the Village of East Troy's Well 7 is also located near the south shore of the lake, and intercepts much of the groundwater flowing into the lake. Two groundwater monitoring locations (yellow stars) were established to monitor the flow of groundwater into the lake.

The first line of detection of impacts of a reduction in groundwater flow into the lake is at the lakebed. Freshwater aquatics biologist Dr. Tim Ehlinger is monitoring various parameters that are indicators of a change in water quality on the lakebed at four locations (purple dots.) Three of these locations are along the southern shore, and one is situated across the lake, for background water quality.

Finally, the US Geological Survey continues its monitoring of lake water quality. Three times per year they collect water samples from three locations. Their work, along with independent sampling completed by the LBPIA show that the lake's water quality remains very good.

LAKES are highly valued for their recreational, aesthetic, scenic, and water-supply qualities. The water they contain is one of the most treasured of our natural resources.

Lakes constitute important habitats and food resources for a diverse array of fish, aquatic life, and wildlife.

Natural Lakes vs Impounded Lakes? Lake Beulah is a series of three (3) natural basin lakes fed by ground water springs in the lake-bed connected as one surface body of water when a dam was built at the North outlet of Mill (Tripp) Lake. Some people would call this an impounded Lake because the level is artificially produced by a man-made element. The true definition of impoundment is a closed basin. Lake Beulah, however, still has an inlet located at Stringers Bridge from the Pickerel Fen and an outlet located at the Highway J Dam to the Mukwonago River wetlands watershed. This forms a drainage type lake basin with a distinct flow of water from the inlet to the outlet.

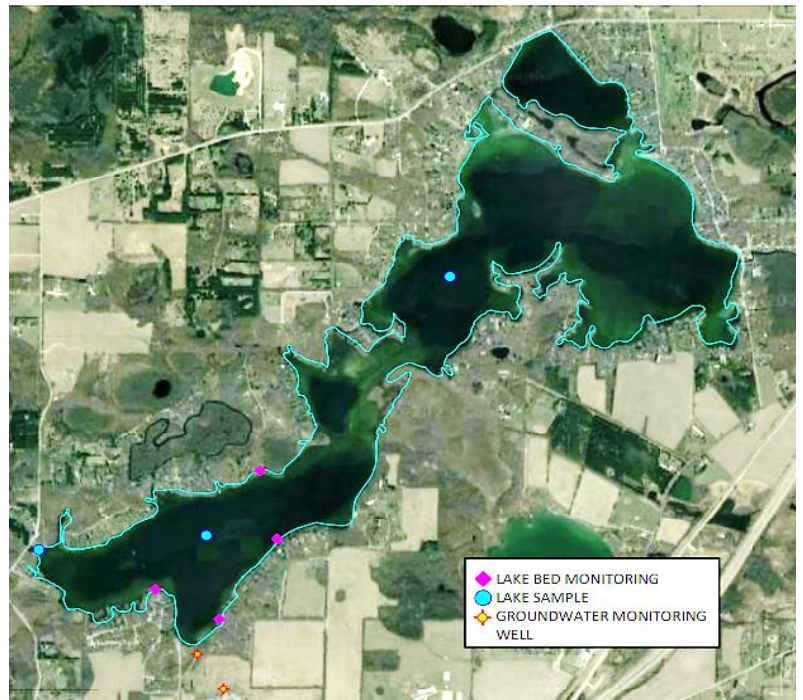
What determines the health of a lake? The concentration of dissolved oxygen in water plays an important role in determining the type and amount of organisms (fish, invertebrates, plants etc.) that live in a lake and is a good indicator of the lake's overall health.

Aquatic Plant Pick Up Hotline

(262) 363- 5359

Please leave a message including your name and address

For raked out plants that are placed on piers, make sure there are no sticks, stones, or muck from bottom of the lake



Lake Beulah Fireworks on July 3rd

The Lake Beulah fireworks display will be held after dark on Monday, July 3rd (rain date July 4th). The fireworks are launched on the main lake around Buck Island. This annual tradition is organized by the Lake Beulah Fireworks

Committee, an all-volunteer group that collects donations. 100% of those funds are used to put on the spectacular Lake Beulah fireworks. Join your friends and neighbors on the lake to enjoy this special Independence Day celebration. For more information, or to donate, contact Dale Roble at lakebeulahfireworks@gmail.com.

What vegetation is at the bottom of a lake?

Some of the most common submerged lake vegetation in the Lake Beulah Watershed look like regular plants or grass. These include marsh aster, joe-pye weed, silky dogwood, black willow, bur oak, marsh milkweed, swamp aster, boneset, tussock sedge, beaked willow, white oak, water hemlock, ciliated brome grass, shooting star, great water dock, swamp thistle, sage willow, prairie dropseed, hoary puccoon, shrubby cinquefoil, kittentails, woolly sedge, brook lobelia, ohio goldenrod, death camas/white camas, and fen muhly grass and eurasian watermilfoil (non-native). Native submerged weeds are not as aggressive as nonnative weeds that seem to strive for lake domination.