

Emergency Operation Plan



for the
Town of Rockland
Manitowoc County, Wisconsin

Drafted: November 2025

Table of Contents

<i>STATEMENT OF PURPOSE AND COMMITMENT</i>	3
<i>Community Profile</i>	4
<i>MAP OF TOWNSHIP</i>	5
<i>HAZARD AND RISK EVALUATION</i>	6-7
<i>RESPONSE PROCEDURES</i>	8
1) Notification Procedures.....	8
2) Emergency Plan Manager Responsibilities.....	8
3) Emergency Personnel Communication.....	9
4) Residential Warnings, Public Information & Media.....	9
<i>EMERGENCY RESPONSE OPERATIONS</i>	10
1) Command Post Procedures.....	10
a) Chain of Command/Command Post Support Staff.....	10
b) Emergency Plan Manager.....	10
c) Supporting IC/EPM Manager.....	10
Fire Chief.....	10
Clerk.....	11
d) Information/Media Officer.....	11
e) Documentation Procedures.....	11-12
<i>EMERGENCY RESPONSE RESPONSIBILITIES</i>	13
1) Fire Department Responsibilities.....	13
2) Constabulary Responsibilities.....	13
3) Emergency Medical Services Responsibilities.....	13
4) Maintenance Department Responsibilities.....	13
5) Volunteer Responder Responsibilities.....	14
<i>EVACUATION PROCEDURES</i>	15
<i>EMERGENCY SHELTER LOCATIONS</i>	15
a) Transportation.....	15
b) Relocation Information.....	16
c) Extended Evacuation Procedures.....	16
<i>SHELTER IN PLACE</i>	17
<i>SPECIAL NEEDS SUPPORT</i>	17
<i>RESCUE OPERATIONS</i>	18
a. Response Personnel Safety.....	18
b. Incident & response Critique.....	18
<i>TESTING AND REVIEW OF THE EMERGENCY OPERATION PLAN</i>	19

Statement of Purpose and Commitment



Town of Rockland

Manitowoc County

615 Milwaukee St • Collins, WI 54207 • Phone 920-772-4055

Residents of the Town of Rockland:

Wisconsin Statute 323.14(1)b sets forth powers for the Chairman of the town of Rockland to act in the capacity of the **EMERGENCY PLAN MANAGER**. It directs the town to have this plan in place consistent with state accepted standards and authority to levy taxes to operate such program. With this plan in place, the **EMERGENCY PLAN MANAGER** has the power to authorize others to fulfill the positions as needed to efficiently complete the duties that arise during an emergency.

Upon adoption of this plan, the town Board authorizes the Chairman to act as stated in the plan and have authority to name persons to the positions that need to be addressed by the specific emergency. This plan shall be reviewed and revised annually.

Please be advised that some situations are not specifically covered, and each emergency will be handled in the most efficient and safe manner as deemed appropriate with consideration for safety and the availability of manpower and equipment.

If anyone recognizes errors or omissions in the plan, please advise the Town Board immediately so that they may be addressed in a timely manner.

Sincerely,

A handwritten signature in cursive script that reads "Rosalie M. Geiger".

Rosalie Geiger
Town of Rockland
Chairperson

Community Profile

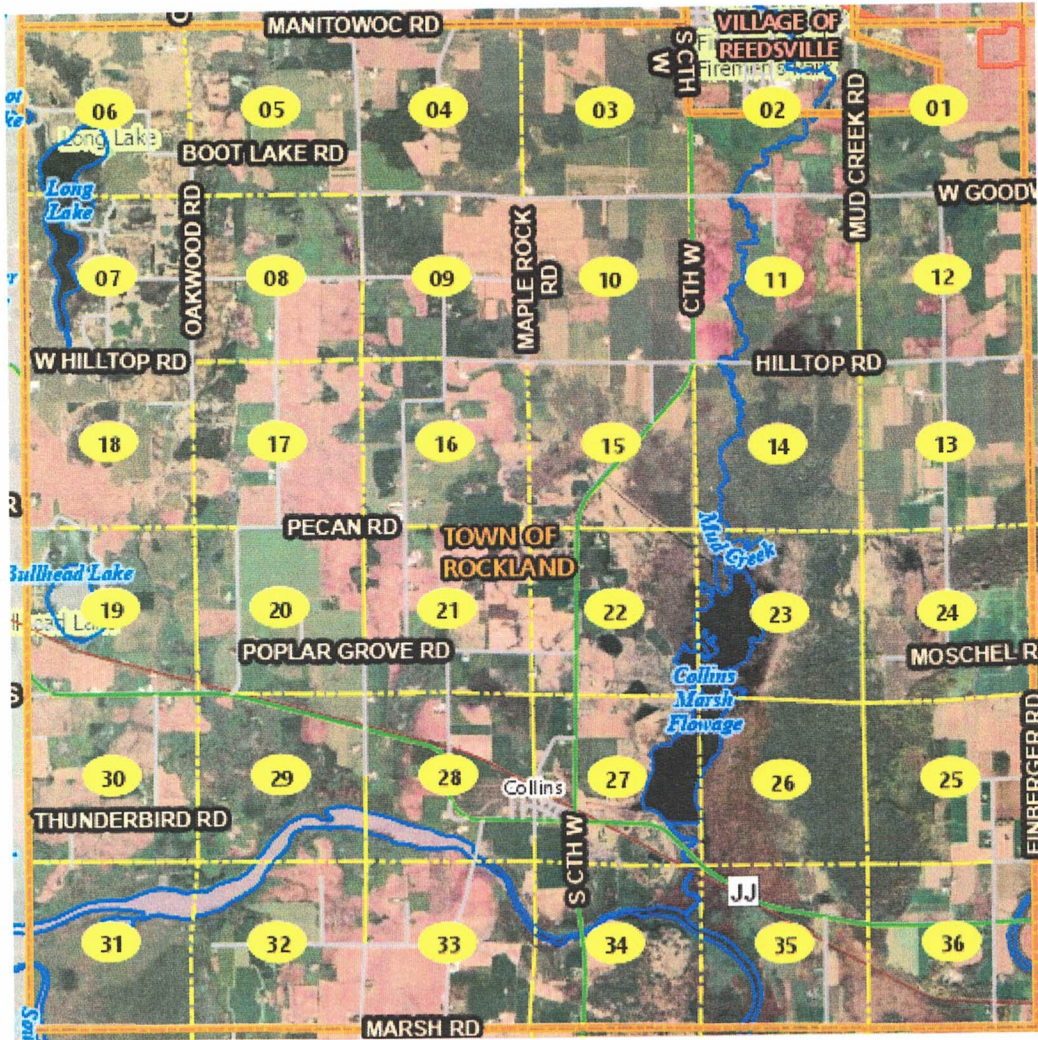
The **Town of Rockland** is a small, rural community of approximately 990 residents and approximately 36 square miles. The northern boundary is Manitowoc Rd and the Town of Maple Grove. The southern boundary is Marsh Rd and the Town of Eaton. The eastern boundary is the Town of Cato. The western boundary is Long Lake Rd and Calumet County.

The township consists of large tracts of agricultural land, natural conservation areas, and recreational area, i.e. Collins Marsh Wildlife Area, Long Lake and Bullhead Lake. The population and residential is spread throughout the township.

The Canadian Pacific Railroad runs through the town and very close to several residences. This presents the possibility that hazardous materials and cargo may be involved in an incident.

Map of Township

Town of Rockland Manitowoc County T19N R21E



Hazard and Risk Evaluation

The Town of Rockland is no more or no less likely to experience a natural or man-made disaster than other towns in Wisconsin. It has no remarkable natural features that make it prone to disasters. The transportation system does not make it any more likely to experience accidents than similarly situated towns. Its economic activities do not introduce any particularly dangerous situations.

The types of "natural" emergencies which are likely in the Town of Rockland include, but are not limited to:

• Tornadoes	• Hail	• Lightning	• Windstorms
• Heavy rains	• Flood conditions	• Dense fog	• Extreme cold
• Snowstorms	• Ice storms	• Wildfires	• Extreme Heat

The ability to predict the occurrence of such situations is limited by the technology and expertise of meteorologists. At best, the town can have a few days to prepare for certain conditions. Often, conditions will change rapidly, and if they are more severe than anticipated, an emergency will present itself.

Other disasters, which may or may not be the result of natural phenomena, may include:

- transportation accidents on the interstate, other roadways, or the railroad which may involve hazardous materials or pose a threat to residents
- a release of hazardous or noxious chemicals from an industrial facility
- large fires involving multiple structures or large wooded or grassy areas
- loss of utility service to residents (particularly electricity or telephone communications) and
- acts of vandalism or terrorist aggression which may harm or endanger residents. These types of emergencies may be preventable through careful attention to details and preventative interventions (i.e., preventative maintenance, closure of highways during dangerous travel conditions, etc.)

However, these incidents are even less predictable than natural disasters.

The decision to implement this emergency plan shall be at the discretion of the Town Board Chairperson who is the Emergency Plan Manager (EPM). If the Town Board Chairperson is not available, the authority to implement this plan immediately passes to the next responsible Town Official in accordance with Town ordinances or procedures.

The Board Chairperson shall consider the following before initiating this plan:

- Does the incident or emergency condition exceed the normal emergency response services already available to, and provided by, the Township or other emergency response agencies?
- Does the incident or emergency condition represent a significant health or safety hazard to Town residents, or other persons in the Township, engaged in normal activities?
- How many residents or other people are, or may be, affected by the incident? How serious a threat does the incident or emergency condition represent?

If, in the opinion of the Town Board Chairperson, the protection of the residents' health and safety would be best served by implementing this plan, the Chairperson will implement the plan as described in the section entitled "Response Procedures."

Response Procedures

1) Notification procedures

As emergency conditions develop, people and Town officials will begin to seek help and assistance in dealing with their situation. Calls will be made to "911" by residents seeking assistance from the fire department, medical services or county sheriff. Sheriff's deputies will call in their assessment of conditions and make recommendations. Township employees may call the Town office and advise the clerk of hazardous conditions.

The fire chief (or senior on-duty officer), sheriff's dispatcher or Town clerk is instructed and authorized to contact the Town Board Chairperson and request a decision about implementing the plan. If in the opinion of the Town Chairperson, implementation of the plan is necessary or prudent, the Town Chairperson will implement the plan.

2) Emergency Plan Manager Responsibilities

The **first duty** of the Emergency Plan Manager is to gather information and make a careful assessment of the incident and existing conditions to determine the seriousness and extent of the incident. Clearly firsthand reports are important, but the Emergency Plan Manager is cautioned to use reliable and verifiable sources of information. It is not necessary for the Emergency Plan Manager to personally view the incident or damage.

The **second duty** of the Emergency Plan Manager is to establish a Command Post from which he or she will continue to make evaluations, maintain communications with field operations personnel and emergency response resources, and coordinate emergency response activities. The Manitowoc County Emergency Management Command Post shall be requested to be deployed to the location identified by the Emergency Plan Manager. The preferred **Command Post location will be the Town Office Building located at 615 Milwaukee St.** This will be the primary Operations Center for most responses. The **secondary, or back-up location**, for the Command Post will be at the **Collins Fire Department at 607 Milwaukee St** in Collins.

Based upon the information and reports received and continually being up-dated, the Emergency Plan Manager will:

- develop strategies (some of which are suggested in this plan)
- work with response personnel in developing tactical plans based upon the availability of personnel and resources,
- search for and find support for emergency personnel and
- continuously review and revise the strategies, actions and resources as necessary

3) **Emergency personnel communications**

The primary first response resource for the Town will be the Fire Department. Emergency personnel will be contacted by the Fire Chief(s) through the Fire Department paging system. The Emergency Plan Manager & Fire Chief(s) will cooperate in calling for personnel or additional personnel as necessary. Fire Department personnel will always remain under the direct command of the Fire Chief(s).

If additional response resources are necessary, the Emergency Plan Manager (or an identified assistant) will make the necessary contacts via telephone, cellular phone or radio with other emergency services, agencies, contractors or volunteers as identified in this plan.

4) **Residential Warnings, Public information & media**

Some emergencies will require, and are very effectively handled, by providing information and warnings to residents and other people in the Town who may be affected. This information or warning may advise the affected population to:

- Remain in the relative safety and security of their home or business
- Alert them as to certain precautionary actions which should be taken,
- What areas of the Town are most affected or likely to be affected
- What emergency response actions have been initiated to assist or protect them
- What evacuation procedures are or may be necessary
- What persons or agencies to contact with information, requests for assistance and how and when to contact them

Warnings, evacuation notices and information will only be issued by the Emergency Plan Manager or designated person(s). The methods of notifying residents may include the use of:

- Warning sirens (as in the event of tornadoes)
- Sheriff's deputies or authorized persons to use bullhorns, megaphones, telephones or door-to-door canvassing to directly inform residents of very immediate hazards or precautions to be taken
- Social media, radio or television bulletins providing information or instructions.

Requests for information from the media or residents regarding the extent of damage, injuries, risk or details of the response will be referred to the Emergency Plan Manager or the designated Information Officer. It will be the duty of the Information Officer to carefully assess the request and to offer only accurate, verified and sufficient information to answer the request. At no time, should the Information Officer give false or misleading information, information which may interfere or hinder response activities or endanger the person requesting information.

Emergency Response Operations

Emergency Response Operations is the planning and execution of tactical plans to achieve the overall objectives determined by the Emergency Plan Manager and his or her advisors. Clear, concise and careful communication is essential to ensure that the goals established in this plan and in strategic planning sessions are met. Following the procedures established in this plan and the instructions given by the Emergency Plan Manager or the various people given responsibility for the successful execution of this plan is very important. Cooperating with one another and working to resolve or stabilize the incident is the common goal of all concerned.

1) Command post procedures

The function of the command post is to provide a facility as a working headquarters for the Emergency Plan Manager. It must be equipped with adequate communications resources, facilities to accommodate long-term operations, and to be a fixed location where the central decision maker(s) can be found.

a. Chain of Command / Command Post Support Staff

The function of the chain of command is to clarify roles and levels of authority, to facilitate communications and to divide work or tasks among different response groups according to their skills and abilities.

b. Emergency Plan Manager

The Emergency Plan Manager is the chief emergency authority for the Town of Rockland and is authorized to direct the emergency response for the health, safety and protection of the Town residents. In the absence of professional emergency services, he or she is the Incident Commander (IC). All the authority and responsibility for the emergency response is vested in that individual. The IC/EPM may choose to assign and delegate authority to individuals to assist him or her in the completion of his or her duties or tasks. Any responsibility or duty not delegated to another competent individual remains the obligation and responsibility of the IC/EPM to fulfill.

c. Supporting the IC/EPM will be the following:

Fire Chief: The duties of the Fire Chief will be to direct and coordinate the efforts of the emergency response personnel in the field or on-site at the incident. The Fire Chief may designate Captains or Lieutenants to direct individual groups tasked with specific activities.

Clerk: The function of the Clerk and deputy clerk will be to keep a chronological record of the incident or emergency. It should include the receipt and dispersal of information relating to the incident, decisions made, actions taken, the results of decisions or actions and changes or modifications to procedures or the plan and the reasoning behind such adjustments.

The Clerk and deputy clerk will assist the IC/EPM locate, obtain and dispatch people, equipment and supplies required to resolve the incident. By the authority given to the IC/EPM by the Town Board and this plan, the person(s) delegated this responsibility are authorized to contract for additional services, equipment or materials as directed by the plan and IC/EPM.

d) Information / Media Officer (I/MO):

The Information / Media Officer has three key functions.

- First, to assist the IC/EPM in collecting and assessing incoming information. They can filter out duplicate reports and qualify the reliability and veracity of reports.
- The officer is also important in getting accurate, reliable information to residents and other agencies supporting the response.
- The I/MO will act as official liaison with any media personnel seeking to obtain information about the response and to provide accurate, verifiable reports authorized by the IC/EPM.

The Incident Commander / Emergency Plan Manager may create additional staff positions as deemed necessary. For example, clerical assistants, runners, kitchen services, sanitation services, etc.

e) Documentation procedures

The Incident Commander / Emergency Plan Manager is required to keep an accurate and reasonably detailed record of the incident / emergency. The purpose of the record is for review after the incident to ascertain the chronological order of information, events and decisions.

The record should also include records of expenditures authorized by the IC/EPM, summaries of the terms of any contractual arrangements, and claims for expenses or damages presented to the IC/EPM during the incident. The record can (and probably should) include sidebars explaining decisions, changes to strategies or planned actions.

The Incident Commander / Emergency Plan Manager is responsible for the content of the record. If the IC/EPM does not personally keep the record, they should verify the record, annotate it as necessary and initial each page of the record.

Emergency Response Responsibilities

1) Fire department responsibilities

The Fire Department will be the primary and first emergency response by the Township. Because the Fire Department already has an organizational structure and training for dealing with emergency situations, i.e. MABAS, it is an ideal and logical first response tool. It is expected that the department will utilize its organizational structure, training and experience under the leadership of its own officers to the maximum efficiency.

In some cases, it will be the Fire Department that is first on the scene and may make the call to activate this plan. The responsibility for the incident will then be transferred from the Fire Chief to the IC/EPM, but it is logical to assume that the Fire Department will remain authorized to lead emergency operations.

However, the Fire Department will always be tasked to fulfill its primary mission of fire protection to the Township residents and may withdraw partially or entirely to respond to fire emergencies. Notification to the IC/EPM is required. It will be a joint decision between the IC/EPM and Fire Chief if the Fire Department will withdraw from emergency actions for requests for mutual aid from other districts.

2) Constabulary responsibilities

The Constabulary of the Township is relatively small and insufficient to adequately cover a large incident or emergency action. However, the Chief Constable can and should act as a liaison with the Sheriff's Department and other law enforcement agencies in assessing police protection or control issues.

The Constable will oversee volunteers and may be authorized by the EPM/IC to "deputize" resident volunteers to assist with evacuations, traffic control, emergency shelter control, etc.

3) Emergency medical services responsibilities

Emergency Medical Services (EMS) are located within the Township and may also involve Valders Ambulance. The Incident Commander/Emergency Plan Manager may direct the EMS to coordinate with the Fire Chief as seems most appropriate.

4) Maintenance department responsibilities

The Maintenance department will be contacted by the EPM/IC or Fire Chief as necessary for assistance. They will make their resources and equipment available to the Town as seems most appropriate.

5) **Volunteer responder responsibilities**

Inevitably during major disasters and emergencies, people generously reach out to those affected and offer their assistance. Volunteer assistance will be greatly appreciated, but it needs to be organized and coordinated prior to an emergency.

Volunteers are urged to:

- Sign-up with the Township as a volunteer - giving the specific skills, services or equipment they can offer
- Report to the command post if called, and wait for an assignment that coordinates with the overall emergency response effort
- Follow the instructions given to them exactly (or report as to why they cannot complete their assignment safely),
- Remember that they are never to jeopardize their own safety or the safety of others in "heroic" efforts beyond their abilities or instructions.
- The Town cannot be responsible for reckless behavior.

Evacuation procedures

An order for evacuation can only be authorized by the IC/EPM. The order should specify what residents or what area should be evacuated. It should establish an estimated duration of the evacuation, if known. The order may be communicated to the residents by radio and television bulletins, telephone or radio communications, loudspeaker announcements from official vehicles in the area, or by direct personal contact and door to door canvassing by emergency response personnel. Only persons designated by the IC/EPM (i.e., Sheriff's deputies, Fire Department personnel, the Town Constable, or officially designated volunteers) are authorized to communicate the order to residents.

The exclusive authority given to the IC/EPM to order an evacuation does not preclude an on-scene officer directing an emergency operation from ordering a person to evacuate the immediate vicinity for safety reasons or to enable the emergency responders to work effectively and without interference. Emergency shelter locations to be used during an emergency will be determined by the Red Cross. The following locations are near to the Town and may be used.

Emergency shelter locations

Rockland Town Hall 615 Milwaukee St Collins, WI 54207 Paula Winkel 920-772-4055	Collins Fire Dept 607 Milwaukee St Collins, WI 54207 Keith Brandes 920-973-0569	St. Peter's Lutheran 2501 Collins Rd Collins, WI 54207 Brian Haese 920-905-1664
---	---	---

a) Transportation

Transportation to emergency shelters will be determined by the need for expediency and the potential hazards to be encountered during travel. Residents may be urged to self-evacuate in many cases. Special needs residents who require assistance in evacuation will be assisted by Emergency Medical Services, Fire Department personnel, or specially trained personnel available to transport as needed

b) Relocation information

The command post will be informed of the evacuation of any persons and the location of the shelters. The relocation information will only be released to family members or medical services and will be provided by the Incident Commander.

c) Extended evacuation procedures

In the event an evacuation period must be extended beyond a few hours, the American Red Cross or Salvation Army will attempt to arrange for food, cots, blankets, emergency clothing and sanitation services in suitable shelters for the duration of the emergency.

"Shelter-in-place" procedures

During certain types of emergencies, it is more practical and prudent to have residents remain in the safety of their homes. Such emergencies may include blizzards, heavy rains, extremely cold weather, or violent wind or electrical storms when travel may be dangerous. It may also include incidents involving releases of hazardous materials when exiting a well-sealed building may result in dangerous exposure to chemicals.

An order for in place sheltering can only be authorized by the IC/EPM. The order should specify what residents, or in what areas of the Town, people should remain in their residences or places of business. It should establish an estimated duration of the restriction on travel. The order may be communicated to the residents by radio, television bulletins, or social media. It may also include telephone or radio communications, loudspeaker announcements from official vehicles in the area, or by direct personal contact and door to door canvassing by emergency response personnel. Only persons designated by the Incident Commander (i.e., Sheriff's deputies, Fire Department personnel, the Town Constable, or officially designated volunteers) are authorized to communicate the order to residents.

The exclusive authority given to the IC/EPM to order restrictions on travel does not preclude an on-scene officer directing an emergency operation from ordering a person to evacuate the immediate vicinity for safety reasons or to enable the emergency responders to work effectively and without interference.

Special Needs Support

Residents who are dependent upon life support medical equipment or supplies, have temporary or permanent disabilities, or are limited in their ability to care for themselves will be supported by emergency response personnel who will, by the order of the IC/EPM, provide the necessary support (e.g., electrical service via generator, delivering medications or other life support supplies, delivering medical personnel, etc.) or evacuate the person to an appropriate location where medical services and care can be continued.

Note: Residents with these special needs must contact the IC/EPM and advise them of their special needs. It is preferable that the information be available to the IC/EPM prior to the emergency. This will enable the IC/EPM to consider these people as a priority in planning the response to the emergency.

Rescue operations

Certain conditions during emergencies such as flooding, fire, etc., may require residents be rescued from their homes. Rescues are often very dangerous and should not be attempted by anyone except trained and experienced persons. It is expected that the Fire Department personnel will direct and lead all or most rescue operations. Only the IC/EPM shall authorize rescue operations. The exclusive authority given to the IC/EPM to order rescues does not preclude an on-scene officer directing an emergency operation from ordering on-scene personnel from executing a rescue for life safety reasons.

a) Response personnel safety

It must be clearly understood that emergency response personnel safety is of paramount importance in all circumstances. While emergency actions may include an element of danger, the risk to response personnel should always be carefully considered and responders' lives and safety must never be jeopardized.

The IC/EPM is responsible for the safety of all emergency response personnel. The Incident Commander must weigh the risks, personal capabilities of response personnel and critical importance of the response actions before committing responders to any activity.

The on-scene officer at any response actions has the immediate responsibility for the responders under their supervision. The on-scene officer may cancel or withdraw from a proposed response action if the situation would impose an unreasonable risk to responding personnel.

Individual response personnel or volunteers are expected to realize the limits of their abilities, endurance and strength, and to advise their supervisor if they are unable or unwilling, for safety reasons, to enter or complete an assigned task.

b) Incident & Response Critique

The purpose of an incident and response critique is to identify the strengths and weaknesses of the existing emergency plan and the ability of the responding personnel to execute the plan effectively. It is not a time to point fingers and assign blame for shortcomings. The point is to develop a better plan, a more effective response and a more cohesive and cooperative team.

- i. Chronological review of information and actions
- ii. Critique of decisions and actions
- iii. Evaluation of performance
- iv. Recommendations for personnel and equipment changes
- v. Plan revisions

Testing and Review of the Emergency Management Plan

This plan is to be reviewed or tested, in whole or in part, at least once a year. The test may range from a full-scale, township-wide drill on a specific type of incident, to a table-top exercise using the plan as a template for response planning and decisions.

Emergency Response Personnel & Equipment Resource List

Township Personnel

A. Emergency Plan Manager(s) / Incident Commander(s)

1. Chairman — Rosalie Geiger
4227 Hickory Hills Rd.
Reedsville, WI 54230
920-901-3249
2. Supervisor 1 — Derek Genske
20956 Calumet St
Collins, WI 54207
920-875-0275
3. Supervisor 2 — Mike Havlinek
2224 County Rd W
Chilton, WI 53014
920-772-4270

Fire Chief & Assistant Chiefs Collins Volunteer Fire Department

1. Collins Chief — Keith Brandes
20955 County Rd JJ
Collins, WI 54207
920-973-0569
2. Collins Asst. Chief — Travis Benter
823 Milwaukee St
Collins, WI 54207
(920) 901-1128
3. Collins 2nd Asst. Chief – Max Maigatter
21012 Main St
Collins, WI 54207
(920) 323-6901

Constable Dan Benter
924 Landis St
Collins, WI 54207
920-901-7261

Clerk

1. Paula Winkel
615 Milwaukee St (Town Hall)
Collins, WI 54207
920-772-4055 (Town Hall); 920.509.1397 (M)
2. Laurie Miller (Deputy Clerk)
615 Milwaukee Street (Town Hall)
Collins, WI 54207
920-772-4055 (Town Hall); 920.716-4245 (M)

Fire Chief & Assistant Chiefs Reedsville Fire Department

1. Reedsville Chief – Jason Schuh
309 Sunset Dr
Reedsville, WI 54230
920-374-0312
2. Reedsville Asst. Chief – Wade Kasper
431 Elm St
Reedsville, WI 54230
920-973-6328
3. Reedsville 2nd Asst. Chief – Jason Maertz
505 South 5th St
Reedsville, WI 54230
920-378-4959

Information/Media Officer(s)

Primary:

a. Name:
Address:
Phone:

b. Name:
Address:
Phone:

Contracted Services or Equipment

Company/Service Name	Telephone Number
<u>Government</u>	
Town of Rockland Maintenance Building	920-772-4074
Rockland Road Superintendent Mobile – Keith Brandes	920-973-0569
Town of Rockland Sanitary District #1 – Chad Wendt	920-585-0687
Manitowoc County Sheriff Non-Emergency	911 920-683-4200
Manitowoc County Emergency Government (Rhonda Green)	920-683-4207
Manitowoc County Highway Department (Main Office)	920-683-4345
Valders Fire Department (Non-Emergency) Chief Christopher Dallas Cell	911 920-773-2316
Collins Volunteer Fire Department (Non-emergency) Chief Keith Brandes	911 920-973-0569
Collins Medical First Responders (Non-emergency) EMS President Jean Green	911 920-901-9713
Reedsville Fire Department (Non-emergency) Chief Jason Schuh	911 920-374-0312

City of Manitowoc Police Department
(Non-Emergency) 920-683-4500

City of Manitowoc Fire Department
(Non-Emergency) 920-686-6541

Area Search and Rescue K9 team

Charles Muench, K9 Handler 920-732-3615
2805 N County Rd S 920-901-5210
Reedsville, WI 54230

Utilities — Electric & Gas

Wisconsin Public Service 800-450-7240
EMERGENCY NUMBER 800-450-7299

Utilities — Telephone

NSight 920-758-2211
Cellcom 800-236-0055
TDS Telecom 920-775-9295

Emergency Service Organizations

American Red Cross (Audrey Reese) 920-246-9540
Salvation Army (Benny Benedict) 715-572-4147
jenny.moffit@usc.salvationarmy.org
jonathan.tamayo@usc.salvationarmy.org
samantha.tamayo@usc.salvationarmy.org
liz.pryor@usc.salvationarmy.org
benny.benedict@usc.salvationarmy.org

Hospitals with Emergency Capabilities

Holy Family Memorial — Manitowoc	920-320-2011
a) Kevin Kober	262-894-3982
b) Doug Johnsen	262-424-5302
Aurora Health Care — Two Rivers	920-794-5000
• Hannah Pfeffer - Emergency Management	920-973-3762
• Cheryl Stoeckigt-Parra - CNO/VP	920-980-6284
• Connie Hagenow EM/Nursing Mgr.	920-973-6628

Excavators/Landscapers with Heavy Equipment

• Ross Excavating	920-772-4968
• Hilltop Trucking – Tim Thor	920-946-5222
• Petersen Septic – David Petersen	920-323-2640
• Evenson Construction	920-775-4652
• Valders Stone & Marble	920-775-4151
• Madson Tiling and Excavating	920-758-2784
• Alfson Excavating	920-242-2999

Disposal Companies

• GFL Disposal	920-387-2631
• Waste Management	920-458-6030
• Pozorski Hauling	920-320-9055

Tow Truck/Wrecker/Crane Services

• Hi-Way 42 Garage & Towing LLC	920-758-2222
• Custer Street Towing	920-682-8024
• Jiggers Towing and Recovery	920-464-1555

Milk Haulers (for potable water)

- Leschke Milk Hauling
Scott/Sandy Leschke 920-758-3118
- Scott 920-323-4479
- Sandy 920-901-8600
- David Haupt Trucking 920-758- 2643
- Shane Wendt Trucking 920-323-9177

Media — Radio, Television & Newspapers

- Seehaver Media - Mark 920-323-4720
- WOMT 920-682-0351
- WCUB 920-683-6800
- WKTT — Cleveland 920-726-4477
- WFRV Channel 5 920-437-5411
 - Tip Line 800-236-5550
 - Fax 920-437-5769

- WGBA Channel 26 920-494-2626
- WBAY Channel 2 920-432-3331
- WLUK Channel 11 920-49-8711
- WFRV Channel 5 800-236-5550
- Herald-Times-Reporter 877-424-5044
- Valders Journal — Valders 920-775-4431

I. Volunteers

a. Name: Lynn Vallesky
Address: 826 Landis St, Collins, WI 54207
Phone: 920-205-3725

b. Name:
Address:
Phone:

c. Name:
Address:
Phone:

d. Name:
Address:
Phone:

e. Name:
Address:
Phone:

f. Name:
Address:
Phone:

Special Needs Residents

The following list of people have identified themselves or have been identified as having special needs which must be considered during an emergency or in planning actions such as evacuations or sheltering in place. Such needs may include medical conditions requiring nursing care or assistance, life support, or medications; business or household activities which cannot be left unattended; or the presence of children under the supervision of an adult in daycare, school or temporary care.

(The list should include names, addresses, telephone numbers and relevant needs information.)

a. Name:
Address:
Phone:
Needs:

b. Name:
Address:
Phone:
Needs:

c. Name:
Address:
Phone:
Needs:

d. Name:
Address:
Phone:
Needs:

e. Name:
Address:
Phone:
Needs: