

Town of Cheshire, MA
Water System Improvements-Depot Street, Railroad Street & Mill Hill Road
July 21, 2022

ADDENDUM 1 TO THE BID DOCUMENTS

To all Contractors, Bidders of Record on the Bid Proposal, this Addendum shall be considered part of the bid documents for the above-mentioned project as though it had been issued at the same time and shall be incorporated integrally therewith. Where provisions of the following supplementary data differ from those of the original bid documents, this addendum shall govern and take precedence. Bidders are hereby notified that they shall make any necessary adjustments in their estimates as a result of this Addendum. It will be construed that each bidder's proposal is submitted with full knowledge of all modifications and supplemental data specified herein.

ITEM 1 – Supplied Materials

Town of Cheshire will supply all pipe, fittings, joint restraints, hydrants, valves, corporation stops, curb stops, water service piping and any other water system components to install the system. The Contractor must supply all construction equipment, labor, and incidental items necessary to complete the installation, including but not limited to the following: concrete for thrust blocks, concrete bricks and blocks, steel bar, soils materials, crushed stone, flowable fill, topsoil, bituminous pavement, erosion controls, catch basin inlet protection, seed, mulch.

ITEM 2- Installation of piping

Installation of piping shall include all tasks necessary for the installation of the water mains, hydrants and services including but not limited to the following: pressure testing, disinfection, bacterial testing, excavation support, dewatering, bedding materials, and disposal of any unsuitable materials.

ITEM 3- Supply & Installation of pipe encasement

The supply and installation of polyethylene pipe encasement shall be bid as an alternate bid item on the included revised Bid Form in Section 14 on the form. This item is not included in the base bid amount.

ITEM 4- Unsecured PDF of bid package & Updated bid form

Attached find unsecured pdf of the bid package including drawings, and updated bid form, for this project.

ITEM 5- Drilling

Horizontal Directional Drilling is not required but may be conducted at the Contractor's discretion with approval by the Town of Cheshire Water Department. The specification for this work is included in the event the Contractor elects to incorporate this method.

ITEM 6- Cleaning & Lining of Water Mains

The specification section for Cleaning and Lining of Water Mains is not applicable at this time. For purposes of the current bidding process, please disregard this section.

ITEM 7- Mill Hill Road

The water main and services on Mill Hill Road are to be completed prior to any other portions of the project. The Mill Hill Road portion is to consist of the tri gate assembly at Mill Hill Road and Depot Street to the end of the line at the southerly end of Mill Hill Road.

ITEM 8- Supplies

Piping, fittings, hydrants and other components will be available for use by contractors at the Town of Cheshire Highway Garage at 6 Main Street, Cheshire, MA 01225. Contractors must retrieve any components from that location and distribute to the various work areas.

ITEM 9- Updated Site Plans

Attached please find updated site plans Revision 1 dated 7/21/2022. Bidders are requested to provide their bids based on the piping and water system improvements shown on the attached plans.

ITEM 10- Services

All services are to be 1" copper.

ITEM 11- Pavement Patch

Pavement patch is to be in accordance with the detail for Temporary Pavement Trench Patching. Permanent Patching within roadways is not required.

ITEM 12- Sidewalk Repair

Refer to the attached updated bid form. Note that the sidewalk repair is for Concrete walkways.

ITEM 13- Length of Pipe Runs

In regard to lengths of pipe runs, for the purposes of bidding, please bid amounts indicated on the updated forms. Payment will be established based on final lengths of piping installed.

ITEM 14- Gate Valves

The only planned new gate valves on the 8" main are located at the intersection of Depot Street and Mill Hill Road at the triple valve arrangement. A bid item for installation of a single valve is included in the form for information purposes if the Town wishes to include additional valves in the project.

ITEM 15- MBE and WBE Thresholds

MBE and WBE thresholds do not apply to this project. Please disregard any reference to required thresholds relating to either.

Contractor: _____

Firm Name: _____

CONTRACTOR FIRM SIGNATURE:

DATE: _____

Town of Cheshire, MA
Bid Sheet – Revised July 21, 2022

Depot Street, Railroad Street and Mill Hill Road, Water Line Replacement – July 2022

The Contractor shall insert prices for items both in words and in figures and is to show a total bid price. In the event of a discrepancy between the words and figures, the written words shall govern. In the event of an error in a bidders total bid amount, the corrected total bid obtained by the summation of the products of the unit prices multiplied by the respective quantities shall stand as the bidder’s total bid price.

The Contractor is required to review any related plans, conduct a full site review, and read all the provisions in the document before inserting prices, and is further advised to make his own determination as to the accuracy of the estimated quantities before inserting bid prices.

All workmanship and materials are to be consistent with AWWA, MADEP, and other applicable codes, laws and regulations.

Item No.	Brief Description Unit or Lump Sum Price (in both words and figures)	CONTRACT 1 - WATER MAIN IMPROVEMENTS	
		Estimated Quantity ⁽¹⁾ , Unit	Total in Figures
BASE BID			
1 WATER MAIN AND FITTINGS			
1a	Depot Street – install 8-inch ductile iron pipe and fittings, per linear foot (5' cover depth)		
		550 LF	\$
	<i>Unit Price, Dollars and Cents (words)</i>		
	\$ Unit Price in figures		
1b	Railroad Street – install 8-inch ductile iron pipe and fittings, per linear foot (5' cover depth)		
		410 LF	\$
	<i>Unit Price, Dollars and Cents (words)</i>		
	\$ Unit Price in figures		
1c	Mill Hill Road – install 8-inch ductile iron pipe and fittings, per linear foot (5' cover depth)		
		520 LF	\$
	<i>Unit Price, Dollars and Cents (words)</i>		
	\$ Unit Price in figures		
1d	Additional fittings, per pound		
		100 LB	\$
	<i>Unit Price, Dollars and Cents (words)</i>		
	\$ Unit Price in figures		
2 HYDRANTS AND VALVES			
2a	New hydrant assembly installed, per hydrant assembly		
		1 EA	\$
	<i>Unit Price, Dollars and Cents (words)</i>		
	\$ Unit Price in figures		

Item No.	Brief Description Unit or Lump Sum Price (in both words and figures)	CONTRACT 1 - WATER MAIN IMPROVEMENTS	
		Estimated Quantity ⁽¹⁾ , Unit	Total in Figures
2b	Existing Hydrant assembly, remove and reinstall		
		2 EA	\$
	<i>Unit Price, Dollars and Cents (words)</i>		
	\$ _____ Unit Price in figures		
2c	8-inch gate valves and box, per valve		
		1 EA	\$
	<i>Unit Price, Dollars and Cents (words)</i>		
	\$ _____ Unit Price in figures		
3 WATER SERVICE CONNECTIONS			
3a	1-inch corporation stops, per stop (labor)		
		23 EA	\$
	<i>Unit Price, Dollars and Cents (words)</i>		
	\$ _____ Unit Price in figures		
3b	1-inch curb stops, per stop (labor)		
		23 EA	\$
	<i>Unit Price, Dollars and Cents (words)</i>		
	\$ _____ Unit Price in figures		
3c	1-inch copper service line, per linear foot (labor)		
		800 LF	\$
	<i>Unit Price, Dollars and Cents (words)</i>		
	\$ _____ Unit Price in figures		
4 MAJOR WATER CONNECTIONS			
4a	3-way Intersection with 3 gate valves (Depot Street, Railroad Street and Mill Hill Road)		
		1 LS	\$
	<i>Unit Price, Dollars and Cents (words)</i>		
	\$ _____ Unit Price in figures		
4b	Connect new water main to existing gate valve (Railroad Street).		
		1 LS	\$
	<i>Unit Price, Dollars and Cents (words)</i>		
	\$ _____ Unit Price in figures		

Item No.	Brief Description Unit or Lump Sum Price (in both words and figures)	CONTRACT 1 - WATER MAIN IMPROVEMENTS	
		Estimated Quantity ⁽¹⁾ , Unit	Total in Figures
4c	Connection new water main to existing gate valve at Depot Street		
		1 LS	\$
	<i>Unit Price, Dollars and Cents (words)</i>		
	\$ Unit Price in figures		
5 ROCK EXCAVATION AND DISPOSAL			
5a	Rock excavation and disposal, per cubic yard		
		100 CY	\$
	<i>Unit Price, Dollars and Cents (words)</i>		
	\$ Unit Price in figures		
6 MISCELLANEOUS EARTHWORK			
6a	Changes in earthwork, per cubic yard		
		10 CY	\$
	<i>Unit Price, Dollars and Cents (words)</i>		
	\$ Unit Price in figures		
6b	Unsuitable Material, per cubic yard - removal		
		10 CY	\$
	<i>Unit Price, Dollars and Cents (words)</i>		
	\$ Unit Price in figures		
6c	Additional crushed stone, per cubic yard		
		10 CY	\$
	<i>Unit Price, Dollars and Cents (words)</i>		
	\$ Unit Price in figures		
6d	Test pits, per cubic yard		
		50 CY	\$
	<i>Unit Price, Dollars and Cents (words)</i>		
	\$ Unit Price in figures		
7 SURFACE RESTORATION			
7a	Loaming and seeding, per lump sum		
		1 LS	\$
	<i>Unit Price, Dollars and Cents (words)</i>		
	\$ Unit Price in figures		

Item No.	Brief Description Unit or Lump Sum Price (in both words and figures)	CONTRACT 1 - WATER MAIN IMPROVEMENTS	
		Estimated Quantity ⁽¹⁾ , Unit	Total in Figures
8 PAVEMENT REPLACEMENT			
8a	Temporary trench pavement, per linear foot		
		1848 LF	\$
	<i>Unit Price, Dollars and Cents (words)</i>		
	\$		
	Unit Price in figures		
8b	Additional Pavement per Ton		
		10 TON	\$
	<i>Unit Price, Dollars and Cents (words)</i>		
	\$		
	Unit Price in figures		
9 SIDEWALK CONSTRUCTION AND REPLACEMENT			
9a	Concrete sidewalk and ramps, per square foot		
		150 S.F.	\$
	<i>Unit Price, Dollars and Cents (words)</i>		
	\$		
	Unit Price in figures		
10 RESERVED			
10a	RESERVED – NO BID ITEM		
			\$000
	<i>Unit Price, Dollars and Cents (words)</i>		
	\$		
	Unit Price in figures		
11 DUST CONTROL			
11a	Calcium chloride, per pound		
		200 LB	\$
	<i>Unit Price, Dollars and Cents (words)</i>		
	\$		
	Unit Price in figures		
12 ENVIRONMENTAL PROTECTION			
12a	Silt fence, per linear foot		
		300 LF	\$
	<i>Unit Price, Dollars and Cents (words)</i>		
	\$		
	Unit Price in figures		
13 MOBILIZATION			
13a	Mobilization (not more than 5% of the total of all items), lump sum		
		1 LS	\$
	<i>Unit Price, Dollars and Cents (words)</i>		
	\$		
	Unit Price in figures		

14		ALTERNATE BID ITEMS	
14a	Supply and install polyethylene encapsulation		
		1700 LF	\$
	Unit Price, Dollars and Cents (words)		
	\$		
	Unit Price in figures		

The proposed contract price for the Base Bid, Items 1 through 13a is:	CONTRACT 1 - WATER MAIN IMPROVEMENTS	
		Total Bid in Figures
		Total Bid, Dollars and Cents (words)

DESCRIPTION OF WORK TASKS:

SECTION 1 - WATER MAIN AND FITTINGS - includes all labor and materials (ie: thrust blocks and similar) and tasks (ie: disinfection and pressure testing) required to complete the installation of the components indicated.

- 1a. Depot Street - 8-inch ductile iron pipe and fittings, per linear foot, labor only (5' cover depth)
- 1b. Railroad Street - 8-inch ductile iron pipe and fittings, per linear foot, labor only (5' cover depth)
- 1c. Mill Hill Road - 8-inch ductile iron pipe and fittings, per linear foot, labor only (5' cover depth)
- 1d. Additional fittings, per pound, labor only.

SECTION 2 - HYDRANTS AND VALVES – includes all labor and materials (ie: thrust blocks and similar) and tasks (ie: disinfection and pressure testing) required to complete the installation of the components indicated.

- 2a. New hydrant assembly, per hydrant assembly, labor and equipment only.
- 2b. Remove and reinstall existing hydrant.
- 2c. 8-inch gate valves and box, per valve, labor only

SECTION 3 - WATER SERVICE CONNECTIONS

- 3a. 1-inch corporation stops, per stop, labor only
- 3b. 1-inch curb stops, per stop, labor only
- 3c. 1-inch copper service line, per linear foot, labor only

SECTION 4 – MAJOR WATER CONNECTIONS - includes all labor and materials (ie: thrust blocks and similar) and tasks (ie: disinfection and pressure testing) required to complete the installation of the components indicated.

- 4a. 3-way Intersection with 3 gate valves (Depot Street, Railroad Street and Mill Hill Road)
- 4b. Railroad Street connection of new main to existing gate valve.
- 4c. Depot Street connection of new main to existing gate valve in vicinity of Prospect Street

SECTION 5 - ROCK EXCAVATION AND DISPOSAL

- 5a. Rock excavation and disposal, per cubic yard

SECTION 6 - MISCELLANEOUS EARTHWORK

- 6a. Changes in earthwork, per cubic yard
- 6b. Removal of unsuitable material, per cubic yard
- 6c. Additional crushed stone for backfill, per cubic yard
- 6d. Test pits per cubic yard

SECTION 7 - SURFACE RESTORATION

- 7a. Loaming and seeding, per lump sum

SECTION 8 – PAVEMENT REPLACEMENT

- 8a. Temporary trench pavement, per linear foot
- 8b. Additional pavement, per ton

SECTION 9 - SIDEWALK CONSTRUCTION AND REPLACEMENT

- 9a. Concrete sidewalk and ramps, per square foot.

SECTION 10 – RESERVED – NO BID ITEM

- 10a. RESERVED

SECTION 11 – DUST CONTROL

- 11a. Calcium chloride, per pound

SECTION 12 – ENVIRONMENTAL PROTECTION

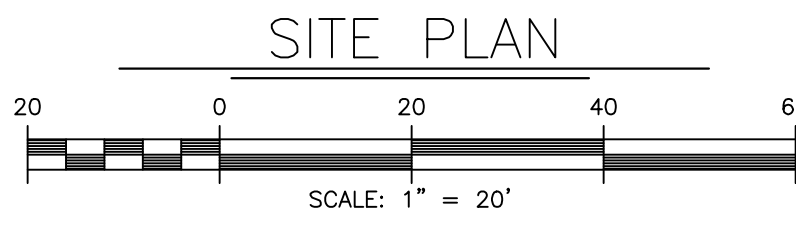
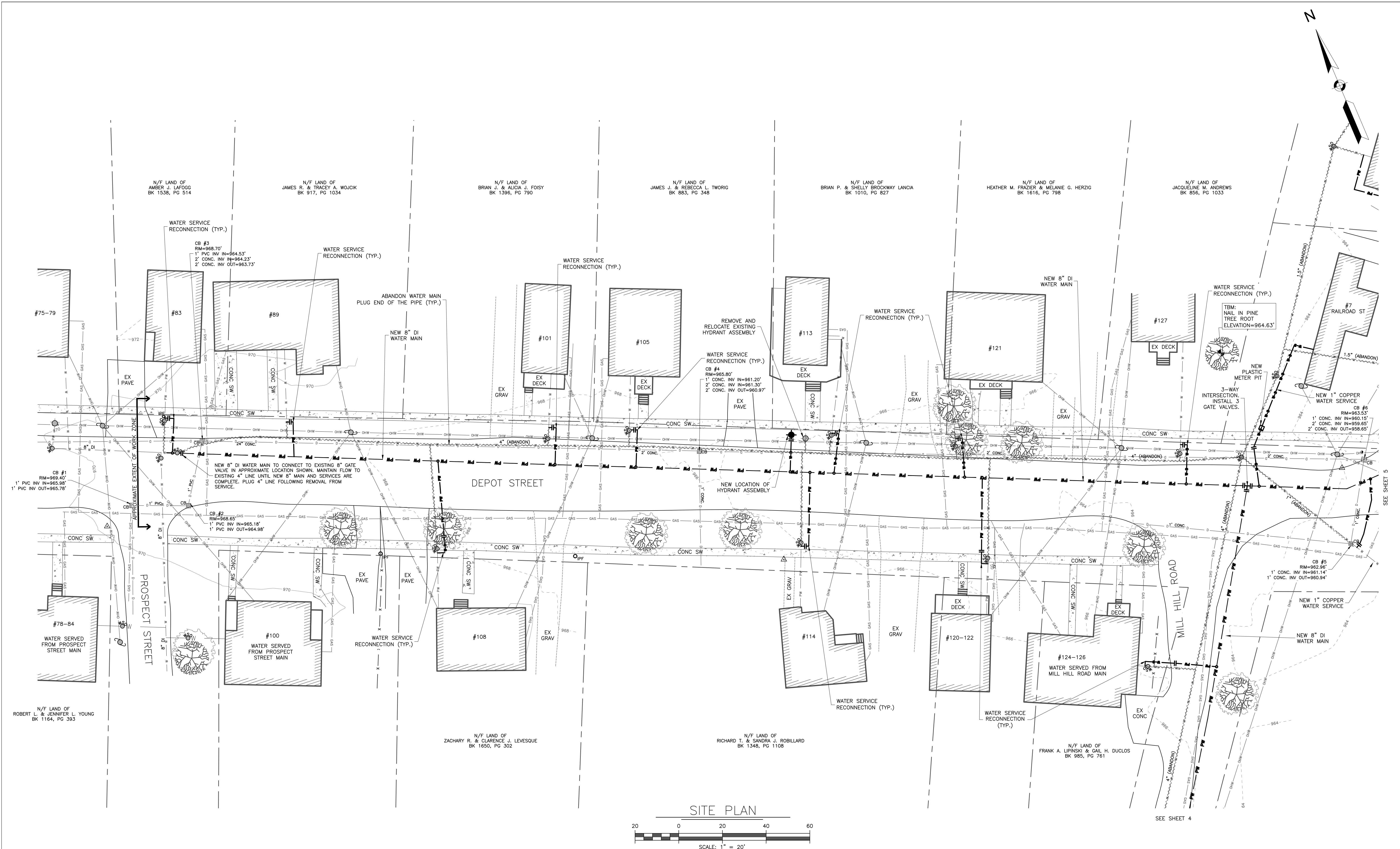
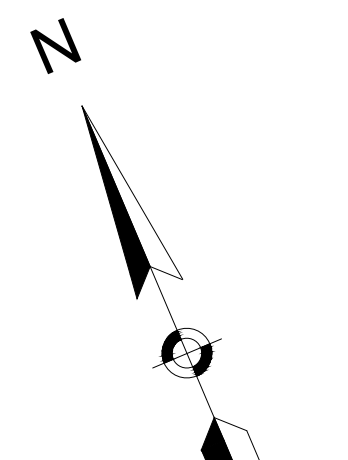
- Work Task 12a. Silt fence, per linear foot.

SECTION 13 - MOBILIZATION

- 13a. Mobilization (not more than 5% of the total of all items), lump sum

SECTION 14 – ALTERNATE BID ITEMS – Not included in base bid

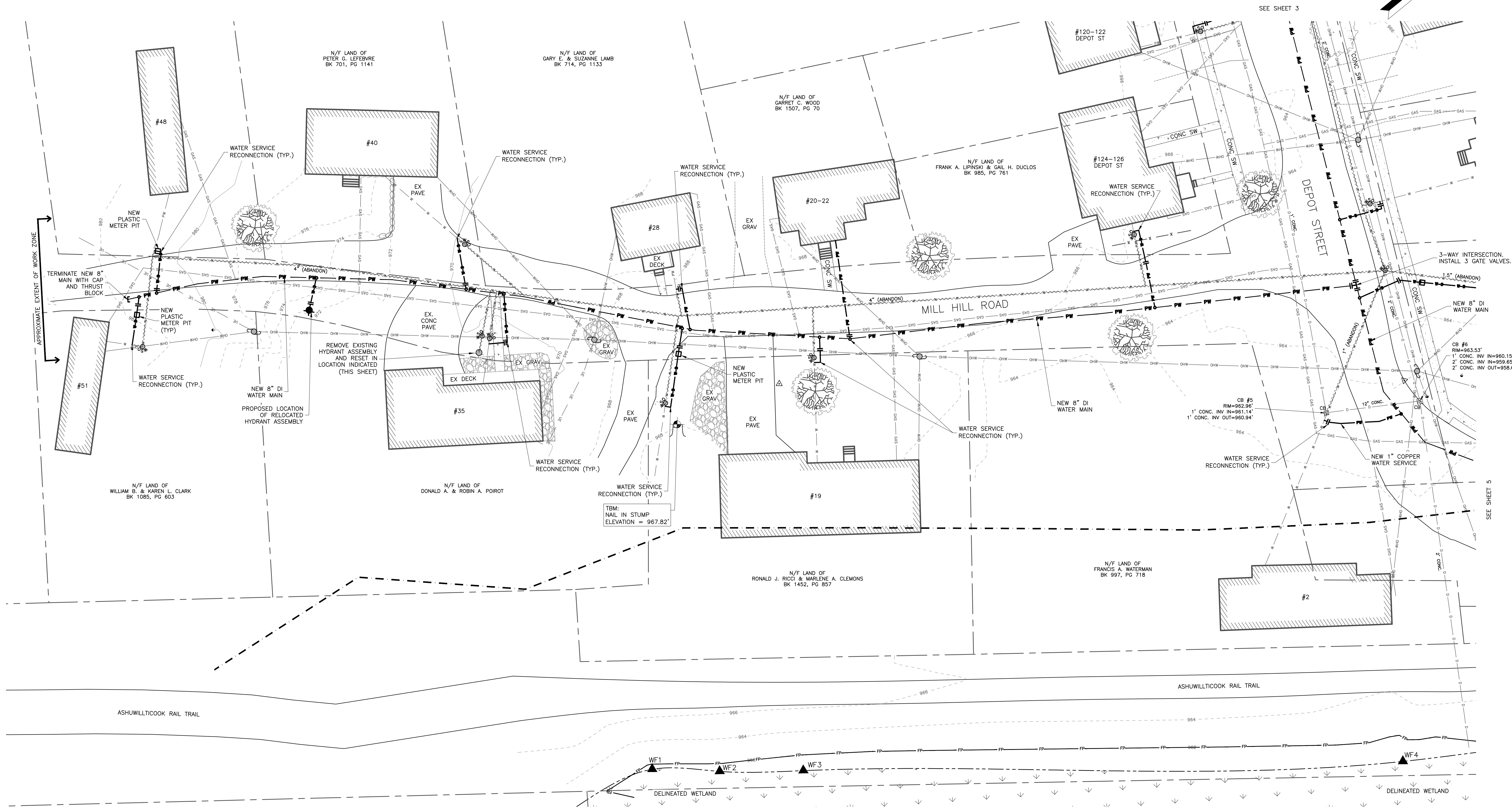
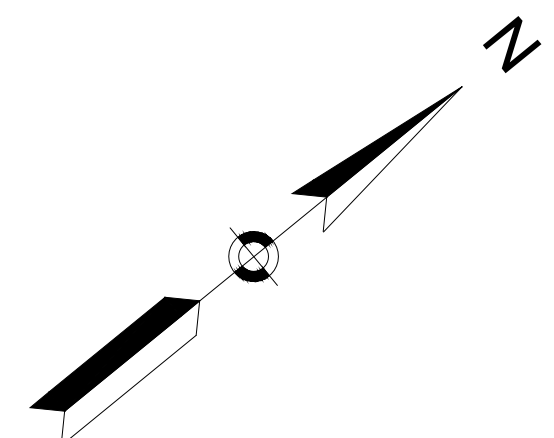
- 14a. Supply and install polyethylene pipe encapsulation for all ductile iron pipe and fittings.



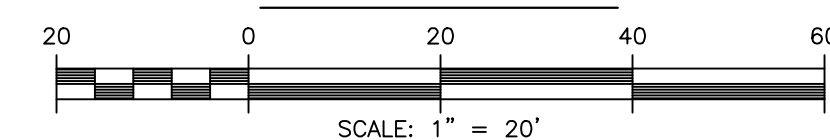
REV	DESCRIPTION	DATE
1	MISCELLANEOUS CLARIFICATIONS	7/21/22

DATE DRAWN: 07/10/2022	
DRAWN BY: SHN	
APPROVED BY: MSK	
SCALE: VARIES	
PROJECT DESCRIPTION: WATER MAIN INSTALL PLAN AT DEPOT STREET, RAILROAD STREET & MILL HILL ROAD FOR TOWN OF CHESHIRE, CHESHIRE, MA 01225	
DRAWING NUMBER	SHEET
19-02-02 CWD	S.3

THIS DRAWING IS THE PROPERTY OF BERKSHIRE ENGINEERING, INC. AND IS TO BE USED ONLY FOR THE PROJECT AND LOCATION SPECIFICALLY IDENTIFIED HEREON. ANY REUSE OR REPRODUCTION OF THIS DATA IS THE SOLE RESPONSIBILITY OF THE USER.



SITE PLAN



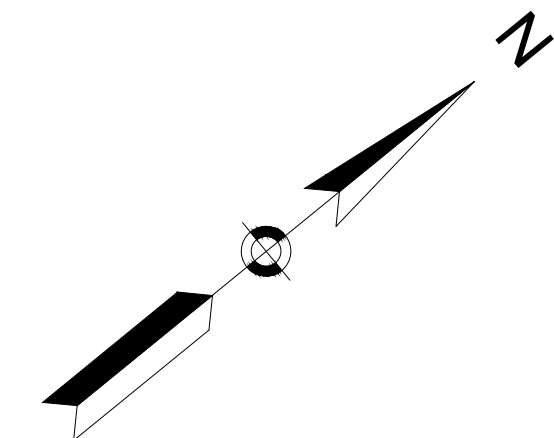
STA 1+14 RT - HYDRANT ASSEMBLY
1-8"x6" ANCHORING TEE, M.J. RESTRAINED, BLOCKED
1-6" GATE VALVE & BOX, M.J. RESTRAINED
1-6" NIPPLE, LENGTH AS REQUIRED
1-HYDRANT, BLOCKED
HYDRANT EXTENSIONS AS REQUIRED

REV	DESCRIPTION	DATE
1	MISC. LOCATIONS	7/21/22

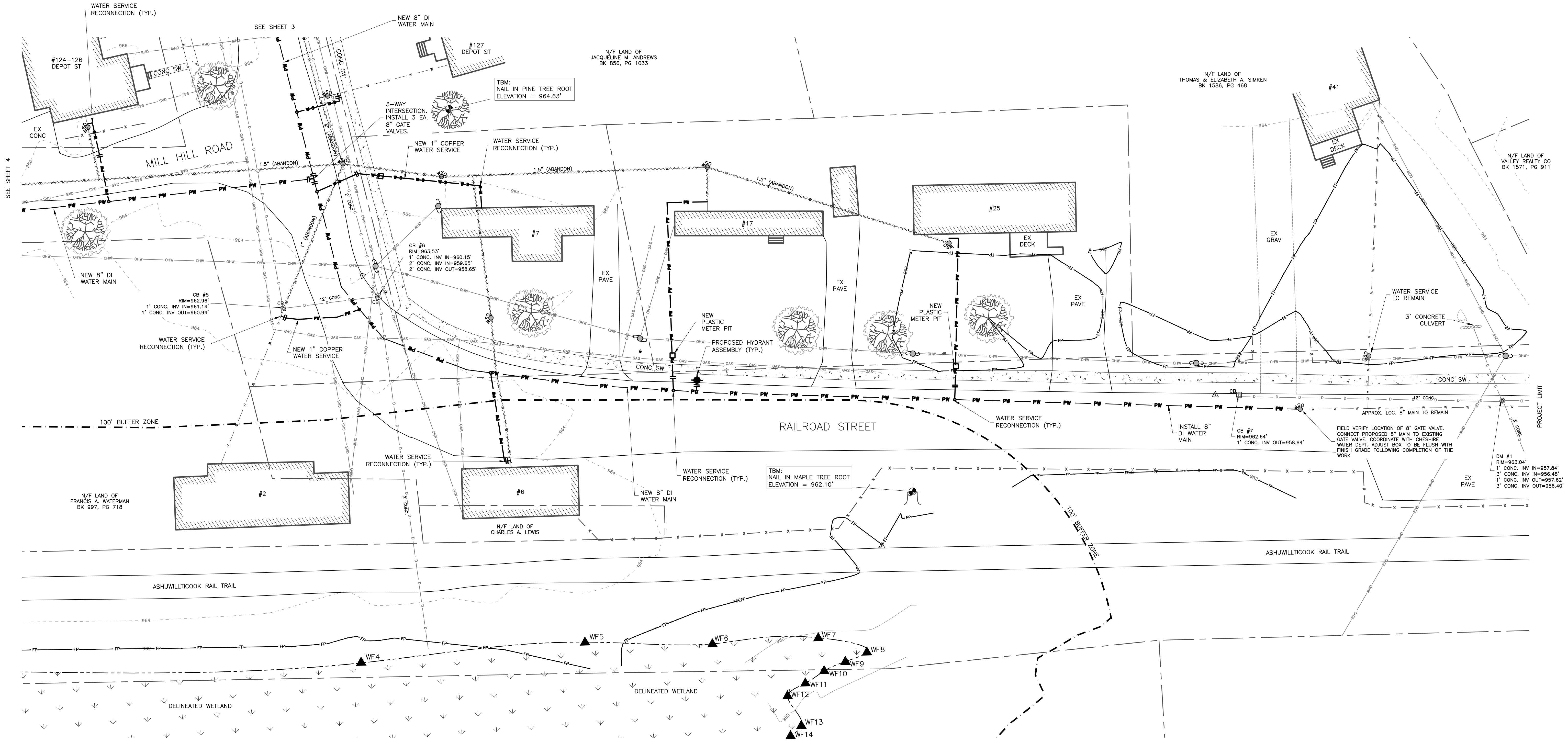
WATER MAIN INSTALL PLAN
PREPARED FOR: TOWN OF CHESHIRE
80 CHURCH STREET, CHESHIRE, MA 01225

WATER MAIN IMPROVEMENTS - MILL HILL ROAD PLAN
FOR DEPOT STREET, RAILROAD STREET & MILL HILL ROAD
CHESHIRE, MASSACHUSETTS 01225

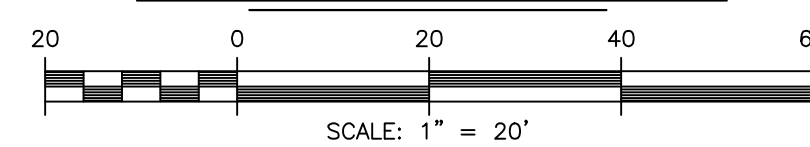
DATE DRAWN:	07/10/2022
DRAWN BY:	SHN
APPROVED BY:	MSK
SCALE:	VARIES
PROJECT DESCRIPTION:	WATER MAIN INSTALL PLAN AT DEPOT STREET, RAILROAD STREET & MILL HILL ROAD FOR TOWN OF CHESHIRE, MA 01225
DRAWING NUMBER	SHEET
19-02-02 CWD	S.4



STA 7+19 RT = HYDRANT ASSEMBLY
1-8"x4" ANCHORING TEE, WJ, RESTRAINED, BLOCKED
1-6" GATE VALVE & BOX, WJ, RESTRAINED
1-6" NIPPLE, LENGTH AS REQUIRED
1-HYDRANT, BLOCKED
HYDRANT EXTENSIONS AS REQUIRED



SITE PLAN



REV	DESCRIPTION	DATE
1	MISCELLANEOUS CLARIFICATIONS	7/21/22

WATER MAIN INSTALL PLAN
PREPARED FOR: TOWN OF CHESHIRE
80 CHURCH STREET, CHESHIRE, MA 01225

WATER MAIN IMPROVEMENTS - RAILROAD STREET PLAN (WEST)
FOR DEPOT STREET, RAILROAD STREET & MILL HILL ROAD
CHESHIRE, MASSACHUSETTS 01225

DATE DRAWN:	07/10/2022
DRAWN BY:	SHN
APPROVED BY:	MSK
SCALE:	VARIABLE
PROJECT DESCRIPTION:	WATER MAIN INSTALL PLAN AT DEPOT STREET, RAILROAD STREET & MILL HILL ROAD FOR TOWN OF CHESHIRE, CHESHIRE, MA 01225
DRAWING NUMBER	SHEET
19-02-02 CWD	S.5

A COPY OF THIS DRAWING IS MAINTAINED AT THE OFFICES OF BERKSHIRE ENGINEERING, INC. IN CHESHIRE, MASSACHUSETTS. THE USER ASSUMES ALL RESPONSIBILITY FOR THE DATA AND THE ACCURACY OF THIS DATA IS THE SOLE RESPONSIBILITY OF THE USER.