



March 24, 2025

Subject: Village of Sister Bay, Wisconsin  
Statement of Qualifications for Design and Construction Services Request  
Transportation Alternatives Program (TAP)  
V Sister Bay, Highway 57 Trail (Northwoods Drive north to Highway 42)  
Project ID: 4610-00-00/70

Dear DOT Eligible Engineering Consultants:

The Village of Sister Bay is in the process of selecting a consultant to engineer a proposed trail, and a consultant for construction administration services, for a Transportation Alternatives Program (TAP) project which was designed in 2024 by Stantec Consulting (see attached plan). The same firm may be selected to perform both the engineering and the construction management.

The Stantec plan designed is for a ten-foot-wide asphalt trail on the west side of Highway 57 from the intersection of Northwoods Drive north to State Highway 42 in the Village of Sister Bay, Door County, Wisconsin. The trail is approximately three-quarter miles in length. The trail will involve excavation in the highway right-of-way and on private land; base aggregate; asphalt trail; and if space allows, asphalt pads for benches or exercise stations.

The majority of this project is part of the Wisconsin Department of Transportation's Transportation Alternatives Program funding. The Village is selecting an engineering consultant to prepare engineered drawings for the trail, and a second contract to perform administration services in accordance with the WisDOT Local Program *Sponsor's Guide to Non-Traditional Transportation Implementation*. Ideally the construction phase would begin in the fall of 2025.

If you are interested in being considered for one or both contracts, please submit an electronic copy of your Statement of Qualifications to Julie Schmelzer, Village Administrator, at [julie.schmelzer@sisterbaywi.gov](mailto:julie.schmelzer@sisterbaywi.gov) by Friday, April 11, 2025 by 12:00 noon. It is the responsibility of the submitter to ensure their Statement of Qualifications was received by the village.

The Statement of Qualifications should include the following information, but is not limited to:

1. Credentials, qualifications and experience of key staff.
2. Workload capacity and availability of staff.

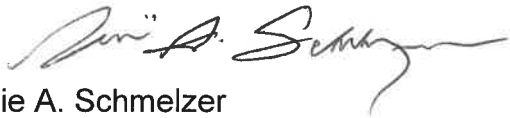
VILLAGE OF SISTER BAY  
2383 MAPLE DRIVE – PO BOX 769 – SISTER BAY, WI 54234 – (920) 854-4118  
[WWW.SISTERBAYWI.GOV](http://WWW.SISTERBAYWI.GOV)

3. Recently completed projects which correlate to the proposed project.
4. Provide any other pertinent information about your firm for consideration.

The construction services contract is subject to the Brooks Act, meaning the village is required to follow a Qualification Based Selection process and therefore bids, estimates or other cost information for the construction services shall *not* be included in the submittal. However, the engineering contract is not subject to the Brooks Act and therefore an estimated cost of service shall be included in the submittal.

To be eligible for consideration for both the engineering contract and the construction services contract, two separate submissions are required (because two separate contracts will be necessary).

Sincerely,

A handwritten signature in dark ink, appearing to read "Julie A. Schmelzer", with a stylized flourish at the end.

Julie A. Schmelzer  
Village Administrator

Att. Stantec Plan

April 11, 2025

**AECOM Proposal No.**  
OPP-04191922.2045

Julie Schmelzer  
Village Administrator  
Village of Sister Bay, Wisconsin  
[julie.schmelzer@sisterbaywi.gov](mailto:julie.schmelzer@sisterbaywi.gov)

**Statement of Qualifications for Construction Services Request  
Transportation Alternatives Program (TAP)  
Village of Sister Bay, Wisconsin  
Highway 57 Trail (Northwoods Drive to Highway 42)  
Project ID: 4610-00-00/70**

Dear Ms. Schmelzer,

AECOM Technical Services, Inc. (AECOM) is pleased to provide our proposal for the Highway 57 Trail. AECOM Construction Management - Construction Engineering and Inspection (CM/CEI) will provide experienced construction administrative staff to deliver your project from the notice to proceed to final payment, adhering to Wisconsin Department of Transportation (WisDOT) Local Program, TAP, and Village requirements the entire way. The following proposal describes our project understanding, scope of services, staff experience and past completed projects. This is your project. We will assist you in making it a success. The Village will have choices and options for consideration. AECOM will discuss options for available staff and propose alternatives for Village approval if schedules change.

## Project Understanding

This new Highway 57 Trail will run north from Northwoods Drive along the west side of Wisconsin Highway 42 for 4,500 feet connecting to an existing path on the south side of Wisconsin Highway 57. This path will protect and improve safety for pedestrians, cyclists, and the traveling public connecting to other nearby trails. The completed path will meander through both WisDOT and private right-of-way and consist of a 9-inch-thick base aggregate dense foundation, and a 2.5-inch thick by 10' wide paved asphalt surface with 2' shoulders; all complying with the Americans with Disability Act (ADA). Traffic control, clearing and grubbing, grading, concrete curb and gutter and sidewalk with ADA pedestrian ramps, culvert pipe(s), erosion control, utility coordination, and final restoration are anticipated with this project.

## Considerations Before Construction

To kick off the project, AECOM recommends holding a stakeholder meeting with Village staff to discuss and reach concurrence on the items in the CM/CEI contract and the construction contract. This includes the necessary components to prepare the project for success, establishing protocols and procedures and sharing expectations between AECOM and the Village. This meeting and others can be held virtually to help with economics. Options for the construction project can be discussed here as well, including schedules, timelines, and construction bid item options. With AECOM, your CM/CEI team is involved with the entire project providing you with solutions for both cost and time savings before construction starts, during construction, and after final completion.



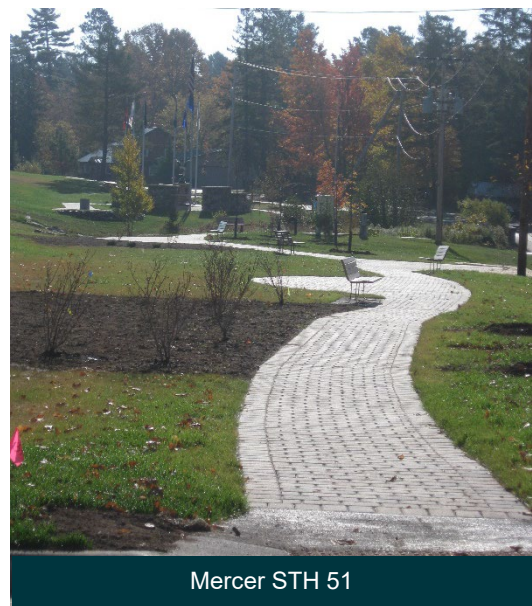
USH 45 - Land O'Lakes

Whether the Village chooses AECOM for both final design and construction, the AECOM CM/CEI staff will provide recommendations to designers through a constructability review prior to bidding. This review will: check major quantity calculations for project over or under runs to reduce contractor inflated pricing; the correct bid items are included to reduce change orders during construction; can the project be constructed as shown on the plans; and are their economical alternatives available to this design. This review will give your project a second independent set of eyes, a check of the plan, and options prior to bidding. We will work with the Village to schedule your project at the best time of the year to minimize delays, to fit your schedule-considering the "Tourist Season", interim completion dates if required for local festivals, and still allow enough time to complete the project economically by contractors.

## Construction

After the bids are opened, the design engineer validates signed contracts, bond and insurance requirements are correct and the notice of award has been sent, the construction phase of this project will begin. We will utilize Engineers Joint Contract Documents Committee (EJCDC) forms and have developed many project administration forms, similar to WisDOT forms, through many years of working with municipalities. We will follow WisDOT procedures and documentation guidelines to deliver your project. Some of the tasks include, but are not limited to:

- Provide grant administration support; confirming contractors are not debarred, check certified payrolls and Buy America requirements of all materials.
- Review all submittals requiring approval.
- Review and approve the Erosion Control Implementation Plan (ECIP).
- Provide before pictures and video of the project and adjacent properties. This will be the basis of existing vs. damage(s) caused during construction.
- Schedule, lead, record, and share minutes for the preconstruction meeting.
- Verify staking and utility markings to ensure there are no conflicts. If conflicts are present, we will contact designers with options to correct the conflict.
- Daily diaries per WisDOT will be maintained for personnel and equipment, site conditions, issues or conflicts, material and quantity verification, safety, and quality.
- AECOM staff have the experience to identify change orders with merit and offer solutions to mitigate the problem. Not all change orders require monetary adjustments. A time extension may be more acceptable than a cost increase, especially if additional time can be added to the contract before completion dates are established. There are also potential options to reduce construction costs with change orders.
- Maintain an Item Record Account (IRA) for all bid items and the measurements for payment to the contractor.
- We anticipate using EJCDC format for contract administration and are very familiar with it.
- Monitor field staking by the contractor for conformance to the plan elevations and grades.
- Provide all equipment required to validate Quality Verification conformance.
- Submit WisDOT ADA ramp compliance forms to the WisDOT agency, if required
- Approve or adjust contractor payment requests to engineer for payment.
- Weekly or bi-weekly construction coordination meetings will be held as needed and led by AECOM. Anything and everything related to the project will be discussed and recorded.



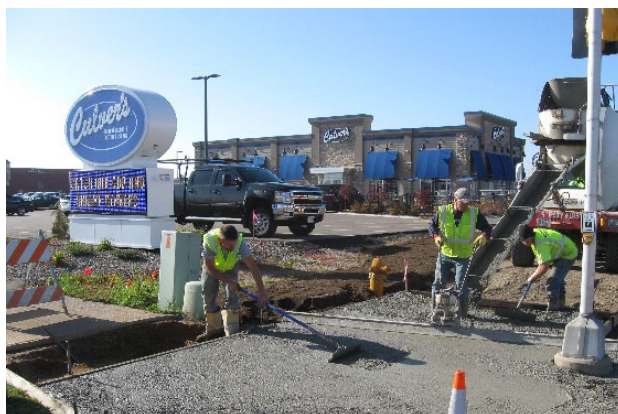


- Materials testing will be performed by WisDOT certified AECOM staff. AECOM will obtain all samples requiring testing including aggregates and concrete. AECOM can deliver or schedule pick up of samples to a third-party testing service. AECOM recommends that the actual testing, reporting, and costs of the third-party be the responsibility of the Village. This reduces any conflict of interest and mark-up costs. AECOM will provide any density testing of the asphalt path material required.
- Confirm Buy America requirements on all materials purchased for the project.
- AECOM will have one onsite project leader for the duration of the project. They will monitor, inspect, document, approve or reject non-conforming work, and act as the project representative for all Village and public inquiries. If the contractors will be working schedules in excess of 40 hours per week, the project leader will maximize on-site inspection times when work warrants, while minimizing overtime costs to the Village.
- All equipment required including nuclear density meters, concrete testing equipment, and dedicated on site GPS will be used to verify that materials are satisfactorily incorporated, and construction is placed in accordance with specifications. All equipment holds the current industry standard for required calibrations.
- Do you want to know the status of your project? You will receive, only with AECOM, Daily Updates-Electronic updates of the contractors onsite with a short description of activities performed, and a picture of the work.

## Post Construction

After the contractor has completed their work, but before final acceptance is granted, the CM/CEI staff, Village, and WisDOT will be invited to walk through the completed project and identify all outstanding items of work or those not meeting the contract documents to be included on the Final Punchlist. Final quantities will be compiled, reviewed and then supplied to the Contractor for their concurrence. If AECOM is selected as the designer and CM/CEI, then we can provide a final set of as-builts that will be sent electronically to the Village and WisDOT. If another firm is selected for the design, then our as-builts will be a markup of the IFC PDFs. A final review of all material records as well as a final review of all quantities, tickets, project documentation, and environmental considerations will be performed prior to sending the final payment request. All electronic records will be delivered to the Village.

We will assist with the grant application process to prepare one document for submission by the Village to WisDOT.

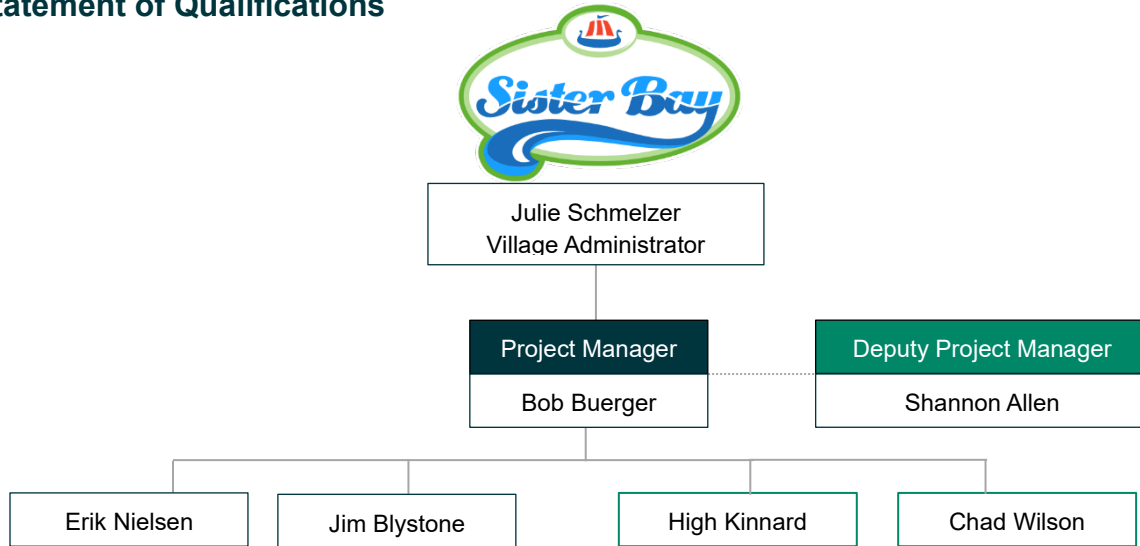


Plover Rd Mixed Use Path









USH 45 – Land O'Lakes

# Statement of Qualifications



## Task 1: Credentials, qualifications, experience of key staff

		Years of Experience	WisDOT PCC TECH I Concrete	WisDOT Nuc Density Tech I Asphalt	WisDOT Agg Tech I Aggregate Sampling	AMPP Bridge Coatings Insp.	PCI Prestress Girder	ACI Concrete Field Test Tech I	TMS Transportation Materials Sampling	FHWA-NHI BRIDGE Certified Safety Inspector In-Service
	Bob Buerger <i>WI CM/CEI Senior Manager</i>	38	●		●				●	
	Shannon Allen, PE <sup>1</sup> <i>WI Civil Manager</i>	14								
	James Blystone <i>WI Civil Technician III</i>	25	●	●	●					●
	Chad Wilson <i>WI Assistant Superintendent</i>	21	●	●	●			●		
	Erik Nielsen <i>WI Civil Technician III</i>	27	●	●	●	●	●	●	●	
	Hugh Kinnard <i>WI Environmental Scientist I</i>	15	●	●				●		

Notes: <sup>1</sup> Professional Engineer WI & FL

## Task 2: Workload capacity and availability of staff

AECOM proposes an experienced team, who has been involved with other successful Multi-Use-Path projects, to complete this project.



Staff	2025 % Available	2026 % Available
Bob Buerger	Fall 25%	Spring 100%
Shannon Allen	Fall 100%	Spring 100%
James Blystone	Fall 100%	Spring 100%
Chad Wilson	Fall 100%	Spring 100%
Erik Nielsen	Fall 25%	Spring 75%
Hugh Kinnard	Fall 100%	Spring 100%

Our 2025 availability was calculated for the day of submission of this Request. Construction schedules are ever changing. As mentioned earlier, we will propose staff available for your project and work with you to provide the best team for success. Bob is an experienced construction project manager, but for consistency, Shannon is also available to provide support (deputy PM) for consistency from the design. You have a say in your project. The needs of your project will dictate the staffing requirements. There are times when contractors may not be on site, and neither will we, unless required. We will monitor the contract and budgets to provide the highest quality, most economical project, and we meet your schedule need.


## Task 3: Recent Completed Projects

Project Title (Construction Projects)		County	Year	Approx. Length (ft)	ADA Requirements	Concrete Ramps	Surface	Bridge	Boardwalk
	Mercer Multi-Use-Path	Vilas	2016	18,000	Yes	Yes	Asphalt	Yes	Yes
	Plover Road Multi-Use-Path	Portage	2016	600	Yes	Yes	Asphalt	No	No
	Rib Mountain Multi-Use-Path	Marathon	2016	2,000	Yes	Yes	Asphalt	No	Yes

Project Title (Construction Projects)	County	Year	Approx. Length (ft)	ADA Requirements	Concrete Ramps	Surface	Bridge	Boardwalk
	Vilas	2022	200	Yes	Yes	Asphalt	No	No
	Marathon	2023/2024	5,200	Yes	Yes	Asphalt	No	No
	Portage	2015	800	Yes	No	Asphalt	No	No
	Vilas	2013	2,000	Yes	Yes	Asphalt	No	No

Project Title (Design Projects)	County	Services
	Outagamie	Topographic Survey, Development of conceptual and final issued for construction designs, upgrade site lighting, construct new multi-use path, preparation of permits, archeological study, provide bidding assistance, construction observation and documentation
	Outagamie	Topographic survey, bathymetric survey, shoreline evaluation, held meetings with stakeholders, preparation of conceptual designs



Project Title (Design Projects)	County	Services
 <p>Fox River Corridor Riverwalk</p>	Winnebago	Final concept planning, corridor easement/purchase negotiations, community involvement, site survey/CSM, bathymetric surveys, wetlands evaluation, existing conditions summary, riverwalk construction options, site grading design, Phase I and II Environmental Assessments, utility and infrastructure design, geotechnical/structural evaluation, soils management plan, grant applications, grant management, permit submittals, construction budget, design, bid and construction documents, construction management services

## Task 4: About AECOM

With AECOM you have the small town feel with the resources and support from a large corporation. Our staff pride themselves on quality projects delivered on time and on budget.

AECOM is the global infrastructure leader, committed to delivering a better world. As a trusted professional services firm powered by deep technical abilities, we solve our clients' complex challenges in water, environment, energy, transportation, and buildings. Our teams partner with public and private-sector clients to create innovative, sustainable, and resilient solutions throughout the project lifecycle – from advisory, planning, design and engineering to program and construction management. AECOM is a Fortune 500 firm that had revenue of US\$16.1 billion in fiscal year 2024. Learn more at [aecom.com](https://www.aecom.com).

## Summary

AECOM will complete a quality project in an efficient and cost-effective manner on schedule. We will assist with a constructability review, monitor all required construction activities, sample required materials, administer the contract, assist in contract closeout, and most importantly, keep you informed of daily progress.

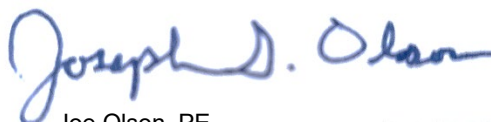
We appreciate this opportunity to present our proposal and remain fully available to provide any other information that you may require concerning these Construction Services. If you have any questions, please contact Bob Buerger at 715-340-4215 or [bob.buerger@aecom.com](mailto:bob.buerger@aecom.com).

Yours sincerely,

AECOM Technical Services, Inc.



Bob Buerger  
Project Manager



Joe Olson, PE  
Associate Vice President

# Resumes



## Robert Buerger, Jr.

### Construction Engineering Senior Manager

**Years of  
experience**  
38

**Education**  
Bachelor of Science, Industrial  
Technology/Building Construction  
University of Wisconsin - Stout, 1988

**Training**  
• HTCP Certified: PCCTEC-I, AGGTEC-I, TMS

Mr. Buerger has 38 years of experience in the construction industry with experience ranging from construction project management to inspection. He has extensive construction cost estimating and scheduling experience in urban, underground, utility and earthwork. Mr. Buerger has been responsible for project management, construction inspection, contract administration, staffing, evaluating subcontractors, equipment, and materials. His responsibilities include reviewing and processing construction claims and change orders, monitoring and maintaining construction cost records, materials, schedules, private utility progress and documenting day-to-day construction activities (daily diaries, inspection reports, equipment, submittals, quantities, and itemized records accounts), and project finals.

### Selected project experience

**Local, Village of Weston, Weston Avenue; Cam Phillip Road to CTH J (2023/24/25) Project** Leader for the \$13.3M, 4.03-mile project in the Village of Weston and is heavily traveled local road with residential, commercial, industrial park and heavy trucking along its length. Multiple field changes due to utilities not relocated and property agreements not acquired required everyone to work collectively to complete this project. Staging was followed and altered to meet these changes. The project is a complete urban reconstruct from a rural 2 lane roadway to a widened rural roadway with both inside and outside turn lanes, 10' multi-use path, and 6 storm water sedimentation ponds. The work included 16,074 LF of sanitary sewer, 19,927 LF of watermain, well point dewatering system, 3,629 LF storm sewer, marsh, rock, and common excavation, geogrid, breaker run, base aggregate dense, pulverize and relay, HMA, curb and gutter curb ramps, pavement marking, signing, and restoration. Constant GPS use by field staff added real value to the project. "Daily Updates" to keep in constant communication of progress, and issues as they arose. This project is expected to be completed on time and under budgets.

**STH 77 Mellen – Hurley; Ashland Co Line to Upson Lake Road (2023)** Project Leader for the \$4.06M, 7.1-mile rural highway project. 17 culvert pipe replacements, 3 culvert liners, transition cuts, 1" asphaltic surface milling and 2" HMA PWL paving, and guardrail. Work was completed using flagging operations and temporary signals. Extensive erosion control at all culvert replacements with temporary water diversions required, "Daily Updates" to keep in constant communication of progress, materials testing samples and issues as they arose.

**STH 70 CTH H to USH 45, WisDOT; Vilas County Wisconsin (2022) Project** Leader for the \$1.78M, 2.2-mile project, staged on a very heavily traveled urban highway through Eagle River during their busiest tourist season. Reconstructing inlets ADA sidewalk ramps, 9,000 curb and gutter, and 2" HMA. Coordination between field staff and contractors and subs helped complete this project ahead of time and under budget.

**USH 45 Chain O Lakes Road to Michigan State Line, WisDOT; Vilas County Wisconsin (2022)** Project Leader for the \$3.77M, 15.1-mile rural highway project between Eagle River and Land O Lakes. New curb and gutter, Multi-Use-Path, culvert liners, 2" milling and 2" HMA PWL. Constant communication with the Department ensured sampling, testing, and posted results were on time.

**STH 70 USH 45 to Divide Road, WisDOT; Vilas and Forest Counties, Wisconsin (2021)** Project Leader for \$2.8M project on this 12.7-mile, heavily traveled rural highway just east of Eagle River. Two new culverts and many curb and gutter replacements, 2" HMA PWL. Daily updates kept all parties informed of progress and the current status of material sampling and testing.

**STH 139 Fay Lake Road to Michigan State Line, WisDOT; Florence County, Wisconsin (2020 – 2021)** Project Leader for the \$2.47M project on the 9.15-mile rural highway between Long Lake and Iron River WI. 13 new culverts, milling and 2" HMA PWL. This project started in the fall of 2020 with culverts until the weather stopped, work was resumed and completed in the spring of 2021.

**USH 2 Ashland to Saxon, WisDOT; Iron County, Wisconsin (2020)** Assistant Project Leader for \$900k project including three culvert replacements, grading and intricate ditch and bank stabilization utilizing riprap. The culverts included a 30" with a liner, a 30" with all existing concrete joints chemically grout injected and a liner, and a 36" jack and bore that was changed at the contractor's request to a 48" Tunnel Bore Machine. Shoulder widening and drums were used to construct this project. Field staff worked with WisDOT and contractors to maximize the improvements. Daily updates kept many WisDOT staff informed of daily operations.

**STH 70, Eagle River to Tipler, WisDOT; Forest County, Wisconsin (2020)** Project Leader for \$2.2M, 7.5-mile milling and paving rehabilitation project using PWL for HMA paving. 11 new culverts were installed using staging, temporary widenings, and transition cuts. One large culvert 75" X 112" required extensive virtual coordination and between multiple agencies including WisDOT, WDNR and US Fish and Wildlife service. With NO cell coverage daily updates kept constant communication between field staff and WisDOT materials staff for the timely PWL testing, sampling, and reporting.

**City of Wausau, S. 1st Ave, WisDOT; Marathon County Wisconsin (2019)** Project Leader for a \$5.4M, 0.75-mile complete urban reconstruction project. Worked closely with WisDOT, City officials, and contractors to complete the project. Work included a 500' sheet piling wall, complete deep sanitary sewer system, watermain and storm sewer replacements, concrete pavement, ADA sidewalk, street lighting, and restoration. Major changes including sheet pile conflicts, differing site conditions, nonpublic utility delays and EBS were addressed in a timely manner to keep this project on schedule. Field staff also were positioned among several local projects to improve efficiency for the client.

**STH 13, Prentice to Park Falls, WisDOT; Price County Wisconsin (2018)** Project leader for a \$3.5M, 14.4-mile milling and paving rehabilitation project. Worked closely with county officials and contractors to complete 3 staged single, double, and triple culvert replacements during a flood prone season. Work was completed within completion dates. Work included milling and paving asphaltic pavement, culverts, traffic control, rumble strips and signing. Field staff communicated daily and worked closely with WisDOT staff with Daily Updates for timely materials testing.

**STH 77, Hurley to Mellen, WisDOT; Iron County Wisconsin (2017)** Project leader for a \$2.4M project, including 11.4 miles within six individual urban communities and rural sections in-between for milling and paving rehabilitation. Worked closely with town and county officials and contractors to increase considerable additional replacements and permitting work to be completed within completion dates. Work included milling and paving asphaltic pavement, ADA replacement of sidewalks and curb ramps in each town, improvements to an aging storm system, culverts, traffic control, and signing. Identified additional work required and negotiated and executed fast Contract Modifications to minimize costs and delays to the construction schedule.

**Northern Highlands Multi-Use Trail, WisDOT; Mercer, Wisconsin (2016)** Assistant project leader for \$880k project constructing 3.4 miles of new trail in southern Iron County. Responsible for erosion control inspections and weekly meetings documentation. Mentored staff for the nontraditional DOT project with local oversight.

**Local, Village of Plover, Plover Road/CTH B Multi Use Path (MUP), Portage County, Wisconsin (2016)** Project Leader for \$30K MUP along the Villages most traveled roadway. This project was fast tracked to complete the MUP using shoulder closures to construct the 600' MUP. Hydrant adjustments, mini storm system, and ADA sidewalk ramps were included. The project was completed on time and on budget.





## Shannon Allen, PE

### Civil Engineer

**Years of  
experience**  
14

**Education**  
BaArchScie, Civil Engineering, University  
of Wisconsin-Platteville

**Training**  
OSHA 8-Hour Confined Space  
Operations Entry/Attendant Training

**Registrations**  
• Professional Engineer, WI, FL

Ms. Allen is a civil engineer and project manager in Wisconsin and has gained experience in a variety of geotechnical, hydro dam, industrial and municipal solid waste, civil site design, and environmental permitting projects.

Civil site design project involvement includes developing permit and construction level plan sets for project sites such as landfills, coal combustion residual (CCR) impoundments, parking lots, trail systems, and exterior civil works for building developments. Plans typically include erosion control, demolition, storm sewer, sanitary sewer, and water main system, grading and paving, and restoration and landscaping plans. Projects include the design of storm water treatment systems such as biofilters and permeable pavement. Experienced in preparing local, state, and federal permitting approval applications.

### Selected project experience

**City of Appleton, Lutz Park Riverwalk, Appleton, Wisconsin.** Project Manager and design engineer for multi-use trail system within Lutz Park located along the Fox River. Project plans were taken from conceptual level to issued for construction level designs. Design included shoreline remediation, modifications to an existing fishing platform, relocation of a kayak launch, updates to the lighting system along an existing trail, and design of a new multi-use path. During construction, I participated in construction meetings, reviewed submittals, responded to Requests for Information (RFIs), and reviewed contractor pay applications. Construction is currently ongoing anticipated to be completed in summer 2025.

**City of Oshkosh, Pioneer Riverwalk East-West Segment, Oshkosh, Wisconsin.** Project manager and civil engineer of record for the design of the Pioneer Riverwalk trail east of Main Street and west of the rail road tracks along the former Pioneer Drive in Oshkosh, Wisconsin. Design plans, project specifications, and permitting documents were prepared. During construction, I participated in construction meetings, reviewed submittals, responded to Requests for Information (RFIs), and reviewed contractor pay applications. Following construction, a documentation report including record drawings were prepared.

**City of Oshkosh, Lakeshore Riverwalk, Oshkosh, Wisconsin.** Project manager and civil engineer of record for the design of the Lakeshore Riverwalk trail along Lake Butte Des Morts in Oshkosh, Wisconsin. Design plans, project specifications, permitting documents, and construction documentation report were prepared. During construction, I participated in construction meetings, reviewed submittals, responded to Requests for Information (RFIs), and reviewed contractor pay applications. Following construction, a documentation report including record drawings were prepared.

**City of Appleton, Peabody Park Riverwalk, Appleton, Wisconsin.** Design engineer for Riverwalk trail system. Conceptual and 30% level designs were developed for cost estimating purposes. 3D rendering showing design elements was developed as well.

**City of Wausau, Riverwalk Development, Wausau, Wisconsin.** Prepared Chapter 30 permits for installation of a new sheetpile wall and rip rap shoreline protection for the Riverwalk Development project.

**City of Manitowoc, Riverwalk Design and Engineering Study, Manitowoc, Wisconsin.** Performed slope stability analyses and developed alternative conceptual designs to address slope stability concerns for the Riverwalk development.

**City of Oshkosh, Boatworks Restroom & Parking, Oshkosh, Wisconsin.** Designed a parking lot on a vacant lot to access the City of Oshkosh Riverwalk system and ADA Kayak and Canoe Launch. The project also included the construction of a Restroom Facility. The site plans were developed in accordance with City of Oshkosh Site Plan Review and were approved through Common Council. Storm water management features including a biofilter were incorporated to achieve Wisconsin Department of Natural Resources and City of Oshkosh requirements for total suspended solid reduction. Project plans, specification, and bidding documents were also developed.

**City of Oshkosh, South Park Parking Lot, Oshkosh, Wisconsin.** Developed plans for the reconstruction of a parking lot located within the City's South Park. The design accommodated an existing one-story pavilion located within the parking lot and a handicap accessible children's playground, picnic areas, and walking trails adjacent to the parking lot. Stormwater management was handled as part of a larger lagoon retrofit project just south of the parking lot.

**City of Oshkosh, Senior Center Parking Lot, Oshkosh, Wisconsin.** Developed plans for the reconstruction of two existing parking lots (north and south) for a multi-use facility for a Senior's Center, public boat launch, Riverwalk trail head, and bus stop. Geotechnical soil borings were performed and the soil was analyzed for geotechnical parameters and environmental impacts. The south parking lot incorporated permeable pavement and the north lot incorporated biofilters for storm water management. In addition, a new storm outfall was installed to the Fox River as part of a larger watershed project. Permitting consisted of a WDNR Individual Permit for the outfall, WDNR NOI, Stormwater Management and Erosion Control Plan, City of Oshkosh Site Plan Review, Plan Commission amendment, Plumbing Plan Review, and Temporary Sanitary Discharge. During construction, excavated material was handled as solid waste and water was discharged to the sanitary sewer due to environmental impacts. Parking lot construction was phased to maintain access to the Senior Center throughout construction.

**City of Oshkosh, Riverside Parking Lot, Oshkosh, Wisconsin.** Developed a phasing design which incorporated a grading and storm sewer plan for Phase I and final build out. Analyzed the storm sewer system with HydroCAD in accordance with city codes. Two bioretention ponds were designed with RECARGA modeling and WinSLAMM. Plan sets were created in AutoCAD Civil 3D for Phases I and II construction. Project specifications and bid documents were developed. Stormwater management and erosion control plans were submitted to the city. A notice of intent was submitted to the Wisconsin Department of Natural Resources. Assistant project manager during both phases of project construction responsible for reviewing contractor submittals, attending weekly progress meetings, adjusting the design based on construction challenges, and providing communication and coordination with adjacent property owners.

**Georgia Pacific, Project Cinco, Green Bay, Wisconsin.** Lead civil engineer responsible for overall civil site design of new building expansion. Responsible for permit preparation and co-ordination with regulatory agencies. Reviewed and coordinated with various AECOM design disciplines including stormwater, sanitary, process water, fire protection, electrical, geotechnical, environmental, and structural. Also coordinated designs with the design-build partners (designers and contractors). Engineer of record for traffic control, erosion control, demolition, grading, and landscaping related designs. During construction, I participated in construction meetings, reviewed submittals, and responded to Requests for Information (RFIs).

**Georgia-Pacific Consumer Products LP, Project Cuatro - Balance of Plant Design, Palatka, Florida.** Developed the site plan for a building expansion totaling approximately 500,000 square feet. Involved with developing plan sets for the environmental resource permit, construction general permit, dewatering approval, and development review committee required by the state and county as well as construction packages related to ground improvements and site access/site preparation. Project included coordinating conflicts between various utilities including storm sewer, combined storm and sanitary sewer, fire protection, effluent force main, fiber optic, electric, and natural gas. Vehicle turn analysis was determined for semi-truck trailer parking, semi-truck movements at loading docks, and vehicle movements throughout the site for emergency vehicles, waste pick up vehicles, and semi-trucks. Attended construction meetings, reviewed contractor submittals, and requests for information (RFIs) during construction. Provided design changes as required during construction as a result of RFIs, changing field conditions, or client requests. Prepared record drawings and permit close out documents following construction.

## James Blystone

### Engineering Technician III

**Years of  
experience**  
25**Education**  
AS, Civil Engineering,  
Mid-State Technical  
College, 2000**Registrations/Certifications**

- Level 1 Portland Cement Concrete Technician II
- Nuclear Density Technician I Certification
- Transportation Materials Sampling
- FHWA-NHI Certified Safety Inspection of In-Service Bridges

Mr. Blystone is a Civil Engineer Technician III in the Stevens Point, WI office. Jim has 25 years of experience, 20 with Wisconsin Department of Transportation (WisDOT) Southeast Region (SER), 5 with the City of Wisconsin Rapids, and with AECOM starting in 2024. Jim's experience in design, survey, and construction inspection has led him to serve as a well-balanced project leader for WisDOT and City of Wisconsin Rapids on a variety of transportation and utility projects.

His experience includes structure replacements/rehabilitations, full reconstructions, roadway maintenance projects, roadway grading, marsh excavation, HMA paving, PWL, concrete paving, milling, pulverizing, traffic signal installation, curb and gutter, ADA concrete sidewalk/curb ramp, water main, sanitary sewer and storm sewer installation, underground boring, crack sealing, chip sealing, retaining walls, structure reinforcement, pavement marking and signing. Jim has experience with survey, construction administration, pre-construction and weekly meetings, pay requests, creating/justifying change orders, project closeout and quality verification, utility coordination, and material sampling/testing. Jim has design and CADD experience from obtaining the initial field topographical survey, importing into CADD, developing plans including roadways, utilities, lighting, details, pavement markings, signing, and miscellaneous quantities.

### Selected project experience

**9th Street Wisconsin Rapids (2024)** Project engineer for a five city block full urban reconstruction including removals of topsoil, trees, asphalt and concrete items, removals and installation of water, storm and sanitary structures and lines including services to residents and businesses, setting survey line and grade points for structures, curb and gutter, stationing, grade and sub grade. Inspection, measurement and payment of all items, utility coordination, contractor scheduling, weekly updates, communication with all local officials, business and homeowners, scheduling of traffic control, erosion control.

**Wylie Street Wisconsin Rapids Design (2023) Project** design and development including, collection, download and import into AutoCAD C3D, drafting/design of plan and details, estimate of quantities, engineer's estimate, bid-letting documents and mailings, construction of TLE maps and documents, letters to homeowners, utility and pre-con meetings.

**Oak Street Wisconsin Rapids (2023)** Lead surveyor and project engineer for an eleven city block full urban reconstruction. Initial survey included: road profile, utilities, curb lines, topography, sidewalk, approaches, property and 40 corners and all related city and state property.

Construction included: all removals and installation of water, storm and sanitary structures and all lateral lines to residents and businesses, setting survey line and grade points for structures, stationing, grade and sub grade. asphalt paving and placement of concrete items including setting horizontal and vertical control for stringless paving Inspection, measurement and payment of all items, utility coordination, contractor scheduling, weekly updates, and communication with all local officials, business and homeowners, and stringless concrete curb and gutter.

**Wisconsin River Bike Path – Wisconsin Rapids (2022)** Lead Surveyor. Survey consisted of a 0.9-mile section of land from the STH 13/73 expressway bridge to Hanson Park from the Wisconsin River edge to and including parts of STH 73. Initial survey included: all sanitary and storm items, topography, trees and flora, existing bike path, underground utilities power, light poles, curb and gutter, walking bridge and associated items. Export and delivery of data to CAD.

**15th Street Wisconsin Rapids (2021) Design Project** design and development including, drafting/design of plan and details using AutoCAD C3D, detailed estimate of all asphalt, concrete, and underground quantities, cost estimates, letters to contractors, bid-letting documents and mailings, construction of TLE maps and documents, letters to homeowners, utility and pre-con meetings.

**Various Projects WISDOT (2000-2020) Lake Delton** concrete pre-stressed single span 38'; Wisconsin River Bridges Portage WI IH-39 6 structures with multi-span land, water, and railroad; Waunakee STH 19 interchange box culvert 10' X10' X 60' poured in place, sheet piling and reinforcing. Plan Production using MicroStation, Auto CAD, C3D, Auto Turn, and various design software. Design of intersections, round-a-bouts, signing, pavement marking, detour, lighting, erosion control and highway designs. Utility and Plat coordination, drafting of special details, miscellaneous quantities, sequence of operations, cable routing, profiles and cross sections.

**1161-02-04 Wisconsin IH 39/ STH 16 Interchange Area (2018)** Project leader for STH 16 Portage – Wisconsin Dells. Work included construction of a two-lane roundabout with truck apron, full and partial depth milling, on/off ramp replacement, storm sewer and culvert pipe installation, erosion control, landscaping pavement marking, Type I and II sign installation, construction of a sign bridge, highway lighting, beam guard and E.A.T. installations, sidewalk, ADA pedestrian ramps and safety Islands, coordination with state and local officials, weekly project and public meetings.

**5105-00-61 Various Highways – SW Region (2017)** Project Leader for a multi-county asphalt rehabilitation/preservation project. Work consisted of crack routing and bituminous sealing throughout the Southwest region, including inspection, traffic control, signing, daily diaries, coordination with multiple state and local agencies, quantity measurement and bi-weekly payment submittals.

**STH 23 Lake Delton – Reedsburg WisDOT (2017)** Lead inspector for a 9-mile asphalt full reconstruction project including a concrete bridge and two large box culverts. Bridge work included CADD drawings for sub structure and deck concrete quantities, quantity checks on all reinforcing, deck removal with capture system, setting girders, deck pour, parapets and beam guard installation. Mainline work consisted of pavement removal and replacement, EBS and marsh excavation, removal and replacement of base courses, layout of sign and pavement marking.

**5105-00-61 Various Highways – SW Region (2017)** Project Leader for a multi-county asphalt rehabilitation /preservation project. Work consisted of crack routing and bituminous sealing throughout the Southwest region, including inspection, traffic control, signing, daily diaries, coordination with multiple state and local agencies, quantity measurement and bi-weekly payment submittals.

**6145-00-73 Lake Delton – IH 90 (2017) Lead** inspector for an urban project in Wisconsin Dells/Lake Delton on USH 12/Wisconsin Dells Parkway. Project consisted of a full reconstruction of .25 mile of roadway including two intersections, traffic signals, traffic and lighting cabinets, decorative lighting system, bases, poles, conduit, wiring, colored stamped concrete, and construction of a small plaza/park with large "Lake Delton" sign, multiple planters, benches, flag poles and tri-colored concrete design elements, measurement, testing and record keeping of all work and materials for payment.





## Erik Nielsen

### Engineering Technician III

**Years of experience**  
24**Education**  
AA, Civil Engineering,  
Mid-State Technical  
College, 1988**Registrations/Certifications**

- Level 1 Portland Cement Concrete Technician I
- ACI Aggregate Technician I
- ACI - Concrete Field-Testing Technician
- Nuclear Density Technician I Certification
- AMPP BC1 Bridge Coatings Inspector Level 1
- Precast Concrete Institute Level I/Level II Plant Quality Control Certification

**Training**

- Compressive Strength Testing

---

Mr. Nielsen has 24 years of experience and is responsible for construction quality assurance testing for industrial, commercial, environmental, geotechnical, and geosynthetic construction projects.

---

### Selected project experience

**CTH R Sewer Collector, Commons Circle to Porter Road, Portage County, Wisconsin (2024/25)** Field inspector for \$1.77M sanitary sewer interceptor. Responsibilities included the monitoring stripping topsoil and subcutting over the proposed sewer, monitoring the line and grade of the sewer, backfilling and compaction, and air and mandrel testing upon completion. This sewer was over twenty feet deep, with deep well dewatering system, and running parallel within 10' of the edge of existing CTH B.

**CTH Z Duck Creek Bridge, Adams County, Wisconsin (2024)** Field Inspector for \$552K, 26' slab span two-lane roadway. Responsibilities included the removal of an existing dual culvert structure, excavating, forming and pouring 132 CY concrete, cast in place piling, 20,450 pounds reinforcement, and 900 feet of roadway reconstruction widening. Related tasks included QV testing, documentation and collection of pay quantities.

**CTH M, CTH G to 8th Drive; Adams County, Wisconsin (2023/24)** Field Inspector for 3 miles of two-lane roadway reconstruction and widening. Responsibilities included the monitoring of pavement removal, subgrade cuts and fills, asphalt paving, site restoration, culvert replacement, and utility relocations. Related tasks included proper documentation and collection of pay quantities.

**Harvest Acres Subdivision Sanitary and Watermain Utilities; Plover, Wisconsin (2022)** Inspector monitoring contractor's progress and inspection of Village of Plover underground utilities including municipal sanitary sewer, watermain, and service lateral installation. This included compaction, measurement and computation, testing observation, materials documentation, and submitting to consultant staff all bid item quantities for payment.

**USH 45 Chain O Lakes Road to Michigan State Line, WisDOT; Vilas County, Wisconsin (2022)** Asphalt paving inspection and PWL density testing technician for the 15.1-mile rural highway project between Eagle River and Land O Lakes. Communication and coordination with AECOM staff, as well as communicating test result trends with the contractor's QC department, and timely submission of daily density testing results for WisDOT review.

**Post Road Business 51-Springville Dam, WisDOT; Portage County, Wisconsin (2021)** Inspector for the \$558K installation of the concrete poured in place dam structure, precast box culvert, outfall structure, overflow piping, temporary bypass piping, earth embankment fills. Extreme coordination was required between the Village of Plover, WisDOT and the WDNR to complete this multi-disciplined designed and funded project.

**Post Road Business 51 Sanitary and Watermain Utilities, WisDOT; Portage County, Wisconsin (2021) Inspector** for the \$306K installation of Village of Plover utilities including all watermain piping, fittings, valves, hydrants, services abandonment and testing, sanitary sewer piping, manholes, services, abandonment, and testing. Extreme coordination was required between the Village of Plover, their Utilities and WisDOT to complete this multi-disciplined designed and funded project.

**Burnt Rollways, Dam Superstructure Replacement and Dam Improvements, WVIC; Three Lakes, WI (2020) On-site QCIP Manager**, responsible for on-site quality control of materials and construction activities during bridge superstructure removal and replacement, as well as approach roadway replacement, dry hydrant installation and concrete surface repairs to the existing structure. Also responsible for collecting and reviewing submittals and shop drawings, as well as performing proper documentation of construction activities to assure compliance with FERC standards and requirements, as well as preparing a final construction report for submittal to FERC.

**Buckatabon Bridge, Superstructure Replacement and Dam Improvements, WVIC; Conover, WI (2020) Lead CQA** technician overseeing the implementation of the work plan to remove and replace the superstructure, along with gate drive and concrete rehabilitation of the dam section. Provide documentation of site activities while performing rebar inspection, concrete and grout repair conformance testing and inspection.

**South First Avenue Reconstruction, WisDOT; Wausau, Wisconsin (2019) Field** technician responsible for observation and documentation of construction means and methods, and material quantities, during the removal and replacement of sanitary sewer lines, ADA sidewalk, curb and gutter and concrete pavement.

**Ephraim Streetscape, WisDOT; Ephraim, Wisconsin (2019) Quality Assurance Technician** responsible for acceptance density testing during the placement of hot mix asphalt as part of the STH 42 roadway reconstruction project. Field testing and documentation performed in accordance with Wisconsin DOT specifications and standards.

**Moon Dam Upgrades, Big Eau Pleine Flowage; Mosinee, Wisconsin (2013) On site engineering representative** during upgrades to dam, which included installation of spillway rock anchors, and upgrades to Tainter gate hoist system. Performed FERC mandated activities and inspections including the monitoring and documentation of construction activities, methods, materials, and procedures, as well as sampling and compressive testing of repair concrete and grout. Also performing necessary environmental impact inspections. All data and activity reports would be assembled into necessary weekly and monthly progress reports, submitted to FERC.

**Former Peach Avenue Manufactured Gas Plant; Marshfield, Wisconsin (2009-2011) Perform** semi-annual groundwater sampling program, which includes water sampling, field parameters, and site condition inspections for the 52 sampling points on site.

**Weston Power Plant Unit 4, Wisconsin Public Service; Weston, Wisconsin (2005-2009) Lead CQA** on site during construction of new coal-fired power generation unit, and associated structures and infrastructure. Responsible for day-to-day inspection, documentation and conformance testing of soil backfilling and compaction operations, concrete placement, and grouting activities. Reports and work summaries were provided to construction management on a daily basis.

**University of Wisconsin-Stevens Point Fine Arts Center Remodeling and Addition; Stevens Point, Wisconsin (2004) Responsible** for foundation subgrade inspection, soils testing, reinforcing inspection of footings, walls, columns, slab on-grade, and structural decks.

**ATC Transmission Line Upgrades (Multiple Projects, 2002-2004) Provided** field support as a member of the construction quality assurance inspection staff during the construction of concrete caissons for power line upgrades at multiple projects in Wisconsin. Duties included the oversight of construction practices and conformance acceptance of construction materials.

# Chad Wilson

## Assistant Construction Superintendent



### Years of experience

21

### Education

AS, Civil Engineering Technology/Technician, Northeast Wisconsin Technical College, 2012

Diploma, Drafting and Design, ITT Technical Institute, 2010

### Registrations/Certifications

- Certified Survey Technician I
- Level 1 Portland Cement Concrete Technician I
- ACI Aggregate Technician I
- ACI - Concrete Field-Testing Technician
- Nuclear Density Technician I Certification
- Certified Nuclear Radiation Safety Officer

### Training

- Concrete Strength Testing
- Aggregate Testing for Transportation Systems
- OSHA 40-Hour HAZWOPER Training
- OSHA 30-Hour Construction Safety Training

Mr. Wilson is an Assistant Construction Superintendent in the Oshkosh office. Mr. Wilson has 21 years of experience working in various roles in the construction and environmental remediation space. Mr. Wilson predominantly performs oversight and quality assurance testing for industrial, geotechnical, environmental, and municipal projects.

### Selected project experience

**Lutz Park Trail, Appleton, Wisconsin.** Project involved construction of a multi-use path. Duties: Oversight of non-hazardous materials excavation, reconstruction of a fishing platform, relocation of a kayak launch, installation of electrical utilities, observation of rebar placement, grading, and concrete set up and testing. Performed construction oversight and documentation.

**Pioneer Riverwalk East-West Segment, Oshkosh, Wisconsin.** Project involved construction of a multi-use path. Duties: Oversight of non-hazardous materials excavation, installation of storm sewer and electrical utilities, installation of historic railroad portal, observation of rebar placement, grading, and concrete set up and testing. Performed construction oversight and documentation. Collected survey data using laser/level and GPS Unit to mark locations and elevations.

**Lakeshore Riverwalk, Oshkosh, Wisconsin.** Project involved construction of a multi-use path. Duties: Oversight of non-hazardous materials excavation, sheet pile installation, and installation of utilities, observation of rebar placement, grading, electrical placement, and concrete set up and testing. Performed construction oversight and documentation. Collected survey data using laser/level and GPS Unit to mark locations and elevations.

**City of Oshkosh, South Shore Riverwalk, Oshkosh, Wisconsin.** Project involved construction of a multi-use path. Duties: Oversight of non-hazardous materials excavation, sheet pile and anchor installation, installation of utilities, observation of rebar placement, grading, electrical placement, and concrete set up and testing. Performed construction oversight and documentation. Collected survey data using laser/level and GPS Unit to mark locations and elevations.

**Jeld-Wen Riverwalk, Oshkosh, Wisconsin.** Project involved construction of a multi-use path. Duties: Oversight of non-hazardous materials excavation, sheet pile and anchor installation, and installation of utilities, observation of rebar placement, grading, electrical placement, and concrete set up and testing. Performed construction oversight and documentation. Collected survey data using laser/level and GPS Unit to mark locations and elevations.

**Ripon Dam Reconstruct, Ripon, Wisconsin.** Project involved reconstruction of a dam. Duties: Construction oversight, concrete testing, rebar inspection, density testing.

**Stringham Outfall, Oshkosh, Wisconsin.** Duties: Oversight of non-hazardous materials excavation, sheet pile installation, and installation of utilities. Performed construction oversight and documentation. Collected survey data using laser/level and GPS Unit to mark locations and elevations.

**Buckstaff VPLE, Geopiers, Oshkosh, Wisconsin.** Duties: Oversight of non-hazardous materials excavation and installation of deep foundations. Oversaw the excavation of building foundations.

**City of Oshkosh, North Main Street Detention Basin Construction, Oshkosh, Wisconsin.** Duties: Overseeing excavation, utility construction, and all concrete and aggregate testing. Collected survey data using laser/level and GPS Unit to mark locations and elevations.

**Waste Management - Wisconsin - Ridgeview RDF, WM 2016 Ridgeview Cap, Whitelaw, Wisconsin.** Duties: Field technician providing onsite Construction Quality Assurance monitoring, documentation, and testing. Duties included inspection of construction activities during installation of final cover, liner installation, and fabric installation.

**City of Oshkosh, Southwest Industrial Park, Oshkosh, Wisconsin.** Duties: Oversaw mass grading, utility construction, and all concrete and aggregate testing. Collected survey data using laser/level and GPS Unit to mark locations and elevations.

**City of Oshkosh, Boatworks Restroom & Parking Lot, Oshkosh, Wisconsin.** Duties: Oversaw all aspects of concrete placement and testing. Responsibilities also included hot mix asphalt testing.

**City of Oshkosh, Senior Center Parking Lot, Oshkosh, Wisconsin.** Duties: Oversight of non-hazardous materials excavation, site grading, installation of utilities, and concrete set up and testing. Performed construction oversight and documentation. Collected survey data using laser/level and GPS Unit to mark locations and elevations.

**City of Oshkosh, The Rivers 1.5 Development, Oshkosh, Wisconsin.** Duties: Oversight of non-hazardous materials excavation and installation of utilities. Collected survey data using laser/level and GPS Unit to mark locations and elevations.

**City of Oshkosh, 9th & Washburn CM, Oshkosh, Wisconsin.** Duties: Overseeing excavation, utility construction and all testing onsite. Collected survey data using laser/level and GPS Unit to mark locations and elevations.

**City of Oshkosh, Snell Road Reconstruction, Oshkosh, Wisconsin.** Duties: Oversight of utilities placement and density testing.

**City of Oshkosh, City Garage Construction, Oshkosh, Wisconsin.** Duties: Performed concrete and hot mix asphalt testing. Collected survey data using laser/level and GPS Unit to mark locations and elevations.

**City of Oshkosh, WFP Storage Building Construction, Oshkosh, Wisconsin.** Duties: Performed concrete testing.

**City of Oshkosh, 2016 Concrete Testing, Oshkosh, Wisconsin.** Duties: Performed unconfined compressive strength testing on concrete cylinders. Managed cylinders to ensure that cylinders are tested on time.

**City of Oshkosh, 2015 City Concrete Testing, Oshkosh, Wisconsin.** Duties: Performed unconfined compressive strength testing on concrete cylinders. Managed cylinders to ensure that cylinders are tested on time.

**City of Oshkosh, Knapp St & Timmerman - 2016, Oshkosh, Wisconsin.** Duties: Performed groundwater gauging and landfill gas monitoring.

**American Transmission Company LLC, Bay Lake North Appleton to Morgan - Phase 3 Geotechnical, Appleton, Wisconsin.** Duties: Performed laboratory testing of soil samples.

## Hugh Kinnard

### Environmental Scientist

**Years of experience**  
15**Education**  
BS, Geography  
(Physical Environment)  
University of Wisconsin  
– Stevens Point, 2007**Training**

- OSHA 40-Hour HAZWOPER Training
- Nuclear Density Gauge Operator Training
- OSHA 30-Hour Construction Training

---

Mr. Kinnard is an engineering technician in Wisconsin and has gained experience on general construction, geophysical surveys, and environmental remediation projects.

Geophysical surveys project involvement includes, but not limited to, collecting survey data using the application of magnetic and electromagnetic methods for detection of unexploded ordinance (UXO) using an EM61-MK2 metal detector, coordinating geophysical survey field crews, and reviewing/documenting field data.

Environmental remediation project involvement includes, but is not limited to, coordinating on river sediment sampling activities; logging, analyzing, and sampling sediment cores, reviewing data, and recommending future actions based on analytical results and sediment profiles.

---

### **Selected project experience**

#### **Site Design Experience**

**Pioneer Riverwalk East-West Segment, Oshkosh, Wisconsin.** Project involved construction of a multi-use path. Duties: Oversight of non-hazardous materials excavation, installation of storm sewer and electrical utilities, installation of historic railroad portal, observation of rebar placement, grading, and concrete set up and testing. Performed construction oversight and documentation. Collected survey data using laser/level and GPS Unit to mark locations and elevations.

**Georgia Pacific, Project Cinco, Green Bay, Wisconsin.** Performed construction oversight and documentation during installation of deep foundation (H-piles) and ground improvements (geopiers) and utility installations for the construction of a paper mill expansion project.

#### **Geophysical Survey Experience**

**Joint Powers Authority, Former Fort McClellan Redevelopment, Anniston, Alabama.** Geologist and database assistant. Collected geophysical survey data using an EM61-MK2 metal detector to detect UXO. Assist UXO removal crews, acting as quality control, with clearing targets ensuring target location is below project millivolt threshold. Coordinated field crews to collect geophysical survey data and quality control. Review, import, and distribute all field data to other subcontractors and client.

### **Environmental Remediation Experience**

**NCR, Fox River Cleanup Project, Green Bay, Wisconsin. Field Sampling Lead.** Oversaw the collection of sediment sampling and verification activities on the river, soil classification and sampling of sediment cores, review and distribute field data/results, and review and present analytical results to client and oversight agencies for approval.

**WDNR, WDNR RAOR Superior Slips Contaminated Sediment, Gruber's Grove Bay, Wisconsin.** Oversaw the collection of sediment sampling using vibracore method and soft sediment poling within Gruber's Grove Bay. Record and review all necessary field data within EQUIS field forms.

**Neenah Enterprises, Inc, Downstream Source Neenah Slough, Neenah, Wisconsin.** Collect soft sediment measurements and sediment cores within the Neenah Slough. Log and samples sediment cores and send samples for chemical analysis.

**Menominee Indian Tribe, Neopit Mill Pond Sediment Sampling, Neopit, Wisconsin.** Collect sediment cores within Neopit Mill Pond. Log and samples sediment cores and send samples for chemical analysis.

**WDNR, Badger Army Ammunition Plant Data Gap Investigation, Superior, Wisconsin.** Oversaw the collection of sediment sampling using vibracore method within four different boat slips along the St. Louis River. Record and review all necessary field data within EQUIS field forms.

### **Geotechnical Experience**

**City of Sheboygan, Olive Garden Frontage Road Geotechnical Investigation, Sheboygan, Wisconsin.** Oversaw the drilling effort for 6 soil borings within the proposed footprint of the Olive Garden Frontage Road. Coordinated the subsurface drilling effort with the subcontracted drill crew.

**Boldt, Georgia Pacific Project Cinco, Green Bay, Wisconsin.** Oversaw and documented the installation of wickdrains and geopiers which assist with drainage and ground stabilization.

**Charter Steel, Proposed Stormwater Detention Pond Geotechnical Investigation, Saukville, Wisconsin.** Oversaw the drilling effort for 3 soil borings within the proposed stormwater detention pond. Coordinated the subsurface drilling effort with the subcontracted drill crew and collected soil samples.

**Kimberly-Clark Corporation, Marinette Mill Substation Soil Removal, Marinette, Wisconsin.** Oversaw the soil excavation for any activities during the construction of the substation. Collected soil samples for PID readings and lab analytics.

**WDNR, WDNR RAOR Superior Slips C-Street Slip Geotechnical Investigation, Superior, Wisconsin.** Oversaw the drilling effort for 4 soil borings along the C-Street Slip shoreline. Coordinated the subsurface drilling effort with the subcontracted drill crew and collected soil samples for analytical analysis.

**City of Oshkosh, CIP Drilling Support, Oshkosh, Wisconsin.** Oversaw the drilling effort for soil borings within city streets. Coordinated the subsurface drilling effort with the subcontracted drill crew and collected soil samples for analytical analysis.

### **Landfill Experience**

**Waste Management, 2022 Ridgeview Well Installation.** Oversaw the drilling and installation of five gas monitoring wells for the active landfill cell at Ridgeview Landfill.

**Fond du Lac County, 2023 Rolling Meadows Maintenance.** Oversaw the repairs and maintenance of header valves, pressure testing, and installation of orifice plates at each well at Rolling Meadows Landfill.

**Domtar Industries Inc, Area 03 Landfill – Lift 3 Cells 1-4 Construction.** Oversaw the construction of a new lift within cells 1-4. Activities included sewing and installation of the geotextile fabric layer, intermediate sand cover, interior and exterior berm construction.

**Waste Management, 2024 Ridgeview Well Installation.** Oversaw the drilling and installation of five gas monitoring wells for the active landfill cell at Ridgeview Landfill.



116 S. Adams Street, Suite 201  
Green Bay, WI 54301  
920 / 592 9440  
920 / 592 9445 fax  
www.graef-usa.com

April 11, 2025

Julie A. Schmelzer  
Village Administrator  
Village of Sister Bay  
Electronic Submittal: [Julie.schmelzer@sisterbaywi.gov](mailto:Julie.schmelzer@sisterbaywi.gov)

**SUBJECT: Proposal for the Construction Administration Services  
Highway 57 Trail – Project ID 4610-00-00**

GRAEF is thrilled to submit a proposal to provide the Village of Sister Bay with professional services for the construction supervision phase of the Highway 57 Trail Project listed in your March 24, 2025 request. We understand that experience with similar projects is a very important criteria in your selection process. We believe GRAEF's expertise in construction supervision, specifically related to multimodal trails and the like, as well as our Wisconsin Department of Transportation (WisDOT) Northeast Region project experience, will provide you with a level of comfort and confidence that in the end will be a successful project for the community.

GRAEF's construction management approach revolves around a strong, experienced project manager and supporting staff who understand WisDOT's construction process, can foresee and prevent construction challenges before they become issues, and have the personality to collaborate with the design engineer, the general contractor, property owners near the site, and the municipality's decision makers. Our goal is to oversee a safe construction environment for all users and passersby, minimize change orders during construction, and ultimately complete a cost-effective and high-quality project that exceeds its anticipated useful life.

Some of the key project benefits that you will gain through the selection of GRAEF will include:

**Highly Skilled, Experienced Project Team:** The GRAEF construction team has a unique blend of WisDOT Northeast Region Local Program construction experience, familiarity with the Sponsor's Guide to Non-Traditional Transportation Implementation, and the demeanor to get along and build consensus with all the different personalities and stakeholders – design engineer, general contractor team, adjacent property owners, and the Village of Sister Bay.

**Availability:** The team is ready and available to begin work on this project after the final design has been completed and a general contractor is secured. Knowing that a project schedule can change for various reasons, our team has the flexibility and willingness to be available during the decided-upon construction schedule.

**Commitment:** The construction team pledges its expertise to provide superior construction engineering services and clear communication to all stakeholders. Our job is to successfully bring the project to a conclusion that allows everyone to feel as though the temporary inconveniences of construction were worth it once the benefits of the completed project shine through.

We look forward to the opportunity to work with you and construct this multimodal trail that will provide users of all ages, abilities, backgrounds, and incomes a safe, comfortable, and convenient transportation alternative. The GRAEF team is confident that we have the expertise, experience and capability to meet your needs, leading to a successful project. Please contact me directly with any comments or questions regarding this proposal. Our goal is to tailor our services to meet your unique needs.

Sincerely,

Adam Krieger, P.E.  
Project Manager



## Firm Information

Graef-USA, Inc.  
116 S. Adams Street, Suite 201  
Green Bay, WI 54301  
www.graef-usa.com

**Corporate Office**  
275 W. Wisconsin Avenue, Suite 300  
Milwaukee, WI 53203

**Project Manager**  
Adam Krieger  
tel 920 / 405 3839  
adam.krieger@graef-usa.com

GRAEF provides quality consulting services in:

Planning  
Urban Design  
Landscape Architecture  
Traffic/Transportation Engineering  
Sustainable Design

Structural Engineering  
Parking Consulting  
Site/Civil Engineering  
Environmental Engineering  
Surveying and Field Services

Mechanical Engineering  
Electrical Engineering  
Plumbing and Fire Protection  
Engineering  
Commissioning

## Project Staff

**Our Green Bay office will be leading the oversight of this construction project and the GRAEF team has all the required experience necessary to oversee a successful build of the Highway 57 Trail.** In addition to Bryan and Christine shown here, the construction team has five other members that have varying levels of experience that can provide support whenever needed.

<p><b>Bryan Lampshire</b> <b>Construction Project Manager</b></p>	<p><b>Professional Registration</b> GRAEF Radiation Safety Officer, HTCP - Transportation Materials Sampling Technician (TMS), HTCP - Aggregate Technician I (AGGTEC-I), HTCP - Grading Technician I (GRADINGTEC-I), HTCP - Hot Mix Asphalt, Technician I, Production Tester (HMA-IPT), HTCP - Materials Coordinator Training (MCT), HTCP - Nuclear Density Technician I (NUCDENSITY-I), HTCP - Portland Cement Concrete Technician I (PCCTEC-I), HTCP - Portland Cement Concrete Technician II (PCCTEC-II), HTCP - Portland Cement Concrete Mix Design Certification (PCC-MDC)</p>	<p><b>Education</b> University of Wisconsin - Milwaukee Milwaukee Area Technical College, Milwaukee, WI</p>
<p><b>Project Experience</b> Bryan has 29 years of experience on WisDOT highway construction projects and local municipal construction projects throughout the Northeast Region. He has been a project leader on numerous complex projects. He is currently working as an assistant construction leader on the IH 41 freeway expansion project.</p> <p>Bryan is familiar with contractor requirements and the construction coordination required, assuring that a project is completed in accordance with the plans and specifications. Bryan performs the review and approval of material submittals, ensures project plans and specifications are followed, tracks material quantities for testing, communicates material specifications and quality verification needs to lead and inspection team, monitors material quality control for necessary corrective action, and tracks items until completion.</p> <p><b>Libal Street, Allouez, WI – Construction Project Leader/Inspector:</b> The project consisted of reconstruction/pavement replacement of 1.6 miles of urban asphalt roadway. Other project elements include ancillary concrete, storm sewer, grading, traffic control and coordination with local businesses and residents. Project improvements include common excavation, asphalt pavement, new concrete sidewalk, new and replacement curb and gutter, concrete driveways, storm</p>		

sewer, culvert replacements, pedestrian curb ramp construction. Length 1.6 Miles; **WisDOT NE Local Program**; High Complexity

**Manitowoc Road, Bellevue, WI – Construction Inspector:** The project consisted of a 1.4-mile urban rehabilitation improving pavement conditions, safety, drainage and the addition of new pedestrian facilities with extensive public outreach and coordination. Deliverables included construction inspection of: removing asphaltic surface, removing curb and gutter, grading, storm sewer, concrete curb and gutter, concrete sidewalk and driveway, HMA paving, pavement marking, permanent signing, restoration, erosion control, Box Culvert C-5-155 extensions and all incidental items necessary to complete the work while maintaining local and emergency access to all businesses and residents to and from the work zone at all times. Length 1.4 Miles; **WisDOT NE Local Program**; Medium Complexity

**Christine Pichler, PE**  
**Construction Project Support**

**Professional Registration**  
Professional Engineer – WI

**Education**  
B.S., Civil Engineering  
University of Wisconsin-Platteville

#### Project Experience

Christine will be supporting Bryan and has 10 years of experience as a civil/stormwater engineer. She specializes in the design of municipal utilities and roadways, storm water management and system design, boat launch and park facilities, multimodal trails and site design projects. She is familiar with the preparation of permit applications and has experience providing construction administration services for her own design work.

**Ashwaubomay Trail, Ashwaubenon, WI – Civil Engineer:** Provided site design and construction oversight for the multimodal bridge crossing of Ashwaubenon Creek near its confluence with the Fox River. This bridge crossing is a critical link in the Fox River Trail West. The bridge has a span length of approximately 400 linear feet. To further enhance connectivity, GRAEF and the client have developed plans for 0.8 miles of trail through Ashwaubomay Park connected to the bridge. Permitting of the project included storm water management, endangered resource concerns, and an archaeological investigation. Construction will begin in May 2025 on the next phase of trail. The project will include sidewalk connections to river access points, areas for picnic tables, benches, and bench swings, improved stairs in the park, and a spur trail to serve further trail extensions to the nearby Brown County Fairgrounds.

**Bomier Boat Launch, City of De Pere, WI – Civil Engineer:** Provided the City of De Pere with design, permitting, and construction oversight services on the expansion of the existing Bomier Boat Launch. The boat launch was expanded to provide a true two-lane boat launch at the existing location. The concrete boat launch was cast in place to match the slope of the existing pavement. New dock sections were constructed on driven piles to match the existing dock system. A new floating ADA accessible kayak launch was installed at the end of the dock. Included in this project were new parking areas for cars and boat trailers, asphalt mill and overlay with reconfigured parking in the existing lot for cars and boat trailers, ADA accessible parking and sidewalks adjacent to the existing bathroom building, and a connection to the regional Fox River Trail. The adjacent park was also updated with an ADA accessible sidewalk, cast in place concrete stairs, concrete pads for benches and other seating, and a covered pavilion for a picnic table.

**Fox River Boardwalk, Village of Little Chute/City of Kaukauna, WI – Project Engineer:** Provided detailed design, permitting, and bidding assistance for the new Fox River Boardwalk to and over the Fox River between Little Chute and Kaukauna. Completed the feasibility study and due diligence investigation for a roughly 1,130 linear foot span bridge and trail extensions, connecting Little Chute and Kaukauna.

## Team Availability

The schedule proposed for the Highway 57 Trail project requires the selection of a team that has a proven track record delivering construction projects on time and on budget. Our staff has extensive experience working with local municipalities and WisDOT on similar projects. We also recognize that a successful partnership between the Village of Sister Bay, its constituents, and GRAEF, is essential to completing a successful project. The GRAEF construction team has complete availability for duration of construction and sees no conflicts in meeting the project deadlines.

## Similar Project Examples

Shown below are multiple examples of similar projects with construction inspection components completed by members of the GRAEF team:

- Libal Street
- Manitowoc Road
- Bomier Boat Launch
- Ashwaubomay Trail

### Libal Street

Construction oversight for the Libal Street Reconstruction Project occurred in the Summer of 2024. This was an urban reconstruction/pavement replacement project in the Village of Allouez on Libal Street from WIS 172 to Kalb Ave (1.6 miles total project length) in Brown County. Improvements include common excavation, asphalt pavement, concrete sidewalk, curb and gutter, concrete driveways, storm sewer, culvert replacements, curb ramp construction.

Extensive coordination with the Village of Allouez, local businesses, and residents was needed to make this project successful. Sidewalk was added to one side of the roadway where it had not existed previously, and care was taken to preserve as many of the existing trees along the project as possible. The construction oversight team worked directly with the contractor to ensure that all temporary and permanent pedestrian facilities were installed to WisDOT and ADA standards.

### Manitowoc Road

Construction oversight for the Manitowoc Road Rehabilitation Project occurred in the Summer of 2021. The project consisted of a 1.4-mile urban rehabilitation improving pavement conditions, safety, drainage and the addition of new pedestrian facilities with extensive public outreach and coordination. This project was built through **WisDOT's Local Program** and extensive coordination with the Village of Bellevue was required. Construction inspection of major items of work, removing asphaltic surface, removing curb and gutter, grading, storm sewer, concrete curb and gutter, concrete sidewalk and driveway, HMA paving, pavement marking, permanent signing, restoration, erosion control, Box Culvert C-5-155 extensions and all incidental items necessary to complete the work while maintaining local and emergency access to all businesses and residents to and from the work zone at all times.

The project team was also responsible for the construction of all sidewalks and curb ramps on the project corridor. There was extensive in-field work to make sure that all facilities conformed to WisDOT and ADA standards.

### Bomier Boat Launch

GRAEF provided the City of De Pere with design, permitting, and construction oversight services on the expansion of the existing Bomier Boat Launch. The boat launch was expanded to provide a true two-lane boat launch at the existing location.

The concrete boat launch was cast in place to match the slope of the existing pavement. New dock sections were constructed on driven piles to match the existing dock system. A new floating ADA accessible kayak launch was installed at the end of the dock. Included in this project were new parking areas for cars and boat trailers, asphalt mill and overlay with reconfigured parking in the existing lot for cars and boat trailers, ADA accessible parking and sidewalks adjacent to the existing bathroom building, and a connection to the regional Fox River Trail.

The adjacent park was also updated with an ADA accessible sidewalk, cast in place concrete stairs, concrete pads for benches and other seating, and a covered pavilion for a picnic table.

National Resource Damage Assessment program (NRDA) and WI DNR Recreational Boating Facilities (RBF) grants funded all but \$60,000 of the project.

### Ashwaubomay Trail

The Ashwaubomay River Trail Bridge in Ashwaubenon, WI, completed in August 2023, is a 386-foot, 5-span steel girder pedestrian bridge. Designed by GRAEF and constructed by Michels Construction, the bridge connects Ashwaubomay Park to new housing developments, enhancing community connectivity and recreational access.

The client needed a bridge to improve community connectivity and provide safe, accessible recreational access. They sought a design that would be both functional and visually appealing. To meet these needs, we designed a bridge with ADA compliance, a midspan overlook, and vibrant LED lighting. The project faced significant challenges, including environmental concerns related to historical PCB contamination in the Fox River. We conducted thorough geotechnical and environmental investigations and implemented innovative construction methods to minimize sediment disturbance. Additionally, the bridge design had to accommodate increased navigational clearance for boaters, which required adjustments to the girder design and additional piles and piers.

The project was funded through a public-private partnership, including contributions from the David and Rita Nelson Foundation. It began in January 2023 and celebrated its ribbon-cutting in June 2024. The bridge's efficient design and lighting have made it a local landmark, increasing trail use and serving as a catalyst for further trail extensions. It provides a safe, accessible, and visually prominent crossing over Ashwaubenon Creek, significantly enhancing community connectivity and recreational opportunities.

To further enhance connectivity, GRAEF and the client have developed plans for 0.8 miles of trail through Ashwaubomay Park connected to the bridge. Permitting of the project included storm water management, endangered resource concerns, and an archaeological investigation. Construction will begin in May 2025 on the next phase of trail. The project will include sidewalk connections to river access points, areas for picnic tables, benches, and bench swings, improved stairs in the park, and a spur trail to serve further trail extensions to the nearby Brown County Fairgrounds.

## Project Approach

Our understanding and technical approach to performing construction administration services for the Highway 57 Trail project is based on the project solicitation dated March 24, 2025, and our familiarity with the WisDOT NE Region Local Program, the *Sponsor's Guide to Non-Traditional Transportation Project Implementation*, WisDOT's Construction Materials Manual (CMM), and the Transportation Alternatives Program (TAP) process. As seen in this submittal, the GRAEF construction team has a demonstrated history of successfully overseeing and managing multimodal trail and other construction projects in WisDOT's NE Region.

The GRAEF construction team's overall role will be to ensure the project is built in accordance with the approved plans and specifications, while following applicable WisDOT and the Village of Sister Bay specifications and standards. This happens all while managing construction site safety, quality of materials and processes, and environmental compliance. Some general tasks that will require our expert attention include:

- **Pre-Construction Preparation:** Review project plans and specifications and verify what permits are necessary prior to beginning work. A pre-construction meeting will occur with the contractor, Village, and relevant stakeholders to clarify expectations, safety procedures, and communication protocols.
- **Site Preparation and Earthwork:** Verify clearing and grubbing limits, erosion control installation, and the protection of sensitive features.
- **Base Aggregate and Asphalt Paving:** Confirm base aggregate material meets gradation and thickness requirements and that compaction testing is performed and passes. Asphalt placement is monitored for temperature, mat thickness, and surface smoothness.
- **Accessibility:** Ensure that trail cross slopes, ADA curb ramps, and detectable warning fields are constructed within tolerances. Special attention will be given to transitions at existing driveways and connections to the existing sidewalk network.

- Erosion Control and the Environment: Erosion control measures will be checked as needed and any commitments required in the environmental document (completed during the design phase) will be implemented.
- Project Closeout: Conducts final walkthroughs, verifies punch list completion, and ensures that all required testing and documentation is submitted.

Multimodal trails that enable users of all ages, abilities, backgrounds, and incomes the opportunity to travel safely, confidently, and efficiently are the result of a combined efforts – planning, design, and construction. This project will add a highly desirable trail to a growing area of the Village of Sister Bay, making the community safer and more accessible. The GRAEF construction team looks forward to the opportunity to be a part of adding to the Village of Sister Bay’s charm and appeal.

## Scope of Work

For this Project, some of the common tasks associated with a WisDOT Local Program / Transportation Alternatives Program (TAP) project include, but are not limited to:

### Construction Management

- Ensure project design plans and specifications are followed.
- Review of quantities, payment requests and change orders.
- Facilitate and attend progress meetings as needed for project demands.
- Prepare construction bulletin documents as required to accommodate differing conditions and other changes.
- Complete substantial completion punch list review and prepare Certificate of Substantial Completion and punch list.
- Assemble closeout documents including contractor markup record drawings.
- Transportation Alternatives Program (TAP) checklists and documentation.
- Ensure that the WisDOT Construction and Materials Manual (CMM) is followed.
- Ensure that the WisDOT Local Program *Sponsor’s Guide to Non-Traditional Transportation Project Implementation* is followed.

### Construction Observation

- Provide observation of the work and materials to confirm compliance with the contract documents.
- Review and approval of specified shop-drawings and submittals.
- Respond to Contractor Request For Information (RFI).
- Provide quantity measurement and tracking.
- Record information from informal job meetings.
- Provide an overall eye of quality assurance/quality control for construction activities.

GRAEF has the flexibility and availability to perform the proposed construction services per the construction schedule that is determined during final design and once a general contractor is selected.

# STATEMENT OF QUALIFICATIONS

APRIL 11  
2025

PROFESSIONAL ENGINEERING SERVICES

Transportation Alternatives  
Program (TAP)

Construction Administration  
Services for the

**STH 57 TRAIL**  
**Northwoods Drive to STH 42**

Project ID 4610-00-00/70



## TABLE OF CONTENTS

STATEMENT OF UNDERSTANDING  
GENERAL PROJECT REQUIREMENTS  
CONSTRUCTION TEAM  
RECENT RELATED EXPERIENCE / REFERENCES

### McMAHON. YOUR FULL-SERVICE DESIGN & CONSULTING FIRM

- Architecture
- Environment & Infrastructure
- Water & Wastewater
- Structures & Building Systems
- Public Safety & Municipal Management
- Industry

Wisconsin | Illinois | Indiana 920.751.4200 MCMGRP.COM

**McMAHON**  
ENGINEERS ARCHITECTS



# STATEMENT OF QUALIFICATIONS

## STATEMENT OF UNDERSTANDING

The Village of Sister Bay will be constructing a 10-foot wide two-way multi-modal path along STH 57. The limits of the project are from Northwoods Drive to STH 42 with a project length of 0.70-miles. The construction of this project is being funded through the Federal Transportation Alternatives Program (TAP). This funding requires that the contract administration be in accordance with the Wisconsin Department of Transportation (WisDOT) Local Program Sponsor's Guide to Non-Traditional Transportation Projects.

Although the Village is requesting separate proposals for design and construction, it is our understanding the Village will utilize the same consultant for both services. Given the direct connection between design and construction, splitting these two services is not recommended from an execution point. McMahon believes it can deliver the greatest value to the Village of Sister Bay for the STH 57 Trail project by providing both design and construction services with a fully integrated approach that ensures accountability, consistency, and streamlined communication. All of which lead to cost-effective solutions and ultimately a project the Village will be proud of.

## GENERAL PROJECT REQUIREMENTS

McMahon has extensive experience in design, bidding, and construction of projects funded through WisDOT and the Transportation Alternatives Program. McMahon fully understands the requirements of the WisDOT Local Program's Sponsor's Guide to Non-Traditional Transportation Project Implementation.

The McMahon Construction Team provides the following attributes that will be critical to the success of the STH 57 Trail Construction Project.

- Extensive experience working with the WisDOT Local Program.
- Experience with TAP funded projects.
- Familiarity with doing projects for the Village of Sister Bay.
- Familiarity with the requirements of the WisDOT Sponsor's Guide to Non-Traditional Transportation Project Implementation.
- Ability to work with Village of Sister Bay's staff.
- Experienced project management staff.
- Experience with public involvement and stakeholder coordination.
- Ability to provide the resources to complete the project within the required timeline.
- Ability to provide utility coordination in accordance with the WisDOT Utility Coordination Manual.
- Ability to coordinate with railroad personnel (WATCO).

## CONSTRUCTION TEAM

To ensure continuity from the Design Phase through Construction Phase, Ryan Kubat will be the Project Manager for the Construction Phase of the STH 57 Trail project. Ryan has over 12-year of construction administration experience on WisDOT and other federally funded projects.

McMahon has several construction technicians with WisDOT and other federal funded project experience on staff that could be assigned to the project as the on-site person depending on the actual schedule of the project. Mitch Nooyen was our full-time on-site technician during the Egg Harbor STH 42 project and is a candidate to be on the STH 57 Trail project as well.

## RECENT RELATED EXPERIENCE | REFERENCES

The following were all WisDOT Local Program projects that were designed, bid, and constructed in accordance with WisDOT's Sponsor's Guide to Non-Traditional Transportation Project Implementation. These include federally funded projects under the following funding programs: Transportation Alternatives Program (TAP), Congestion Mitigation and Air Quality (CMAQ) Program, and Carbon Reduction Program (CRP).

### STH 42 | SOUTH TRAIL TO CHURCH STREET PROJECT ID 4423-00-00/71

VILLAGE OF EGG HARBOR – Door County, Wisconsin

Contact: Megan Sawyer, Administrator | 920.868.3334 Ext 2

McMahon successfully assisted the Village in obtaining three separate federal funding grants for reconstructing STH 42 which serves as Egg Harbor's main street. Funding included WisDOT TAP, WisDOT CMAQ, and WisDOT Carbon Reduction. STH 42 is on the National Highway System and serves as the primary travel corridor for the Village. The 1.5-miles long project is broken into three sections. The north and south sections received Federal Funding through the TAP project (1.0 mile). The center section is the Village's central business district and is locally funded (0.5 miles). Key aspects of the project improvements are as follows:



- The north and south sections included reconstructing the existing rural facility to a fully urbanized roadway.
- Final urban section for the north and south sections is 34-feet F-F with two travel lanes plus on-street bike lanes, and sidewalk on both sides of street.
- The central business district project includes reconstructing the existing urban section.
- Final typical section in central business district is 46-feet F-F with parking on both sides, bike accommodations, and new sidewalk.
- A new storm sewer system is included on the north and south sections.

## STATEMENT OF QUALIFICATIONS

STH 42 | SOUTH TRAIL TO CHURCH STREET PROJECT ID 4423-00-00/71  
VILLAGE OF EGG HARBOR – Door County, Wisconsin

Storm sewer work in the central business district includes:

- Spot replacement throughout.
- To meet Wisconsin DNR post construction storm sewer requirements, catch basins with sumps were utilized throughout the corridor.
- A new continuous decorative streetlighting system is included through the entire 1.5-mile corridor.

Utility Coordination – The project included burying all overhead facilities within the central business district. Coordination was extensive to ensure all improvements could be accommodated in this confined urban area.

Deliverables included preliminary and final plans, right-of-way plat, traffic management plan, design and environmental reports, and environmental permitting. The project was broken into three separate federally funded and locally let projects. Separate PS&E's and R/W plats were required for each project as well as separate environmental documents and design reports. McMahon provided construction administration services for the project.

### **MARCELLA STREET TRAIL** (Current Project)

VILLAGE OF KIMBERLY - Outagamie County, Wisconsin

Contact: Danielle Block, Administrator/Director of Public Works | 920.788.7500

The Village received federal funding for the project through the WisDOT Transportation Alternatives Program (TAP) for the construction of a shared use path. The project limits are from Kimberly Avenue to Cobblestone Lane for a project length of 1.04 miles. The purpose of the project is to provide multi-modal connectivity within the Village and to improve safety.

The project consists of constructing a 10-foot wide concrete trail along the west side of Marcella Street (adjacent to the STH 441 Freeway) and along the south side of Kennedy Avenue. This trail will complete the bicycle and pedestrian connectivity between the facilities on Kimberly Avenue and the facilities on Kennedy Avenue east of the project limits. ADA compliant curb ramps and crosswalks are being constructed to provide a connection to the existing sidewalk on the opposite side of the street corridors.

There is a railroad crossing of the trail that will be upgraded to provide a new surface on Marcella Street that extends across the width of the new trail. The existing crossing protection devices (flashing signals with crossbucks) will be maintained. ADA compliant curb ramps will be provided where the trail crosses the new railroad surface.

The proposed 10-foot wide trail is located completely within the existing road right-of-way. Temporary Limited Easements (TLEs) for grading were required from each property abutting the trail along the west side of Marcella Street and the south side of Kennedy Avenue to match the proposed grades. TLEs for grading are also needed on the opposite side of the street at proposed curb ramp locations.

McMahon has completed the design and bidding phases of the project and will be starting construction administration services in mid to late April of 2025.

## STATEMENT OF QUALIFICATIONS

## MARCELLA STREET TRAIL (Current Project)

VILLAGE OF KIMBERLY - Outagamie County, Wisconsin

Deliverables included preliminary and final plans, public involvement plan, right-of-way plat, traffic management plan, design reports, environmental documents, and environmental permitting. Extensive coordination with the railroad was also required for both the Marcela Street crossing and the trail crossing, as well as for a crossing located on the designated detour route. In addition, permits needed to be obtained from WisDOT for work in the STH 441 right-of-way.

**CTH CB BIKE-TO-WORK TRAIL | STH 96 TO LEVI DRIVE PROJECT ID 4682-02-00/71**

VILLAGE OF GREENVILLE - Outagamie County, Wisconsin

Contact: Travis Parish, Administrator | 920.757.5151

This CTH CB Trail and Highway improvement project was federally funded through the WisDOT Transportation Alternatives Program (TAP). CTH CB is classified as a minor arterial on the urban system with a typical section that varies between two to four lanes within the project limits. The CTH CB trail is a regional “back-bone” facility that services the west side of the Fox Cities area and is intended to provide an alternate mode of travel to the area businesses. The 0.90-mile section from STH 96 to Levi Drive represents the last section of the CTH CB Trail.

The abutting land use consists of the Village of Greenville Business Park, with Design Drive serving as the main entrance from CTH CB. Access and traffic operational improvements at the intersection of Design Drive and CTH CB were part of the overall required design services for the project but were locally funded. There are two existing navigable stream crossings of the proposed project including a box culvert and a large CMP.

Key aspects of the project include the following:

- To minimize right-of-way and wetland impacts, large sections of the highway needed to be urbanized. The final project was a combination of urban and rural typical sections.
- The proposed trail was constructed on the west side of the highway to minimize mid-block crossings.
- Modifications to the STH 96 intersection and the existing traffic signals were required. Improvements included improved crosswalks and the addition of pedestrian signals with push buttons.
- Turn lanes were added on CTH CB and Design Drive at the main entrance to the business park.
- The navigable stream crossings needed to be extended to accommodate the widening for the trail and the turn lanes. The CMP needed to be upsized and converted to a concrete pipe to avoid the need for flooding easements from the adjacent businesses.

The deliverables for this project included preliminary and final plans, right-of-way plat, traffic management plan, design study report, environmental document, extensive utility coordination, and environmental permitting. Environmental challenges included a 100-year backwater/flooding analysis, with wetland delineation and mitigation. Coordination/approvals with the DNR included the backwater analysis per NR 116, DNR General Wetland Permit (impacts kept under 10,000 SF), and a WPDES Construction Site Stormwater Discharge permit. The USACOE jurisdictional determination stated that the aquatic resources were non-federally jurisdictional.

**CTH CB TRAIL EXTENSION (CTH BB TO STH 96)**

VILLAGE OF GREENVILLE - Outagamie County, Wisconsin

Contact: Travis Parish, Administrator | 920.757.5151

The Village of Greenville received funding through the WisDOT Transportation Alternatives Program for the design and construction of the CTH CB Trail Extension. CTH CB is a primary north-south corridor serving the west side of the greater Fox Cities area. The existing CB pedestrian/bicycle trail, terminated at CTH BB, the border between the Village of Greenville and Village of Fox Crossing. The absence of a trail to the north of BB disconnected the Village of Greenville from the established pedestrian/bicycle network to the south, forcing cyclists and pedestrians wishing to access the existing trails to the south, to utilize the gravel roadway shoulder of 'CB', creating a hazardous environment for both pedestrians/cyclists and motorized vehicles.



Outagamie County plans to widen CTH CB to a 4-lane facility within the next 5 -10 years. As a result, the trail project needed to be designed so the trail would remain in place once the road is widened. This required close coordination with the County throughout the design and construction process. As part of the design, trail alternatives were provided for both the east and the west sides of CB to determine which resulted in fewer impacts. At the Town's direction,



the project needed to be designed to minimize RW acquisition. There were two crossings of navigable waterways as part of the project, as well as various locations of wetland impacts. This required permits from the DNR (NOI and Wetland/Waterway Municipal Permit), US Army Corps of Engineers (Wetland General Permit), and Outagamie County (Conditional Use).

A 10-foot wide pedestrian/bicycle trail along the east side of CTH CB from CTH BB to STH 96 was constructed. Placing the trail along the east side required an at-grade crossing of the road, to provide the connection between the new and existing section which runs along the west side of CB to the south. With the majority of businesses in this project area located on the east side of CB, employees are provided a more readily and safe access to the trail. Also, with the airport located on the west side of the road, construction on the east side avoided restrictions due to FAA and Homeland Security requirements. The signalized intersections of CTH BB, CTH CA, and STH 96 required the addition of pedestrian signal faces and push buttons to improve safety for trail users. A right-of-way plat was also prepared for the project.



## TRAIL CONNECTION | FOX RIVER TRAIL TO WEBSTER AVENUE

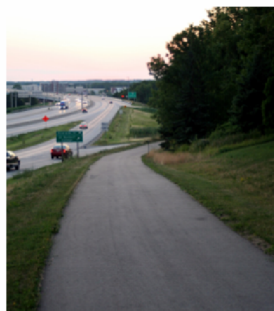
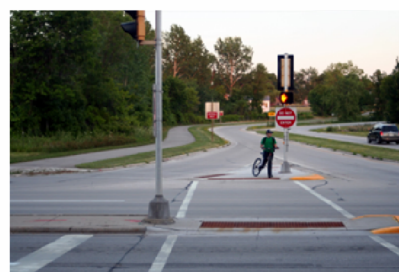
VILLAGE OF ALLOUEZ - Brown County, Wisconsin

Contact: Chris Clark, Parks, Recreation & Forestry Director | 920.448.2800 Ext 104

The Village received federal funding for the project through the WisDOT Transportation Alternatives Program for the design and construction of a shared-use path along the north side of STH 172 and the west side of STH 57 to connect the Village of Allouez's existing pedestrian/bicycle system along S. Webster Avenue to the Fox River Trail.

Environmental challenges for the project included the acquisition of a permanent limited easement from a parcel of land that is occupied by the Fox River State Recreational Trail and from a portion of Heritage Hill State Park that is located along the west side of STH 57. Both parcels are under the purview of Section 4(f) and the Fox River Trail parcel is also under the purview of Section 6(f) of the FHWA's Department of Transportation Act. Construction adjacent to these historic and park properties required extreme care in order to minimize impacts.

This project provided a connecting link between the Village of Allouez's existing pedestrian/bicycle system and the Fox River Trail, by creating a safe pedestrian/bicycle route across STH 57 at the signalized intersection of STH 57 and the STH 172 on-ramp/ off-ramp/frontage road, and by providing a connecting link between Heritage Hill State Park and the Fox River Trail. The final trail typical cross section consisted of a 10-foot wide asphalt surface and 2-foot turf shoulders. The total project length is 0.554 miles; a right-of-way plat was required.





## **NOE ROAD BICYCLE & PEDESTRIAN TRAIL**

TOWN OF HARRISON - Calumet County, Wisconsin

Contact: Chad Pelishek, Village Manager | 920.989.1062

The Town of Harrison received federal funding for a 10-foot wide asphalt, multi-modal trail along Daffodil Drive and Noe Road. The south half of the alignment runs along an urban section with storm sewer, curb and gutter and sufficient right-of-way for trail construction. The north half of the alignment runs along an existing rural section with open ditches, requiring construction of storm sewer and curb and gutter, along with acquisition of grading easements. The trail connects several subdivisions with a centrally located park. Future extensions will connect additional subdivisions as well as two elementary schools. The primary focus of the project was to provide safe travel for pedestrians as well as cyclists.



Design of a proposed off-road multi-modal trail along an existing roadway in a fully developed urbanized area. During preliminary design, an archaeological burial site was discovered within the proposed trail alignment. Alternative solutions were explored to avoid disturbance of the site. The 10-foot asphalt trail alignment includes twenty-five roadway and driveway crossings. Designing the proposed trail profile to properly drain properties while matching into existing driveways and roadways was critical.

This project was designed in accordance with all requirements of the WisDOT Facilities Development Process. The 10-foot wide trail was designed so that traffic was maintained during construction to limit disruption to the neighborhood. This project consists of 5,400 LF of asphalt multi-modal trail, 2,600 SF of concrete sidewalk, pavement marking and trail signing for roadway and driveway crossings, 2,500+ LF of storm sewer from 8-inch to 42-inch pipe and up to 60-inch dia. manholes, and 3,000+ LF of mountable concrete curb and gutter.

## **ROBERTS PARK TRAIL & BOARDWALK**

VILLAGE OF WILD ROSE - Waushara County, Wisconsin

Contact: Perry Drmolka, DPW (Retired, current Board Member) | 920.765.1779

The Village of Wild Rose received federal funding to construct a shared use path to connect the Village's sidewalk system along Main Street to features within Roberts Park.

A portion of the Roberts Park Trail passes adjacent to River Street and crosses wetlands and the Pine River. Due to the dual use of walking and biking, the boardwalk was required to be 12 feet wide. The boardwalk needed to be designed and detailed to minimize disturbances to the wetlands. The portion of the boardwalk that crossed the Pine River needed to span 42 feet in order to not infringe on the existing flood way.



The project consisted of 3,200 feet of 10 foot wide asphalt trail and concrete sidewalk plus 500 feet of boardwalk. Pedestrian bridge span (within boardwalk) was 42 feet. The paved recreation trail provides access to the Roberts Park Pavilion and sports field area, canoe launch area and access to the Wild Rose Mill Pond.

**CTH CB RECREATION TRAIL PEDESTRIAN / BICYCLE TRAIL**

VILLAGE OF FOX CROSSING - Outagamie County, Wisconsin

Contact: Joe Hoechst, DPW | 920.720.7110

The CTH CB Pedestrian / Bicycle Trail parallels CTH CB in the Village of Fox Crossing. This one-mile section of trail extends from Shady Lane to CTH BB and is a primary link in the regional trail system connecting the Village of Fox Crossing with the rest of the Fox Valley area. The Village of Fox Crossing received Federal funding for the project through the Transportation Alternatives Program for design and construction. As part of the funding requirements, the project was designed and constructed in accordance with WisDOT's Sponsor's Guide to Non-Traditional Transportation Project Implementation.



This trail system provides a connecting link between residential, commercial and recreational areas within the region encouraging the use of alternate modes of transportation.

The trail consists of a 10-foot wide asphalt concrete surface. Highway bridges along the route were designed to include a pedestrian lane. Signalized intersections along the route were designed to include a separate pedestrian signal display. The trail was designed to utilize the Village of Fox Crossing's Municipal Building parking lot as access.



This project was designed in accordance with the guidelines required by AASHTO's Guide for the Development of Bicycle Facilities and WisDOT's Facilities Development Manual. McMahon provided various professional services for this project, including the initial planning and mapping services for the trail and highway; preparation of the environmental document for approval by the Federal Highway Administration; preparation of the construction plans and documents, and construction administration.

## SAFE ROUTES TO SCHOOL TRAIL & INTERSECTION IMPROVEMENTS

CITY OF BRILLION - Calumet County, Wisconsin

Contact: Patty Schreiber, City Administrator | 920.756.2250

The City of Brillion received federal funding through the WisDOT (TAP) for the design and construction of a shared-use path along the south side of E. National Avenue.

The City's Safe Routes to School Committee and East Central Wisconsin Regional Planning Commission had identified the need for a safe route along East National Avenue within the "Brillion Area Safe Routes to School Plan". It was determined that a shared-use path would be constructed along East National Avenue to provide a safe connection between the City's existing sidewalk system and the grade school.

This project constructed approximately 1,200 lineal feet of shared-use path that included two at-grade street crossings. The shared-use path, consisting of a 10-foot wide asphalt surface and 2-foot turf shoulders, begins where the City's existing sidewalk system ends at Meadowood Lane and continues easterly along the south side of East National Avenue, ending at the parking lot of Trinity Evangelical Lutheran Church and School.

East National Avenue could not be urbanized. An off-road shared-use path had to be designed within the existing right-of-way to the maximum extent possible. The existing right-of-way was narrow with steep roadside ditches and utility poles present throughout the limits of the project. A right-of-way plat was developed for the acquisition of the easements that were required from several parcels. The shared-use path had to be designed to minimize the width of the easements and avoid negative impacts to these parcels.



## STATEMENT OF QUALIFICATIONS

**CE UNDERPASS BICYCLE & PEDESTRIAN TRAIL CONSTRUCTION**

VILLAGE OF KIMBERLY - Outagamie County, Wisconsin

Contact: Dave Vandervelden, Street Superintendent  
(Retired, Currently on Planning Commission) | 920.788.7500

The Village of Kimberly was granted federal funding (TAP) to construct a pedestrian underpass structure under CTH CE so bicyclists and pedestrians could avoid crossing the dangerous intersection of CTH CE and Railroad Street. With the Heart of the Valley YMCA and area schools located just to the north of CTH CE, and a business park plus residential development on the south side of CTH CE, it was determined that an underpass would be the best way to provide a safe route for pedestrians and bicyclists to cross CTH CE.



In order to provide adequate sight distance and grades for the approach to the tunnel, the existing trail needed to be realigned and lowered. This also required constant coordination with utilities in the area. Nearly 30,000 vehicles per day travel this section of CTH CE, which made construction staging and traffic control extremely important while limiting the adverse impacts to the travelling public as much as possible.



This project consisted of constructing a box culvert structure under CTH CE and the realignment and reconstruction of the CTH CE trail. In addition, approximately 260 L.F. of retaining walls at the south approach were required to limit impacts to private utilities. Lighting was included throughout the structure. A right-of-way plat was required for the project.





*Statement of Qualifications to Provide*  
**Construction  
Services for the  
Construction  
of Highway 57  
Trail Project**



*Prepared for*  
**Julie Schmelzer,  
Village  
Administrator  
Village of Sister Bay**  
April 11, 2025

---

**Ryan Trzinski, P.E.**  
Robert E. Lee & Associates, Inc.  
1250 Centennial Centre Blvd  
Hobart, WI 54155  
920-662-9641  
rtrzinski@releeinc.com  
releeinc.com

Greetings,

# Village of Sister Bay

April 11, 2025

Julie Schmelzer, Village Administrator  
VILLAGE OF SISTER BAY  
2383 Maple Drive  
Sister Bay, WI 54234  
julie.schmelzer@sisterbaywi.gov

RE: Statement of Qualifications – Construction Services for the Highway 57 Multi-Use Trail Project

Dear Ms. Schmelzer:

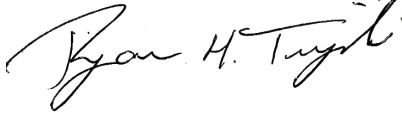
Robert E. Lee & Associates, Inc. is pleased to submit our qualifications to provide construction services for the Hwy 57 Multi-Use Trail project. We recognize the value this project holds for the Village of Sister Bay, enhancing connectivity, safety, and recreational opportunities for the community and visitors alike. We are excited for the opportunity to contribute our expertise and commitment to excellence in support of this meaningful project.

Leading our construction services team will be Ryan Trzinski, our Construction Services Manager, who brings 17 years of experience in WisDOT transportation construction and municipal infrastructure oversight. Ryan has successfully managed a wide range of projects including rural and urban roadway improvements, bridge construction, recreational trails, and environmentally sensitive enhancements. His deep understanding of WisDOT's construction processes, paired with a proven ability to coordinate effectively with contractors and municipal staff, ensures strong project execution from pre-construction through closeout.

Robert E. Lee & Associates is proud to offer a hands-on, responsive construction management approach tailored to the needs of each community we serve. Under Ryan's leadership, our team will provide thorough, proactive oversight that keeps the project on schedule, within budget, and aligned with both Village goals and TAP program requirements. Please don't hesitate to contact us if you need any additional information at 920-662-9641. Thank you for considering our team—we look forward to the opportunity to work with the Village of Sister Bay to bring this exciting project to life.

Sincerely,

ROBERT E. LEE & ASSOCIATES, INC.



Ryan Trzinski, P.E.  
Construction Services Manager



Jared Schmidt, P.E., V.P..  
Civil/Municipal Engineering Manager



Table of  
Contents

Section 1 4

About Us

Why choose REL?

Our history, our missions, plus highlighted roles of your lead team.

Section 2 6

Our Team

Construction Team and Resumes

Details about our team leading your project.

Section 3 13

Projects

REL's construction management approach and projects similar to yours, showcasing our qualifications and experience.

Section 4 17

References

Review our references.

Our Vision for  
the Highway 57 Trail  
Construction

The Highway 57 Trail construction is to deliver a smooth, efficient project with minimal disruption, clear communication, and a strong focus on public and worker safety. We are committed to maintaining safe access for all users while building a high-quality trail that the community can enjoy for years to come.





# Firm Information



## Introductions

Established in 1956, Robert E. Lee & Associates (REL) is a premier consulting firm specializing in civil and environmental engineering, surveying, and natural resources services. Our comprehensive spectrum of services offers an integrated approach to project management for our clients throughout Wisconsin and Michigan. Renowned for our responsiveness and client-focused expertise, our mission is to be a quality first service company dedicated to building enduring relationships.

## Quality Service Since 1956

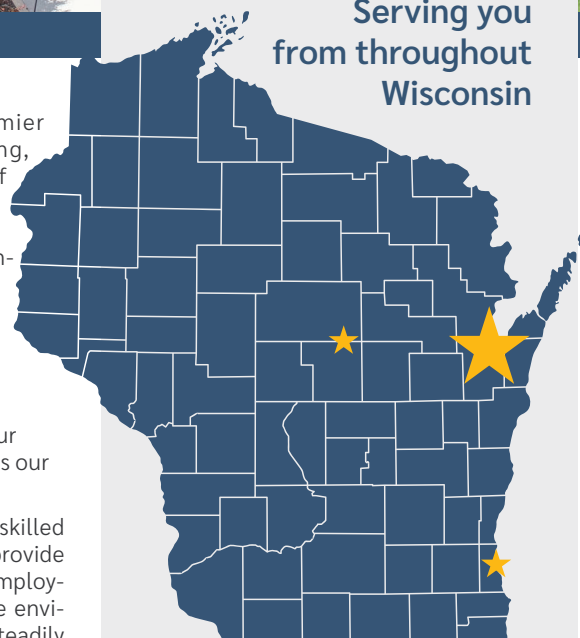
REL's philosophy is a **quality first** service company dedicated to fostering long-term relationships with our clients. At REL, we foster a proactive can-do attitude ensuring our customers' requests are not just met but exceeded. Our overarching goal is to establish ourselves as the firm that consistently satisfies our clients by delivering quality products in a timely manner.

We achieve these objectives by attracting and retaining hardworking, highly skilled professionals. As a company, we invest in new technology and education to provide our clients with the highest quality results and to continually challenge our employees. We see ourselves as partners with our clients, the community, and the environment. We firmly believe that through this philosophy, our company will steadily expand but thrive, driven by our commitment to excellence.

## Major Disciplines Provided

Surveying	Environmental Engineering
Municipal Engineering	Ecological Services
Utility Design	Water/Wastewater Engineering
Transportation Engineering	Water/Wastewater Certified Operations
Permitting	Construction Administration Services
Soils Investigation	Native Habitat Design/Maintenance
GIS/Asset Management	Storm Water Management/Floodplain

Serving you  
from throughout  
Wisconsin



releeinc.com | 920-662-9641  
1250 Centennial Centre Blvd  
Hobart, Wisconsin 54155

About Us.

# Why REL?

Robert E. Lee & Associates, Inc., based in Green Bay, Wisconsin, is a locally owned, full-service consulting firm offering specialized expertise across *civil and municipal engineering, construction administration, environmental compliance, ecological services, GIS/mapping, UAV drone data collection, surveying, wastewater and water systems, storm water management, grant assistance, planning and development, agricultural engineering, and bridge inspections*. We proudly serve clients throughout Wisconsin, providing responsive, client-focused solutions that prioritize quality and long-term relationships at exceptional value.

Our Aim.

## Our Mission



### Quality

We uphold the highest standards of engineering quality assurance, with every project executed with precision, safety, and reliability.



### Availability

Our aim is to balance workloads and propose on projects only when our staff is fully available to ensure timely and efficient execution.



### Communication

At REL we prioritize clear and consistent client communication so that every project aligns with our clients' expectations and goals.



### Dependable

Dependability is at the core of our work, providing reliable results and consistently fulfilling our clients' needs.

## Our Team

Our team is ready to support the Highway 57 Multi-Use Trail Construction project with the expertise and commitment needed for its successful completion. We are fully prepared to allocate resources and meet project deadlines efficiently.

**Our certified professionals offer specialized knowledge and expertise...**

### Construction Surveying

Our certified professionals offer specialized expertise in construction staking to ensure accurate, on-site execution of project plans. Our survey team supports construction efforts with precise layout services for utilities, drainage systems, buildings, roadways, and bridges—helping to keep projects on track and built to exact specifications.

### Field Maps Photo Points Viewer

Our GIS professionals support the construction team by leveraging Esri ArcGIS Online and Field Maps integration, allowing real-time access to field data and project mapping for all construction staff and our clients. Tools like the Survey Photo Points Viewer enhance coordination by providing visual context and accurate location data for more efficient decision-making on site.



Meet your

# Lead Construction Team

Our construction management approach is built on proactive communication, thorough oversight, and a commitment to quality from start to finish. Ryan Trzinski will serve as the Construction Engineer, bringing 17 years of transportation and municipal construction experience to lead overall project oversight. Brandt Bishop will lead construction administration, with responsibilities including documentation, coordination, and communication to keep the project running smoothly and in line with all requirements. Supporting the team both in the field and office are Cara Gable and Rachel Schroeder, who bring strong technical backgrounds and attention to detail for accurate reporting, tracking, and on-site support throughout construction. Brandt will also serve as the primary point of contact between the client and the contractor, facilitating clear communication, addressing concerns promptly, and keeping the project aligned with the client's goals and expectations.

Resumes of our lead staff are provided in the following pages.



Julie Schmelzer  
Administrator  
**Village of Sister Bay**



Ryan Trzinski, P.E.  
**Construction Services Manager**  
• 17 years  
• Constructibility Reviews



Brandt Bishop, CCM  
**Construction Project Manager**  
13 years



Cara Gable  
**Construction Engineering Technician**  
23 years



Rachel Schroeder  
**Construction Engineering Technician**  
2 years





## Construction Services Manager

# Ryan Trzinski, P.E.

### UW - Platteville

Bachelor of Science  
Civil Engineering, 2007

## Experience and Expertise

Ryan's expertise is rooted in a well-rounded background that blends technical knowledge with practical field experience across a variety of project types. His work extends beyond traditional roadway construction to include complex environmental and recreational projects, where he integrates engineering precision with community-focused design. His involvement in dredging & environmental enhancement demonstrates his ability to navigate regulatory frameworks while prioritizing sustainability and habitat restoration. His leadership in both rural and urban settings highlights his adaptability, whether he's managing bridge construction in a high-traffic corridor or coordinating multi-use trail development in recreational spaces. With a deep understanding of construction administration, he consistently delivers project goals.

## Professional Engineer

Wisconsin, Michigan

Certified Bridge Inspector - WI

## Key Areas of Expertise

17 years of experience in Civil Engineering, specializing in the following areas:

- Certified Bridge Inspector
- Complex Traffic Staging
- Rural Roadway Design
- Urban Roadway Design
- Safety Improvement Projects
- Pavement Design
- Construction Project Engineer/Leader
- Agency Permitting for Local, State, Federal
- Recreational Trail Design

## Roles and Responsibilities

As a Construction Engineer with 17 years experience, Ryan plays a critical role in managing and overseeing a wide range of transportation & municipal infrastructure projects. He serves as a WisDOT Construction Project Leader and Resident Project Representative, responsible for daily on-site construction oversight, contractor coordination, and ensuring compliance with project specifications. Ryan is deeply familiar with the WisDOT design process and uses that knowledge to lead constructability reviews, manage contract administration, review submittals, and track quantities. His experience spans rural roadway, urban street, & bridge construction, where he ensures each project meets quality, safety, & scheduling goals from start to finish.

Ryan also brings strong capabilities in municipal engineering & recreational planning. He has overseen utility installations, pavement improvements, & storm water management systems, ensuring seamless integration with community infrastructure. Ryan also has experience managing dredging & environmental enhancement projects, working closely with regulatory agencies to meet environmental standards. His comprehensive approach, ensures a successful project.

## Overland Park Trail

Ryan led construction staging and oversight for the 10-foot-wide stamped concrete trail in Overland Park, enhancing connectivity and recreation within the Centennial Centre Blvd development.

- Coordinated staging to minimize disruptions
- Oversaw ADA-compliant curb ramps and sidewalk transitions
- Managed installation of benches, pergolas, landscaping, and irrigation features

## Construction Administration Projects

- 4409-12-71, STH S Bridge over Ahnapee River, Kewaunee Cty
- 1009-33-21, Region-wide Deck Sealing, NE Region
- 9265-05-71, CTH GE Bridge over Dutchman's Creek, Brown Cty
- 1009-39-36 & 37 STH/CTH/Rd Pavement Marking/Signing
- 4140-35-71, STH 42 Ephraim Shoreline Rest. & Stabilization
- 1009-33-26/33 Region-wide Deck Sealing, NE Region
- 1227-08-73 STH 172 - Atkinson Dr, IH 43 Bridge Improvements
- 4125-14-60 Kewaunee Brown County Line, CTH Resurfacing



## Construction Project Manager

# Brandt Bishop

### UW - Platteville

Bachelor of Science  
Industrial Technology/Building  
construction Management, 2015

## Experience and Expertise

Brandt Bishop brings strong expertise in construction administration and inspection, with experience overseeing municipal and civil infrastructure projects such as storm sewers, sanitary sewers, water mains, and street reconstruction. He manages construction operations by coordinating with contractors, conducting field inspections, tracking pay quantities, and ensuring compliance with project plans and specifications. Brandt also handles RFIs, change orders, shop drawing reviews, and project documentation, helping maintain quality, schedule, and communication across all phases of construction.

### Key Areas of Expertise

13 years of experience specializing in the following areas:

- Construction observation and administration
- Contractor and client coordination
- Shop drawing and submittal review
- Change order preparation and processing
- Responding to construction RFIs
- Field staking and layout
- Pay quantity tracking
- Project documentation and reporting
- Compliance with plans and specs
- Utility coordination and inspection

## Roles and Responsibilities

As a Construction Administrator, Brandt oversees day-to-day construction activities to ensure projects are executed according to design specifications, schedules, & budget requirements. As the primary liaison between contractors, engineers, & municipal clients, he manages communication & resolves issues. Brandt reviews shop drawings, responds to RFIs, prepares & processes change orders, and tracks pay quantities. He also conducts site inspections to verify quality & compliance with plans, coordinates field staking, & maintains accurate documentation throughout the project lifecycle. His proactive approach helps mitigate delays and ensures timely decision-making to keep projects on track.

Brandt's hands-on experience with a variety of municipal infrastructure projects (storm and sanitary sewers, water mains, road reconstructions, and utility coordination) equips him with the technical knowledge & field insight for effective construction administration. A background in civil engineering and familiarity with construction processes enable him to anticipate challenges, provide practical solutions, & maintain strong working relationships with all project stakeholders.

## Northeast Asphalt Project Management Experience

Brandt has managed infrastructure projects for Northeast Asphalt as both a general contractor and subcontractor, coordinating with municipalities and owners on budgeting, scheduling, and long-term planning.

- Developed and maintained project schedules to ensure timely and cost-effective completion.
- Worked closely with stakeholders to align budgets, infrastructure goals, and regulatory requirements.

## 2024 Construction Administration Projects

- Church Rd Subdivision – Luxemburg, WI
- Crest Estates Subdivision – Pulaski, WI
- City of De Pere Fall Restraint – De Pere, WI





## Construction Engineering Technician

# Cara Gable

### Northeast Wisconsin Technical College

Associate Degree  
Civil Engineering, 2013

## Experience and Expertise

Cara brings extensive experience & expertise to her role as a construction administrator, supported by over a decade in civil engineering and construction-related positions. As a Civil Engineering Technician, Cara has conducted comprehensive construction inspections on municipal infrastructure projects (water main, sanitary and storm sewer, curb and gutter, pavement, and sidewalks). She ensures compliance with design plans & specifications, coordinating field activities (water shutdowns with residents and businesses), and maintains meticulous project records, daily reports, and as-built drawings using CAD. Cara's background in lab testing and excavation enhances her ability to assess field conditions and provide practical, data-informed recommendations, making her a skilled and well-rounded construction administrator.

### Key Areas of Expertise

23 years of experience specializing in the following areas:

- Construction observation and documentation
- Utility installation oversight (water, sanitary, storm)
- Construction control staking and surveying (GPS & Total Station)
- Storm water management and erosion control
- Soil and material testing (ASTM standards)
- CAD drafting and as-built preparation
- Field investigations and reporting
- Strong knowledge of municipal infrastructure projects
- Effective coordination with contractors and stakeholders

## Roles and Responsibilities

As a construction administrator, Cara is responsible for overseeing all phases of municipal infrastructure projects to ensure they are completed accurately and to specifications. She conducts on-site inspections of utility installations, pavements, sidewalks, and storm water systems, verifying proper grades, referencing markers, and ensuring compliance with design plans. She coordinates with contractors and stakeholders during key activities like water shutdowns and maintains detailed project documentation, daily reports, and as-built drawings using CAD. Cara also performs construction control staking, utility locating, and erosion and sediment control oversight.

Cara's broad background strengthens her ability to manage construction projects effectively. With 16 years of excavation experience and a strong foundation in lab testing and quality control, she brings a practical understanding of materials and site conditions. Her skills in surveying, operating equipment, and interpreting engineering plans allow her to bridge the gap between design and construction. This hands-on experience, combined with her technical expertise, ensures projects are executed efficiently and to high standards.

### STH 47/Main Street

Cara provided on-site construction observation for the sanitary sewer and water main reconstruction along STH 47/Main Street in the Village of Black Creek.

- Reviewed plans and specifications and field conditions ahead of contractor's work to minimize impacts to the project schedule
- Assisted Village staff with communication to local residents and businesses as needed
- Documented field work as completed and found un-locatable utilities by dye testing methods to trace sewer laterals and assess low-pressure water service connections

### Hingiss Park Pedestrian Bridge

Cara provided on-site construction observation services for the installation of a new pedestrian bridge in the City of Kiel. It crosses the Sheboygan River in the heart of the City.

- Coordinated construction activities between the contractor and REL on behalf of the City
- Assisted with pay request and quantity clarification
- Documented field work as completed



## Construction Engineering Technician

# Rachel Schroeder

### Northeast WI Technical College

Associates

Civil Engineering Technician, 2024

## Experience and Expertise

Rachel is an experienced construction administrator who works closely with project owners, contractors, and other team members to keep projects running smoothly. She helps make sure everyone stays on the same page by keeping open communication and making sure the work follows the project plans. Rachel supports contractors by answering questions, helping interpret drawings, and organizing progress meetings to keep things moving forward.

She also keeps a close eye on the field work to make sure it meets the expected standards. On top of that, she documents daily job site activities and helps project managers with paperwork like field orders and change orders. Her well-rounded knowledge of construction projects makes her a valuable part of any team.

## Key Areas of Expertise

2 years of experience specializing in the following areas:

- Resident project representative
- Construction observation services
- Site excavation
- Surveying using GPS and Total Station
- Install residential and industrial utilities

## Roles and Responsibilities

As a Construction Technician supporting construction administration, Rachel plays a key role in monitoring daily site activity to ensure the project stays on track and meets quality expectations. She regularly visits the job site to observe progress, verify that work aligns with the project plans and specifications, and document daily activities such as weather conditions, contractor personnel, and completed tasks. Her attention to detail helps ensure accurate records and provides valuable support to the broader project team.

Rachel also acts as a communication link between contractors, project managers, and owners, helping to keep everyone informed and aligned throughout the construction process. She assists in interpreting construction drawings, answering contractor questions, and supporting coordination in the field. Additionally, she helps prepare and process field orders and change orders, tracks quantities for payment, and participates in progress meetings. Her hands-on involvement and proactive approach contribute to smooth project execution and effective issue resolution.

## City of Algoma's Division Street

Rachel provided construction oversight for the City of Algoma's Division Street Utility and Street Construction project, coordinating with contractors and monitoring daily progress to keep the project on track and within budget.

- Verified work was completed according to approved plans, specifications, and standards.
- Communicated with the city and contractor to resolve on-site issues efficiently.

## 2024 Construction Administration Projects

- City of Algoma Division Street Utility and Street construction
- Town of Ahnapee Washington Road Culvert replacement
- Village of Wrightstown CTH U Storm sewer
- Village of Wrightstown Golf Course Drive Water and Sanitary
- Village of Wrightstown Poplar street Utility and Street construction

# Workload and Staffing Capacity

Our Construction Administration team has the capacity and availability to fully support this project. Should construction occur in 2026, our CA staff currently has no conflicting commitments, allowing for full focus on the project. Looking ahead to Fall 2025, our team maintains approximately 70% availability, providing ample flexibility to support early coordination, pre-construction meetings, or any potential early-start field work. We are confident in our ability to dedicate the necessary resources to deliver responsive, high-quality construction oversight throughout the project timeline.





# Construction Management

Our construction management approach for the Highway 57 Multi-Use Trail project is structured to ensure quality execution, clear communication, and compliance with TAP grant requirements. We will manage the project with a strong focus on safety, transparency, and coordination with all stakeholders, while adhering to WisDOT and FHWA standards. Our team is fully prepared to provide the resources and expertise needed to support successful project delivery for the Village of Sister Bay.

## 1. Construction Oversight and Daily Observation

Led by Brandt Bishop, our team will perform daily on-site observations to verify that construction meets project specifications, safety standards, and WisDOT requirements. Observation activities will cover grading, utility installation, paving, trail surfacing, drainage elements, and erosion control measures. Cara Gable and Rachel Schroeder will support field documentation, photo logs, material verification, and adherence to storm water BMPs.

## 2. Construction Administration and Documentation

Brandt Bishop will serve as the Lead Construction Administrator and primary point of contact between the Village, contractor, and WisDOT. He will manage daily construction logs, pay estimate tracking, material submittals, contract modifications, and DBE reporting as required under the TAP program. Our team will maintain complete and organized project files, including conformance with WisDOT's Field Office Packet (FOP) and Civil Rights compliance documentation. Ryan Trzinski will oversee quality control and assurance for project documentation and reporting, maintaining accuracy, consistency, and compliance with applicable standards and requirements.

## 3. Coordination and Communication

Effective communication is central to our approach. Our team will attend and facilitate pre-construction, progress, and coordination meetings, ensuring that stakeholders—including Village staff, WisDOT representatives, and the contractor—remain informed and engaged throughout the project. We will proactively identify and resolve issues, coordinate with utility providers, and support public outreach as needed to maintain community awareness and minimize disruption.

## 4. TAP Grant Compliance and Reporting

We understand the importance of meeting TAP (Transportation Alternatives Program) grant requirements. Our staff is experienced with federally funded project administration and will ensure compliance with all documentation, reporting, and audit-readiness procedures. This includes DBE tracking, Buy America requirements, certified payroll review, wage rate compliance, and submission of all required reporting to WisDOT in coordination with the Village.



*Brown County*

# Fox River Trail

## Porlier Street - CTH X

REL provided design services and construction oversight for improvements to the Fox River State Recreational Trail, a heavily used TAP-funded corridor in Brown County. Work included asphalt pavement replacement, restoration of 2-foot shoulders, upgraded ADA-compliant ramps with detectable warnings, and center-line striping for two-way traffic. Two horizontal curves were retained with a reduced design speed of 16 MPH to meet existing site constraints and state bike facility standards. The project enhanced safety, accessibility, and long-term durability for trail users.



**Project Owner:** Brown County Parks and Recreation Department

## Project Details

The Fox River State Recreational Trail, a key alternative transportation route from Green Bay to southern Brown County, has served over 2 million users since 2001. As a Transportation Alternatives Program (TAP) project, the trail required much-needed improvements to address pavement deterioration, eroded shoulders, and outdated ADA compliance standards.

- **Pavement Replacement:** Removal of 2 inches of existing asphalt and 1 inch of base course; replacement with 3 inches of new asphaltic pavement.
- **Shoulder Restoration:** Repair of aggregate shoulders to the original 2-foot width.
- **Safety Enhancements:** Installation of curb ramps with detectable warning fields at crossings and new centerline pavement markings for two-way traffic.
- **ADA Compliance:** Reconstruction of pedestrian ramps and compliance upgrades at intersections.
- **Design Adjustments:** Retention of two horizontal curves with a design speed of 16 MPH due to existing constraints, meeting Wisconsin Bicycle Facility Design Manual standards.

## Coordinating Agencies

- WisDOT
- WDNR
- City of De Pere
- Utilities
- Local Stakeholders/Residents

## Project Benefits

- Provides a safer, more reliable non-motorized transportation route.
- Enhances accessibility and compliance with modern ADA standards.
- Improves overall safety with better crossing visibility and pavement markings.

## Services Provided

- REL provided comprehensive services including topographic survey, design, TAP funding forms, PS&E documents for bidding, and construction oversight.

**Project Reference:** Matt Kriesse 920-448-4464



## Project Staff

Ashley Nelson, P.E.  
Project Manager  
anelson@releeinc.com  
920-662-9641  
releeinc.com



# Cherrywood and Northwoods Drive

## Project Highlights

Cherrywood Drive's utility and street project included 1,050 linear feet of urban roadway with water main, sanitary sewer, and storm sewer with storm water management.

- Cherrywood and Northwoods Drive projects exemplify REL's expertise in municipal roadway development.
- This project showcased our proficiency in coordinating with developers and municipalities, but also demonstrated our adaptability, as it was driven by the needs of the multi-family development.
- These projects exemplify our commitment to overcoming challenges while delivering tangible benefits to the communities we serve.



Project Owner: Village of Sister Bay

## Project Details

- We collaborated with WisDOT to integrate a new connection to STH 57.
- Complementing Cherrywood Drive, Northwoods Drive project included a 720 linear-foot roadway, combining urban and rural elements while looping water main and connecting sanitary sewer systems.
- Together, these two projects have ensured the Village of Sister Bay vital connectivity between existing, planned, and future developments.
- During preliminary design, REL encountered high bedrock conditions, which could have significantly impacted project costs and timelines.
- Through planning and designing for a common trench installation of sanitary sewer and water main, we minimized the need for extensive bedrock blasting.

## Services Provided

- Topographic Survey
- Engineering Design
- Permitting
- Bidding
- Construction Administration
- Construction Observation
- Construction Staking
- As-built Surveying

## Coordinating Agencies

- WisDOT
- WDNR

## Key Contributors

- Jennifer Liimatta, P.E.
- Jared Schmidt, P.E., V.P.
- Ryan Trzinski, P.E.

Project Reference: Julie Schmelzer 920-854-4118



## Project Staff

Jennifer Liimatta, P.E.  
Project Manager  
jliimatta@releeinc.com  
920-662-9641  
releeinc.com



*Village of Hobart***Overland Park****Project Highlights**

Overland Park, a key feature of the Centennial Centre Blvd mixed-use development, highlights the integration of thoughtful design and community amenities. This 270-acre development, anchored by the 1.5-mile, 4-lane Centennial Centre Blvd, supports \$300 million in economic development and 1,500 new residents. As part of the overall project, over 20,800 linear feet of multi-use trails were designed to connect residential neighborhoods with commercial spaces. Overland Park features a 10-foot-wide colored concrete trail that links curved seating areas and wood pergola shade structures, creating inviting spaces for public use. The trail transitions smoothly into existing sidewalks, with ADA-compliant curb ramps at roadway crossings to ensure accessibility for all users. This design reflects a commitment to enhancing community connectivity, accessibility, and recreation.



**Project Owner:** Village of Hobart

**Project Details**

- 10-foot wide stamped colored concrete multi-use path
- Stone accent benches and pergolas
- Landscaping and Irrigation Plan
- Wooden Pergola Shade Structure
- ADA Compliant curb ramps

**Key Contributors**

- Troy Hewitt, PLS and Scott DeBaker, PLS - Surveying
- Aaron Breitenfeldt, P.E. and Jared Schmidt, P.E. - Civil/Transportation Engineering
- Brandon Robaidek, P.E. - Storm Water Management
- Alan Gustafson, PG, Environmental Compliance
- James Havel, Assured Delineation, Ecological Services
- Ryan Trzinski, P.E., Construction Administration Services
- Anna Peters, GIS, Asset Management

**Services Provided**

- Progressive Project Management
- Comprehensive Design
- Cost-Saving Initiative
- Topographic Surveying
- Public Involvement
- Wetland Delineation/Tree Inventory
- Environmental/Archaeological Review
- Storm Water Design
- Agency Coordination
- Permitting
- Bidding/Construction Oversight Services

**Coordinating Agencies**

- WisDOT, WDNR, EPA
- Private Utilities
- Local Stakeholders/Residents

**Project Reference:** Aaron Kramer 920-869-3804

**Project Staff**

Jared Schmidt, P.E.

Project Manager

jschmidt@releeinc.com

920-662-9641

releeinc.com

*Village of Sister Bay***Mill Road Utility, St, Electrical & Lighting****Project Highlights**

Urbanization of 900 feet of roadway in the heart of downtown Sister Bay from Maple Drive to STH 57/N Bay Shore Drive. Coordinated with Berners-Schober Associates, Inc. - Street lighting/electrical

- Sidewalks
- Curb Ramps
- Drainage Improvements
- Off-street parking
- Intersection Improvements
- Utility coordination
- Street Lighting
- Storm sewer sized for planned future urbanization

- Coordinated storm sewer connection to private development on northwest corner of Maple Drive and Mill Road.



Project Owner: Village of Sister Bay

**Innovations**

- Realigned Post Office Lane intersection to come in perpendicular to Mill Road--increasing safety for users.
- Coordinated with utility companies to transition from overhead lines to underground to add street lighting.
- 10 curb ramps provide connectivity throughout corridor.
- Construction completed a week early, under budget, and ready for Memorial weekend tourism.

**Challenges**

- Existing roadway was flat and ponded water in front of off-street parking. Shifted the roadway's low point while being mindful of tight elevation constraints.
- High bedrock and plethora of underground utilities made placing storm sewer utility challenging and was placed strategically to minimize conflicts.

**Services Provided**

- Topographic survey
- Engineering
- Transportation plat and legal description
- Engineering design
- Storm water management
- Bid package
- Construction administration, observation, and record drawings

**Key Contributors**

- Jennifer Liimatta, P.E. - Project Manager
- Scott DeBaker, PLS - Survey
- Michael Leidig, EIT - Storm Water Management
- Jared Schmidt, P.E. - QA/QC
- Scott Van Calster, Construction Admin. and Observation
- Alan Gustafson, P.G. - Geotechnical

Project Reference: Julie Schmelzer 920-854-4118

**Project Staff**

Jennifer Liimatta, P.E.

Project Manager

jliimatta@releeinc.com

920-662-9641

releeinc.com



Village of Sister Bay

# References

**Brown County Parks Department**  
*Matt Kriese*  
Parks Director  
2024 Lakeview Drive  
Suamico, WI 54173  
920-448-4464  
Matt.Kriese@browncountywi.gov

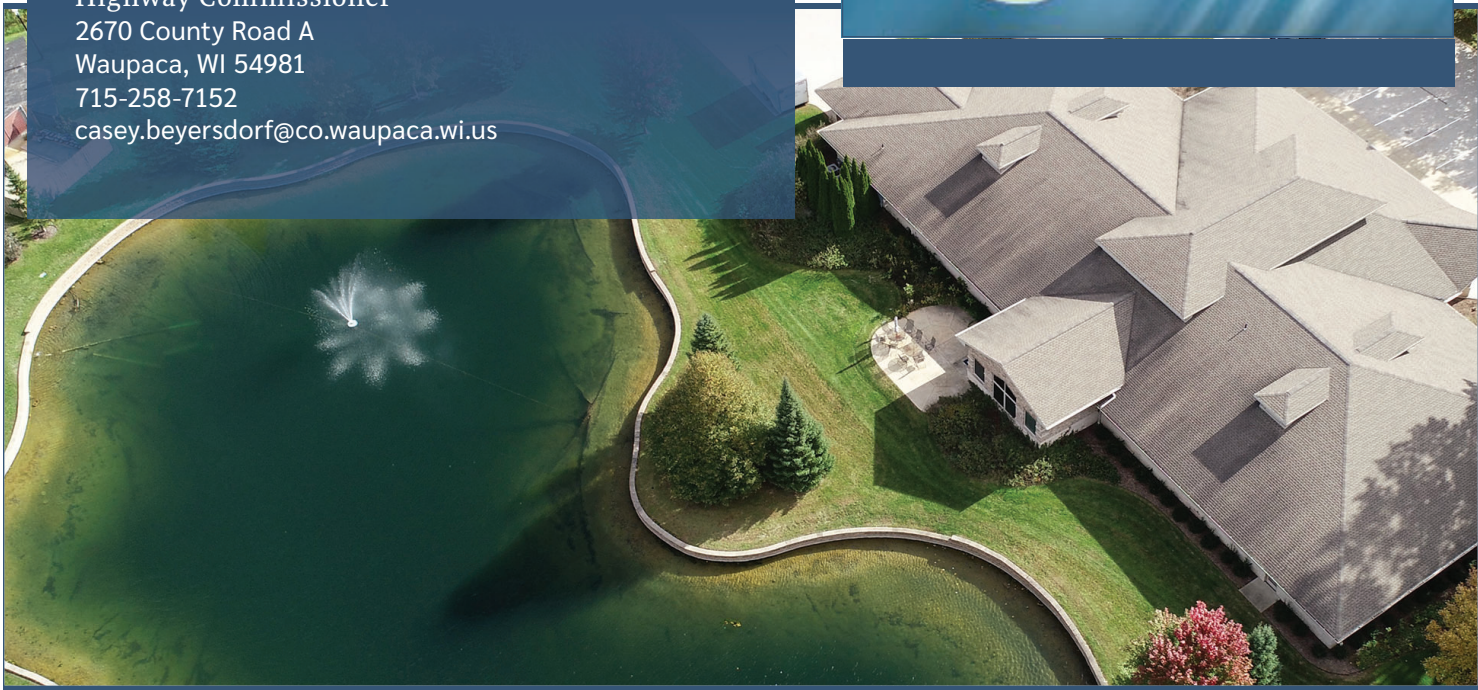
**Village of Hobart**  
*Aaron Kramer*  
Village Administrator  
2990 South Pine Tree Road  
Hobart, WI 54155  
920-869-3804  
aaron@hobart-wi.org

**City of Watertown**  
*Andrew Beyer, P.E.*  
Public Works Director  
106 Jones St  
Watertown, WI 53094  
920-262-4052  
abeyer@watertownwi.gov

**Waupaca County Highway**  
*Casey Beyersdorf*  
Highway Commissioner  
2670 County Road A  
Waupaca, WI 54981  
715-258-7152  
casey.beyersdorf@co.waupaca.wi.us

## Why our clients *continue to choose us...*

Our clients continue to choose Robert E. Lee & Associates because of our unwavering dependability and commitment to being readily available at every stage of the project. We pride ourselves on providing consistent, reliable support, ensuring that no matter the challenge, we are always there to deliver timely solutions and maintain clear communication.



# Thank you

*for this opportunity.*

*Robert E. Lee & Associates thanks the Village of Sister Bay for considering our qualifications and project experience. Our team provides exceptional engineering, environmental, and construction management services, ensuring a seamless and successful partnership. With expertise across multiple disciplines and support from our in-house NES Ecological Services, we are dedicated to delivering high-quality solutions that meet the Village's needs. We look forward to the opportunity to collaborate with you and create a trail that brings lasting value to your community.*

920-662-9641

[info@releeinc.com](mailto:info@releeinc.com)

[releeinc.com](http://releeinc.com)

1250 Centennial Centre Blvd

Hobart, WI 54155





# Village of Sister Bay, Wisconsin

Statement of Qualifications

Highway 57 Trail (Northwoods Drive north to Highway 42) | Construction Management Services





**Stantec Consulting Services Inc.**  
312 North 5th Avenue  
Sturgeon Bay, WI 54235

April 11, 2025

**Attention:**  
Julie Schmelzer  
Village Administrator  
Village of Sister Bay  
julie.schmelzer@sisterbaywi.gov

**Reference:**  
**Statement of Qualifications**  
Highway 57 Trail (Northwoods Drive  
north to Highway 42)  
Construction Management Services  
Project ID: 4610-00-00/70

Dear Julie Schmelzer and the Village of Sister Bay,

As a community that strives to provide safe local connections, multi-use pedestrian paths are an admirable goal for the Village to pursue—and one that Stantec and KL Engineering are perfectly aligned to help deliver. Stantec has previously completed construction plans for this very same Hwy 57 trail and was instrumental in securing the Transportation Alternatives Program (TAP) grant funding that will support its construction. Now, we'd like to help you bring it home!

We are excited to present our qualifications, approach, and cost estimate for providing construction management services for the new construction of the Highway 57 Trail. Stantec has a strong team of municipal and transportation professionals with extensive experience in trail construction projects. KL Engineering brings a wealth of TAP grant funding experience to the equation, providing the knowledge and expertise to help navigate the multi-step DOT process and approvals. As indicated in our proposal to provide design services, we anticipate construction to begin Summer 2027.

For a number of years, Stantec has worked both for and within the Village, all out of our local office in Sturgeon Bay. We have completed developer-led projects within the municipal boundaries of the Village and, more importantly, have worked with the Village to provide real improvements, such as the Parks and Rec Building, Sanitary Sewer Extensions, Wiltse Property Housing Study, and various small projects and daily support answering questions. As I write this cover letter, I am about to make a trip to the Village to look at an ADA ramp issue with your Parks Department head! We are local, we are part of the community, and we are eager to help deliver your projects.

On behalf of the Stantec and KL team, we are excited and thank you for this opportunity to continue working with the Village. On a personal note, I am eagerly awaiting the construction of this trail as my family will be frequent users upon its completion—and I would view it as a point of pride to have had a hand in its creation.

Should you have any questions or need clarification on items presented in this proposal, please do not hesitate to call me directly.

Sincerely,

Stantec Consulting Services Inc.

**Skyler Witalison**  
PE  
Project Manager

Direct: 920-298-1763  
skyler.witalison@stantec.com





Visualization of Hwy 57 Trail | Village of Sister Bay, WI

# Table of Contents

Cover Letter	2
Team	4
Firm Overview	4
Key Staff Credentials, Qualifications, Availability	5
Recently Completed Projects	8

## Firm Overview

**S**tantec empowers clients, people, and communities to rise to the world's greatest challenges at a time when the world faces more unprecedented concerns than ever before.

We are a global leader in sustainable engineering, architecture, and environmental consulting. Our professionals deliver the expertise, technology, and innovation communities need to manage aging infrastructure, demographic and population changes, the energy transition, and more.

Today's communities transcend geographic borders. At Stantec, community means everyone with an interest in the work that we do—from our project teams and industry colleagues to our clients and the people our work impacts. The diverse perspectives of our partners and interested parties drive us to think beyond what's previously been done on critical issues like climate change, digital transformation, and future-proofing our cities and infrastructure.

We are designers, engineers, scientists, project managers, and strategic advisors. We innovate at the intersection of community, creativity, and client relationships to advance communities everywhere, so that together we can redefine what's possible.

### Experience and Capabilities

The Stantec team has performed work for municipal and county government and has extensive experience with federal- and state-funded roadway programs. Our expertise allows us to guide our clients through the process of using roadway funding to prepare studies, plans, and specifications that meet those funding program requirements. Rated as one of the top ten design firms in transportation by Engineering News Record, Stantec has a wealth of experience with similar projects. Whether on a major



📍 East Riverfront Trail | Wausau, Wisconsin

expressway or a city street rehabilitation, we focus on providing solutions that respect the community and local environment. We have the same goals as everyone else—to get where we're going, safely and efficiently.

Working within the context of the communities we serve, we provide planning, detailed engineering and design, construction inspection, construction management, program management, and traffic operations services that fill the needs of our clients and advanced transportation system experiences.

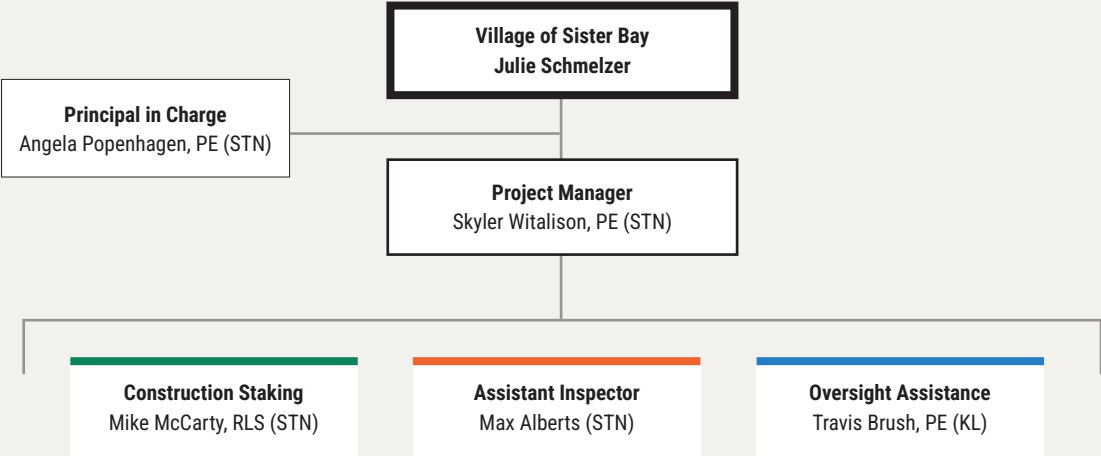
KL Engineering has extensive experience delivering projects using the WisDOT non-traditional process and will provide oversight support. Over the past five years, they have provided construction administration support for the following TAP or CMAQ funded projects:

- City of Greenfield; Powerline Trail Phase 1 and 2
- Jefferson County; Interurban Trail Phase 2 and 3
- Waukesha County; Lake Country Trail Phase 5
- Waukesha County; Pewaukee to Brookfield Trail

**Our team has extensive experience with urban complete street reconstruction projects that emphasize improving the pedestrian realm, accessibility, and safety, while maintaining efficient traffic operations.**



## Key Staff



## Workload capacity and availability

When selecting our proposed project team, we considered several criteria. Project expertise and availability are two important factors that weighed in on our selections. Our team members are committed to meeting your project goals. We monitor team workloads weekly to make sure we're able to fulfill our promises to you. We are confident in our ability to meet the project deadlines. At the beginning of the process, we will discuss resources and overall schedule so our project team can commit to a framework with the right team members and resources for the duration the project. We do not foresee any current projects impacting our proposed work plan and other commitments to the Village of Sister Bay.

**We value our long-term relationship with the Village of Sister Bay and look forward to delivering this latest project for you.**



East Riverfront Trail | Wausau, Wisconsin



## Skyler Witalison

PE

### Project Manager

19 years of experience

BS, Water Resources, University of Wisconsin, Stevens Point, 2004

Wisconsin Professional Engineer #42897

Skyler has extensive experience in civil, municipal, and environmental engineering—focusing on site assessment and planning for site development, site/civil engineering, entitlements (permitting), due diligence, overall project management, and construction management services for clients in all sectors. Skyler's engineering experience includes utility design (public and private), roadway design, stormwater management, construction bid procurement and review, grading and mass balance, and construction cost estimates for budgetary decision-making.

#### Construction Management Experience:

- LRIP-Sponsored Road Redesign, Reconstruction and Construction Inspection | Town of Union, WI
- Town Engineer | Town of Baileys Harbor, WI
- Alabama Street Connection and Municipal Utilities Update | Sturgeon Bay, WI



## Angela Popenhagen

PE, LEED AP BD+C

### Principal in Charge

31 years of experience

BS, Civil Engineering, University of Minnesota, Minneapolis, Minnesota, 1994

Wisconsin Professional Engineer #36512

Angela provides engineering planning, design, and financing guidance on projects and day-to-day issues. She also provides construction administration, including several recent WisDOT projects. She is very familiar with the WisDOT FDM and Standard Specifications for Highway and Structure Construction. Angela's areas of focus include road design, project management, trails and sidewalks, construction management, public involvement, sanitary sewers, storm sewers, erosion and sediment control, trunk utilities, permit applications, comprehensive planning, and cost estimating.

#### Construction Management Experience:

- Safe Routes to School (SRTS) Design and Construction Inspection | Village of Osceola, WI
- US 10 (Dexter Street to US 10 and US 63 intersection), Prescott to Ellsworth | Pierce County, WI
- CTH F, Pierce County Line to Hudson | St. Croix County, WI
- CTH I, CTH A to Somerset | St. Croix County, WI



## Mike McCarty

PLS

### Construction Staking

32 years of experience

BS, Construction Management, University of Wisconsin - Stout, Wisconsin, 1992

Wisconsin Professional Land Surveyor #2298

Mike brings a wealth of experience working in land surveying, focusing on gathering field data, producing maps and plats, and construction staking on projects throughout Wisconsin. He has worked with a wide range of public and private clients to determine their needs and complete projects with efficiency and accuracy.

#### Construction Management Experience:

- Right of Way identification and marking, Ridges Road, Town of Baileys Harbor, WI
- Roadway Existing Condition Survey and ROW Marking, Clark Lake Drive, Town of Jacksonport, WI
- Existing Conditions Survey, ROW Marking, and Construction Staking, Spring Road, Town of Gibraltar, WI

**Max Alberts**

EIT

**Assistant Inspector**

3 years of experience

BS, Civil Engineering, University of Wisconsin,  
Platteville, Wisconsin, 2022

Wisconsin Engineer in Training

Max is a civil engineer who assists in the design of large on-site wastewater systems, utility design (public and private), stormwater management, grading and mass balance, and road design. His projects include campgrounds, subdivisions, rural gas stations, resorts, and storage units.

**Construction Management Experience:**

- WI DOT Rest Area Sanitary Construction Observation and As-Built Survey Documentation | 6 sites spread across Wisconsin
- Sports Complex Sanitary Construction Staking | Village of Sister Bay, WI
- Harbour Village, Existing Site Survey, Construction Staking | Carlsville, WI

**Travis Brush**

PE

**Oversight Assistance**

16 years of experience

BS, Civil Engineering, Michigan Technological  
University, 2009

Wisconsin Professional Engineer #43671

Travis is an experienced construction engineer with a wide variety of projects ranging from local roadway rehabilitation and interstate structure replacement to weigh station reconstruction and new regional trail construction. Travis' secondary background in design leads to practical and efficient field solutions. He has extensive experience in both roadway and trail projects with vocal adjacent property owners, sensitive environments, tight access, structures, and intersection improvements. Within the last five years, he has led or assisted in the construction of seven different trail projects, six of which followed the WisDOT non-traditional process and involved alternative funding.

**Construction Management Experience:**

- CTH C Shared-Use Trail | Kenosha County | WisDOT ID 3736-06-70/71
- CTH E Shared-Use Trail | Kenosha County | WisDOT ID 3766-00-71
- Pewaukee to Brookfield Trail | Waukesha County | WisDOT ID 2718-14-71

## Recently Completed Projects

### Gordon Road/Hwy 57 Reconstruction

📍 Door County, WI

Stantec was selected by the Door County Highway Department to redesign and oversee the construction of the Gordon Road and Highway 57 intersection, north of Sturgeon Bay. This intersection was notoriously dangerous, with a fatality in 2015 due to left-out maneuvers onto the highway. After discussions with WisDOT, the department decided to fund the project independently to find a timely solution.

The redesign included a site survey, allowing only right-out merges, adding an acceleration lane with vertical pole barriers, and reconfiguring the center island. Utility redesigns and vehicle turning maneuvers were also considered. The project required approval by WisDOT prior to construction due to its alteration of a state highway intersection along with verification of right of way limits.

The project successfully reduced accidents from nearly weekly in the summer to just two minor incidents since its completion in 2023.

### LRIP-Sponsored Truway Road Reconstruction

📍 Door County, WI

Stantec was selected to lead the redesign, construction document preparation, and publicly let bidding for a 2.5-mile road reconstruction project in the Town of Union, Door County, Wisconsin. The project, funded by WisDOT Local Roads Improvement Program (LRIP), with the intent to modify the local roadway to handle increased agricultural traffic. The roadway was realigned and widened. The base aggregate was supplemented and, in some areas, replaced due to structural deficiencies. Several culverts were also replaced.

We completed the initial site survey and prepared construction documents, then coordinated the public bidding process and helped the Town select the responsible bidder. Construction oversight followed, along with final inspection and approval for invoice payment. Stantec then applied for LRIP project closeout, including reimbursement—all while attending Town Board meetings to keep the representative apprised of the progress.

### Various Civil Projects Construction Management

📍 Town of Baileys Harbor, WI

As the town engineer for the Town of Baileys Harbor, Stantec supports a variety of civil projects, including sanitary system designs, analysis, construction, and repairs; storm system designs, analysis, construction, and repairs. Work also included environmental permitting and marine dredging. The position is mainly on-call where the municipality identifies the capital projects and relies on Stantec to provide guidance on how to bring the projects to fruition, from initial planning to final construction.





---

Stantec is a global leader in sustainable architecture, engineering, and environmental consulting. The diverse perspectives of our partners and interested parties drive us to think beyond what's previously been done on critical issues like climate change, digital transformation, and future-proofing our cities and infrastructure. We innovate at the intersection of community, creativity, and client relationships to advance communities everywhere, so that together we can redefine what's possible.



Legal Name	Contact Email
Accurate Group, Inc.	aramos@accgi.com
Accurate Group, Inc.	jent@accgi.com
Accurate Group, Inc.	jhomedi@accgi.com
Advanced Engineering Concepts, LLC.	sbohan@aec.engineering
AECOM Technical Services, Inc.	laura.radelia@aecom.com
AECOM Technical Services, Inc.	Michael.Preboske@aecom.com
AECOM Technical Services, Inc.	Randy.Fuchs@aecom.com
Alfred Benesch & Company	azacharias@benesch.com
Alfred Benesch & Company	bbacilek@benesch.com
Alfred Benesch & Company	dgrasser@benesch.com
American Engineering Testing, Inc.	awalters@amengtest.com
American Engineering Testing, Inc.	bmattson@amengtest.com
American Engineering Testing, Inc.	kmarcotte@amengtest.com
APEX Consulting Engineers, LLC	dbrazil@apexconsults.com
APEX Consulting Engineers, LLC	sjohnson@apexconsults.com
Applied Pavement Technology, Inc.	kpotvin@appliedpavement.com
Applied Pavement Technology, Inc.	ksmith@appliedpavement.com
Applied Research Associates, Inc.	jmitchaner@ara.com
AtkinsRealis USA Inc.	christie.kersey@atkinsrealis.com
Ayres Associates Inc	braunp@ayresassociates.com
Ayres Associates Inc	sorensene@ayresassociates.com
Baxter & Woodman, Inc.	dhemmerich@baxterwoodman.com
Baxter & Woodman, Inc.	jambrose@baxterwoodman.com
Becher-Hoppe Associates, Inc.	awallner@becherhoppe.com
Becher-Hoppe Associates, Inc.	bstange@becherhoppe.com
Behnke Materials Engineering, LLC	jjamundson@behnkematerialsengineering.com
Behnke Materials Engineering, LLC	smreichelt@behnkematerialsengineering.com
Berns Infrastructure, LLC	mberns@bernsinfrastructure.com
Bloom Companies, LLC	jbondhus@bloomcos.com
Bloom Companies, LLC	mtharaniyl@bloomcos.com
Bolton & Menk, Inc	anne.gode@bolton-menk.com
Buesing And Associates, Inc.	bebanfield@buesing.com
Buesing And Associates, Inc.	jggantenbein@buesing.com
CBS Squared, Inc.	dmartell@cbssquaredinc.com
CBS Squared, Inc.	stasker@cbssquaredinc.com
CBS Squared, Inc.	ttucker@cbssquaredinc.com
CDM Smith, Inc	bednarskimj@cdmsmith.com

CDM Smith, Inc	MartelCM@cdmsmith.com
CDM Smith, Inc	oneillss@cdmsmith.com
CDM Smith, Inc	sydellojl@cdmsmith.com
Cedar Corporation	bill.betzig@cedarcorp.com
Cedar Corporation	dennis.mack@cedarcorp.com
Cedar Corporation	troy.peterson@cedarcorp.com
CEP Engineering, LLC	najim@cepcompany.com
CGC, Inc.	jgrender@cgcinc.net
CGC, Inc.	jzembroski@cgcinc.net
CGC, Inc.	mschultz@cgcinc.net
CGC, Inc.	mswenson@cgcinc.net
Ciorba Group, Inc	dolaughlin@ciorba.com
Ciorba Group, Inc	sdibernardo@ciorba.com
Civiltech Engineering, Inc.	jewers@civiltechinc.com
Civiltech Engineering, Inc.	jvana@civiltechinc.com
Civiltech Engineering, Inc.	kmishler@civiltechinc.com
Civiltech Engineering, Inc.	mfolkenning@civiltechinc.com
Civiltech Engineering, Inc.	ratchison@civiltechinc.com
Clark Dietz, Inc.	kevin.risch@clarkdietz.com
Clark Dietz, Inc.	lori.krezinski@clarkdietz.com
Coleman Engineering Company	jblondheim@coleman-engineering.com
Coleman Engineering Company	ktrevillian@coleman-engineering.com
Collins Engineers, Inc.	jhamelka@collinsengr.com
Collins Engineers, Inc.	klouder@collinsengr.com
Collins Engineers, Inc.	mmutziger@collinsengr.com
Collins Engineers, Inc.	tmcollins@collinsengr.com
Community Engineering & Building Services LLC	kim@communitytrafficcontrol.com
Community Engineering & Building Services LLC	snkamuiru@gmail.com
Conсор Engineers, LLC	hchampion@consoreng.com
Conсор Engineers, LLC	kmcgaw@consoreng.com
Conсор Engineers, LLC	mdukes@consoreng.com
Cooper Engineering Company, Inc.	ascharf@cooperengineering.net
Cooper Engineering Company, Inc.	jfriberg@cooperengineering.net
Cooper Engineering Company, Inc.	kdraeger@cooperengineering.net
Cooper Engineering Company, Inc.	mglaser@cooperengineering.net
Cooper Engineering Company, Inc.	nmyszka@cooperengineering.net
Cooper Engineering Company, Inc.	sbalsavich@cooperengineering.net
Cooper Engineering Company, Inc.	spoethke@cooperengineering.net
CORRE, Inc.	jrichardson@correinc.com
CORRE, Inc.	tgagner@correinc.com
Cotter Consulting, Inc.	b.vujic@cotterconsulting.com
Cotter Consulting, Inc.	c.snider@cotterconsulting.com

Cotter Consulting, Inc.	w.cotter@cotterconsulting.com
DAAR Engineering, Inc.	abdul@daarcorp.com
DAAR Engineering, Inc.	frank.damato@daarcorp.com
DAAR Engineering, Inc.	mike.damato@daarcorp.com
DAAR Engineering, Inc.	rick.rittenhouse@daarcorp.com
Delta 3 Engineering, Inc.	bart@delta3eng.biz
Delta 3 Engineering, Inc.	dan@delta3eng.biz
DLZ National, Inc.	cfawcett@dlz.com
DLZ National, Inc.	gbrumm@dlz.com
DLZ National, Inc.	jijones@dlz.com
DLZ National, Inc.	jzwierzynski@dlz.com
EMCS, Inc.	amueller@emcsinc.com
EMCS, Inc.	bwilson@emcsinc.com
EMCS, Inc.	cevans@emcsinc.com
EMCS, Inc.	cinman@emcsinc.com
EMCS, Inc.	dbrose@emcsinc.com
EMCS, Inc.	rmorgan@emcsinc.com
EMCS, Inc.	schristensen@emcsinc.com
EXP U.S. Services Inc.	amy.frankowski@exp.com
EXP U.S. Services Inc.	bari.singer@exp.com
EXP U.S. Services Inc.	brian.umbright@exp.com
EXP U.S. Services Inc.	kathleen.weise@exp.com
EXP U.S. Services Inc.	rowland.hoslet@exp.com
EXP U.S. Services Inc.	timothy.neumann@exp.com
Fehr-Graham & Associates, LLC	dthompson@fehrgraham.com
Fehr-Graham & Associates, LLC	jduff@fehrgraham.com
Fehr-Graham & Associates, LLC	kplowman@fehrgraham.com
Fickett Structural Solutions, Inc.	aallen@fickettinc.com
Fickett Structural Solutions, Inc.	accounting@fickettinc.com
Fickett Structural Solutions, Inc.	afickett@fickettinc.com
Fickett Structural Solutions, Inc.	brian.kaplan@yaharacpas.com
Fickett Structural Solutions, Inc.	bschmidt@fickettinc.com
Fickett Structural Solutions, Inc.	tdemski@fickettinc.com
Foth Infrastructure & Environment, LLC	chris.saxby@foth.com
Foth Infrastructure & Environment, LLC	joseph.gregas@foth.com
Foth Infrastructure & Environment, LLC	tom.ludwig@foth.com
Gandhi & Associates, Inc.	dgandhi@pkgdandhi.com
Gandhi & Associates, Inc.	mrecinto@pkgandhi.com
Gannett Fleming, Inc.	jhammaker@gfnet.com
Gannett Fleming, Inc.	jrikk@gfnet.com
Gannett Fleming, Inc.	jsodemann@gfnet.com
Gannett Fleming, Inc.	kmullins@gfnet.com



Gestra Engineering, Inc.	katherine.greene@gestrainc.com
Gestra Engineering, Inc.	masud.alam@gestrainc.com
Graef-USA Inc.	andre.ost@graef-usa.com
Graef-USA Inc.	andrew.schultz@graef-usa.com
Graef-USA Inc.	Burt.Naumann@graef-usa.com
Graef-USA Inc.	justyce.dixon@graef-usa.com
Graef-USA Inc.	MaryBeth.Pettit@graef-usa.com
Greenman-Pedersen Inc.	bhough@gpinet.com
Greenman-Pedersen Inc.	eotte@gpinet.com
Gremmer & Associates, Inc.	b.oitzinger@gremmerassociates.com
Gremmer & Associates, Inc.	d.kaetterhenry@gremmerassociates.com
Hanson Professional Services, Inc.	jnelson@hanson-inc.com
Hanson Professional Services, Inc.	sswango@hanson-inc.com
Hardesty & Hanover, LLC	anna@hardestyhanover.com
Hardesty & Hanover, LLC	azweibel@hardestyhanover.com
Hardesty & Hanover, LLC	mdelemont@hardestyhanover.com
HDR Engineering, Inc.	chase.kieler@hdrinc.com
HDR Engineering, Inc.	christine.wiegert@hdrinc.com
HDR Engineering, Inc.	jeff.rhoda@hdrinc.com
HDR Engineering, Inc.	julia.busch@hdrinc.com
HDR Engineering, Inc.	katherine.biesmann@hdrinc.com
HDR Engineering, Inc.	keith.quernemoen@hdrinc.com
HDR Engineering, Inc.	scott.burfeind@hdrinc.com
Hey And Associates, Inc.	volo@heyassoc.com
Himalayan Consultants, LLC	gad hikary@himalayanllc.com
Himalayan Consultants, LLC	sadhikary@himalayanllc.com
HNTB Corporation	AKowske@hntb.com
HNTB Corporation	KWittbrot@HNTB.com
Horrocks LLC	compliance@horrocks.com
Horrocks LLC	william.anderson@horrocks.com
HRV Conformance Verification Associates, Inc.	kchatary@hrvinc.com
HRV Conformance Verification Associates, Inc.	lprotch@hrvinc.com
HRV Conformance Verification Associates, Inc.	restachel@hrvinc.com
HRV Conformance Verification Associates, Inc.	rmcguire@hrvinc.com
Hutchison Engineering, Inc.	jhutchison@hutchisoneng.com
I & S Group, Inc.	heath.hagner@isginc.com
I & S Group, Inc.	heidi.schwarz@isginc.com
I & S Group, Inc.	joel.goodenough@isginc.com
I & S Group, Inc.	will.kratt@isginc.com
IMEG Consultants Corp.	brianna.k.beason@imegcorp.com
IMEG Consultants Corp.	corey.j.stout@imegcorp.com
IMEG Consultants Corp.	eric.c.moe@imegcorp.com

IMEG Consultants Corp.	procurement@imegcorp.com
Iteris, Inc	cachillides@iteris.com
Jacobs Engineering Group, Inc.	bill.stoeck@jacobs.com
Jacobs Engineering Group, Inc.	jeff.bauer@jacobs.com
Jacobs Engineering Group, Inc.	kerry.meyer@jacobs.com
Jewell Associates Engineers, Inc.	ellery.schaffer@jewellassoc.com
Jewell Associates Engineers, Inc.	jeff.smith@jewellassoc.com
Jewell Associates Engineers, Inc.	jenny.labatt@jewellassoc.com
Jewell Associates Engineers, Inc.	mike.bakalars@jewellassoc.com
Jewell Associates Engineers, Inc.	robert.hanold@jewellassoc.com
Jewell Associates Engineers, Inc.	scott.whitsett@jewellassoc.com
JNI Engineering, LLC	justin@jniengineering.com
JSD Professional Services, Inc.	andy.wilkowski@jsdinc.com
JSD Professional Services, Inc.	craig.riley@jsdinc.com
JSD Professional Services, Inc.	jan.schroeder@jsdinc.com
JSD Professional Services, Inc.	todd.buhr@jsdinc.com
JT Engineering, Inc.	bradg@jt-engineering.com
JT Engineering, Inc.	brianc@jt-engineering.com
JT Engineering, Inc.	dougs@jt-engineering.com
JT Engineering, Inc.	jedm@jt-engineering.com
JT Engineering, Inc.	michelles@jt-engineering.com
JT Engineering, Inc.	renees@jt-engineering.com
K. Singh & Associates, Inc.	angy.singh@ksinghengineering.com
K. Singh & Associates, Inc.	ksingh@ksinghengineering.com
K. Singh & Associates, Inc.	psingh@ksinghengineering.com
Kapur & Associates, Inc.	prasad@kapurinc.com
Kimley-Horn And Associates, Inc.	aaron.stolte@kimley-horn.com
Kimley-Horn And Associates, Inc.	lisa.lukachek@kimley-horn.com
Kimley-Horn And Associates, Inc.	michael.ruelle@kimley-horn.com
KL Engineering, Inc.	matt.schroeder@klengineering.com
KL Engineering, Inc.	ryan.schanhofer@klengineering.com
KPFF, Inc.	karen.lee@kpff.com
KPFF, Inc.	setheny.how@kpff.com
Krech, Ojard & Associates, Inc.	scott.stempihar@krechojard.com
Krech, Ojard & Associates, Inc.	scott.stevens@krechojard.com
KTA-TATOR, Inc.	dmcfayden@kta.com
KTA-TATOR, Inc.	jhilton@kta.com
KTA-TATOR, Inc.	pcorbett@kta.com
Kunkel Engineering Group, LLC	dneitzel@kunkelengineering.com
Kunkel Engineering Group, LLC	thampton@kunkelengineering.com
Lakeside Engineers, LLC	doug.dembowski@lakesideengineers.com
Lakeside Engineers, LLC	kelly.langer@lakesideengineers.com

Lakeside Engineers, LLC	tammy.szohr@lakesideengineers.com
LT Leon Associates, Inc.	jthompson@tleon.com
LT Leon Associates, Inc.	lleon@tleon.com
Lynch & Associates Engineering Consultants, LLC	dmeier@lynch-engineering.com
Lynch & Associates Engineering Consultants, LLC	jlynch@lynch-engineering.com
Lynch & Associates Engineering Consultants, LLC	tlynch@lynch-engineering.com
M Squared Engineering, LLC	cgerritson@msquaredengineering.com
M Squared Engineering, LLC	matt@msquaredengineering.com
M Squared Engineering, LLC	minal@msquaredengineering.com
Martenson & Eisele, Inc.	maryjom@martenson-eisele.com
McMahon Associates, Inc.	mgreely@mcmgrp.com
McMahon Associates, Inc.	msimon@mcmgrp.com
Mead & Hunt, Inc.	andy.platz@meadhunt.com
Mead & Hunt, Inc.	john.rathke@meadhunt.com
Michael Baker International, Inc.	Jeffrey.Polenske@mbakerintl.com
Michael Baker International, Inc.	Joseph.Catalano@mbakerintl.com
Mortenson Infrastructure, Inc.	justin.kutka@mortenson.com
Mortenson Infrastructure, Inc.	rob.myers@mortenson.com
Mortenson Infrastructure, Inc.	tim.jones@mortenson.com
MSA Professional Services, Inc.	ajustman@msa-ps.com
MSA Professional Services, Inc.	bhuibregtse@msa-ps.com
MSA Professional Services, Inc.	bwilkinson@msa-ps.com
MSA Professional Services, Inc.	jmaxwell@msa-ps.com
MSA Professional Services, Inc.	kruhland@msa-ps.com
MSA Professional Services, Inc.	lrhodes@msa-ps.com
MSA Professional Services, Inc.	mstatz@msa-ps.com
MSA Professional Services, Inc.	qklink@msa-ps.com
MSA Professional Services, Inc.	sspromberg@msa-ps.com
MTJ Engineering, LLC	info@mtjengineering.com
Nielsen Madsen & Barber, S.C.	cmoriarity@nmbsc.net
Nielsen Madsen & Barber, S.C.	kwilliams@nmbsc.net
Nielsen Madsen & Barber, S.C.	mmadsen@nmbsc.net
Northern Wisconsin-Based Engineers, Inc.	heather@cheqnet.net
Northern Wisconsin-Based Engineers, Inc.	jstellrecht@nwbeinc.om
Northern Wisconsin-Based Engineers, Inc.	rolson@nwbeinc.com
Oneida Engineering Solutions, LLC	cshaw@oescgroup.com
Oneida Engineering Solutions, LLC	ldreifuerst@oescgroup.com
Origin Design Co.	brenda.ritt@origindesign.com
Origin Design Co.	codi.putnam@origindesign.com
Origin Design Co.	julie.neebel@origindesign.com
Paragon Associates, Inc.	jeffm@paragon-assoc.biz
Parsons Transportation Group Inc.	amar.rajpurkar@parsons.com

Parsons Transportation Group Inc.	anthony.pakeltis@parsons.com
Patrick Engineering, Inc.	cmorey@patrickco.com
Patrick Engineering, Inc.	slabarbera@patrickco.com
Point of Beginning, Inc.	katelyns@pobinc.com
Professional Engineering Services, Ltd.	elia.ayaz@peservicesmn.com
Professional Engineering Services, Ltd.	jennifer.hildebrand@peservicesmn.com
Professional Engineering Services, Ltd.	ross.jentink@peservicesmn.com
Quandel Consultants, Inc.	cquandel@quandel.com
Quandel Consultants, Inc.	dsimon@quandel.com
Quandel Consultants, Inc.	koelerich@quandel.com
QUEST Civil Engineers, LLC	kimberly.kronstedt@questllc.biz
Quigg Engineering, Inc	bkoonce@quiggengineering.com
Quigg Engineering, Inc	sjohnson@quiggengineering.com
R&G Engineering, LLC	lcampuzano@rgengineering.net
R&G Engineering, LLC	rrivera@rgengineering.net
R.A. Smith, Inc.	doug.senso@rasmith.com
R.A. Smith, Inc.	john.elkin@rasmith.com
R.A. Smith, Inc.	karen.wiesneski@rasmith.com
R.A. Smith, Inc.	pat.hawley@rasmith.com
R.H. Batterman & Company, Inc.	lwagner@rhbatterman.com
R.H. Batterman & Company, Inc.	tneedham@rhbatterman.com
REI Engineering, Inc.	ejohnson@REIengineering.com
REI Engineering, Inc.	jeny@reiengineering.com
REI Engineering, Inc.	klassa@reiengineering.com
RJS Engineering, LLC	bsmits@rjs-engineering.com
Robert E. Lee & Associates, Inc.	anelson@releeinc.com
Robert E. Lee & Associates, Inc.	mlarson@releeinc.com
Robert E. Lee & Associates, Inc.	rtrzinski@releeinc.com
Rummel, Klepper & Kahl, LLP	marketing@rkk.com
Short Elliott Hendrickson Inc.	chedrington@sehinc.com
Short Elliott Hendrickson Inc.	jtomesh@sehinc.com
Short Elliott Hendrickson Inc.	jwoller@sehinc.com
Short Elliott Hendrickson Inc.	tkrista@sehinc.com
Singh & Associates, Inc.	hkaur@singhinc.com
Singh & Associates, Inc.	sbeale@singhinc.com
Singh & Associates, Inc.	wconcannon@singhinc.com
SmithGroup, Inc.	annalise.vislocky@smithgroup.com
Snyder & Associates, Inc.	accounting@snyder-associates.com
Snyder & Associates, Inc.	mcalkins@snyder-associates.com
Soils & Engineering Services, Inc.	duane@soils.ws
Soils & Engineering Services, Inc.	julie@soils.ws
Spann & Associates, LLC	bspann@spannllc.com



SRF Consulting Group, Inc.	jknudson@srfconsulting.com
SRF Consulting Group, Inc.	pmartens@srfconsulting.com
Stantec Consulting Services, Inc.	angela.popenhagen@stantec.com
Stantec Consulting Services, Inc.	bill.poole@stantec.com
Stantec Consulting Services, Inc.	marla.weiss@stantec.com
Strand Associates, Inc.	ashley.pridemore@strand.com
Strand Associates, Inc.	bhupendra.bista@strand.com
Strand Associates, Inc.	john.mariani@strand.com
Strand Associates, Inc.	ken.swanson@strand.com
Strand Associates, Inc.	luke.holman@strand.com
Strand Associates, Inc.	Transportation@strand.com
STV Incorporated	angela.haigler@stvinc.com
STV Incorporated	ChicagoMarketing@stvinc.com
STV Incorporated	edward.coffey@stvinc.com
STV Incorporated	jerry.stump@stvinc.com
TEAM Engineering, Inc.	jbrandt@teamenginc.com
TERRA Engineering, Ltd.	chutchinson@terraengineering.com
TERRA Engineering, Ltd.	dkavanaugh@terraengineering.com
TERRA Engineering, Ltd.	gghareeb@terraengineering.com
TERRA Engineering, Ltd.	jbousaab@terraengineering.com
Terracon Consultants	blaine.schroyer@terracon.com
Terracon Consultants	paul.koszarek@terracon.com
Terracon Consultants	vicki.zak@terracon.com
TerraTec Engineering, LLC	ljohnson@terrateceng.com
The SWECE Group LLC	Angie.Larson@SWECE.org
The SWECE Group LLC	David.Larson@SWECE.org
Toltz, King, Duvall, Anderson & Associates, Incorporated	carolyn.johnson@tkda.com
Toltz, King, Duvall, Anderson & Associates, Incorporated	chad.gunderson@tkda.com
Toltz, King, Duvall, Anderson & Associates, Incorporated	james.bellefeuille@tkda.com
Toltz, King, Duvall, Anderson & Associates, Incorporated	john.ahern@tkda.com
Toltz, King, Duvall, Anderson & Associates, Incorporated	marketing.accounts@tkda.com
Toltz, King, Duvall, Anderson & Associates, Incorporated	matt.christensen@tkda.com
Toole Design Group, LLC	marketing@tooledesign.com
Town & Country Engineering, Inc.	brian@tcengineers.net
Town & Country Engineering, Inc.	sjulich@tcengineers.net
Traffic Analysis & Design, Inc.	jbieberitz@tadi-us.com
Traffic Analysis & Design, Inc.	solsson@tadi-us.com
TranSmart Technologies, LLC	cli@transmartinc.com
TranSystems Corporation	hlwannemaker@transystems.com

TranSystems Corporation	tsbright@transystems.com
TRC Environmental, Corp.	dhaak@trccompanies.com
Vierbicher Associates, Inc.	gbla@vierbicher.com
Vierbicher Associates, Inc.	rzub@vierbicher.com
Westbrook Associated Engineers, Inc	apalmer@westbrookeng.com
Westbrook Associated Engineers, Inc	mdischler@westbrookeng.com
Westwood Professional Services, Inc.	barry.morgan@westwoodps.com
Westwood Professional Services, Inc.	camie.ferrier@westwoodps.com
Westwood Professional Services, Inc.	mike.malcolm@westwoodps.com
Westwood Professional Services, Inc.	ryan.betker@westwoodps.com
Westwood Professional Services, Inc.	steve.seymour@westwoodps.com
Wi-Skies, LLC	deborah@wi-skies.com
Wi-Skies, LLC	joe@wi-skies.com
WSP USA Environment & Infrastructure, Inc.	christopher.prosperi@woodplc.com
WSP USA Environment & Infrastructure, Inc.	gary.baker@woodplc.com
WSP USA INC.	catherine.woods@wsp.com
WSP USA INC.	christopher.kidd@wsp.com
WSP USA INC.	laura.unger@wsp.com
WSP USA INC.	mark.klipstein@wsp.com
WSP USA INC.	ryan.mckane@wsp.com