



# West Brandywine Township's "To do" Packet

Part 2 of 3



This project was made possible by a generous grant from the William Penn Foundation. Additional funding was provided by Chester County and the Pennsylvania Department of Conservation and Natural Resources.

# BCG Partnership – The Enablers

## Funders

- This project was made possible by a generous grant from the William Penn Foundation
- Pennsylvania Department of Conservation and Natural Resources
- Chester County Planning Commission
- The Chichester duPont Foundation
- The Marmot Foundation
- The George and Miriam Martin Foundation supported greenway-related projects in Pennsbury, Birmingham and Chadds Ford Townships.

## Planning team

- Brandywine Conservancy
- Chester County Planning Commission
- Delaware County Planning Department

## Greenway Liaisons by Municipality

- |                             |   |
|-----------------------------|---|
| • Birmingham Township       | John Conklin  |
| • Caln Township             | Greg Prowant  |
| • Chadds Ford Township      | Deborah Reardon<br>Kathleen Goodier                         |
| • City of Coatesville       | Stephen Cane  |
| • Downingtown Borough       | Millie Byerly   |
| • East Bradford Township    | Mandie Cantlin<br>Maria Kenny<br>Mike Colley<br>Nancy Danks |
| • East Brandywine Township  | Michael Wagoner<br>Sandy Moser                              |
| • East Caln Township        | Barb Kelly  |
| • East Fallowfield Township | Vince Lyons   |
| • Honey Brook Borough       | Mark Lucas  |
| • Honey Brook Township      | Toni Antonini   |

- Modena Borough Ted Reed
- Newlin Township Bob Shippee
- Pennsbury Township Kathy Howley  
Michael Lane
- Pocopson Township Mike McGann  
Ricki Stumpo
- South Coatesville Borough Renee Carey
- Uwchlan Township Tara Caputo
- Upper Uwchlan Township Joe Stoyack  
Kevin Kerr  
Sally Winterton
- Valley Township Karen Chandler
- Wallace Township Tish Molloy
- West Bradford Township Terry Gallagher  
Tommy Ryan
- West Brandywine Township Bob Schini  
John Cassels
- West Caln Township Gary Dunlap
- West Nantmeal Township Susan Ward

### Agency representatives

- DCNR Cindy Dunlap  
Jeff Knowles  
Drew Gilchrist
- Chester County Jake Michael  
Carol Stauffer  
Karen Marshall

- Brandywine Conservancy

Sheila Fleming  
Wes Horner  
Meredith Mayer  
Tony Robalik  
John Snook  
John Theilacker

DRAFT

# Introduction



The Strategic Action Plan for the Brandywine Creek Greenway consists of three distinct and separate documents:

1. Part 1 of 3 (Strategies) provides organizational strategies and broad natural and cultural resource conservation strategies that are relevant to all twenty-four greenway municipalities.
2. Part 2 of 3 (Municipal “To Do” Packets) consists of 24 chapters with each containing information unique to a single greenway municipality. The focus of this document is on clearly-defined recreation, transportation, and green corridor initiatives.
3. Part 3 of 3 (Took Kit) provides a suite of conservation tools and resource maps that are intended to provide guidance for greenway municipalities according to their unique circumstances and priorities.

This “To Do” Packet (Part 2 of 3) is unique to your municipality. The focus of this document is on recreation and alternative transportation priorities and conservation corridors (along creeks and streams) that were identified as important resources in your municipality during one of four regional workshops. The maps and project portfolios included in this document are the first step in project development and they illustrate how smaller municipal projects are a critical part of a much larger planned regional network of open space, recreation, and transportation alternatives. All of the documents in this packet are intended as supporting/background information to be included with grant proposals.

### Greenway Functions Checklist

The greenway functions checklist was completed by a representative of your municipality during a public workshop. The checklist identifies those greenway functions that are perceived as the most important functions of the greenway in your municipality. A greenway can mean different things to each municipality, and the purpose of the checklist is to remind municipalities of how they view the greenway as it functions in their municipality.

### Concept Map

The first version of this map was published in the Concept Plan for the Brandywine Creek Greenway in June, 2012, and was later modified in the April, 2013 Addendum to the Concept Plan to add eight west branch municipalities into the study area. The Concept Map was created by those who represented their municipalities in a series of four regional workshops. The current map incorporates corrections and minor modifications requested during meetings with individual municipalities after the Addendum was finalized. The map is a reminder of the broader vision for the greenway, and is used as the basis for the much more detailed Recreation and Alternative Transportation Priorities map, described below.

### Recreation and Alternative Transportation Priorities Map

This map closely resembles the land links (planned trails) illustrated on the Concept Map but with greater accuracy. The data for the map was assembled from information shown on 24 municipal Project Portfolio maps (minus green corridors or conservation corridors). The trails as shown are **conceptual only**. Further study will be necessary to determine the exact location and alignment of each trail. The map provides some context for municipalities as they begin to identify neighbors and potential partners for building new trails and enhancing existing bike routes.

### Project Portfolio Map and Project Descriptions

Each shown on the Recreation map is identified and illustrated in further detail on the Project Portfolio map that was created for your municipality. Trail and alternative transportation projects are further described in separate project description sheets that highlight the project name, key partners, project focus and location, accomplishments to date, and next steps. In all planned trail projects, the recommended next step is to prepare a feasibility study that would explore existing and alternative routes. Refer to the Tool Kit (Part 3 of 3) for information on sources of funding for trails and alternative transportation projects.

### Regional Trail Priorities Map

Other key partners in the greenway may also take the lead on regional trail or bicycle route projects that will involve your municipality. Those key partners include Chester County, Delaware County, PA DCNR, and the Brandywine Conservancy. Those regional trail priorities are identified and illustrated on the Regional Trail Priorities map, and descriptions of projects relevant to your municipality are included.

### Natural Resource Protection Ordinance Review

The final section of the Packet provides a review by the Chester County Planning Commission of your municipality's current resource protection standards as contained in your municipal ordinances. The Brandywine Conservancy provided a review of Chadds Ford Township ordinances (Delaware County). The review covers provisions for steep slopes, woodlands, wetlands, riparian buffers, and floodplains. Depending upon the current level of resource protection, the review also provides recommendations for updating your municipality's resource protection standards.

DRAFT

# Brandywine Creek Greenway Functions Checklist

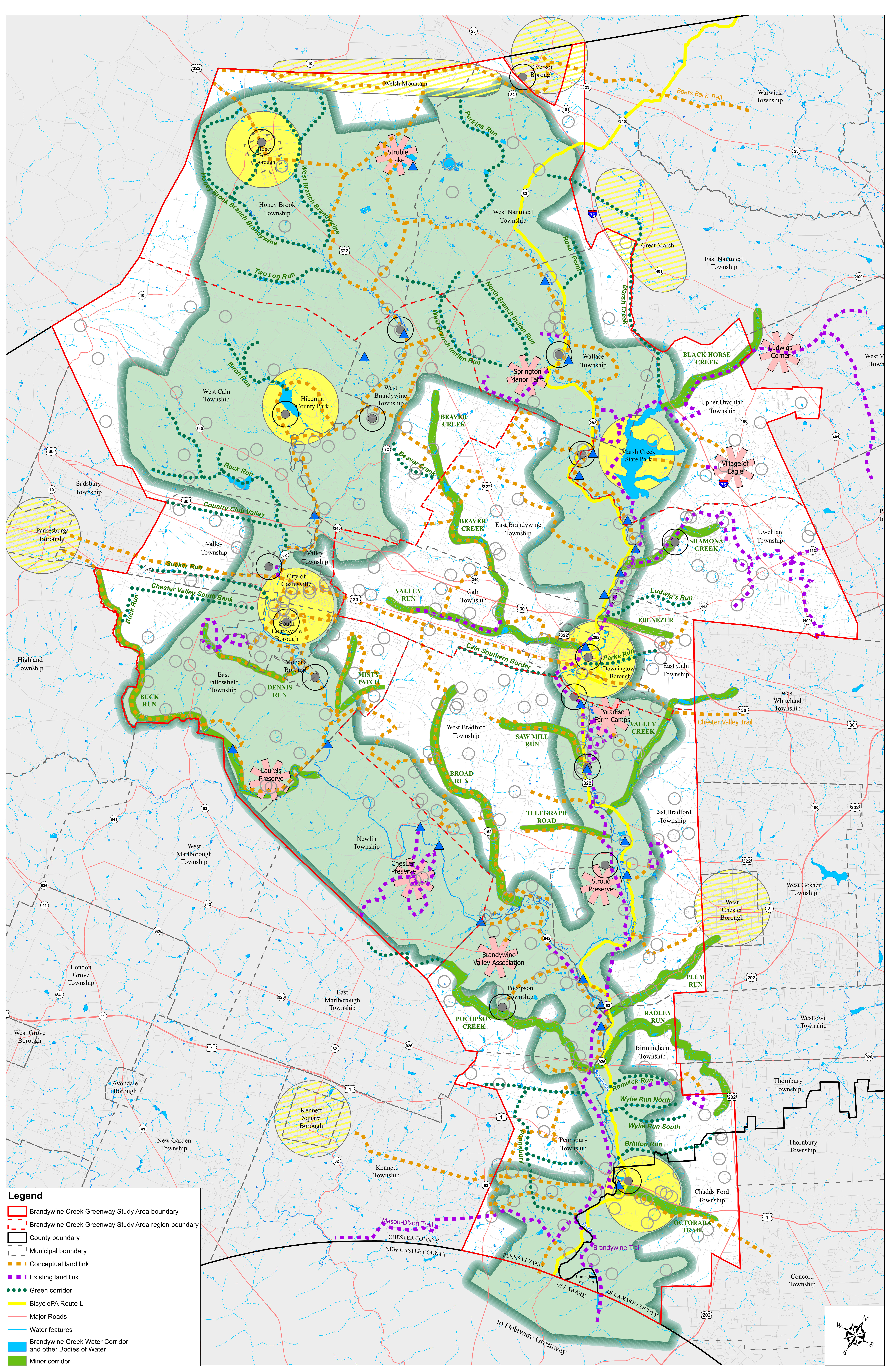
For: \_\_\_\_\_ West Brandywine Township

Greenway Theme Maps	Possible Greenway Functions	Check <input checked="" type="checkbox"/> Top 6
Natural Features	Preserve vital <b>plant and animal</b> habitat corridors such as riparian buffers, wetlands, and woodlands	✓
	Enhance <b>water quality</b> in the Brandywine and its tributaries	✓
	Improve <b>air quality</b> in developed areas	
	Control and/or mitigate <b>flooding</b> in flood-prone areas	
Open Space and Rec.	Manage <b>economic</b> opportunities to boost local economy	
	Promote <b>recreation</b> and public use of municipal-, county-, and state-owned open space	✓
	Foster outdoor <b>education</b> and school access to open space	✓
	Provide <b>transportation</b> alternatives for walking, bicycle, and equestrian	✓
Cultural Features	<b>Buffer</b> the Brandywine valley from new development	
	Preserve productive <b>agricultural</b> lands	
	Protect state- and municipally-designated <b>scenic</b> resources	
	Preserve nationally and municipally-designated <b>historic</b> structures and districts	✓

Note:

- Top six functions to be prioritized by each participating municipality

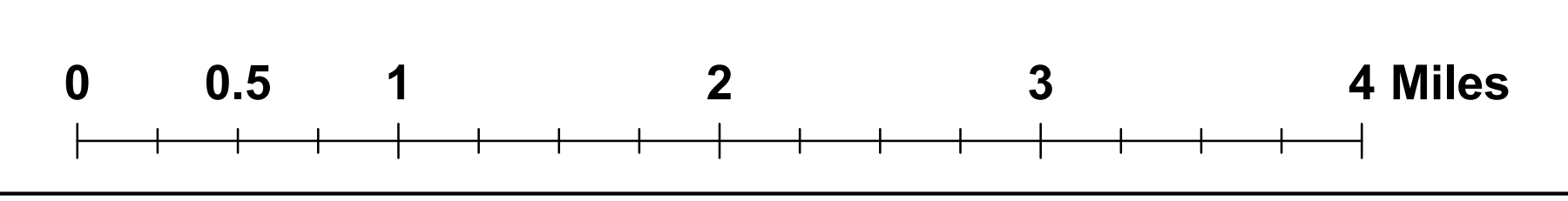




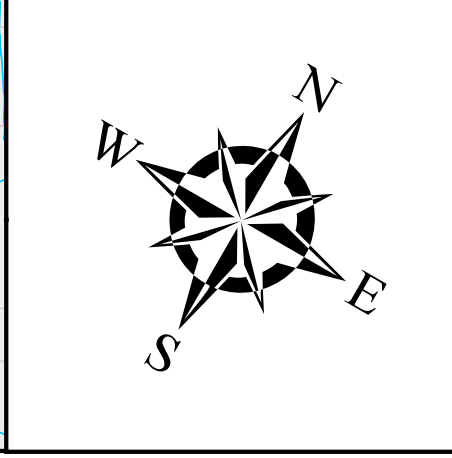
- Legend**
- Brandywine Creek Greenway Study Area boundary
  - Brandywine Creek Greenway Study Area region boundary
  - County boundary
  - Municipal boundary
  - Conceptual land link
  - Existing land link
  - Green corridor
  - BicyclePA Route L
  - Major Roads
  - Water features
  - Brandywine Creek Water Corridor and other Bodies of Water
  - Minor corridor
  - Hub
  - Satellite Hub
  - Major Corridor
  - Gateway
  - Node
  - ▲ Creek Access
  - ✱ Destination Point

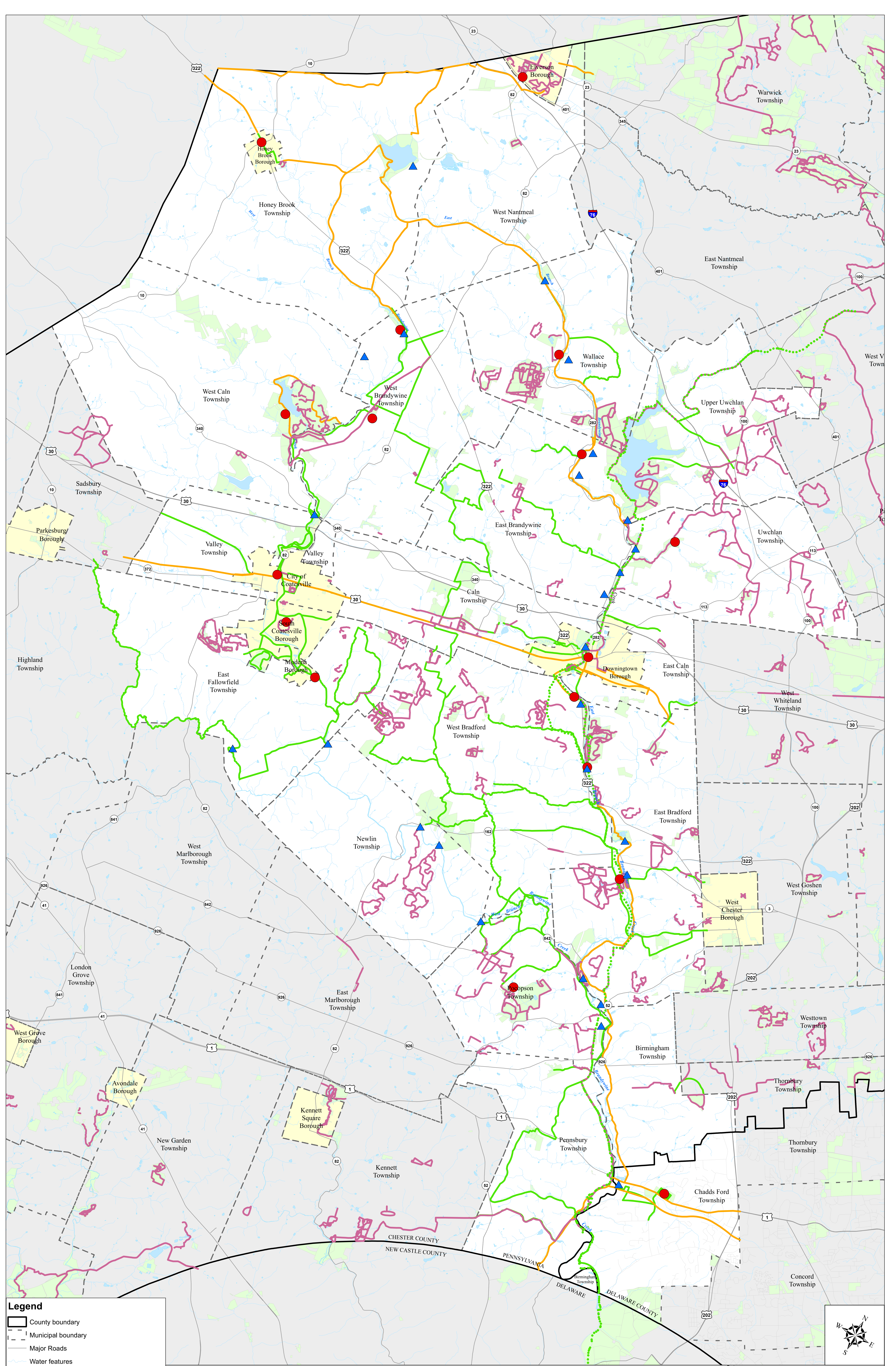
# Concept Map

## Brandywine Creek Greenway



Data sources:  
 Roads, Railroads, Streams,  
 Municipal boundaries  
 Chester County GIS Department, 2010.  
 Delaware County GIS Department, 2010.



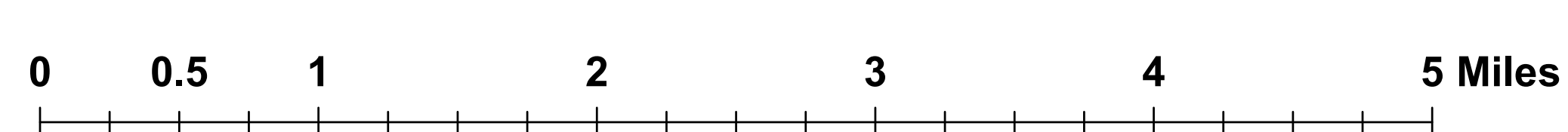


**Legend**

- County boundary
- Municipal boundary
- Major Roads
- Water features
- Brandywine Creek Water Corridor and other Bodies of Water
- Regional Trails under study
- Connecting Trails under study
- Brandywine Trail
- Existing Trail
- Public lands(Federal, state, county, municipal)
- Gateway
- ▲ Public Creek Access locations

**\*DRAFT\* Recreation and Alternative Transportation Priorities**

*Brandywine Creek Greenway*

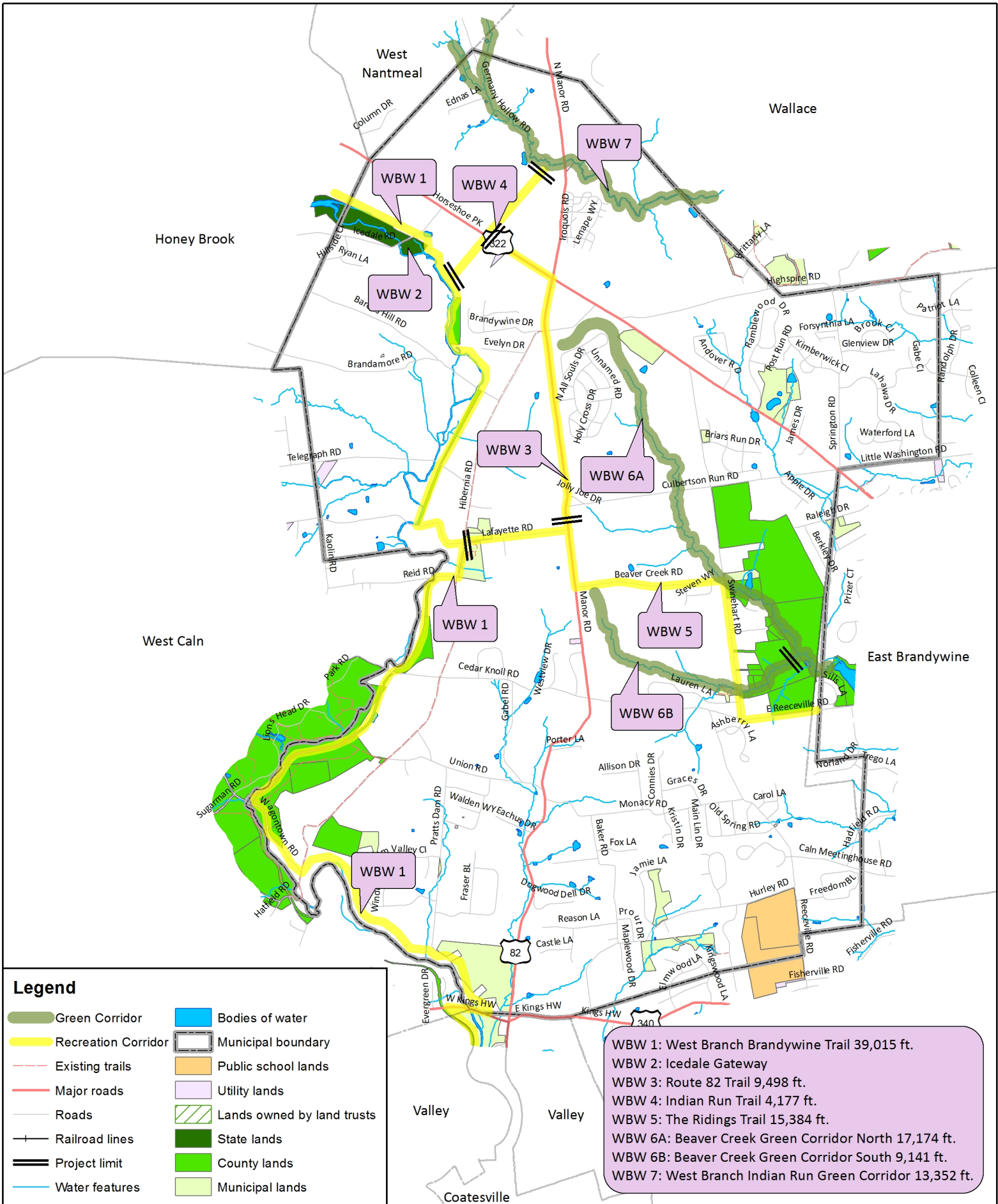


**Data sources:**  
 Roads, Streams, Municipal boundaries  
 Chester County GIS Department, 2012.  
 Delaware County GIS Department, 2012.  
 Chester County Planning Commission, 2013.  
 Delaware County GIS Department, 2011.

**BRANDYWINE CREEK Greenway**

**BRANDYWINE CONSERVANCY**

Map created: March 21, 2014



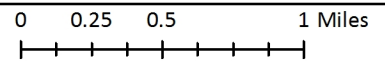
**Legend**

Green Corridor	Bodies of water
Recreation Corridor	Municipal boundary
Existing trails	Public school lands
Major roads	Utility lands
Roads	Lands owned by land trusts
Railroad lines	State lands
Project limit	County lands
Water features	Municipal lands

WBW 1: West Branch Brandywine Trail 39,015 ft.  
 WBW 2: Icedale Gateway  
 WBW 3: Route 82 Trail 9,498 ft.  
 WBW 4: Indian Run Trail 4,177 ft.  
 WBW 5: The Ridings Trail 15,384 ft.  
 WBW 6A: Beaver Creek Green Corridor North 17,174 ft.  
 WBW 6B: Beaver Creek Green Corridor South 9,141 ft.  
 WBW 7: West Branch Indian Run Green Corridor 13,352 ft.



**West Brandywine Township**  
*Project Portfolio*



Data sources: Roads, Railroads, Streams, Utility lands, Municipal boundaries, Public school lands, State lands, County lands, Municipal lands, Lands owned by land trusts - Chester County GIS Department, 2011, 2013 - Map created: July 15, 2013



## West Brandywine Township

### Project WBW 1

#### Project Name

West Branch Brandywine Trail

#### Key Partners

Chester County, Hibernia County Park, DCNR, private landowners

#### Project Focus and Location

To study the feasibility of a multi-use trail along the West Branch of the Brandywine.

- Explore opportunities for a stone dust trail that would connect to Valley Township/Coatesville trails to the south and to Honey Brook Township trails to the north
- Portions abandoned rail line as a potential route
- Portions rural share the road trail
- Trail easements with private landowners, voluntary
- For pedestrians, cyclists, and equestrians
- Short term need

#### Accomplishments to Date

- Portions owned by Chester County
- Portions used informally by residents
- Shown on Map 8-1 in the municipal Comprehensive Plan

#### Next Steps

- Pursue partners and funding for a feasibility study
- 5 years for trail feasibility study, design, and implementation



## West Brandywine Township

### Project WBW 2

#### Project Name

Icedale Gateway

#### Key Partners

Chester County, PA DCNR, PA DEP,

#### Project Focus and Location

To provide site improvements for visitors and boaters at the Icedale Gateway.

- Trailhead kiosk
- Expanded public parking area
- Interpretive signage
- Orientation maps
- Bicycle parking
- Picnic facilities
- Seating
- Enhanced creek access for boating or fishing
- Dam removal
- Short term need

#### Accomplishments to Date

- Gravel parking area already in place
- Bridge condemned and road closed, suitable for trail and/or parking

#### Next Steps

- Begin landowner outreach regarding conservation easements
- Pursue partners and funding
- 5 years for trail feasibility study, design, and implementation
- 10 years to achieve permanent protection



## West Brandywine Township

### Project WBW 3

#### Project Name

Route 82 Trail

#### Key Partners

Archdiocese of Philadelphia, developers, PennDOT, Chester County, PECO, landowners, businesses

#### Project Focus and Location

To design and construct a multi-use trail along Route 82 from Route 322 to Lafayette Road.

- Project to be initiated by West Brandywine Township and implemented by the Archdiocese of Philadelphia Cemetery
- Grass trail/footpath
- Signage, fencing, landscaping, crosswalks
- Short term need

#### Accomplishments to Date

- Land development plans and approval includes a trail easement along Route 82
- The Archdiocese has agreed to underwrite and implement the trail along its property frontage

#### Next Steps

- Research land development plans and agreements
- Municipal officials to meet with Archdiocese representatives
- Meet with other partners to discuss gaps and connections
- 1 year to implement Archdiocese trails
- 5 years for trail feasibility study, design, and implementation of trail gaps



## West Brandywine Township

### Project WBW 4

#### Project Name

Indian Run Trail

#### Key Partners

PECO, PennDOT, Chester County, DCNR, landowners, businesses

#### Project Focus and Location

To design and implement a trail along the PECO corridor from the West Branch Brandywine Trail to Indian Run Village.

- Natural surface
- Mowed trail for walkers and mountain bikes
- Route 322 crossing
- Fencing
- Landscaping
- Signage
- Long term need once the West Branch Brandywine Trail is implemented

#### Accomplishments to Date

- Portions of land on south side of Route 322 owned by the municipality
- PECO corridor is owned by PECO

#### Next Steps

- Begin discussions with PECO representatives
- Transportation study for a trail crossing at Route 322
- Pursue partners and funding
- 3 years for trail study, design, and implementation



## West Brandywine Township

### Project WBW 5

#### Project Name

The Ridings Trail

#### Key Partners

Chester County, DCNR, PennDOT, PECO, Archdiocese of Philadelphia, Applecross Country Club

#### Project Focus and Location

To provide an east-west trail connection to link the West Branch Brandywine Trail with open space at Applecross Country Club.

- Off road trail or sidewalks
- Portions share the road
- Portions follow Lafayette Road, Route 82, Beaver Creek Road, Swinehart Road and Reeceville Road.
- Connection to Guthriesville Village in East Brandywine Township
- Signage
- Long term need once the West Branch Brandywine Trail is implemented

#### Accomplishments to Date

Connections recommended in the comprehensive plan Map 8-1.

#### Next Steps

- Begin dialogue with East Brandywine Township re. inter-municipal trail
- Pursue partners and funding
- Prepare a feasibility study
- 5 years for trail feasibility study, design, and implementation





## West Brandywine Township

### Project WBW 6A

#### Project Name

Beaver Creek Green Corridor North

#### Key Partners

Chester County, DCNR, land trusts, landowners, businesses

#### Project Focus and Location

To conserve and enhance natural resources along Beaver Creek from Sills Lane to PA Route 322.

- Restoration of degraded areas
- Habitat enhancement
- BMPs for water quality
- Signage
- Footpath connection to trails in Applecross Country Club
- Long term need

#### Accomplishments to Date

Connections recommended in the comprehensive plan Map 8-1.

#### Next Steps

- Begin landowner outreach
- Cultivate trail easements
- Pursue partners and funding
- Ongoing conservation opportunities



## West Brandywine Township

### Project WBW 6B

#### Project Name

Beaver Creek Green Corridor South

#### Key Partners

Chester County, DCNR, land trusts, landowners, businesses

#### Project Focus and Location

To conserve and enhance natural resources along Beaver Creek from Beaver Creek Road to Swinehart Road.

- Restoration of degraded areas
- Habitat enhancement
- BMPs for water quality
- Signage
- Footpath connection to trails in Applecross Country Club
- Long term need

#### Accomplishments to Date

Connections recommended in the comprehensive plan Map 8-1.

#### Next Steps

- Begin landowner outreach
- Cultivate trail easements
- Pursue partners and funding
- Ongoing conservation opportunities



## West Brandywine Township

### Project WBW 7

#### Project Name

West Branch Indian Run Green Corridor

#### Key Partners

DCNR, DEP, Chester County, landowners, PECO, West Nantmeal Township, Wallace Township, Brandywine Conservancy, land trusts, watershed associations

#### Project Focus and Location

To conserve and enhance the natural resources along West Branch Indian Run

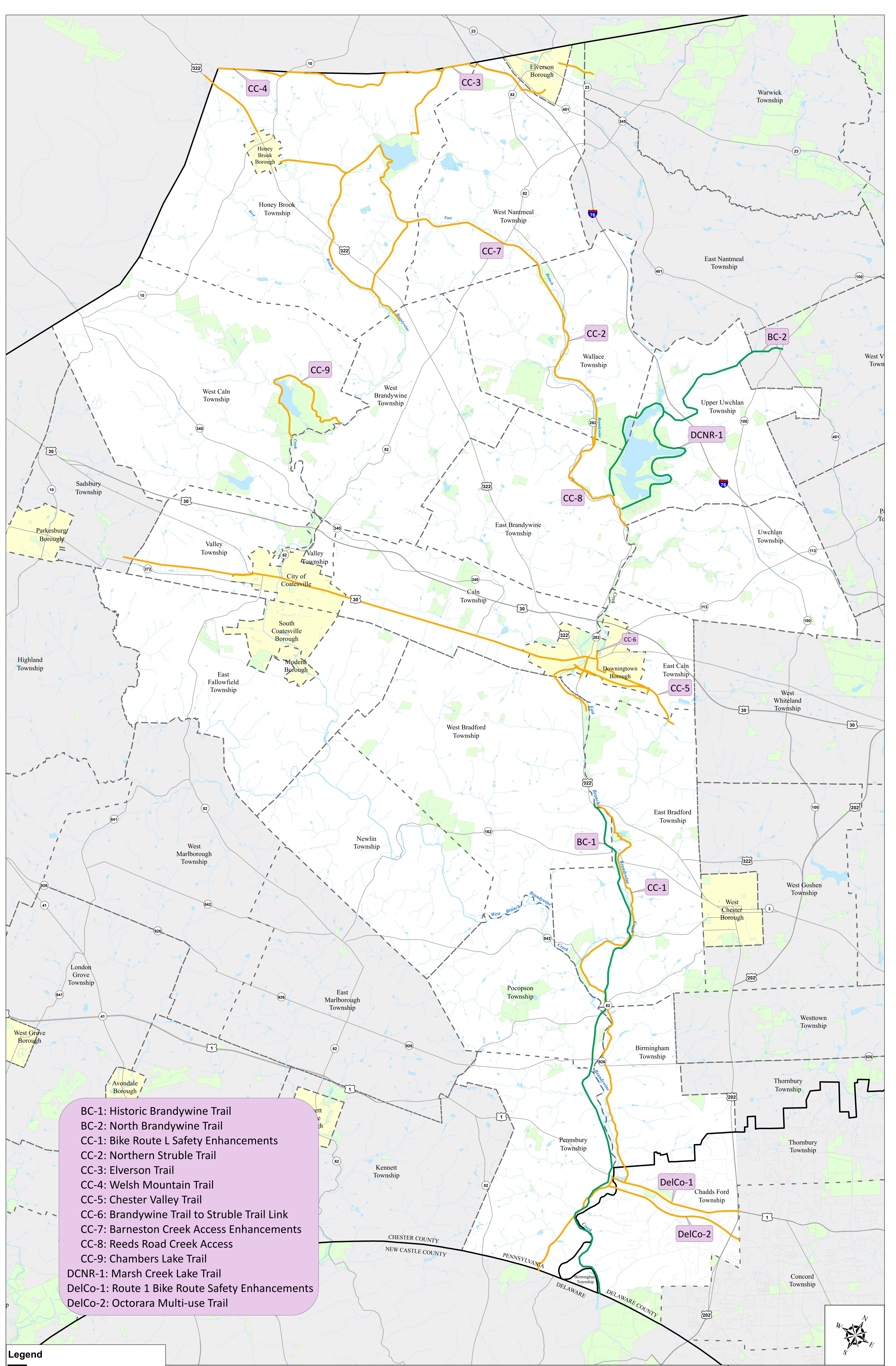
- Conservation easements with private landowners, voluntary
- Restoration of degraded areas
- Habitat enhancement
- Restore woodland cover and increase woodland interior habitat
- Restoration of riparian buffers
- BMPs for water quality
- Stream bank stabilization
- Short term need

#### Accomplishments to Date

Informal discussion among Modena Borough Council members

#### Next Steps

- Identify high priorities for reforestation of riparian buffers
- Begin landowner outreach regarding conservation easements
- Pursue partnerships and funding
- Ongoing



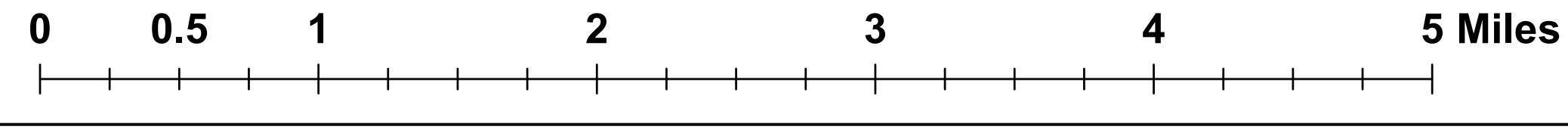
- BC-1: Historic Brandywine Trail
- BC-2: North Brandywine Trail
- CC-1: Bike Route L Safety Enhancements
- CC-2: Northern Struble Trail
- CC-3: Elverson Trail
- CC-4: Welsh Mountain Trail
- CC-5: Chester Valley Trail
- CC-6: Brandywine Trail to Struble Trail Link
- CC-7: Barneston Creek Access Enhancements
- CC-8: Reeds Road Creek Access
- CC-9: Chambers Lake Trail
- DCNR-1: Marsh Creek Lake Trail
- DelCo-1: Route 1 Bike Route Safety Enhancements
- DelCo-2: Octorara Multi-use Trail

**Legend**

- County boundary
- Municipal boundary
- Major Roads
- Water features
- Brandywine Creek Water Corridor and other Bodies of Water
- Regional Trails under study
- Connecting Trails under study
- Public lands(Federal, state, county, municipal)

**\*DRAFT\* Counties and Other Agencies  
Project Portfolio**

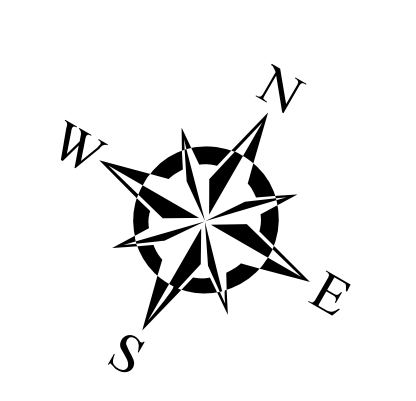
**Brandywine Creek Greenway**



**Data sources:**  
 Roads, Streams, Municipal boundaries  
 Protected lands

Chester County GIS Department, 2012.  
 Delaware County GIS Department, 2012.  
 Chester County Planning Commission, 2013.  
 Delaware County GIS Department, 2011.

Map created: March 21, 2014



## Project List and Priorities

The following table of Projects and Priorities lists all projects described in the 24 Municipal “To Do” Packets. Each municipal project is identified with a project code that reflects the name of the municipality that acts as the primary on the project.

<b>Project Code</b>	<b>Municipality/Agency</b>
BC	Brandywine Conservancy
BSC	Borough of South Coatesville
BT	Birmingham Township
CC	Chester County
CFT	Chadds Ford Township
CT	Caln Township
CofC	City of Coatesville
DB	Downingtown Borough
DCNR	PA Department of Conservation and Natural Resources
DelCo	Delaware County
EbrT	East Bradford Township
EBwT	East Brandywine Township
ECT	East Caln Township
EFT	East Fallowfield Township
HBB	Honey Brook Borough
HBT	Honey Brook Township
MB	Modena Borough
NT	Newlin Township
PENN	Pennsbury Township
PT	Pocopson Township
UUT	Upper Uwchlan Township
UW	Uwchlan Township
VT	Valley Township
WBF	West Bradford Township
WBW	West Brandywine Township
WC	West Caln
WNT	West Nantmeal Township
WT	Wallace Township

The projects are arranged alphabetically according to their project code number. They are also categorized as short-term (1-5 years), intermediate (5-10 years), long-term ( 10+ years), and ongoing. Ongoing projects require continual effort or are undertaken on an as-needed basis. Refer to your municipal “To Do” packet for more detailed information about your municipality’s specific projects, key partners, project focus and location, accomplishments to date, and recommended next steps.

Projects	Short-term	Inter-mediate	Long-term	Ongoing
BC 1 Historic Brandywine Trail	X			
BC 2 North Brandywine Trail			X	
BSC 1 Overhill Road Trail			X	
BSC 2 Mill Trail Section 2	X			
BSC 3 Mill Trail Section 3	X			
BSC 4 Mill Trail Section 4	X			
BSC 5 Mill Trail Section 5		X		
BSC 6 Mill Trail Section 6		X		
BSC 7 Mill Trail Section 7		X		
BSC 8 Birch Street to Upper Gap Road			X	
BSC 9 Upper Gap Road Recreation Center			X	
BSC 10 Dennis Run Conservation				X
BSC 11 Upper Gap Trail			X	
BT 1 Sandy Hollow to Birmingham Hill Trail	X			
BT 2 Brinton Run Green Corridor				X
BT 3 Wylie Run Green Corridor				X
BT 4 Renwick Run Green Corridor				X
BT 5 Radley run Green Corridor				X
CC 1 Bike Route L Safety Enhancements	X			
CC 2 Northern Struble Trail	X			
CC 3 Elverson Trail			X	
CC 4 Welsh Mountain Trail			X	
CC 5 Chester Valley Trail			X	
CC 6 Brandywine Trail to Struble Trail Link	X			
CC 7 Barneston Creek Access Enhancements	X			
CC 8 Reeds Road Creek Access			X	
CC 9 Chambers Lake Trail			X	
CFT 1 Chadds Ford Gateway Enhancements	X			
CFT 2 Walkable Chadds Ford		X		
CFT 3 Village Park		X		
CFT 4 Harvey Run Green Corridor				X
CT 1 Lincoln Highway Business District Enhancements	X			
CT 2 Valley Run Minor Corridor	X			
CT 3 Lloyd Park to Downingtown Trail Connector		X		
CT 4 GO Carlson Trail Connections	X			
CT 5 North Bailey Road Trail			X	
CT 6 Valley Run Municipal Park Enhancements	X			
CT 7 South Bailey Road Trail			X	
CT 8 Beaver Creek Minor Corridor				X
CofC 1 Downtown Revitalization	X			
CofC 2 Gateway Park Improvements		X		
CofC 3 West Branch Brandywine Trail		X		
CofC 4 South First Avenue Improvements	X			
DB 1 Parke Run Conservation Initiative				X

Projects	Short-term	Inter-mediate	Long-term	Ongoing
DB 2 Beaver Creek Corridor	X			
DB 3 Kerr Park Enhancements	X			
DB 4 Downingtown Gateway Enhancements	X			
DB 5 Pennsylvania Avenue Bike Route	X			
DCNR 1 Marsh Creek Lake Trail			X	
DelCo 1 Route 1 Bike Safety Enhancements	X			
DelCo 2 Octorara Multi-use Trail			X	
EBrT 1 County Seat Corridor Trail			X	
EBrT 2 Taylor Run Trail			X	
EBrT 3 Ingrams Mill to Stroud Connector	X			
EBrT4 Shaws Bridge park Improvements	X			
EBrT 5 Plum Run Corridor Enhancements				X
EBrT 6 Stroud Preserve Gateway		X		
EBrT 7 Gibsons Bridge Gateway		X		
EBrT 8 Ingrams Mill Park Enhancements	X			
EBrT 9 Paradise Farm Camps Improvements			X	
EBrT 10 Historic Brandywine Trail	X			
EBrT 11 Valley Creek Corridor Enhancements				X
EBrT 12 M John Johnson Nature Center to Ingrams Mill	X			
EBrT 13 Sugars Bridge Master Plan			X	
EBwT 1 Lyndell Gateway-fee interest			X	
EBwT 2 Lyndell Gateway- site design and development			X	
EBwT 3 Wissahickon Spring Water Co. Access	X			
EBwT 4 Dowlin Forge Road Creek Access	X			
EBwT 5 Shady Oaks Campground Fee Interest	X			
EBwT 6 Shady Oaks Campground Creek Access	X			
EBwT 7 Shady Oaks Bridge			X	
EBwT 8 Beaver Creek Green Corridor	X			X
EBwT 9 Dowlin Forge Road Trail	X			
EBwT 10 Whittaker Memorial Park Bridge			X	
EBwT 11 Culbertson Run Trail			X	
EBwT 12 Beaver Creek Headwaters Trail			X	
ECT 1 East Branch Brandywine Stewardship Plan	X			X
ECT 2 Valley Creek Corridor Trail			X	
ECT 3 Ebenezer Corridor Trail	X			
ECT 4 Ludwig's Run Green Corridor				X
EFT 1 Dennis Run Green Corridor			X	
EFT 2 Misty Patch Loop Trail	X			
EFT 3 Lauria Brothers- Public Access	X			
EFT 4 Mortonville Creek Access Enhancements	X			
EFT 5 Buck Run Trail			X	
EFT 6 Hayes-Clark Bridge Creek Access Enhancements	X			
EFT 7 Buck Run Conservation	X			
EFT 8 Sucker Run Woodland Conservation	X			

<b>Projects</b>	<b>Short-term</b>	<b>Inter-mediate</b>	<b>Long-term</b>	<b>Ongoing</b>
EFT 9 West Branch Brandywine Trail			X	
HBB 1 Headwaters Green Corridor	X			
HBB 2 Umble Park Connector	X			
HBB 3 Downtown and Streetscape Revitalization	X			
HBB 4 Borough Park Improvements			X	
HBT 1 Welsh Mountains Conservation Initiative	X			
HBT 2 Two Log Run Green Corridor	X			
HBT 3 Honey Brook Branch Green Corridor	X			
HBT 4 West Branch Headwaters Green Corridor	X			
HBT 5 West Branch Brandywine Trail	X			
HBT 6 Indian Run Green Corridor				X
MB 1 Lauria Brothers Public Access	X			
MB 2 Lauria Brothers Gateway Improvements			X	
MB 3 Dennis Run Conservation				X
MB 4 Mortonville Road Trail			X	
NT 1 Brandywine Drive Creek Access	X			
NT 2 Pocopson Creek Greenway Corridor				X
Penn 1 Mason Dixon Trail	X			
Penn 2 Share the Road Trails			X	
Penn 3 Johnson Woods to Brandywine Trail	X			
Penn 4 Bennetts Run Green Corridor			X	
Penn 5 Ring Run Green Corridor			X	
Penn 6 Fairville Road Green Corridor			X	
PT 1 Pocopson Park Gateway	X			
PT 2 Pocopson Park Gateway to West Creek Road Trail	X			
PT 3 BVA to West Creek Road Trail			X	
PT 4 Northbrook Trail			X	
PT 5 West Creek Road Trail	X			
PT 6 Lenape Forge Road and Canoe Launch	X			
PT 7 Pocopson Creek Green Corridor			X	
UUT 1 Eagle Trailhead	X			
UUT 2 Park Road Multi-Use Trail	X			
UUT 3 Little Conestoga Trail			X	
UUT 4 Dorlans Mill Creek Access	X			
UUT 5 Blackhorse Creek Minor Corridor				
UUT 6 Marsh Creek Green Corridor	X			
UUT 7 Eagle Village Enhancements			X	
UUT 8 Lyndell Road Pull-off				
UW 1 Ludwig's Run Green Corridor				X
UW 2 Shamona Creek Minor Corridor				X
VT 1 Business Route 30 Corridor Enhancements			X	
VT 2 West Branch Brandywine Trail	X			
VT 3 Country Club Green Corridor	X			
VT 4 Sucker Run Green Corridor	X			



<b>Projects</b>	<b>Short-term</b>	<b>Inter-mediate</b>	<b>Long-term</b>	<b>Ongoing</b>
VT 5 Rock Run Green Corridor	X			X
WBF 1 East Branch Brandywine Trail	X			
WBF 2 Telegraph Road Minor Corridor			X	
WBF 3 Orchard Loop Trail			X	
WBF 4 Sawmill Run Corridor			X	
WBF 5 Broad Run Minor Corridor	X			
WBF 6 Sycamore Loop Trail			X	
WBF 7 Tattersall/Embreeville Loop Trail			X	
WBF 8 Romansville/Lone Eagle/ Stock Grange Loop Trail			X	
WBF 9 Broad Run to Northbrook Link			X	
WBF 10 Brandywine Meadows Gateway	X			
WBF 11 Camp Linden Trail			X	
WBW 1 West Branch Brandywine Trail	X			
WBW 2 Icedale Gateway	X			
WBW 3 Route 82 Trail	X			
WBW 4 Indian Run Trail			X	
WBW 5 The Ridings Trail			X	
WBW 6A Beaver Creek Green Corridor North			X	
WBW 6B Beaver Creek Green Corridor South			X	
WBW 7 West Branch Indian Creek Run Green Corridor	X			
WC 1 Rock Run Green Corridor	X			X
WC 2 Birch Run Green Corridor	X			X
WNT 1 Perkins Run Green Corridor			X	X
WNT 2 Indian Run Green Corridors			X	X
WNT 3 Marsh Creek Green Corridor			X	X
WT 1 Valhalla Loop Trail			X	
WT 2 Burgess Park Water Access			X	
WT 3 Glenmoore Gateway Enhancements	X			
WT 4 North Branch Indian Run Corridor	X			
WT 5 West Branch Indian Run Corridor	X			
WT 6 Rose Pointe Green Corridor	X			
WT 7 Marsh Creek Green Corridor				



## West Brandywine Township

Date Reviewed: 8/14/13

Zoning Adopted: 8/15/07 Zoning Last Amended: 1/3/11	SLDO Adopted: 10/00 SLDO Last Amended: 10/15/09
<b>Resource and Protection Standards</b>	
<b>1. Steep Slopes (15-25%, 25%+): Rigorously Protected</b>	
<ul style="list-style-type: none"> <li>• ZO 200-72: Establishes a “Steep Slope Conservation District” consisting of “Moderate Slope Districts” at 15 to 25%, and “Severe Slope Districts” at 25%+. For moderate slopes limits land uses to preserves, forestry, agriculture, yards and residential development, with specific exceptions. For severe slopes, limits land uses to residential yards, and up to 25% of common open space in a cluster design.</li> </ul>	
<b>2. Woodlands Protection: Rigorously Protected</b>	
<ul style="list-style-type: none"> <li>• SLDO 167-65: Requires woodland disturbance be minimized. Forbids removal of up to 8-in. DBH tree masses, unless “clearly necessary.” Establishes a formula for when woodland replacement is required.</li> </ul>	
<b>3. Wetlands: Rigorously Protected</b>	
<ul style="list-style-type: none"> <li>• ZO 1-20: Defines Riparian Buffer as including areas within wetlands, areas extending out 25 feet from wetlands in headwaters, and areas extending out 15 feet, from all other wetlands.</li> <li>• SLDO 167-64: For Riparian Buffers, allows no disturbance, except for forestry, vegetation management, agriculture and activities with a state permit, with specific exceptions.</li> </ul>	
<b>4. Riparian Buffers: Rigorously Protected</b>	
<ul style="list-style-type: none"> <li>• ZO 1-20: Defines Riparian Buffer as extending out 100 feet from all headwaters waterways, and 75 ft, out from all other waterways; and areas within wetlands, areas extending out 25 feet from wetlands in headwaters, and areas extending out 15 feet, from all other wetlands.</li> <li>• SLDO 167-64: For Riparian Buffers, allows no disturbance, except for forestry, vegetation management, agriculture and activities with a state permit, with specific exceptions.</li> </ul>	
<b>5. Floodplain: Somewhat Protected</b>	
<ul style="list-style-type: none"> <li>• ZO 200-54: Defines “Flood Plain District” as areas that experience 100-year flood, Floodway Areas, Flood Fringe Areas, and “General Flood Plain Areas.”</li> <li>• ZO 200-61: Limits use in “Flood Plain District” to agriculture, recreation, common open space, yards, outdoor events, public facilities and other uses, with specific exceptions.</li> </ul>	



### Recommended Improvements to Resource Protection Standards

- **Floodplains:** Include regulations that prohibit both land disturbance and the construction of new structures within a floodplain (which includes both the floodway and the flood fringe.)