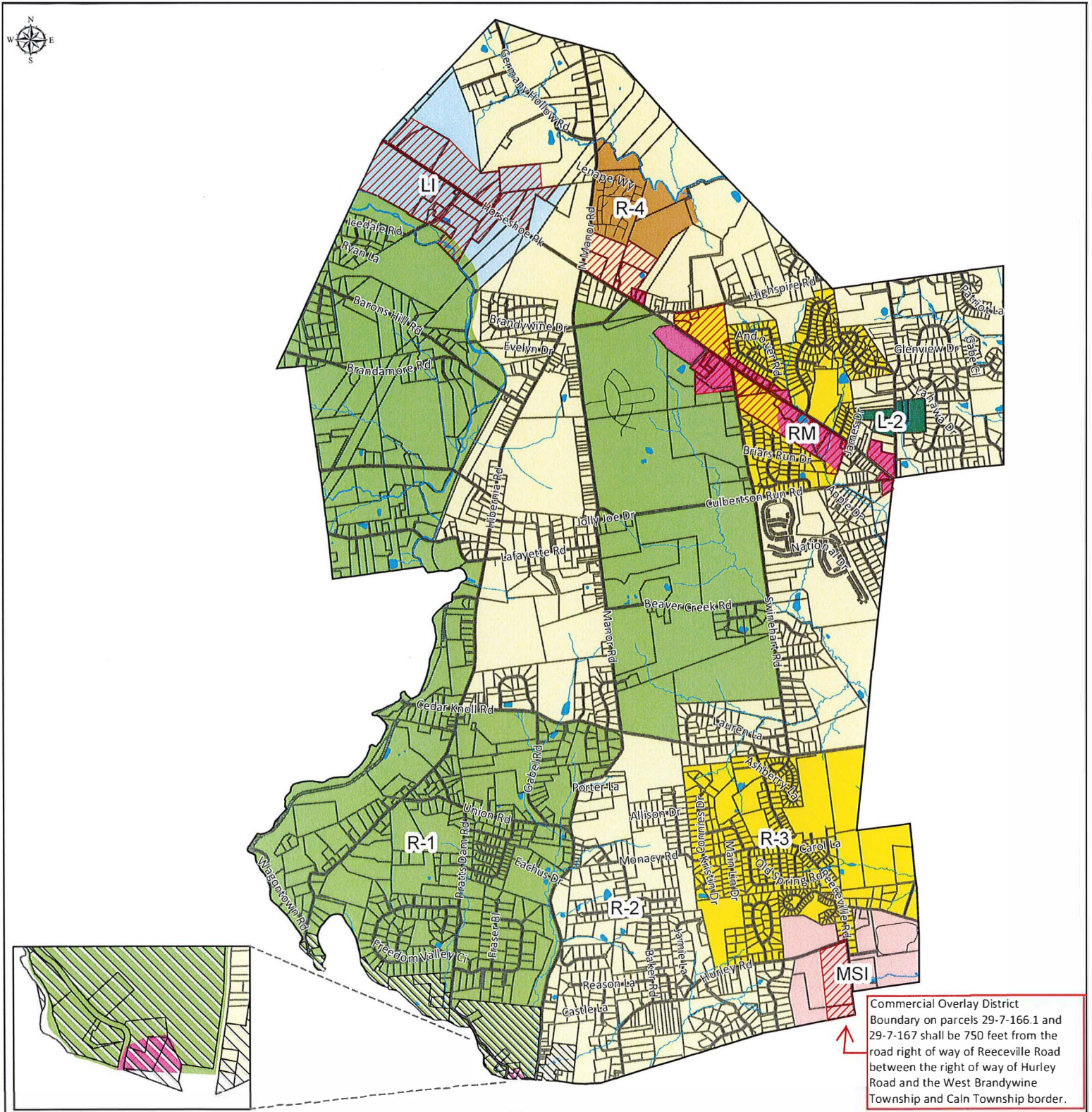


COMMERCIAL OVERLAY - Parcel size West

Brandywine Township, Chester County



Base Data: Base data from Chester County Geographic Information Services, 2022

Disclaimer: This map is for planning purposes only and does not constitute a valid survey.

Map created: March 25, 2022
Last revised: August 1, 2023



- | | | | |
|--|-------------------------------------|--|---------------------------|
| | General Commercial Overlay | | R-2 - Rural Residential |
| | Airport District Overlay | | R-3 - Residential |
| | LI - Limited Industrial | | R-4 - Residential |
| | L-2 - Limited Industrial | | RM - Rural Mixed Use |
| | MSI - Medical/Service Institutional | | Tax parcels (2022) |
| | R-1 - Agricultural / Residential | | Lakes, rivers and streams |

0 1 Miles