



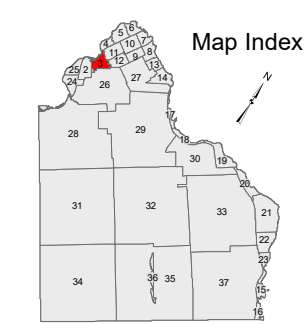
Map prepared by LatLong Logic, LLC for the City of Calais (January 2018).

Aerial Layer Credits: Source: Esri, DigitalGlobe, GeoEye, Earthstar Geographics, CNES/Airbus DS, USDA, USGS, AeroGRID, IGN, and the GIS User Community



**CITY OF CALAIS**  
Washington County

SCALE: 1 in = 200 ft  
0 100 200 400

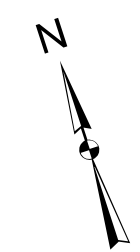


**LEGEND**

- Zoning boundary (Shoreland zoning not shown)
- Parcel boundary
- Zoning designation
- Easement/Right-of-Way
- Historic lot line
- Parcel hook
- Shoreland setback (250 feet)
- Sunrise Snowmobilers Trail

2-1 Parcel Number  
150 Survey Dimension (Feet)  
The information on this map is for assessment purposes only, is not a legal survey, and is not intended to be used for conveyance.

Additional copies can be obtained from:  
Calais Assessor's Office  
11 Church Street  
Calais, Maine 04619  
(207) 454-2521



PROPERTY MAPS  
**Map Sheet**  
3