

CITY OF CALAIS

Zoning and Shoreland Zoning Map




The Calais City Clerk _____
 attests that this is the official Shoreland Map
 for the City of Calais, Maine.
 Effective Date: _____

LEGEND



 Inland Waterfowl/Wading bird habitat wetlands

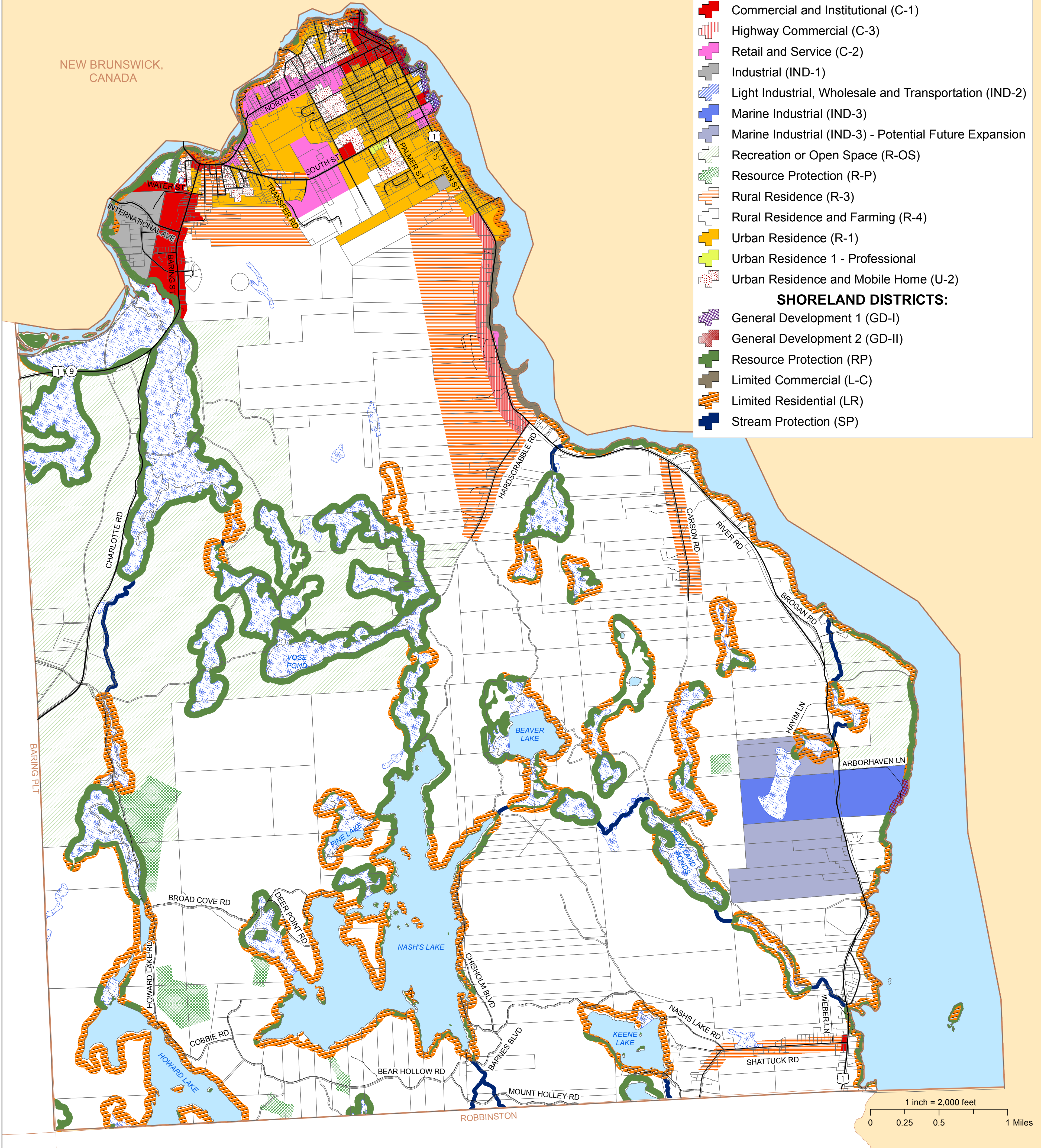
 Parcel lines (2015)

TOWN-WIDE DISTRICTS:

-  Commercial and Institutional (C-1)
-  Highway Commercial (C-3)
-  Retail and Service (C-2)
-  Industrial (IND-1)
-  Light Industrial, Wholesale and Transportation (IND-2)
-  Marine Industrial (IND-3)
-  Marine Industrial (IND-3) - Potential Future Expansion
-  Recreation or Open Space (R-OS)
-  Resource Protection (R-P)
-  Rural Residence (R-3)
-  Rural Residence and Farming (R-4)
-  Urban Residence (R-1)
-  Urban Residence 1 - Professional
-  Urban Residence and Mobile Home (U-2)

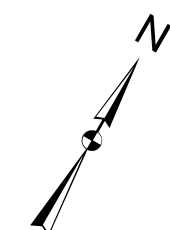
SHORELAND DISTRICTS:

-  General Development 1 (GD-I)
-  General Development 2 (GD-II)
-  Resource Protection (RP)
-  Limited Commercial (L-C)
-  Limited Residential (LR)
-  Stream Protection (SP)



1 inch = 2,000 feet
 0 0.25 0.5 1 Miles

Map revised: March, 2016
 Map produced by LatLong Logic, LLC
 Data sources: City of Calais, Aerial Survey and Photo, Inc.,
 The GIS Laboratory and Service Center at UMM, MEDOT, MEIFW and MEGIS



Additional copies can be obtained from:
 Calais City Building
 11 Church Street
 Calais, Maine 04619
 (207) 454-2521

